

Home report

7415 Wheats Valley Road, Bedford, Bedford County, Virginia,
United States, 24523



Total Area: 1878 sq. ft

Below Ground: 124 sq. ft, Floor 2: 1045 sq. ft, Floor 3: 709 sq. ft

Excluded: Storage 95 sq. ft, Basement 822 sq. ft, Porch 256 sq. ft, Fireplace 12 sq. ft, Open to below 254 sq. ft, Low ceiling 32 sq. ft, Walls: 197 sq. ft

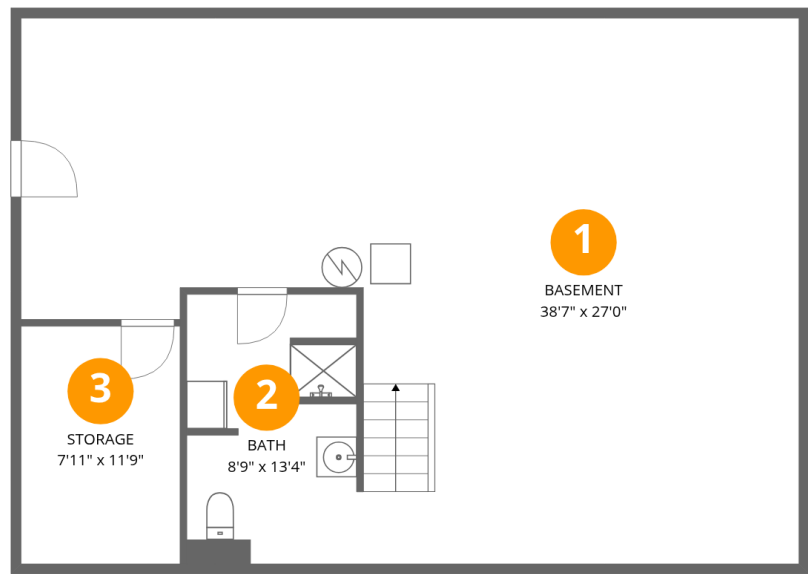
Property summary

 **3** Floors

 **2** Bedrooms

 **3** Bathrooms

7415 Wheats Valley Road, Bedford, Bedford County, Virginia,
United States, 24523

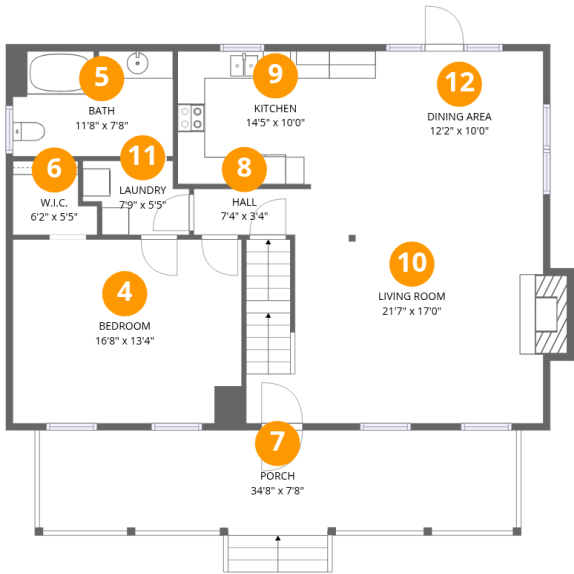


Room dimensions

Floor 1 Below ground Total:124sqft Excluded: 917sqft

#		Max Dimensions	sqft	Included
1	Basement	38'7" x 27'0"	822 sq. ft	No
2	Bath	8'9" x 13'4"	110 sq. ft	Yes
3	Storage	7'11" x 11'9"	93 sq. ft	No

7415 Wheats Valley Road, Bedford, Bedford County, Virginia,
United States, 24523



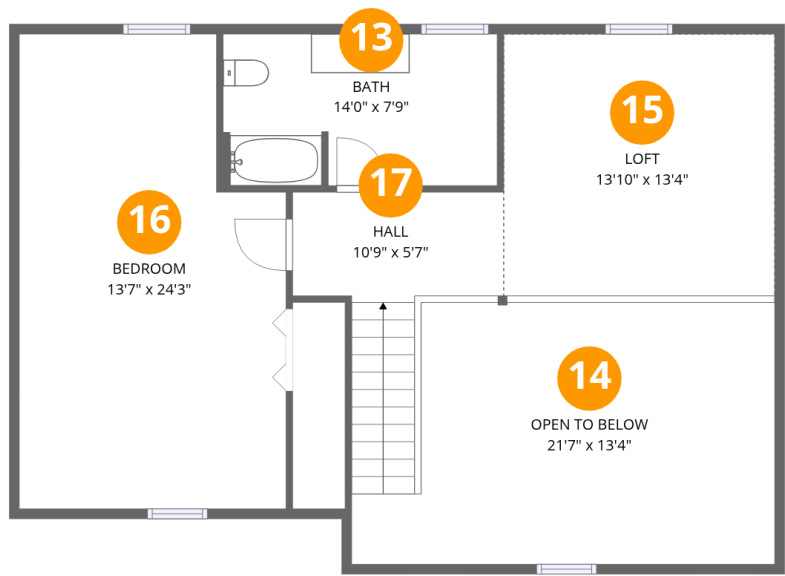
Room dimensions

Floor 2 Total:1045sqft Excluded: 268sqft

#		Max Dimensions	sqft	Included
4	Bedroom	16'8" x 13'4"	222 sq. ft	Yes
5	Bath	11'8" x 7'8"	88 sq. ft	Yes
6	W.I.C.	6'2" x 5'5"	28 sq. ft	Yes
7	Porch	34'8" x 7'8"	256 sq. ft	No
8	Hall	7'4" x 3'4"	25 sq. ft	Yes
9	Kitchen	14'5" x 10'0"	141 sq. ft	Yes
10	Living Room	21'7" x 17'0"	362 sq. ft	Yes
11	Laundry	7'9" x 5'5"	36 sq. ft	Yes
12	Dining Area	12'2" x 10'0"	122 sq. ft	Yes

Home report

7415 Wheats Valley Road, Bedford, Bedford County, Virginia,
United States, 24523



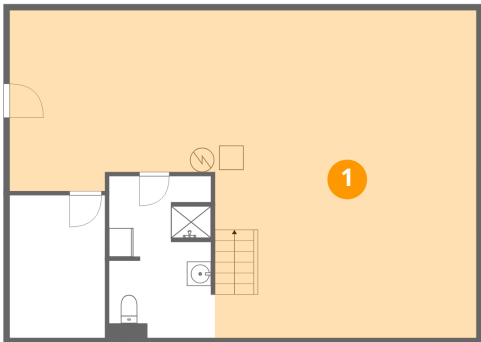
Room dimensions

Floor 3 Total:709sqft Excluded: 286sqft

#		Max Dimensions	sqft	Included
13	Bath	14'0" x 7'9"	107 sq. ft	Yes
14	Open To Below	21'7" x 13'4"	254 sq. ft	No
15	Loft	13'10" x 13'4"	189 sq. ft	Yes
16	Bedroom	13'7" x 24'3"	277 sq. ft	Yes
17	Hall	10'9" x 5'7"	94 sq. ft	Yes

7415 Wheats Valley Road, Bedford, Bedford County, Virginia,
United States, 24523

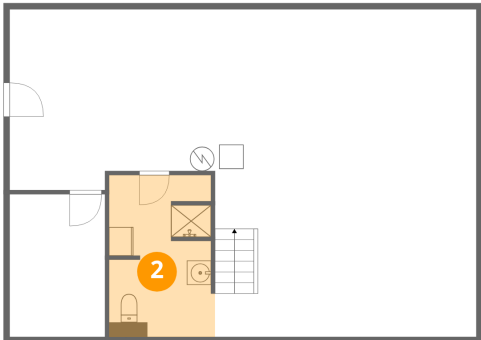
1 Floor 1 - Basement



Max Dimensions: 38'7" x 27'0"
Calculated Area: 822 sq. ft
Included: No

Heated: Yes
Finished: No
Enclosed: Yes
Contiguous: Yes
Permitted: Yes
Wet space: No
Addition: No
Conversion: No

2 Floor 1 - Bath

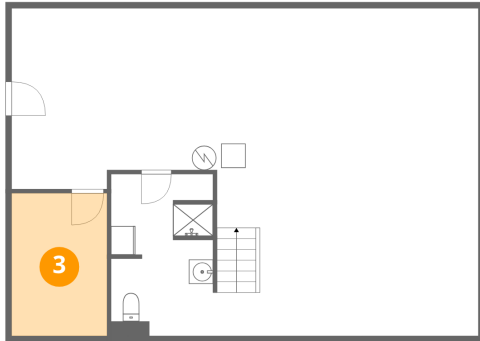


Max Dimensions: 8'9" x 13'4"
Calculated Area: 110 sq. ft
Included: No

Heated: Yes
Finished: Yes
Enclosed: Yes
Contiguous: No
Permitted: Yes
Wet space: Yes
Addition: No
Conversion: No

7415 Wheats Valley Road, Bedford, Bedford County, Virginia,
United States, 24523

3 Floor 1 - Storage



Max Dimensions: 7'11" x 11'9"
Calculated Area: 93 sq. ft
Included: No

Heated: No
Finished: No
Enclosed: No
Contiguous: Yes
Permitted: Yes
Wet space: No
Addition: No
Conversion: No

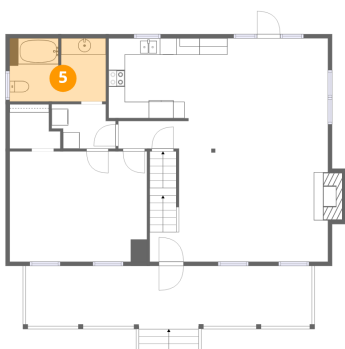
4 Floor 2 - Bedroom



Max Dimensions: 16'8" x 13'4"
Calculated Area: 222 sq. ft
Included: Yes

Heated: Yes
Finished: Yes
Enclosed: Yes
Contiguous: Yes
Permitted: Yes
Wet space: No
Addition: No
Conversion: No

5 Floor 2 - Bath

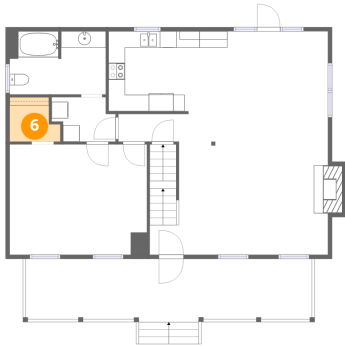


Max Dimensions: 11'8" x 7'8"
Calculated Area: 88 sq. ft
Included: Yes

Heated: Yes
Finished: Yes
Enclosed: Yes
Contiguous: Yes
Permitted: Yes
Wet space: Yes
Addition: No
Conversion: No

7415 Wheats Valley Road, Bedford, Bedford County, Virginia,
United States, 24523

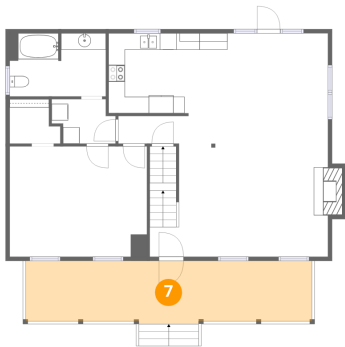
6 Floor 2 - W.I.C.



Max Dimensions: 6'2" x 5'5"
Calculated Area: 28 sq. ft
Included: Yes

Heated: Yes
Finished: Yes
Enclosed: Yes
Contiguous: Yes
Permitted: Yes
Wet space: No
Addition: No
Conversion: No

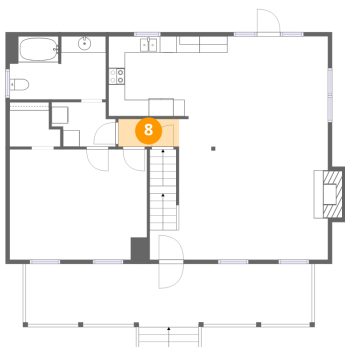
7 Floor 2 - Porch



Max Dimensions: 34'8" x 7'8"
Calculated Area: 256 sq. ft
Included: No

Heated: No
Finished: No
Enclosed: No
Contiguous: Yes
Permitted: Yes
Wet space: No
Addition: No
Conversion: No

8 Floor 2 - Hall

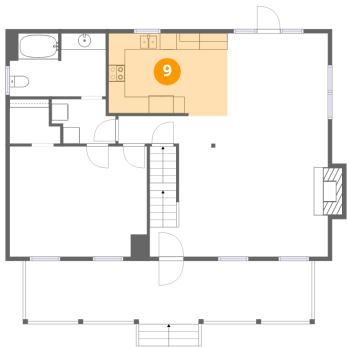


Max Dimensions: 7'4" x 3'4"
Calculated Area: 25 sq. ft
Included: Yes

Heated: Yes
Finished: Yes
Enclosed: Yes
Contiguous: Yes
Permitted: Yes
Wet space: No
Addition: No
Conversion: No

7415 Wheats Valley Road, Bedford, Bedford County, Virginia,
United States, 24523

9 Floor 2 - Kitchen



Max Dimensions: 14'5" x 10'0"
Calculated Area: 141 sq. ft
Included: Yes

Heated: Yes
Finished: Yes
Enclosed: Yes
Contiguous: Yes
Permitted: Yes
Wet space: No
Addition: No
Conversion: No

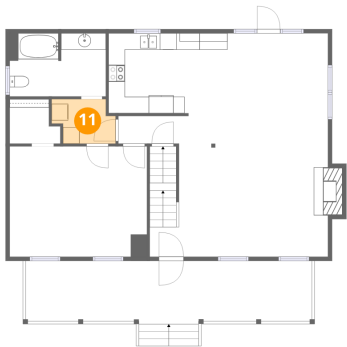
10 Floor 2 - Living Room



Max Dimensions: 21'7" x 17'0"
Calculated Area: 362 sq. ft
Included: Yes

Heated: Yes
Finished: Yes
Enclosed: Yes
Contiguous: Yes
Permitted: Yes
Wet space: No
Addition: No
Conversion: No

11 Floor 2 - Laundry



Max Dimensions: 7'9" x 5'5"
Calculated Area: 36 sq. ft
Included: Yes

Heated: Yes
Finished: Yes
Enclosed: Yes
Contiguous: Yes
Permitted: Yes
Wet space: No
Addition: No
Conversion: No

7415 Wheats Valley Road, Bedford, Bedford County, Virginia,
United States, 24523

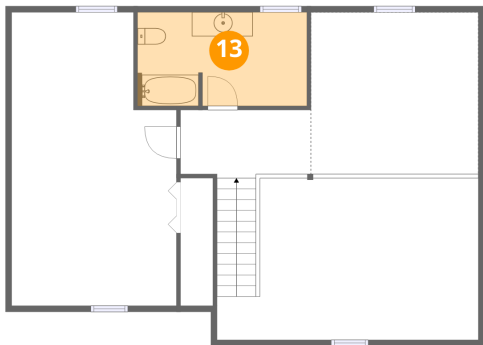
12 Floor 2 - Dining Area



Max Dimensions: 12'2" x 10'0"
Calculated Area: 122 sq. ft
Included: Yes

Heated: Yes
Finished: Yes
Enclosed: Yes
Contiguous: Yes
Permitted: Yes
Wet space: No
Addition: No
Conversion: No

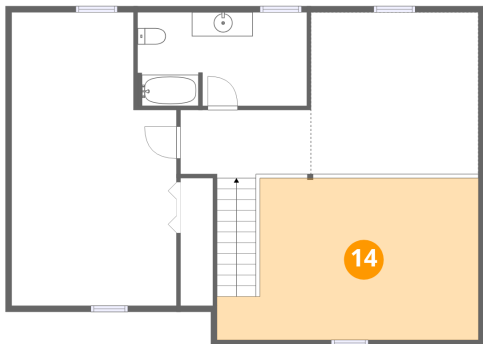
13 Floor 3 - Bath



Max Dimensions: 14'0" x 7'9"
Calculated Area: 107 sq. ft
Included: Yes

Heated: Yes
Finished: Yes
Enclosed: Yes
Contiguous: Yes
Permitted: Yes
Wet space: Yes
Addition: No
Conversion: No

14 Floor 3 - Open To Below

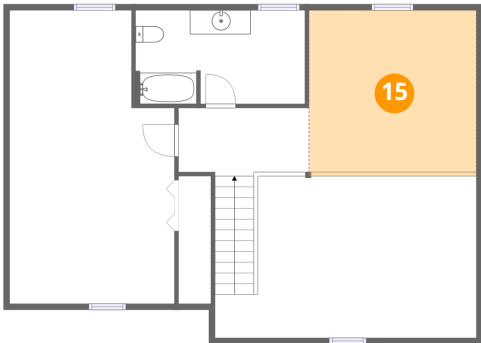


Max Dimensions: 21'7" x 13'4"
Calculated Area: 254 sq. ft
Included: No

Heated: No
Finished: No
Enclosed: No
Contiguous: Yes
Permitted: No
Wet space: No
Addition: No
Conversion: No

7415 Wheats Valley Road, Bedford, Bedford County, Virginia,
United States, 24523

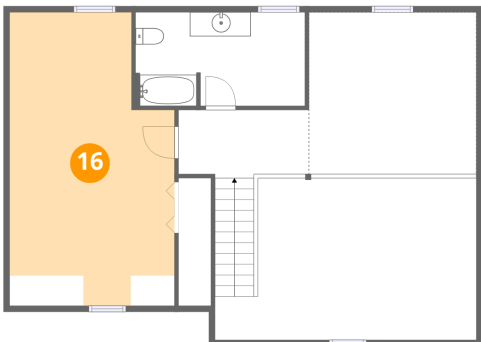
15 Floor 3 - Loft



Max Dimensions: 13'10" x 13'4"
Calculated Area: 189 sq. ft
Included: Yes

Heated: Yes
Finished: Yes
Enclosed: Yes
Contiguous: Yes
Permitted: Yes
Wet space: No
Addition: No
Conversion: No

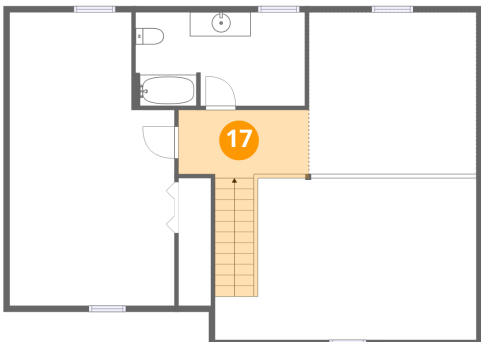
16 Floor 3 - Bedroom



Max Dimensions: 13'7" x 24'3"
Calculated Area: 277 sq. ft
Included: Yes

Heated: Yes
Finished: Yes
Enclosed: Yes
Contiguous: Yes
Permitted: Yes
Wet space: No
Addition: No
Conversion: No

17 Floor 3 - Hall



Max Dimensions: 10'9" x 5'7"
Calculated Area: 94 sq. ft
Included: Yes

Heated: Yes
Finished: Yes
Enclosed: Yes
Contiguous: Yes
Permitted: Yes
Wet space: No
Addition: No
Conversion: No