

## Home data report

215 Founders Blvd, Central, Pickens County, South Carolina,  
United States, 29630



**Total Area: 2440 sq. ft**

1st Floor: 1797 sq. ft, 2nd Floor: 643 sq. ft

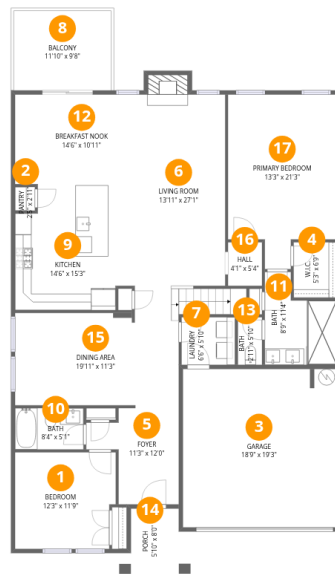
Excluded: Garage 383 sq. ft, Porch 46 sq. ft, Balcony 115 sq. ft, Fireplace 14 sq. ft, Low ceiling 116 sq. ft

## Property summary



Home data report

215 Founders Blvd, Central, Pickens County, South Carolina, United States, 29630



## Room dimensions

Floor 1

Total:1797sqft Excluded: 558sqft

#		Dimensions	sqft	Counted as living area
1	Bedroom	12'3" x 11'9"	144 sq. ft	Yes
2	Pantry	2'5" x 2'11"	7 sq. ft	Yes
3	Garage	18'9" x 19'3"	361 sq. ft	No
4	W.I.C.	5'3" x 6'9"	36 sq. ft	Yes
5	Foyer	11'3" x 12'0"	136 sq. ft	Yes
6	Living Room	13'11" x 27'1"	378 sq. ft	Yes
7	Laundry	6'6" x 5'10"	38 sq. ft	Yes
8	Balcony	11'10" x 9'8"	114 sq. ft	No
9	Kitchen	14'6" x 15'3"	222 sq. ft	Yes
10	Bath	8'4" x 5'1"	42 sq. ft	Yes
11	Bath	8'9" x 11'4"	99 sq. ft	Yes

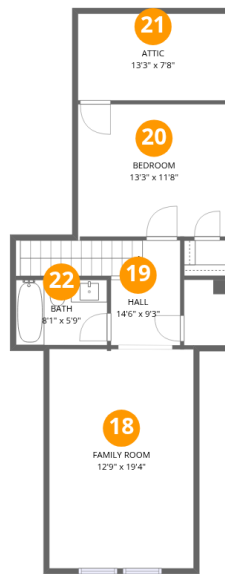
Home data report

**215 Founders Blvd, Central, Pickens County, South Carolina,  
United States, 29630**

#		Dimensions	sqft	Counted as living area
12	Breakfast Nook	14'6" x 10'11"	158 sq. ft	Yes
13	Bath	2'11" x 5'10"	17 sq. ft	Yes
14	Porch	5'10" x 8'0"	46 sq. ft	No
15	Dining Area	19'11" x 11'3"	224 sq. ft	Yes
16	Hall	4'1" x 5'4"	22 sq. ft	Yes
17	Primary Bedroom	13'3" x 21'3"	282 sq. ft	Yes

Home data report

215 Founders Blvd, Central, Pickens County, South Carolina,  
United States, 29630



## Room dimensions

Floor 2

Total:643sqft

Excluded: 116sqft

#		Dimensions	sqft	Counted as living area
18	Family Room	12'9" x 19'4"	247 sq. ft	Yes
19	Hall	14'6" x 9'3"	134 sq. ft	Yes
20	Bedroom	13'3" x 11'8"	155 sq. ft	Yes
21	Attic	13'3" x 7'8"	102 sq. ft	No
22	Bath	8'1" x 5'9"	46 sq. ft	Yes

## 1 Floor 1 - Bedroom



Dimensions: 12'3" x 11'9"  
Area: 144 sq. ft  
Counted as living area: Yes

Heated: Yes  
Finished: Yes  
Enclosed: Yes  
Contiguous: Yes  
Permitted: Yes  
Wet space: No  
Addition: No  
Conversion: No

## 2 Floor 1 - Pantry



Dimensions: 2'5" x 2'11"  
Area: 7 sq. ft  
Counted as living area: Yes

Heated: Yes  
Finished: Yes  
Enclosed: Yes  
Contiguous: Yes  
Permitted: Yes  
Wet space: No  
Addition: No  
Conversion: No

### 3 Floor 1 - Garage



Dimensions: 18'9" x 19'3"  
Area: 361 sq. ft  
Counted as living area: No

Heated: No  
Finished: No  
Enclosed: Yes  
Contiguous: Yes  
Permitted: Yes  
Wet space: No  
Addition: No  
Conversion: No

### 4 Floor 1 - W.I.C.



Dimensions: 5'3" x 6'9"  
Area: 36 sq. ft  
Counted as living area: Yes

Heated: Yes  
Finished: Yes  
Enclosed: Yes  
Contiguous: Yes  
Permitted: Yes  
Wet space: No  
Addition: No  
Conversion: No

### 5 Floor 1 - Foyer

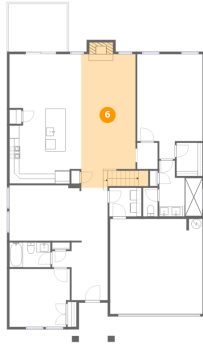


Dimensions: 11'3" x 12'0"  
Area: 136 sq. ft  
Counted as living area: Yes

Heated: Yes  
Finished: Yes  
Enclosed: Yes  
Contiguous: Yes  
Permitted: Yes  
Wet space: No  
Addition: No  
Conversion: No

**6** Floor 1 - Living Room

---



Dimensions: 13'11" x 27'1"  
Area: 378 sq. ft  
Counted as living area: Yes

Heated: Yes  
Finished: Yes  
Enclosed: Yes  
Contiguous: Yes  
Permitted: Yes  
Wet space: No  
Addition: No  
Conversion: No

**7** Floor 1 - Laundry

---



Dimensions: 6'6" x 5'10"  
Area: 38 sq. ft  
Counted as living area: Yes

Heated: Yes  
Finished: Yes  
Enclosed: Yes  
Contiguous: Yes  
Permitted: Yes  
Wet space: No  
Addition: No  
Conversion: No

**8** Floor 1 - Balcony

---



Dimensions: 11'10" x 9'8"  
Area: 114 sq. ft  
Counted as living area: No

Heated: No  
Finished: No  
Enclosed: No  
Contiguous: Yes  
Permitted: Yes  
Wet space: No  
Addition: No  
Conversion: No

**9** Floor 1 - Kitchen

---

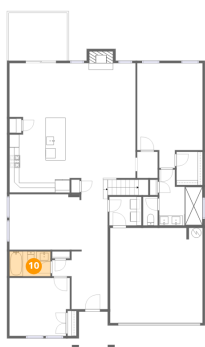


Dimensions: 14'6" x 15'3"  
Area: 222 sq. ft  
Counted as living area: Yes

Heated: Yes  
Finished: Yes  
Enclosed: Yes  
Contiguous: Yes  
Permitted: Yes  
Wet space: No  
Addition: No  
Conversion: No

**10** Floor 1 - Bath

---



Dimensions: 8'4" x 5'1"  
Area: 42 sq. ft  
Counted as living area: Yes

Heated: Yes  
Finished: Yes  
Enclosed: Yes  
Contiguous: Yes  
Permitted: Yes  
Wet space: Yes  
Addition: No  
Conversion: No

**11** Floor 1 - Bath

---

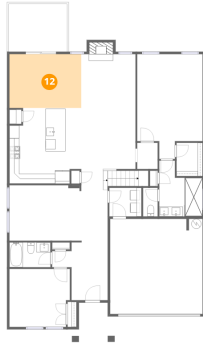


Dimensions: 8'9" x 11'4"  
Area: 99 sq. ft  
Counted as living area: Yes

Heated: Yes  
Finished: Yes  
Enclosed: Yes  
Contiguous: Yes  
Permitted: Yes  
Wet space: Yes  
Addition: No  
Conversion: No

**12** Floor 1 - Breakfast Nook

---



Dimensions: 14'6" x 10'11"  
Area: 158 sq. ft  
Counted as living area: Yes

Heated: Yes  
Finished: Yes  
Enclosed: Yes  
Contiguous: Yes  
Permitted: Yes  
Wet space: No  
Addition: No  
Conversion: No

**13** Floor 1 - Bath

---

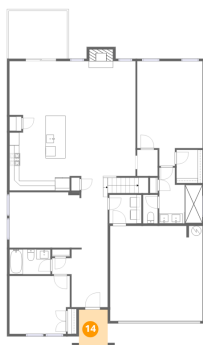


Dimensions: 2'11" x 5'10"  
Area: 17 sq. ft  
Counted as living area: Yes

Heated: Yes  
Finished: Yes  
Enclosed: Yes  
Contiguous: Yes  
Permitted: Yes  
Wet space: Yes  
Addition: No  
Conversion: No

**14** Floor 1 - Porch

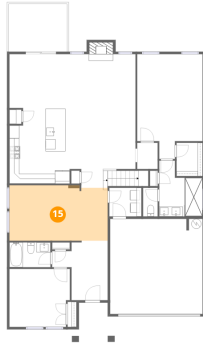
---



Dimensions: 5'10" x 8'0"  
Area: 46 sq. ft  
Counted as living area: No

Heated: No  
Finished: No  
Enclosed: No  
Contiguous: Yes  
Permitted: Yes  
Wet space: No  
Addition: No  
Conversion: No

### 15 Floor 1 - Dining Area



Dimensions: 19'11" x 11'3"  
Area: 224 sq. ft  
Counted as living area: Yes

Heated: Yes  
Finished: Yes  
Enclosed: Yes  
Contiguous: Yes  
Permitted: Yes  
Wet space: No  
Addition: No  
Conversion: No

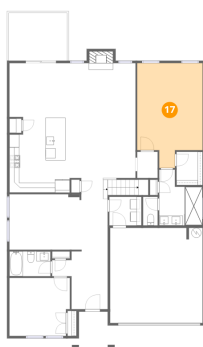
### 16 Floor 1 - Hall



Dimensions: 4'1" x 5'4"  
Area: 22 sq. ft  
Counted as living area: Yes

Heated: Yes  
Finished: Yes  
Enclosed: Yes  
Contiguous: Yes  
Permitted: Yes  
Wet space: No  
Addition: No  
Conversion: No

### 17 Floor 1 - Primary Bedroom



Dimensions: 13'3" x 21'3"  
Area: 282 sq. ft  
Counted as living area: Yes

Heated: Yes  
Finished: Yes  
Enclosed: Yes  
Contiguous: Yes  
Permitted: Yes  
Wet space: No  
Addition: No  
Conversion: No

**18** Floor 2 - Family Room

---



Dimensions: 12'9" x 19'4"  
Area: 247 sq. ft  
Counted as living area: Yes

Heated: Yes  
Finished: Yes  
Enclosed: Yes  
Contiguous: Yes  
Permitted: Yes  
Wet space: No  
Addition: No  
Conversion: No

**19** Floor 2 - Hall

---



Dimensions: 14'6" x 9'3"  
Area: 134 sq. ft  
Counted as living area: Yes

Heated: Yes  
Finished: Yes  
Enclosed: Yes  
Contiguous: Yes  
Permitted: Yes  
Wet space: No  
Addition: No  
Conversion: No

**20** Floor 2 - Bedroom

---



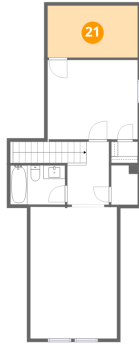
Dimensions: 13'3" x 11'8"  
Area: 155 sq. ft  
Counted as living area: Yes

Heated: Yes  
Finished: Yes  
Enclosed: Yes  
Contiguous: Yes  
Permitted: Yes  
Wet space: No  
Addition: No  
Conversion: No

215 Founders Blvd, Central, Pickens County, South Carolina,  
United States, 29630

**21** Floor 2 - Attic

---



Dimensions: 13'3" x 7'8"  
Area: 102 sq. ft  
Counted as living area: No

Heated: No  
Finished: No  
Enclosed: Yes  
Contiguous: Yes  
Permitted: Yes  
Wet space: No  
Addition: No  
Conversion: No

**22** Floor 2 - Bath

---



Dimensions: 8'1" x 5'9"  
Area: 46 sq. ft  
Counted as living area: Yes

Heated: Yes  
Finished: Yes  
Enclosed: Yes  
Contiguous: Yes  
Permitted: Yes  
Wet space: Yes  
Addition: No  
Conversion: No