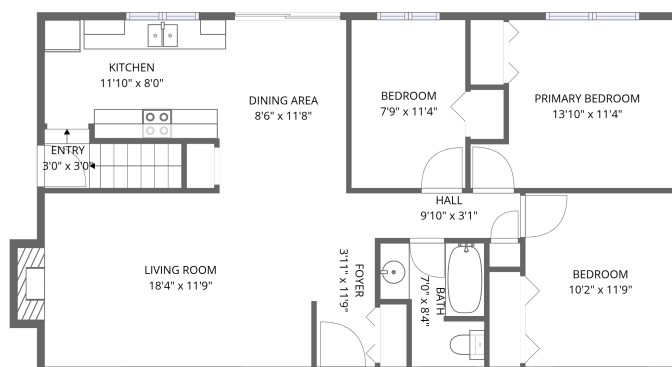
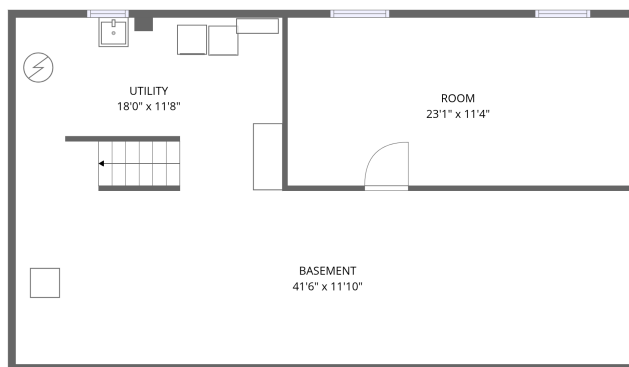


Home data report

19 Glenmanor Drive, Cityview - Crestview - Meadowlands, Crestview, Nepean, Ontario, Canada, K2G 3E8



1st floor



Basement

Total Area: 1278 sq. ft

Basement: 275 sq. ft, 1st Floor: 1003 sq. ft

Excluded: Basement 490 sq. ft, Utility 210 sq. ft, Fireplace 11 sq. ft, Walls: 130 sq. ft

Property summary



Home data report

19 Glenmanor Drive, Cityview - Crestview - Meadowlands,
Crestview, Nepean, Ontario, Canada, K2G 3E8



Room dimensions

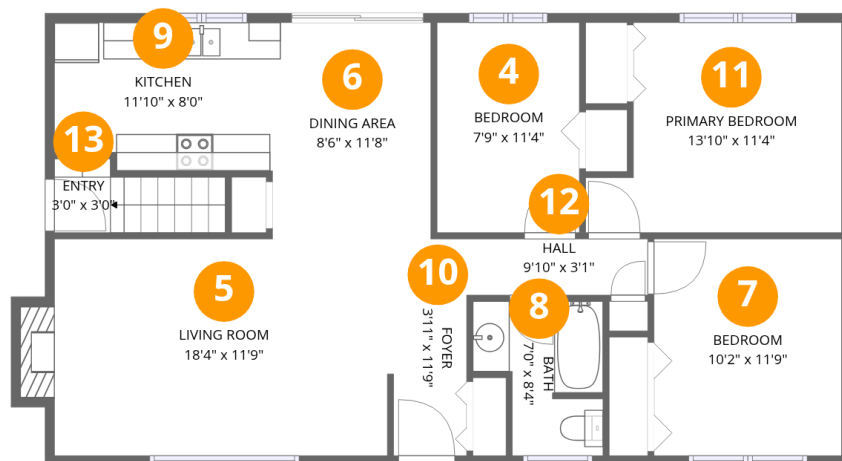
Floor 1 Below grade

Total:275sqft

Excluded: 700sqft

#		Dimensions	sqft	Counted as living area
1	Basement	41'6" x 11'10"	488 sq. ft	No
2	Room	23'1" x 11'4"	263 sq. ft	Yes
3	Utility	18'0" x 11'8"	210 sq. ft	No

**19 Glenmanor Drive, Cityview - Crestview - Meadowlands,
Crestview, Nepean, Ontario, Canada, K2G 3E8**



Room dimensions

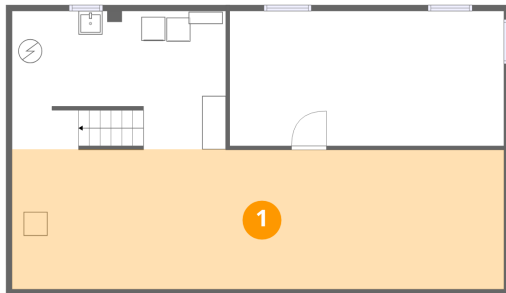
Floor 2

Total:1003sqft Excluded: 11sqft

#		Dimensions	sqft	Counted as living area
4	Bedroom	7'9" x 11'4"	88 sq. ft	Yes
5	Living Room	18'4" x 11'9"	223 sq. ft	Yes
6	Dining Area	8'6" x 11'8"	100 sq. ft	Yes
7	Bedroom	10'2" x 11'9"	119 sq. ft	Yes
8	Bath	7'0" x 8'4"	48 sq. ft	Yes
9	Kitchen	11'10" x 8'0"	91 sq. ft	Yes
10	Foyer	3'11" x 11'9"	47 sq. ft	Yes
11	Primary Bedroom	13'10" x 11'4"	136 sq. ft	Yes
12	Hall	9'10" x 3'1"	30 sq. ft	Yes
13	Entry	3'0" x 3'0"	31 sq. ft	Yes

19 Glenmanor Drive, Cityview - Crestview - Meadowlands,
Crestview, Nepean, Ontario, Canada, K2G 3E8

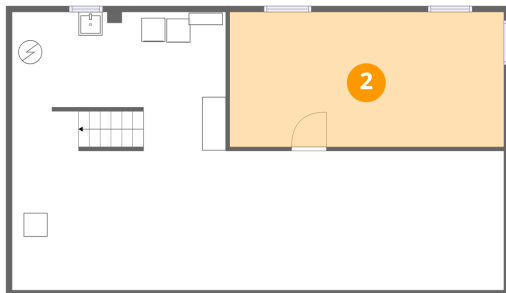
1 Floor 1 - Basement



Dimensions: 41'6" x 11'10"
Area: 488 sq. ft
Counted as living area: No

Heated: Yes
Finished: No
Enclosed: Yes
Contiguous: Yes
Permitted: Yes
Wet space: No
Addition: No
Conversion: No

2 Floor 1 - Room

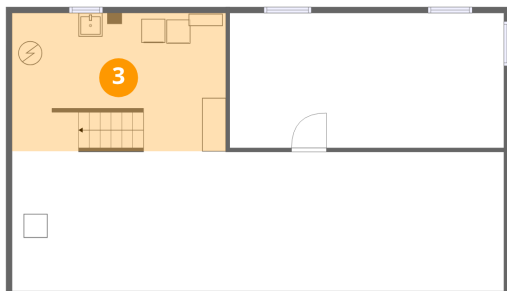


Dimensions: 23'1" x 11'4"
Area: 263 sq. ft
Counted as living area: No

Heated: Yes
Finished: Yes
Enclosed: Yes
Contiguous: No
Permitted: Yes
Wet space: No
Addition: No
Conversion: No

19 Glenmanor Drive, Cityview - Crestview - Meadowlands,
Crestview, Nepean, Ontario, Canada, K2G 3E8

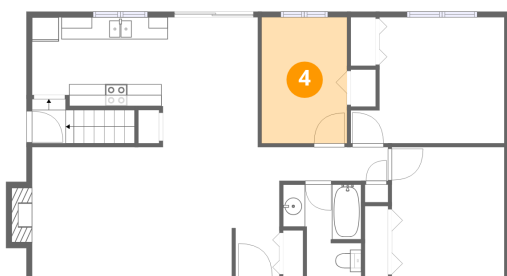
3 Floor 1 - Utility



Dimensions: 18'0" x 11'8"
Area: 210 sq. ft
Counted as living area: No

Heated: Yes
Finished: No
Enclosed: Yes
Contiguous: Yes
Permitted: Yes
Wet space: No
Addition: No
Conversion: No

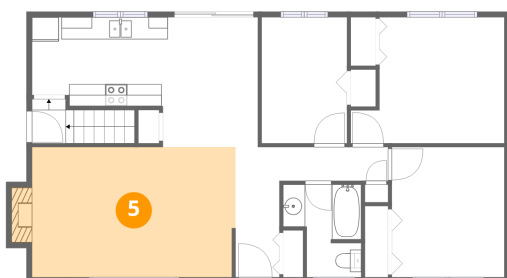
4 Floor 2 - Bedroom



Dimensions: 7'9" x 11'4"
Area: 88 sq. ft
Counted as living area: Yes

Heated: Yes
Finished: Yes
Enclosed: Yes
Contiguous: Yes
Permitted: Yes
Wet space: No
Addition: No
Conversion: No

5 Floor 2 - Living Room



Dimensions: 18'4" x 11'9"
Area: 223 sq. ft
Counted as living area: Yes

Heated: Yes
Finished: Yes
Enclosed: Yes
Contiguous: Yes
Permitted: Yes
Wet space: No
Addition: No
Conversion: No

19 Glenmanor Drive, Cityview - Crestview - Meadowlands,
Crestview, Nepean, Ontario, Canada, K2G 3E8

6 Floor 2 - Dining Area



Dimensions: 8'6" x 11'8"
Area: 100 sq. ft
Counted as living area: Yes

Heated: Yes
Finished: Yes
Enclosed: Yes
Contiguous: Yes
Permitted: Yes
Wet space: No
Addition: No
Conversion: No

7 Floor 2 - Bedroom



Dimensions: 10'2" x 11'9"
Area: 119 sq. ft
Counted as living area: Yes

Heated: Yes
Finished: Yes
Enclosed: Yes
Contiguous: Yes
Permitted: Yes
Wet space: No
Addition: No
Conversion: No

8 Floor 2 - Bath



Dimensions: 7'0" x 8'4"
Area: 48 sq. ft
Counted as living area: Yes

Heated: Yes
Finished: Yes
Enclosed: Yes
Contiguous: Yes
Permitted: Yes
Wet space: Yes
Addition: No
Conversion: No

19 Glenmanor Drive, Cityview - Crestview - Meadowlands, Crestview, Nepean, Ontario, Canada, K2G 3E8

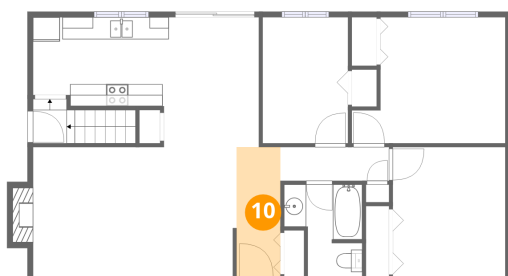
9 Floor 2 - Kitchen



Dimensions: 11'10" x 8'0"
Area: 91 sq. ft
Counted as living area: Yes

Heated: Yes
Finished: Yes
Enclosed: Yes
Contiguous: Yes
Permitted: Yes
Wet space: No
Addition: No
Conversion: No

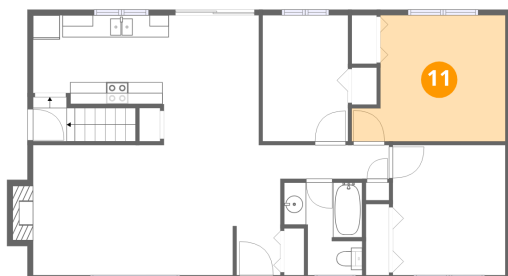
10 Floor 2 - Foyer



Dimensions: 3'11" x 11'9"
Area: 47 sq. ft
Counted as living area: Yes

Heated: Yes
Finished: Yes
Enclosed: Yes
Contiguous: Yes
Permitted: Yes
Wet space: No
Addition: No
Conversion: No

11 Floor 2 - Primary Bedroom

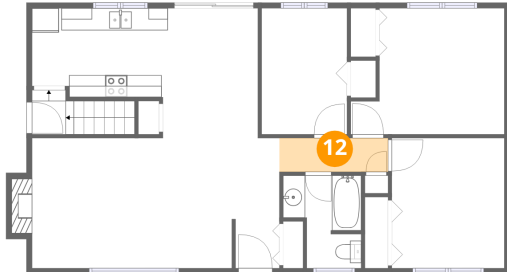


Dimensions: 13'10" x 11'4"
Area: 136 sq. ft
Counted as living area: Yes

Heated: Yes
Finished: Yes
Enclosed: Yes
Contiguous: Yes
Permitted: Yes
Wet space: No
Addition: No
Conversion: No

19 Glenmanor Drive, Cityview - Crestview - Meadowlands,
Crestview, Nepean, Ontario, Canada, K2G 3E8

12 Floor 2 - Hall



Dimensions: 9'10" x 3'1"
Area: 30 sq. ft
Counted as living area: Yes

Heated: Yes
Finished: Yes
Enclosed: Yes
Contiguous: Yes
Permitted: Yes
Wet space: No
Addition: No
Conversion: No

13 Floor 2 - Entry



Dimensions: 3'0" x 3'0"
Area: 31 sq. ft
Counted as living area: Yes

Heated: Yes
Finished: Yes
Enclosed: Yes
Contiguous: Yes
Permitted: Yes
Wet space: No
Addition: No
Conversion: No