

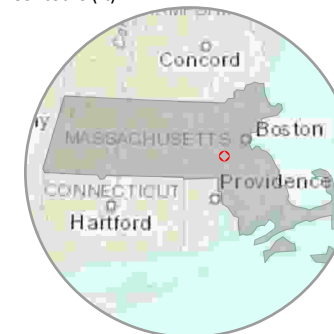
345 North Street

Medfield, MA

Site Analysis Plan

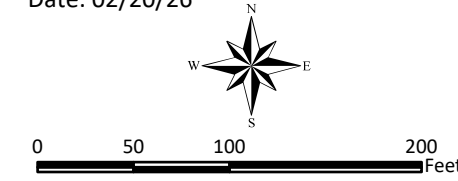
Legend

- Subject Property - 9.5 ±Ac
- Adjacent Properties
- Protected Land
- Building Footprints
- Open Water
- Wetlands - 1.18±Ac
- 50' Wetlands Setback
- 100' Wetlands Setback
- 200' Rivers Act Setback
- Perennial Streams
- Intermittent Streams
- Contours (ft)



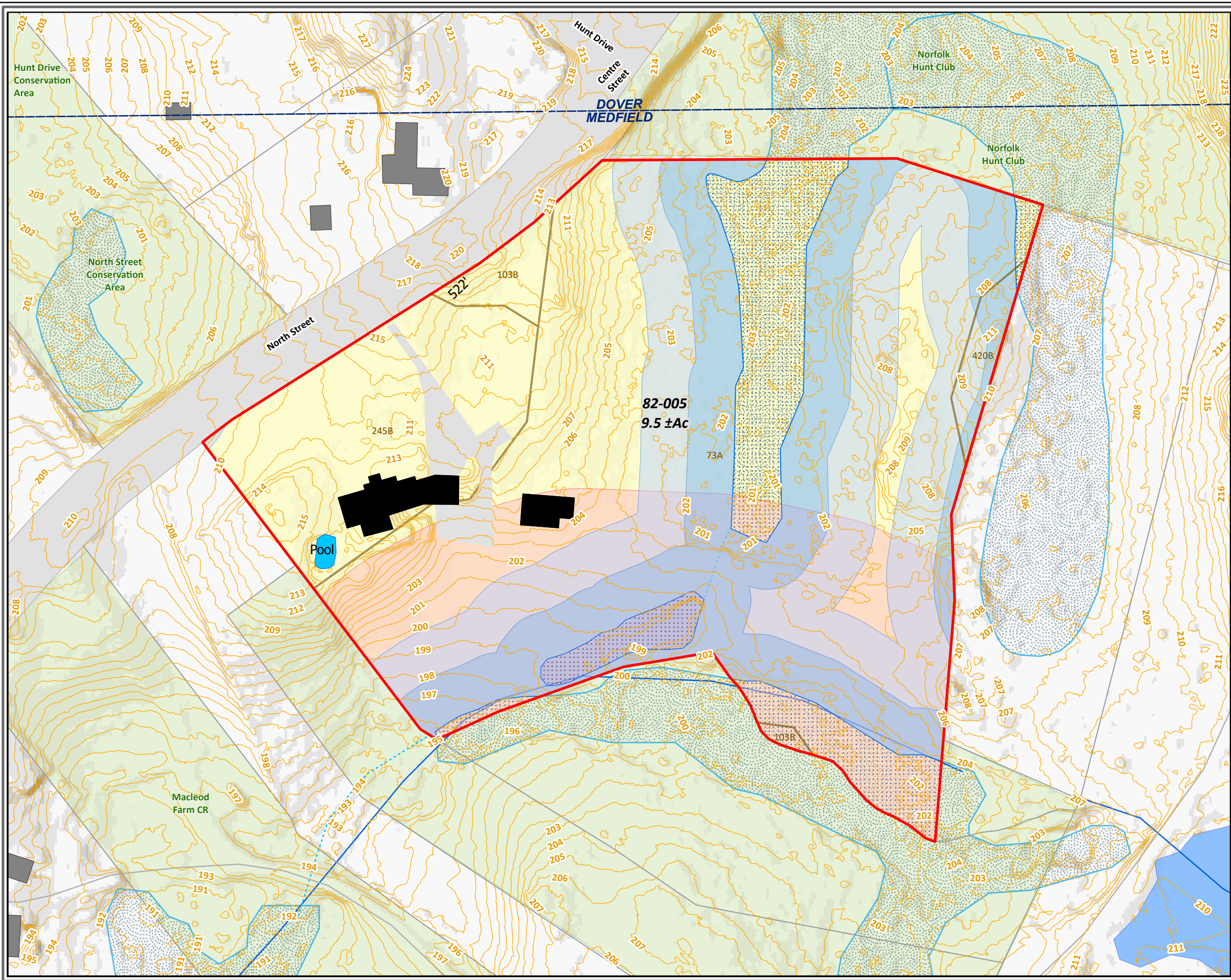
Notes
Credits: Background from
ESRI 'Terrain Base' map
service

Project Number: MA5557
Date: 02/20/26



This plan is conceptual only and is not
represented as an engineered plan.

LandVest



Path: \\vazgis-bos\REGG-GIS\aaGIS\org\Projects\Assigned\MA5557 345 North Street, Medfield, MA\MA5557 site analysis.aprx