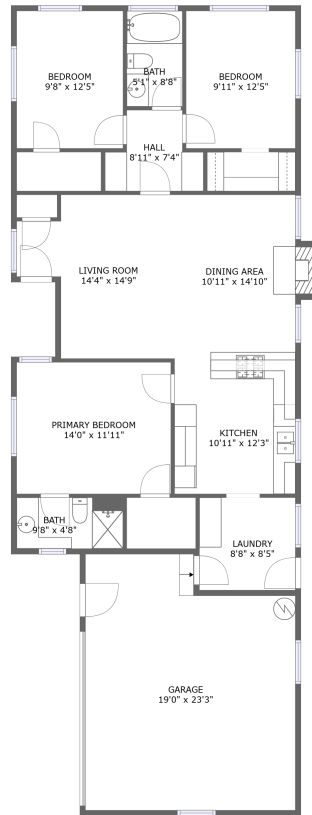


Home report

**5316 Wild Oak Road, Balch Springs, Dallas County, Texas,  
United States, 75180**



FLOOR 1

**Total Area: 1236 sq. ft**

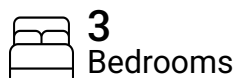
Floor 1: 1236 sq. ft

Excluded: Garage 407 sq. ft, Fireplace 9 sq. ft, Walls: 112 sq. ft

## Property summary



**1**  
Floors



**3**  
Bedrooms



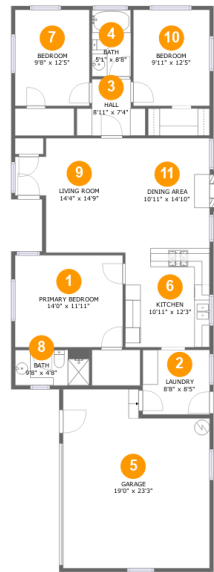
**2**  
Bathrooms



**1**  
Garages

Home report

5316 Wild Oak Road, Balch Springs, Dallas County, Texas,  
United States, 75180



## Room dimensions

Floor 1

Total:1236sqft

Excluded: 416sqft

#		Max Dimensions	sqft	Included
1	Primary Bedroom	14'0" x 11'11"	167 sq. ft	Yes
2	Laundry	8'8" x 8'5"	73 sq. ft	Yes
3	Hall	8'11" x 7'4"	51 sq. ft	Yes
4	Bath	5'1" x 8'8"	44 sq. ft	Yes
5	Garage	19'0" x 23'3"	407 sq. ft	No
6	Kitchen	10'11" x 12'3"	134 sq. ft	Yes
7	Bedroom	9'8" x 12'5"	120 sq. ft	Yes
8	Bath	9'8" x 4'8"	45 sq. ft	Yes
9	Living Room	14'4" x 14'9"	173 sq. ft	Yes
10	Bedroom	9'11" x 12'5"	123 sq. ft	Yes
11	Dining Area	10'11" x 14'10"	170 sq. ft	Yes

5316 Wild Oak Road, Balch Springs, Dallas County, Texas,  
United States, 75180

## 1 Floor 1 - Primary Bedroom



Max Dimensions: 14'0" x  
11'11"  
Calculated Area: 167 sq. ft  
Included: Yes

Heated: Yes  
Finished: Yes  
Enclosed: Yes  
Contiguous:  
Yes  
Permitted: Yes  
Wet space: No  
Addition: No  
Conversion: No

## 2 Floor 1 - Laundry



Max Dimensions: 8'8" x 8'5"  
Calculated Area: 73 sq. ft  
Included: Yes

Heated: Yes  
Finished: Yes  
Enclosed: Yes  
Contiguous: Yes  
Permitted: Yes  
Wet space: No  
Addition: No  
Conversion: No

5316 Wild Oak Road, Balch Springs, Dallas County, Texas,  
United States, 75180

### 3 Floor 1 - Hall



Max Dimensions: 8'11" x 7'4"  
Calculated Area: 51 sq. ft  
Included: Yes

Heated: Yes  
Finished: Yes  
Enclosed: Yes  
Contiguous: Yes  
Permitted: Yes  
Wet space: No  
Addition: No  
Conversion: No

### 4 Floor 1 - Bath



Max Dimensions: 5'1" x 8'8"  
Calculated Area: 44 sq. ft  
Included: Yes

Heated: Yes  
Finished: Yes  
Enclosed: Yes  
Contiguous: Yes  
Permitted: Yes  
Wet space: Yes  
Addition: No  
Conversion: No

### 5 Floor 1 - Garage



Max Dimensions: 19'0" x 23'3"  
Calculated Area: 407 sq. ft  
Included: No

Heated: No  
Finished: No  
Enclosed: Yes  
Contiguous: Yes  
Permitted: Yes  
Wet space: No  
Addition: No  
Conversion: No

5316 Wild Oak Road, Balch Springs, Dallas County, Texas,  
United States, 75180

### 6 Floor 1 - Kitchen



Max Dimensions: 10'11" x 12'3"  
Calculated Area: 134 sq. ft  
Included: Yes

Heated: Yes  
Finished: Yes  
Enclosed: Yes  
Contiguous: Yes  
Permitted: Yes  
Wet space: No  
Addition: No  
Conversion: No

### 7 Floor 1 - Bedroom



Max Dimensions: 9'8" x 12'5"  
Calculated Area: 120 sq. ft  
Included: Yes

Heated: Yes  
Finished: Yes  
Enclosed: Yes  
Contiguous: Yes  
Permitted: Yes  
Wet space: No  
Addition: No  
Conversion: No

### 8 Floor 1 - Bath



Max Dimensions: 9'8" x 4'8"  
Calculated Area: 45 sq. ft  
Included: Yes

Heated: Yes  
Finished: Yes  
Enclosed: Yes  
Contiguous: Yes  
Permitted: Yes  
Wet space: Yes  
Addition: No  
Conversion: No

5316 Wild Oak Road, Balch Springs, Dallas County, Texas,  
United States, 75180

**9** Floor 1 - Living Room

---



Max Dimensions: 14'4" x 14'9"  
Calculated Area: 173 sq. ft  
Included: Yes

Heated: Yes  
Finished: Yes  
Enclosed: Yes  
Contiguous: Yes  
Permitted: Yes  
Wet space: No  
Addition: No  
Conversion: No

**10** Floor 1 - Bedroom

---



Max Dimensions: 9'11" x 12'5"  
Calculated Area: 123 sq. ft  
Included: Yes

Heated: Yes  
Finished: Yes  
Enclosed: Yes  
Contiguous: Yes  
Permitted: Yes  
Wet space: No  
Addition: No  
Conversion: No

**11** Floor 1 - Dining Area

---



Max Dimensions: 10'11" x 14'10"  
Calculated Area: 170 sq. ft  
Included: Yes

Heated: Yes  
Finished: Yes  
Enclosed: Yes  
Contiguous: Yes  
Permitted: Yes  
Wet space: No  
Addition: No  
Conversion: No