

# Home data report

## 4680 Mountain Sky Ct, Johnstown, CO, US




**Total Area: 2928 sq. ft**

Basement: 1464 sq. ft, 1st Floor: 1464 sq. ft

Excluded: Garage 613 sq. ft, Walls: 234 sq. ft

### Property summary

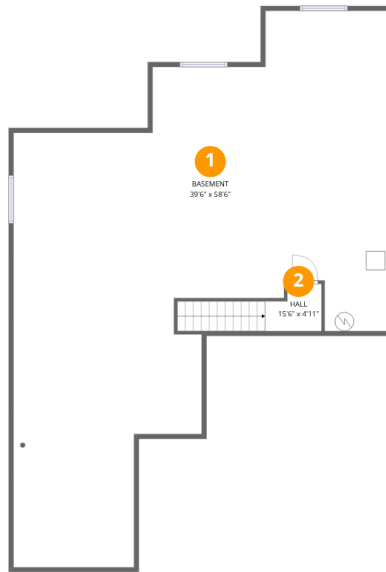
 **2** Floors

 **3** Bedrooms

 **2** Bathrooms

 **1** Garages

# 4680 Mountain Sky Ct,Johnstown,CO,US



## Room dimensions

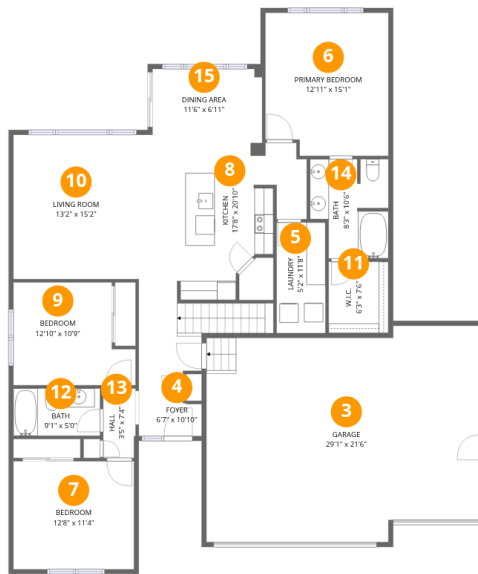
Floor 1 Below grade

Total:1464sqft

Excluded: 0sqft

#		Dimensions	sqft	Counted as living area
1	Basement	39'6" x 58'6"	1400 sq. ft	Yes
2	Hall	15'6" x 4'11"	54 sq. ft	Yes

# 4680 Mountain Sky Ct, Johnstown, CO, US



## Room dimensions

Floor 2

Total: 1464sqft

Excluded: 613sqft

#		Dimensions	sqft	Counted as living area
3	Garage	29'1" x 21'6"	613 sq. ft	No
4	Foyer	6'7" x 10'10"	65 sq. ft	Yes
5	Laundry	5'2" x 11'8"	60 sq. ft	Yes
6	Primary Bedroom	12'11" x 15'1"	189 sq. ft	Yes
7	Bedroom	12'8" x 11'4"	144 sq. ft	Yes
8	Kitchen	17'8" x 20'10"	298 sq. ft	Yes
9	Bedroom	12'10" x 10'9"	122 sq. ft	Yes
10	Living Room	13'2" x 15'2"	200 sq. ft	Yes
11	W.I.C.	6'3" x 7'6"	47 sq. ft	Yes
12	Bath	9'1" x 5'0"	45 sq. ft	Yes
13	Hall	3'5" x 7'4"	25 sq. ft	Yes

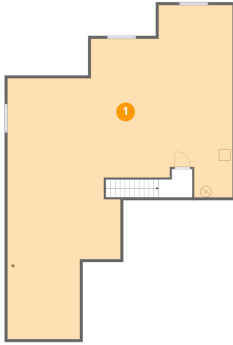
Home data report

**4680 Mountain Sky Ct,Johnstown,CO,US**

#		Dimensions	sqft	Counted as living area
14	Bath	8'3" x 10'6"	76 sq. ft	Yes
15	Dining Area	11'6" x 6'11"	80 sq. ft	Yes

## 1 Floor 1 - Basement

---

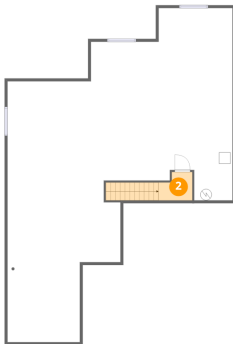


Dimensions: 39'6" x 58'6"  
Area: 1400 sq. ft  
Counted as living area: Yes

Heated: Yes  
Finished: Yes  
Enclosed: Yes  
Contiguous: Yes  
Permitted: Yes  
Wet space: No  
Addition: No  
Conversion: No

## 2 Floor 1 - Hall

---



Dimensions: 15'6" x 4'11"  
Area: 54 sq. ft  
Counted as living area: Yes

Heated: Yes  
Finished: Yes  
Enclosed: Yes  
Contiguous: Yes  
Permitted: Yes  
Wet space: No  
Addition: No  
Conversion: No

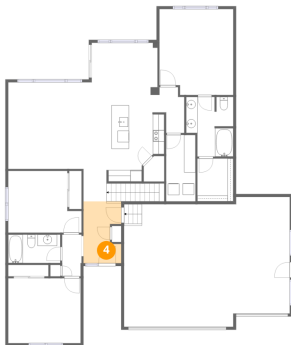
### 3 Floor 2 - Garage



Dimensions: 29'1" x 21'6"  
Area: 613 sq. ft  
Counted as living area: No

Heated: No  
Finished: No  
Enclosed: Yes  
Contiguous: Yes  
Permitted: Yes  
Wet space: No  
Addition: No  
Conversion: No

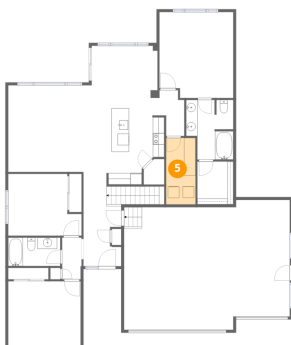
### 4 Floor 2 - Foyer



Dimensions: 6'7" x 10'10"  
Area: 65 sq. ft  
Counted as living area: Yes

Heated: Yes  
Finished: Yes  
Enclosed: Yes  
Contiguous: Yes  
Permitted: Yes  
Wet space: No  
Addition: No  
Conversion: No

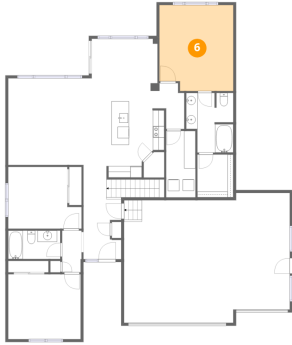
### 5 Floor 2 - Laundry



Dimensions: 5'2" x 11'8"  
Area: 60 sq. ft  
Counted as living area: Yes

Heated: Yes  
Finished: Yes  
Enclosed: Yes  
Contiguous: Yes  
Permitted: Yes  
Wet space: No  
Addition: No  
Conversion: No

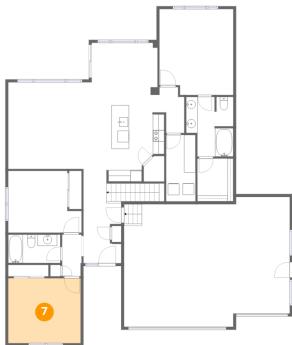
## 6 Floor 2 - Primary Bedroom



Dimensions: 12'11" x 15'1"  
Area: 189 sq. ft  
Counted as living area: Yes

Heated: Yes  
Finished: Yes  
Enclosed: Yes  
Contiguous: Yes  
Permitted: Yes  
Wet space: No  
Addition: No  
Conversion: No

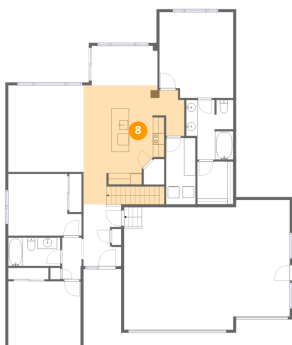
## 7 Floor 2 - Bedroom



Dimensions: 12'8" x 11'4"  
Area: 144 sq. ft  
Counted as living area: Yes

Heated: Yes  
Finished: Yes  
Enclosed: Yes  
Contiguous: Yes  
Permitted: Yes  
Wet space: No  
Addition: No  
Conversion: No

## 8 Floor 2 - Kitchen



Dimensions: 17'8" x 20'10"  
Area: 298 sq. ft  
Counted as living area: Yes

Heated: Yes  
Finished: Yes  
Enclosed: Yes  
Contiguous: Yes  
Permitted: Yes  
Wet space: No  
Addition: No  
Conversion: No

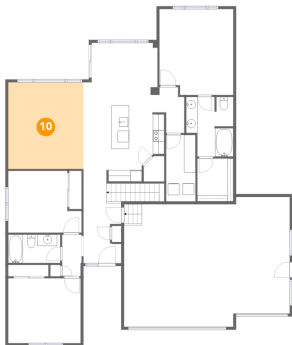
## 9 Floor 2 - Bedroom



Dimensions: 12'10" x 10'9"  
Area: 122 sq. ft  
Counted as living area: Yes

Heated: Yes  
Finished: Yes  
Enclosed: Yes  
Contiguous: Yes  
Permitted: Yes  
Wet space: No  
Addition: No  
Conversion: No

## 10 Floor 2 - Living Room



Dimensions: 13'2" x 15'2"  
Area: 200 sq. ft  
Counted as living area: Yes

Heated: Yes  
Finished: Yes  
Enclosed: Yes  
Contiguous: Yes  
Permitted: Yes  
Wet space: No  
Addition: No  
Conversion: No

## 11 Floor 2 - W.I.C.



Dimensions: 6'3" x 7'6"  
Area: 47 sq. ft  
Counted as living area: Yes

Heated: Yes  
Finished: Yes  
Enclosed: Yes  
Contiguous: Yes  
Permitted: Yes  
Wet space: No  
Addition: No  
Conversion: No

**12** Floor 2 - Bath

---



Dimensions: 9'1" x 5'0"  
Area: 45 sq. ft  
Counted as living area: Yes

Heated: Yes  
Finished: Yes  
Enclosed: Yes  
Contiguous: Yes  
Permitted: Yes  
Wet space: Yes  
Addition: No  
Conversion: No

**13** Floor 2 - Hall

---

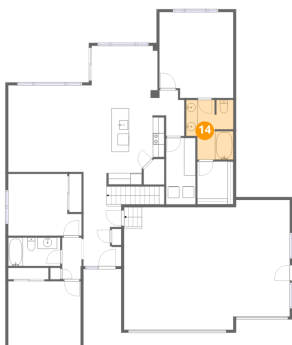


Dimensions: 3'5" x 7'4"  
Area: 25 sq. ft  
Counted as living area: Yes

Heated: Yes  
Finished: Yes  
Enclosed: Yes  
Contiguous: Yes  
Permitted: Yes  
Wet space: No  
Addition: No  
Conversion: No

**14** Floor 2 - Bath

---



Dimensions: 8'3" x 10'6"  
Area: 76 sq. ft  
Counted as living area: Yes

Heated: Yes  
Finished: Yes  
Enclosed: Yes  
Contiguous: Yes  
Permitted: Yes  
Wet space: Yes  
Addition: No  
Conversion: No

**15** Floor 2 - Dining Area

---



**Dimensions:** 11'6" x 6'11"  
**Area:** 80 sq. ft  
**Counted as living area:** Yes

**Heated:** Yes  
**Finished:** Yes  
**Enclosed:** Yes  
**Contiguous:** Yes  
**Permitted:** Yes  
**Wet space:** No  
**Addition:** No  
**Conversion:** No