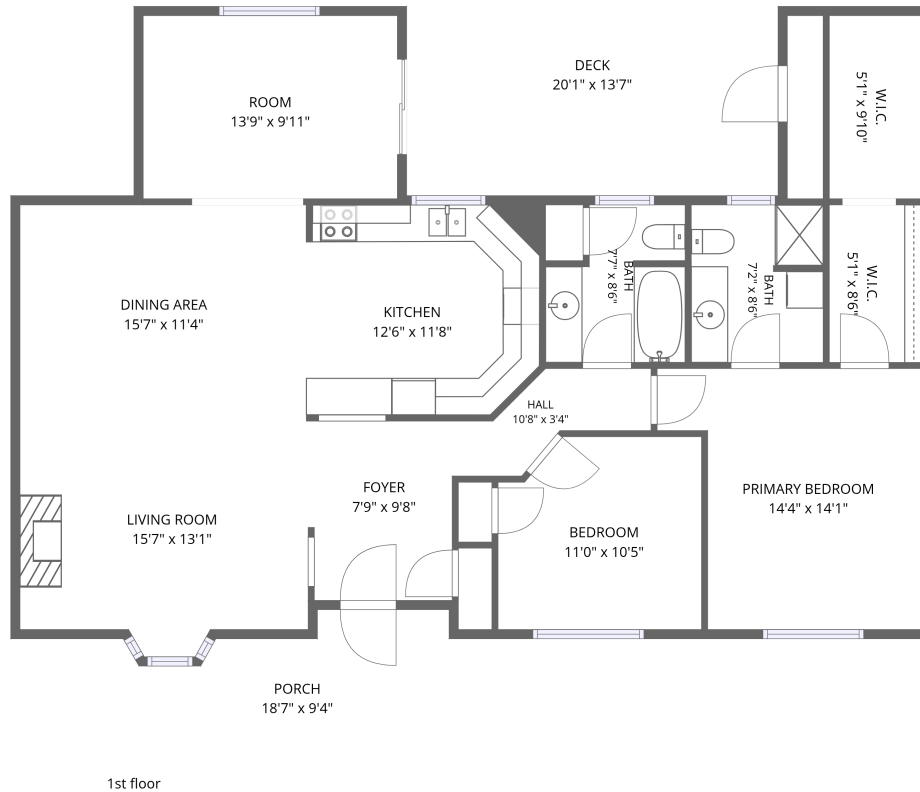


# Home data report

## 12 Belle Isle Arm, Innisfil Beach, ON, CA




**Total Area: 1325 sq. ft**

1st Floor: 1325 sq. ft

Excluded: Deck 273 sq. ft, Porch 121 sq. ft, Walls: 99 sq. ft

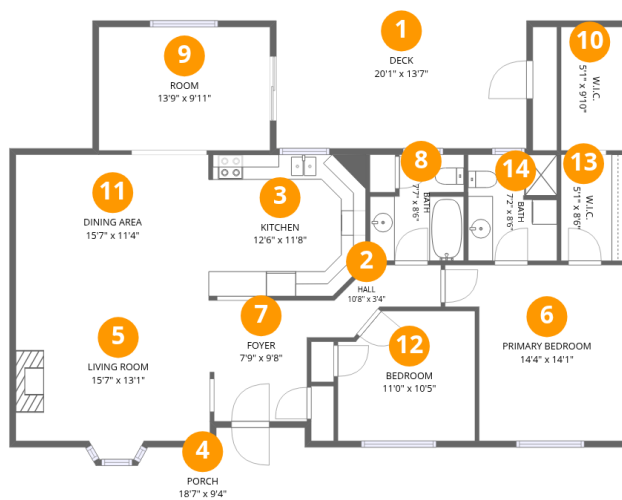
### Property summary

 **1** Floors

 **2** Bedrooms

 **2** Bathrooms

# 12 Belle Isle Arm, Innisfil Beach, ON, CA



## Room dimensions

Floor 1

Total: 1325sqft Excluded: 394sqft

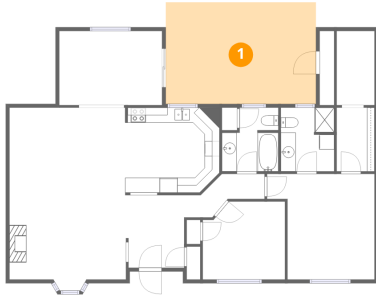
#		Dimensions	sqft	Counted as living area
1	Deck	20'1" x 13'7"	273 sq. ft	No
2	Hall	10'8" x 3'4"	38 sq. ft	Yes
3	Kitchen	12'6" x 11'8"	139 sq. ft	Yes
4	Porch	18'7" x 9'4"	121 sq. ft	No
5	Living Room	15'7" x 13'1"	186 sq. ft	Yes
6	Primary Bedroom	14'4" x 14'1"	173 sq. ft	Yes
7	Foyer	7'9" x 9'8"	75 sq. ft	Yes
8	Bath	7'7" x 8'6"	55 sq. ft	Yes
9	Room	13'9" x 9'11"	136 sq. ft	Yes
10	W.I.C.	5'1" x 9'10"	50 sq. ft	Yes
11	Dining Area	15'7" x 11'4"	177 sq. ft	Yes

Home data report

**12 Belle Isle Arm,Innisfil Beach,ON,CA**

#		Dimensions	sqft	Counted as living area
12	Bedroom	11'0" x 10'5"	109 sq. ft	Yes
13	W.I.C.	5'1" x 8'6"	43 sq. ft	Yes
14	Bath	7'2" x 8'6"	60 sq. ft	Yes

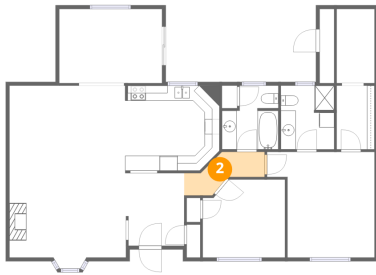
## 1 Floor 1 - Deck



Dimensions: 20'1" x 13'7"  
Area: 273 sq. ft  
Counted as living area: No

Heated: No  
Finished: No  
Enclosed: No  
Contiguous: Yes  
Permitted: Yes  
Wet space: No  
Addition: No  
Conversion: No

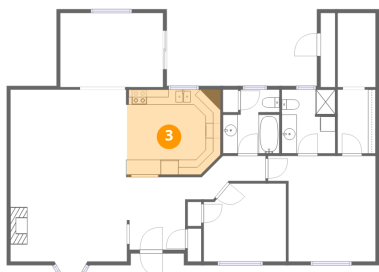
## 2 Floor 1 - Hall



Dimensions: 10'8" x 3'4"  
Area: 38 sq. ft  
Counted as living area: Yes

Heated: Yes  
Finished: Yes  
Enclosed: Yes  
Contiguous: Yes  
Permitted: Yes  
Wet space: No  
Addition: No  
Conversion: No

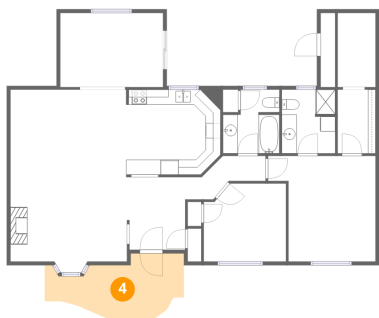
### 3 Floor 1 - Kitchen



Dimensions: 12'6" x 11'8"  
Area: 139 sq. ft  
Counted as living area: Yes

Heated: Yes  
Finished: Yes  
Enclosed: Yes  
Contiguous: Yes  
Permitted: Yes  
Wet space: No  
Addition: No  
Conversion: No

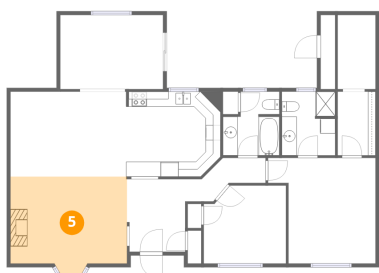
### 4 Floor 1 - Porch



Dimensions: 18'7" x 9'4"  
Area: 121 sq. ft  
Counted as living area: No

Heated: No  
Finished: No  
Enclosed: No  
Contiguous: Yes  
Permitted: Yes  
Wet space: No  
Addition: No  
Conversion: No

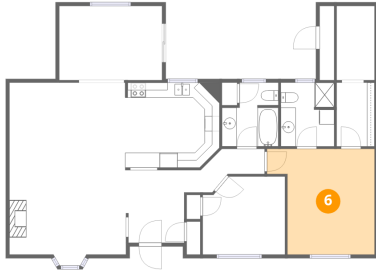
### 5 Floor 1 - Living Room



Dimensions: 15'7" x 13'1"  
Area: 186 sq. ft  
Counted as living area: Yes

Heated: Yes  
Finished: Yes  
Enclosed: Yes  
Contiguous: Yes  
Permitted: Yes  
Wet space: No  
Addition: No  
Conversion: No

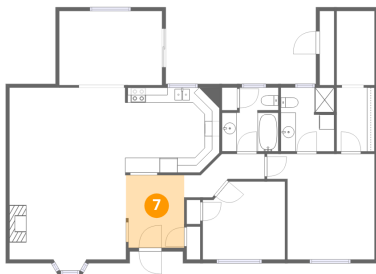
## 6 Floor 1 - Primary Bedroom



Dimensions: 14'4" x 14'1"  
Area: 173 sq. ft  
Counted as living area: Yes

Heated: Yes  
Finished: Yes  
Enclosed: Yes  
Contiguous: Yes  
Permitted: Yes  
Wet space: No  
Addition: No  
Conversion: No

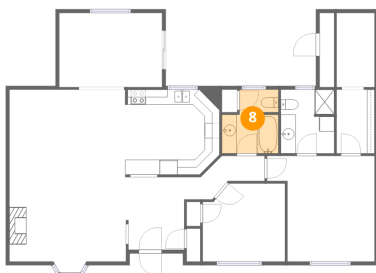
## 7 Floor 1 - Foyer



Dimensions: 7'9" x 9'8"  
Area: 75 sq. ft  
Counted as living area: Yes

Heated: Yes  
Finished: Yes  
Enclosed: Yes  
Contiguous: Yes  
Permitted: Yes  
Wet space: No  
Addition: No  
Conversion: No

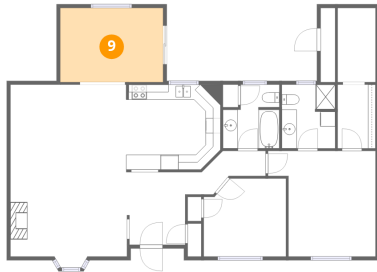
## 8 Floor 1 - Bath



Dimensions: 7'7" x 8'6"  
Area: 55 sq. ft  
Counted as living area: Yes

Heated: Yes  
Finished: Yes  
Enclosed: Yes  
Contiguous: Yes  
Permitted: Yes  
Wet space: Yes  
Addition: No  
Conversion: No

**9** Floor 1 - Room



Dimensions: 13'9" x 9'11"  
Area: 136 sq. ft  
Counted as living area: Yes

Heated: Yes  
Finished: Yes  
Enclosed: Yes  
Contiguous: Yes  
Permitted: Yes  
Wet space: No  
Addition: No  
Conversion: No

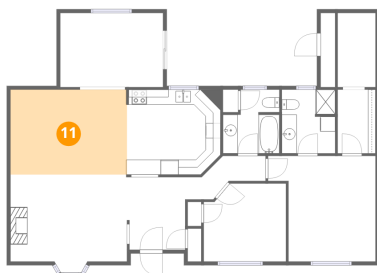
**10** Floor 1 - W.I.C.



Dimensions: 5'1" x 9'10"  
Area: 50 sq. ft  
Counted as living area: Yes

Heated: Yes  
Finished: Yes  
Enclosed: Yes  
Contiguous: Yes  
Permitted: Yes  
Wet space: No  
Addition: No  
Conversion: No

**11** Floor 1 - Dining Area



Dimensions: 15'7" x 11'4"  
Area: 177 sq. ft  
Counted as living area: Yes

Heated: Yes  
Finished: Yes  
Enclosed: Yes  
Contiguous: Yes  
Permitted: Yes  
Wet space: No  
Addition: No  
Conversion: No

## 12 Floor 1 - Bedroom



Dimensions: 11'0" x 10'5"  
Area: 109 sq. ft  
Counted as living area: Yes

Heated: Yes  
Finished: Yes  
Enclosed: Yes  
Contiguous: Yes  
Permitted: Yes  
Wet space: No  
Addition: No  
Conversion: No

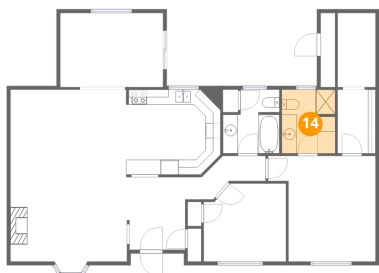
## 13 Floor 1 - W.I.C.



Dimensions: 5'1" x 8'6"  
Area: 43 sq. ft  
Counted as living area: Yes

Heated: Yes  
Finished: Yes  
Enclosed: Yes  
Contiguous: Yes  
Permitted: Yes  
Wet space: No  
Addition: No  
Conversion: No

## 14 Floor 1 - Bath



Dimensions: 7'2" x 8'6"  
Area: 60 sq. ft  
Counted as living area: Yes

Heated: Yes  
Finished: Yes  
Enclosed: Yes  
Contiguous: Yes  
Permitted: Yes  
Wet space: Yes  
Addition: No  
Conversion: No