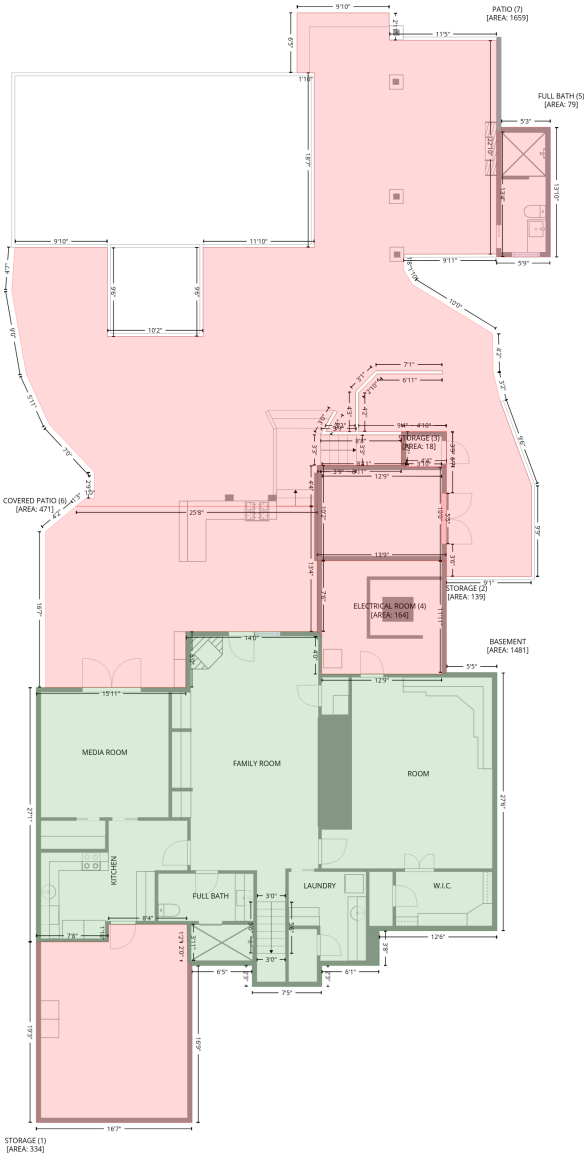


# 198 Broadbill Dr, Mooresville, NC, US

Gross Living Area: 4432 sq. ft

## Level 1



# 198 Broadbill Dr, Mooresville, NC, US

Gross Living Area: 4432 sq. ft

## Level 1

Space	Area (sq. ft)	Calculation <small>Coordinate Polygon Area Algorithm using inches</small>
BASEMENT (Living area)	1481	$-(1085.3 + 1091.3) * (482.6 - 488.6) + (1091.3 + 1090.8) * (488.6 - 488.6) + (1090.8 + 1090.8) * (488.6 - 537) + (1090.8 + 1244.3) * (537 - 537) + (1244.3 + 1250.3) * (537 - 535) + (1250.3 + 1314.9) * (535 - 535) + (1314.9 + 1314.9) * (535 - 865.4) + (1314.9 + 1164.5) * (865.4 - 865.4) + (1164.5 + 1164.5) * (865.4 - 909.9) + (1164.5 + 1091.1) * (909.9 - 909.9) + (1091.1 + 1091.1) * (909.9 - 936.8) + (1091.1 + 1002.2) * (936.8 - 936.8) + (1002.2 + 1002.2) * (936.8 - 909.9) + (1002.2 + 925.5) * (909.9 - 909.9) + (925.5 + 919.5) * (909.9 - 903.9) + (919.5 + 919.6) * (903.9 - 903.9) + (919.6 + 919.2) * (903.9 - 857.1) + (919.2 + 818.8) * (857.1 - 857.1) + (818.8 + 818.8) * (857.1 - 879.6) + (818.8 + 726.4) * (879.6 - 879.6) + (726.4 + 726.4) * (879.6 - 554.2) + (726.4 + 917.5) * (554.2 - 554.2) + (917.5 + 917.5) * (554.2 - 482.6) + (917.5 + 1085.3) * (482.6 - 482.6) * 0.5 * 0.00694$
STORAGE (Non-living area)	334	$-(919.2 + 919.2) * (857.1 - 865.4) + (919.2 + 919.5) * (865.4 - 879.6) + (919.5 + 919.5) * (879.6 - 903.9) + (919.5 + 925.5) * (903.9 - 909.9) + (925.5 + 925.5) * (909.9 - 1110.8) + (925.5 + 726.4) * (1110.8 - 1110.8) + (726.4 + 726.4) * (1110.8 - 879.6) + (726.4 + 818.8) * (879.6 - 879.6) + (818.8 + 818.8) * (879.6 - 857.1) + (818.8 + 919.2) * (857.1 - 857.1) * 0.5 * 0.00694$
STORAGE (Non-living area)	139	$-(1192.7 + 1198.7) * (269.9 - 271.8) + (1198.7 + 1250.3) * (271.8 - 271.8) + (1250.3 + 1250.3) * (271.8 - 392.2) + (1250.3 + 1085.3) * (392.2 - 392.2) + (1085.3 + 1085.3) * (392.2 - 269.9) + (1085.3 + 1192.7) * (269.9 - 269.9) * 0.5 * 0.00694 + -(1198.7 + 1091.3) * (275.9 - 275.9) + (1091.3 + 1244.3) * (275.9 - 276) + (1244.3 + 1198.7) * (276 - 275.9) * 0.5 * 0.00694$
STORAGE (Non-living area)	18	$-(1250.3 + 1250.3) * (226.8 - 271.8) + (1250.3 + 1198.7) * (271.8 - 271.8) + (1198.7 + 1192.7) * (271.8 - 269.9) + (1192.7 + 1192.7) * (269.9 - 226.8) + (1192.7 + 1250.3) * (226.8 - 226.8) * 0.5 * 0.00694$
ELECTRICAL ROOM (Non-living area)	164	$-(1250.3 + 1250.3) * (392.2 - 535) + (1250.3 + 1244.3) * (535 - 537) + (1244.3 + 1090.8) * (537 - 537) + (1090.8 + 1091.3) * (537 - 488.6) + (1091.3 + 1085.3) * (488.6 - 482.6) + (1085.3 + 1085.3) * (482.6 - 392.2) + (1085.3 + 1250.3) * (392.2 - 392.2) * 0.5 * 0.00694$
FULL BATH (Non-living area)	79	$-(1383.1 + 1383.1) * (-162.6 - 3.4) + (1383.1 + 1314.3) * (3.4 - 3.4) + (1314.3 + 1314.3) * (3.4 - -156.6) + (1314.3 + 1320.3) * (-156.6 - -156.6) + (1320.3 + 1320.3) * (-156.6 - -162.6) + (1320.3 + 1383.1) * (-162.6 - -162.6) * 0.5 * 0.00694$
COVERED PATIO (Non-living area)	471	$-(1085.3 + 1085.3) * (322.2 - 482.6) + (1085.3 + 917.5) * (482.6 - 482.6) + (917.5 + 917.5) * (482.6 - 554.2) + (917.5 + 738.5) * (554.2 - 554.2) + (738.5 + 738.5) * (554.2 - 354.8) + (738.5 + 777.1) * (354.8 - 322.2) + (777.1 + 1085.3) * (322.2 - 322.2) * 0.5 * 0.00694$
PATIO (Non-living area)	1659	$-(1177.4 + 1177.4) * (-309 - -274) + (1177.4 + 1314.3) * (-274 - -274) + (1314.3 + 1314.3) * (-274 - -0.1) + (1314.3 + 1195.5) * (-0.1 - -0.1) + (1195.5 + 1195.5) * (-0.1 - 19.6) + (1195.5 + 1206.8) * (19.6 - 38.6) + (1206.8 + 1309.1) * (38.6 - 101.3) + (1309.1 + 1310) * (101.3 - 151.5) + (1310 + 1319.1) * (151.5 - 188.4) + (1319.1 + 1358.9) * (188.4 - 295.7) + (1358.9 + 1358.9) * (295.7 - 412.3) + (1358.9 + 1250.3) * (412.3 - 412.3) + (1250.3 + 1250.3) * (412.3 - 370.7) + (1250.3 + 1244.3) * (370.7 - 370.7) + (1244.3 + 1244.3) * (370.7 - 305.6) + (1244.3 + 1250.3) * (305.6 - 305.6) + (1250.3 + 1250.3) * (305.6 - 226.8) + (1250.3 + 1138.2) * (226.8 - 226.8) + (1138.2 + 1138.2) * (226.8 - 177.2) + (1138.2 + 1161.9) * (177.2 - 153) + (1161.9 + 1245.1) * (153 - 153) + (1245.1 + 1245.1) * (153 - 149) + (1245.1 + 1160.2) * (149 - 149) + (1160.2 + 1134.2) * (149 - 175.6) + (1134.2 + 1134.2) * (175.6 - 226.8) + (1134.2 + 1096) * (226.8 - 226.8) + (1096 + 1110.7) * (226.8 - 201.5) + (1110.7 + 1107.2) * (201.5 - 199.5) + (1107.2 + 1089.1) * (199.5 - 230.8) + (1089.1 + 1192.7) * (230.8 - 230.8) + (1192.7 + 1192.7) * (230.8 - 270) + (1192.7 + 1085.3) * (270 - 270) + (1085.3 + 1085.3) * (270 - 322.2) + (1085.3 + 777.1) * (322.2 - 322.2) + (777.1 + 789) * (322.2 - 312.4) + (789 + 800.9) * (312.4 - 312.4) + (800.9 + 800.9) * (312.4 - 278.9) + (800.9 + 743.1) * (278.9 - 217.4) + (743.1 + 713.6) * (217.4 - 152.9) + (713.6 + 695.2) * (152.9 - 46.1) + (695.2 + 699.2) * (46.1 - -8.9) + (699.2 + 817.2) * (-8.9 - -8.9) + (817.2 + 817.2) * (-8.9 - 105.2) + (817.2 + 939.5) * (105.2 - 105.2) + (939.5 + 939.5) * (105.2 - -8.9) + (939.5 + 1081.5) * (-8.9 - -8.9) + (1081.5 + 1081.5) * (-8.9 - -232.3) + (1081.5 + 1059.4) * (-232.3 - -232.3) + (1059.4 + 1059.4) * (-232.3 - -309) + (1059.4 + 1177.4) * (-309 - -309) * 0.5 * 0.00694$



# 198 Broadbill Dr, Mooresville, NC, US

Gross Living Area: 4432 sq. ft

## Level 2

Space	Area (sq. ft)	Calculation <small>Coordinate Polygon Area Algorithm using inches</small>
1ST FLOOR (Living area)	2207	$-\left((1250.3 + 1250.3) * (386.2 - 535) + (1250.3 + 1314.9) * (535 - 535) + (1314.9 + 1314.9) * (535 - 881.6) + (1314.9 + 1200.8) * (881.6 - 881.6) + (1200.8 + 1200.8) * (881.6 - 865.4) + (1200.8 + 1164.5) * (865.4 - 865.4) + (1164.5 + 1164.5) * (865.4 - 909.9) + (1164.5 + 1091.3) * (909.9 - 909.9) + (1091.3 + 1091.3) * (909.9 - 936.8) + (1091.3 + 1002.2) * (936.8 - 936.8) + (1002.2 + 1002.2) * (936.8 - 876.4) + (1002.2 + 925.5) * (876.4 - 876.4) + (925.5 + 925.5) * (876.4 - 1087.7) + (925.5 + 860.6) * (1087.7 - 1087.7) + (860.6 + 860.6) * (1087.7 - 1110.8) + (860.6 + 576) * (1110.8 - 1110.8) + (576 + 576) * (1110.8 - 1017.5) + (576 + 576) * (1017.5 - 1017.3) + (576 + 576) * (1017.3 - 882.4) + (576 + 726.4) * (882.4 - 882.4) + (726.4 + 726.4) * (882.4 - 671.2) + (726.4 + 714.1) * (671.2 - 671.2) + (714.1 + 714.1) * (671.2 - 600.8) + (714.1 + 726.4) * (600.8 - 600.8) + (726.4 + 726.4) * (600.8 - 561.8) + (726.4 + 772.7) * (561.8 - 561.8) + (772.7 + 772.7) * (561.8 - 554.2) + (772.7 + 866.4) * (554.2 - 554.2) + (866.4 + 866.4) * (554.2 - 561.8) + (866.4 + 917.5) * (561.8 - 561.8) + (917.5 + 917.5) * (561.8 - 491.2) + (917.5 + 951.1) * (491.2 - 491.2) + (951.1 + 951.1) * (491.2 - 482.6) + (951.1 + 1066) * (482.6 - 482.6) + (1066 + 1066) * (482.6 - 491.2) + (1066 + 1085.3) * (491.2 - 491.2) + (1085.3 + 1085.3) * (491.2 - 386.2) + (1085.3 + 1250.3) * (386.2 - 386.2)) * 0.5 * 0.00694$
GARAGE (Non-living area)	525	$-\left((925.5 + 925.5) * (1087.7 - 1365.8) + (925.5 + 862.5) * (1365.8 - 1365.8) + (862.5 + 862.5) * (1365.8 - 1375.4) + (862.5 + 780.9) * (1375.4 - 1375.4) + (780.9 + 780.9) * (1375.4 - 1365.8) + (780.9 + 638.1) * (1365.8 - 1365.8) + (638.1 + 638.1) * (1365.8 - 1110.8) + (638.1 + 860.6) * (1110.8 - 1110.8) + (860.6 + 860.6) * (1110.8 - 1087.7) + (860.6 + 925.5) * (1087.7 - 1087.7)) * 0.5 * 0.00694$
PATIO (Non-living area)	119	$-\left((594.5 + 642.1) * (705.8 - 780.8) + (642.1 + 726.4) * (780.8 - 780.8) + (726.4 + 726.4) * (780.8 - 882.4) + (726.4 + 580.7) * (882.4 - 882.4) + (580.7 + 580.7) * (882.4 - 816) + (580.7 + 605.8) * (816 - 802.8) + (605.8 + 603.9) * (802.8 - 799.2) + (603.9 + 609.7) * (799.2 - 800.8) + (609.7 + 562.4) * (800.8 - 726.2) + (562.4 + 594.5) * (726.2 - 705.8)) * 0.5 * 0.00694$
DECK (Non-living area)	660	$-\left((1246.3 + 1246.3) * (230.6 - 386.2) + (1246.3 + 1085.3) * (386.2 - 386.2) + (1085.3 + 1085.3) * (386.2 - 491.2) + (1085.3 + 1066) * (491.2 - 491.2) + (1066 + 1066) * (491.2 - 482.6) + (1066 + 951.1) * (482.6 - 482.6) + (951.1 + 951.1) * (482.6 - 491.2) + (951.1 + 917.5) * (491.2 - 491.2) + (917.5 + 917.5) * (491.2 - 561.8) + (917.5 + 866.4) * (561.8 - 561.8) + (866.4 + 866.4) * (561.8 - 554.2) + (866.4 + 772.7) * (554.2 - 554.2) + (772.7 + 772.7) * (554.2 - 561.8) + (772.7 + 735.1) * (561.8 - 561.8) + (735.1 + 735.1) * (561.8 - 385.8) + (735.1 + 797) * (385.8 - 318.4) + (797 + 1041.5) * (318.4 - 318.4) + (1041.5 + 1081.8) * (318.4 - 274.1) + (1081.8 + 1203.8) * (274.1 - 274.1) + (1203.8 + 1203.8) * (274.1 - 270.1) + (1203.8 + 1089.7) * (270.1 - 270.1) + (1089.7 + 1089.7) * (270.1 - 230.6) + (1089.7 + 1246.3) * (230.6 - 230.6)) * 0.5 * 0.00694$
FIREPLACE (Non-living area)	12	$-\left((576 + 576) * (945 - 1023.5) + (576 + 554.1) * (1023.5 - 1023.5) + (554.1 + 554.1) * (1023.5 - 945) + (554.1 + 576) * (945 - 945)) * 0.5 * 0.00694$



# 198 Broadbill Dr, Mooresville, NC, US

Gross Living Area: 4432 sq. ft

## Level 3

Space	Area (sq. ft)	Calculation <small>Coordinate Polygon Area Algorithm using inches</small>
2ND FLOOR (Living area)	744	$-\left((866.4 + 866.4) * (554.1 - 561.8) + (866.4 + 917.5) * (561.8 - 561.8) + (917.5 + 923.5) * (561.8 - 567.8) + (923.5 + 923.5) * (567.8 - 724.4) + (923.5 + 1091.3) * (724.4 - 724.4) + (1091.3 + 1091.3) * (724.4 - 831.1) + (1091.3 + 1085.3) * (831.1 - 831.1) + (1085.3 + 923.5) * (831.1 - 832.7) + (923.5 + 923.5) * (832.7 - 870.4) + (923.5 + 925.5) * (870.4 - 876.4) + (925.5 + 925.5) * (876.4 - 996.6) + (925.5 + 862.5) * (996.6 - 996.6) + (862.5 + 862.5) * (996.6 - 1006.8) + (862.5 + 787.4) * (1006.8 - 1006.8) + (787.4 + 787.4) * (1006.8 - 996.6) + (787.4 + 727.4) * (996.6 - 996.6) + (727.4 + 727.4) * (996.6 - 973.1) + (727.4 + 714.1) * (973.1 - 973.1) + (714.1 + 714.1) * (973.1 - 897) + (714.1 + 726.4) * (897 - 897) + (726.4 + 726.4) * (897 - 671.2) + (726.4 + 714.1) * (671.2 - 671.2) + (714.1 + 714.1) * (671.2 - 600.8) + (714.1 + 726.4) * (600.8 - 600.8) + (726.4 + 726.4) * (600.8 - 561.8) + (726.4 + 772.7) * (561.8 - 561.8) + (772.7 + 772.7) * (561.8 - 554.1) + (772.7 + 866.4) * (554.1 - 554.1)) * 0.5 * 0.00694$
OPEN TO BELOW (Non-living area)	25	$-\left((1008.1 + 1008.2) * (832.2 - 870.4) + (1008.2 + 1002.2) * (870.4 - 876.4) + (1002.2 + 925.5) * (876.4 - 876.4) + (925.5 + 923.5) * (876.4 - 870.4) + (923.5 + 923.5) * (870.4 - 833.7) + (923.5 + 1008.1) * (833.7 - 832.2)) * 0.5 * 0.00694$
OPEN TO BELOW (Non-living area)	285	$-\left((1091.3 + 1091.3) * (482.6 - 724.4) + (1091.3 + 923.5) * (724.4 - 724.4) + (923.5 + 923.5) * (724.4 - 567.8) + (923.5 + 917.5) * (567.8 - 561.8) + (917.5 + 917.5) * (561.8 - 482.6) + (917.5 + 1091.3) * (482.6 - 482.6)) * 0.5 * 0.00694$