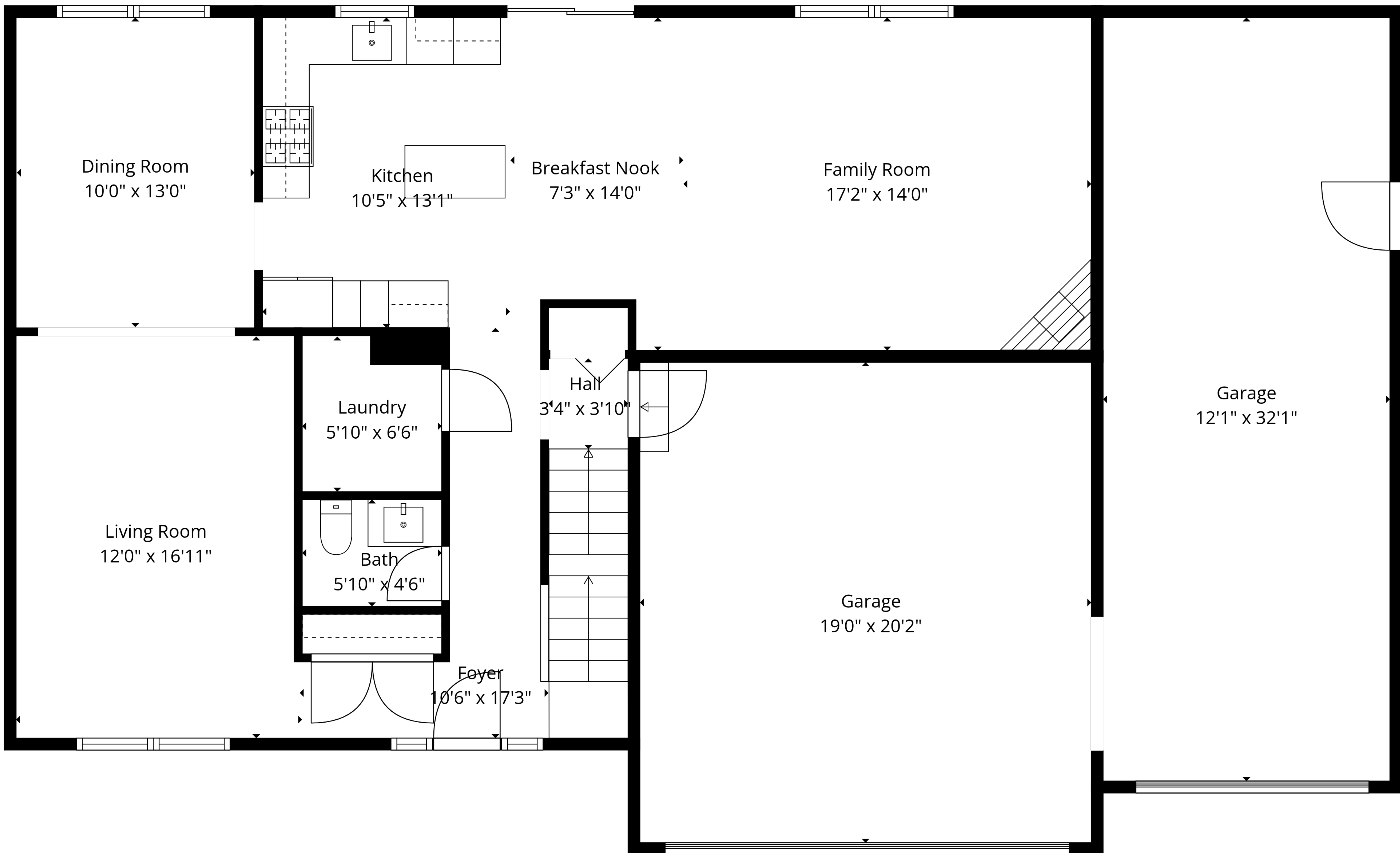


TOTAL: 2991 sq. ft

BELOW GRADE: 930 sq. ft, FLOOR 2: 1053 sq. ft, FLOOR 3: 1008 sq. ft
EXCLUDED AREAS: ELECTRICAL ROOM: 123 sq. ft, GARAGE: 771 sq. ft, ATTIC: 95 sq. ft,
LOW CEILING: 32 sq. ft, WALLS: 282 sq. ft

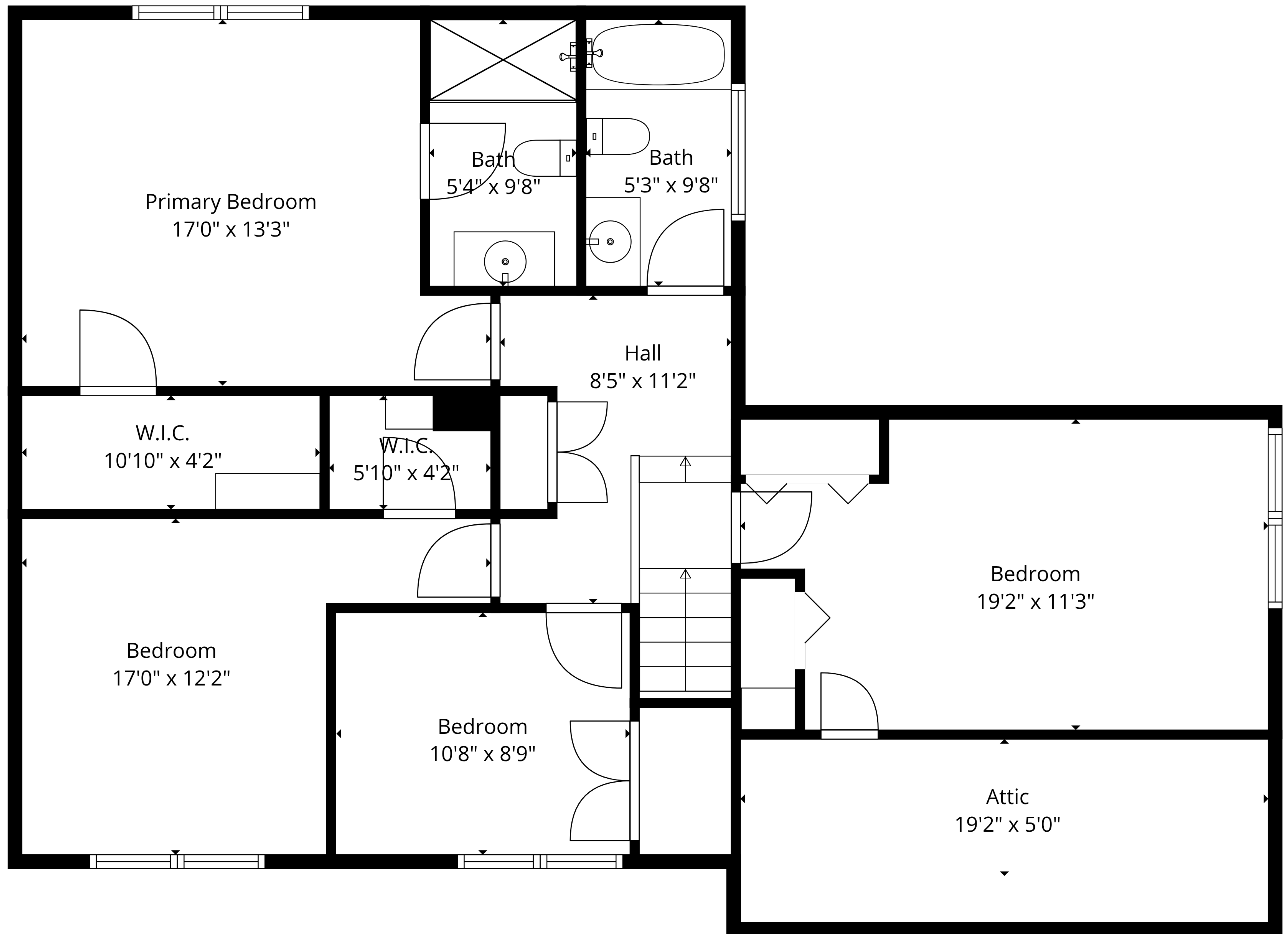


TOTAL: 2991 sq. ft

BELOW GRADE: 930 sq. ft, FLOOR 2: 1053 sq. ft, FLOOR 3: 1008 sq. ft

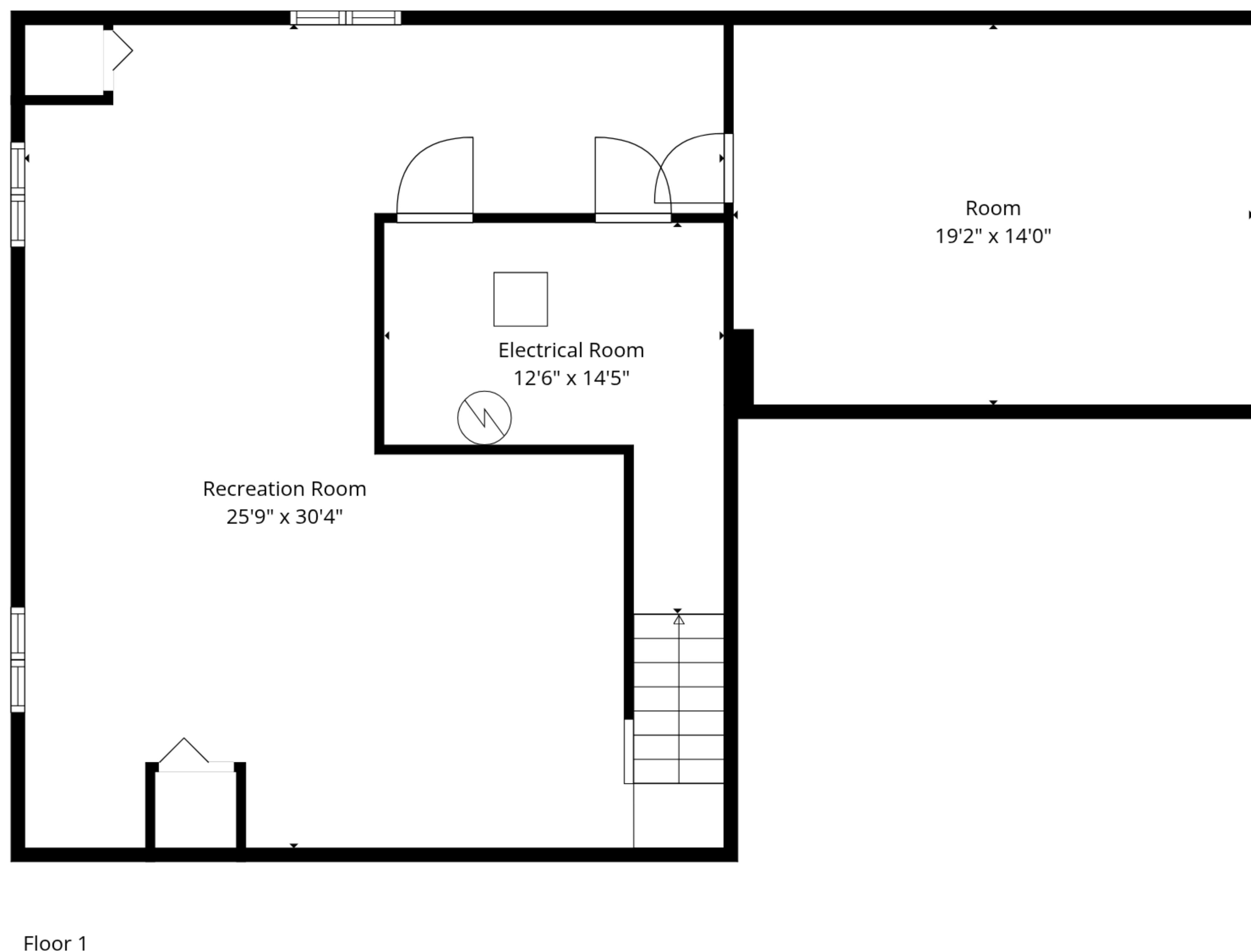
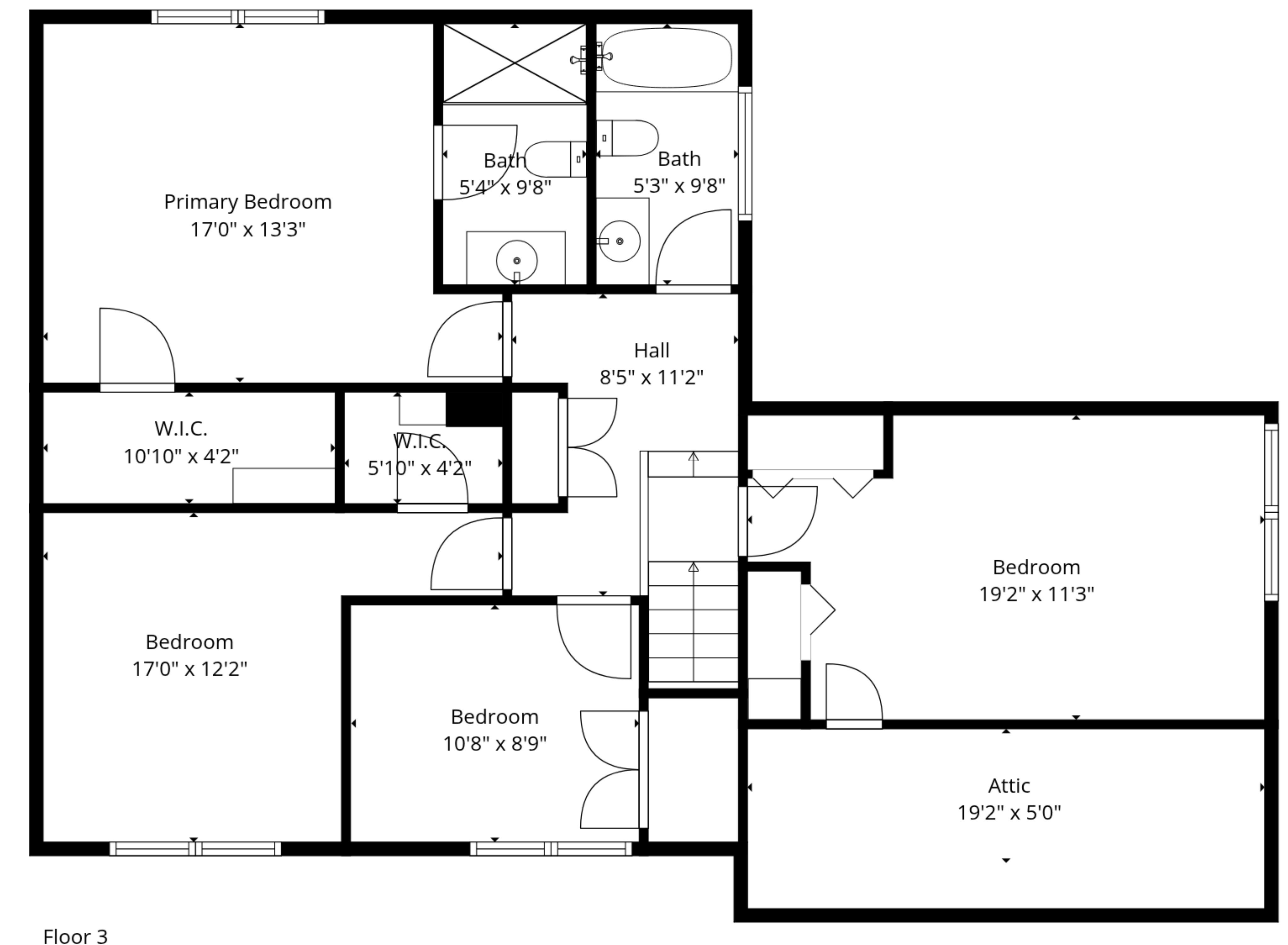
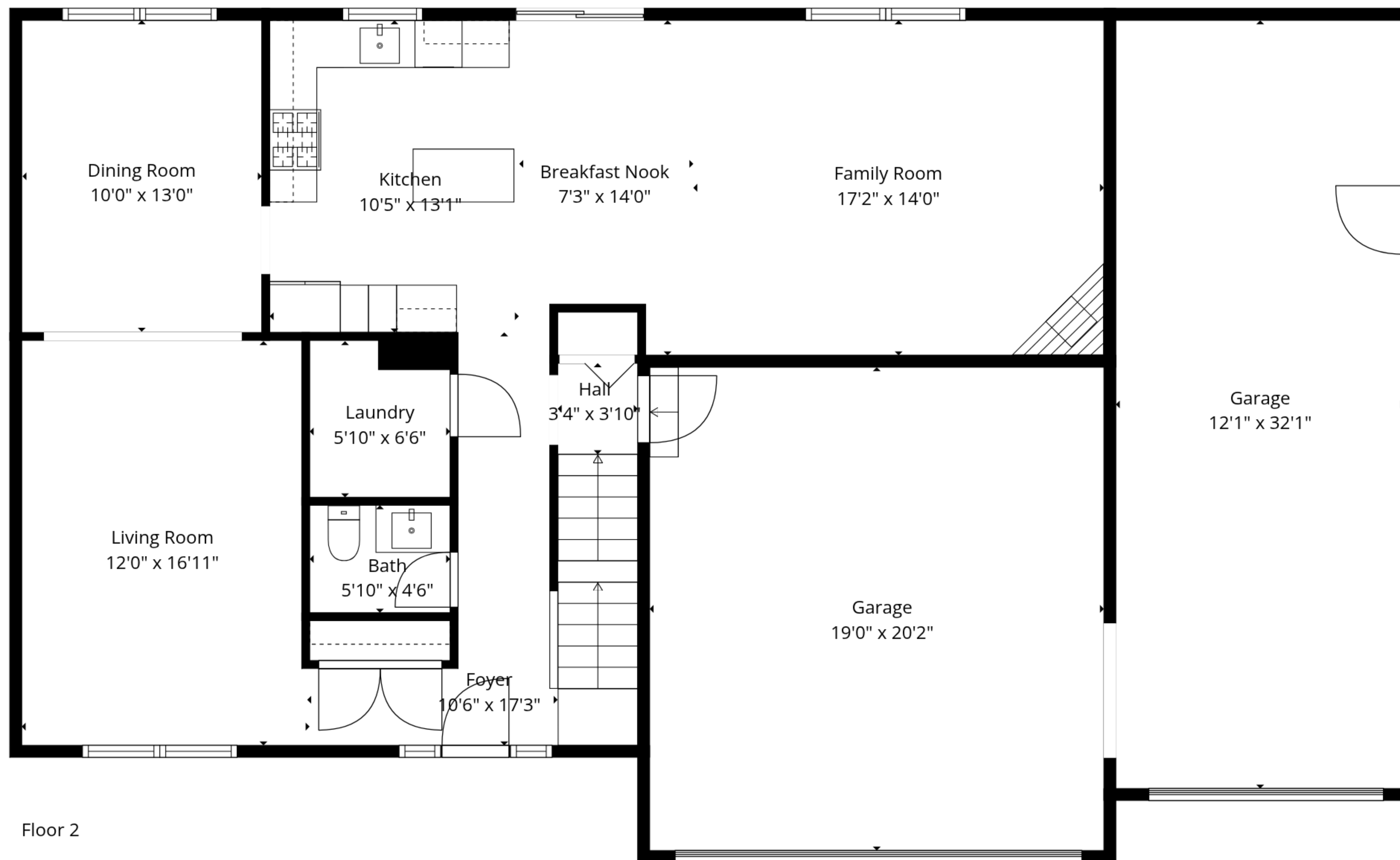
EXCLUDED AREAS: ELECTRICAL ROOM: 123 sq. ft, GARAGE: 771 sq. ft, ATTIC: 95 sq. ft,

LOW CEILING: 32 sq. ft, WALLS: 282 sq. ft



TOTAL: 2991 sq. ft

BELOW GRADE: 930 sq. ft, FLOOR 2: 1053 sq. ft, FLOOR 3: 1008 sq. ft
EXCLUDED AREAS: ELECTRICAL ROOM: 123 sq. ft, GARAGE: 771 sq. ft, ATTIC: 95 sq. ft,
LOW CEILING: 32 sq. ft, WALLS: 282 sq. ft



TOTAL: 2991 sq. ft
 BELOW GRADE: 930 sq. ft, FLOOR 2: 1053 sq. ft, FLOOR 3: 1008 sq. ft
 EXCLUDED AREAS: ELECTRICAL ROOM: 123 sq. ft, GARAGE: 771 sq. ft, ATTIC: 95 sq. ft,
 LOW CEILING: 32 sq. ft, WALLS: 282 sq. ft