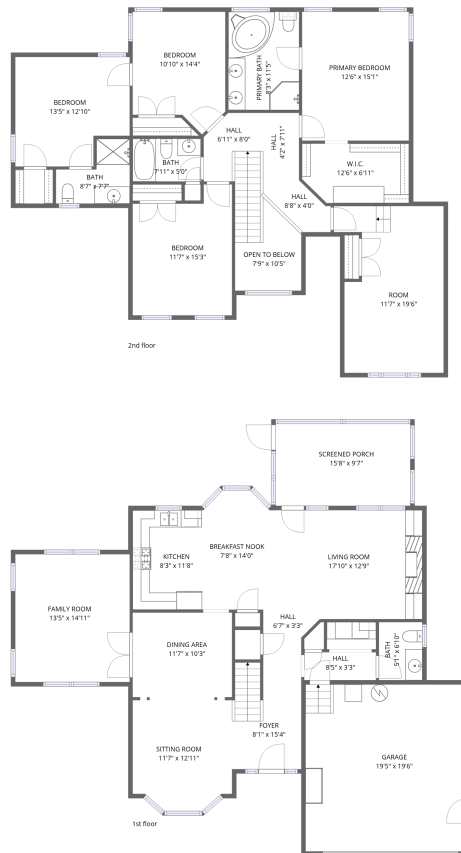


Home data report

304 Autumn Way, Yorktown, VA, US



Total Area: 2524 sq. ft

1st Floor: 1143 sq. ft, 2nd Floor: 1381 sq. ft

Excluded: Garage 379 sq. ft, Screened porch 151 sq. ft, Open to below 58 sq. ft, Walls: 231 sq. ft

Property summary

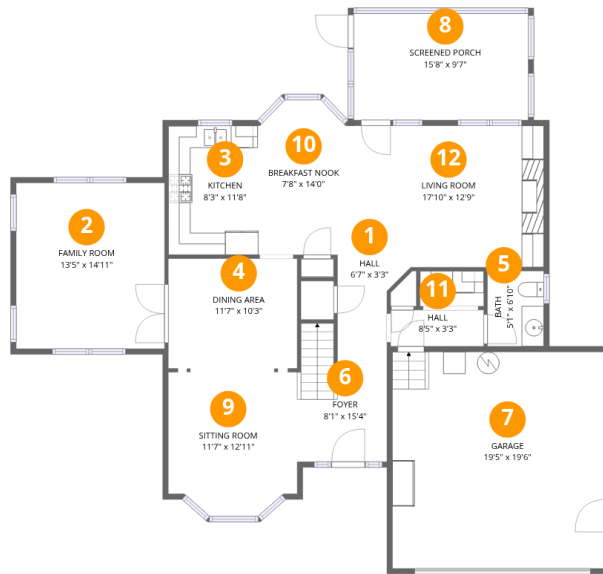


Home data report

304 Autumn Way, Yorktown, VA, US

 **1**
Half baths

 **1**
Garages



Room dimensions

Floor 1

Total: 1143sqft

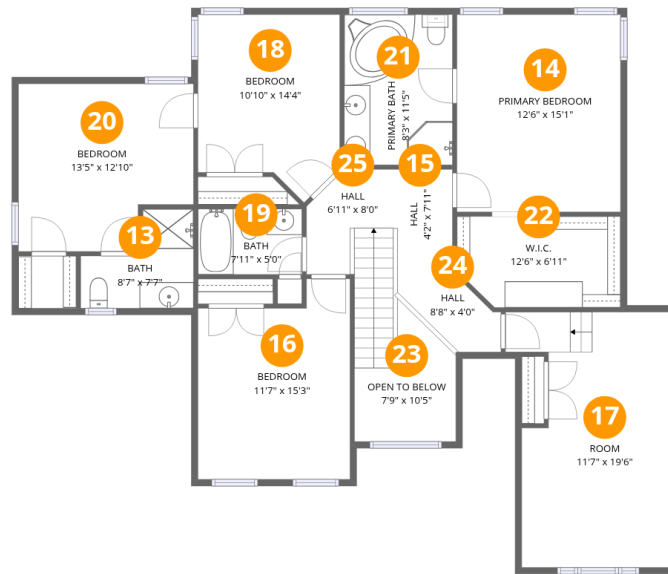
Excluded: 530sqft

#		Dimensions	sqft	Counted as living area
1	Hall	6'7" x 3'3"	22 sq. ft	Yes
2	Family Room	13'5" x 14'11"	200 sq. ft	Yes
3	Kitchen	8'3" x 11'8"	96 sq. ft	Yes
4	Dining Area	11'7" x 10'3"	119 sq. ft	Yes
5	Bath	5'1" x 6'10"	34 sq. ft	Yes
6	Foyer	8'1" x 15'4"	124 sq. ft	Yes
7	Garage	19'5" x 19'6"	379 sq. ft	No
8	Screened Porch	15'8" x 9'7"	151 sq. ft	No
9	Sitting Room	11'7" x 12'11"	150 sq. ft	Yes
10	Breakfast Nook	7'8" x 14'0"	108 sq. ft	Yes
11	Hall	8'5" x 3'3"	27 sq. ft	Yes

Home data report

304 Autumn Way, Yorktown, VA, US

#		Dimensions	sqft	Counted as living area
12	Living Room	17'10" x 12'9"	228 sq. ft	Yes



Room dimensions

Floor 2

Total:1381sqft

Excluded: 58sqft

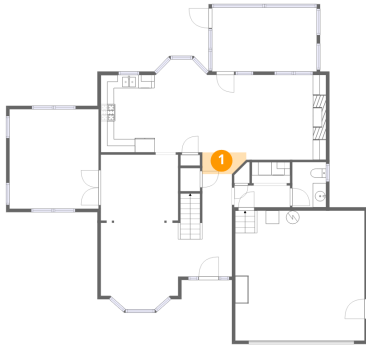
#		Dimensions	sqft	Counted as living area
13	Bath	8'7" x 7'7"	65 sq. ft	Yes
14	Primary Bedroom	12'6" x 15'1"	188 sq. ft	Yes
15	Hall	4'2" x 7'11"	33 sq. ft	Yes
16	Bedroom	11'7" x 15'3"	178 sq. ft	Yes
17	Room	11'7" x 19'6"	226 sq. ft	Yes
18	Bedroom	10'10" x 14'4"	155 sq. ft	Yes
19	Bath	7'11" x 5'0"	40 sq. ft	Yes
20	Bedroom	13'5" x 12'10"	171 sq. ft	Yes
21	Primary Bath	8'3" x 11'5"	95 sq. ft	Yes
22	W.I.C.	12'6" x 6'11"	87 sq. ft	Yes
23	Open To Below	7'9" x 10'5"	81 sq. ft	No

Home data report

304 Autumn Way, Yorktown, VA, US

#		Dimensions	sqft	Counted as living area
24	Hall	8'8" x 4'0"	35 sq. ft	Yes
25	Hall	6'11" x 8'0"	55 sq. ft	Yes

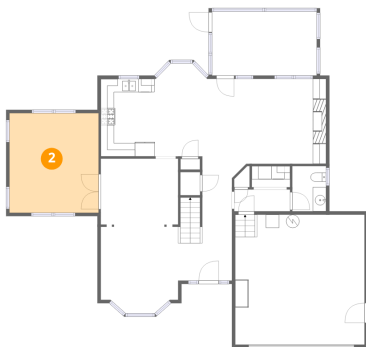
1 Floor 1 - Hall



Dimensions: 6'7" x 3'3"
Area: 22 sq. ft
Counted as living area: Yes

Heated: Yes
Finished: Yes
Enclosed: Yes
Contiguous: Yes
Permitted: Yes
Wet space: No
Addition: No
Conversion: No

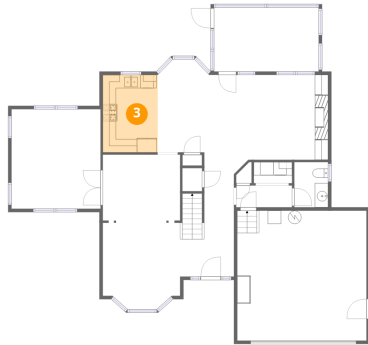
2 Floor 1 - Family Room



Dimensions: 13'5" x 14'11"
Area: 200 sq. ft
Counted as living area: Yes

Heated: Yes
Finished: Yes
Enclosed: Yes
Contiguous: Yes
Permitted: Yes
Wet space: No
Addition: No
Conversion: No

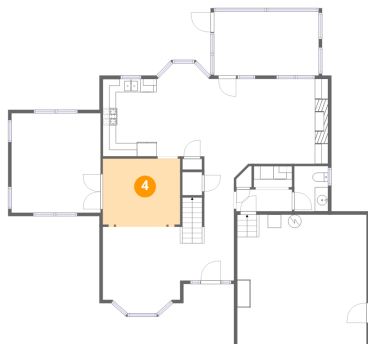
3 Floor 1 - Kitchen



Dimensions: 8'3" x 11'8"
Area: 96 sq. ft
Counted as living area: Yes

Heated: Yes
Finished: Yes
Enclosed: Yes
Contiguous: Yes
Permitted: Yes
Wet space: No
Addition: No
Conversion: No

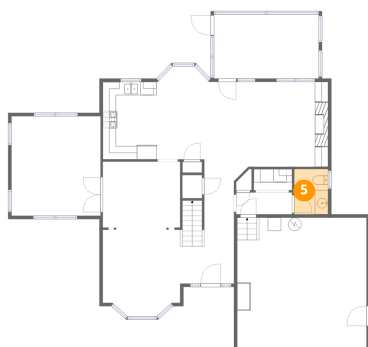
4 Floor 1 - Dining Area



Dimensions: 11'7" x 10'3"
Area: 119 sq. ft
Counted as living area: Yes

Heated: Yes
Finished: Yes
Enclosed: Yes
Contiguous: Yes
Permitted: Yes
Wet space: No
Addition: No
Conversion: No

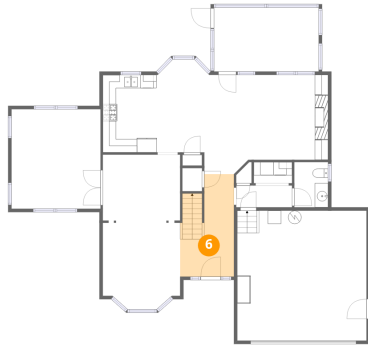
5 Floor 1 - Bath



Dimensions: 5'1" x 6'10"
Area: 34 sq. ft
Counted as living area: Yes

Heated: Yes
Finished: Yes
Enclosed: Yes
Contiguous: Yes
Permitted: Yes
Wet space: Yes
Addition: No
Conversion: No

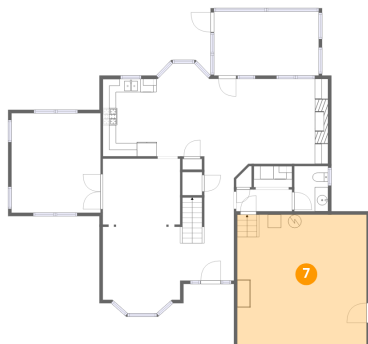
6 Floor 1 - Foyer



Dimensions: 8'1" x 15'4"
Area: 124 sq. ft
Counted as living area: Yes

Heated: Yes
Finished: Yes
Enclosed: Yes
Contiguous: Yes
Permitted: Yes
Wet space: No
Addition: No
Conversion: No

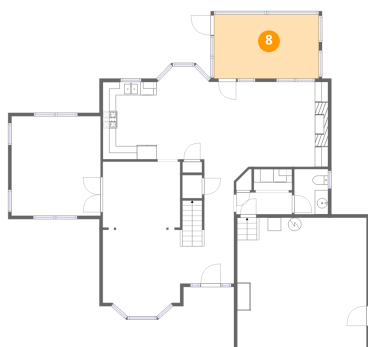
7 Floor 1 - Garage



Dimensions: 19'5" x 19'6"
Area: 379 sq. ft
Counted as living area: No

Heated: No
Finished: No
Enclosed: Yes
Contiguous: Yes
Permitted: Yes
Wet space: No
Addition: No
Conversion: No

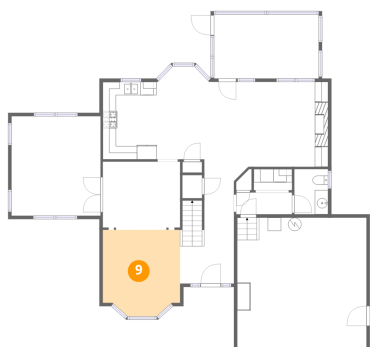
8 Floor 1 - Screened Porch



Dimensions: 15'8" x 9'7"
Area: 151 sq. ft
Counted as living area: No

Heated: No
Finished: No
Enclosed: No
Contiguous: Yes
Permitted: Yes
Wet space: No
Addition: No
Conversion: No

9 Floor 1 - Sitting Room



Dimensions: 11'7" x 12'11"
Area: 150 sq. ft
Counted as living area: Yes

Heated: Yes
Finished: Yes
Enclosed: Yes
Contiguous: Yes
Permitted: Yes
Wet space: No
Addition: No
Conversion: No

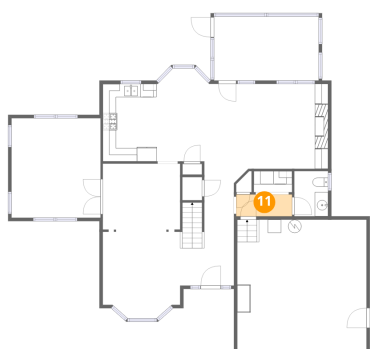
10 Floor 1 - Breakfast Nook



Dimensions: 7'8" x 14'0"
Area: 108 sq. ft
Counted as living area: Yes

Heated: Yes
Finished: Yes
Enclosed: Yes
Contiguous: Yes
Permitted: Yes
Wet space: No
Addition: No
Conversion: No

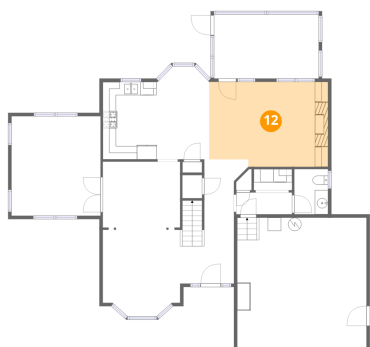
11 Floor 1 - Hall



Dimensions: 8'5" x 3'3"
Area: 27 sq. ft
Counted as living area: Yes

Heated: Yes
Finished: Yes
Enclosed: Yes
Contiguous: Yes
Permitted: Yes
Wet space: No
Addition: No
Conversion: No

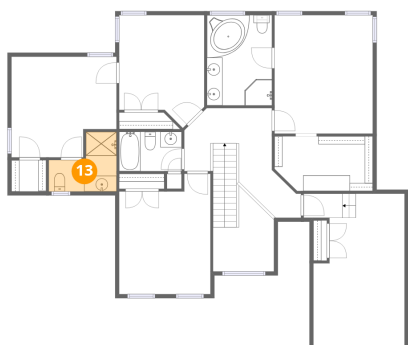
12 Floor 1 - Living Room



Dimensions: 17'10" x 12'9"
Area: 228 sq. ft
Counted as living area: Yes

Heated: Yes
Finished: Yes
Enclosed: Yes
Contiguous: Yes
Permitted: Yes
Wet space: No
Addition: No
Conversion: No

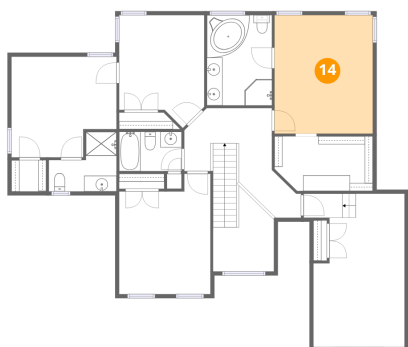
13 Floor 2 - Bath



Dimensions: 8'7" x 7'7"
Area: 65 sq. ft
Counted as living area: Yes

Heated: Yes
Finished: Yes
Enclosed: Yes
Contiguous: Yes
Permitted: Yes
Wet space: Yes
Addition: No
Conversion: No

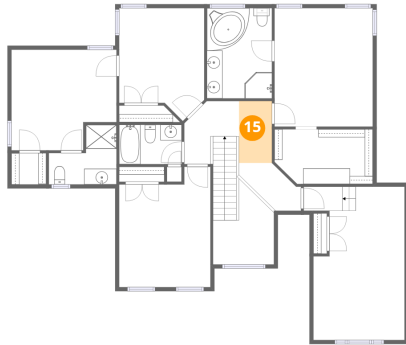
14 Floor 2 - Primary Bedroom



Dimensions: 12'6" x 15'1"
Area: 188 sq. ft
Counted as living area: Yes

Heated: Yes
Finished: Yes
Enclosed: Yes
Contiguous: Yes
Permitted: Yes
Wet space: No
Addition: No
Conversion: No

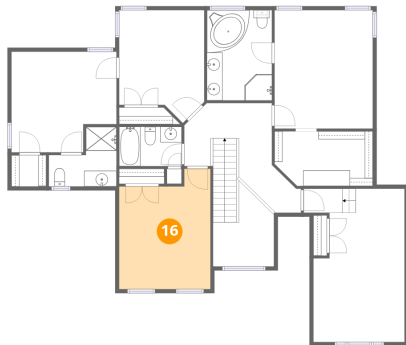
15 Floor 2 - Hall



Dimensions: 4'2" x 7'11"
Area: 33 sq. ft
Counted as living area: Yes

Heated: Yes
Finished: Yes
Enclosed: Yes
Contiguous: Yes
Permitted: Yes
Wet space: No
Addition: No
Conversion: No

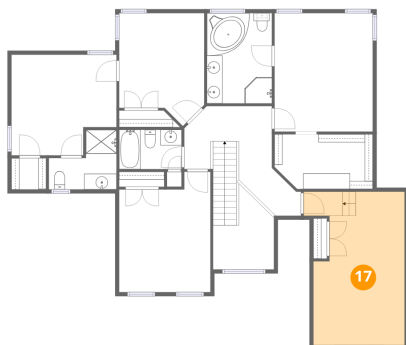
16 Floor 2 - Bedroom



Dimensions: 11'7" x 15'3"
Area: 178 sq. ft
Counted as living area: Yes

Heated: Yes
Finished: Yes
Enclosed: Yes
Contiguous: Yes
Permitted: Yes
Wet space: No
Addition: No
Conversion: No

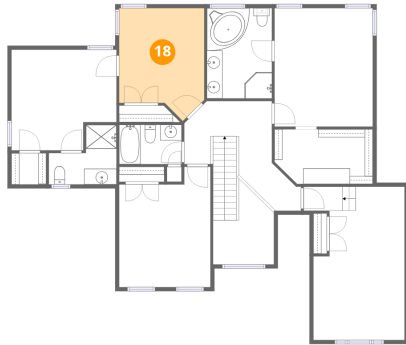
17 Floor 2 - Room



Dimensions: 11'7" x 19'6"
Area: 226 sq. ft
Counted as living area: Yes

Heated: Yes
Finished: Yes
Enclosed: Yes
Contiguous: Yes
Permitted: Yes
Wet space: No
Addition: No
Conversion: No

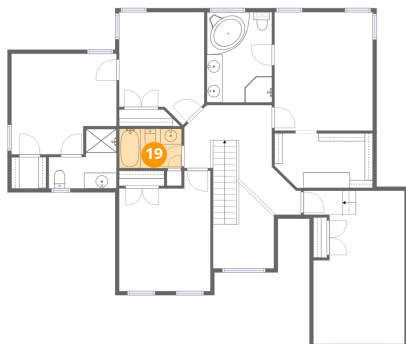
18 Floor 2 - Bedroom



Dimensions: 10'10" x 14'4"
Area: 155 sq. ft
Counted as living area: Yes

Heated: Yes
Finished: Yes
Enclosed: Yes
Contiguous: Yes
Permitted: Yes
Wet space: No
Addition: No
Conversion: No

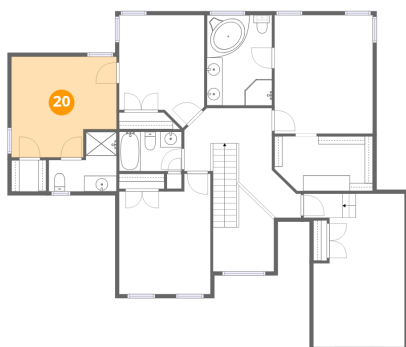
19 Floor 2 - Bath



Dimensions: 7'11" x 5'0"
Area: 40 sq. ft
Counted as living area: Yes

Heated: Yes
Finished: Yes
Enclosed: Yes
Contiguous: Yes
Permitted: Yes
Wet space: Yes
Addition: No
Conversion: No

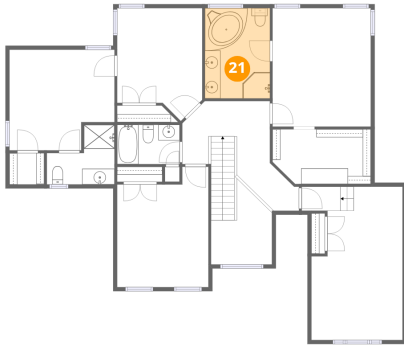
20 Floor 2 - Bedroom



Dimensions: 13'5" x 12'10"
Area: 171 sq. ft
Counted as living area: Yes

Heated: Yes
Finished: Yes
Enclosed: Yes
Contiguous: Yes
Permitted: Yes
Wet space: No
Addition: No
Conversion: No

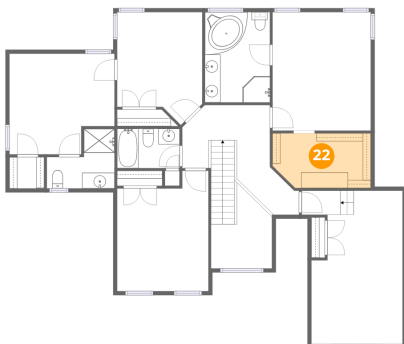
21 Floor 2 - Primary Bath



Dimensions: 8'3" x 11'5"
Area: 95 sq. ft
Counted as living area: Yes

Heated: Yes
Finished: Yes
Enclosed: Yes
Contiguous: Yes
Permitted: Yes
Wet space: Yes
Addition: No
Conversion: No

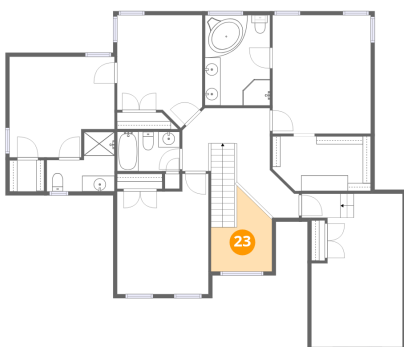
22 Floor 2 - W.I.C.



Dimensions: 12'6" x 6'11"
Area: 87 sq. ft
Counted as living area: Yes

Heated: Yes
Finished: Yes
Enclosed: Yes
Contiguous: Yes
Permitted: Yes
Wet space: No
Addition: No
Conversion: No

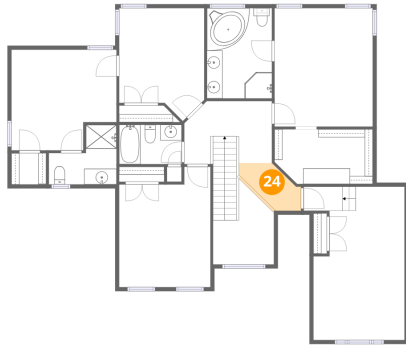
23 Floor 2 - Open To Below



Dimensions: 7'9" x 10'5"
Area: 81 sq. ft
Counted as living area: No

Heated: No
Finished: No
Enclosed: No
Contiguous: Yes
Permitted: No
Wet space: No
Addition: No
Conversion: No

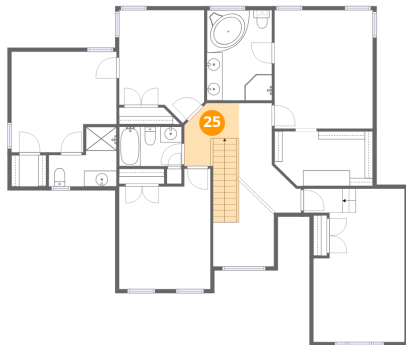
24 Floor 2 - Hall



Dimensions: 8'8" x 4'0"
Area: 35 sq. ft
Counted as living area: Yes

Heated: Yes
Finished: Yes
Enclosed: Yes
Contiguous: Yes
Permitted: Yes
Wet space: No
Addition: No
Conversion: No

25 Floor 2 - Hall



Dimensions: 6'11" x 8'0"
Area: 55 sq. ft
Counted as living area: Yes

Heated: Yes
Finished: Yes
Enclosed: Yes
Contiguous: Yes
Permitted: Yes
Wet space: No
Addition: No
Conversion: No