

## Home data report

21600 Patrick Henry Highway, Jetersville, Amelia County,  
Virginia, United States, 23083

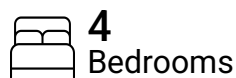


**Total Area: 1775 sq. ft**

Basement: 0 sq. ft, 1st Floor: 1187 sq. ft, 2nd Floor: 588 sq. ft

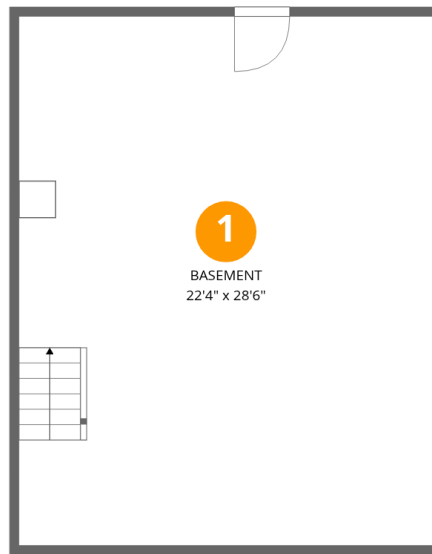
Excluded: Basement 635 sq. ft, Porch 72 sq. ft, Walls: 187 sq. ft

## Property summary



Home data report

21600 Patrick Henry Highway, Jetersville, Amelia County,  
Virginia, United States, 23083



## Room dimensions

Floor 1 Below grade

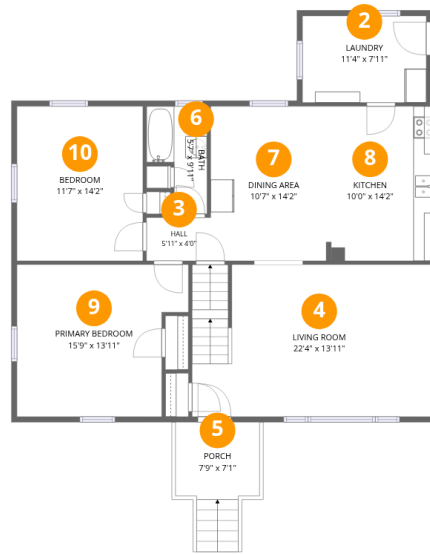
Total:0sqft

Excluded: 635sqft

#		Dimensions	sqft	Counted as living area
1	Basement	22'4" x 28'6"	635 sq. ft	No

## Home data report

21600 Patrick Henry Highway, Jetersville, Amelia County,  
Virginia, United States, 23083



## Room dimensions

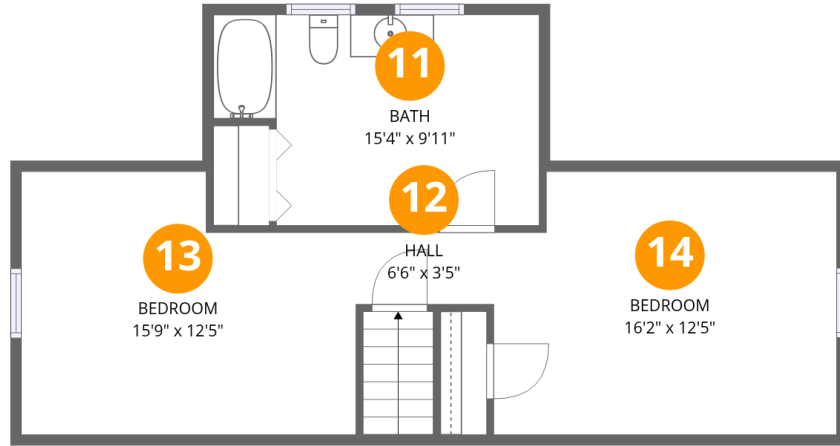
Floor 2

Total:1187sqft Excluded: 72sqft

#		Dimensions	sqft	Counted as living area
2	Laundry	11'4" x 7'11"	90 sq. ft	Yes
3	Hall	5'11" x 4'0"	23 sq. ft	Yes
4	Living Room	22'4" x 13'11"	309 sq. ft	Yes
5	Porch	7'9" x 7'1"	72 sq. ft	No
6	Bath	5'7" x 9'11"	43 sq. ft	Yes
7	Dining Area	10'7" x 14'2"	150 sq. ft	Yes
8	Kitchen	10'0" x 14'2"	142 sq. ft	Yes
9	Primary Bedroom	15'9" x 13'11"	196 sq. ft	Yes
10	Bedroom	11'7" x 14'2"	164 sq. ft	Yes

Home data report

21600 Patrick Henry Highway, Jetersville, Amelia County, Virginia, United States, 23083



## Room dimensions

Floor 3

Total:588sqft

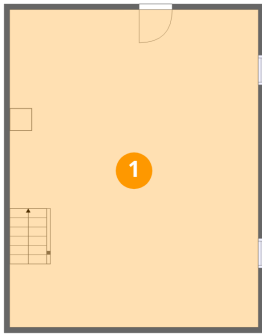
Excluded: 0sqft

#		Dimensions	sqft	Counted as living area
11	Bath	15'4" x 9'11"	137 sq. ft	Yes
12	Hall	6'6" x 3'5"	22 sq. ft	Yes
13	Bedroom	15'9" x 12'5"	175 sq. ft	Yes
14	Bedroom	16'2" x 12'5"	193 sq. ft	Yes

21600 Patrick Henry Highway, Jetersville, Amelia County,  
Virginia, United States, 23083

**1** Floor 1 - Basement

---



Dimensions: 22'4" x 28'6"  
Area: 635 sq. ft  
Counted as living area: No

Heated: Yes  
Finished: No  
Enclosed: Yes  
Contiguous: Yes  
Permitted: Yes  
Wet space: No  
Addition: No  
Conversion: No

**2** Floor 2 - Laundry

---



Dimensions: 11'4" x 7'11"  
Area: 90 sq. ft  
Counted as living area: Yes

Heated: Yes  
Finished: Yes  
Enclosed: Yes  
Contiguous: Yes  
Permitted: Yes  
Wet space: No  
Addition: No  
Conversion: No

### 3 Floor 2 - Hall



Dimensions: 5'11" x 4'0"  
Area: 23 sq. ft  
Counted as living area: Yes

Heated: Yes  
Finished: Yes  
Enclosed: Yes  
Contiguous: Yes  
Permitted: Yes  
Wet space: No  
Addition: No  
Conversion: No

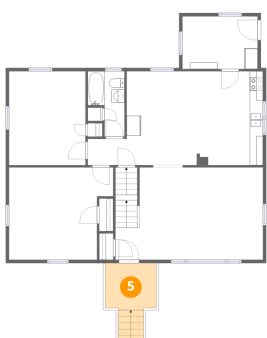
### 4 Floor 2 - Living Room



Dimensions: 22'4" x 13'11"  
Area: 309 sq. ft  
Counted as living area: Yes

Heated: Yes  
Finished: Yes  
Enclosed: Yes  
Contiguous: Yes  
Permitted: Yes  
Wet space: No  
Addition: No  
Conversion: No

### 5 Floor 2 - Porch



Dimensions: 7'9" x 7'1"  
Area: 72 sq. ft  
Counted as living area: No

Heated: No  
Finished: No  
Enclosed: No  
Contiguous: Yes  
Permitted: Yes  
Wet space: No  
Addition: No  
Conversion: No

21600 Patrick Henry Highway, Jetersville, Amelia County,  
Virginia, United States, 23083

**6** Floor 2 - Bath



Dimensions: 5'7" x 9'11"  
Area: 43 sq. ft  
Counted as living area: Yes

Heated: Yes  
Finished: Yes  
Enclosed: Yes  
Contiguous: Yes  
Permitted: Yes  
Wet space: Yes  
Addition: No  
Conversion: No

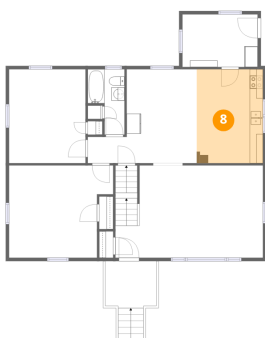
**7** Floor 2 - Dining Area



Dimensions: 10'7" x 14'2"  
Area: 150 sq. ft  
Counted as living area: Yes

Heated: Yes  
Finished: Yes  
Enclosed: Yes  
Contiguous: Yes  
Permitted: Yes  
Wet space: No  
Addition: No  
Conversion: No

**8** Floor 2 - Kitchen



Dimensions: 10'0" x 14'2"  
Area: 142 sq. ft  
Counted as living area: Yes

Heated: Yes  
Finished: Yes  
Enclosed: Yes  
Contiguous: Yes  
Permitted: Yes  
Wet space: No  
Addition: No  
Conversion: No

21600 Patrick Henry Highway, Jetersville, Amelia County,  
Virginia, United States, 23083

### 9 Floor 2 - Primary Bedroom



Dimensions: 15'9" x 13'11"  
Area: 196 sq. ft  
Counted as living area: Yes

Heated: Yes  
Finished: Yes  
Enclosed: Yes  
Contiguous: Yes  
Permitted: Yes  
Wet space: No  
Addition: No  
Conversion: No

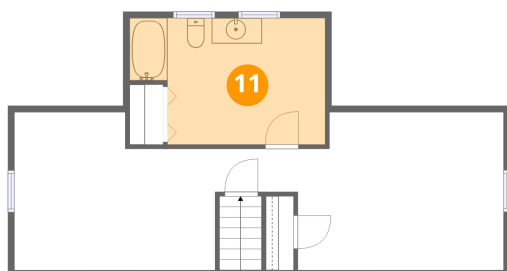
### 10 Floor 2 - Bedroom



Dimensions: 11'7" x 14'2"  
Area: 164 sq. ft  
Counted as living area: Yes

Heated: Yes  
Finished: Yes  
Enclosed: Yes  
Contiguous: Yes  
Permitted: Yes  
Wet space: No  
Addition: No  
Conversion: No

### 11 Floor 3 - Bath

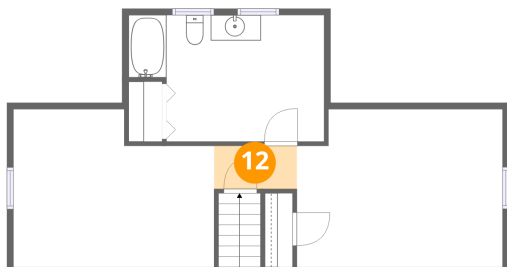


Dimensions: 15'4" x 9'11"  
Area: 137 sq. ft  
Counted as living area: Yes

Heated: Yes  
Finished: Yes  
Enclosed: Yes  
Contiguous: Yes  
Permitted: Yes  
Wet space: Yes  
Addition: No  
Conversion: No

21600 Patrick Henry Highway, Jetersville, Amelia County,  
Virginia, United States, 23083

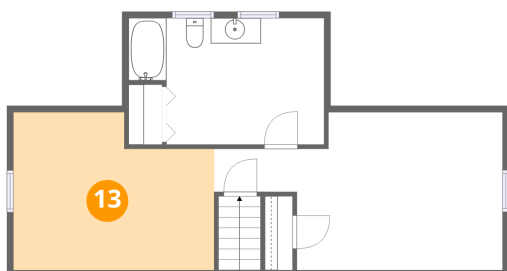
### 12 Floor 3 - Hall



Dimensions: 6'6" x 3'5"  
Area: 22 sq. ft  
Counted as living area: Yes

Heated: Yes  
Finished: Yes  
Enclosed: Yes  
Contiguous: Yes  
Permitted: Yes  
Wet space: No  
Addition: No  
Conversion: No

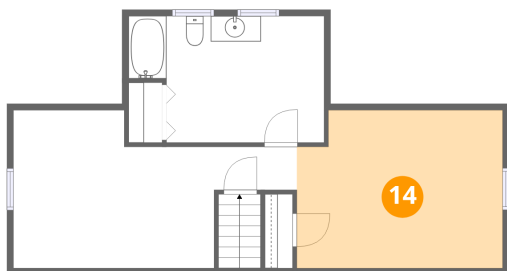
### 13 Floor 3 - Bedroom



Dimensions: 15'9" x 12'5"  
Area: 175 sq. ft  
Counted as living area: Yes

Heated: Yes  
Finished: Yes  
Enclosed: Yes  
Contiguous: Yes  
Permitted: Yes  
Wet space: No  
Addition: No  
Conversion: No

### 14 Floor 3 - Bedroom



Dimensions: 16'2" x 12'5"  
Area: 193 sq. ft  
Counted as living area: Yes

Heated: Yes  
Finished: Yes  
Enclosed: Yes  
Contiguous: Yes  
Permitted: Yes  
Wet space: No  
Addition: No  
Conversion: No