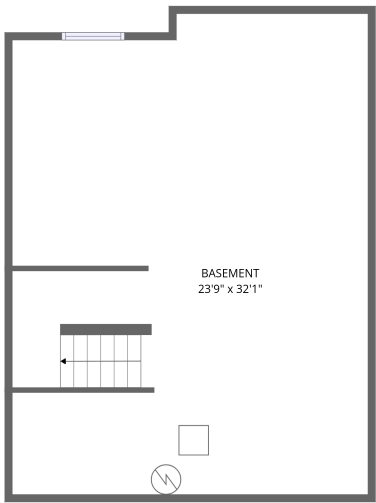
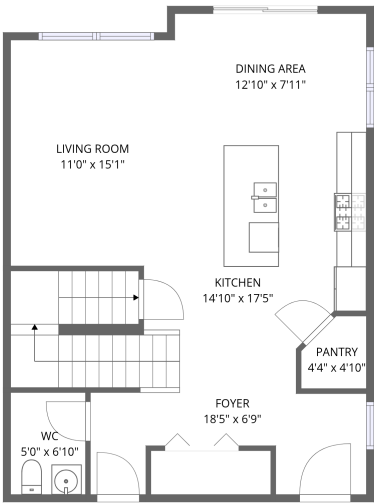


Home report

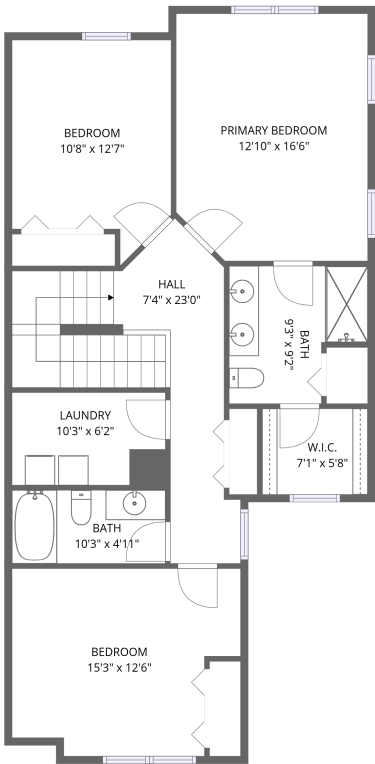
26543 Countryside Lane, Plainfield, Kendall County, Illinois,  
United States, 60585



FLOOR 1



FLOOR 2



FLOOR 3


**Total Area: 1752 sq. ft**

Below Ground: 0 sq. ft, Floor 2: 744 sq. ft, Floor 3: 1008 sq. ft

Excluded: Basement 744 sq. ft, Walls: 139 sq. ft

Property summary

 **3** Floors

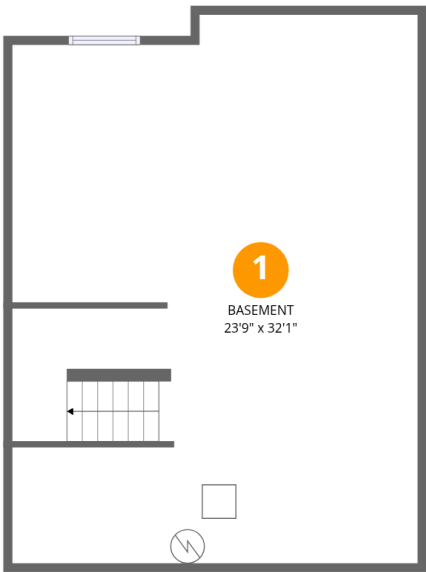
 **3** Bedrooms

 **2** Bathrooms

 **1** Half baths

Home report

26543 Countryside Lane, Plainfield, Kendall County, Illinois,  
United States, 60585



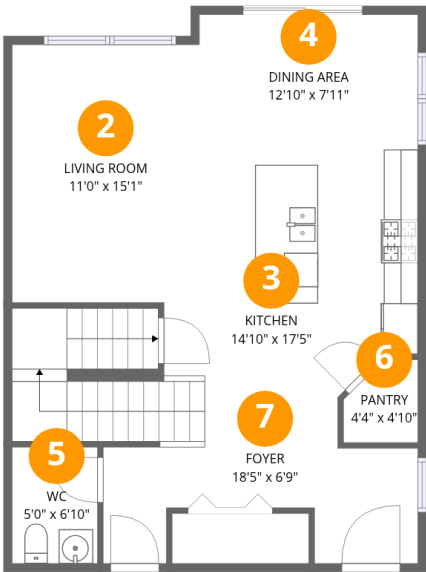
Room dimensions

Floor 1 Below ground Total:0sqft   Excluded: 744sqft

#		Max Dimensions	sqft	Included
1	Basement	23'9" x 32'1"	738 sq. ft	No

Home report

26543 Countryside Lane, Plainfield, Kendall County, Illinois,  
United States, 60585



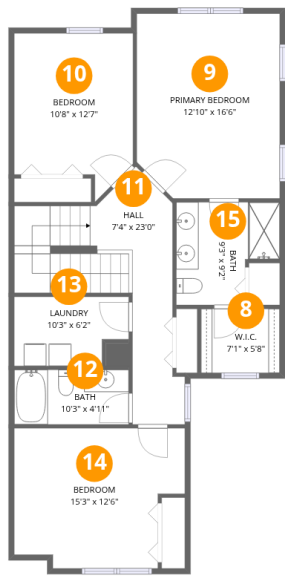
Room dimensions

Floor 2 Total:744sqft   Excluded: 0sqft

#		Max Dimensions	sqft	Included
2	Living Room	11'0" x 15'1"	165 sq. ft	Yes
3	Kitchen	14'10" x 17'5"	282 sq. ft	Yes
4	Dining Area	12'10" x 7'11"	101 sq. ft	Yes
5	WC	5'0" x 6'10"	34 sq. ft	Yes
6	Pantry	4'4" x 4'10"	18 sq. ft	Yes
7	Foyer	18'5" x 6'9"	97 sq. ft	Yes

Home report

26543 Countryside Lane, Plainfield, Kendall County, Illinois,  
United States, 60585



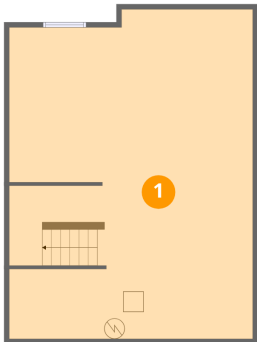
Room dimensions

Floor 3 Total:1008sqft Excluded: 0sqft

#		Max Dimensions	sqft	Included
8	W.I.C.	7'1" x 5'8"	40 sq. ft	Yes
9	Primary Bedroom	12'10" x 16'6"	206 sq. ft	Yes
10	Bedroom	10'8" x 12'7"	137 sq. ft	Yes
11	Hall	7'4" x 23'0"	170 sq. ft	Yes
12	Bath	10'3" x 4'11"	50 sq. ft	Yes
13	Laundry	10'3" x 6'2"	58 sq. ft	Yes
14	Bedroom	15'3" x 12'6"	171 sq. ft	Yes
15	Bath	9'3" x 9'2"	72 sq. ft	Yes

26543 Countryside Lane, Plainfield, Kendall County, Illinois,  
United States, 60585

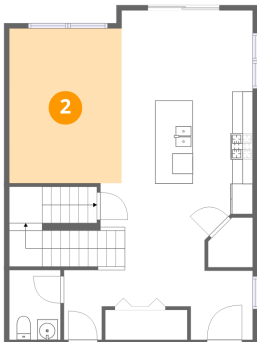
1 Floor 1 - Basement



Max Dimensions: 23'9" x 32'1"  
Calculated Area: 738 sq. ft  
Included: No

Heated: Yes  
Finished: No  
Enclosed: Yes  
Contiguous: Yes  
Permitted: Yes  
Wet space: No  
Addition: No  
Conversion: No

2 Floor 2 - Living Room

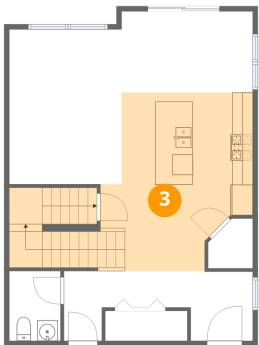


Max Dimensions: 11'0" x 15'1"  
Calculated Area: 165 sq. ft  
Included: Yes

Heated: Yes  
Finished: Yes  
Enclosed: Yes  
Contiguous: Yes  
Permitted: Yes  
Wet space: No  
Addition: No  
Conversion: No

26543 Countryside Lane, Plainfield, Kendall County, Illinois,  
United States, 60585

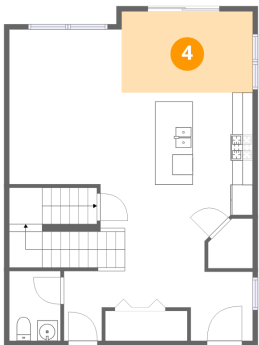
3 Floor 2 - Kitchen



Max Dimensions: 14'10" x 17'5"  
Calculated Area: 282 sq. ft  
Included: Yes

Heated: Yes  
Finished: Yes  
Enclosed: Yes  
Contiguous: Yes  
Permitted: Yes  
Wet space: No  
Addition: No  
Conversion: No

4 Floor 2 - Dining Area



Max Dimensions: 12'10" x 7'11"  
Calculated Area: 101 sq. ft  
Included: Yes

Heated: Yes  
Finished: Yes  
Enclosed: Yes  
Contiguous: Yes  
Permitted: Yes  
Wet space: No  
Addition: No  
Conversion: No

5 Floor 2 - WC

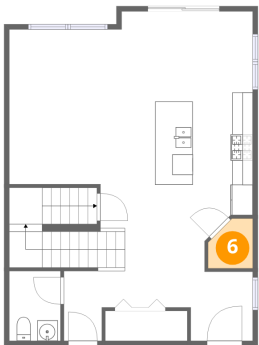


Max Dimensions: 5'0" x 6'10"  
Calculated Area: 34 sq. ft  
Included: Yes

Heated: Yes  
Finished: Yes  
Enclosed: Yes  
Contiguous: Yes  
Permitted: Yes  
Wet space: Yes  
Addition: No  
Conversion: No

26543 Countryside Lane, Plainfield, Kendall County, Illinois,  
United States, 60585

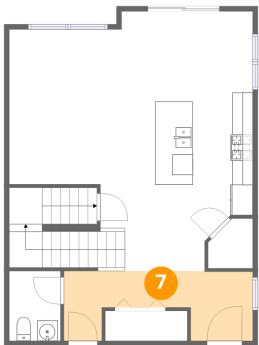
6 Floor 2 - Pantry



Max Dimensions: 4'4" x 4'10"  
Calculated Area: 18 sq. ft  
Included: Yes

Heated: Yes  
Finished: Yes  
Enclosed: Yes  
Contiguous: Yes  
Permitted: Yes  
Wet space: No  
Addition: No  
Conversion: No

7 Floor 2 - Foyer



Max Dimensions: 18'5" x 6'9"  
Calculated Area: 97 sq. ft  
Included: Yes

Heated: Yes  
Finished: Yes  
Enclosed: Yes  
Contiguous: Yes  
Permitted: Yes  
Wet space: No  
Addition: No  
Conversion: No

8 Floor 3 - W.I.C.



Max Dimensions: 7'1" x 5'8"  
Calculated Area: 40 sq. ft  
Included: Yes

Heated: Yes  
Finished: Yes  
Enclosed: Yes  
Contiguous: Yes  
Permitted: Yes  
Wet space: No  
Addition: No  
Conversion: No

26543 Countryside Lane, Plainfield, Kendall County, Illinois,  
United States, 60585

9 Floor 3 - Primary Bedroom



Max Dimensions: 12'10" x 16'6"  
Calculated Area: 206 sq. ft  
Included: Yes

Heated: Yes  
Finished: Yes  
Enclosed: Yes  
Contiguous: Yes  
Permitted: Yes  
Wet space: No  
Addition: No  
Conversion: No

10 Floor 3 - Bedroom



Max Dimensions: 10'8" x 12'7"  
Calculated Area: 137 sq. ft  
Included: Yes

Heated: Yes  
Finished: Yes  
Enclosed: Yes  
Contiguous: Yes  
Permitted: Yes  
Wet space: No  
Addition: No  
Conversion: No

11 Floor 3 - Hall



Max Dimensions: 7'4" x 23'0"  
Calculated Area: 170 sq. ft  
Included: Yes

Heated: Yes  
Finished: Yes  
Enclosed: Yes  
Contiguous: Yes  
Permitted: Yes  
Wet space: No  
Addition: No  
Conversion: No

26543 Countryside Lane, Plainfield, Kendall County, Illinois,  
United States, 60585

12 Floor 3 - Bath



Max Dimensions: 10'3" x 4'11"  
Calculated Area: 50 sq. ft  
Included: Yes

Heated: Yes  
Finished: Yes  
Enclosed: Yes  
Contiguous: Yes  
Permitted: Yes  
Wet space: Yes  
Addition: No  
Conversion: No

13 Floor 3 - Laundry



Max Dimensions: 10'3" x 6'2"  
Calculated Area: 58 sq. ft  
Included: Yes

Heated: Yes  
Finished: Yes  
Enclosed: Yes  
Contiguous: Yes  
Permitted: Yes  
Wet space: No  
Addition: No  
Conversion: No

14 Floor 3 - Bedroom



Max Dimensions: 15'3" x 12'6"  
Calculated Area: 171 sq. ft  
Included: Yes

Heated: Yes  
Finished: Yes  
Enclosed: Yes  
Contiguous: Yes  
Permitted: Yes  
Wet space: No  
Addition: No  
Conversion: No

26543 Countryside Lane, Plainfield, Kendall County, Illinois,  
United States, 60585

**15** Floor 3 - Bath



Max Dimensions: 9'3" x 9'2"  
Calculated Area: 72 sq. ft  
Included: Yes

Heated: Yes  
Finished: Yes  
Enclosed: Yes  
Contiguous: Yes  
Permitted: Yes  
Wet space: Yes  
Addition: No  
Conversion: No