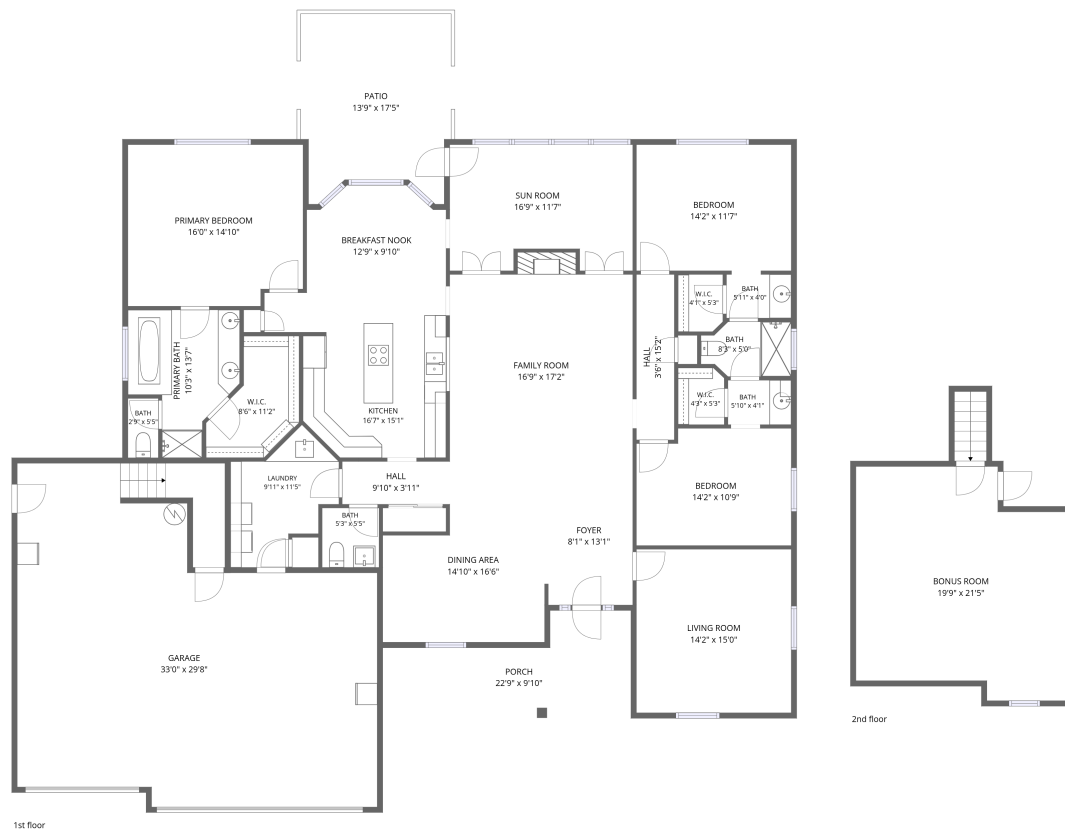


# Home data report

## 2496 Turf Way, Shelbyville, IN, US



**Total Area: 2910 sq. ft**

1st Floor: 2515 sq. ft, 2nd Floor: 395 sq. ft

Excluded: Garage 867 sq. ft, Porch 171 sq. ft, Patio 214 sq. ft, Walls: 225 sq. ft

### Property summary

 **2** Floors

 **3** Bedrooms

 **2** Bathrooms

Home data report

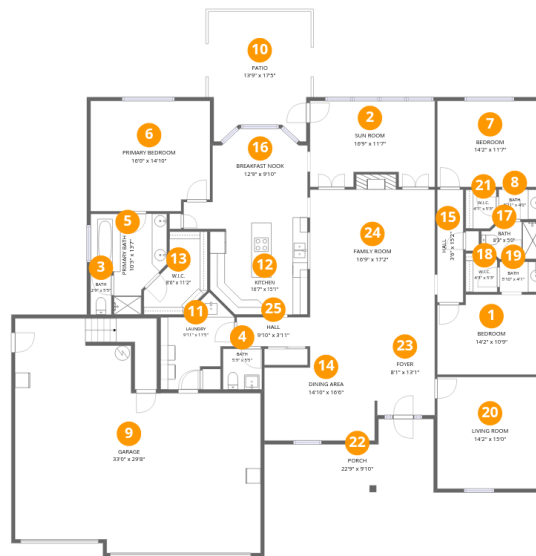
**2496 Turf Way, Shelbyville, IN, US**

 **1**  
Half baths

 **1**  
Garages

# Home data report

## 2496 Turf Way, Shelbyville, IN, US



### Room dimensions

Floor 1

Total: 2515 sqft

Excluded: 1252 sqft

#		Dimensions	sqft	Counted as living area
1	Bedroom	14'2" x 10'9"	147 sq. ft	Yes
2	Sun Room	16'9" x 11'7"	181 sq. ft	Yes
3	Bath	2'9" x 5'5"	15 sq. ft	Yes
4	Bath	5'3" x 5'5"	28 sq. ft	Yes
5	Primary Bath	10'3" x 13'7"	104 sq. ft	Yes
6	Primary Bedroom	16'0" x 14'10"	231 sq. ft	Yes
7	Bedroom	14'2" x 11'7"	164 sq. ft	Yes
8	Bath	5'11" x 4'0"	24 sq. ft	Yes
9	Garage	33'0" x 29'8"	867 sq. ft	No
10	Patio	13'9" x 17'5"	214 sq. ft	No
11	Laundry	9'11" x 11'5"	89 sq. ft	Yes

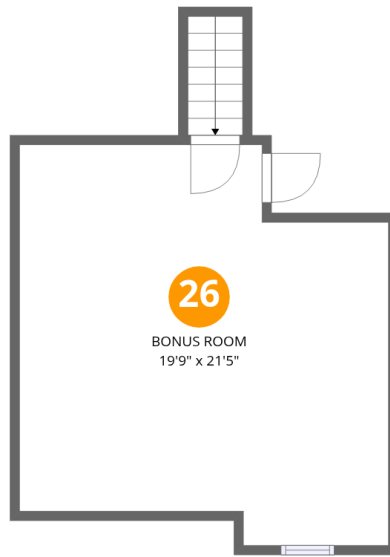
# Home data report

## 2496 Turf Way,Shelbyville,IN,US

#		Dimensions	sqft	Counted as living area
12	Kitchen	16'7" x 15'1"	206 sq. ft	Yes
13	W.I.C.	8'6" x 11'2"	69 sq. ft	Yes
14	Dining Area	14'10" x 16'6"	203 sq. ft	Yes
15	Hall	3'6" x 15'2"	53 sq. ft	Yes
16	Breakfast Nook	12'9" x 9'10"	115 sq. ft	Yes
17	Bath	8'3" x 5'0"	37 sq. ft	Yes
18	W.I.C.	4'3" x 5'3"	22 sq. ft	Yes
19	Bath	5'10" x 4'1"	24 sq. ft	Yes
20	Living Room	14'2" x 15'0"	212 sq. ft	Yes
21	W.I.C.	4'1" x 5'3"	21 sq. ft	Yes
22	Porch	22'9" x 9'10"	171 sq. ft	No
23	Foyer	8'1" x 13'1"	105 sq. ft	Yes
24	Family Room	16'9" x 17'2"	299 sq. ft	Yes
25	Hall	9'10" x 3'11"	39 sq. ft	Yes

Home data report

2496 Turf Way,Shelbyville,IN,US



## Room dimensions

Floor 2

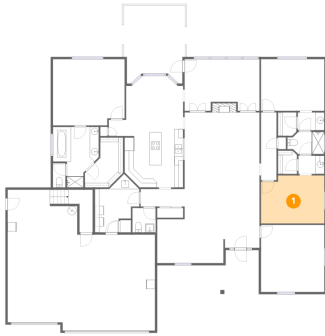
Total:395sqft

Excluded: 0sqft

#		Dimensions	sqft	Counted as living area
26	Bonus Room	19'9" x 21'5"	374 sq. ft	Yes

## 1 Floor 1 - Bedroom

---

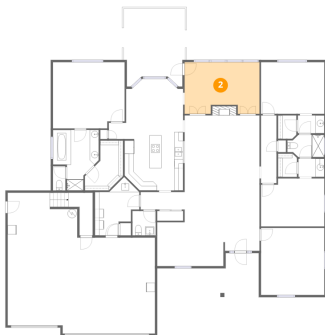


Dimensions: 14'2" x 10'9"  
Area: 147 sq. ft  
Counted as living area: Yes

Heated: Yes  
Finished: Yes  
Enclosed: Yes  
Contiguous: Yes  
Permitted: Yes  
Wet space: No  
Addition: No  
Conversion: No

## 2 Floor 1 - Sun Room

---



Dimensions: 16'9" x 11'7"  
Area: 181 sq. ft  
Counted as living area: Yes

Heated: Yes  
Finished: Yes  
Enclosed: Yes  
Contiguous: Yes  
Permitted: Yes  
Wet space: No  
Addition: No  
Conversion: No

### 3 Floor 1 - Bath



Dimensions: 2'9" x 5'5"  
Area: 15 sq. ft  
Counted as living area: Yes

Heated: Yes  
Finished: Yes  
Enclosed: Yes  
Contiguous: Yes  
Permitted: Yes  
Wet space: Yes  
Addition: No  
Conversion: No

### 4 Floor 1 - Bath



Dimensions: 5'3" x 5'5"  
Area: 28 sq. ft  
Counted as living area: Yes

Heated: Yes  
Finished: Yes  
Enclosed: Yes  
Contiguous: Yes  
Permitted: Yes  
Wet space: Yes  
Addition: No  
Conversion: No

### 5 Floor 1 - Primary Bath



Dimensions: 10'3" x 13'7"  
Area: 104 sq. ft  
Counted as living area: Yes

Heated: Yes  
Finished: Yes  
Enclosed: Yes  
Contiguous: Yes  
Permitted: Yes  
Wet space: Yes  
Addition: No  
Conversion: No

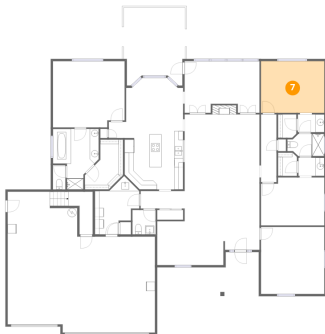
## 6 Floor 1 - Primary Bedroom



Dimensions: 16'0" x 14'10"  
Area: 231 sq. ft  
Counted as living area: Yes

Heated: Yes  
Finished: Yes  
Enclosed: Yes  
Contiguous: Yes  
Permitted: Yes  
Wet space: No  
Addition: No  
Conversion: No

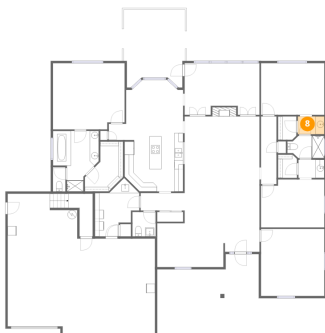
## 7 Floor 1 - Bedroom



Dimensions: 14'2" x 11'7"  
Area: 164 sq. ft  
Counted as living area: Yes

Heated: Yes  
Finished: Yes  
Enclosed: Yes  
Contiguous: Yes  
Permitted: Yes  
Wet space: No  
Addition: No  
Conversion: No

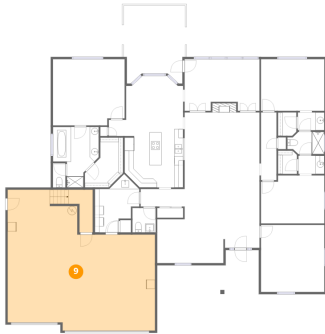
## 8 Floor 1 - Bath



Dimensions: 5'11" x 4'0"  
Area: 24 sq. ft  
Counted as living area: Yes

Heated: Yes  
Finished: Yes  
Enclosed: Yes  
Contiguous: Yes  
Permitted: Yes  
Wet space: Yes  
Addition: No  
Conversion: No

## 9 Floor 1 - Garage



Dimensions: 33'0" x 29'8"  
Area: 867 sq. ft  
Counted as living area: No

Heated: No  
Finished: No  
Enclosed: Yes  
Contiguous: Yes  
Permitted: Yes  
Wet space: No  
Addition: No  
Conversion: No

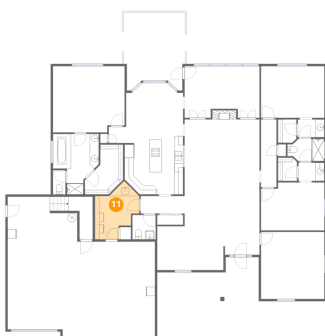
## 10 Floor 1 - Patio



Dimensions: 13'9" x 17'5"  
Area: 214 sq. ft  
Counted as living area: No

Heated: No  
Finished: No  
Enclosed: No  
Contiguous: Yes  
Permitted: Yes  
Wet space: No  
Addition: No  
Conversion: No

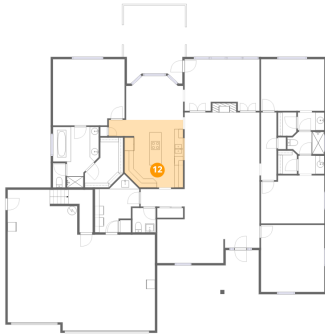
## 11 Floor 1 - Laundry



Dimensions: 9'11" x 11'5"  
Area: 89 sq. ft  
Counted as living area: Yes

Heated: Yes  
Finished: Yes  
Enclosed: Yes  
Contiguous: Yes  
Permitted: Yes  
Wet space: No  
Addition: No  
Conversion: No

## 12 Floor 1 - Kitchen



Dimensions: 16'7" x 15'1"  
Area: 206 sq. ft  
Counted as living area: Yes

Heated: Yes  
Finished: Yes  
Enclosed: Yes  
Contiguous: Yes  
Permitted: Yes  
Wet space: No  
Addition: No  
Conversion: No

## 13 Floor 1 - W.I.C.



Dimensions: 8'6" x 11'2"  
Area: 69 sq. ft  
Counted as living area: Yes

Heated: Yes  
Finished: Yes  
Enclosed: Yes  
Contiguous: Yes  
Permitted: Yes  
Wet space: No  
Addition: No  
Conversion: No

## 14 Floor 1 - Dining Area



Dimensions: 14'10" x 16'6"  
Area: 203 sq. ft  
Counted as living area: Yes

Heated: Yes  
Finished: Yes  
Enclosed: Yes  
Contiguous: Yes  
Permitted: Yes  
Wet space: No  
Addition: No  
Conversion: No

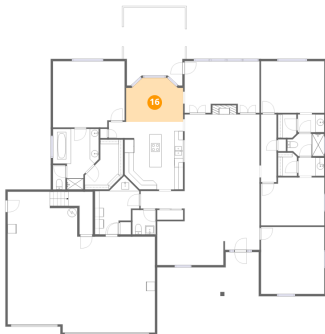
### 15 Floor 1 - Hall



Dimensions: 3'6" x 15'2"  
Area: 53 sq. ft  
Counted as living area: Yes

Heated: Yes  
Finished: Yes  
Enclosed: Yes  
Contiguous: Yes  
Permitted: Yes  
Wet space: No  
Addition: No  
Conversion: No

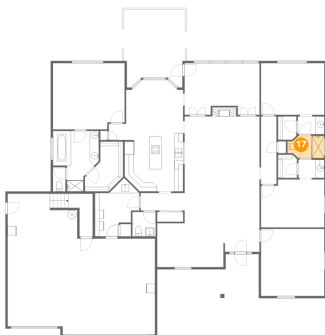
### 16 Floor 1 - Breakfast Nook



Dimensions: 12'9" x 9'10"  
Area: 115 sq. ft  
Counted as living area: Yes

Heated: Yes  
Finished: Yes  
Enclosed: Yes  
Contiguous: Yes  
Permitted: Yes  
Wet space: No  
Addition: No  
Conversion: No

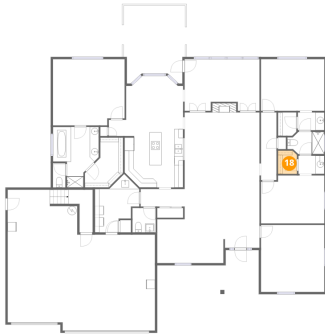
### 17 Floor 1 - Bath



Dimensions: 8'3" x 5'0"  
Area: 37 sq. ft  
Counted as living area: Yes

Heated: Yes  
Finished: Yes  
Enclosed: Yes  
Contiguous: Yes  
Permitted: Yes  
Wet space: Yes  
Addition: No  
Conversion: No

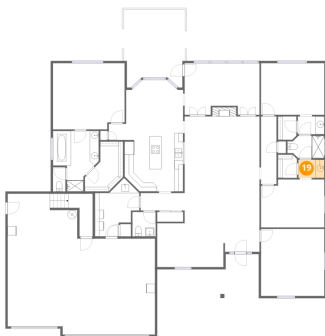
**18** Floor 1 - W.I.C.



Dimensions: 4'3" x 5'3"  
Area: 22 sq. ft  
Counted as living area: Yes

Heated: Yes  
Finished: Yes  
Enclosed: Yes  
Contiguous: Yes  
Permitted: Yes  
Wet space: No  
Addition: No  
Conversion: No

**19** Floor 1 - Bath



Dimensions: 5'10" x 4'1"  
Area: 24 sq. ft  
Counted as living area: Yes

Heated: Yes  
Finished: Yes  
Enclosed: Yes  
Contiguous: Yes  
Permitted: Yes  
Wet space: Yes  
Addition: No  
Conversion: No

**20** Floor 1 - Living Room



Dimensions: 14'2" x 15'0"  
Area: 212 sq. ft  
Counted as living area: Yes

Heated: Yes  
Finished: Yes  
Enclosed: Yes  
Contiguous: Yes  
Permitted: Yes  
Wet space: No  
Addition: No  
Conversion: No

**21** Floor 1 - W.I.C.

---

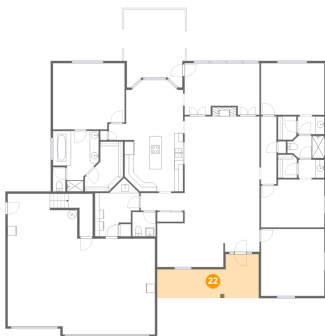


Dimensions: 4'1" x 5'3"  
Area: 21 sq. ft  
Counted as living area: Yes

Heated: Yes  
Finished: Yes  
Enclosed: Yes  
Contiguous: Yes  
Permitted: Yes  
Wet space: No  
Addition: No  
Conversion: No

**22** Floor 1 - Porch

---

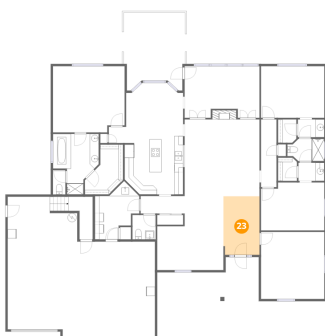


Dimensions: 22'9" x 9'10"  
Area: 171 sq. ft  
Counted as living area: No

Heated: No  
Finished: No  
Enclosed: No  
Contiguous: Yes  
Permitted: Yes  
Wet space: No  
Addition: No  
Conversion: No

**23** Floor 1 - Foyer

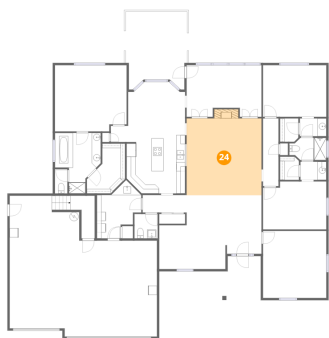
---



Dimensions: 8'1" x 13'1"  
Area: 105 sq. ft  
Counted as living area: Yes

Heated: Yes  
Finished: Yes  
Enclosed: Yes  
Contiguous: Yes  
Permitted: Yes  
Wet space: No  
Addition: No  
Conversion: No

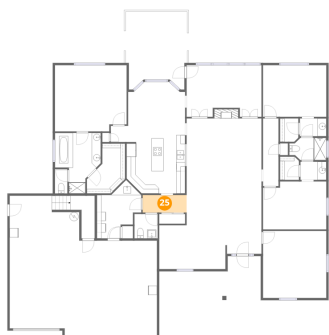
### 24 Floor 1 - Family Room



Dimensions: 16'9" x 17'2"  
Area: 299 sq. ft  
Counted as living area: Yes

Heated: Yes  
Finished: Yes  
Enclosed: Yes  
Contiguous: Yes  
Permitted: Yes  
Wet space: No  
Addition: No  
Conversion: No

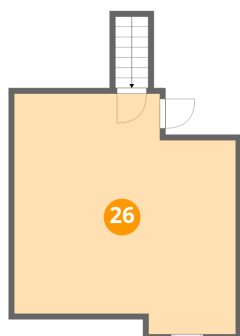
### 25 Floor 1 - Hall



Dimensions: 9'10" x 3'11"  
Area: 39 sq. ft  
Counted as living area: Yes

Heated: Yes  
Finished: Yes  
Enclosed: Yes  
Contiguous: Yes  
Permitted: Yes  
Wet space: No  
Addition: No  
Conversion: No

### 26 Floor 2 - Bonus Room



Dimensions: 19'9" x 21'5"  
Area: 374 sq. ft  
Counted as living area: Yes

Heated: Yes  
Finished: Yes  
Enclosed: Yes  
Contiguous: Yes  
Permitted: Yes  
Wet space: No  
Addition: No  
Conversion: No