

Home data report

6979 Pine Needle Drive, Boones Mill, Roanoke County, Virginia,
United States, 24065



Total Area: 2396 sq. ft

1st Floor: 642 sq. ft, 2nd Floor: 890 sq. ft, 3rd Floor: 864 sq. ft

Excluded: Undefined 27 sq. ft, Patio 115 sq. ft, Storage 197 sq. ft, Porch 44 sq. ft, Deck 100 sq. ft, Garage 458 sq. ft, Fireplace 13 sq. ft, Walls: 215 sq. ft

Property summary

 **3** Floors

 **4** Bedrooms

 **3** Bathrooms

Home data report

**6979 Pine Needle Drive, Boones Mill, Roanoke County, Virginia,
United States, 24065**



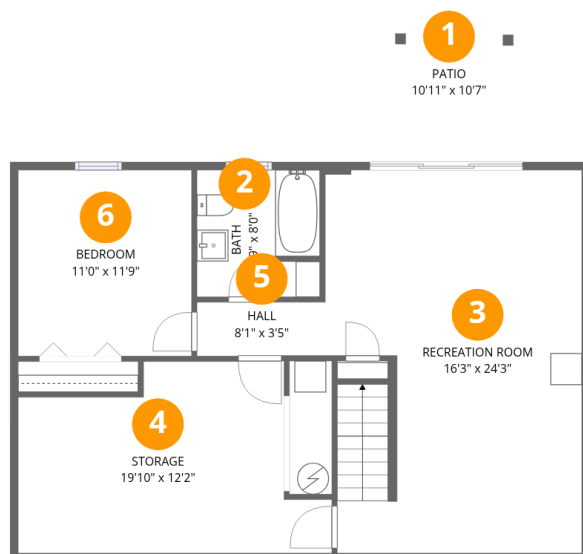
1
Half baths



1
Garages

Home data report

6979 Pine Needle Drive, Boones Mill, Roanoke County, Virginia, United States, 24065



Room dimensions

Floor 1

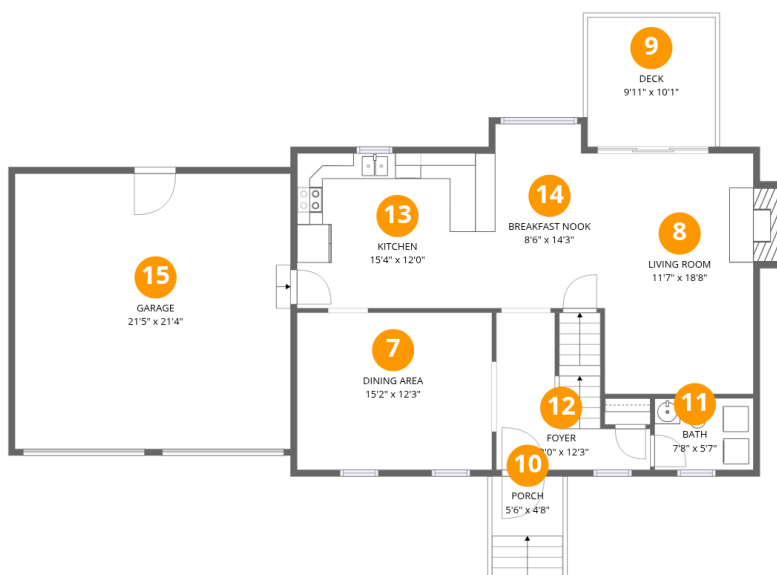
Total:642sqft

Excluded: 339sqft

#		Dimensions	sqft	Counted as living area
1	Patio	10'11" x 10'7"	115 sq. ft	No
2	Bath	7'9" x 8'0"	63 sq. ft	Yes
3	Recreation Room	16'3" x 24'3"	393 sq. ft	Yes
4	Storage	19'10" x 12'2"	242 sq. ft	No
5	Hall	8'1" x 3'5"	28 sq. ft	Yes
6	Bedroom	11'0" x 11'9"	129 sq. ft	Yes

Home data report

6979 Pine Needle Drive, Boones Mill, Roanoke County, Virginia, United States, 24065



Room dimensions

Floor 2

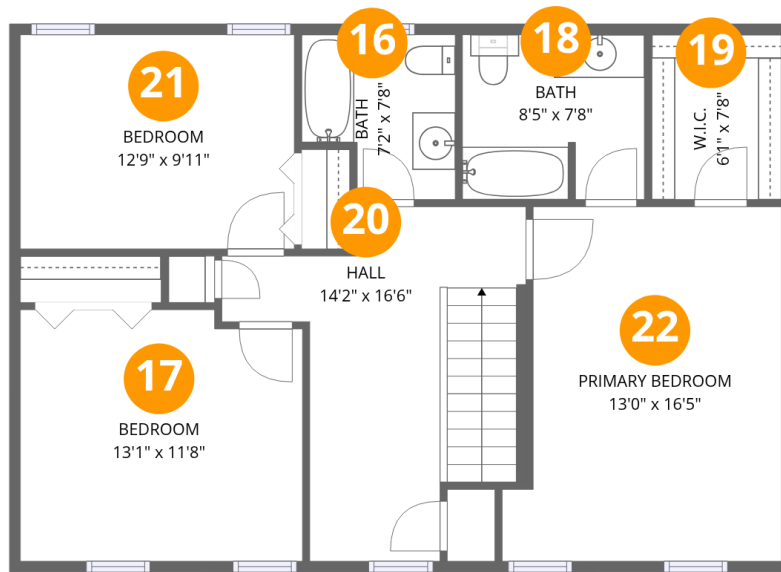
Total:890sqft

Excluded: 615sqft

#		Dimensions	sqft	Counted as living area
7	Dining Area	15'2" x 12'3"	185 sq. ft	Yes
8	Living Room	11'7" x 18'8"	216 sq. ft	Yes
9	Deck	9'11" x 10'1"	100 sq. ft	No
10	Porch	5'6" x 4'8"	25 sq. ft	No
11	Bath	7'8" x 5'7"	43 sq. ft	Yes
12	Foyer	12'0" x 12'3"	146 sq. ft	Yes
13	Kitchen	15'4" x 12'0"	184 sq. ft	Yes
14	Breakfast Nook	8'6" x 14'3"	121 sq. ft	Yes
15	Garage	21'5" x 21'4"	457 sq. ft	No

Home data report

6979 Pine Needle Drive, Boones Mill, Roanoke County, Virginia,
United States, 24065



Room dimensions

Floor 3

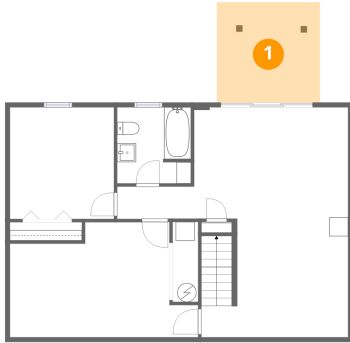
Total:864sqft

Excluded: 0sqft

#		Dimensions	sqft	Counted as living area
16	Bath	7'2" x 7'8"	55 sq. ft	Yes
17	Bedroom	13'1" x 11'8"	153 sq. ft	Yes
18	Bath	8'5" x 7'8"	65 sq. ft	Yes
19	W.I.C.	6'1" x 7'8"	46 sq. ft	Yes
20	Hall	14'2" x 16'6"	232 sq. ft	Yes
21	Bedroom	12'9" x 9'11"	127 sq. ft	Yes
22	Primary Bedroom	13'0" x 16'5"	213 sq. ft	Yes

6979 Pine Needle Drive, Boones Mill, Roanoke County, Virginia,
United States, 24065

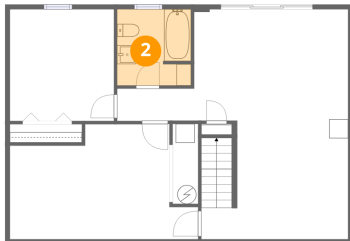
1 Floor 1 - Patio



Dimensions: 10'11" x 10'7"
Area: 115 sq. ft
Counted as living area: No

Heated: No
Finished: No
Enclosed: No
Contiguous: Yes
Permitted: Yes
Wet space: No
Addition: No
Conversion: No

2 Floor 1 - Bath

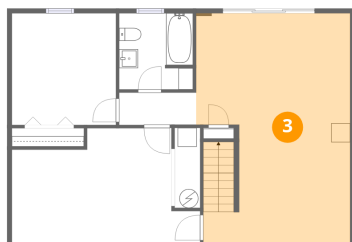


Dimensions: 7'9" x 8'0"
Area: 63 sq. ft
Counted as living area: Yes

Heated: Yes
Finished: Yes
Enclosed: Yes
Contiguous: Yes
Permitted: Yes
Wet space: Yes
Addition: No
Conversion: No

6979 Pine Needle Drive, Boones Mill, Roanoke County, Virginia, United States, 24065

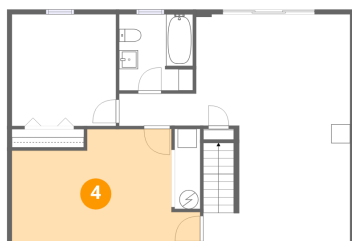
3 Floor 1 - Recreation Room



Dimensions: 16'3" x 24'3"
Area: 393 sq. ft
Counted as living area: Yes

Heated: Yes
Finished: Yes
Enclosed: Yes
Contiguous: Yes
Permitted: Yes
Wet space: No
Addition: No
Conversion: No

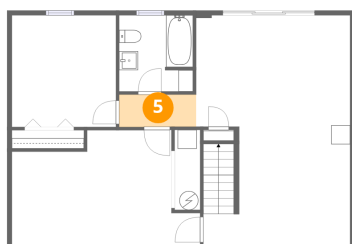
4 Floor 1 - Storage



Dimensions: 19'10" x 12'2"
Area: 242 sq. ft
Counted as living area: No

Heated: No
Finished: No
Enclosed: No
Contiguous: Yes
Permitted: Yes
Wet space: No
Addition: No
Conversion: No

5 Floor 1 - Hall

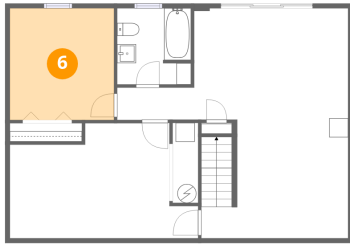


Dimensions: 8'1" x 3'5"
Area: 28 sq. ft
Counted as living area: Yes

Heated: Yes
Finished: Yes
Enclosed: Yes
Contiguous: Yes
Permitted: Yes
Wet space: No
Addition: No
Conversion: No

6979 Pine Needle Drive, Boones Mill, Roanoke County, Virginia,
United States, 24065

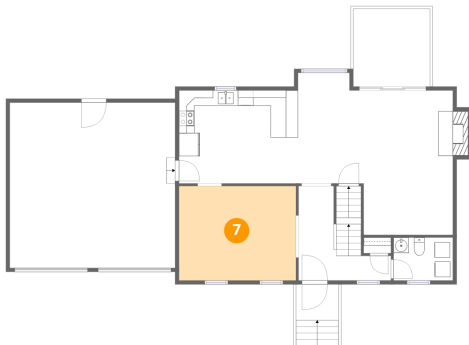
6 Floor 1 - Bedroom



Dimensions: 11'0" x 11'9"
Area: 129 sq. ft
Counted as living area: Yes

Heated: Yes
Finished: Yes
Enclosed: Yes
Contiguous: Yes
Permitted: Yes
Wet space: No
Addition: No
Conversion: No

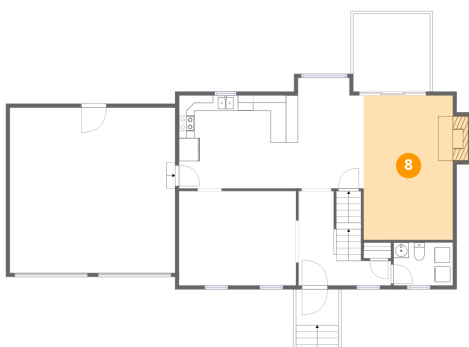
7 Floor 2 - Dining Area



Dimensions: 15'2" x 12'3"
Area: 185 sq. ft
Counted as living area: Yes

Heated: Yes
Finished: Yes
Enclosed: Yes
Contiguous: Yes
Permitted: Yes
Wet space: No
Addition: No
Conversion: No

8 Floor 2 - Living Room

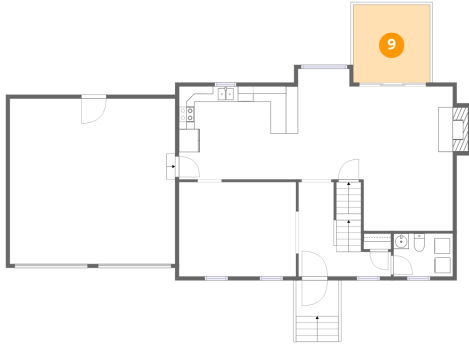


Dimensions: 11'7" x 18'8"
Area: 216 sq. ft
Counted as living area: Yes

Heated: Yes
Finished: Yes
Enclosed: Yes
Contiguous: Yes
Permitted: Yes
Wet space: No
Addition: No
Conversion: No

6979 Pine Needle Drive, Boones Mill, Roanoke County, Virginia,
United States, 24065

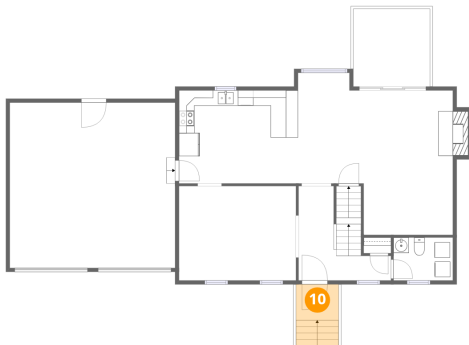
9 Floor 2 - Deck



Dimensions: 9'11" x 10'1"
Area: 100 sq. ft
Counted as living area: No

Heated: No
Finished: No
Enclosed: No
Contiguous: No
Permitted: Yes
Wet space: No
Addition: No
Conversion: No

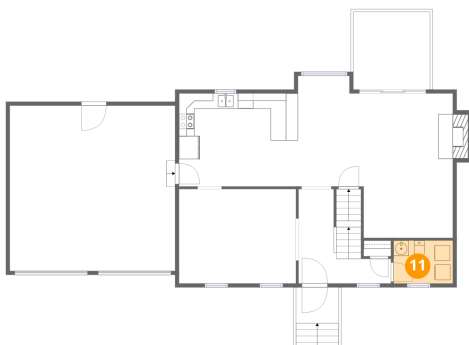
10 Floor 2 - Porch



Dimensions: 5'6" x 4'8"
Area: 25 sq. ft
Counted as living area: No

Heated: No
Finished: No
Enclosed: No
Contiguous: Yes
Permitted: Yes
Wet space: No
Addition: No
Conversion: No

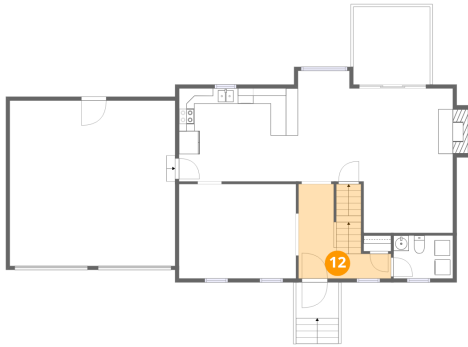
11 Floor 2 - Bath



Dimensions: 7'8" x 5'7"
Area: 43 sq. ft
Counted as living area: Yes

Heated: Yes
Finished: Yes
Enclosed: Yes
Contiguous: Yes
Permitted: Yes
Wet space: Yes
Addition: No
Conversion: No

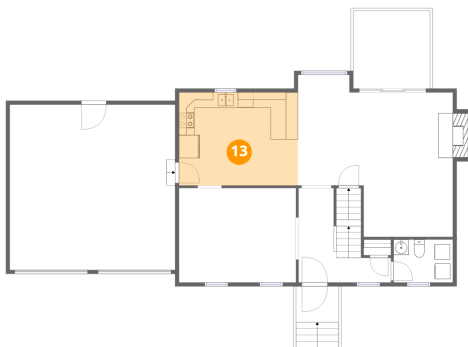
12 Floor 2 - Foyer



Dimensions: 12'0" x 12'3"
Area: 146 sq. ft
Counted as living area: Yes

Heated: Yes
Finished: Yes
Enclosed: Yes
Contiguous: Yes
Permitted: Yes
Wet space: No
Addition: No
Conversion: No

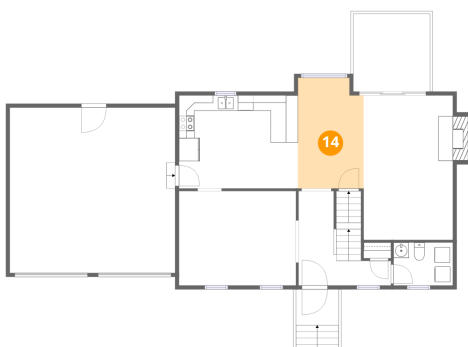
13 Floor 2 - Kitchen



Dimensions: 15'4" x 12'0"
Area: 184 sq. ft
Counted as living area: Yes

Heated: Yes
Finished: Yes
Enclosed: Yes
Contiguous: Yes
Permitted: Yes
Wet space: No
Addition: No
Conversion: No

14 Floor 2 - Breakfast Nook

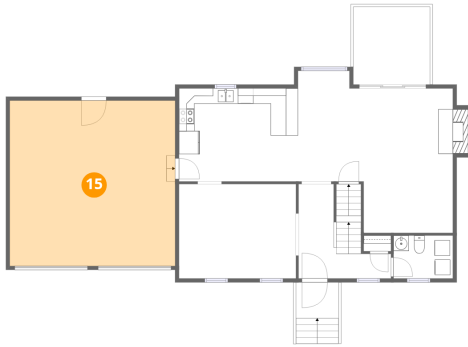


Dimensions: 8'6" x 14'3"
Area: 121 sq. ft
Counted as living area: Yes

Heated: Yes
Finished: Yes
Enclosed: Yes
Contiguous: Yes
Permitted: Yes
Wet space: No
Addition: No
Conversion: No

6979 Pine Needle Drive, Boones Mill, Roanoke County, Virginia,
United States, 24065

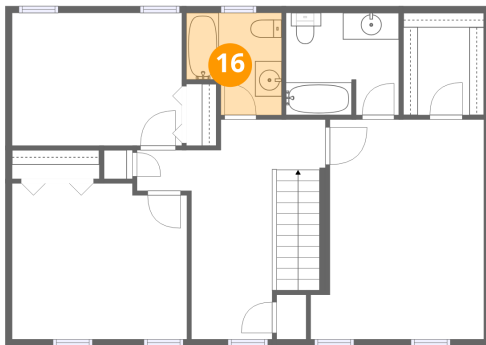
15 Floor 2 - Garage



Dimensions: 21'5" x 21'4"
Area: 457 sq. ft
Counted as living area: No

Heated: No
Finished: No
Enclosed: Yes
Contiguous: Yes
Permitted: Yes
Wet space: No
Addition: No
Conversion: No

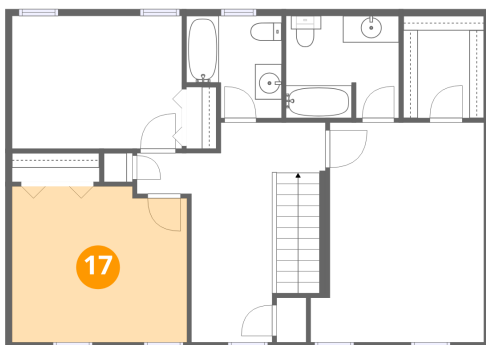
16 Floor 3 - Bath



Dimensions: 7'2" x 7'8"
Area: 55 sq. ft
Counted as living area: Yes

Heated: Yes
Finished: Yes
Enclosed: Yes
Contiguous: Yes
Permitted: Yes
Wet space: Yes
Addition: No
Conversion: No

17 Floor 3 - Bedroom

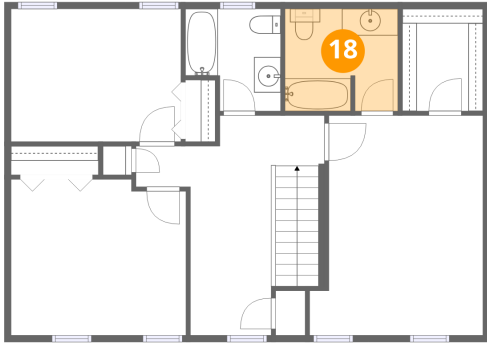


Dimensions: 13'1" x 11'8"
Area: 153 sq. ft
Counted as living area: Yes

Heated: Yes
Finished: Yes
Enclosed: Yes
Contiguous: Yes
Permitted: Yes
Wet space: No
Addition: No
Conversion: No

6979 Pine Needle Drive, Boones Mill, Roanoke County, Virginia,
United States, 24065

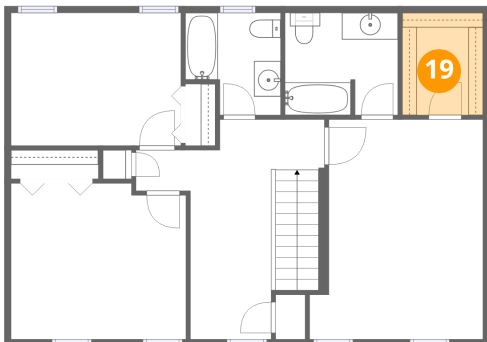
18 Floor 3 - Bath



Dimensions: 8'5" x 7'8"
Area: 65 sq. ft
Counted as living area: Yes

Heated: Yes
Finished: Yes
Enclosed: Yes
Contiguous: Yes
Permitted: Yes
Wet space: Yes
Addition: No
Conversion: No

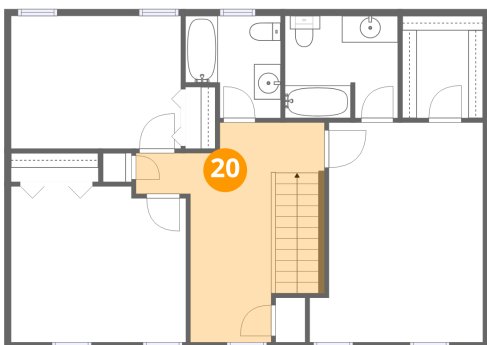
19 Floor 3 - W.I.C.



Dimensions: 6'1" x 7'8"
Area: 46 sq. ft
Counted as living area: Yes

Heated: Yes
Finished: Yes
Enclosed: Yes
Contiguous: Yes
Permitted: Yes
Wet space: No
Addition: No
Conversion: No

20 Floor 3 - Hall

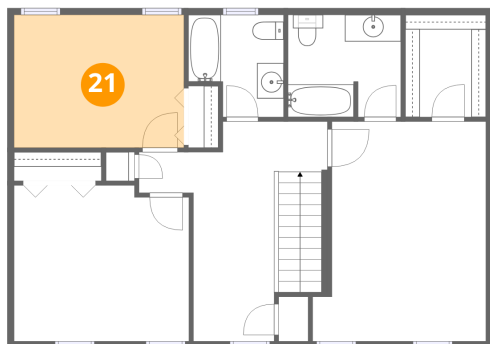


Dimensions: 14'2" x 16'6"
Area: 232 sq. ft
Counted as living area: Yes

Heated: Yes
Finished: Yes
Enclosed: Yes
Contiguous: Yes
Permitted: Yes
Wet space: No
Addition: No
Conversion: No

6979 Pine Needle Drive, Boones Mill, Roanoke County, Virginia,
United States, 24065

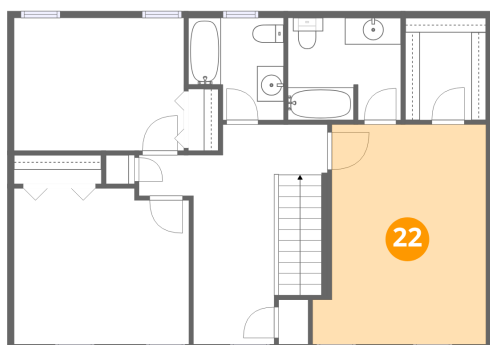
21 Floor 3 - Bedroom



Dimensions: 12'9" x 9'11"
Area: 127 sq. ft
Counted as living area: Yes

Heated: Yes
Finished: Yes
Enclosed: Yes
Contiguous: Yes
Permitted: Yes
Wet space: No
Addition: No
Conversion: No

22 Floor 3 - Primary Bedroom



Dimensions: 13'0" x 16'5"
Area: 213 sq. ft
Counted as living area: Yes

Heated: Yes
Finished: Yes
Enclosed: Yes
Contiguous: Yes
Permitted: Yes
Wet space: No
Addition: No
Conversion: No