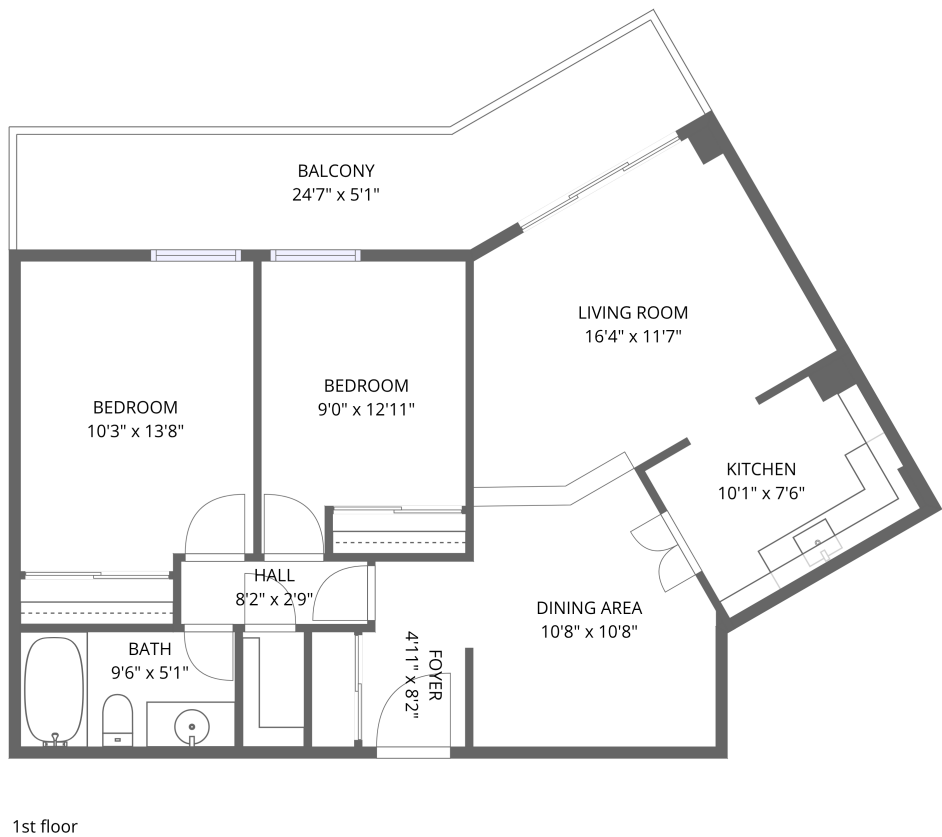


Home data report

1171 Ambleside Drive, Woodroffe - Lincoln Heights, Woodpark,
Ottawa, Ontario, Canada, K2B 8E1, #808




Total Area: 791 sq. ft

1st Floor: 791 sq. ft

Excluded: Balcony 153 sq. ft, Walls: 0 sq. ft

Property summary

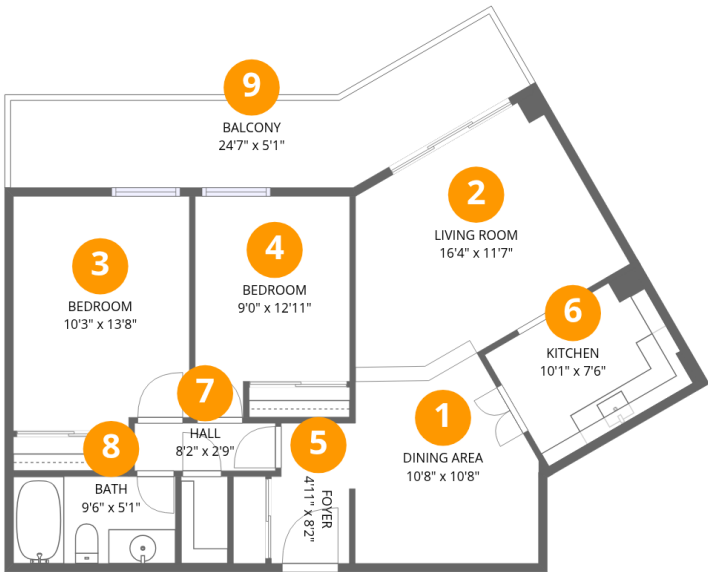
 1 Floors

 2 Bedrooms

 1 Bathrooms

Home data report

1171 Ambleside Drive, Woodroffe - Lincoln Heights, Woodpark,
Ottawa, Ontario, Canada, K2B 8E1, #808



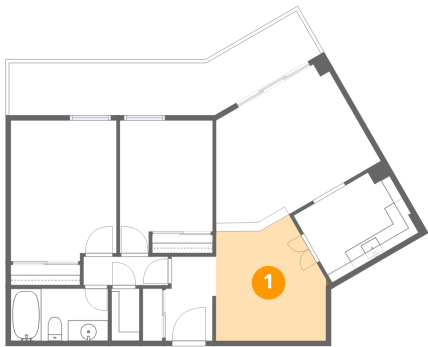
Room dimensions

Floor 1 Total:791sqft Excluded: 153sqft

#		Dimensions	sqft	Counted as living area
1	Dining Area	10'8" x 10'8"	111 sq. ft	Yes
2	Living Room	16'4" x 11'7"	169 sq. ft	Yes
3	Bedroom	10'3" x 13'8"	138 sq. ft	Yes
4	Bedroom	9'0" x 12'11"	104 sq. ft	Yes
5	Foyer	4'11" x 8'2"	37 sq. ft	Yes
6	Kitchen	10'1" x 7'6"	77 sq. ft	Yes
7	Hall	8'2" x 2'9"	23 sq. ft	Yes
8	Bath	9'6" x 5'1"	48 sq. ft	Yes
9	Balcony	24'7" x 5'1"	153 sq. ft	No

1171 Ambleside Drive, Woodroffe - Lincoln Heights, Woodpark,
Ottawa, Ontario, Canada, K2B 8E1, #808

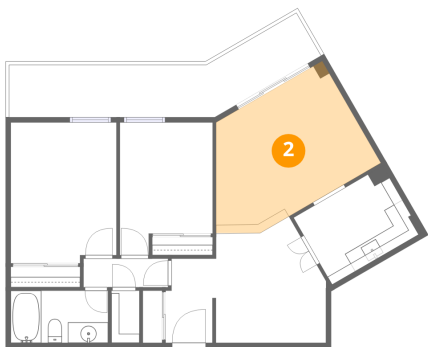
1 Floor 1 - Dining Area



Dimensions: 10'8" x 10'8"
Area: 111 sq. ft
Counted as living area: Yes

Heated: Yes
Finished: Yes
Enclosed: Yes
Contiguous: Yes
Permitted: Yes
Wet space: No
Addition: No
Conversion: No

2 Floor 1 - Living Room



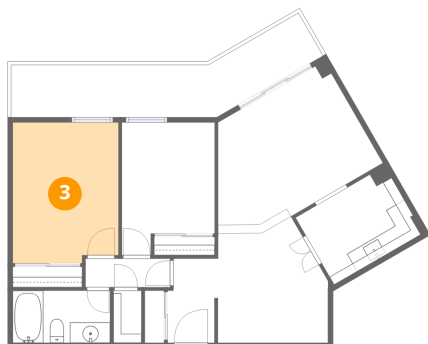
Dimensions: 16'4" x 11'7"
Area: 169 sq. ft
Counted as living area: Yes

Heated: Yes
Finished: Yes
Enclosed: Yes
Contiguous: Yes
Permitted: Yes
Wet space: No
Addition: No
Conversion: No

Home data report

1171 Ambleside Drive, Woodroffe - Lincoln Heights, Woodpark,
Ottawa, Ontario, Canada, K2B 8E1, #808

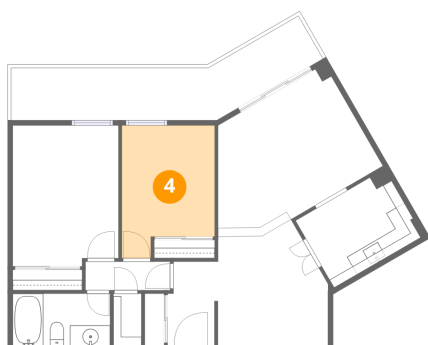
3 Floor 1 - Bedroom



Dimensions: 10'3" x 13'8"
Area: 138 sq. ft
Counted as living area: Yes

Heated: Yes
Finished: Yes
Enclosed: Yes
Contiguous: Yes
Permitted: Yes
Wet space: No
Addition: No
Conversion: No

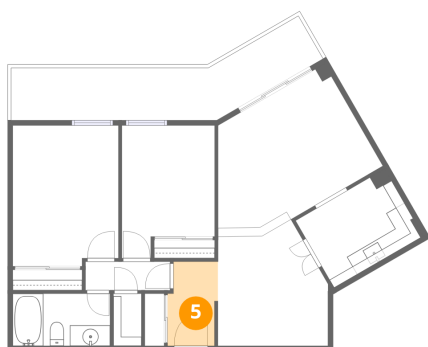
4 Floor 1 - Bedroom



Dimensions: 9'0" x 12'11"
Area: 104 sq. ft
Counted as living area: Yes

Heated: Yes
Finished: Yes
Enclosed: Yes
Contiguous: Yes
Permitted: Yes
Wet space: No
Addition: No
Conversion: No

5 Floor 1 - Foyer

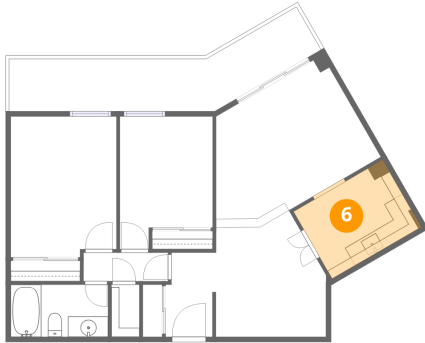


Dimensions: 4'11" x 8'2"
Area: 37 sq. ft
Counted as living area: Yes

Heated: Yes
Finished: Yes
Enclosed: Yes
Contiguous: Yes
Permitted: Yes
Wet space: No
Addition: No
Conversion: No

1171 Ambleside Drive, Woodroffe - Lincoln Heights, Woodpark,
Ottawa, Ontario, Canada, K2B 8E1, #808

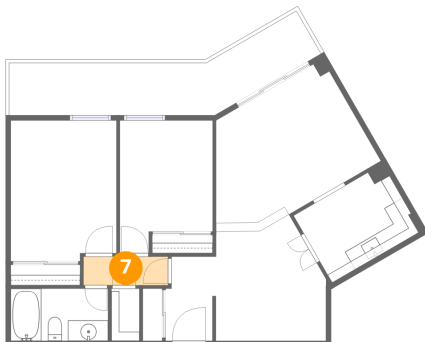
6 Floor 1 - Kitchen



Dimensions: 10'1" x 7'6"
Area: 77 sq. ft
Counted as living area: Yes

Heated: Yes
Finished: Yes
Enclosed: Yes
Contiguous: Yes
Permitted: Yes
Wet space: No
Addition: No
Conversion: No

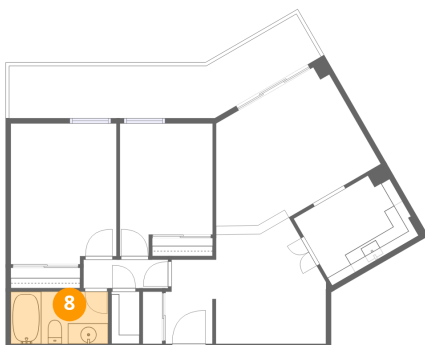
7 Floor 1 - Hall



Dimensions: 8'2" x 2'9"
Area: 23 sq. ft
Counted as living area: Yes

Heated: Yes
Finished: Yes
Enclosed: Yes
Contiguous: Yes
Permitted: Yes
Wet space: No
Addition: No
Conversion: No

8 Floor 1 - Bath

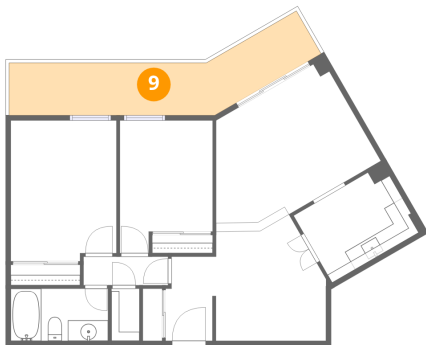


Dimensions: 9'6" x 5'1"
Area: 48 sq. ft
Counted as living area: Yes

Heated: Yes
Finished: Yes
Enclosed: Yes
Contiguous: Yes
Permitted: Yes
Wet space: Yes
Addition: No
Conversion: No

1171 Ambleside Drive, Woodroffe - Lincoln Heights, Woodpark,
Ottawa, Ontario, Canada, K2B 8E1, #808

9 Floor 1 - Balcony



Dimensions: 24'7" x 5'1"
Area: 153 sq. ft
Counted as living area: No

Heated: No
Finished: No
Enclosed: No
Contiguous: Yes
Permitted: Yes
Wet space: No
Addition: No
Conversion: No