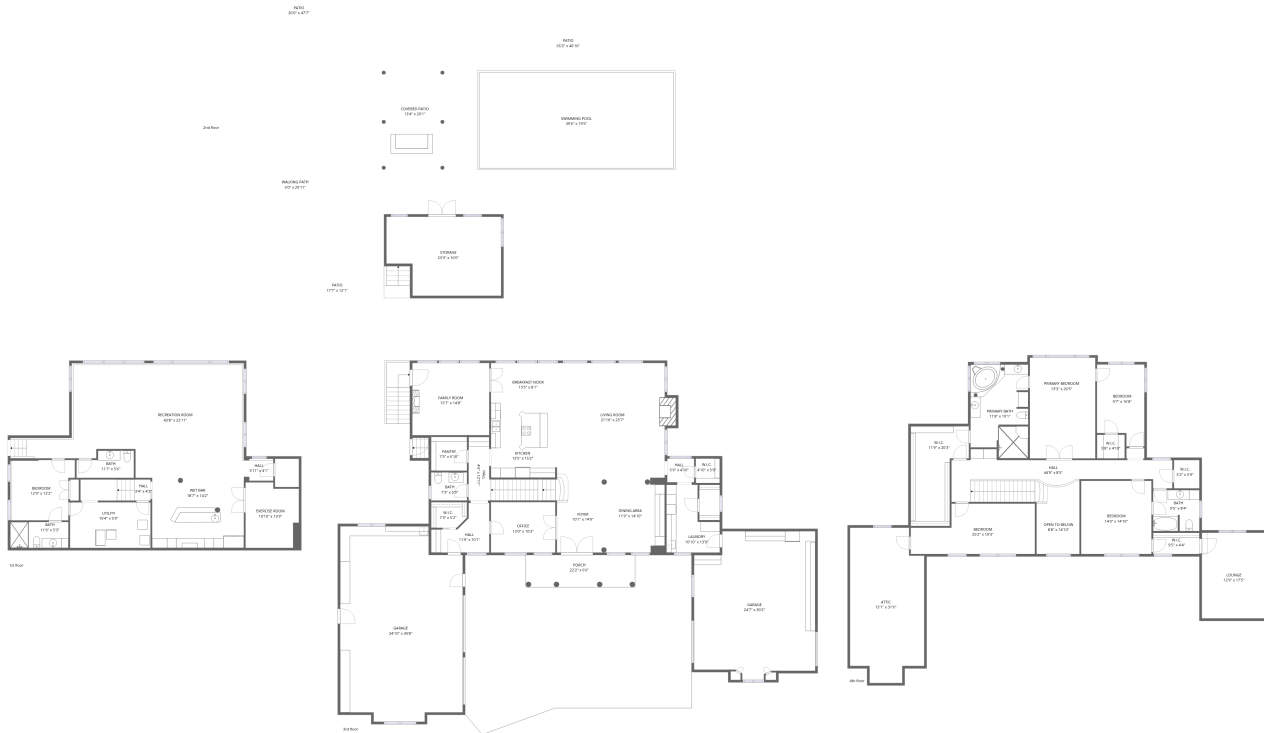


## Home data report

**11595 122nd Street South, Denmark Township, Hastings,  
Washington County, Minnesota, United States, 55033**



**Total Area: 6412 sq. ft**

1st Floor: 1609 sq. ft, 2nd Floor: 0 sq. ft, 3rd Floor: 2789 sq. ft, 4th Floor: 2014 sq. ft

Excluded: Utility 151 sq. ft, Undefined 28 sq. ft, Patio 2323 sq. ft, Covered patio 385 sq. ft,  
Storage 338 sq. ft, Garage 917 sq. ft, Porch 144 sq. ft, Fireplace 15 sq. ft, Attic 427 sq. ft,  
Open to below 113 sq. ft, Walls: 513 sq. ft

## Property summary



**4**  
Floors




**5**  
Bedrooms



**3**  
Bathrooms

Home data report

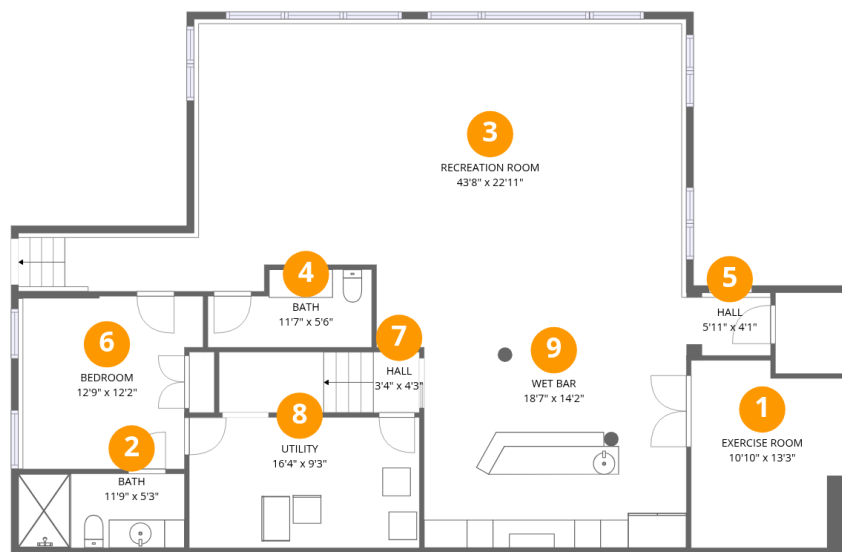
**11595 122nd Street South, Denmark Township, Hastings,  
Washington County, Minnesota, United States, 55033**

 **2**  
Half baths

 **2**  
Garages

Home data report

**11595 122nd Street South, Denmark Township, Hastings, Washington County, Minnesota, United States, 55033**



## Room dimensions

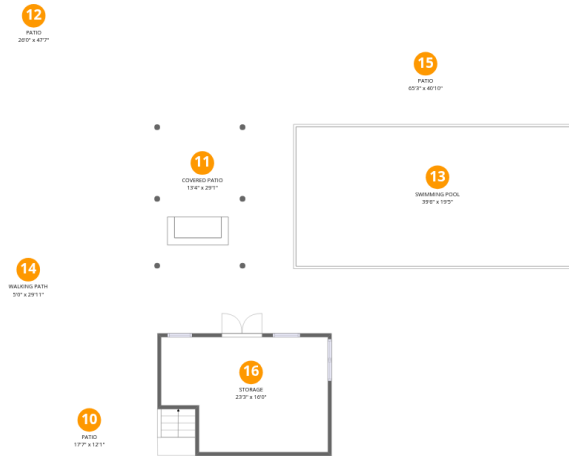
Floor 1

Total:1609sqft Excluded: 179sqft

#		Dimensions	sqft	Counted as living area
1	Exercise Room	10'10" x 13'3"	137 sq. ft	Yes
2	Bath	11'9" x 5'3"	62 sq. ft	Yes
3	Recreation Room	43'8" x 22'11"	798 sq. ft	Yes
4	Bath	11'7" x 5'6"	56 sq. ft	Yes
5	Hall	5'11" x 4'1"	27 sq. ft	Yes
6	Bedroom	12'9" x 12'2"	148 sq. ft	Yes
7	Hall	3'4" x 4'3"	61 sq. ft	Yes
8	Utility	16'4" x 9'3"	151 sq. ft	No
9	Wet Bar	18'7" x 14'2"	264 sq. ft	Yes

# Home data report

## 11595 122nd Street South, Denmark Township, Hastings, Washington County, Minnesota, United States, 55033



### Room dimensions

Floor 2

Total: 0sqft

Excluded: 3046sqft

#		Dimensions	sqft	Counted as living area
10	Patio	17'7" x 12'1"	145 sq. ft	No
11	Covered Patio	13'4" x 29'1"	385 sq. ft	No
12	Patio	26'0" x 47'7"	940 sq. ft	No
13	Swimming Pool	39'6" x 19'5"	767 sq. ft	No
14	Walking Path	5'0" x 29'11"	140 sq. ft	No
15	Patio	65'3" x 40'10"	2005 sq. ft	No
16	Storage	23'3" x 16'0"	338 sq. ft	No

Home data report

11595 122nd Street South, Denmark Township, Hastings, Washington County, Minnesota, United States, 55033



### Room dimensions

Floor 3

Total:2789sqft

Excluded: 1076sqft

#		Dimensions	sqft	Counted as living area
17	Foyer	10'1" x 14'9"	207 sq. ft	Yes
18	W.I.C.	7'3" x 5'2"	36 sq. ft	Yes
19	Family Room	15'7" x 14'8"	229 sq. ft	Yes
20	Hall	5'6" x 4'10"	26 sq. ft	Yes
21	Bath	7'3" x 5'9"	42 sq. ft	Yes
22	Laundry	10'10" x 13'9"	115 sq. ft	Yes
23	Garage	24'7" x 30'2"	675 sq. ft	Yes
24	Office	13'0" x 10'3"	133 sq. ft	Yes
25	Breakfast Nook	13'5" x 8'1"	109 sq. ft	Yes
26	Pantry	7'3" x 6'10"	50 sq. ft	Yes
27	Hall	4'6" x 12'11"	55 sq. ft	Yes

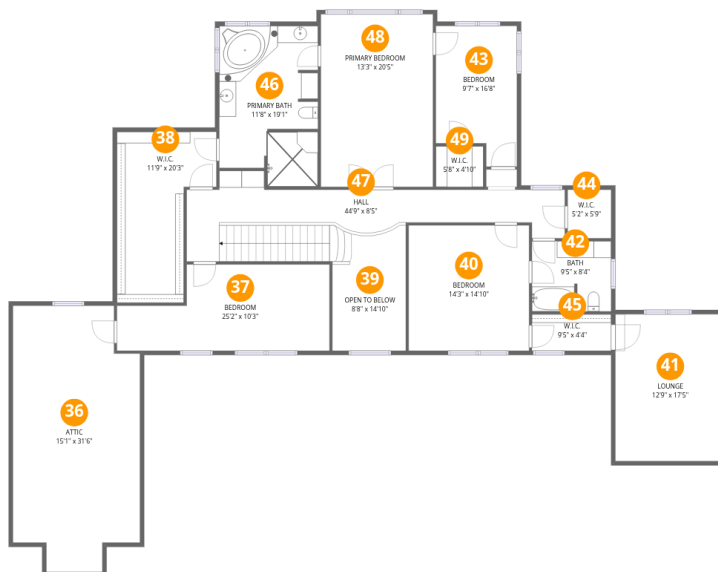
Home data report

**11595 122nd Street South, Denmark Township, Hastings,  
Washington County, Minnesota, United States, 55033**

#		Dimensions	sqft	Counted as living area
28	Porch	22'2" x 6'6"	144 sq. ft	No
29	Driveway	45'11" x 36'5"	1332 sq. ft	No
30	Hall	11'9" x 10'1"	80 sq. ft	Yes
31	Garage	24'10" x 39'8"	917 sq. ft	No
32	W.I.C.	4'10" x 5'0"	24 sq. ft	Yes
33	Living Room	21'10" x 23'7"	529 sq. ft	Yes
34	Dining Area	11'9" x 14'10"	175 sq. ft	Yes
35	Kitchen	13'5" x 15'2"	202 sq. ft	Yes

Home data report

11595 122nd Street South, Denmark Township, Hastings, Washington County, Minnesota, United States, 55033



## Room dimensions

Floor 4

Total:2014sqft Excluded: 540sqft

#		Dimensions	sqft	Counted as living area
36	Attic	15'1" x 31'6"	427 sq. ft	No
37	Bedroom	25'2" x 10'3"	217 sq. ft	Yes
38	W.I.C.	11'9" x 20'3"	186 sq. ft	Yes
39	Open To Below	8'8" x 14'10"	113 sq. ft	No
40	Bedroom	14'3" x 14'10"	212 sq. ft	Yes
41	Lounge	12'9" x 17'5"	222 sq. ft	Yes
42	Bath	9'5" x 8'4"	77 sq. ft	Yes
43	Bedroom	9'7" x 16'8"	144 sq. ft	Yes
44	W.I.C.	5'2" x 5'9"	30 sq. ft	Yes
45	W.I.C.	9'5" x 4'4"	41 sq. ft	Yes
46	Primary Bath	11'8" x 19'1"	206 sq. ft	Yes

Home data report

**11595 122nd Street South, Denmark Township, Hastings,  
Washington County, Minnesota, United States, 55033**

#		Dimensions	sqft	Counted as living area
47	Hall	44'9" x 8'5"	291 sq. ft	Yes
48	Primary Bedroom	13'3" x 20'5"	271 sq. ft	Yes
49	W.I.C.	5'8" x 4'10"	27 sq. ft	Yes

11595 122nd Street South, Denmark Township, Hastings,  
Washington County, Minnesota, United States, 55033

## 1 Floor 1 - Exercise Room



Dimensions: 10'10" x 13'3"  
Area: 137 sq. ft  
Counted as living area: Yes

Heated: Yes  
Finished: Yes  
Enclosed: Yes  
Contiguous: Yes  
Permitted: Yes  
Wet space: No  
Addition: No  
Conversion: No

## 2 Floor 1 - Bath

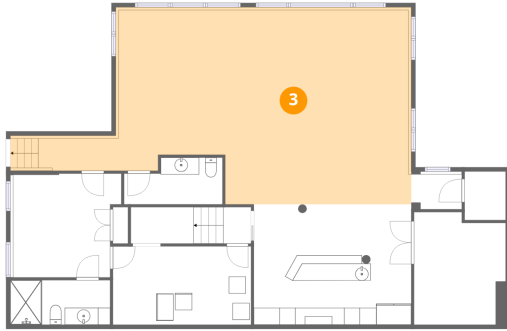


Dimensions: 11'9" x 5'3"  
Area: 62 sq. ft  
Counted as living area: Yes

Heated: Yes  
Finished: Yes  
Enclosed: Yes  
Contiguous: Yes  
Permitted: Yes  
Wet space: Yes  
Addition: No  
Conversion: No

11595 122nd Street South, Denmark Township, Hastings,  
Washington County, Minnesota, United States, 55033

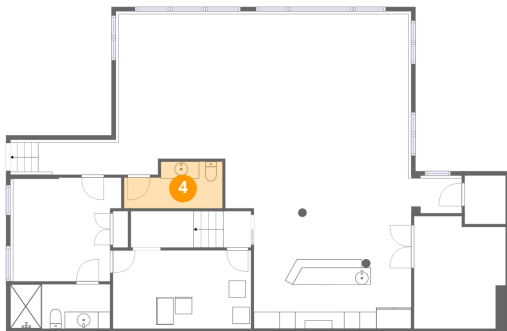
### 3 Floor 1 - Recreation Room



Dimensions: 43'8" x 22'11"  
Area: 798 sq. ft  
Counted as living area: Yes

Heated: Yes  
Finished: Yes  
Enclosed: Yes  
Contiguous: Yes  
Permitted: Yes  
Wet space: No  
Addition: No  
Conversion: No

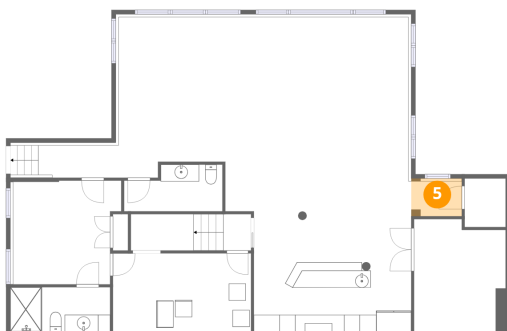
### 4 Floor 1 - Bath



Dimensions: 11'7" x 5'6"  
Area: 56 sq. ft  
Counted as living area: Yes

Heated: Yes  
Finished: Yes  
Enclosed: Yes  
Contiguous: Yes  
Permitted: Yes  
Wet space: Yes  
Addition: No  
Conversion: No

### 5 Floor 1 - Hall

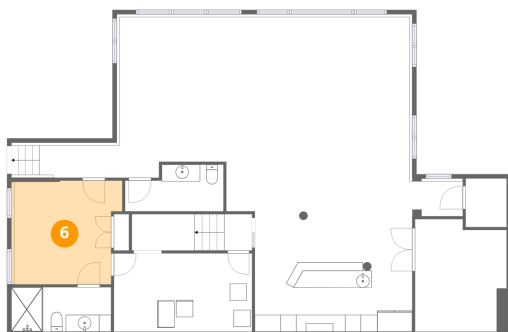


Dimensions: 5'11" x 4'1"  
Area: 27 sq. ft  
Counted as living area: Yes

Heated: Yes  
Finished: Yes  
Enclosed: Yes  
Contiguous: Yes  
Permitted: Yes  
Wet space: No  
Addition: No  
Conversion: No

11595 122nd Street South, Denmark Township, Hastings,  
Washington County, Minnesota, United States, 55033

### 6 Floor 1 - Bedroom



Dimensions: 12'9" x 12'2"  
Area: 148 sq. ft  
Counted as living area: Yes

Heated: Yes  
Finished: Yes  
Enclosed: Yes  
Contiguous: Yes  
Permitted: Yes  
Wet space: No  
Addition: No  
Conversion: No

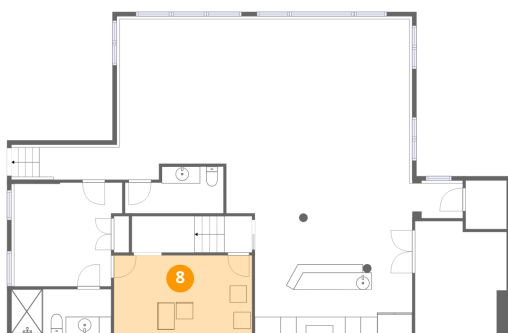
### 7 Floor 1 - Hall



Dimensions: 3'4" x 4'3"  
Area: 61 sq. ft  
Counted as living area: Yes

Heated: Yes  
Finished: Yes  
Enclosed: Yes  
Contiguous: Yes  
Permitted: Yes  
Wet space: No  
Addition: No  
Conversion: No

### 8 Floor 1 - Utility

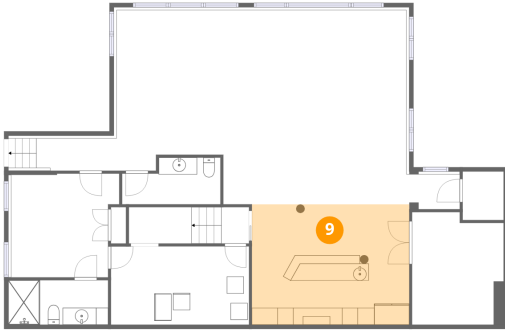


Dimensions: 16'4" x 9'3"  
Area: 151 sq. ft  
Counted as living area: No

Heated: Yes  
Finished: No  
Enclosed: Yes  
Contiguous: Yes  
Permitted: Yes  
Wet space: No  
Addition: No  
Conversion: No

11595 122nd Street South, Denmark Township, Hastings,  
Washington County, Minnesota, United States, 55033

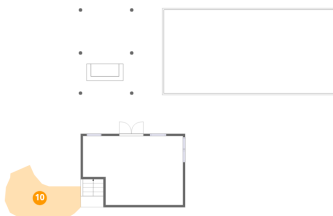
9 Floor 1 - Wet Bar



Dimensions: 18'7" x 14'2"  
Area: 264 sq. ft  
Counted as living area: Yes

Heated: Yes  
Finished: Yes  
Enclosed: Yes  
Contiguous: Yes  
Permitted: Yes  
Wet space: No  
Addition: No  
Conversion: No

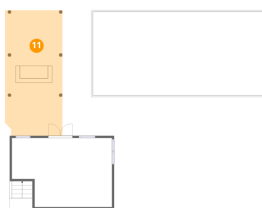
10 Floor 2 - Patio



Dimensions: 17'7" x 12'1"  
Area: 145 sq. ft  
Counted as living area: No

Heated: No  
Finished: No  
Enclosed: No  
Contiguous: Yes  
Permitted: Yes  
Wet space: No  
Addition: No  
Conversion: No

11 Floor 2 - Covered Patio

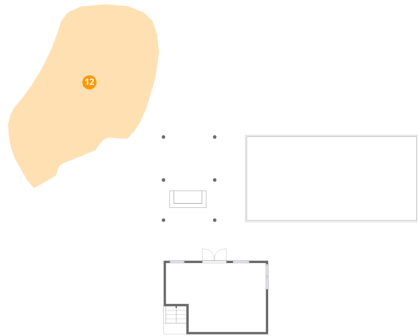


Dimensions: 13'4" x 29'1"  
Area: 385 sq. ft  
Counted as living area: No

Heated: No  
Finished: No  
Enclosed: No  
Contiguous: Yes  
Permitted: Yes  
Wet space: No  
Addition: No  
Conversion: No

11595 122nd Street South, Denmark Township, Hastings,  
Washington County, Minnesota, United States, 55033

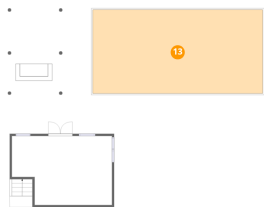
## 12 Floor 2 - Patio



Dimensions: 26'0" x 47'7"  
Area: 940 sq. ft  
Counted as living area: No

Heated: No  
Finished: No  
Enclosed: No  
Contiguous: Yes  
Permitted: Yes  
Wet space: No  
Addition: No  
Conversion: No

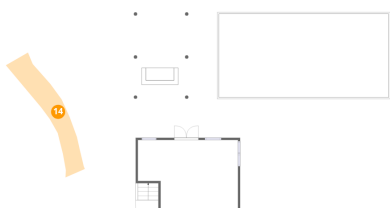
## 13 Floor 2 - Swimming Pool



Dimensions: 39'6" x 19'5"  
Area: 767 sq. ft  
Counted as living area: No

Heated: No  
Finished: No  
Enclosed: No  
Contiguous: Yes  
Permitted: No  
Wet space: No  
Addition: No  
Conversion: No

## 14 Floor 2 - Walking Path

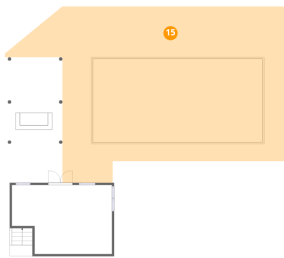


Dimensions: 5'0" x 29'11"  
Area: 140 sq. ft  
Counted as living area: No

Heated: No  
Finished: No  
Enclosed: No  
Contiguous: Yes  
Permitted: No  
Wet space: No  
Addition: No  
Conversion: No

11595 122nd Street South, Denmark Township, Hastings,  
Washington County, Minnesota, United States, 55033

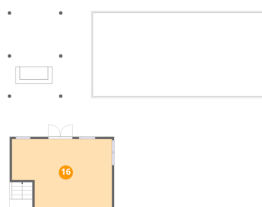
### 15 Floor 2 - Patio



Dimensions: 65'3" x 40'10"  
Area: 2005 sq. ft  
Counted as living area: No

Heated: No  
Finished: No  
Enclosed: No  
Contiguous: Yes  
Permitted: Yes  
Wet space: No  
Addition: No  
Conversion: No

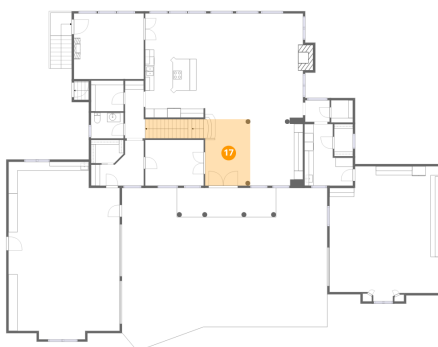
### 16 Floor 2 - Storage



Dimensions: 23'3" x 16'0"  
Area: 338 sq. ft  
Counted as living area: No

Heated: No  
Finished: No  
Enclosed: No  
Contiguous: Yes  
Permitted: Yes  
Wet space: No  
Addition: No  
Conversion: No

### 17 Floor 3 - Foyer



Dimensions: 10'1" x 14'9"  
Area: 207 sq. ft  
Counted as living area: Yes

Heated: Yes  
Finished: Yes  
Enclosed: Yes  
Contiguous: Yes  
Permitted: Yes  
Wet space: No  
Addition: No  
Conversion: No

11595 122nd Street South, Denmark Township, Hastings,  
Washington County, Minnesota, United States, 55033

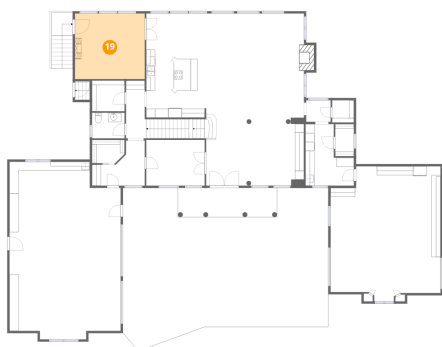
**18** Floor 3 - W.I.C.



Dimensions: 7'3" x 5'2"  
Area: 36 sq. ft  
Counted as living area: Yes

Heated: Yes  
Finished: Yes  
Enclosed: Yes  
Contiguous: Yes  
Permitted: Yes  
Wet space: No  
Addition: No  
Conversion: No

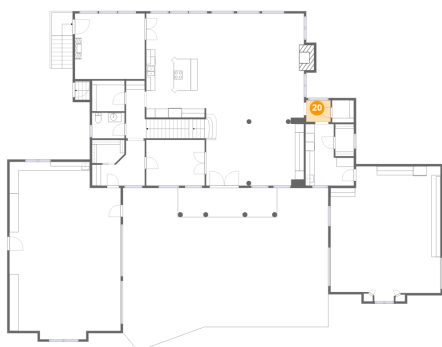
**19** Floor 3 - Family Room



Dimensions: 15'7" x 14'8"  
Area: 229 sq. ft  
Counted as living area: Yes

Heated: Yes  
Finished: Yes  
Enclosed: Yes  
Contiguous: Yes  
Permitted: Yes  
Wet space: No  
Addition: No  
Conversion: No

**20** Floor 3 - Hall

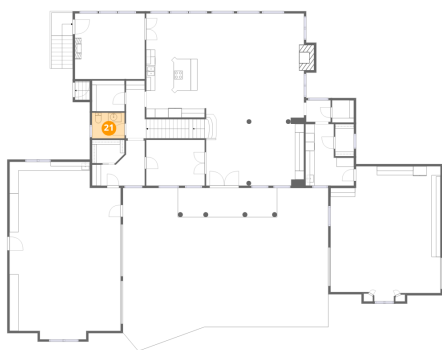


Dimensions: 5'6" x 4'10"  
Area: 26 sq. ft  
Counted as living area: Yes

Heated: Yes  
Finished: Yes  
Enclosed: Yes  
Contiguous: Yes  
Permitted: Yes  
Wet space: No  
Addition: No  
Conversion: No

11595 122nd Street South, Denmark Township, Hastings,  
Washington County, Minnesota, United States, 55033

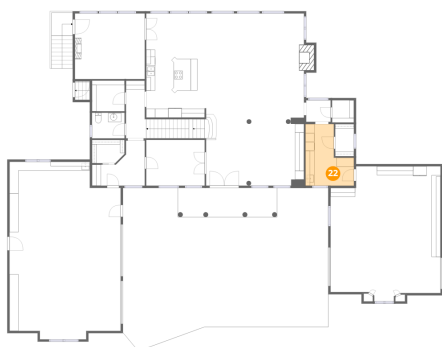
**21** Floor 3 - Bath



Dimensions: 7'3" x 5'9"  
Area: 42 sq. ft  
Counted as living area: Yes

Heated: Yes  
Finished: Yes  
Enclosed: Yes  
Contiguous: Yes  
Permitted: Yes  
Wet space: Yes  
Addition: No  
Conversion: No

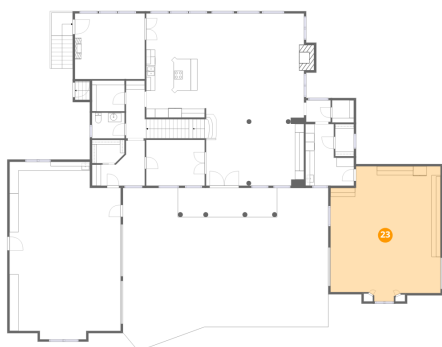
**22** Floor 3 - Laundry



Dimensions: 10'10" x 13'9"  
Area: 115 sq. ft  
Counted as living area: Yes

Heated: Yes  
Finished: Yes  
Enclosed: Yes  
Contiguous: Yes  
Permitted: Yes  
Wet space: No  
Addition: No  
Conversion: No

**23** Floor 3 - Garage

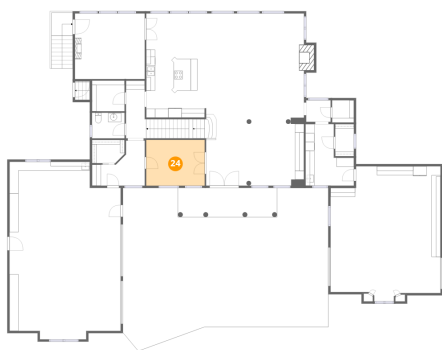


Dimensions: 24'7" x 30'2"  
Area: 675 sq. ft  
Counted as living area: No

Heated: No  
Finished: Yes  
Enclosed: Yes  
Contiguous: Yes  
Permitted: Yes  
Wet space: No  
Addition: No  
Conversion: No

11595 122nd Street South, Denmark Township, Hastings,  
Washington County, Minnesota, United States, 55033

### 24 Floor 3 - Office



Dimensions: 13'0" x 10'3"  
Area: 133 sq. ft  
Counted as living area: Yes

Heated: Yes  
Finished: Yes  
Enclosed: Yes  
Contiguous: Yes  
Permitted: Yes  
Wet space: No  
Addition: No  
Conversion: No

### 25 Floor 3 - Breakfast Nook



Dimensions: 13'5" x 8'1"  
Area: 109 sq. ft  
Counted as living area: Yes

Heated: Yes  
Finished: Yes  
Enclosed: Yes  
Contiguous: Yes  
Permitted: Yes  
Wet space: No  
Addition: No  
Conversion: No

### 26 Floor 3 - Pantry

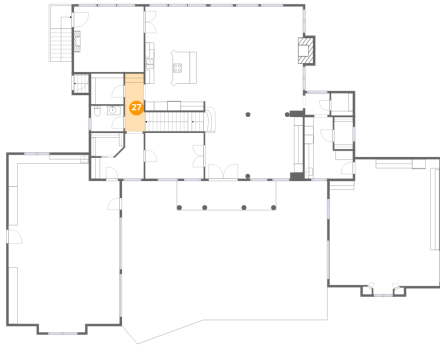


Dimensions: 7'3" x 6'10"  
Area: 50 sq. ft  
Counted as living area: Yes

Heated: Yes  
Finished: Yes  
Enclosed: Yes  
Contiguous: Yes  
Permitted: Yes  
Wet space: No  
Addition: No  
Conversion: No

11595 122nd Street South, Denmark Township, Hastings,  
Washington County, Minnesota, United States, 55033

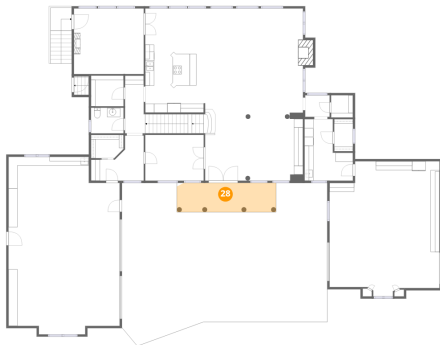
**27** Floor 3 - Hall



Dimensions: 4'6" x 12'11"  
Area: 55 sq. ft  
Counted as living area: Yes

Heated: Yes  
Finished: Yes  
Enclosed: Yes  
Contiguous: Yes  
Permitted: Yes  
Wet space: No  
Addition: No  
Conversion: No

**28** Floor 3 - Porch



Dimensions: 22'2" x 6'6"  
Area: 144 sq. ft  
Counted as living area: No

Heated: No  
Finished: No  
Enclosed: No  
Contiguous: Yes  
Permitted: Yes  
Wet space: No  
Addition: No  
Conversion: No

**29** Floor 3 - Driveway

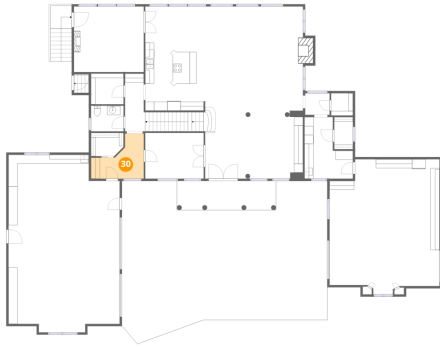


Dimensions: 45'11" x 36'5"  
Area: 1332 sq. ft  
Counted as living area: No

Heated: No  
Finished: No  
Enclosed: No  
Contiguous: Yes  
Permitted: No  
Wet space: No  
Addition: No  
Conversion: No

11595 122nd Street South, Denmark Township, Hastings,  
Washington County, Minnesota, United States, 55033

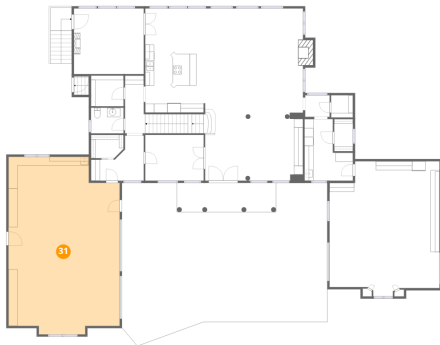
**30** Floor 3 - Hall



Dimensions: 11'9" x 10'1"  
Area: 80 sq. ft  
Counted as living area: Yes

Heated: Yes  
Finished: Yes  
Enclosed: Yes  
Contiguous: Yes  
Permitted: Yes  
Wet space: No  
Addition: No  
Conversion: No

**31** Floor 3 - Garage



Dimensions: 24'10" x 39'8"  
Area: 917 sq. ft  
Counted as living area: No

Heated: No  
Finished: No  
Enclosed: Yes  
Contiguous: Yes  
Permitted: Yes  
Wet space: No  
Addition: No  
Conversion: No

**32** Floor 3 - W.I.C.

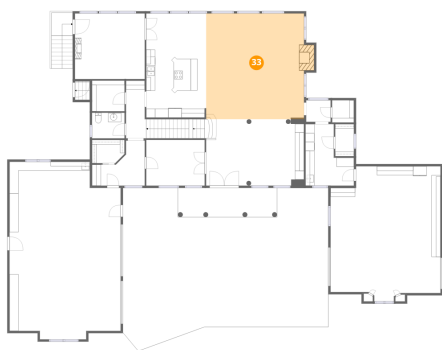


Dimensions: 4'10" x 5'0"  
Area: 24 sq. ft  
Counted as living area: Yes

Heated: Yes  
Finished: Yes  
Enclosed: Yes  
Contiguous: Yes  
Permitted: Yes  
Wet space: No  
Addition: No  
Conversion: No

11595 122nd Street South, Denmark Township, Hastings,  
Washington County, Minnesota, United States, 55033

### 33 Floor 3 - Living Room



Dimensions: 21'10" x 23'7"  
Area: 529 sq. ft  
Counted as living area: Yes

Heated: Yes  
Finished: Yes  
Enclosed: Yes  
Contiguous: Yes  
Permitted: Yes  
Wet space: No  
Addition: No  
Conversion: No

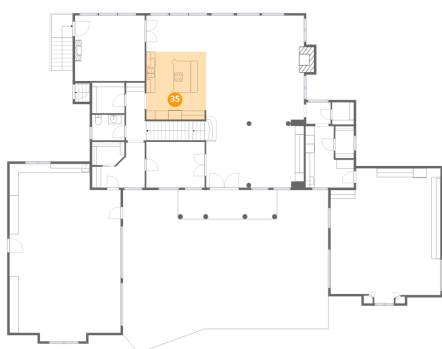
### 34 Floor 3 - Dining Area



Dimensions: 11'9" x 14'10"  
Area: 175 sq. ft  
Counted as living area: Yes

Heated: Yes  
Finished: Yes  
Enclosed: Yes  
Contiguous: Yes  
Permitted: Yes  
Wet space: No  
Addition: No  
Conversion: No

### 35 Floor 3 - Kitchen



Dimensions: 13'5" x 15'2"  
Area: 202 sq. ft  
Counted as living area: Yes

Heated: Yes  
Finished: Yes  
Enclosed: Yes  
Contiguous: Yes  
Permitted: Yes  
Wet space: No  
Addition: No  
Conversion: No

11595 122nd Street South, Denmark Township, Hastings,  
Washington County, Minnesota, United States, 55033

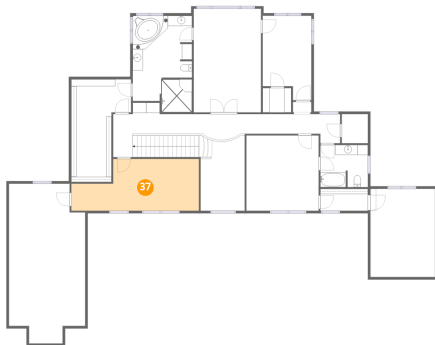
**36** Floor 4 - Attic



Dimensions: 15'1" x 31'6"  
Area: 427 sq. ft  
Counted as living area: No

Heated: No  
Finished: No  
Enclosed: Yes  
Contiguous: Yes  
Permitted: Yes  
Wet space: No  
Addition: No  
Conversion: No

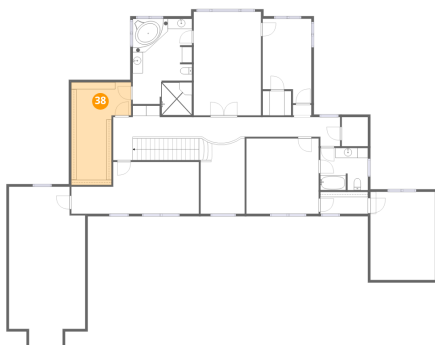
**37** Floor 4 - Bedroom



Dimensions: 25'2" x 10'3"  
Area: 217 sq. ft  
Counted as living area: Yes

Heated: Yes  
Finished: Yes  
Enclosed: Yes  
Contiguous: Yes  
Permitted: Yes  
Wet space: No  
Addition: No  
Conversion: No

**38** Floor 4 - W.I.C.

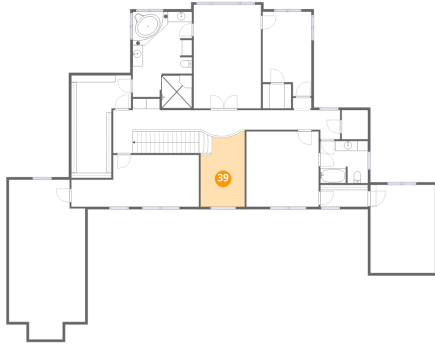


Dimensions: 11'9" x 20'3"  
Area: 186 sq. ft  
Counted as living area: Yes

Heated: Yes  
Finished: Yes  
Enclosed: Yes  
Contiguous: Yes  
Permitted: Yes  
Wet space: No  
Addition: No  
Conversion: No

11595 122nd Street South, Denmark Township, Hastings,  
Washington County, Minnesota, United States, 55033

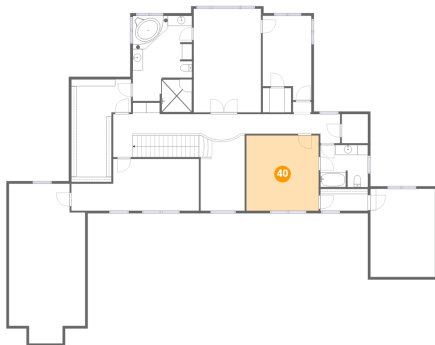
### 39 Floor 4 - Open To Below



Dimensions: 8'8" x 14'10"  
Area: 113 sq. ft  
Counted as living area: No

Heated: No  
Finished: No  
Enclosed: No  
Contiguous: Yes  
Permitted: No  
Wet space: No  
Addition: No  
Conversion: No

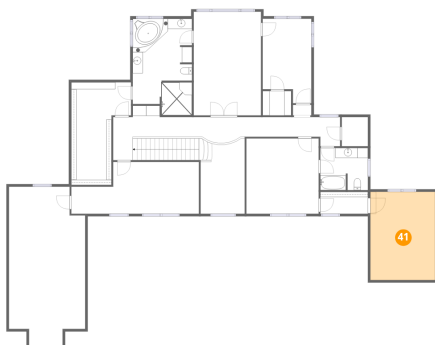
### 40 Floor 4 - Bedroom



Dimensions: 14'3" x 14'10"  
Area: 212 sq. ft  
Counted as living area: Yes

Heated: Yes  
Finished: Yes  
Enclosed: Yes  
Contiguous: Yes  
Permitted: Yes  
Wet space: No  
Addition: No  
Conversion: No

### 41 Floor 4 - Lounge

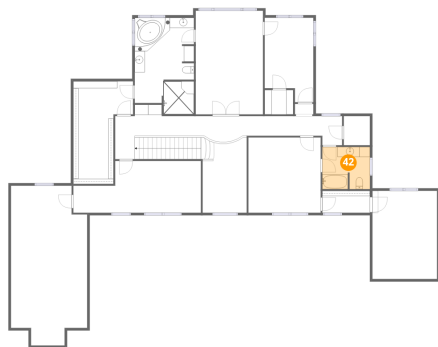


Dimensions: 12'9" x 17'5"  
Area: 222 sq. ft  
Counted as living area: Yes

Heated: Yes  
Finished: Yes  
Enclosed: Yes  
Contiguous: Yes  
Permitted: Yes  
Wet space: No  
Addition: No  
Conversion: No

11595 122nd Street South, Denmark Township, Hastings,  
Washington County, Minnesota, United States, 55033

### 42 Floor 4 - Bath



Dimensions: 9'5" x 8'4"  
Area: 77 sq. ft  
Counted as living area: Yes

Heated: Yes  
Finished: Yes  
Enclosed: Yes  
Contiguous: Yes  
Permitted: Yes  
Wet space: Yes  
Addition: No  
Conversion: No

### 43 Floor 4 - Bedroom



Dimensions: 9'7" x 16'8"  
Area: 144 sq. ft  
Counted as living area: Yes

Heated: Yes  
Finished: Yes  
Enclosed: Yes  
Contiguous: Yes  
Permitted: Yes  
Wet space: No  
Addition: No  
Conversion: No

### 44 Floor 4 - W.I.C.



Dimensions: 5'2" x 5'9"  
Area: 30 sq. ft  
Counted as living area: Yes

Heated: Yes  
Finished: Yes  
Enclosed: Yes  
Contiguous: Yes  
Permitted: Yes  
Wet space: No  
Addition: No  
Conversion: No

11595 122nd Street South, Denmark Township, Hastings,  
Washington County, Minnesota, United States, 55033

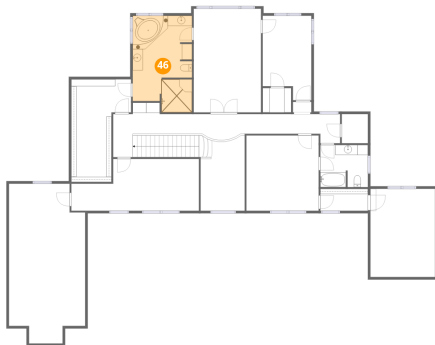
**45** Floor 4 - W.I.C.



Dimensions: 9'5" x 4'4"  
Area: 41 sq. ft  
Counted as living area: Yes

Heated: Yes  
Finished: Yes  
Enclosed: Yes  
Contiguous: Yes  
Permitted: Yes  
Wet space: No  
Addition: No  
Conversion: No

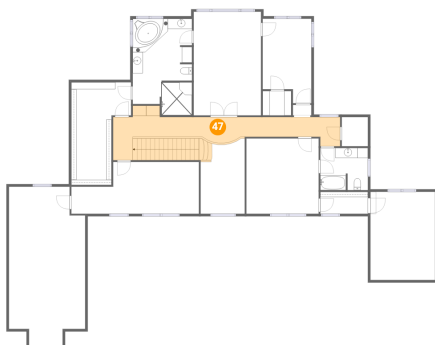
**46** Floor 4 - Primary Bath



Dimensions: 11'8" x 19'1"  
Area: 206 sq. ft  
Counted as living area: Yes

Heated: Yes  
Finished: Yes  
Enclosed: Yes  
Contiguous: Yes  
Permitted: Yes  
Wet space: Yes  
Addition: No  
Conversion: No

**47** Floor 4 - Hall



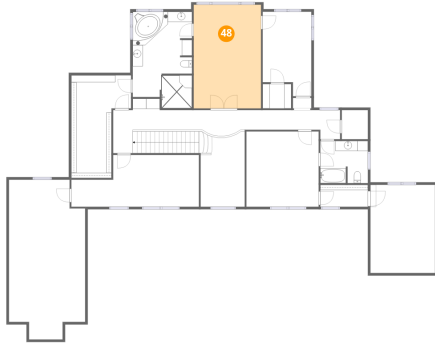
Dimensions: 44'9" x 8'5"  
Area: 291 sq. ft  
Counted as living area: Yes

Heated: Yes  
Finished: Yes  
Enclosed: Yes  
Contiguous: Yes  
Permitted: Yes  
Wet space: No  
Addition: No  
Conversion: No

11595 122nd Street South, Denmark Township, Hastings,  
Washington County, Minnesota, United States, 55033

**48** Floor 4 - Primary Bedroom

---



Dimensions: 13'3" x 20'5"  
Area: 271 sq. ft  
Counted as living area: Yes

Heated: Yes  
Finished: Yes  
Enclosed: Yes  
Contiguous: Yes  
Permitted: Yes  
Wet space: No  
Addition: No  
Conversion: No

**49** Floor 4 - W.I.C.

---



Dimensions: 5'8" x 4'10"  
Area: 27 sq. ft  
Counted as living area: Yes

Heated: Yes  
Finished: Yes  
Enclosed: Yes  
Contiguous: Yes  
Permitted: Yes  
Wet space: No  
Addition: No  
Conversion: No