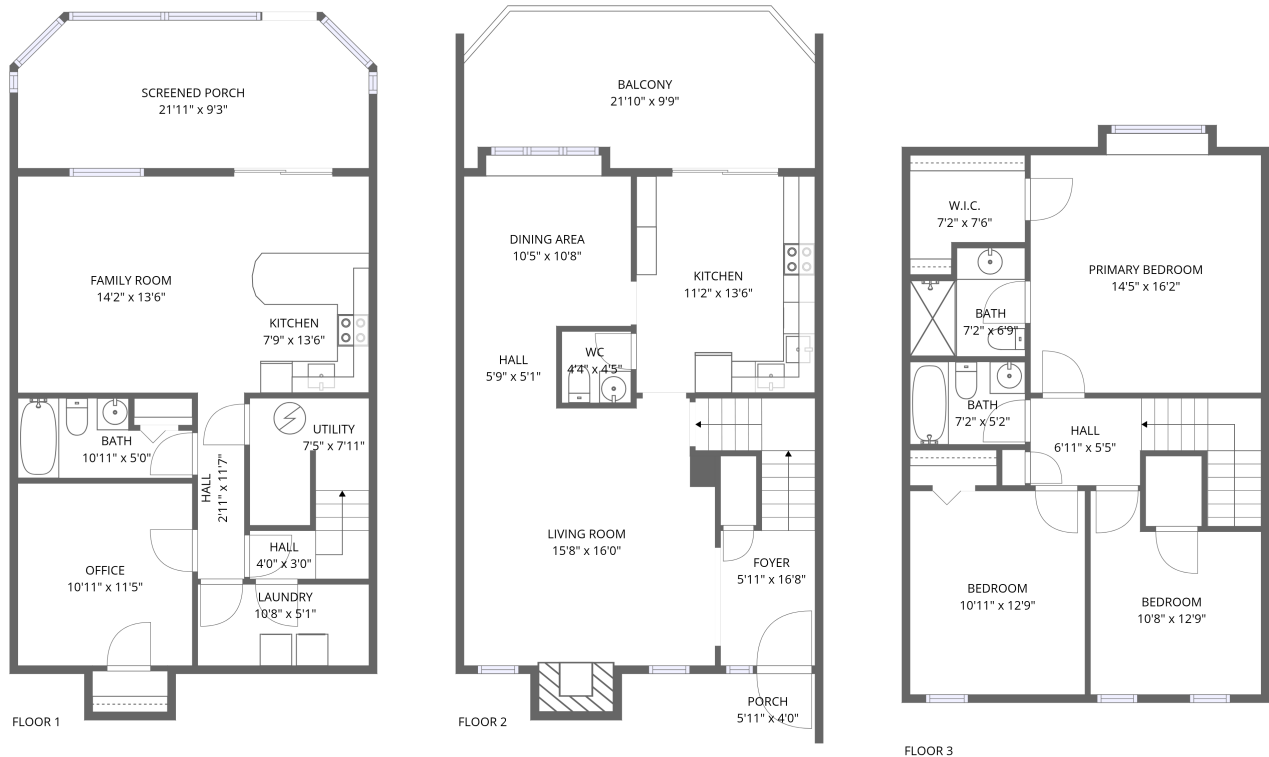


## Home report

3543 Londonderry Lane, Ruxton, Cave Spring, Roanoke,  
Roanoke County, Virginia, United States, 24018

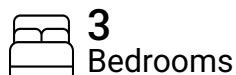


**Total Area: 2054 sq. ft**

Floor 1: 623 sq. ft, Floor 2: 683 sq. ft, Floor 3: 748 sq. ft

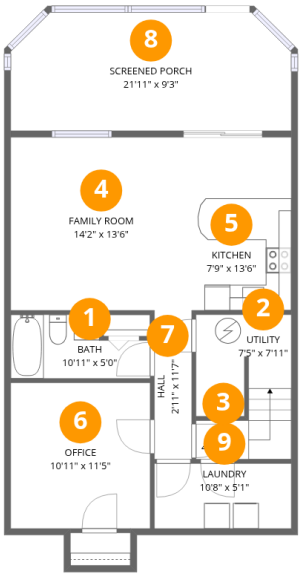
Excluded: Screened porch 193 sq. ft, Utility 60 sq. ft, Porch 24 sq. ft, Balcony 195 sq. ft, Fireplace 16 sq. ft, Walls: 192 sq. ft

## Property summary



Home report

3543 Londonderry Lane, Ruxton, Cave Spring, Roanoke,  
Roanoke County, Virginia, United States, 24018



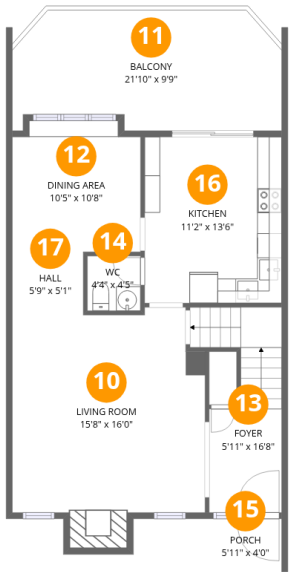
Room dimensions

Floor 1 Total:623sqft Excluded: 253sqft

#		Max Dimensions	sqft	Included
1	Bath	10'11" x 5'0"	46 sq. ft	Yes
2	Utility	7'5" x 7'11"	59 sq. ft	No
3	Hall	4'0" x 3'0"	22 sq. ft	Yes
4	Family Room	14'2" x 13'6"	191 sq. ft	Yes
5	Kitchen	7'9" x 13'6"	105 sq. ft	Yes
6	Office	10'11" x 11'5"	124 sq. ft	Yes
7	Hall	2'11" x 11'7"	34 sq. ft	Yes
8	Screened Porch	21'11" x 9'3"	193 sq. ft	No
9	Laundry	10'8" x 5'1"	54 sq. ft	Yes

Home report

3543 Londonderry Lane, Ruxton, Cave Spring, Roanoke,  
Roanoke County, Virginia, United States, 24018



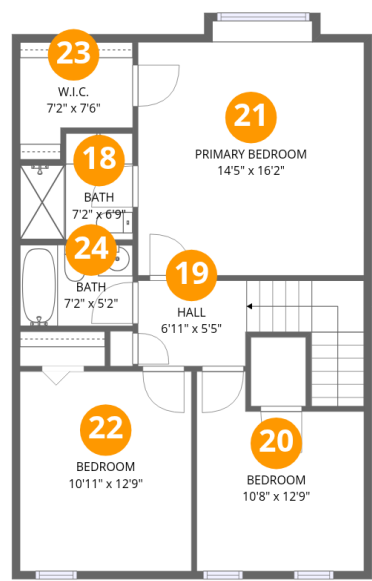
Room dimensions

Floor 2 Total:683sqft   Excluded: 235sqft

#		Max Dimensions	sqft	Included
10	Living Room	15'8" x 16'0"	263 sq. ft	Yes
11	Balcony	21'10" x 9'9"	195 sq. ft	No
12	Dining Area	10'5" x 10'8"	107 sq. ft	Yes
13	Foyer	5'11" x 16'8"	91 sq. ft	Yes
14	WC	4'4" x 4'5"	19 sq. ft	Yes
15	Porch	5'11" x 4'0"	24 sq. ft	No
16	Kitchen	11'2" x 13'6"	151 sq. ft	Yes
17	Hall	5'9" x 5'1"	30 sq. ft	Yes

Home report

3543 Londonderry Lane, Ruxton, Cave Spring, Roanoke,  
Roanoke County, Virginia, United States, 24018



Room dimensions

Floor 3 Total:748sqft   Excluded: 0sqft

#		Max Dimensions	sqft	Included
18	Bath	7'2" x 6'9"	43 sq. ft	Yes
19	Hall	6'11" x 5'5"	78 sq. ft	Yes
20	Bedroom	10'8" x 12'9"	116 sq. ft	Yes
21	Primary Bedroom	14'5" x 16'2"	222 sq. ft	Yes
22	Bedroom	10'11" x 12'9"	139 sq. ft	Yes
23	W.I.C.	7'2" x 7'6"	44 sq. ft	Yes
24	Bath	7'2" x 5'2"	37 sq. ft	Yes

3543 Londonderry Lane, Ruxton, Cave Spring, Roanoke,  
Roanoke County, Virginia, United States, 24018

1 Floor 1 - Bath



Max Dimensions: 10'11" x 5'0"  
Calculated Area: 46 sq. ft  
Included: Yes

Heated: Yes  
Finished: Yes  
Enclosed: Yes  
Contiguous: Yes  
Permitted: Yes  
Wet space: Yes  
Addition: No  
Conversion: No

2 Floor 1 - Utility



Max Dimensions: 7'5" x 7'11"  
Calculated Area: 59 sq. ft  
Included: No

Heated: Yes  
Finished: No  
Enclosed: Yes  
Contiguous: Yes  
Permitted: Yes  
Wet space: No  
Addition: No  
Conversion: No

3543 Londonderry Lane, Ruxton, Cave Spring, Roanoke,  
Roanoke County, Virginia, United States, 24018

3 Floor 1 - Hall



Max Dimensions: 4'0" x 3'0"  
Calculated Area: 22 sq. ft  
Included: Yes

Heated: Yes  
Finished: Yes  
Enclosed: Yes  
Contiguous: Yes  
Permitted: Yes  
Wet space: No  
Addition: No  
Conversion: No

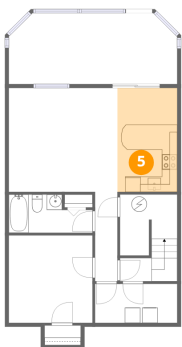
4 Floor 1 - Family Room



Max Dimensions: 14'2" x 13'6"  
Calculated Area: 191 sq. ft  
Included: Yes

Heated: Yes  
Finished: Yes  
Enclosed: Yes  
Contiguous: Yes  
Permitted: Yes  
Wet space: No  
Addition: No  
Conversion: No

5 Floor 1 - Kitchen



Max Dimensions: 7'9" x 13'6"  
Calculated Area: 105 sq. ft  
Included: Yes

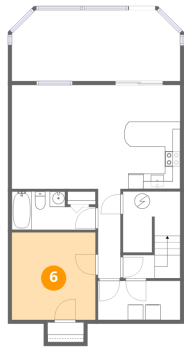
Heated: Yes  
Finished: Yes  
Enclosed: Yes  
Contiguous: Yes  
Permitted: Yes  
Wet space: No  
Addition: No  
Conversion: No

## Home report

3543 Londonderry Lane, Ruxton, Cave Spring, Roanoke,  
Roanoke County, Virginia, United States, 24018

### 6 Floor 1 - Office

---

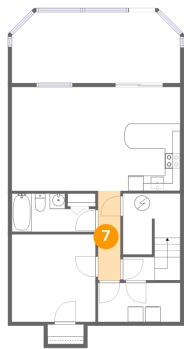


Max Dimensions: 10'11" x 11'5"  
Calculated Area: 124 sq. ft  
Included: Yes

Heated: Yes  
Finished: Yes  
Enclosed: Yes  
Contiguous: Yes  
Permitted: Yes  
Wet space: No  
Addition: No  
Conversion: No

### 7 Floor 1 - Hall

---

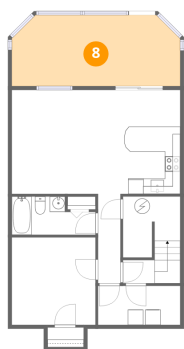


Max Dimensions: 2'11" x 11'7"  
Calculated Area: 34 sq. ft  
Included: Yes

Heated: Yes  
Finished: Yes  
Enclosed: Yes  
Contiguous: Yes  
Permitted: Yes  
Wet space: No  
Addition: No  
Conversion: No

### 8 Floor 1 - Screened Porch

---

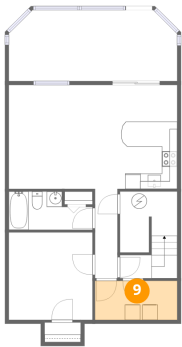


Max Dimensions: 21'11" x 9'3"  
Calculated Area: 193 sq. ft  
Included: No

Heated: No  
Finished: No  
Enclosed: No  
Contiguous: Yes  
Permitted: Yes  
Wet space: No  
Addition: No  
Conversion: No

3543 Londonderry Lane, Ruxton, Cave Spring, Roanoke,  
Roanoke County, Virginia, United States, 24018

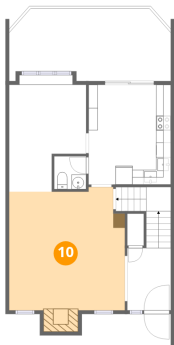
9 Floor 1 - Laundry



Max Dimensions: 10'8" x 5'1"  
Calculated Area: 54 sq. ft  
Included: Yes

Heated: Yes  
Finished: Yes  
Enclosed: Yes  
Contiguous: Yes  
Permitted: Yes  
Wet space: No  
Addition: No  
Conversion: No

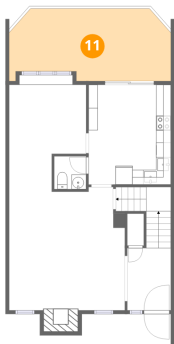
10 Floor 2 - Living Room



Max Dimensions: 15'8" x 16'0"  
Calculated Area: 263 sq. ft  
Included: Yes

Heated: Yes  
Finished: Yes  
Enclosed: Yes  
Contiguous: Yes  
Permitted: Yes  
Wet space: No  
Addition: No  
Conversion: No

11 Floor 2 - Balcony



Max Dimensions: 21'10" x 9'9"  
Calculated Area: 195 sq. ft  
Included: No

Heated: No  
Finished: No  
Enclosed: No  
Contiguous: Yes  
Permitted: Yes  
Wet space: No  
Addition: No  
Conversion: No



3543 Londonderry Lane, Ruxton, Cave Spring, Roanoke,  
Roanoke County, Virginia, United States, 24018

12 Floor 2 - Dining Area



Max Dimensions: 10'5" x 10'8"  
Calculated Area: 107 sq. ft  
Included: Yes

Heated: Yes  
Finished: Yes  
Enclosed: Yes  
Contiguous: Yes  
Permitted: Yes  
Wet space: No  
Addition: No  
Conversion: No

13 Floor 2 - Foyer



Max Dimensions: 5'11" x 16'8"  
Calculated Area: 91 sq. ft  
Included: Yes

Heated: Yes  
Finished: Yes  
Enclosed: Yes  
Contiguous: Yes  
Permitted: Yes  
Wet space: No  
Addition: No  
Conversion: No

14 Floor 2 - WC

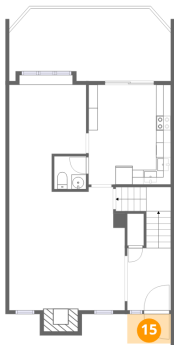


Max Dimensions: 4'4" x 4'5"  
Calculated Area: 19 sq. ft  
Included: Yes

Heated: Yes  
Finished: Yes  
Enclosed: Yes  
Contiguous: Yes  
Permitted: Yes  
Wet space: Yes  
Addition: No  
Conversion: No

3543 Londonderry Lane, Ruxton, Cave Spring, Roanoke,  
Roanoke County, Virginia, United States, 24018

15 Floor 2 - Porch



Max Dimensions: 5'11" x 4'0"  
Calculated Area: 24 sq. ft  
Included: No

Heated: No  
Finished: No  
Enclosed: No  
Contiguous: Yes  
Permitted: Yes  
Wet space: No  
Addition: No  
Conversion: No

16 Floor 2 - Kitchen



Max Dimensions: 11'2" x 13'6"  
Calculated Area: 151 sq. ft  
Included: Yes

Heated: Yes  
Finished: Yes  
Enclosed: Yes  
Contiguous: Yes  
Permitted: Yes  
Wet space: No  
Addition: No  
Conversion: No

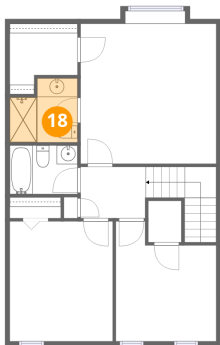
17 Floor 2 - Hall



Max Dimensions: 5'9" x 5'1"  
Calculated Area: 30 sq. ft  
Included: Yes

Heated: Yes  
Finished: Yes  
Enclosed: Yes  
Contiguous: Yes  
Permitted: Yes  
Wet space: No  
Addition: No  
Conversion: No

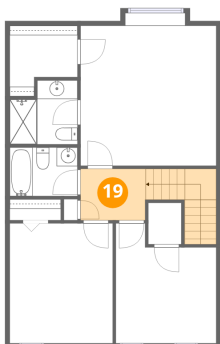
18 Floor 3 - Bath



Max Dimensions: 7'2" x 6'9"  
Calculated Area: 43 sq. ft  
Included: Yes

Heated: Yes  
Finished: Yes  
Enclosed: Yes  
Contiguous: Yes  
Permitted: Yes  
Wet space: Yes  
Addition: No  
Conversion: No

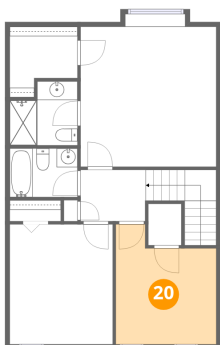
19 Floor 3 - Hall



Max Dimensions: 6'11" x 5'5"  
Calculated Area: 78 sq. ft  
Included: Yes

Heated: Yes  
Finished: Yes  
Enclosed: Yes  
Contiguous: Yes  
Permitted: Yes  
Wet space: No  
Addition: No  
Conversion: No

20 Floor 3 - Bedroom

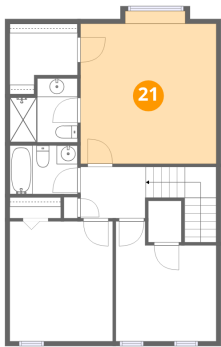


Max Dimensions: 10'8" x 12'9"  
Calculated Area: 116 sq. ft  
Included: Yes

Heated: Yes  
Finished: Yes  
Enclosed: Yes  
Contiguous: Yes  
Permitted: Yes  
Wet space: No  
Addition: No  
Conversion: No

3543 Londonderry Lane, Ruxton, Cave Spring, Roanoke,  
Roanoke County, Virginia, United States, 24018

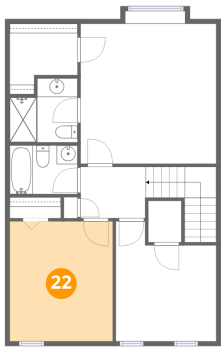
21 Floor 3 - Primary Bedroom



Max Dimensions: 14'5" x 16'2"  
Calculated Area: 222 sq. ft  
Included: Yes

Heated: Yes  
Finished: Yes  
Enclosed: Yes  
Contiguous: Yes  
Permitted: Yes  
Wet space: No  
Addition: No  
Conversion: No

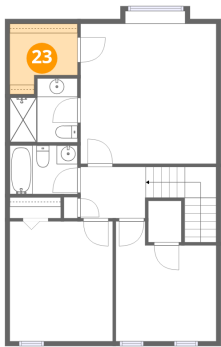
22 Floor 3 - Bedroom



Max Dimensions: 10'11" x 12'9"  
Calculated Area: 139 sq. ft  
Included: Yes

Heated: Yes  
Finished: Yes  
Enclosed: Yes  
Contiguous: Yes  
Permitted: Yes  
Wet space: No  
Addition: No  
Conversion: No

23 Floor 3 - W.I.C.

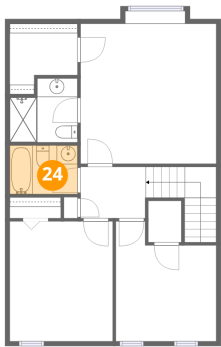


Max Dimensions: 7'2" x 7'6"  
Calculated Area: 44 sq. ft  
Included: Yes

Heated: Yes  
Finished: Yes  
Enclosed: Yes  
Contiguous: Yes  
Permitted: Yes  
Wet space: No  
Addition: No  
Conversion: No

3543 Londonderry Lane, Ruxton, Cave Spring, Roanoke,  
Roanoke County, Virginia, United States, 24018

**24** Floor 3 - Bath



Max Dimensions: 7'2" x 5'2"  
Calculated Area: 37 sq. ft  
Included: Yes

Heated: Yes  
Finished: Yes  
Enclosed: Yes  
Contiguous: Yes  
Permitted: Yes  
Wet space: Yes  
Addition: No  
Conversion: No