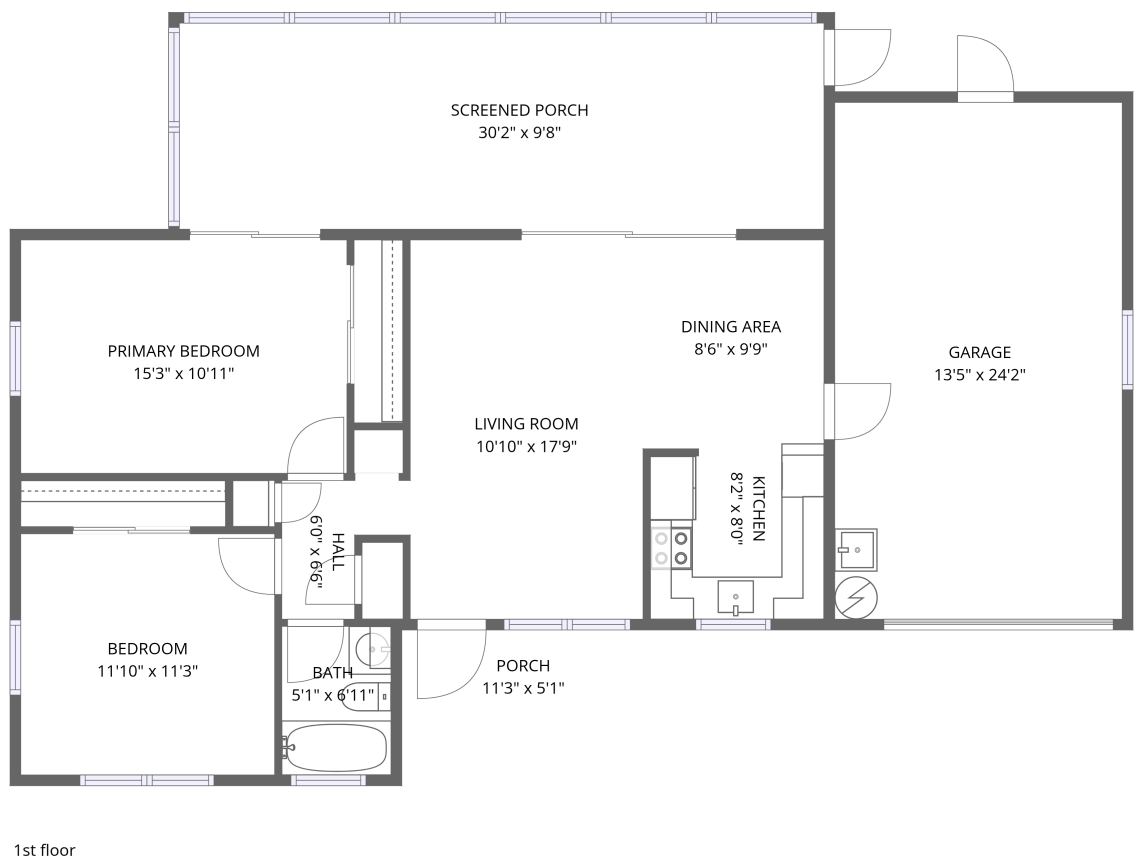


Home data report

9828 49th Avenue North, Bay Pines, St. Petersburg, Pinellas County, Florida, United States, 33708



Total Area: 792 sq. ft

1st Floor: 792 sq. ft

Excluded: Garage 325 sq. ft, Screened porch 290 sq. ft, Porch 58 sq. ft, Walls: 116 sq. ft

Property summary

1 Floors

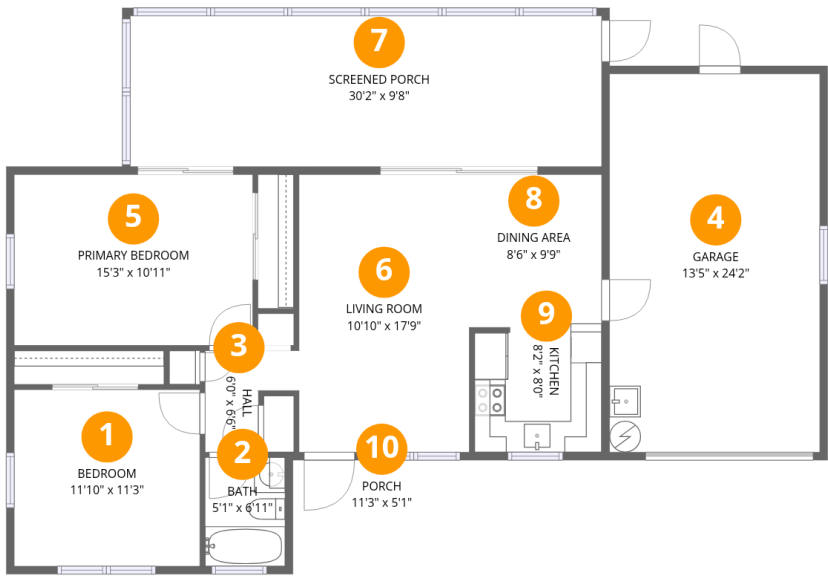
2 Bedrooms

1 Bathrooms

1 Garages

Home data report

9828 49th Avenue North, Bay Pines, St. Petersburg, Pinellas County, Florida, United States, 33708



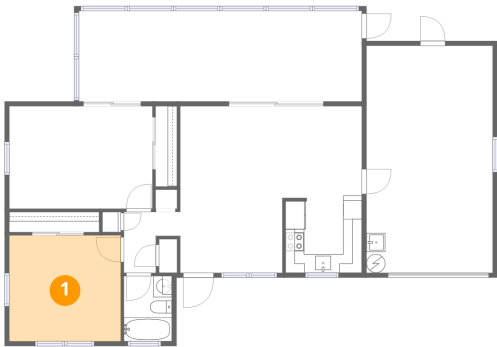
Room dimensions

Floor 1 Total:792sqft Excluded: 673sqft

#		Dimensions	sqft	Counted as living area
1	Bedroom	11'10" x 11'3"	134 sq. ft	Yes
2	Bath	5'1" x 6'11"	36 sq. ft	Yes
3	Hall	6'0" x 6'6"	39 sq. ft	Yes
4	Garage	13'5" x 24'2"	325 sq. ft	No
5	Primary Bedroom	15'3" x 10'11"	166 sq. ft	Yes
6	Living Room	10'10" x 17'9"	193 sq. ft	Yes
7	Screened Porch	30'2" x 9'8"	290 sq. ft	No
8	Dining Area	8'6" x 9'9"	83 sq. ft	Yes
9	Kitchen	8'2" x 8'0"	65 sq. ft	Yes
10	Porch	11'3" x 5'1"	58 sq. ft	No

9828 49th Avenue North, Bay Pines, St. Petersburg, Pinellas
County, Florida, United States, 33708

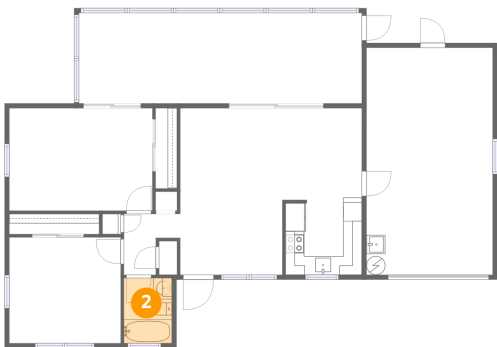
1 Floor 1 - Bedroom



Dimensions: 11'10" x 11'3"
Area: 134 sq. ft
Counted as living area: Yes

Heated: Yes
Finished: Yes
Enclosed: Yes
Contiguous: Yes
Permitted: Yes
Wet space: No
Addition: No
Conversion: No

2 Floor 1 - Bath

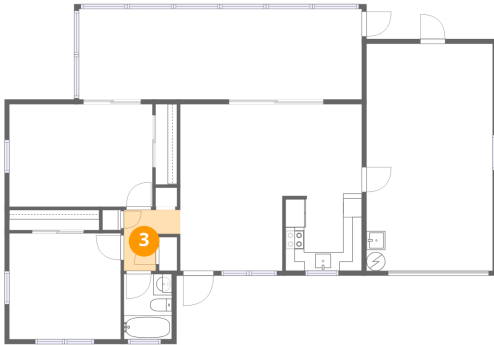


Dimensions: 5'1" x 6'11"
Area: 36 sq. ft
Counted as living area: Yes

Heated: Yes
Finished: Yes
Enclosed: Yes
Contiguous: Yes
Permitted: Yes
Wet space: Yes
Addition: No
Conversion: No

9828 49th Avenue North, Bay Pines, St. Petersburg, Pinellas
County, Florida, United States, 33708

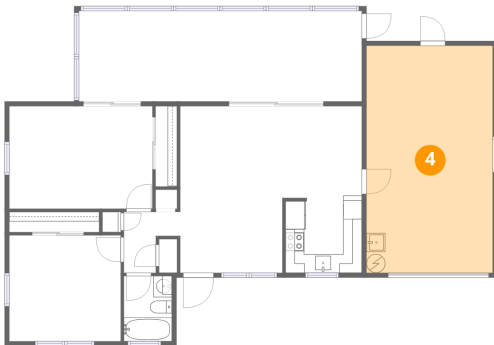
3 Floor 1 - Hall



Dimensions: 6'0" x 6'6"
Area: 39 sq. ft
Counted as living area: Yes

Heated: Yes
Finished: Yes
Enclosed: Yes
Contiguous: Yes
Permitted: Yes
Wet space: No
Addition: No
Conversion: No

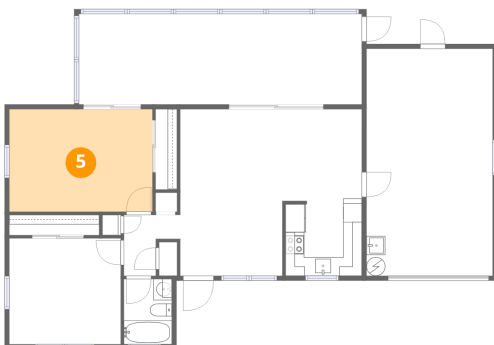
4 Floor 1 - Garage



Dimensions: 13'5" x 24'2"
Area: 325 sq. ft
Counted as living area: No

Heated: No
Finished: No
Enclosed: Yes
Contiguous: Yes
Permitted: Yes
Wet space: No
Addition: No
Conversion: No

5 Floor 1 - Primary Bedroom

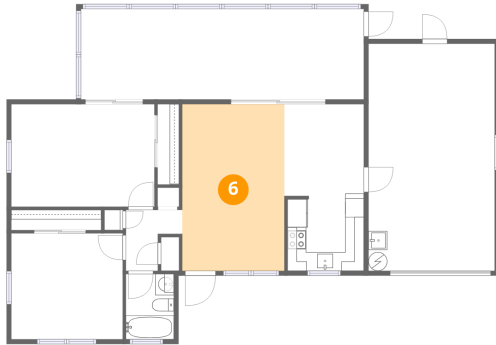


Dimensions: 15'3" x 10'11"
Area: 166 sq. ft
Counted as living area: Yes

Heated: Yes
Finished: Yes
Enclosed: Yes
Contiguous: Yes
Permitted: Yes
Wet space: No
Addition: No
Conversion: No

9828 49th Avenue North, Bay Pines, St. Petersburg, Pinellas
County, Florida, United States, 33708

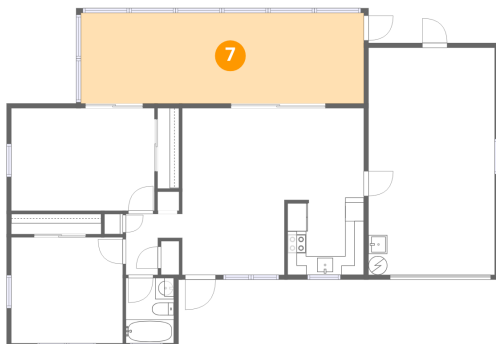
6 Floor 1 - Living Room



Dimensions: 10'10" x 17'9"
Area: 193 sq. ft
Counted as living area: Yes

Heated: Yes
Finished: Yes
Enclosed: Yes
Contiguous: Yes
Permitted: Yes
Wet space: No
Addition: No
Conversion: No

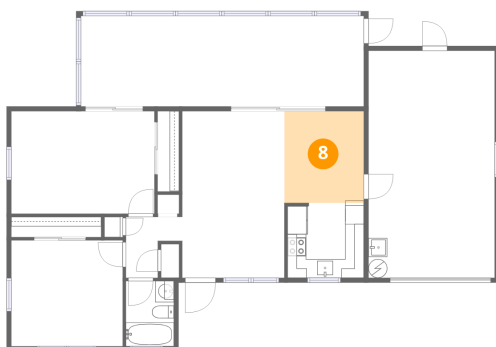
7 Floor 1 - Screened Porch



Dimensions: 30'2" x 9'8"
Area: 290 sq. ft
Counted as living area: No

Heated: No
Finished: No
Enclosed: No
Contiguous: Yes
Permitted: Yes
Wet space: No
Addition: No
Conversion: No

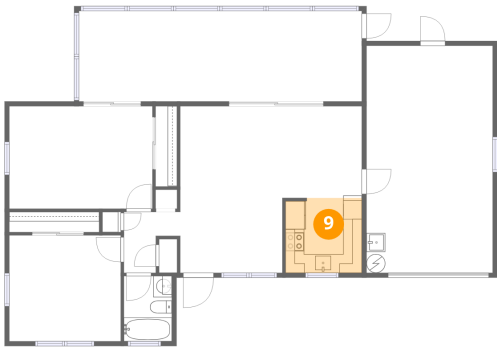
8 Floor 1 - Dining Area



Dimensions: 8'6" x 9'9"
Area: 83 sq. ft
Counted as living area: Yes

Heated: Yes
Finished: Yes
Enclosed: Yes
Contiguous: Yes
Permitted: Yes
Wet space: No
Addition: No
Conversion: No

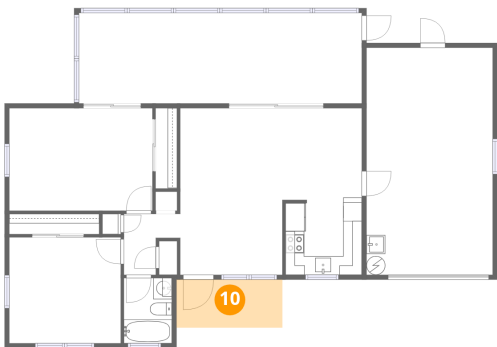
9 Floor 1 - Kitchen



Dimensions: 8'2" x 8'0"
Area: 65 sq. ft
Counted as living area: Yes

Heated: Yes
Finished: Yes
Enclosed: Yes
Contiguous: Yes
Permitted: Yes
Wet space: No
Addition: No
Conversion: No

10 Floor 1 - Porch



Dimensions: 11'3" x 5'1"
Area: 58 sq. ft
Counted as living area: No

Heated: No
Finished: No
Enclosed: No
Contiguous: Yes
Permitted: Yes
Wet space: No
Addition: No
Conversion: No