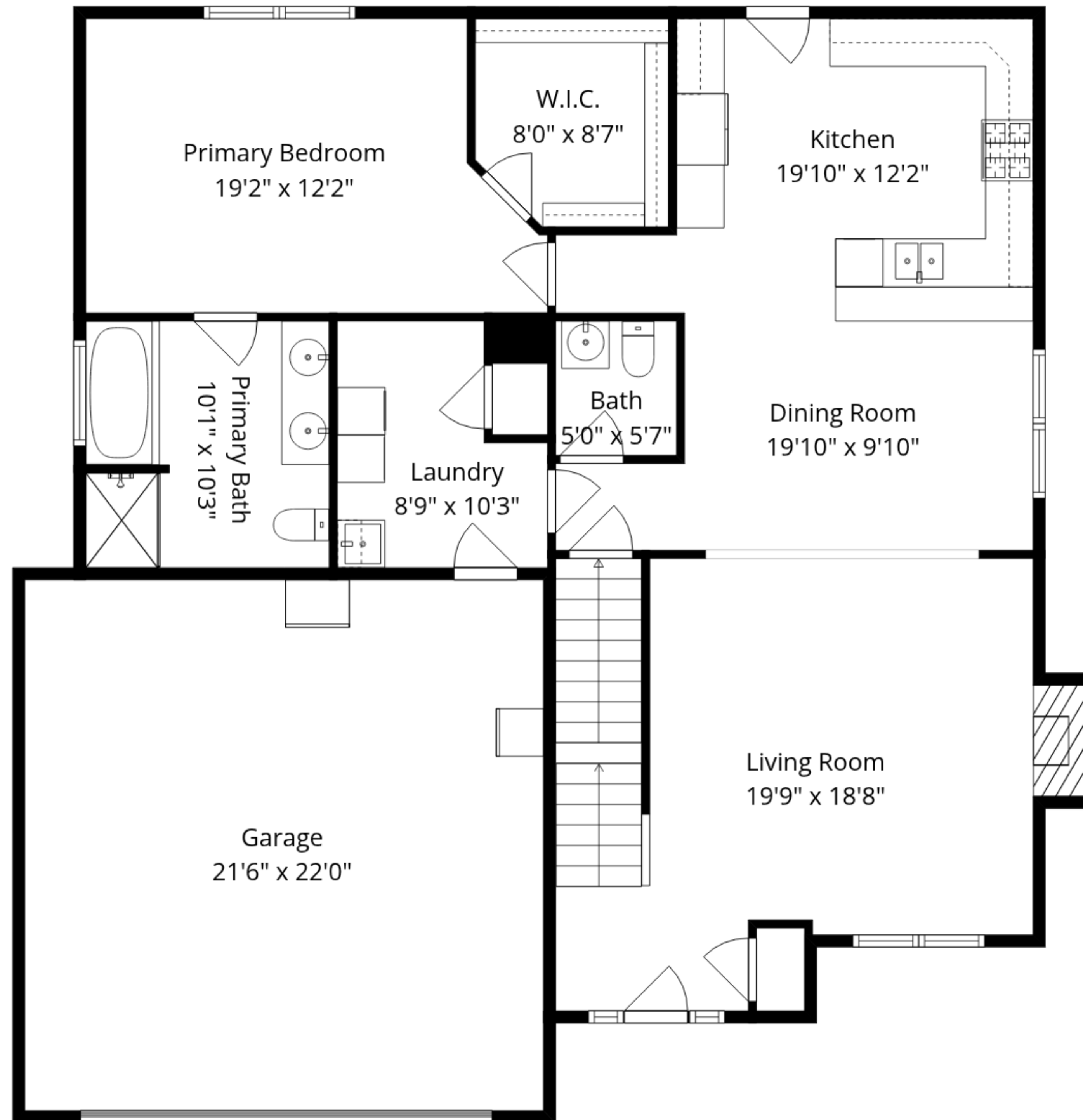


Basement
27'6" x 22'9"

Recreation Room
19'10" x 41'2"

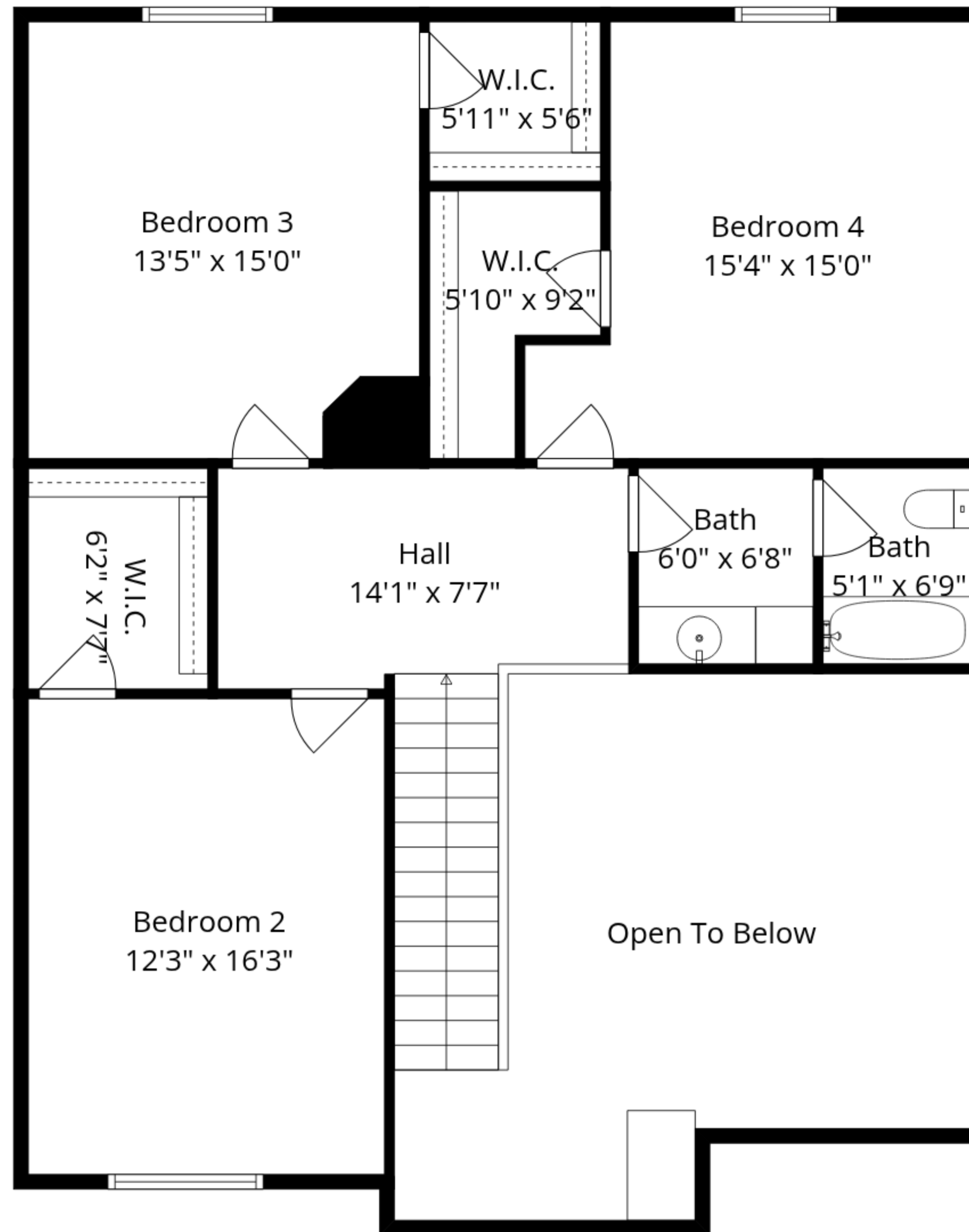
Total GLA: 2356 sq. ft | Total: 4189 sq. ft
Lower floor: (Excluded areas 1322 sq. ft)
Main floor: 1309 sq. ft (Excluded areas 511 sq. ft)
Upper floor: 1047 sq. ft (Excluded areas 309 sq. ft)

Sizes And Dimensions Are Approximate. Actual May Vary.



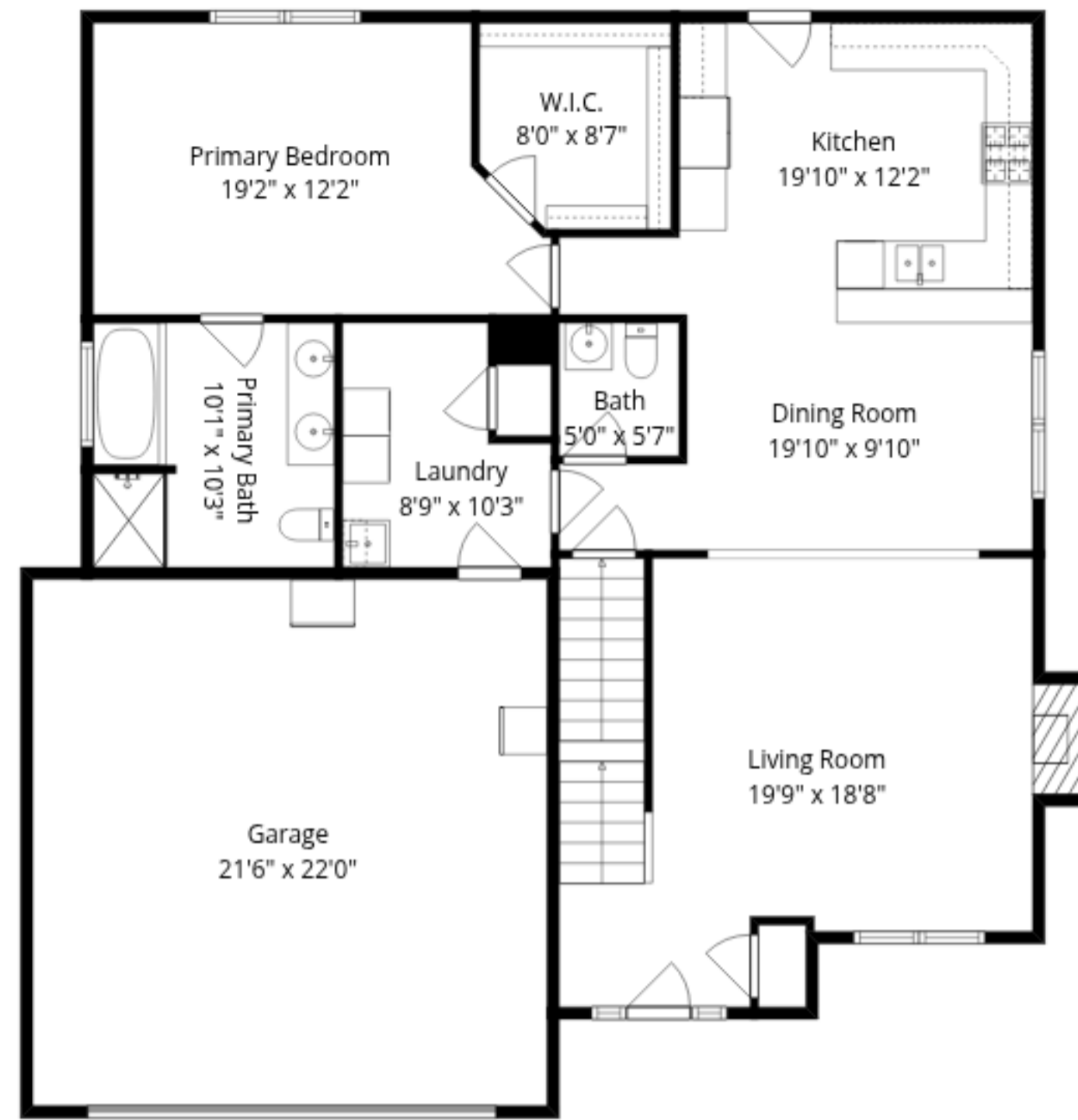
Total GLA: 2356 sq. ft | Total: 4189 sq. ft
 Lower floor: (Excluded areas 1322 sq. ft)
 Main floor: 1309 sq. ft (Excluded areas 511 sq. ft)
 Upper floor: 1047 sq. ft (Excluded areas 309 sq. ft)

Sizes And Dimensions Are Approximate. Actual May Vary.

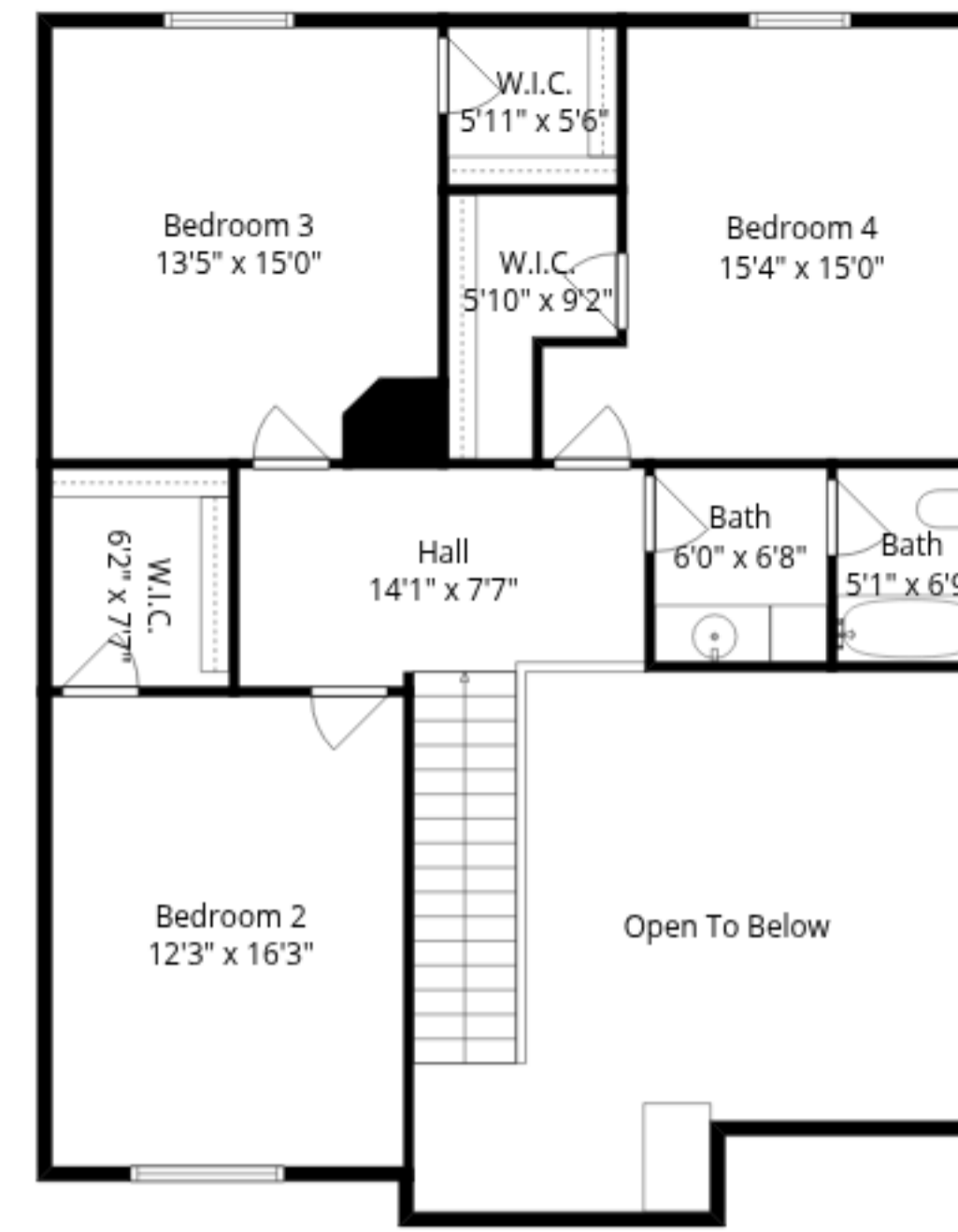


Total GLA: 2356 sq. ft | Total: 4189 sq. ft
 Lower floor: (Excluded areas 1322 sq. ft)
 Main floor: 1309 sq. ft (Excluded areas 511 sq. ft)
 Upper floor: 1047 sq. ft (Excluded areas 309 sq. ft)

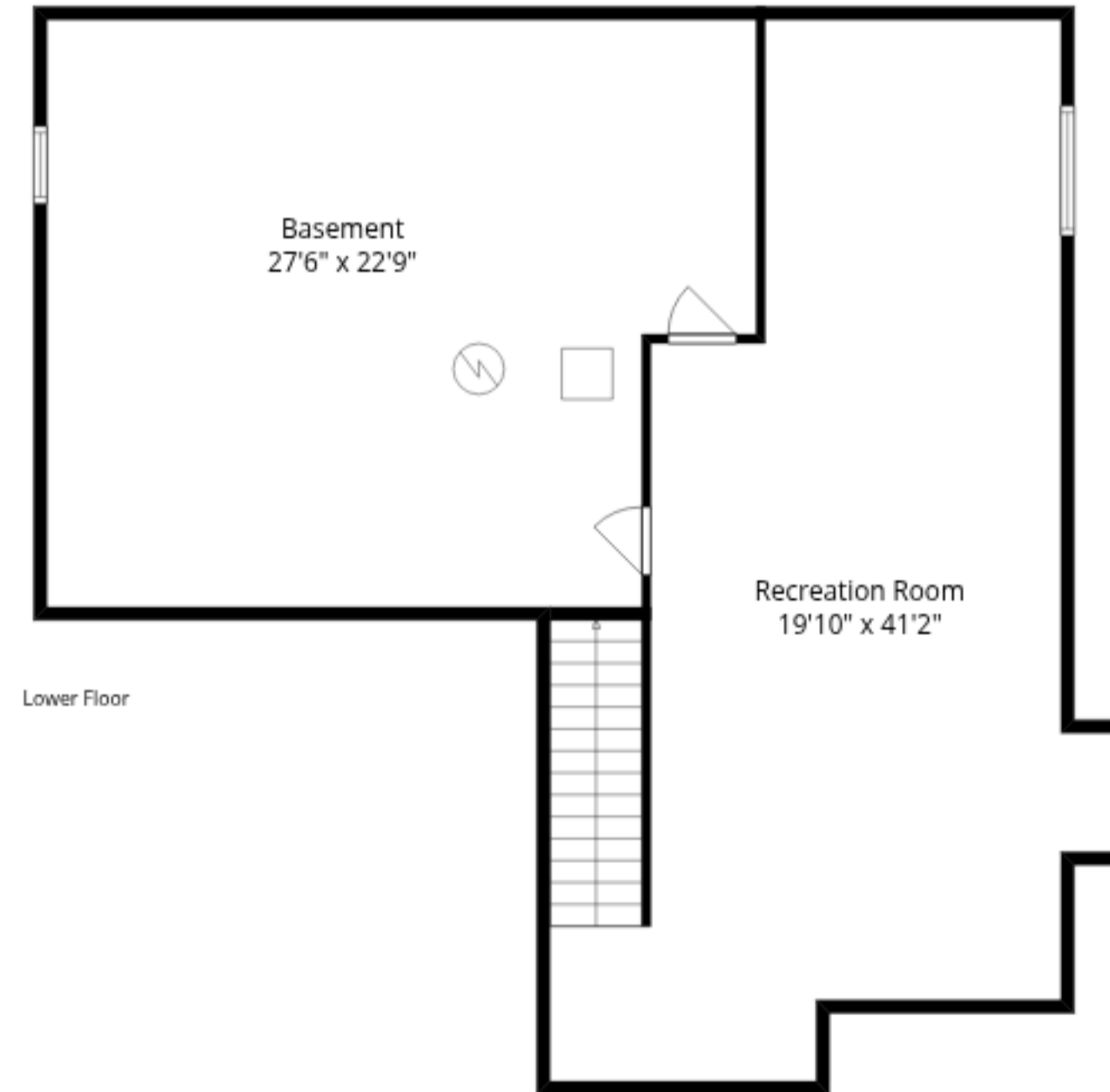
Sizes And Dimensions Are Approximate. Actual May Vary.



Main Floor



Upper Floor



Lower Floor

Total GLA: 2356 sq. ft | Total: 4189 sq. ft
 Lower floor: (Excluded areas 1322 sq. ft)
 Main floor: 1309 sq. ft (Excluded areas 511 sq. ft)
 Upper floor: 1047 sq. ft (Excluded areas 309 sq. ft)

Sizes And Dimensions Are Approximate. Actual May Vary.