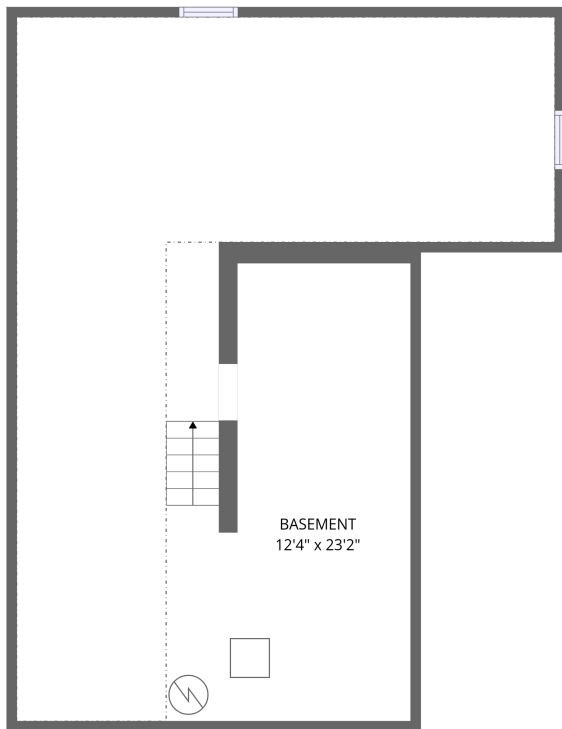
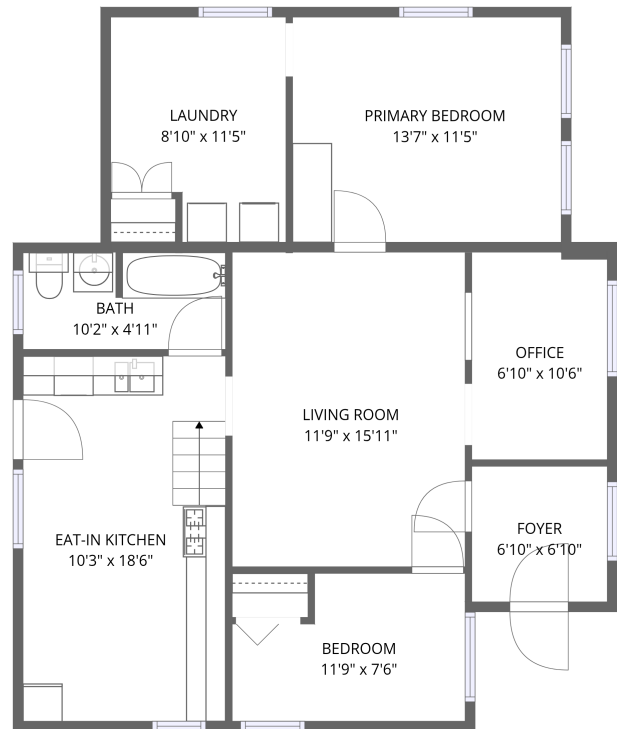


Home report

271 North Smith Street, Light of the Community, Aurora, Kane County, Illinois, United States, 60505



FLOOR 1



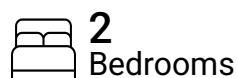
FLOOR 2

Total Area: 927 sq. ft

Below Ground: 0 sq. ft, Floor 2: 927 sq. ft

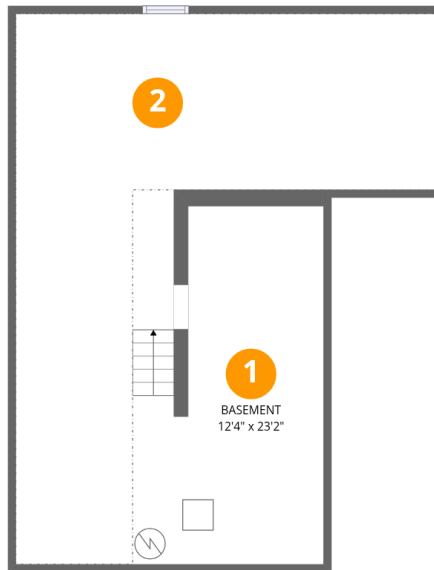
Excluded: Low ceiling 502 sq. ft, Basement 290 sq. ft, Walls: 130 sq. ft

Property summary



Home report

271 North Smith Street, Light of the Community, Aurora, Kane County, Illinois, United States, 60505



Room dimensions

Floor 1 Below ground

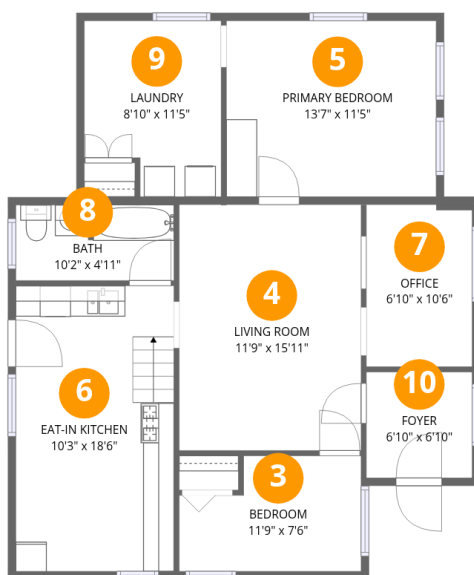
Total:0sqft

Excluded: 792sqft

#		Max Dimensions	sqft	Included
1	Basement	12'4" x 23'2"	277 sq. ft	No
2	Crawl Space	27'2" x 35'7"	492 sq. ft	No

Home report

271 North Smith Street, Light of the Community, Aurora, Kane County, Illinois, United States, 60505



Room dimensions

Floor 2

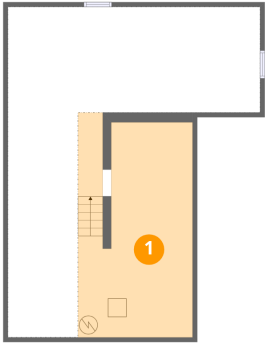
Total:927sqft

Excluded: 0sqft

#		Max Dimensions	sqft	Included
3	Bedroom	11'9" x 7'6"	77 sq. ft	Yes
4	Living Room	11'9" x 15'11"	187 sq. ft	Yes
5	Primary Bedroom	13'7" x 11'5"	155 sq. ft	Yes
6	Eat-in Kitchen	10'3" x 18'6"	189 sq. ft	Yes
7	Office	6'10" x 10'6"	74 sq. ft	Yes
8	Bath	10'2" x 4'11"	49 sq. ft	Yes
9	Laundry	8'10" x 11'5"	92 sq. ft	Yes
10	Foyer	6'10" x 6'10"	47 sq. ft	Yes

271 North Smith Street, Light of the Community, Aurora, Kane County, Illinois, United States, 60505

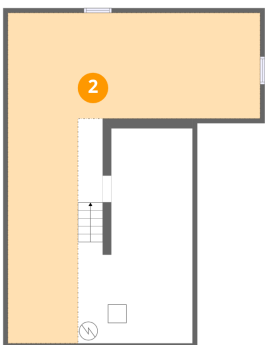
1 Floor 1 - Basement



Max Dimensions: 12'4" x 23'2"
Calculated Area: 277 sq. ft
Included: No

Heated: Yes
Finished: No
Enclosed: Yes
Contiguous: Yes
Permitted: Yes
Wet space: No
Addition: No
Conversion: No

2 Floor 1 - Crawl Space

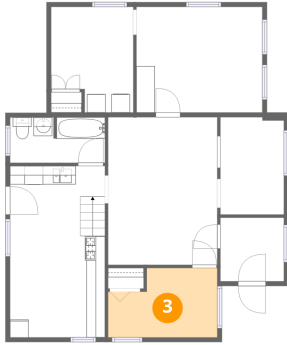


Max Dimensions: 27'2" x 35'7"
Calculated Area: 492 sq. ft
Included: No

Heated: No
Finished: No
Enclosed: No
Contiguous: Yes
Permitted: No
Wet space: No
Addition: No
Conversion: No

271 North Smith Street, Light of the Community, Aurora, Kane County, Illinois, United States, 60505

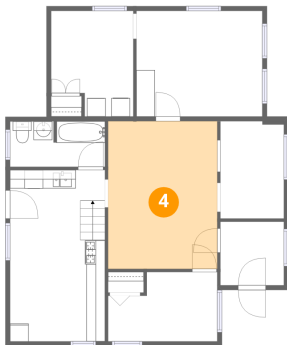
3 Floor 2 - Bedroom



Max Dimensions: 11'9" x 7'6"
Calculated Area: 77 sq. ft
Included: Yes

Heated: Yes
Finished: Yes
Enclosed: Yes
Contiguous: Yes
Permitted: Yes
Wet space: No
Addition: No
Conversion: No

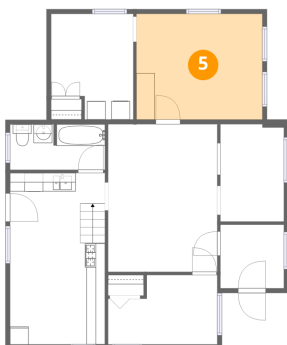
4 Floor 2 - Living Room



Max Dimensions: 11'9" x 15'11"
Calculated Area: 187 sq. ft
Included: Yes

Heated: Yes
Finished: Yes
Enclosed: Yes
Contiguous: Yes
Permitted: Yes
Wet space: No
Addition: No
Conversion: No

5 Floor 2 - Primary Bedroom

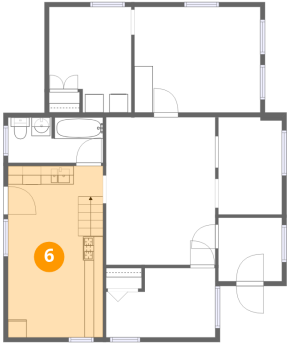


Max Dimensions: 13'7" x 11'5"
Calculated Area: 155 sq. ft
Included: Yes

Heated: Yes
Finished: Yes
Enclosed: Yes
Contiguous: Yes
Permitted: Yes
Wet space: No
Addition: No
Conversion: No

271 North Smith Street, Light of the Community, Aurora, Kane County, Illinois, United States, 60505

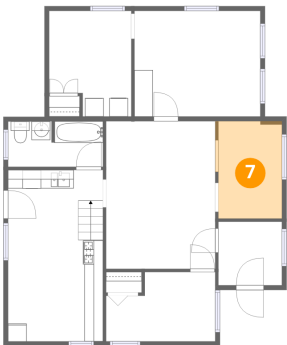
6 Floor 2 - Eat-in Kitchen



Max Dimensions: 10'3" x 18'6"
Calculated Area: 189 sq. ft
Included: Yes

Heated: Yes
Finished: Yes
Enclosed: Yes
Contiguous: Yes
Permitted: Yes
Wet space: No
Addition: No
Conversion: No

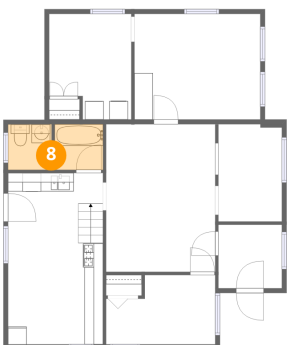
7 Floor 2 - Office



Max Dimensions: 6'10" x 10'6"
Calculated Area: 74 sq. ft
Included: Yes

Heated: Yes
Finished: Yes
Enclosed: Yes
Contiguous: Yes
Permitted: Yes
Wet space: No
Addition: No
Conversion: No

8 Floor 2 - Bath

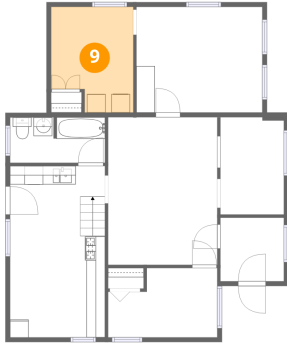


Max Dimensions: 10'2" x 4'11"
Calculated Area: 49 sq. ft
Included: Yes

Heated: Yes
Finished: Yes
Enclosed: Yes
Contiguous: Yes
Permitted: Yes
Wet space: Yes
Addition: No
Conversion: No

271 North Smith Street, Light of the Community, Aurora, Kane County, Illinois, United States, 60505

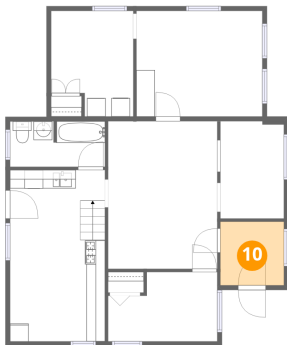
9 Floor 2 - Laundry



Max Dimensions: 8'10" x 11'5"
Calculated Area: 92 sq. ft
Included: Yes

Heated: Yes
Finished: Yes
Enclosed: Yes
Contiguous: Yes
Permitted: Yes
Wet space: No
Addition: No
Conversion: No

10 Floor 2 - Foyer



Max Dimensions: 6'10" x 6'10"
Calculated Area: 47 sq. ft
Included: Yes

Heated: Yes
Finished: Yes
Enclosed: Yes
Contiguous: Yes
Permitted: Yes
Wet space: No
Addition: No
Conversion: No