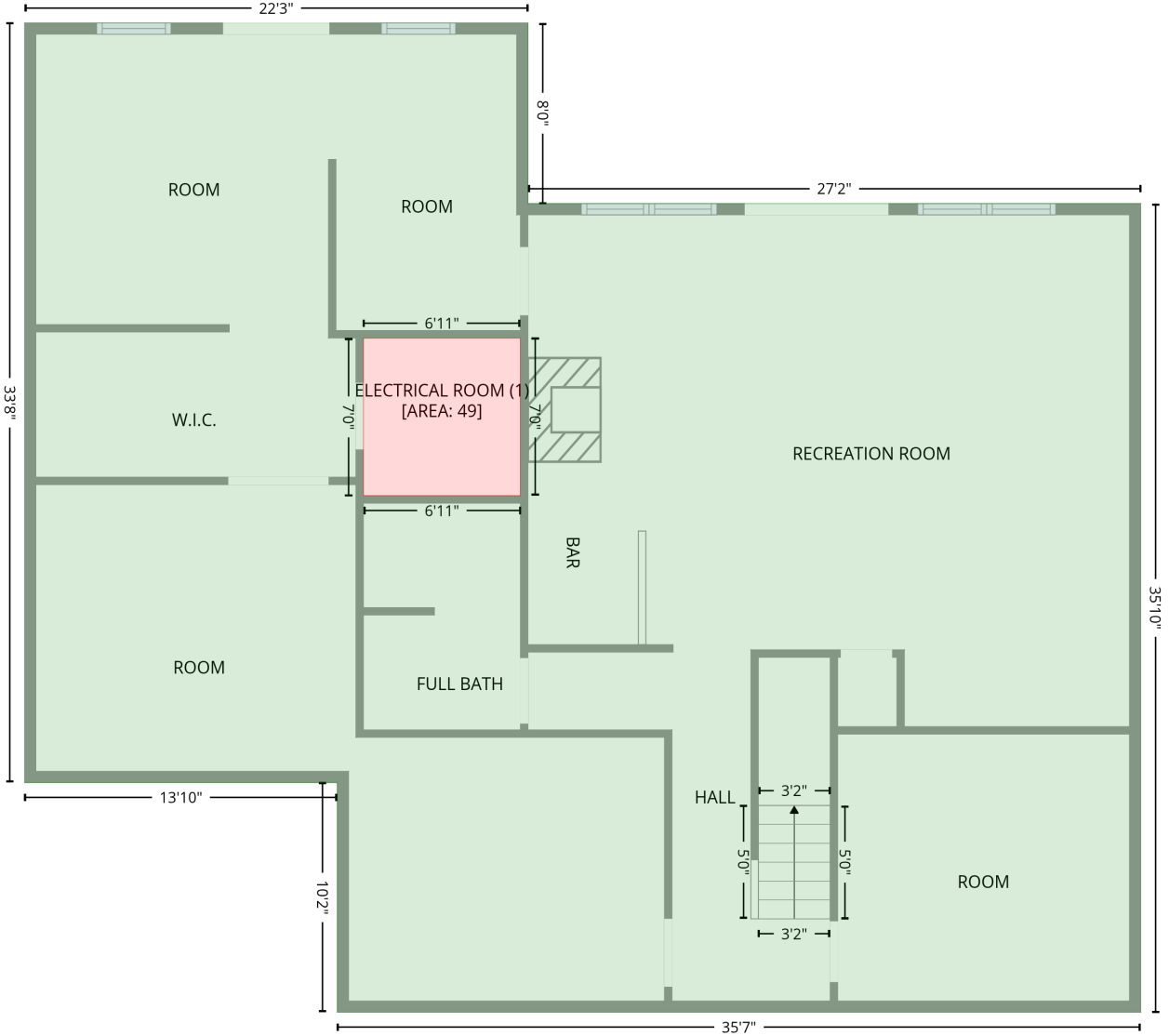


# 3820 8th St PI NW,Hickory,NC,US

Gross Living Area: 5022 sq. ft

## Level 1

1st floor  
[AREA: 1758]



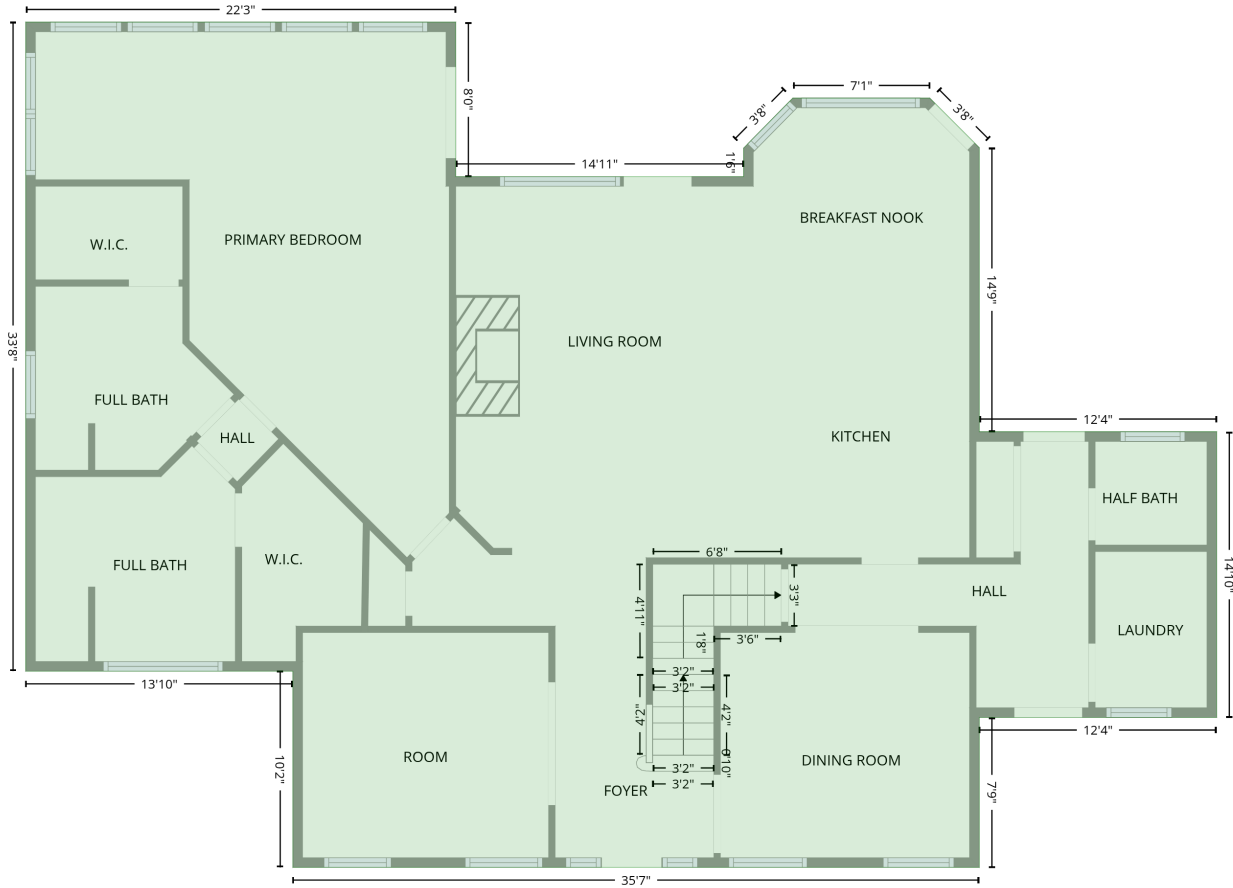
| Space                                | Area (sq. ft) | Calculation <small>Coordinate Polygon Area Algorithm using inches</small>  |
|--------------------------------------|---------------|--|
| 1st floor<br>(Living area)           | 1758          | $-\left((270.9 + 270.9) * (2.7 - 98.6) + (270.9 + 596.5) * (98.6 - 98.6) + (596.5 + 596.5) * (98.6 - 528.3) + (596.5 + 169.6) * (528.3 - 528.3) + (169.6 + 169.6) * (528.3 - 406.3) + (169.6 + 3.4) * (406.3 - 406.3) + (3.4 + 3.4) * (406.3 - 2.7) + (3.4 + 270.9) * (2.7 - 2.7)\right) * 0.5 * 0.00694 - \left((266.9 + 183.5) * (170.1 - 170.1) + (183.5 + 183.5) * (170.1 - 253.9) + (183.5 + 266.9) * (253.9 - 253.9) + (266.9 + 266.9) * (253.9 - 170.1)\right) * 0.5 * 0.00694$ |
| ELECTRICAL ROOM<br>(Non-living area) | 49            | $-\left((266.9 + 266.9) * (170.1 - 253.9) + (266.9 + 183.5) * (253.9 - 253.9) + (183.5 + 183.5) * (253.9 - 170.1) + (183.5 + 266.9) * (170.1 - 170.1)\right) * 0.5 * 0.00694$  |

# 3820 8th St PI NW,Hickory,NC,US

Gross Living Area: 5022 sq. ft

## Level 2

2nd floor  
[AREA: 2032]



| Space                      | Area (sq. ft) | Calculation  |
|----------------------------|---------------|--|
| 2nd floor<br>(Living area) | 2032          | Coordinate Polygon Area Algorithm using inches<br>$-((270.9 + 270.9) * (2.7 - 98.7) + (270.9 + 449.9) * (98.7 - 98.7) + (449.9 + 449.9) * (98.7 - 81) + (449.9 + 480.6) * (81 - 49.9) + (480.6 + 565.6) * (49.9 - 49.9) + (565.6 + 596.5) * (49.9 - 80.7) + (596.5 + 596.5) * (80.7 - 257.4) + (596.5 + 744.1) * (257.4 - 257.4) + (744.1 + 744.1) * (257.4 - 435) + (744.1 + 596.5) * (435 - 435) + (596.5 + 596.5) * (435 - 528.3) + (596.5 + 169.6) * (528.3 - 528.3) + (169.6 + 169.6) * (528.3 - 406.3) + (169.6 + 3.4) * (406.3 - 406.3) + (3.4 + 3.4) * (406.3 - 2.7) + (3.4 + 270.9) * (2.7 - 2.7)) * 0.5 * 0.00694$ |



# 3820 8th St PI NW,Hickory,NC,US

Gross Living Area: 5022 sq. ft

## Level 3

| Space                            | Area (sq. ft) | Calculation <small>Coordinate Polygon Area Algorithm using inches</small>   |
|----------------------------------|---------------|---|
| LOW CEILING<br>(Non-living area) | 50            | $-\left((596.5 + 596.5) * (503.2 - 528.3) + (596.5 + 310.5) * (528.3 - 528.3) + (310.5 + 310.5) * (528.3 - 503.2) + (310.5 + 596.5) * (503.2 - 503.2)\right) * 0.5 * 0.00694$   |
| LOW CEILING<br>(Non-living area) | 42            | $-\left((366.5 + 366.5) * (433.5 - 458.6) + (366.5 + 370.5) * (458.6 - 458.6) + (370.5 + 370.5) * (458.6 - 462.6) + (370.5 + 316.5) * (462.6 - 462.6) + (316.5 + 310.5) * (462.6 - 464.6) + (310.5 + 169.6) * (464.6 - 464.6) + (169.6 + 169.6) * (464.6 - 433.5) + (169.6 + 366.5) * (433.5 - 433.5)\right) * 0.5 * 0.00694$                     |
| LOW CEILING<br>(Non-living area) | 27            | $-\left((744.1 + 744.1) * (396.9 - 422.8) + (744.1 + 596.5) * (422.8 - 422.8) + (596.5 + 590.6) * (422.8 - 416.9) + (590.6 + 590.5) * (416.9 - 416.8) + (590.5 + 594.5) * (416.8 - 416.8) + (594.5 + 594.5) * (416.8 - 396.9) + (594.5 + 744.1) * (396.9 - 396.9)\right) * 0.5 * 0.00694$   |
| LOW CEILING<br>(Non-living area) | 33            | $-\left((731.5 + 731.5) * (311.3 - 345.7) + (731.5 + 594.5) * (345.7 - 345.7) + (594.5 + 594.5) * (345.7 - 317.3) + (594.5 + 596.5) * (317.3 - 311.3) + (596.5 + 731.5) * (311.3 - 311.3)\right) * 0.5 * 0.00694$   |
| ATTIC<br>(Non-living area)       | 112           | $-\left((596.5 + 596.5) * (431 - 503.2) + (596.5 + 310.5) * (503.2 - 503.2) + (310.5 + 310.5) * (503.2 - 464.6) + (310.5 + 316.5) * (464.6 - 462.6) + (316.5 + 435.4) * (462.6 - 462.6) + (435.4 + 435.4) * (462.6 - 435) + (435.4 + 590.5) * (435 - 435) + (590.5 + 590.5) * (435 - 431) + (590.5 + 596.5) * (431 - 431)\right) * 0.5 * 0.00694$ |