

Home report

3215 Allendale Street Southwest, South Roanoke, Roanoke,  
Roanoke city, Virginia, United States, 24014



Total Area: 4316 sq. ft

Floor 1: 881 sq. ft, Floor 2: 436 sq. ft, Floor 3: 1516 sq. ft, Floor 4: 1483 sq. ft

Excluded: Utility 63 sq. ft, Basement 427 sq. ft, Storage 79 sq. ft, Patio 491 sq. ft, Deck 581 sq. ft, Garage 599 sq. ft, Porch 89 sq. ft, Fireplace 20 sq. ft, Walls: 366 sq. ft

Property summary

 **4** Floors

 **4** Bedrooms

 **4** Bathrooms

Home report

**3215 Allendale Street Southwest, South Roanoke, Roanoke,  
Roanoke city, Virginia, United States, 24014**



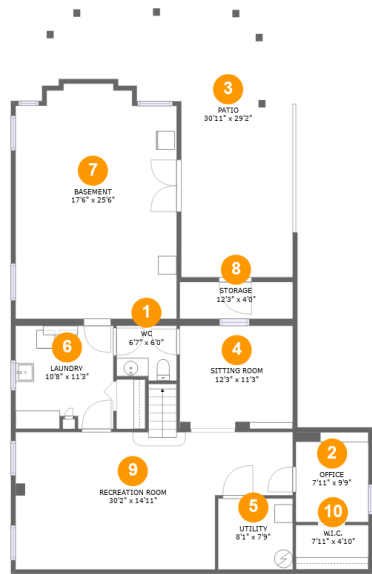
**2**  
Half baths



**1**  
Garages

Home report

3215 Allendale Street Southwest, South Roanoke, Roanoke, Roanoke city, Virginia, United States, 24014



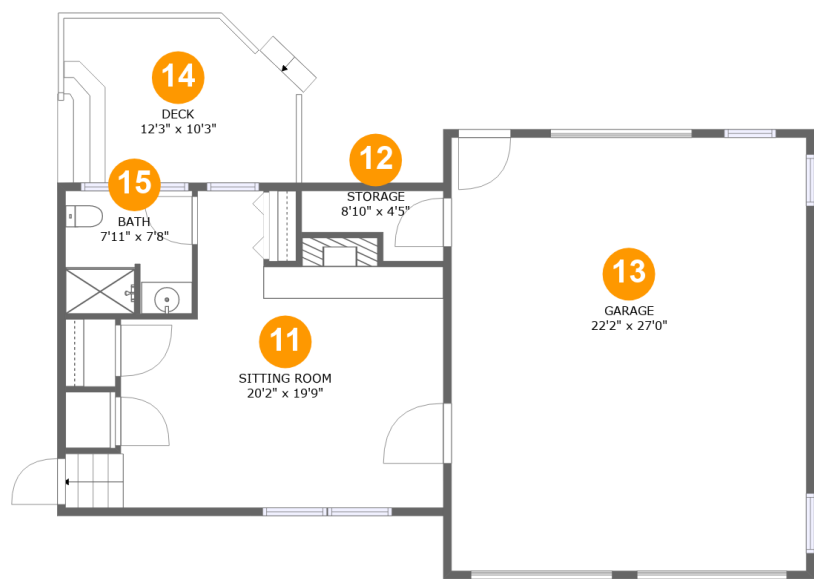
Room dimensions

Floor 1 Total:881sqft Excluded: 1030sqft

#		Max Dimensions	sqft	Included
1	WC	6'7" x 6'0"	37 sq. ft	Yes
2	Office	7'11" x 9'9"	77 sq. ft	Yes
3	Patio	30'11" x 29'2"	491 sq. ft	No
4	Sitting Room	12'3" x 11'3"	138 sq. ft	Yes
5	Utility	8'1" x 7'9"	63 sq. ft	No
6	Laundry	10'8" x 11'3"	116 sq. ft	Yes
7	Basement	17'6" x 25'6"	425 sq. ft	No
8	Storage	12'3" x 4'0"	49 sq. ft	No
9	Recreation Room	30'2" x 14'11"	398 sq. ft	Yes
10	W.I.C.	7'11" x 4'10"	38 sq. ft	Yes

Home report

3215 Allendale Street Southwest, South Roanoke, Roanoke,  
Roanoke city, Virginia, United States, 24014



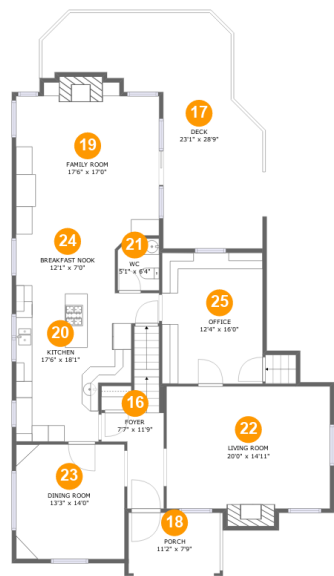
Room dimensions

Floor 2 Total:436sqft    Excluded: 777sqft

#		Max Dimensions	sqft	Included
11	Sitting Room	20'2" x 19'9"	327 sq. ft	Yes
12	Storage	8'10" x 4'5"	30 sq. ft	No
13	Garage	22'2" x 27'0"	599 sq. ft	No
14	Deck	12'3" x 10'3"	148 sq. ft	No
15	Bath	7'11" x 7'8"	60 sq. ft	Yes

Home report

3215 Allendale Street Southwest, South Roanoke, Roanoke,  
Roanoke city, Virginia, United States, 24014



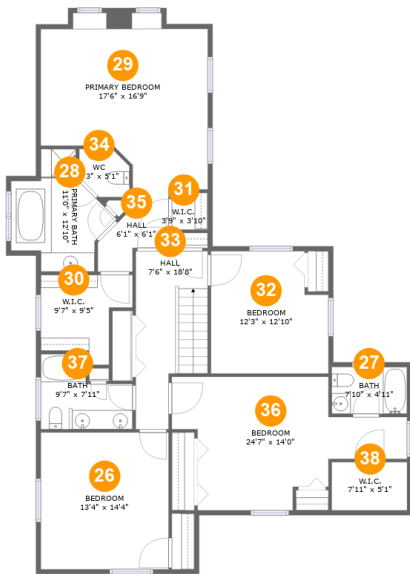
Room dimensions

Floor 3 Total:1516sqft   Excluded: 542sqft

#		Max Dimensions	sqft	Included
16	Foyer	7'7" x 11'9"	97 sq. ft	Yes
17	Deck	23'1" x 28'9"	433 sq. ft	No
18	Porch	11'2" x 7'9"	89 sq. ft	No
19	Family Room	17'6" x 17'0"	317 sq. ft	Yes
20	Kitchen	17'6" x 18'1"	239 sq. ft	Yes
21	WC	5'1" x 6'4"	31 sq. ft	Yes
22	Living Room	20'0" x 14'11"	310 sq. ft	Yes
23	Dining Room	13'3" x 14'0"	185 sq. ft	Yes
24	Breakfast Nook	12'1" x 7'0"	86 sq. ft	Yes
25	Office	12'4" x 16'0"	197 sq. ft	Yes

Home report

3215 Allendale Street Southwest, South Roanoke, Roanoke,  
Roanoke city, Virginia, United States, 24014



Room dimensions

Floor 4 Total:1483sqft   Excluded: 0sqft

#		Max Dimensions	sqft	Included
26	Bedroom	13'4" x 14'4"	191 sq. ft	Yes
27	Bath	7'10" x 4'11"	39 sq. ft	Yes
28	Primary Bath	11'0" x 12'10"	93 sq. ft	Yes
29	Primary Bedroom	17'6" x 16'9"	267 sq. ft	Yes
30	W.I.C.	9'7" x 9'5"	68 sq. ft	Yes
31	W.I.C.	3'9" x 3'10"	15 sq. ft	Yes
32	Bedroom	12'3" x 12'10"	146 sq. ft	Yes
33	Hall	7'6" x 18'8"	117 sq. ft	Yes
34	WC	5'3" x 5'1"	23 sq. ft	Yes
35	Hall	6'1" x 6'1"	41 sq. ft	Yes
36	Bedroom	24'7" x 14'0"	233 sq. ft	Yes

Home report

3215 Allendale Street Southwest, South Roanoke, Roanoke,  
Roanoke city, Virginia, United States, 24014

#		Max Dimensions	sqft	Included
37	Bath	9'7" x 7'11"	60 sq. ft	Yes
38	W.I.C.	7'11" x 5'1"	40 sq. ft	Yes

3215 Allendale Street Southwest, South Roanoke, Roanoke,  
Roanoke city, Virginia, United States, 24014

1 Floor 1 - WC



Max Dimensions: 6'7" x 6'0"  
Calculated Area: 37 sq. ft  
Included: Yes

Heated: Yes  
Finished: Yes  
Enclosed: Yes  
Contiguous: Yes  
Permitted: Yes  
Wet space: Yes  
Addition: No  
Conversion: No

2 Floor 1 - Office



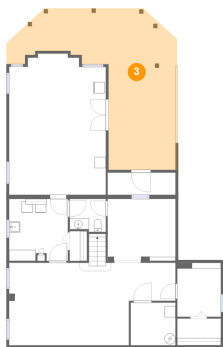
Max Dimensions: 7'11" x 9'9"  
Calculated Area: 77 sq. ft  
Included: Yes

Heated: Yes  
Finished: Yes  
Enclosed: Yes  
Contiguous: Yes  
Permitted: Yes  
Wet space: No  
Addition: No  
Conversion: No



3215 Allendale Street Southwest, South Roanoke, Roanoke,  
Roanoke city, Virginia, United States, 24014

3 Floor 1 - Patio



Max Dimensions: 30'11" x 29'2"  
Calculated Area: 491 sq. ft  
Included: No

Heated: No  
Finished: Yes  
Enclosed: No  
Contiguous: Yes  
Permitted: Yes  
Wet space: No  
Addition: No  
Conversion: No

4 Floor 1 - Sitting Room



Max Dimensions: 12'3" x 11'3"  
Calculated Area: 138 sq. ft  
Included: Yes

Heated: Yes  
Finished: Yes  
Enclosed: Yes  
Contiguous: Yes  
Permitted: Yes  
Wet space: No  
Addition: No  
Conversion: No

5 Floor 1 - Utility



Max Dimensions: 8'1" x 7'9"  
Calculated Area: 63 sq. ft  
Included: No

Heated: Yes  
Finished: No  
Enclosed: Yes  
Contiguous: Yes  
Permitted: Yes  
Wet space: No  
Addition: No  
Conversion: No

3215 Allendale Street Southwest, South Roanoke, Roanoke,  
Roanoke city, Virginia, United States, 24014

6 Floor 1 - Laundry



Max Dimensions: 10'8" x 11'3"  
Calculated Area: 116 sq. ft  
Included: Yes

Heated: Yes  
Finished: Yes  
Enclosed: Yes  
Contiguous: Yes  
Permitted: Yes  
Wet space: No  
Addition: No  
Conversion: No

7 Floor 1 - Basement



Max Dimensions: 17'6" x 25'6"  
Calculated Area: 425 sq. ft  
Included: No

Heated: Yes  
Finished: No  
Enclosed: Yes  
Contiguous: Yes  
Permitted: Yes  
Wet space: No  
Addition: No  
Conversion: No

8 Floor 1 - Storage



Max Dimensions: 12'3" x 4'0"  
Calculated Area: 49 sq. ft  
Included: No

Heated: No  
Finished: No  
Enclosed: No  
Contiguous: No  
Permitted: Yes  
Wet space: No  
Addition: No  
Conversion: No

3215 Allendale Street Southwest, South Roanoke, Roanoke,  
Roanoke city, Virginia, United States, 24014

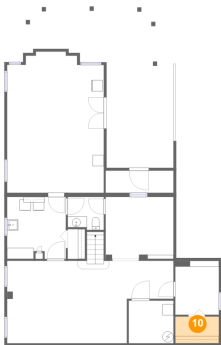
9 Floor 1 - Recreation Room



Max Dimensions: 30'2" x 14'11"  
Calculated Area: 398 sq. ft  
Included: Yes

Heated: Yes  
Finished: Yes  
Enclosed: Yes  
Contiguous: Yes  
Permitted: Yes  
Wet space: No  
Addition: No  
Conversion: No

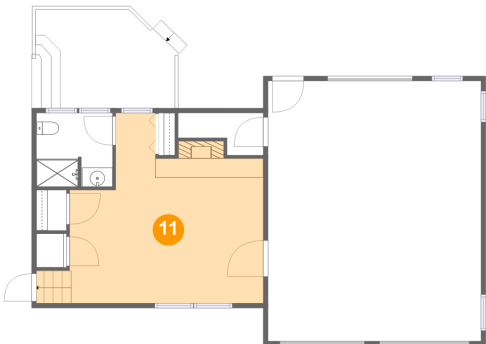
10 Floor 1 - W.I.C.



Max Dimensions: 7'11" x 4'10"  
Calculated Area: 38 sq. ft  
Included: Yes

Heated: Yes  
Finished: Yes  
Enclosed: Yes  
Contiguous: Yes  
Permitted: Yes  
Wet space: No  
Addition: No  
Conversion: No

11 Floor 2 - Sitting Room

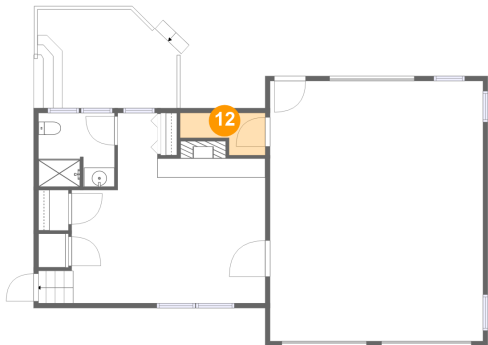


Max Dimensions: 20'2" x 19'9"  
Calculated Area: 327 sq. ft  
Included: Yes

Heated: Yes  
Finished: Yes  
Enclosed: Yes  
Contiguous: Yes  
Permitted: Yes  
Wet space: No  
Addition: No  
Conversion: No

3215 Allendale Street Southwest, South Roanoke, Roanoke,  
Roanoke city, Virginia, United States, 24014

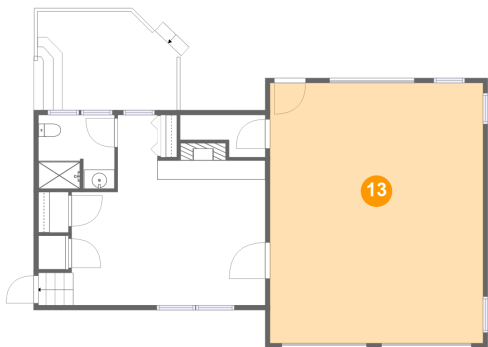
12 Floor 2 - Storage



Max Dimensions: 8'10" x 4'5"  
Calculated Area: 30 sq. ft  
Included: No

Heated: No  
Finished: No  
Enclosed: No  
Contiguous: Yes  
Permitted: Yes  
Wet space: No  
Addition: No  
Conversion: No

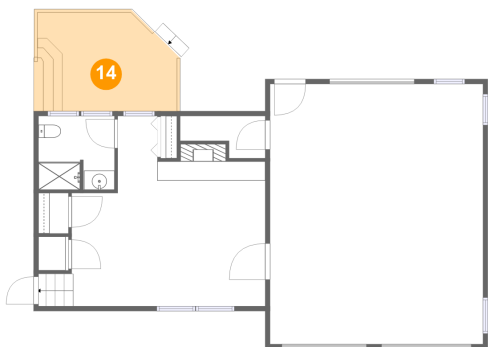
13 Floor 2 - Garage



Max Dimensions: 22'2" x 27'0"  
Calculated Area: 599 sq. ft  
Included: No

Heated: No  
Finished: No  
Enclosed: Yes  
Contiguous: Yes  
Permitted: Yes  
Wet space: No  
Addition: No  
Conversion: No

14 Floor 2 - Deck

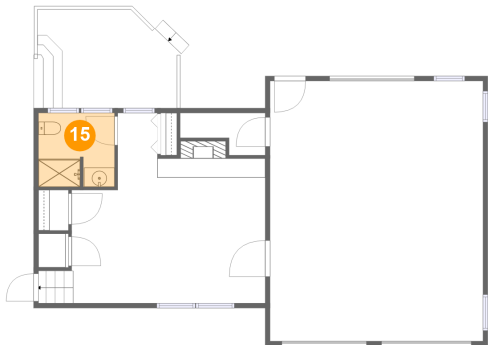


Max Dimensions: 12'3" x 10'3"  
Calculated Area: 148 sq. ft  
Included: No

Heated: No  
Finished: Yes  
Enclosed: No  
Contiguous: Yes  
Permitted: Yes  
Wet space: No  
Addition: No  
Conversion: No

3215 Allendale Street Southwest, South Roanoke, Roanoke,  
Roanoke city, Virginia, United States, 24014

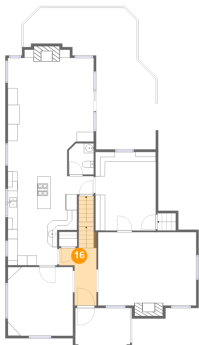
15 Floor 2 - Bath



Max Dimensions: 7'11" x 7'8"  
Calculated Area: 60 sq. ft  
Included: Yes

Heated: Yes  
Finished: Yes  
Enclosed: Yes  
Contiguous: Yes  
Permitted: Yes  
Wet space: Yes  
Addition: No  
Conversion: No

16 Floor 3 - Foyer



Max Dimensions: 7'7" x 11'9"  
Calculated Area: 97 sq. ft  
Included: Yes

Heated: Yes  
Finished: Yes  
Enclosed: Yes  
Contiguous: Yes  
Permitted: Yes  
Wet space: No  
Addition: No  
Conversion: No

17 Floor 3 - Deck



Max Dimensions: 23'1" x 28'9"  
Calculated Area: 433 sq. ft  
Included: No

Heated: No  
Finished: Yes  
Enclosed: No  
Contiguous: Yes  
Permitted: Yes  
Wet space: No  
Addition: No  
Conversion: No

3215 Allendale Street Southwest, South Roanoke, Roanoke,  
Roanoke city, Virginia, United States, 24014

18 Floor 3 - Porch



Max Dimensions: 11'2" x 7'9"  
Calculated Area: 89 sq. ft  
Included: No

Heated: No  
Finished: Yes  
Enclosed: No  
Contiguous: Yes  
Permitted: Yes  
Wet space: No  
Addition: No  
Conversion: No

19 Floor 3 - Family Room



Max Dimensions: 17'6" x 17'0"  
Calculated Area: 317 sq. ft  
Included: Yes

Heated: Yes  
Finished: Yes  
Enclosed: Yes  
Contiguous: Yes  
Permitted: Yes  
Wet space: No  
Addition: No  
Conversion: No

20 Floor 3 - Kitchen



Max Dimensions: 17'6" x 18'1"  
Calculated Area: 239 sq. ft  
Included: Yes

Heated: Yes  
Finished: Yes  
Enclosed: Yes  
Contiguous: Yes  
Permitted: Yes  
Wet space: No  
Addition: No  
Conversion: No

3215 Allendale Street Southwest, South Roanoke, Roanoke,  
Roanoke city, Virginia, United States, 24014

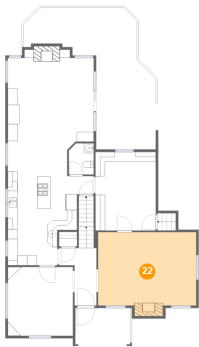
21 Floor 3 - WC



Max Dimensions: 5'1" x 6'4"  
Calculated Area: 31 sq. ft  
Included: Yes

Heated: Yes  
Finished: Yes  
Enclosed: Yes  
Contiguous: Yes  
Permitted: Yes  
Wet space: Yes  
Addition: No  
Conversion: No

22 Floor 3 - Living Room



Max Dimensions: 20'0" x 14'11"  
Calculated Area: 310 sq. ft  
Included: Yes

Heated: Yes  
Finished: Yes  
Enclosed: Yes  
Contiguous: Yes  
Permitted: Yes  
Wet space: No  
Addition: No  
Conversion: No

23 Floor 3 - Dining Room



Max Dimensions: 13'3" x 14'0"  
Calculated Area: 185 sq. ft  
Included: Yes

Heated: Yes  
Finished: Yes  
Enclosed: Yes  
Contiguous: Yes  
Permitted: Yes  
Wet space: No  
Addition: No  
Conversion: No

3215 Allendale Street Southwest, South Roanoke, Roanoke,  
Roanoke city, Virginia, United States, 24014

### 24 Floor 3 - Breakfast Nook



Max Dimensions: 12'1" x 7'0"  
Calculated Area: 86 sq. ft  
Included: Yes

Heated: Yes  
Finished: Yes  
Enclosed: Yes  
Contiguous: Yes  
Permitted: Yes  
Wet space: No  
Addition: No  
Conversion: No

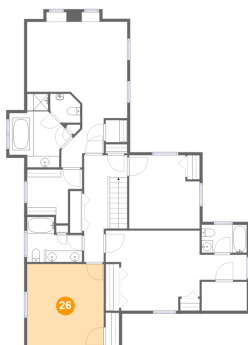
### 25 Floor 3 - Office



Max Dimensions: 12'4" x 16'0"  
Calculated Area: 197 sq. ft  
Included: Yes

Heated: Yes  
Finished: Yes  
Enclosed: Yes  
Contiguous: Yes  
Permitted: Yes  
Wet space: No  
Addition: No  
Conversion: No

### 26 Floor 4 - Bedroom



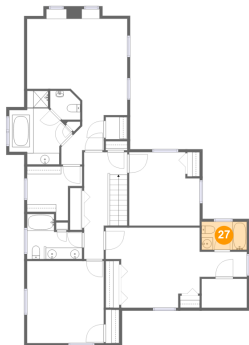
Max Dimensions: 13'4" x 14'4"  
Calculated Area: 191 sq. ft  
Included: Yes

Heated: Yes  
Finished: Yes  
Enclosed: Yes  
Contiguous: Yes  
Permitted: Yes  
Wet space: No  
Addition: No  
Conversion: No



3215 Allendale Street Southwest, South Roanoke, Roanoke,  
Roanoke city, Virginia, United States, 24014

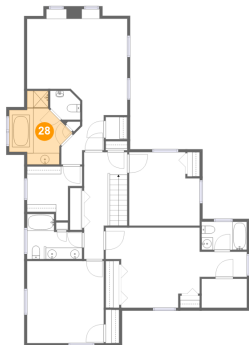
27 Floor 4 - Bath



Max Dimensions: 7'10" x 4'11"  
Calculated Area: 39 sq. ft  
Included: Yes

Heated: Yes  
Finished: Yes  
Enclosed: Yes  
Contiguous: Yes  
Permitted: Yes  
Wet space: Yes  
Addition: No  
Conversion: No

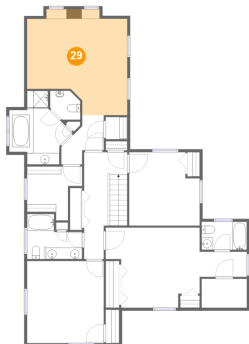
28 Floor 4 - Primary Bath



Max Dimensions: 11'0" x 12'10"  
Calculated Area: 93 sq. ft  
Included: Yes

Heated: Yes  
Finished: Yes  
Enclosed: Yes  
Contiguous: Yes  
Permitted: Yes  
Wet space: Yes  
Addition: No  
Conversion: No

29 Floor 4 - Primary Bedroom

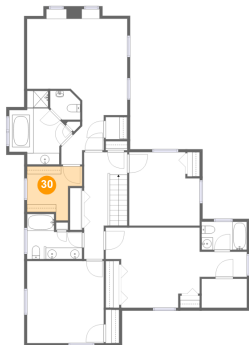


Max Dimensions: 17'6" x 16'9"  
Calculated Area: 267 sq. ft  
Included: Yes

Heated: Yes  
Finished: Yes  
Enclosed: Yes  
Contiguous: Yes  
Permitted: Yes  
Wet space: No  
Addition: No  
Conversion: No

3215 Allendale Street Southwest, South Roanoke, Roanoke,  
Roanoke city, Virginia, United States, 24014

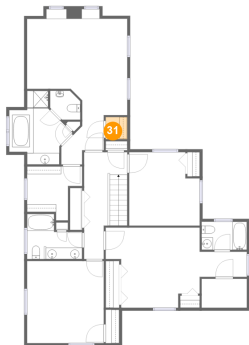
30 Floor 4 - W.I.C.



Max Dimensions: 9'7" x 9'5"  
Calculated Area: 68 sq. ft  
Included: Yes

Heated: Yes  
Finished: Yes  
Enclosed: Yes  
Contiguous: Yes  
Permitted: Yes  
Wet space: No  
Addition: No  
Conversion: No

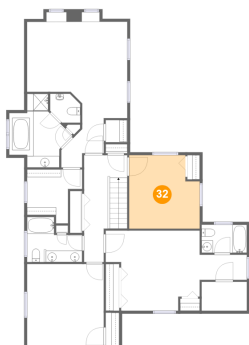
31 Floor 4 - W.I.C.



Max Dimensions: 3'9" x 3'10"  
Calculated Area: 15 sq. ft  
Included: Yes

Heated: Yes  
Finished: Yes  
Enclosed: Yes  
Contiguous: Yes  
Permitted: Yes  
Wet space: No  
Addition: No  
Conversion: No

32 Floor 4 - Bedroom

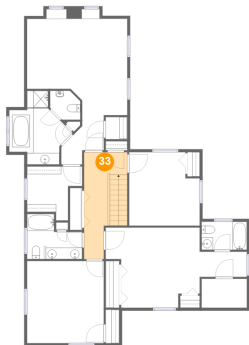


Max Dimensions: 12'3" x 12'10"  
Calculated Area: 146 sq. ft  
Included: Yes

Heated: Yes  
Finished: Yes  
Enclosed: Yes  
Contiguous: Yes  
Permitted: Yes  
Wet space: No  
Addition: No  
Conversion: No

3215 Allendale Street Southwest, South Roanoke, Roanoke,  
Roanoke city, Virginia, United States, 24014

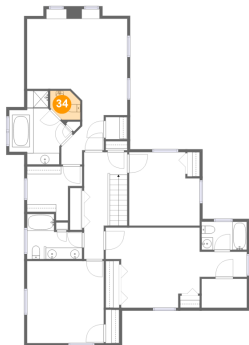
33 Floor 4 - Hall



Max Dimensions: 7'6" x 18'8"  
Calculated Area: 117 sq. ft  
Included: Yes

Heated: Yes  
Finished: Yes  
Enclosed: Yes  
Contiguous: Yes  
Permitted: Yes  
Wet space: No  
Addition: No  
Conversion: No

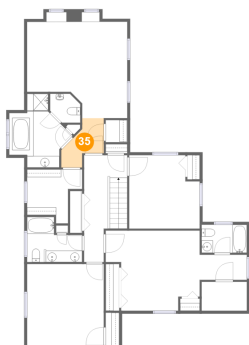
34 Floor 4 - WC



Max Dimensions: 5'3" x 5'1"  
Calculated Area: 23 sq. ft  
Included: Yes

Heated: Yes  
Finished: Yes  
Enclosed: Yes  
Contiguous: Yes  
Permitted: Yes  
Wet space: Yes  
Addition: No  
Conversion: No

35 Floor 4 - Hall

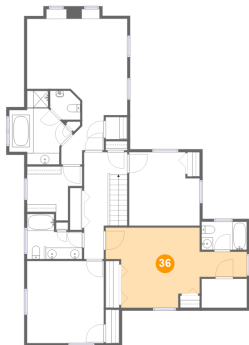


Max Dimensions: 6'1" x 6'1"  
Calculated Area: 41 sq. ft  
Included: Yes

Heated: Yes  
Finished: Yes  
Enclosed: Yes  
Contiguous: Yes  
Permitted: Yes  
Wet space: No  
Addition: No  
Conversion: No

3215 Allendale Street Southwest, South Roanoke, Roanoke,  
Roanoke city, Virginia, United States, 24014

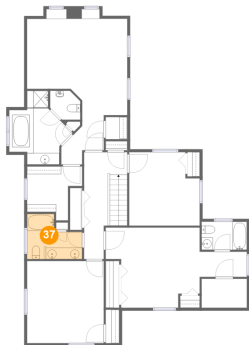
**36** Floor 4 - Bedroom



Max Dimensions: 24'7" x 14'0"  
Calculated Area: 233 sq. ft  
Included: Yes

Heated: Yes  
Finished: Yes  
Enclosed: Yes  
Contiguous: Yes  
Permitted: Yes  
Wet space: No  
Addition: No  
Conversion: No

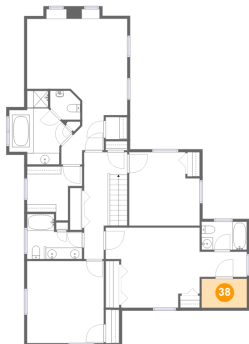
**37** Floor 4 - Bath



Max Dimensions: 9'7" x 7'11"  
Calculated Area: 60 sq. ft  
Included: Yes

Heated: Yes  
Finished: Yes  
Enclosed: Yes  
Contiguous: Yes  
Permitted: Yes  
Wet space: Yes  
Addition: No  
Conversion: No

**38** Floor 4 - W.I.C.



Max Dimensions: 7'11" x 5'1"  
Calculated Area: 40 sq. ft  
Included: Yes

Heated: Yes  
Finished: Yes  
Enclosed: Yes  
Contiguous: Yes  
Permitted: Yes  
Wet space: No  
Addition: No  
Conversion: No