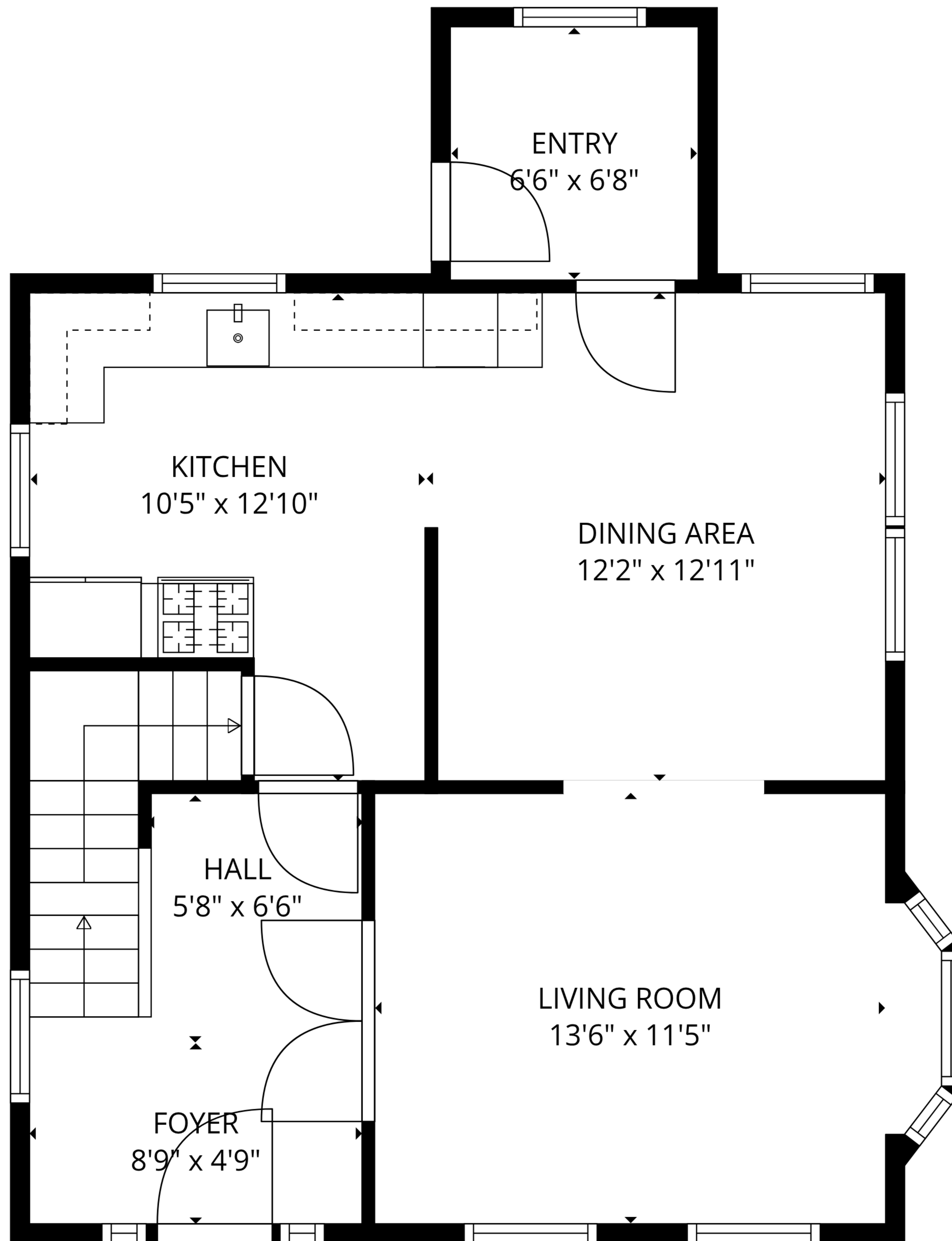


BASEMENT
22'8" x 24'8"

TOTAL: 1281 sq. ft

Basement: 0 sq. ft, 1st floor: 603 sq. ft, 2nd floor: 557 sq. ft, 3rd floor: 121 sq. ft
EXCLUDED AREAS: BASEMENT: 537 sq. ft, BAY WINDOW: 9 sq. ft, LOW CEILING: 114 sq. ft,
WALLS: 189 sq. ft

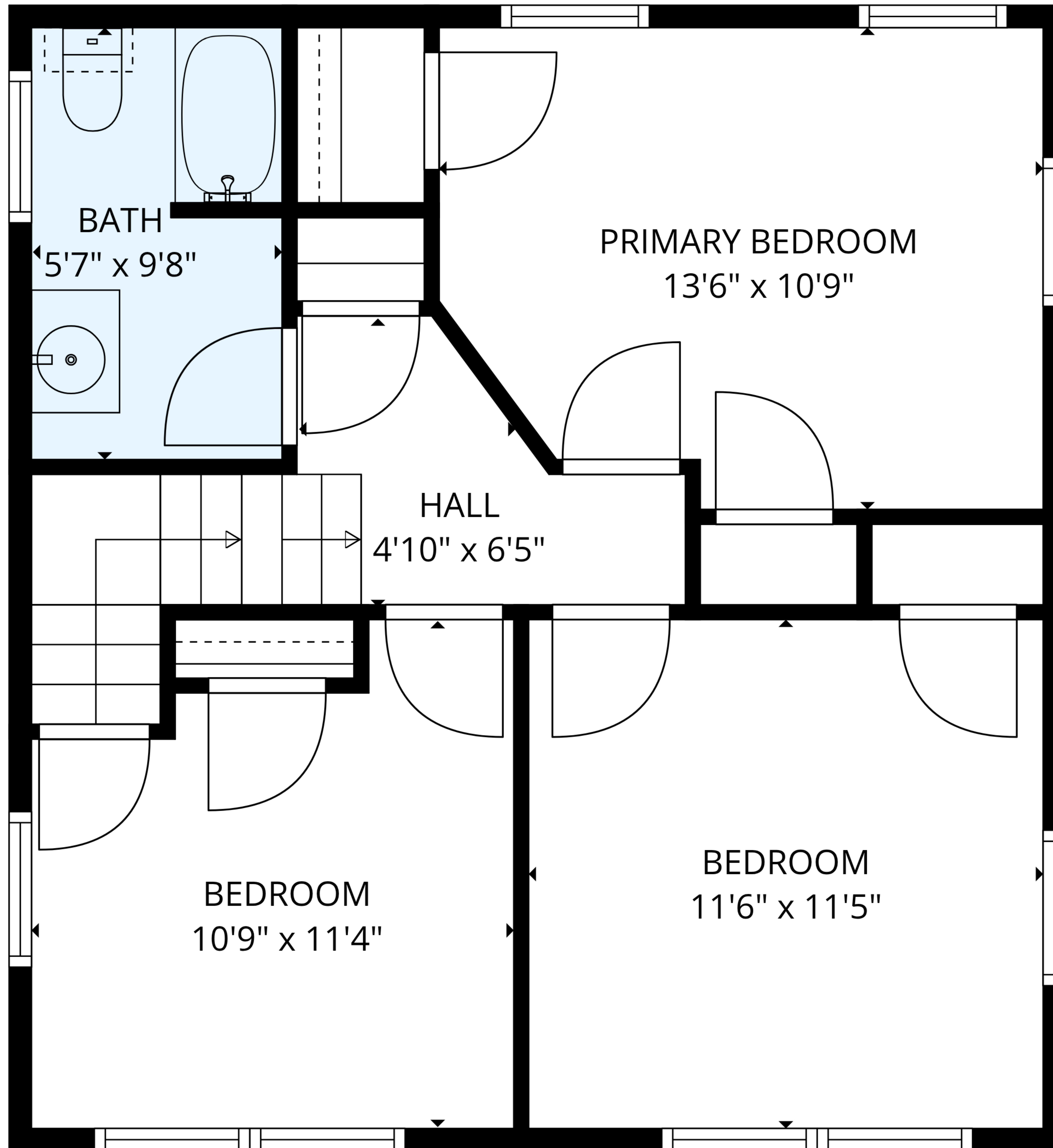
MEASUREMENTS ARE DEEMED RELIABLE BUT ARE NOT GUARANTEED.



TOTAL: 1281 sq. ft

Basement: 0 sq. ft, 1st floor: 603 sq. ft, 2nd floor: 557 sq. ft, 3rd floor: 121 sq. ft
 EXCLUDED AREAS: BASEMENT: 537 sq. ft, BAY WINDOW: 9 sq. ft, LOW CEILING: 114 sq. ft,
 WALLS: 189 sq. ft

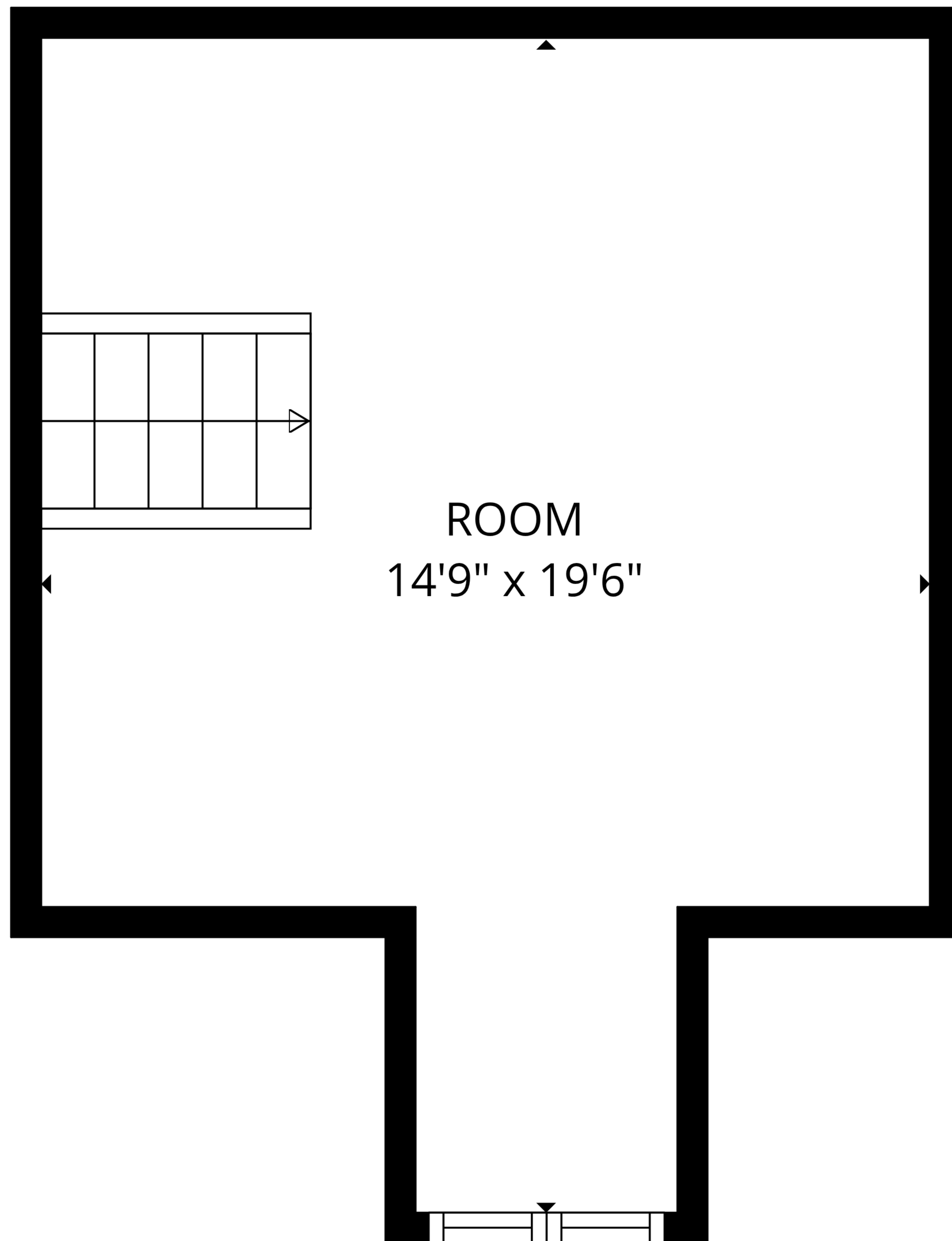
MEASUREMENTS ARE DEEMED RELIABLE BUT ARE NOT GUARANTEED.



TOTAL: 1281 sq. ft

Basement: 0 sq. ft, 1st floor: 603 sq. ft, 2nd floor: 557 sq. ft, 3rd floor: 121 sq. ft
 EXCLUDED AREAS: BASEMENT: 537 sq. ft, BAY WINDOW: 9 sq. ft, LOW CEILING: 114 sq. ft,
 WALLS: 189 sq. ft

MEASUREMENTS ARE DEEMED RELIABLE BUT ARE NOT GUARANTEED.

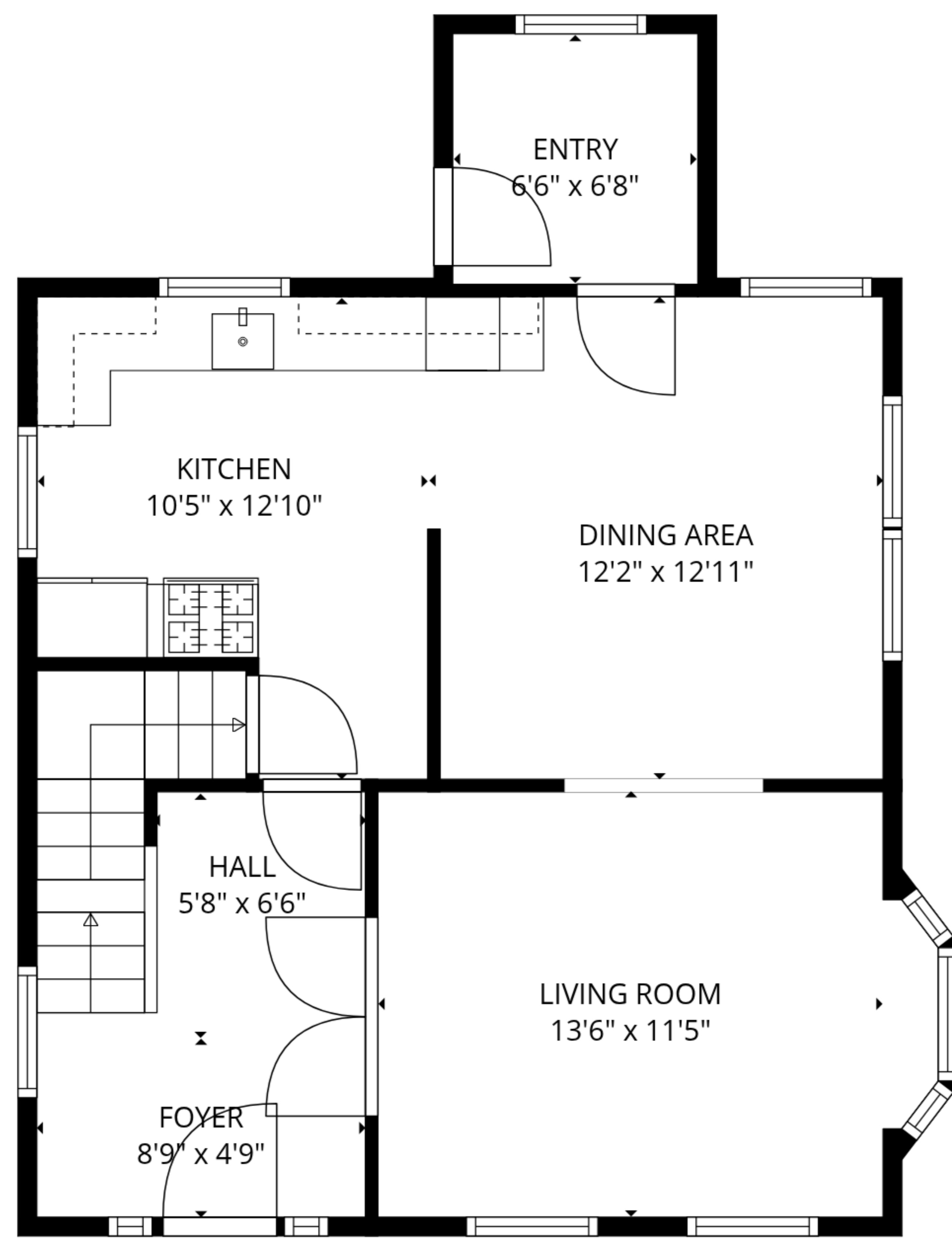


ROOM
14'9" x 19'6"

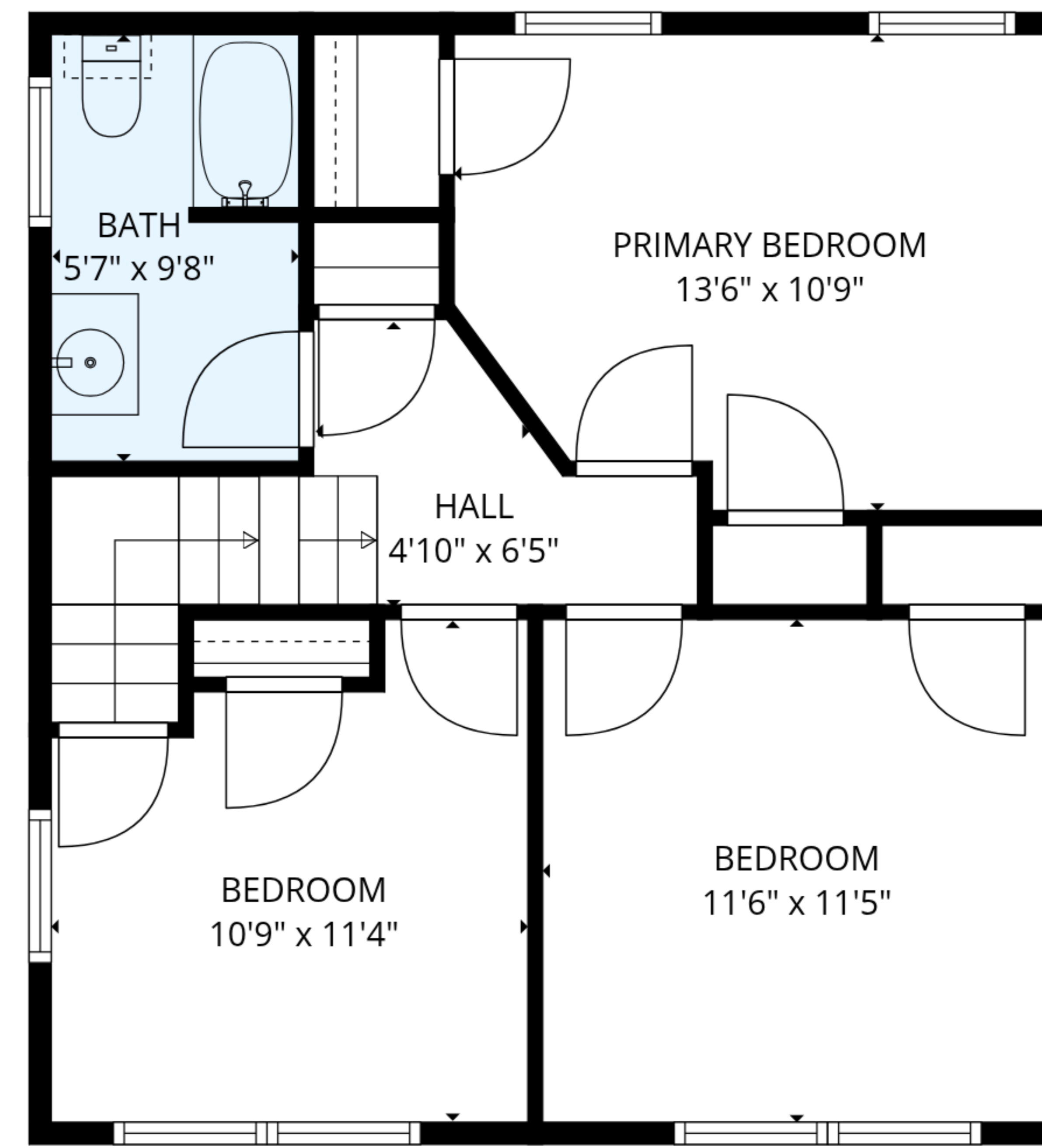
TOTAL: 1281 sq. ft

Basement: 0 sq. ft, 1st floor: 603 sq. ft, 2nd floor: 557 sq. ft, 3rd floor: 121 sq. ft
EXCLUDED AREAS: BASEMENT: 537 sq. ft, BAY WINDOW: 9 sq. ft, LOW CEILING: 114 sq. ft,
WALLS: 189 sq. ft

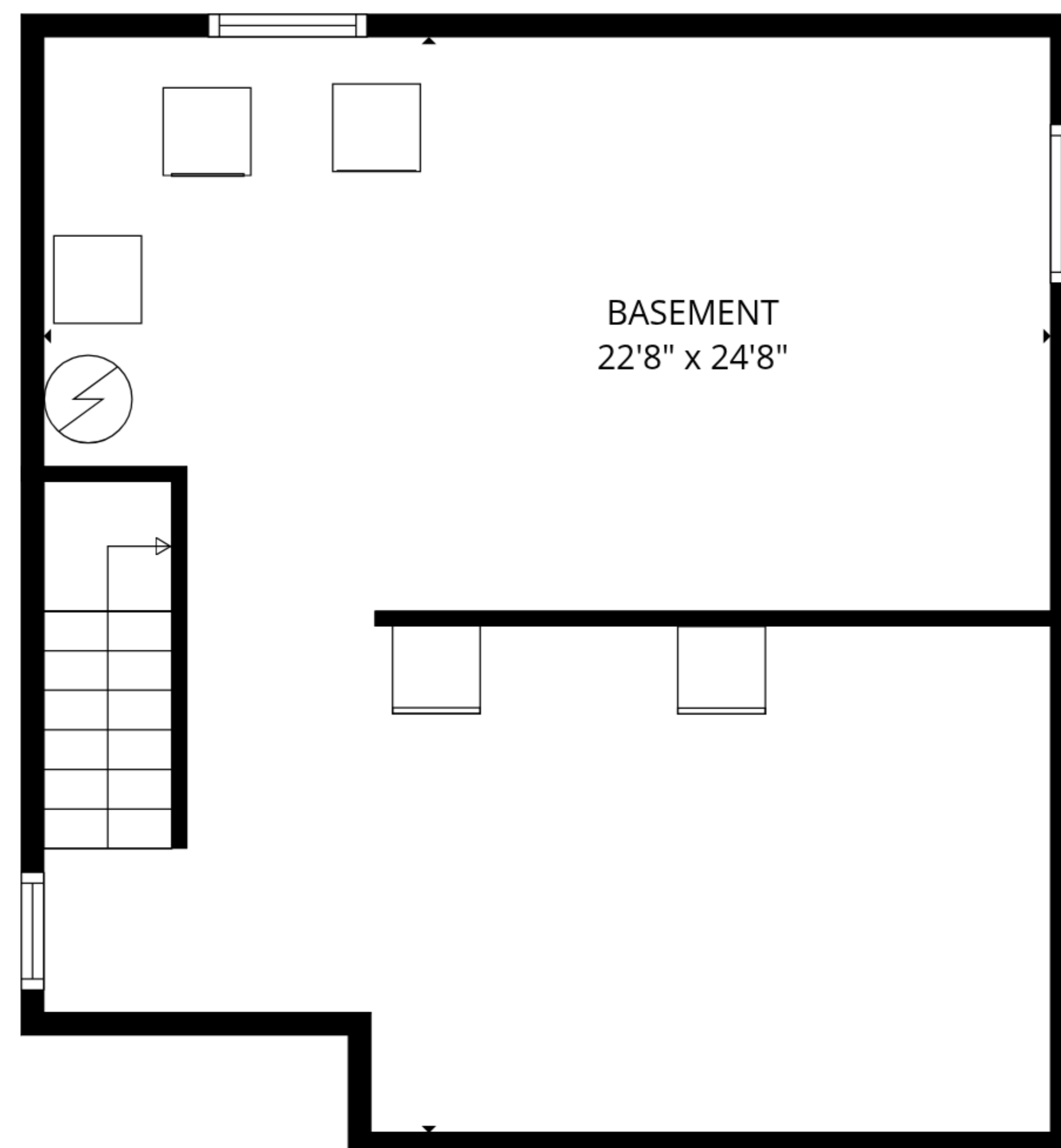
MEASUREMENTS ARE DEEMED RELIABLE BUT ARE NOT GUARANTEED.



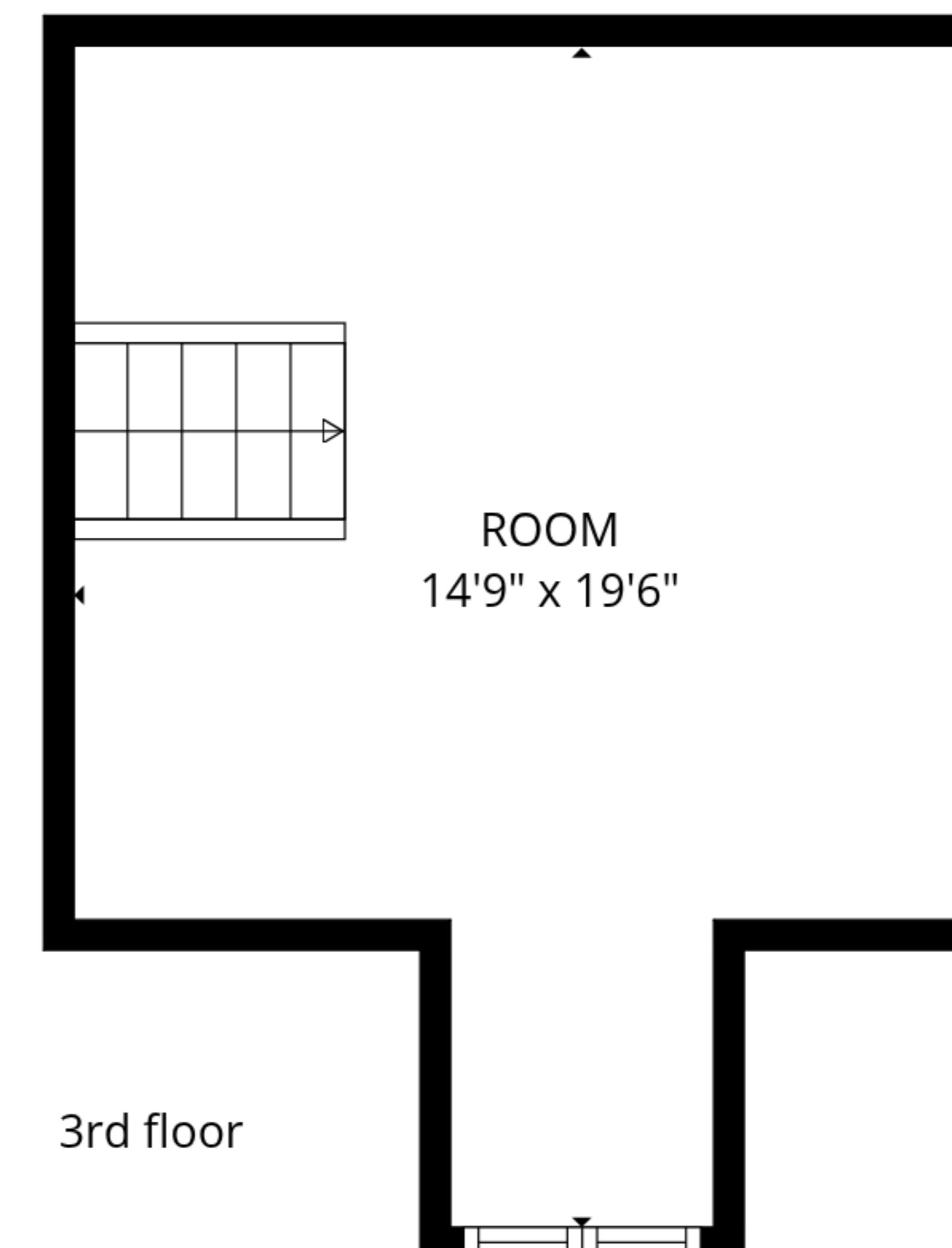
1st floor



2nd floor



Basement



3rd floor

TOTAL: 1281 sq. ft

Basement: 0 sq. ft, 1st floor: 603 sq. ft, 2nd floor: 557 sq. ft, 3rd floor: 121 sq. ft
 EXCLUDED AREAS: BASEMENT: 537 sq. ft, BAY WINDOW: 9 sq. ft, LOW CEILING: 114 sq. ft,
 WALLS: 189 sq. ft