



### Total Area: 1856 sq. ft

Basement: 90 sq. ft, 1st Floor: 855 sq. ft, 2nd Floor: 911 sq. ft

Excluded: Basement 820 sq. ft, Garage 448 sq. ft, Deck 451 sq. ft, Porch 260 sq. ft, Stairwell 150 sq. ft, Walls: 265 sq. ft

### Property summary

 **3** Floors

 **3** Bedrooms

 **2** Bathrooms

Home data report

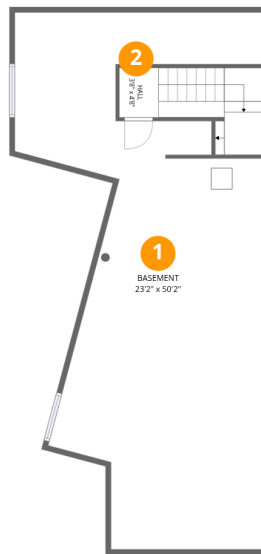
**6720 Zuni St, Denver, CO, US**

 **1**  
Half baths

 **1**  
Garages

Home data report

6720 Zuni St, Denver, CO, US



## Room dimensions

Floor 1 Below grade

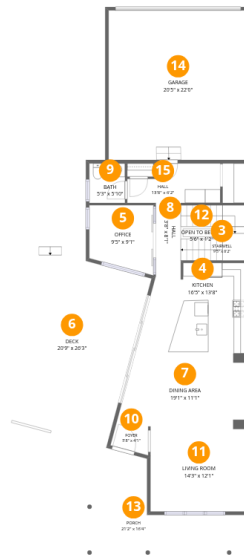
Total: 90 sqft

Excluded: 820 sqft

#		Dimensions	sqft	Counted as living area
1	Basement	23'2" x 50'2"	818 sq. ft	No
2	Hall	3'8" x 4'8"	78 sq. ft	Yes

# Home data report

## 6720 Zuni St, Denver, CO, US



### Room dimensions

Floor 2

Total: 855 sqft

Excluded: 1236 sqft

#		Dimensions	sqft	Counted as living area
3	Stairwell	9'5" x 8'2"	70 sq. ft	No
4	Kitchen	16'5" x 13'8"	197 sq. ft	Yes
5	Office	9'5" x 9'1"	86 sq. ft	Yes
6	Deck	20'9" x 26'3"	451 sq. ft	No
7	Dining Area	19'1" x 11'1"	192 sq. ft	Yes
8	Hall	3'8" x 8'1"	33 sq. ft	Yes
9	Bath	5'3" x 5'10"	30 sq. ft	Yes
10	Foyer	5'8" x 4'1"	18 sq. ft	Yes
11	Living Room	14'3" x 12'1"	173 sq. ft	Yes
12	Open To Below	5'6" x 1'2"	6 sq. ft	Yes
13	Porch	21'2" x 16'4"	260 sq. ft	No

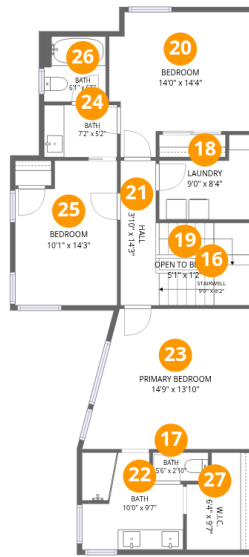
Home data report

**6720 Zuni St,Denver,CO,US**

#		Dimensions	sqft	Counted as living area
14	Garage	20'5" x 22'0"	448 sq. ft	No
15	Hall	13'8" x 6'2"	71 sq. ft	Yes

# Home data report

6720 Zuni St, Denver, CO, US



## Room dimensions

Floor 3

Total: 911 sqft Excluded: 73 sqft

#		Dimensions	sqft	Counted as living area
16	Stairwell	9'0" x 8'2"	68 sq. ft	No
17	Bath	5'6" x 2'10"	15 sq. ft	Yes
18	Laundry	9'0" x 8'4"	58 sq. ft	Yes
19	Open To Below	5'1" x 1'2"	6 sq. ft	Yes
20	Bedroom	14'0" x 14'4"	166 sq. ft	Yes
21	Hall	3'10" x 14'3"	52 sq. ft	Yes
22	Bath	10'0" x 9'7"	84 sq. ft	Yes
23	Primary Bedroom	14'9" x 13'10"	205 sq. ft	Yes
24	Bath	7'2" x 5'2"	37 sq. ft	Yes
25	Bedroom	10'1" x 14'3"	132 sq. ft	Yes
26	Bath	6'1" x 6'5"	39 sq. ft	Yes

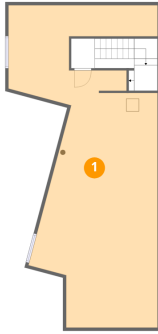
Home data report

6720 Zuni St,Denver,CO,US

#		Dimensions	sqft	Counted as living area
27	W.I.C.	6'4" x 9'7"	53 sq. ft	Yes

## 1 Floor 1 - Basement

---

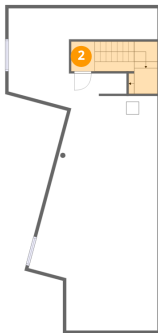


Dimensions: 23'2" x 50'2"  
Area: 818 sq. ft  
Counted as living area: No

Heated: Yes  
Finished: No  
Enclosed: Yes  
Contiguous: Yes  
Permitted: Yes  
Wet space: No  
Addition: No  
Conversion: No

## 2 Floor 1 - Hall

---



Dimensions: 3'8" x 4'8"  
Area: 78 sq. ft  
Counted as living area: No

Heated: Yes  
Finished: Yes  
Enclosed: Yes  
Contiguous: No  
Permitted: Yes  
Wet space: No  
Addition: No  
Conversion: No

### 3 Floor 2 - Stairwell



Dimensions: 9'5" x 8'2"  
Area: 70 sq. ft  
Counted as living area: No

Heated: No  
Finished: No  
Enclosed: No  
Contiguous: Yes  
Permitted: No  
Wet space: No  
Addition: No  
Conversion: No

### 4 Floor 2 - Kitchen



Dimensions: 16'5" x 13'8"  
Area: 197 sq. ft  
Counted as living area: Yes

Heated: Yes  
Finished: Yes  
Enclosed: Yes  
Contiguous: Yes  
Permitted: Yes  
Wet space: No  
Addition: No  
Conversion: No

### 5 Floor 2 - Office



Dimensions: 9'5" x 9'1"  
Area: 86 sq. ft  
Counted as living area: Yes

Heated: Yes  
Finished: Yes  
Enclosed: Yes  
Contiguous: Yes  
Permitted: Yes  
Wet space: No  
Addition: No  
Conversion: No

## 6 Floor 2 - Deck



Dimensions: 20'9" x 26'3"  
Area: 451 sq. ft  
Counted as living area: No

Heated: No  
Finished: No  
Enclosed: No  
Contiguous: Yes  
Permitted: Yes  
Wet space: No  
Addition: No  
Conversion: No

## 7 Floor 2 - Dining Area



Dimensions: 19'1" x 11'1"  
Area: 192 sq. ft  
Counted as living area: Yes

Heated: Yes  
Finished: Yes  
Enclosed: Yes  
Contiguous: Yes  
Permitted: Yes  
Wet space: No  
Addition: No  
Conversion: No

## 8 Floor 2 - Hall



Dimensions: 3'8" x 8'1"  
Area: 33 sq. ft  
Counted as living area: Yes

Heated: Yes  
Finished: Yes  
Enclosed: Yes  
Contiguous: Yes  
Permitted: Yes  
Wet space: No  
Addition: No  
Conversion: No

## 9 Floor 2 - Bath



Dimensions: 5'3" x 5'10"  
Area: 30 sq. ft  
Counted as living area: Yes

Heated: Yes  
Finished: Yes  
Enclosed: Yes  
Contiguous: Yes  
Permitted: Yes  
Wet space: Yes  
Addition: No  
Conversion: No

## 10 Floor 2 - Foyer



Dimensions: 5'8" x 4'1"  
Area: 18 sq. ft  
Counted as living area: Yes

Heated: Yes  
Finished: Yes  
Enclosed: Yes  
Contiguous: Yes  
Permitted: Yes  
Wet space: No  
Addition: No  
Conversion: No

## 11 Floor 2 - Living Room



Dimensions: 14'3" x 12'1"  
Area: 173 sq. ft  
Counted as living area: Yes

Heated: Yes  
Finished: Yes  
Enclosed: Yes  
Contiguous: Yes  
Permitted: Yes  
Wet space: No  
Addition: No  
Conversion: No

## 12 Floor 2 - Open To Below



Dimensions: 5'6" x 1'2"  
Area: 6 sq. ft  
Counted as living area: Yes

Heated: No  
Finished: No  
Enclosed: No  
Contiguous: Yes  
Permitted: No  
Wet space: No  
Addition: No  
Conversion: No

## 13 Floor 2 - Porch



Dimensions: 21'2" x 16'4"  
Area: 260 sq. ft  
Counted as living area: No

Heated: No  
Finished: No  
Enclosed: No  
Contiguous: Yes  
Permitted: Yes  
Wet space: No  
Addition: No  
Conversion: No

## 14 Floor 2 - Garage



Dimensions: 20'5" x 22'0"  
Area: 448 sq. ft  
Counted as living area: No

Heated: No  
Finished: No  
Enclosed: Yes  
Contiguous: Yes  
Permitted: Yes  
Wet space: No  
Addition: No  
Conversion: No

### 15 Floor 2 - Hall



Dimensions: 13'8" x 6'2"  
Area: 71 sq. ft  
Counted as living area: Yes

Heated: Yes  
Finished: Yes  
Enclosed: Yes  
Contiguous: Yes  
Permitted: Yes  
Wet space: No  
Addition: No  
Conversion: No

### 16 Floor 3 - Stairwell



Dimensions: 9'0" x 8'2"  
Area: 68 sq. ft  
Counted as living area: No

Heated: No  
Finished: No  
Enclosed: No  
Contiguous: Yes  
Permitted: No  
Wet space: No  
Addition: No  
Conversion: No

### 17 Floor 3 - Bath



Dimensions: 5'6" x 2'10"  
Area: 15 sq. ft  
Counted as living area: Yes

Heated: Yes  
Finished: Yes  
Enclosed: Yes  
Contiguous: Yes  
Permitted: Yes  
Wet space: Yes  
Addition: No  
Conversion: No

### 18 Floor 3 - Laundry



Dimensions: 9'0" x 8'4"  
Area: 58 sq. ft  
Counted as living area: Yes

Heated: Yes  
Finished: Yes  
Enclosed: Yes  
Contiguous: Yes  
Permitted: Yes  
Wet space: No  
Addition: No  
Conversion: No

### 19 Floor 3 - Open To Below



Dimensions: 5'1" x 1'2"  
Area: 6 sq. ft  
Counted as living area: Yes

Heated: No  
Finished: No  
Enclosed: No  
Contiguous: Yes  
Permitted: No  
Wet space: No  
Addition: No  
Conversion: No

### 20 Floor 3 - Bedroom



Dimensions: 14'0" x 14'4"  
Area: 166 sq. ft  
Counted as living area: Yes

Heated: Yes  
Finished: Yes  
Enclosed: Yes  
Contiguous: Yes  
Permitted: Yes  
Wet space: No  
Addition: No  
Conversion: No

### 21 Floor 3 - Hall

---



Dimensions: 3'10" x 14'3"  
Area: 52 sq. ft  
Counted as living area: Yes

Heated: Yes  
Finished: Yes  
Enclosed: Yes  
Contiguous: Yes  
Permitted: Yes  
Wet space: No  
Addition: No  
Conversion: No

### 22 Floor 3 - Bath

---



Dimensions: 10'0" x 9'7"  
Area: 84 sq. ft  
Counted as living area: Yes

Heated: Yes  
Finished: Yes  
Enclosed: Yes  
Contiguous: Yes  
Permitted: Yes  
Wet space: Yes  
Addition: No  
Conversion: No

### 23 Floor 3 - Primary Bedroom

---



Dimensions: 14'9" x 13'10"  
Area: 205 sq. ft  
Counted as living area: Yes

Heated: Yes  
Finished: Yes  
Enclosed: Yes  
Contiguous: Yes  
Permitted: Yes  
Wet space: No  
Addition: No  
Conversion: No

**24** Floor 3 - Bath



Dimensions: 7'2" x 5'2"  
Area: 37 sq. ft  
Counted as living area: Yes

Heated: Yes  
Finished: Yes  
Enclosed: Yes  
Contiguous: Yes  
Permitted: Yes  
Wet space: Yes  
Addition: No  
Conversion: No

**25** Floor 3 - Bedroom



Dimensions: 10'1" x 14'3"  
Area: 132 sq. ft  
Counted as living area: Yes

Heated: Yes  
Finished: Yes  
Enclosed: Yes  
Contiguous: Yes  
Permitted: Yes  
Wet space: No  
Addition: No  
Conversion: No

**26** Floor 3 - Bath



Dimensions: 6'1" x 6'5"  
Area: 39 sq. ft  
Counted as living area: Yes

Heated: Yes  
Finished: Yes  
Enclosed: Yes  
Contiguous: Yes  
Permitted: Yes  
Wet space: Yes  
Addition: No  
Conversion: No

**27** Floor 3 - W.I.C.

---



**Dimensions:** 6'4" x 9'7"  
**Area:** 53 sq. ft  
**Counted as living area:** Yes

**Heated:** Yes  
**Finished:** Yes  
**Enclosed:** Yes  
**Contiguous:** Yes  
**Permitted:** Yes  
**Wet space:** No  
**Addition:** No  
**Conversion:** No