

Home data report

675 Blackberry Ridge Drive, Blackberry Countryside, Aurora,
Kane County, Illinois, United States, 60506



Total Area: 2484 sq. ft

Below Ground: 0 sq. ft, 1st Floor: 1456 sq. ft, 2nd Floor: 1028 sq. ft

Excluded: Basement 1406 sq. ft, Garage 410 sq. ft, Fireplace 14 sq. ft, Open to below 97 sq. ft, Stairwell 48 sq. ft, Low ceiling 11 sq. ft, Walls: 282 sq. ft

Property summary

 **3** Floors

 **4** Bedrooms

 **2** Bathrooms

Home data report

**675 Blackberry Ridge Drive, Blackberry Countryside, Aurora,
Kane County, Illinois, United States, 60506**

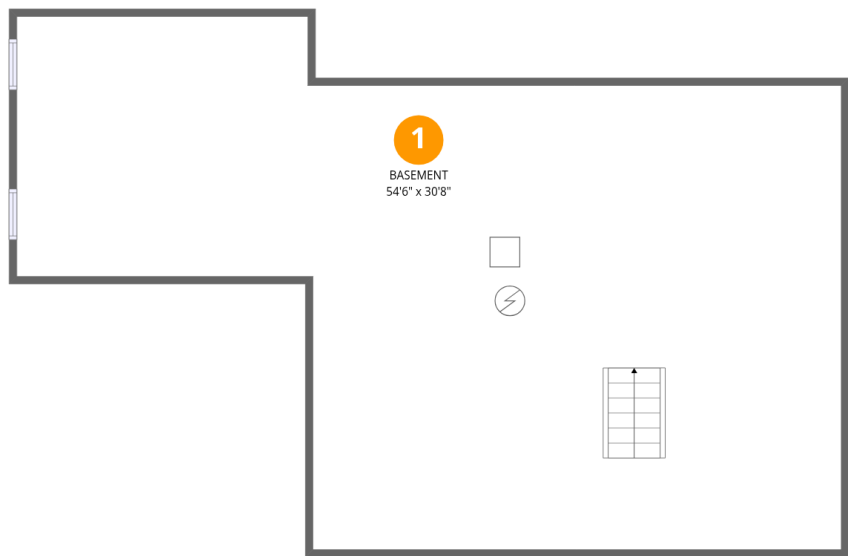


1
Half baths



1
Garages

675 Blackberry Ridge Drive, Blackberry Countryside, Aurora,
Kane County, Illinois, United States, 60506

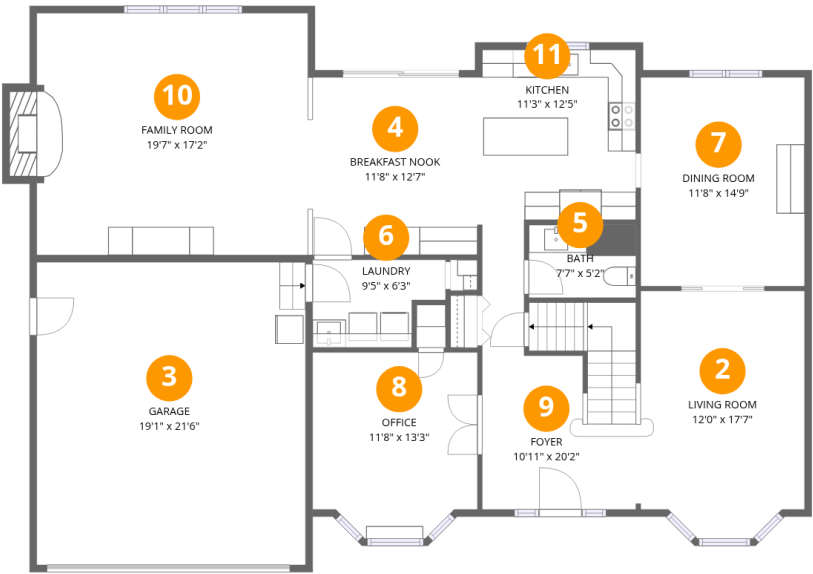


Room dimensions

Floor 1 Below grade Total:0sqft Excluded: 1406sqft

#		Dimensions	sqft	Counted as living area
1	Basement	54'6" x 30'8"	1406 sq. ft	No

675 Blackberry Ridge Drive, Blackberry Countryside, Aurora,
Kane County, Illinois, United States, 60506

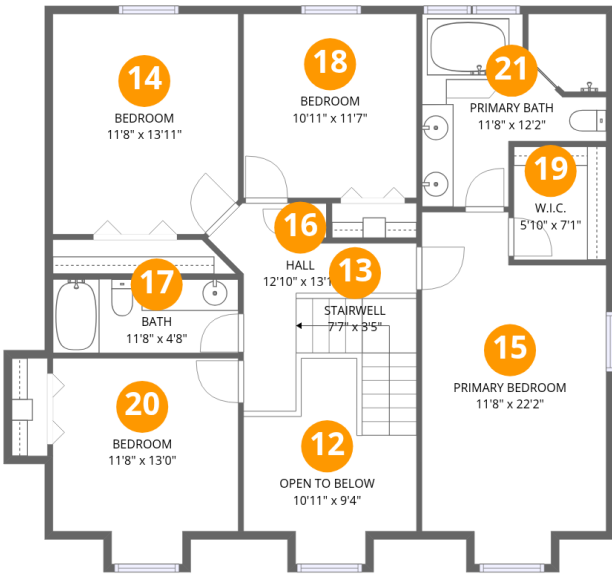


Room dimensions

Floor 2 Total:1456sqft Excluded: 424sqft

#		Dimensions	sqft	Counted as living area
2	Living Room	12'0" x 17'7"	196 sq. ft	Yes
3	Garage	19'1" x 21'6"	410 sq. ft	No
4	Breakfast Nook	11'8" x 12'7"	148 sq. ft	Yes
5	Bath	7'7" x 5'2"	39 sq. ft	Yes
6	Laundry	9'5" x 6'3"	51 sq. ft	Yes
7	Dining Room	11'8" x 14'9"	172 sq. ft	Yes
8	Office	11'8" x 13'3"	144 sq. ft	Yes
9	Foyer	10'11" x 20'2"	159 sq. ft	Yes
10	Family Room	19'7" x 17'2"	347 sq. ft	Yes
11	Kitchen	11'3" x 12'5"	137 sq. ft	Yes

675 Blackberry Ridge Drive, Blackberry Countryside, Aurora,
Kane County, Illinois, United States, 60506



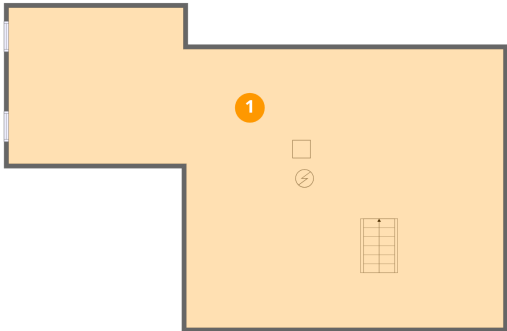
Room dimensions

Floor 3 Total:1028sqft Excluded: 156sqft

#		Dimensions	sqft	Counted as living area
12	Open To Below	10'11" x 9'4"	97 sq. ft	No
13	Stairwell	7'7" x 3'5"	48 sq. ft	No
14	Bedroom	11'8" x 13'11"	160 sq. ft	Yes
15	Primary Bedroom	11'8" x 22'2"	224 sq. ft	Yes
16	Hall	12'10" x 13'1"	75 sq. ft	Yes
17	Bath	11'8" x 4'8"	54 sq. ft	Yes
18	Bedroom	10'11" x 11'7"	127 sq. ft	Yes
19	W.I.C.	5'10" x 7'1"	42 sq. ft	Yes
20	Bedroom	11'8" x 13'0"	126 sq. ft	Yes
21	Primary Bath	11'8" x 12'2"	114 sq. ft	Yes

675 Blackberry Ridge Drive, Blackberry Countryside, Aurora,
Kane County, Illinois, United States, 60506

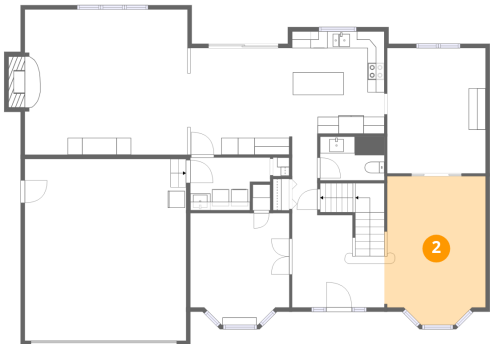
1 Floor 1 - Basement



Dimensions: 54'6" x 30'8"
Area: 1406 sq. ft
Counted as living area: No

Heated: Yes
Finished: No
Enclosed: Yes
Contiguous: Yes
Permitted: Yes
Wet space: No
Addition: No
Conversion: No

2 Floor 2 - Living Room



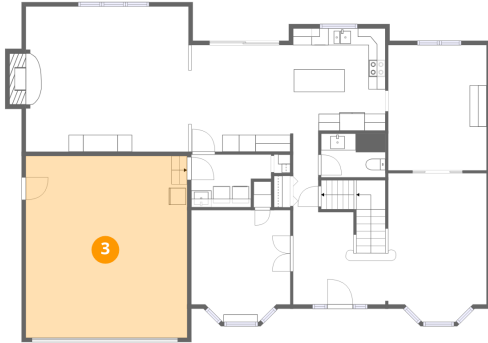
Dimensions: 12'0" x 17'7"
Area: 196 sq. ft
Counted as living area: Yes

Heated: Yes
Finished: Yes
Enclosed: Yes
Contiguous: Yes
Permitted: Yes
Wet space: No
Addition: No
Conversion: No

Home data report

675 Blackberry Ridge Drive, Blackberry Countryside, Aurora,
Kane County, Illinois, United States, 60506

3 Floor 2 - Garage



Dimensions: 19'1" x 21'6"
Area: 410 sq. ft
Counted as living area: No

Heated: No
Finished: No
Enclosed: Yes
Contiguous: Yes
Permitted: Yes
Wet space: No
Addition: No
Conversion: No

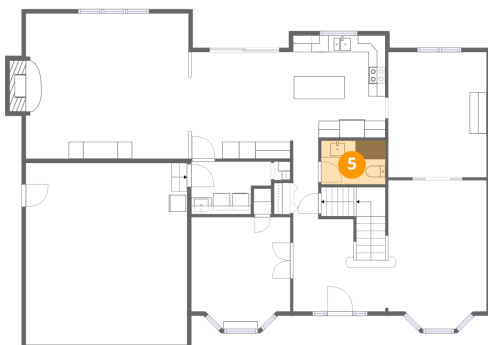
4 Floor 2 - Breakfast Nook



Dimensions: 11'8" x 12'7"
Area: 148 sq. ft
Counted as living area: Yes

Heated: Yes
Finished: Yes
Enclosed: Yes
Contiguous: Yes
Permitted: Yes
Wet space: No
Addition: No
Conversion: No

5 Floor 2 - Bath

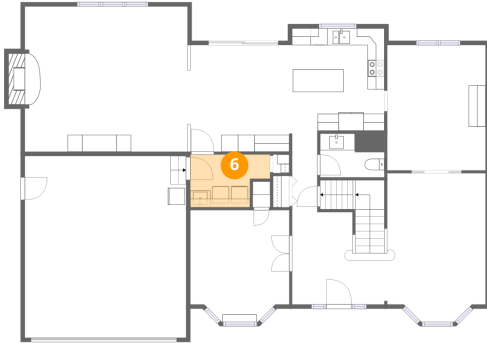


Dimensions: 7'7" x 5'2"
Area: 39 sq. ft
Counted as living area: Yes

Heated: Yes
Finished: Yes
Enclosed: Yes
Contiguous: Yes
Permitted: Yes
Wet space: Yes
Addition: No
Conversion: No

675 Blackberry Ridge Drive, Blackberry Countryside, Aurora,
Kane County, Illinois, United States, 60506

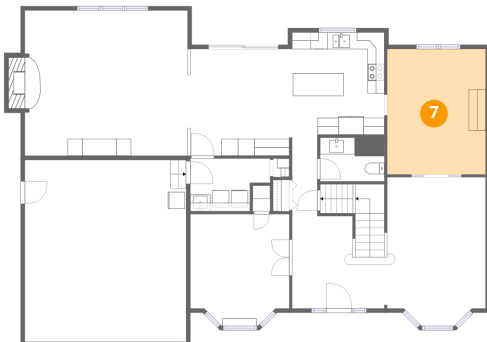
6 Floor 2 - Laundry



Dimensions: 9'5" x 6'3"
Area: 51 sq. ft
Counted as living area: Yes

Heated: Yes
Finished: Yes
Enclosed: Yes
Contiguous: Yes
Permitted: Yes
Wet space: No
Addition: No
Conversion: No

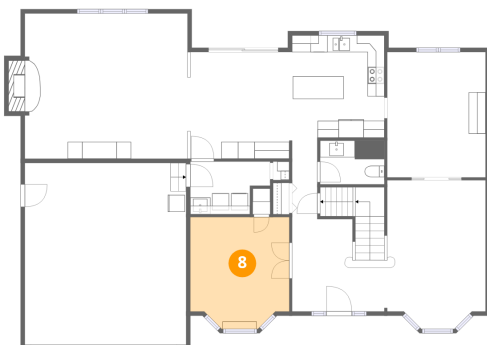
7 Floor 2 - Dining Room



Dimensions: 11'8" x 14'9"
Area: 172 sq. ft
Counted as living area: Yes

Heated: Yes
Finished: Yes
Enclosed: Yes
Contiguous: Yes
Permitted: Yes
Wet space: No
Addition: No
Conversion: No

8 Floor 2 - Office

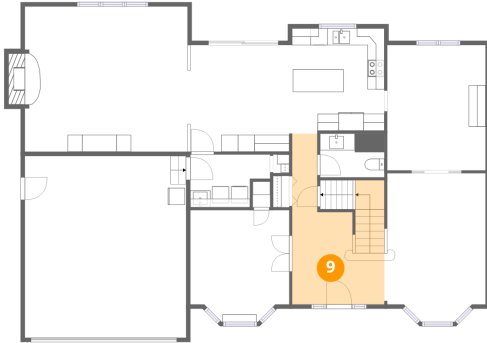


Dimensions: 11'8" x 13'3"
Area: 144 sq. ft
Counted as living area: Yes

Heated: Yes
Finished: Yes
Enclosed: Yes
Contiguous: Yes
Permitted: Yes
Wet space: No
Addition: No
Conversion: No

675 Blackberry Ridge Drive, Blackberry Countryside, Aurora,
Kane County, Illinois, United States, 60506

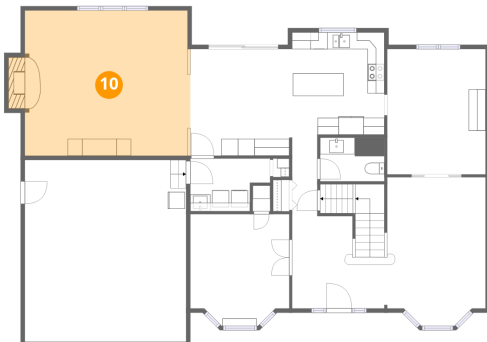
9 Floor 2 - Foyer



Dimensions: 10'11" x 20'2"
Area: 159 sq. ft
Counted as living area: Yes

Heated: Yes
Finished: Yes
Enclosed: Yes
Contiguous: Yes
Permitted: Yes
Wet space: No
Addition: No
Conversion: No

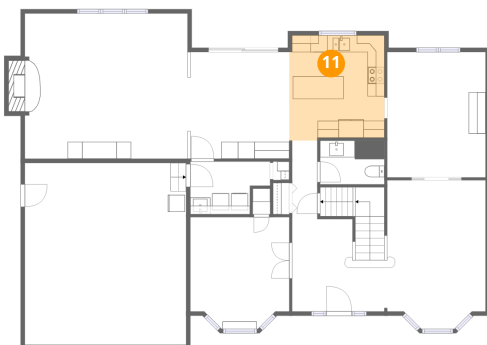
10 Floor 2 - Family Room



Dimensions: 19'7" x 17'2"
Area: 347 sq. ft
Counted as living area: Yes

Heated: Yes
Finished: Yes
Enclosed: Yes
Contiguous: Yes
Permitted: Yes
Wet space: No
Addition: No
Conversion: No

11 Floor 2 - Kitchen

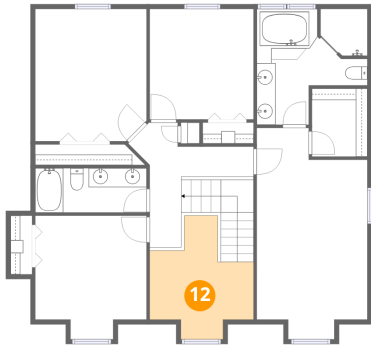


Dimensions: 11'3" x 12'5"
Area: 137 sq. ft
Counted as living area: Yes

Heated: Yes
Finished: Yes
Enclosed: Yes
Contiguous: Yes
Permitted: Yes
Wet space: No
Addition: No
Conversion: No

675 Blackberry Ridge Drive, Blackberry Countryside, Aurora,
Kane County, Illinois, United States, 60506

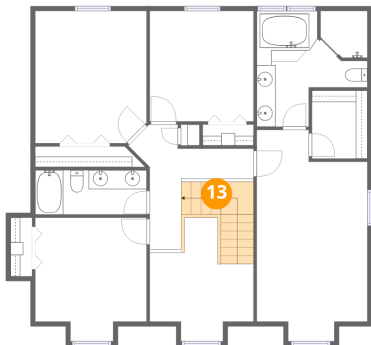
12 Floor 3 - Open To Below



Dimensions: 10'11" x 9'4"
Area: 97 sq. ft
Counted as living area: No

Heated: No
Finished: No
Enclosed: No
Contiguous: Yes
Permitted: No
Wet space: No
Addition: No
Conversion: No

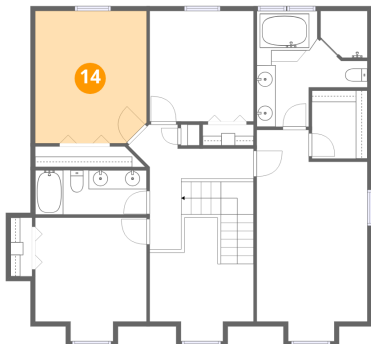
13 Floor 3 - Stairwell



Dimensions: 7'7" x 3'5"
Area: 48 sq. ft
Counted as living area: No

Heated: No
Finished: No
Enclosed: No
Contiguous: Yes
Permitted: No
Wet space: No
Addition: No
Conversion: No

14 Floor 3 - Bedroom

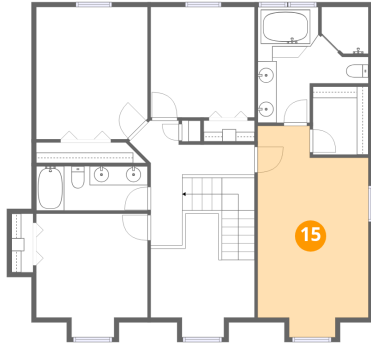


Dimensions: 11'8" x 13'11"
Area: 160 sq. ft
Counted as living area: Yes

Heated: Yes
Finished: Yes
Enclosed: Yes
Contiguous: Yes
Permitted: Yes
Wet space: No
Addition: No
Conversion: No

675 Blackberry Ridge Drive, Blackberry Countryside, Aurora,
Kane County, Illinois, United States, 60506

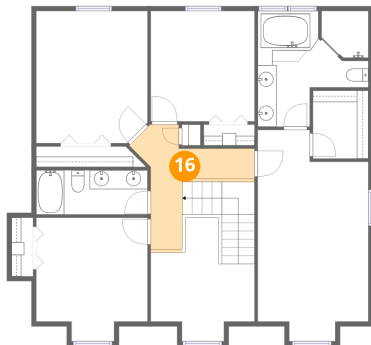
15 Floor 3 - Primary Bedroom



Dimensions: 11'8" x 22'2"
Area: 224 sq. ft
Counted as living area: Yes

Heated: Yes
Finished: Yes
Enclosed: Yes
Contiguous: Yes
Permitted: Yes
Wet space: No
Addition: No
Conversion: No

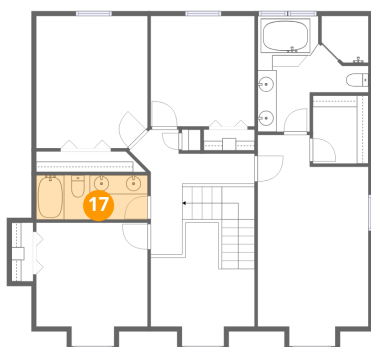
16 Floor 3 - Hall



Dimensions: 12'10" x 13'1"
Area: 75 sq. ft
Counted as living area: Yes

Heated: Yes
Finished: Yes
Enclosed: Yes
Contiguous: Yes
Permitted: Yes
Wet space: No
Addition: No
Conversion: No

17 Floor 3 - Bath



Dimensions: 11'8" x 4'8"
Area: 54 sq. ft
Counted as living area: Yes

Heated: Yes
Finished: Yes
Enclosed: Yes
Contiguous: Yes
Permitted: Yes
Wet space: Yes
Addition: No
Conversion: No

675 Blackberry Ridge Drive, Blackberry Countryside, Aurora,
Kane County, Illinois, United States, 60506

18 Floor 3 - Bedroom



Dimensions: 10'11" x 11'7"
Area: 127 sq. ft
Counted as living area: Yes

Heated: Yes
Finished: Yes
Enclosed: Yes
Contiguous: Yes
Permitted: Yes
Wet space: No
Addition: No
Conversion: No

19 Floor 3 - W.I.C.



Dimensions: 5'10" x 7'1"
Area: 42 sq. ft
Counted as living area: Yes

Heated: Yes
Finished: Yes
Enclosed: Yes
Contiguous: Yes
Permitted: Yes
Wet space: No
Addition: No
Conversion: No

20 Floor 3 - Bedroom

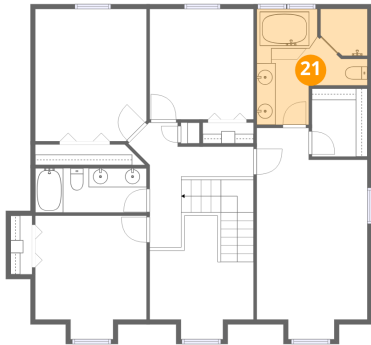


Dimensions: 11'8" x 13'0"
Area: 126 sq. ft
Counted as living area: Yes

Heated: Yes
Finished: Yes
Enclosed: Yes
Contiguous: Yes
Permitted: Yes
Wet space: No
Addition: No
Conversion: No

675 Blackberry Ridge Drive, Blackberry Countryside, Aurora,
Kane County, Illinois, United States, 60506

21 Floor 3 - Primary Bath



Dimensions: 11'8" x 12'2"
Area: 114 sq. ft
Counted as living area: Yes

Heated: Yes
Finished: Yes
Enclosed: Yes
Contiguous: Yes
Permitted: Yes
Wet space: Yes
Addition: No
Conversion: No