

Home report

3164 West Ridge Road Southwest, South Roanoke, Roanoke,  
Roanoke city, Virginia, United States, 24014



Total Area: 3152 sq. ft

Below Ground: 28 sq. ft, Floor 2: 980 sq. ft, Floor 3: 1191 sq. ft, Floor 4: 953 sq. ft, Floor 5: 0 sq. ft

Excluded: Basement 111 sq. ft, Porch 187 sq. ft, Low ceiling 160 sq. ft, Attic 375 sq. ft, Walls: 299 sq. ft

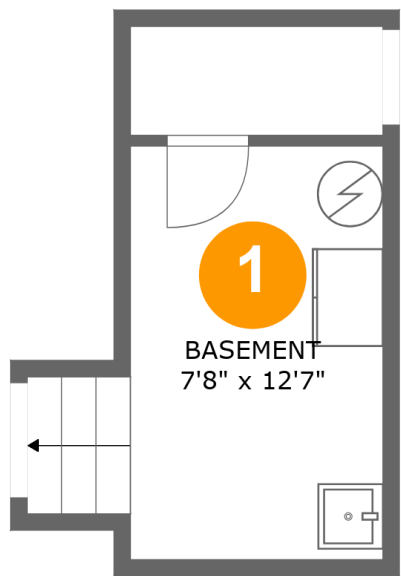
Property summary

**5** Floors

**3** Bedrooms

**3** Bathrooms

3164 West Ridge Road Southwest, South Roanoke, Roanoke,  
Roanoke city, Virginia, United States, 24014

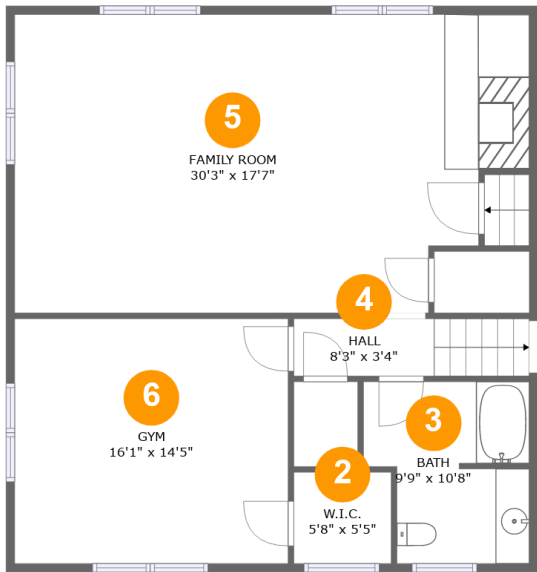


Room dimensions

Floor 1 Below ground Total:28sqft   Excluded: 111sqft

#		Max Dimensions	sqft	Included
1	Basement	7'8" x 12'7"	110 sq. ft	No

3164 West Ridge Road Southwest, South Roanoke, Roanoke,  
Roanoke city, Virginia, United States, 24014



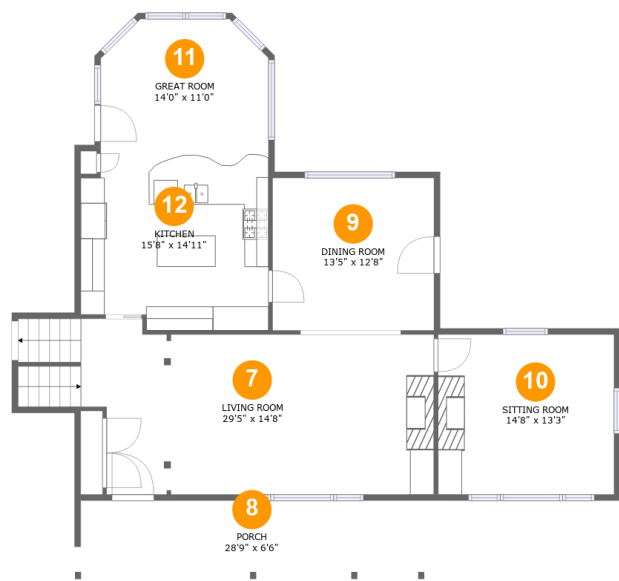
Room dimensions

Floor 2 Total:980sqft   Excluded: 0sqft

#		Max Dimensions	sqft	Included
2	W.I.C.	5'8" x 5'5"	31 sq. ft	Yes
3	Bath	9'9" x 10'8"	92 sq. ft	Yes
4	Hall	8'3" x 3'4"	47 sq. ft	Yes
5	Family Room	30'3" x 17'7"	496 sq. ft	Yes
6	Gym	16'1" x 14'5"	232 sq. ft	Yes

Home report

3164 West Ridge Road Southwest, South Roanoke, Roanoke,  
Roanoke city, Virginia, United States, 24014

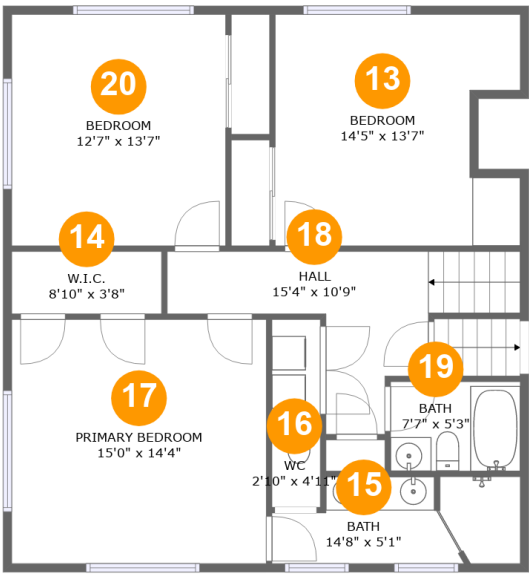


Room dimensions

Floor 3 Total:1191sqft   Excluded: 187sqft

#		Max Dimensions	sqft	Included
7	Living Room	29'5" x 14'8"	419 sq. ft	Yes
8	Porch	28'9" x 6'6"	187 sq. ft	No
9	Dining Room	13'5" x 12'8"	171 sq. ft	Yes
10	Sitting Room	14'8" x 13'3"	195 sq. ft	Yes
11	Great Room	14'0" x 11'0"	143 sq. ft	Yes
12	Kitchen	15'8" x 14'11"	222 sq. ft	Yes

3164 West Ridge Road Southwest, South Roanoke, Roanoke,  
Roanoke city, Virginia, United States, 24014



Room dimensions

Floor 4 Total:953sqft Excluded: 0sqft

#		Max Dimensions	sqft	Included
13	Bedroom	14'5" x 13'7"	181 sq. ft	Yes
14	W.I.C.	8'10" x 3'8"	32 sq. ft	Yes
15	Bath	14'8" x 5'1"	67 sq. ft	Yes
16	WC	2'10" x 4'11"	14 sq. ft	Yes
17	Primary Bedroom	15'0" x 14'4"	215 sq. ft	Yes
18	Hall	15'4" x 10'9"	110 sq. ft	Yes
19	Bath	7'7" x 5'3"	40 sq. ft	Yes
20	Bedroom	12'7" x 13'7"	172 sq. ft	Yes

3164 West Ridge Road Southwest, South Roanoke, Roanoke,  
Roanoke city, Virginia, United States, 24014



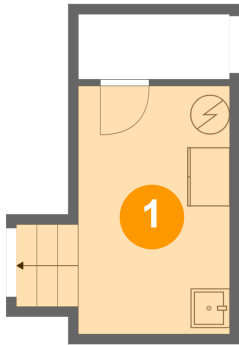
Room dimensions

Floor 5 Total:0sqft   Excluded: 535sqft

#		Max Dimensions	sqft	Included
21	Attic	30'5" x 17'3"	375 sq. ft	No

3164 West Ridge Road Southwest, South Roanoke, Roanoke,  
Roanoke city, Virginia, United States, 24014

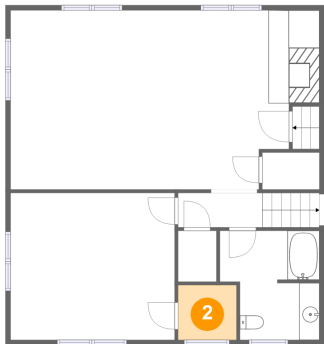
1 Floor 1 - Basement



Max Dimensions: 7'8" x 12'7"  
Calculated Area: 110 sq. ft  
Included: No

Heated: Yes  
Finished: No  
Enclosed: Yes  
Contiguous: Yes  
Permitted: Yes  
Wet space: No  
Addition: No  
Conversion: No

2 Floor 2 - W.I.C.

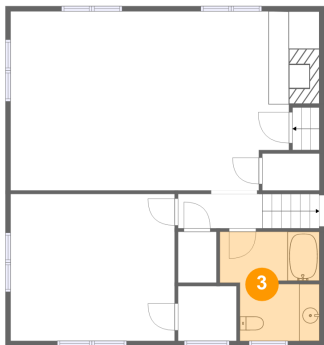


Max Dimensions: 5'8" x 5'5"  
Calculated Area: 31 sq. ft  
Included: Yes

Heated: Yes  
Finished: Yes  
Enclosed: Yes  
Contiguous: Yes  
Permitted: Yes  
Wet space: No  
Addition: No  
Conversion: No

3164 West Ridge Road Southwest, South Roanoke, Roanoke,  
Roanoke city, Virginia, United States, 24014

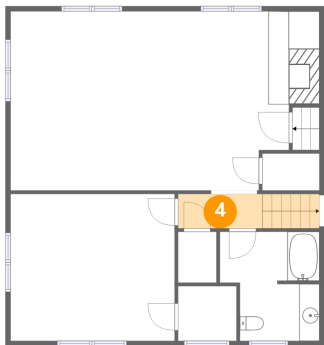
3 Floor 2 - Bath



Max Dimensions: 9'9" x 10'8"  
Calculated Area: 92 sq. ft  
Included: Yes

Heated: Yes  
Finished: Yes  
Enclosed: Yes  
Contiguous: Yes  
Permitted: Yes  
Wet space: Yes  
Addition: No  
Conversion: No

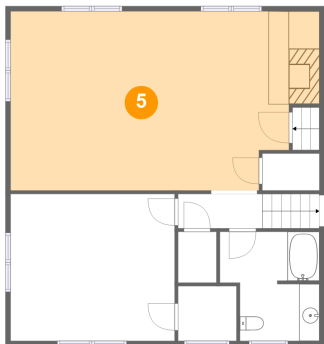
4 Floor 2 - Hall



Max Dimensions: 8'3" x 3'4"  
Calculated Area: 47 sq. ft  
Included: Yes

Heated: Yes  
Finished: Yes  
Enclosed: Yes  
Contiguous: Yes  
Permitted: Yes  
Wet space: No  
Addition: No  
Conversion: No

5 Floor 2 - Family Room



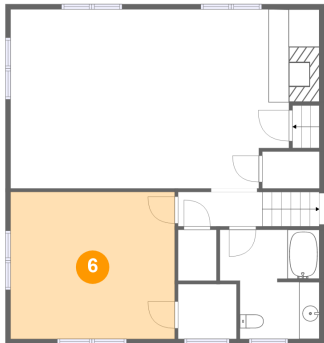
Max Dimensions: 30'3" x 17'7"  
Calculated Area: 496 sq. ft  
Included: Yes

Heated: Yes  
Finished: Yes  
Enclosed: Yes  
Contiguous: Yes  
Permitted: Yes  
Wet space: No  
Addition: No  
Conversion: No



3164 West Ridge Road Southwest, South Roanoke, Roanoke,  
Roanoke city, Virginia, United States, 24014

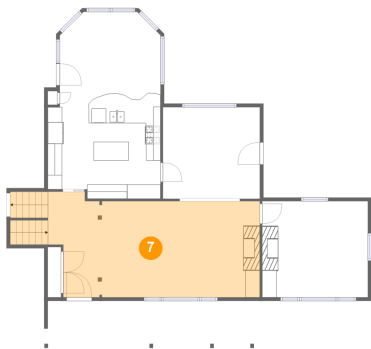
6 Floor 2 - Gym



Max Dimensions: 16'1" x 14'5"  
Calculated Area: 232 sq. ft  
Included: Yes

Heated: Yes  
Finished: Yes  
Enclosed: Yes  
Contiguous: Yes  
Permitted: Yes  
Wet space: No  
Addition: No  
Conversion: No

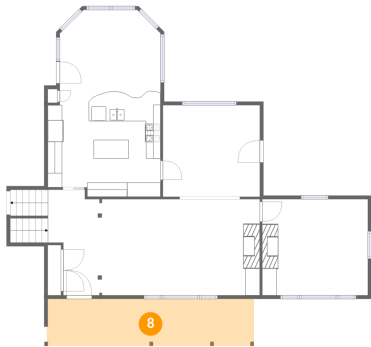
7 Floor 3 - Living Room



Max Dimensions: 29'5" x 14'8"  
Calculated Area: 419 sq. ft  
Included: Yes

Heated: Yes  
Finished: Yes  
Enclosed: Yes  
Contiguous: Yes  
Permitted: Yes  
Wet space: No  
Addition: No  
Conversion: No

8 Floor 3 - Porch

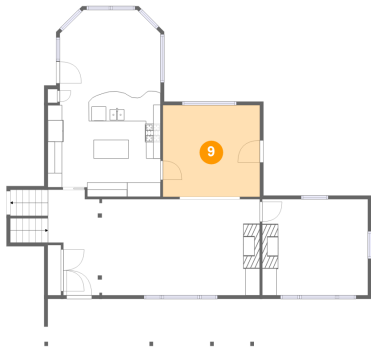


Max Dimensions: 28'9" x 6'6"  
Calculated Area: 187 sq. ft  
Included: No

Heated: No  
Finished: Yes  
Enclosed: No  
Contiguous: Yes  
Permitted: Yes  
Wet space: No  
Addition: No  
Conversion: No

3164 West Ridge Road Southwest, South Roanoke, Roanoke,  
Roanoke city, Virginia, United States, 24014

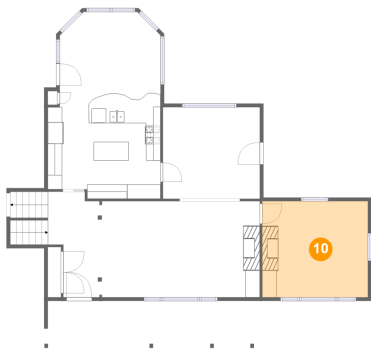
9 Floor 3 - Dining Room



Max Dimensions: 13'5" x 12'8"  
Calculated Area: 171 sq. ft  
Included: Yes

Heated: Yes  
Finished: Yes  
Enclosed: Yes  
Contiguous: Yes  
Permitted: Yes  
Wet space: No  
Addition: No  
Conversion: No

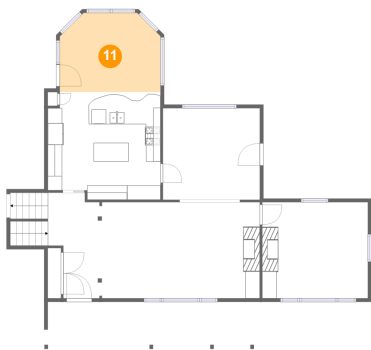
10 Floor 3 - Sitting Room



Max Dimensions: 14'8" x 13'3"  
Calculated Area: 195 sq. ft  
Included: Yes

Heated: Yes  
Finished: Yes  
Enclosed: Yes  
Contiguous: Yes  
Permitted: Yes  
Wet space: No  
Addition: No  
Conversion: No

11 Floor 3 - Great Room



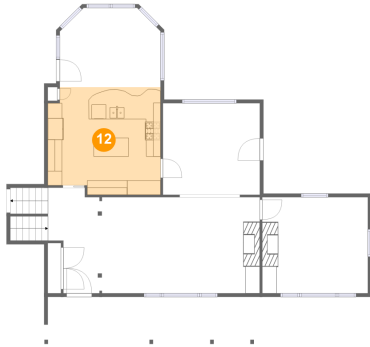
Max Dimensions: 14'0" x 11'0"  
Calculated Area: 143 sq. ft  
Included: Yes

Heated: Yes  
Finished: Yes  
Enclosed: Yes  
Contiguous: Yes  
Permitted: Yes  
Wet space: No  
Addition: No  
Conversion: No

## Home report

3164 West Ridge Road Southwest, South Roanoke, Roanoke,  
Roanoke city, Virginia, United States, 24014

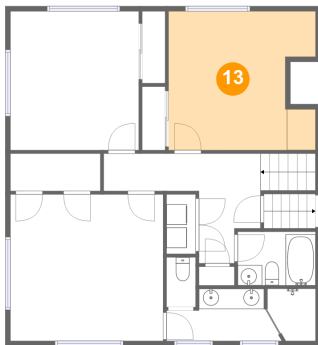
### 12 Floor 3 - Kitchen



Max Dimensions: 15'8" x 14'11"  
Calculated Area: 222 sq. ft  
Included: Yes

Heated: Yes  
Finished: Yes  
Enclosed: Yes  
Contiguous: Yes  
Permitted: Yes  
Wet space: No  
Addition: No  
Conversion: No

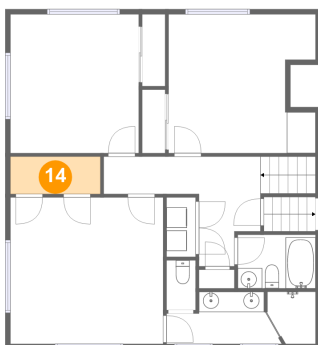
### 13 Floor 4 - Bedroom



Max Dimensions: 14'5" x 13'7"  
Calculated Area: 181 sq. ft  
Included: Yes

Heated: Yes  
Finished: Yes  
Enclosed: Yes  
Contiguous: Yes  
Permitted: Yes  
Wet space: No  
Addition: No  
Conversion: No

### 14 Floor 4 - W.I.C.

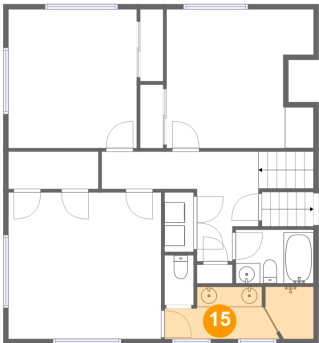


Max Dimensions: 8'10" x 3'8"  
Calculated Area: 32 sq. ft  
Included: Yes

Heated: Yes  
Finished: Yes  
Enclosed: Yes  
Contiguous: Yes  
Permitted: Yes  
Wet space: No  
Addition: No  
Conversion: No

3164 West Ridge Road Southwest, South Roanoke, Roanoke,  
Roanoke city, Virginia, United States, 24014

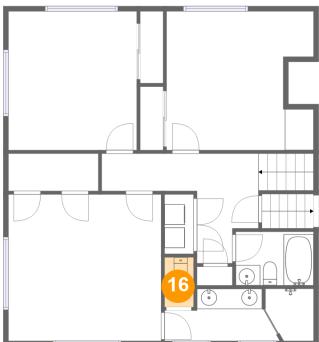
15 Floor 4 - Bath



Max Dimensions: 14'8" x 5'1"  
Calculated Area: 67 sq. ft  
Included: Yes

Heated: Yes  
Finished: Yes  
Enclosed: Yes  
Contiguous: Yes  
Permitted: Yes  
Wet space: Yes  
Addition: No  
Conversion: No

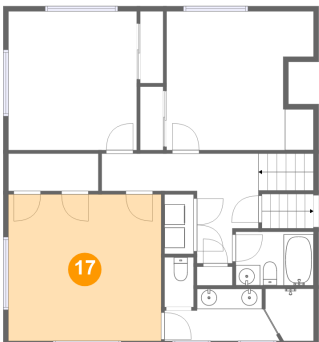
16 Floor 4 - WC



Max Dimensions: 2'10" x 4'11"  
Calculated Area: 14 sq. ft  
Included: Yes

Heated: Yes  
Finished: Yes  
Enclosed: Yes  
Contiguous: Yes  
Permitted: Yes  
Wet space: Yes  
Addition: No  
Conversion: No

17 Floor 4 - Primary Bedroom

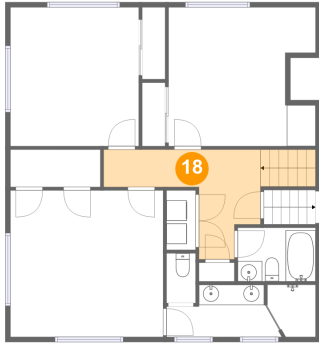


Max Dimensions: 15'0" x 14'4"  
Calculated Area: 215 sq. ft  
Included: Yes

Heated: Yes  
Finished: Yes  
Enclosed: Yes  
Contiguous: Yes  
Permitted: Yes  
Wet space: No  
Addition: No  
Conversion: No

3164 West Ridge Road Southwest, South Roanoke, Roanoke,  
Roanoke city, Virginia, United States, 24014

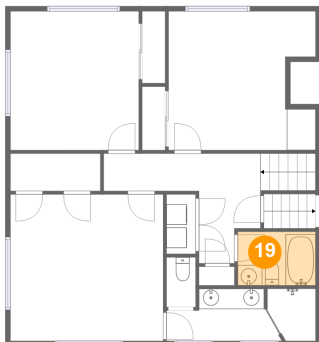
### 18 Floor 4 - Hall



Max Dimensions: 15'4" x 10'9"  
Calculated Area: 110 sq. ft  
Included: Yes

Heated: Yes  
Finished: Yes  
Enclosed: Yes  
Contiguous: Yes  
Permitted: Yes  
Wet space: No  
Addition: No  
Conversion: No

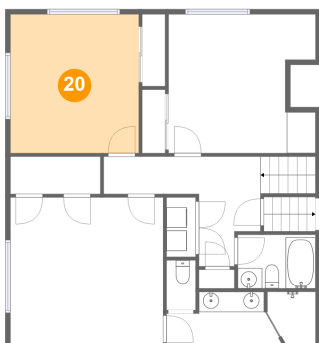
### 19 Floor 4 - Bath



Max Dimensions: 7'7" x 5'3"  
Calculated Area: 40 sq. ft  
Included: Yes

Heated: Yes  
Finished: Yes  
Enclosed: Yes  
Contiguous: Yes  
Permitted: Yes  
Wet space: Yes  
Addition: No  
Conversion: No

### 20 Floor 4 - Bedroom

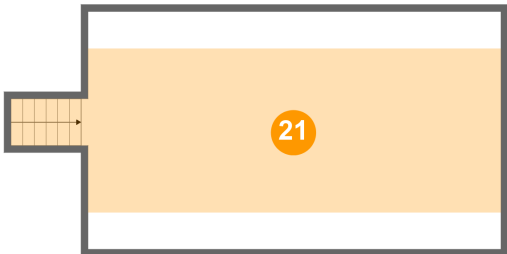


Max Dimensions: 12'7" x 13'7"  
Calculated Area: 172 sq. ft  
Included: Yes

Heated: Yes  
Finished: Yes  
Enclosed: Yes  
Contiguous: Yes  
Permitted: Yes  
Wet space: No  
Addition: No  
Conversion: No

3164 West Ridge Road Southwest, South Roanoke, Roanoke,  
Roanoke city, Virginia, United States, 24014

21 Floor 5 - Attic



Max Dimensions: 30'5" x 17'3"  
Calculated Area: 375 sq. ft  
Included: No

Heated: No  
Finished: No  
Enclosed: Yes  
Contiguous: Yes  
Permitted: Yes  
Wet space: No  
Addition: No  
Conversion: No