

## Home data report

**5819 Longleaf Drive, West Lawrence, Lawrence, Douglas County, Kansas, United States, 66049**



**Total Area: 2229 sq. ft**

Basement: 799 sq. ft, 1st Floor: 1430 sq. ft

Excluded: Basement 589 sq. ft, Garage 417 sq. ft, Screened porch 126 sq. ft, Fireplace 10 sq. ft, Walls: 177 sq. ft

## Property summary



**2**  
Floors



**3**  
Bedrooms



**3**  
Bathrooms



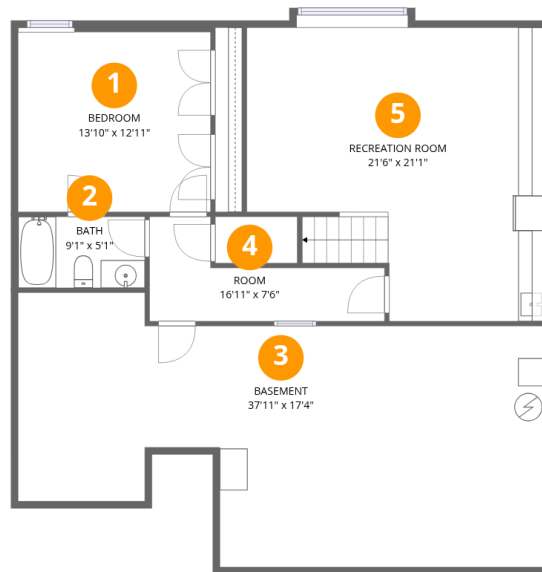
**1**  
Garages

Scan captured on Thu, 21 May 2026 19:15:02 GMT

INTENDED FOR VISUAL LAYOUT. MEASUREMENTS ARE RELIABLE BUT NOT GUARANTEED.

## Home data report

**5819 Longleaf Drive, West Lawrence, Lawrence, Douglas County, Kansas, United States, 66049**



## Room dimensions

Floor 1 Below grade

Total:799sqft

Excluded: 589sqft

#		Dimensions	sqft	Counted as living area
1	Bedroom	13'10" x 12'11"	183 sq. ft	Yes
2	Bath	9'1" x 5'1"	47 sq. ft	Yes
3	Basement	37'11" x 17'4"	589 sq. ft	No
4	Room	16'11" x 7'6"	81 sq. ft	Yes
5	Recreation Room	21'6" x 21'1"	402 sq. ft	Yes

## Home data report

**5819 Longleaf Drive, West Lawrence, Lawrence, Douglas County, Kansas, United States, 66049**



## Room dimensions

Floor 2

Total:1430sqft Excluded: 553sqft

#		Dimensions	sqft	Counted as living area
6	Dining Area	9'5" x 13'3"	125 sq. ft	Yes
7	Hall	17'5" x 8'11"	80 sq. ft	Yes
8	Kitchen	9'1" x 14'0"	128 sq. ft	Yes
9	Breakfast Nook	9'1" x 6'5"	58 sq. ft	Yes
10	Living Room	15'5" x 13'3"	213 sq. ft	Yes
11	Bath	4'7" x 3'4"	15 sq. ft	Yes
12	Bedroom	13'5" x 12'3"	149 sq. ft	Yes
13	Bath	10'0" x 8'7"	68 sq. ft	Yes
14	Primary Bedroom	13'7" x 16'11"	207 sq. ft	Yes
15	Foyer	4'9" x 16'11"	119 sq. ft	Yes
16	Laundry	10'6" x 12'3"	93 sq. ft	Yes

Scan captured on Thu, 21 May 2026 19:15:02 GMT

INTENDED FOR VISUAL LAYOUT. MEASUREMENTS ARE RELIABLE BUT NOT GUARANTEED.

Home data report

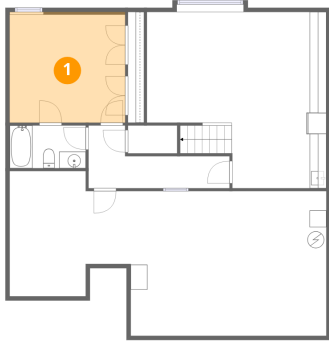
**5819 Longleaf Drive, West Lawrence, Lawrence, Douglas  
County, Kansas, United States, 66049**

#		Dimensions	sqft	Counted as living area
17	W.I.C.	6'9" x 8'7"	58 sq. ft	Yes
18	Garage	21'1" x 19'9"	417 sq. ft	No
19	Screened Porch	11'1" x 11'5"	126 sq. ft	No
20	Bath	7'10" x 4'11"	39 sq. ft	Yes

**5819 Longleaf Drive, West Lawrence, Lawrence, Douglas  
County, Kansas, United States, 66049**

**1 Floor 1 - Bedroom**

---

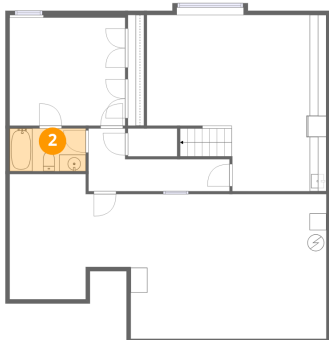


**Dimensions:** 13'10" x 12'11"  
**Area:** 183 sq. ft  
**Counted as living area:** Yes

**Heated:** Yes  
**Finished:** Yes  
**Enclosed:** Yes  
**Contiguous:** Yes  
**Permitted:** Yes  
**Wet space:** No  
**Addition:** No  
**Conversion:** No

**2 Floor 1 - Bath**

---

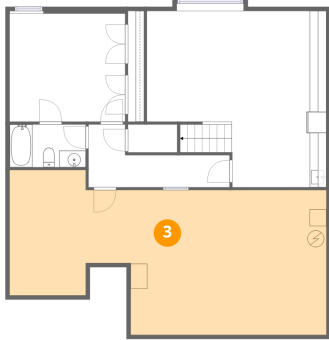


**Dimensions:** 9'1" x 5'1"  
**Area:** 47 sq. ft  
**Counted as living area:** Yes

**Heated:** Yes  
**Finished:** Yes  
**Enclosed:** Yes  
**Contiguous:** Yes  
**Permitted:** Yes  
**Wet space:** Yes  
**Addition:** No  
**Conversion:** No

5819 Longleaf Drive, West Lawrence, Lawrence, Douglas  
County, Kansas, United States, 66049

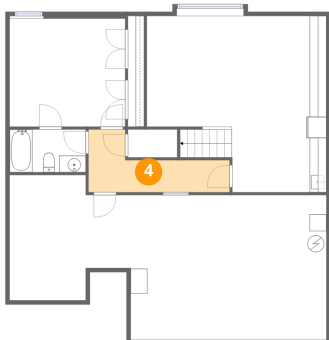
**3** Floor 1 - Basement



Dimensions: 37'11" x 17'4"  
Area: 589 sq. ft  
Counted as living area: No

Heated: Yes  
Finished: No  
Enclosed: Yes  
Contiguous: Yes  
Permitted: Yes  
Wet space: No  
Addition: No  
Conversion: No

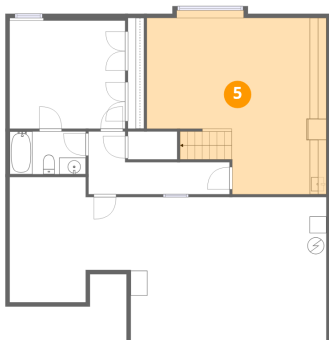
**4** Floor 1 - Room



Dimensions: 16'11" x 7'6"  
Area: 81 sq. ft  
Counted as living area: Yes

Heated: Yes  
Finished: Yes  
Enclosed: Yes  
Contiguous: Yes  
Permitted: Yes  
Wet space: No  
Addition: No  
Conversion: No

**5** Floor 1 - Recreation Room



Dimensions: 21'6" x 21'1"  
Area: 402 sq. ft  
Counted as living area: Yes

Heated: Yes  
Finished: Yes  
Enclosed: Yes  
Contiguous: Yes  
Permitted: Yes  
Wet space: No  
Addition: No  
Conversion: No

5819 Longleaf Drive, West Lawrence, Lawrence, Douglas  
County, Kansas, United States, 66049

**6** Floor 2 - Dining Area

---



Dimensions: 9'5" x 13'3"  
Area: 125 sq. ft  
Counted as living area: Yes

Heated: Yes  
Finished: Yes  
Enclosed: Yes  
Contiguous: Yes  
Permitted: Yes  
Wet space: No  
Addition: No  
Conversion: No

**7** Floor 2 - Hall

---



Dimensions: 17'5" x 8'11"  
Area: 80 sq. ft  
Counted as living area: Yes

Heated: Yes  
Finished: Yes  
Enclosed: Yes  
Contiguous: Yes  
Permitted: Yes  
Wet space: No  
Addition: No  
Conversion: No

**8** Floor 2 - Kitchen

---



Dimensions: 9'1" x 14'0"  
Area: 128 sq. ft  
Counted as living area: Yes

Heated: Yes  
Finished: Yes  
Enclosed: Yes  
Contiguous: Yes  
Permitted: Yes  
Wet space: No  
Addition: No  
Conversion: No

5819 Longleaf Drive, West Lawrence, Lawrence, Douglas  
County, Kansas, United States, 66049

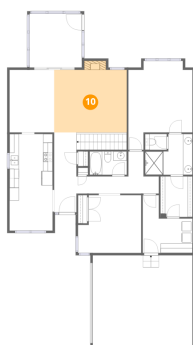
9 Floor 2 - Breakfast Nook



Dimensions: 9'1" x 6'5"  
Area: 58 sq. ft  
Counted as living area: Yes

Heated: Yes  
Finished: Yes  
Enclosed: Yes  
Contiguous: Yes  
Permitted: Yes  
Wet space: No  
Addition: No  
Conversion: No

10 Floor 2 - Living Room



Dimensions: 15'5" x 13'3"  
Area: 213 sq. ft  
Counted as living area: Yes

Heated: Yes  
Finished: Yes  
Enclosed: Yes  
Contiguous: Yes  
Permitted: Yes  
Wet space: No  
Addition: No  
Conversion: No

11 Floor 2 - Bath



Dimensions: 4'7" x 3'4"  
Area: 15 sq. ft  
Counted as living area: Yes

Heated: Yes  
Finished: Yes  
Enclosed: Yes  
Contiguous: Yes  
Permitted: Yes  
Wet space: Yes  
Addition: No  
Conversion: No

5819 Longleaf Drive, West Lawrence, Lawrence, Douglas  
County, Kansas, United States, 66049

**12** Floor 2 - Bedroom



Dimensions: 13'5" x 12'3"  
Area: 149 sq. ft  
Counted as living area: Yes

Heated: Yes  
Finished: Yes  
Enclosed: Yes  
Contiguous: Yes  
Permitted: Yes  
Wet space: No  
Addition: No  
Conversion: No

**13** Floor 2 - Bath



Dimensions: 10'0" x 8'7"  
Area: 68 sq. ft  
Counted as living area: Yes

Heated: Yes  
Finished: Yes  
Enclosed: Yes  
Contiguous: Yes  
Permitted: Yes  
Wet space: Yes  
Addition: No  
Conversion: No

**14** Floor 2 - Primary Bedroom



Dimensions: 13'7" x 16'11"  
Area: 207 sq. ft  
Counted as living area: Yes

Heated: Yes  
Finished: Yes  
Enclosed: Yes  
Contiguous: Yes  
Permitted: Yes  
Wet space: No  
Addition: No  
Conversion: No

5819 Longleaf Drive, West Lawrence, Lawrence, Douglas  
County, Kansas, United States, 66049

**15** Floor 2 - Foyer



Dimensions: 4'9" x 16'11"  
Area: 119 sq. ft  
Counted as living area: Yes

Heated: Yes  
Finished: Yes  
Enclosed: Yes  
Contiguous: Yes  
Permitted: Yes  
Wet space: No  
Addition: No  
Conversion: No

**16** Floor 2 - Laundry



Dimensions: 10'6" x 12'3"  
Area: 93 sq. ft  
Counted as living area: Yes

Heated: Yes  
Finished: Yes  
Enclosed: Yes  
Contiguous: Yes  
Permitted: Yes  
Wet space: No  
Addition: No  
Conversion: No

**17** Floor 2 - W.I.C.



Dimensions: 6'9" x 8'7"  
Area: 58 sq. ft  
Counted as living area: Yes

Heated: Yes  
Finished: Yes  
Enclosed: Yes  
Contiguous: Yes  
Permitted: Yes  
Wet space: No  
Addition: No  
Conversion: No

5819 Longleaf Drive, West Lawrence, Lawrence, Douglas  
County, Kansas, United States, 66049

**18** Floor 2 - Garage



Dimensions: 21'1" x 19'9"  
Area: 417 sq. ft  
Counted as living area: No

Heated: No  
Finished: No  
Enclosed: Yes  
Contiguous: Yes  
Permitted: Yes  
Wet space: No  
Addition: No  
Conversion: No

**19** Floor 2 - Screened Porch



Dimensions: 11'1" x 11'5"  
Area: 126 sq. ft  
Counted as living area: No

Heated: No  
Finished: No  
Enclosed: No  
Contiguous: Yes  
Permitted: Yes  
Wet space: No  
Addition: No  
Conversion: No

**20** Floor 2 - Bath



Dimensions: 7'10" x 4'11"  
Area: 39 sq. ft  
Counted as living area: Yes

Heated: Yes  
Finished: Yes  
Enclosed: Yes  
Contiguous: Yes  
Permitted: Yes  
Wet space: Yes  
Addition: No  
Conversion: No