

50 Southwoods Cres, Barrie, ON, CA




Total Area: 1425 sq. ft

Basement 1: 397 sq. ft, 1st Floor: 468 sq. ft, 2nd Floor: 560 sq. ft

Excluded: Utility 72 sq. ft, Garage 175 sq. ft, Porch 65 sq. ft, Walls: 120 sq. ft

Property summary

 **3** Floors

 **3** Bedrooms

 **2** Bathrooms

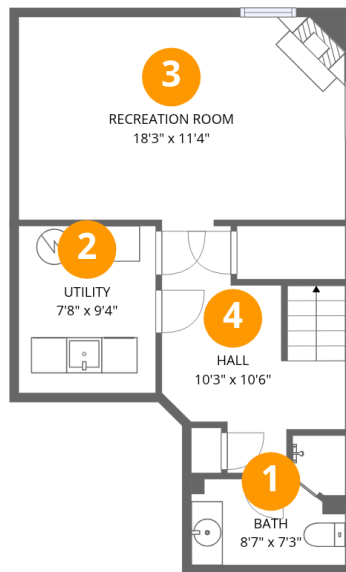
Home data report

50 Southwoods Cres, Barrie, ON, CA

 **1**
Half baths

 **1**
Garages

50 Southwoods Cres, Barrie, ON, CA



Room dimensions

Floor 1 Below grade

Total: 397 sqft Excluded: 72 sqft

| # | | Dimensions | sqft | Counted as living area |
|---|-----------------|---------------|------------|------------------------|
| 1 | Bath | 8'7" x 7'3" | 62 sq. ft | Yes |
| 2 | Utility | 7'8" x 9'4" | 72 sq. ft | No |
| 3 | Recreation Room | 18'3" x 11'4" | 207 sq. ft | Yes |
| 4 | Hall | 10'3" x 10'6" | 108 sq. ft | Yes |

50 Southwoods Cres, Barrie, ON, CA



Room dimensions

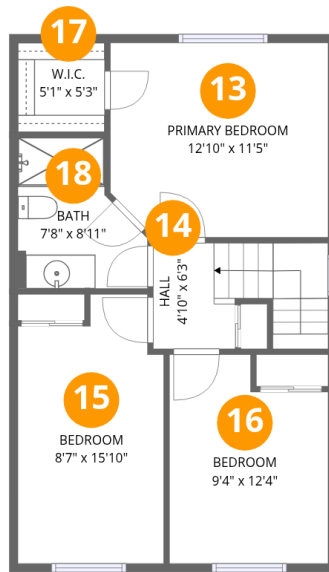
Floor 2

Total: 468sqft

Excluded: 240sqft

| # | | Dimensions | sqft | Counted as living area |
|----|-------------|---------------|------------|------------------------|
| 5 | Bath | 3'6" x 7'3" | 26 sq. ft | Yes |
| 6 | Porch | 8'9" x 4'3" | 37 sq. ft | No |
| 7 | Garage | 9'2" x 19'3" | 176 sq. ft | No |
| 8 | Hall | 10'3" x 11'8" | 120 sq. ft | Yes |
| 9 | Living Room | 10'3" x 11'5" | 117 sq. ft | Yes |
| 10 | Foyer | 4'9" x 7'7" | 36 sq. ft | Yes |
| 11 | Kitchen | 8'0" x 9'5" | 75 sq. ft | Yes |
| 12 | Dining Area | 8'0" x 11'7" | 93 sq. ft | Yes |

50 Southwoods Cres, Barrie, ON, CA



Room dimensions

Floor 3

Total: 560 sqft

Excluded: 0 sqft

| # | | Dimensions | sqft | Counted as living area |
|----|-----------------|----------------|------------|------------------------|
| 13 | Primary Bedroom | 12'10" x 11'5" | 147 sq. ft | Yes |
| 14 | Hall | 4'10" x 6'3" | 30 sq. ft | Yes |
| 15 | Bedroom | 8'7" x 15'10" | 136 sq. ft | Yes |
| 16 | Bedroom | 9'4" x 12'4" | 115 sq. ft | Yes |
| 17 | W.I.C. | 5'1" x 5'3" | 27 sq. ft | Yes |
| 18 | Bath | 7'8" x 8'11" | 68 sq. ft | Yes |

1 Floor 1 - Bath



Dimensions: 8'7" x 7'3"
Area: 62 sq. ft
Counted as living area: Yes

Heated: Yes
Finished: Yes
Enclosed: Yes
Contiguous: Yes
Permitted: Yes
Wet space: Yes
Addition: No
Conversion: No

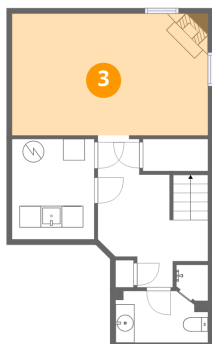
2 Floor 1 - Utility



Dimensions: 7'8" x 9'4"
Area: 72 sq. ft
Counted as living area: No

Heated: Yes
Finished: No
Enclosed: Yes
Contiguous: Yes
Permitted: Yes
Wet space: No
Addition: No
Conversion: No

3 Floor 1 - Recreation Room



Dimensions: 18'3" x 11'4"
Area: 207 sq. ft
Counted as living area: Yes

Heated: Yes
Finished: Yes
Enclosed: Yes
Contiguous: Yes
Permitted: Yes
Wet space: No
Addition: No
Conversion: No

4 Floor 1 - Hall



Dimensions: 10'3" x 10'6"
Area: 108 sq. ft
Counted as living area: Yes

Heated: Yes
Finished: Yes
Enclosed: Yes
Contiguous: Yes
Permitted: Yes
Wet space: No
Addition: No
Conversion: No

5 Floor 2 - Bath



Dimensions: 3'6" x 7'3"
Area: 26 sq. ft
Counted as living area: Yes

Heated: Yes
Finished: Yes
Enclosed: Yes
Contiguous: Yes
Permitted: Yes
Wet space: Yes
Addition: No
Conversion: No

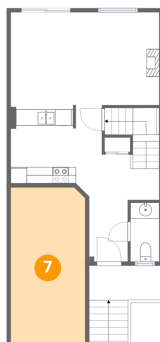
6 Floor 2 - Porch



Dimensions: 8'9" x 4'3"
Area: 37 sq. ft
Counted as living area: No

Heated: No
Finished: No
Enclosed: No
Contiguous: Yes
Permitted: Yes
Wet space: No
Addition: No
Conversion: No

7 Floor 2 - Garage



Dimensions: 9'2" x 19'3"
Area: 176 sq. ft
Counted as living area: No

Heated: No
Finished: No
Enclosed: Yes
Contiguous: Yes
Permitted: Yes
Wet space: No
Addition: No
Conversion: No

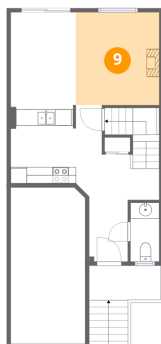
8 Floor 2 - Hall



Dimensions: 10'3" x 11'8"
Area: 120 sq. ft
Counted as living area: Yes

Heated: Yes
Finished: Yes
Enclosed: Yes
Contiguous: Yes
Permitted: Yes
Wet space: No
Addition: No
Conversion: No

9 Floor 2 - Living Room



Dimensions: 10'3" x 11'5"
Area: 117 sq. ft
Counted as living area: Yes

Heated: Yes
Finished: Yes
Enclosed: Yes
Contiguous: Yes
Permitted: Yes
Wet space: No
Addition: No
Conversion: No

10 Floor 2 - Foyer



Dimensions: 4'9" x 7'7"
Area: 36 sq. ft
Counted as living area: Yes

Heated: Yes
Finished: Yes
Enclosed: Yes
Contiguous: Yes
Permitted: Yes
Wet space: No
Addition: No
Conversion: No

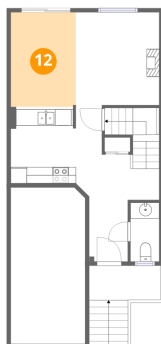
11 Floor 2 - Kitchen



Dimensions: 8'0" x 9'5"
Area: 75 sq. ft
Counted as living area: Yes

Heated: Yes
Finished: Yes
Enclosed: Yes
Contiguous: Yes
Permitted: Yes
Wet space: No
Addition: No
Conversion: No

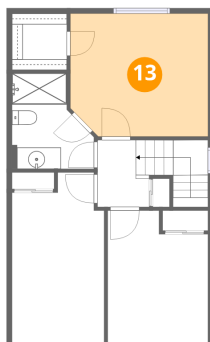
12 Floor 2 - Dining Area



Dimensions: 8'0" x 11'7"
Area: 93 sq. ft
Counted as living area: Yes

Heated: Yes
Finished: Yes
Enclosed: Yes
Contiguous: Yes
Permitted: Yes
Wet space: No
Addition: No
Conversion: No

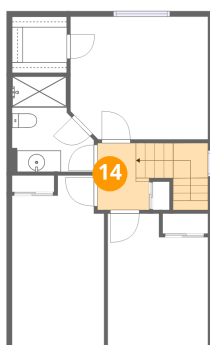
13 Floor 3 - Primary Bedroom



Dimensions: 12'10" x 11'5"
Area: 147 sq. ft
Counted as living area: Yes

Heated: Yes
Finished: Yes
Enclosed: Yes
Contiguous: Yes
Permitted: Yes
Wet space: No
Addition: No
Conversion: No

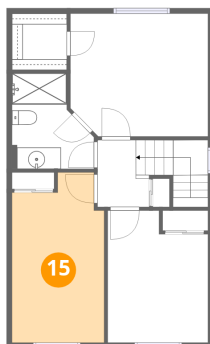
14 Floor 3 - Hall



Dimensions: 4'10" x 6'3"
Area: 30 sq. ft
Counted as living area: Yes

Heated: Yes
Finished: Yes
Enclosed: Yes
Contiguous: Yes
Permitted: Yes
Wet space: No
Addition: No
Conversion: No

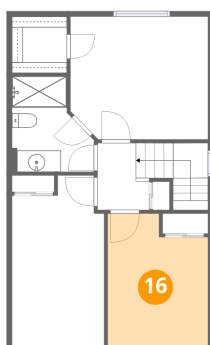
15 Floor 3 - Bedroom



Dimensions: 8'7" x 15'10"
Area: 136 sq. ft
Counted as living area: Yes

Heated: Yes
Finished: Yes
Enclosed: Yes
Contiguous: Yes
Permitted: Yes
Wet space: No
Addition: No
Conversion: No

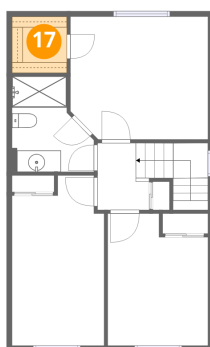
16 Floor 3 - Bedroom



Dimensions: 9'4" x 12'4"
Area: 115 sq. ft
Counted as living area: Yes

Heated: Yes
Finished: Yes
Enclosed: Yes
Contiguous: Yes
Permitted: Yes
Wet space: No
Addition: No
Conversion: No

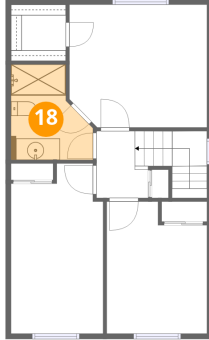
17 Floor 3 - W.I.C.



Dimensions: 5'1" x 5'3"
Area: 27 sq. ft
Counted as living area: Yes

Heated: Yes
Finished: Yes
Enclosed: Yes
Contiguous: Yes
Permitted: Yes
Wet space: No
Addition: No
Conversion: No

18 Floor 3 - Bath



Dimensions: 7'8" x 8'11"
Area: 68 sq. ft
Counted as living area: Yes

Heated: Yes
Finished: Yes
Enclosed: Yes
Contiguous: Yes
Permitted: Yes
Wet space: Yes
Addition: No
Conversion: No