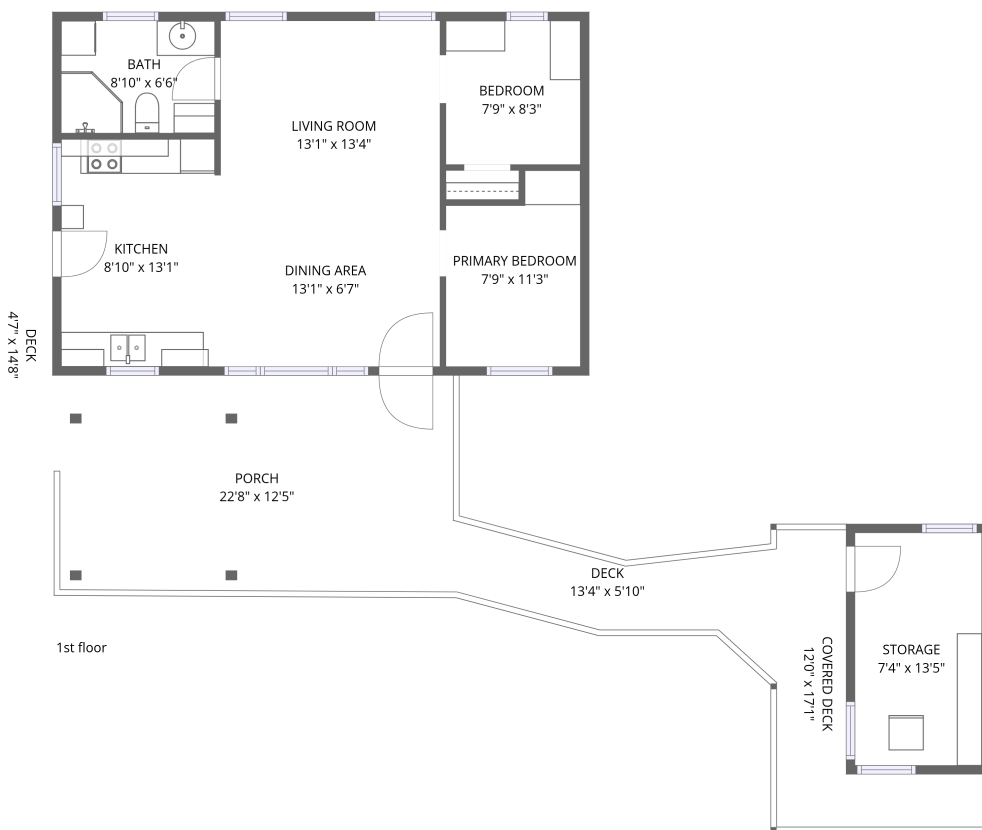


Fifes Bay Marina Ln, Selwyn, ON, CA



Total Area: 595 sq. ft

1st Floor: 595 sq. ft

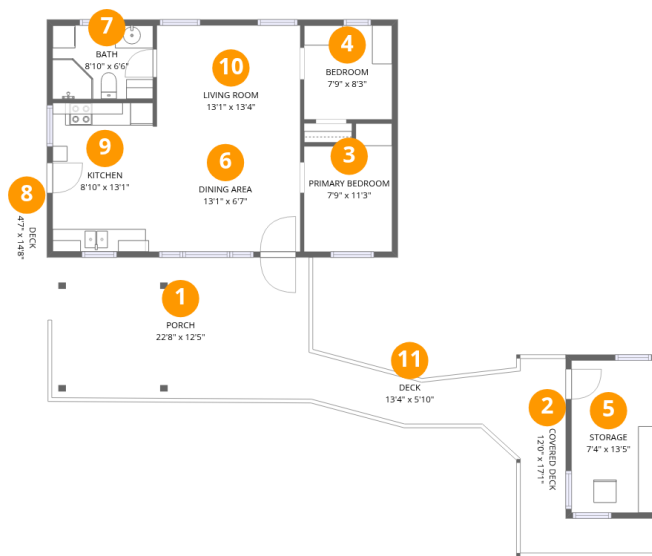
Excluded: Storage 98 sq. ft, Covered deck 93 sq. ft, Deck 144 sq. ft, Porch 281 sq. ft,

Walls: 71 sq. ft

Property summary



Fifes Bay Marina Ln, Selwyn, ON, CA



Room dimensions

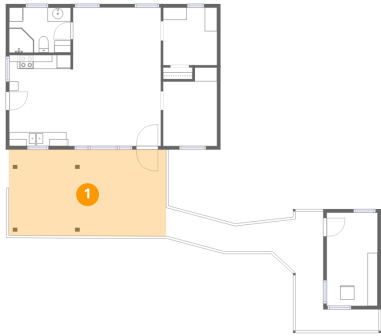
Floor 1

Total: 595 sqft

Excluded: 616 sqft

#		Dimensions	sqft	Counted as living area
1	Porch	22'8" x 12'5"	281 sq. ft	No
2	Covered Deck	12'0" x 17'1"	93 sq. ft	No
3	Primary Bedroom	7'9" x 11'3"	78 sq. ft	Yes
4	Bedroom	7'9" x 8'3"	64 sq. ft	Yes
5	Storage	7'4" x 13'5"	98 sq. ft	No
6	Dining Area	13'1" x 6'7"	86 sq. ft	Yes
7	Bath	8'10" x 6'6"	57 sq. ft	Yes
8	Deck	4'7" x 14'8"	63 sq. ft	No
9	Kitchen	8'10" x 13'1"	114 sq. ft	Yes
10	Living Room	13'1" x 13'4"	170 sq. ft	Yes
11	Deck	13'4" x 5'10"	81 sq. ft	No

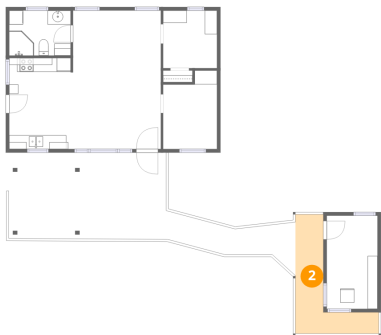
1 Floor 1 - Porch



Dimensions: 22'8" x 12'5"
Area: 281 sq. ft
Counted as living area: No

Heated: No
Finished: No
Enclosed: No
Contiguous: Yes
Permitted: Yes
Wet space: No
Addition: No
Conversion: No

2 Floor 1 - Covered Deck



Dimensions: 12'0" x 17'1"
Area: 93 sq. ft
Counted as living area: No

Heated: No
Finished: No
Enclosed: No
Contiguous: Yes
Permitted: Yes
Wet space: No
Addition: No
Conversion: No

3 Floor 1 - Primary Bedroom



Dimensions: 7'9" x 11'3"
Area: 78 sq. ft
Counted as living area: Yes

Heated: Yes
Finished: Yes
Enclosed: Yes
Contiguous: Yes
Permitted: Yes
Wet space: No
Addition: No
Conversion: No

4 Floor 1 - Bedroom



Dimensions: 7'9" x 8'3"
Area: 64 sq. ft
Counted as living area: Yes

Heated: Yes
Finished: Yes
Enclosed: Yes
Contiguous: Yes
Permitted: Yes
Wet space: No
Addition: No
Conversion: No

5 Floor 1 - Storage



Dimensions: 7'4" x 13'5"
Area: 98 sq. ft
Counted as living area: No

Heated: No
Finished: No
Enclosed: No
Contiguous: Yes
Permitted: Yes
Wet space: No
Addition: No
Conversion: No

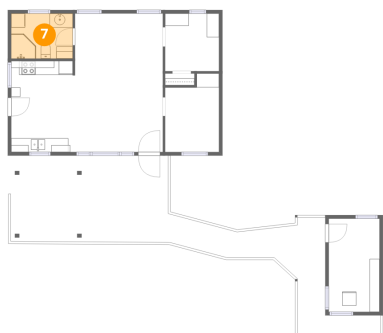
6 Floor 1 - Dining Area



Dimensions: 13'1" x 6'7"
Area: 86 sq. ft
Counted as living area: Yes

Heated: Yes
Finished: Yes
Enclosed: Yes
Contiguous: Yes
Permitted: Yes
Wet space: No
Addition: No
Conversion: No

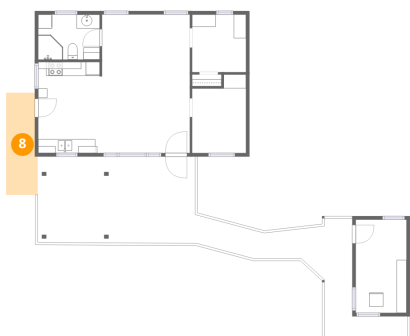
7 Floor 1 - Bath



Dimensions: 8'10" x 6'6"
Area: 57 sq. ft
Counted as living area: Yes

Heated: Yes
Finished: Yes
Enclosed: Yes
Contiguous: Yes
Permitted: Yes
Wet space: Yes
Addition: No
Conversion: No

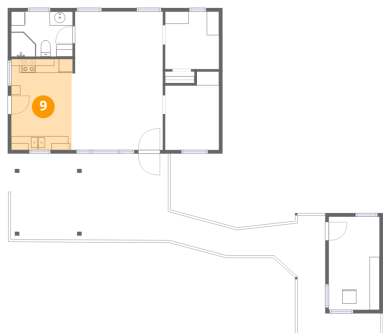
8 Floor 1 - Deck



Dimensions: 4'7" x 14'8"
Area: 63 sq. ft
Counted as living area: No

Heated: No
Finished: No
Enclosed: No
Contiguous: Yes
Permitted: Yes
Wet space: No
Addition: No
Conversion: No

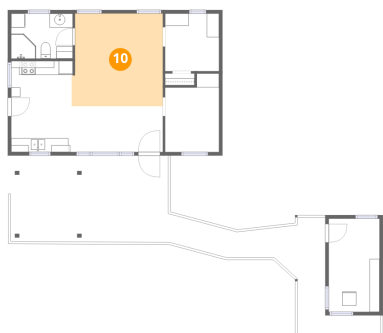
9 Floor 1 - Kitchen



Dimensions: 8'10" x 13'1"
Area: 114 sq. ft
Counted as living area: Yes

Heated: Yes
Finished: Yes
Enclosed: Yes
Contiguous: Yes
Permitted: Yes
Wet space: No
Addition: No
Conversion: No

10 Floor 1 - Living Room



Dimensions: 13'1" x 13'4"
Area: 170 sq. ft
Counted as living area: Yes

Heated: Yes
Finished: Yes
Enclosed: Yes
Contiguous: Yes
Permitted: Yes
Wet space: No
Addition: No
Conversion: No

11 Floor 1 - Deck



Dimensions: 13'4" x 5'10"
Area: 81 sq. ft
Counted as living area: No

Heated: No
Finished: No
Enclosed: No
Contiguous: Yes
Permitted: Yes
Wet space: No
Addition: No
Conversion: No