

Home data report

2813 Maywood Drive, Forest Grove, Washington County, Oregon,
United States, 97116



Total Area: 1673 sq. ft
1st Floor: 1673 sq. ft
Excluded: Utility 115 sq. ft, Deck 429 sq. ft, Walls: 102 sq. ft

Property summary

 **1** Floors

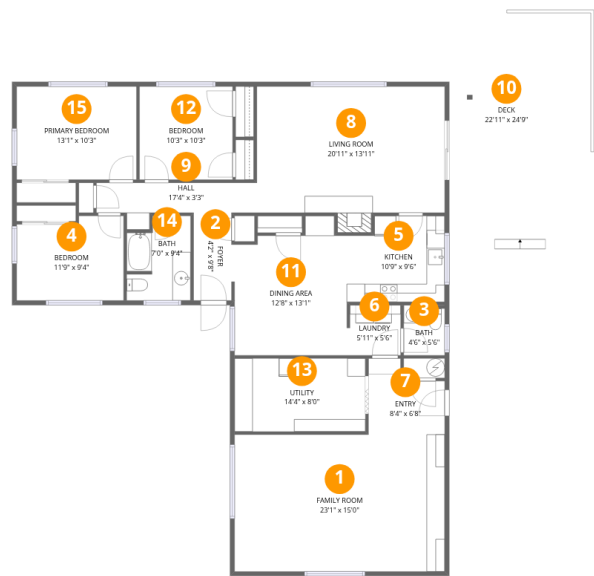
 **3** Bedrooms

 **1** Bathrooms

 **1** Half baths

Home data report

2813 Maywood Drive, Forest Grove, Washington County, Oregon,
United States, 97116



Room dimensions

Floor 1 Total:1673sqft Excluded: 544sqft

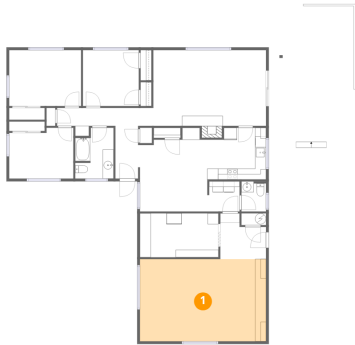
#		Dimensions	sqft	Counted as living area
1	Family Room	23'1" x 15'0"	346 sq. ft	Yes
2	Foyer	4'2" x 9'8"	40 sq. ft	Yes
3	Bath	4'6" x 5'6"	25 sq. ft	Yes
4	Bedroom	11'9" x 9'4"	109 sq. ft	Yes
5	Kitchen	10'9" x 9'6"	101 sq. ft	Yes
6	Laundry	5'11" x 5'6"	33 sq. ft	Yes
7	Entry	8'4" x 6'8"	56 sq. ft	Yes
8	Living Room	20'11" x 13'11"	290 sq. ft	Yes
9	Hall	17'4" x 3'3"	57 sq. ft	Yes
10	Deck	22'11" x 24'9"	568 sq. ft	No
11	Dining Area	12'8" x 13'1"	166 sq. ft	Yes

Home data report

**2813 Maywood Drive, Forest Grove, Washington County, Oregon,
United States, 97116**

#		Dimensions	sqft	Counted as living area
12	Bedroom	10'3" x 10'3"	105 sq. ft	Yes
13	Utility	14'4" x 8'0"	115 sq. ft	No
14	Bath	7'0" x 9'4"	65 sq. ft	Yes
15	Primary Bedroom	13'1" x 10'3"	134 sq. ft	Yes

1 Floor 1 - Family Room



Dimensions: 23'1" x 15'0"
Area: 346 sq. ft
Counted as living area: Yes

Heated: Yes
Finished: Yes
Enclosed: Yes
Contiguous: Yes
Permitted: Yes
Wet space: No
Addition: No
Conversion: No

2 Floor 1 - Foyer



Dimensions: 4'2" x 9'8"
Area: 40 sq. ft
Counted as living area: Yes

Heated: Yes
Finished: Yes
Enclosed: Yes
Contiguous: Yes
Permitted: Yes
Wet space: No
Addition: No
Conversion: No

2813 Maywood Drive, Forest Grove, Washington County, Oregon,
United States, 97116

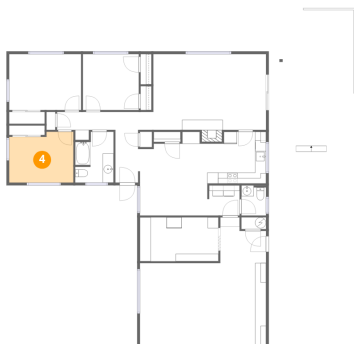
3 Floor 1 - Bath



Dimensions: 4'6" x 5'6"
Area: 25 sq. ft
Counted as living area: Yes

Heated: Yes
Finished: Yes
Enclosed: Yes
Contiguous: Yes
Permitted: Yes
Wet space: Yes
Addition: No
Conversion: No

4 Floor 1 - Bedroom



Dimensions: 11'9" x 9'4"
Area: 109 sq. ft
Counted as living area: Yes

Heated: Yes
Finished: Yes
Enclosed: Yes
Contiguous: Yes
Permitted: Yes
Wet space: No
Addition: No
Conversion: No

5 Floor 1 - Kitchen



Dimensions: 10'9" x 9'6"
Area: 101 sq. ft
Counted as living area: Yes

Heated: Yes
Finished: Yes
Enclosed: Yes
Contiguous: Yes
Permitted: Yes
Wet space: No
Addition: No
Conversion: No

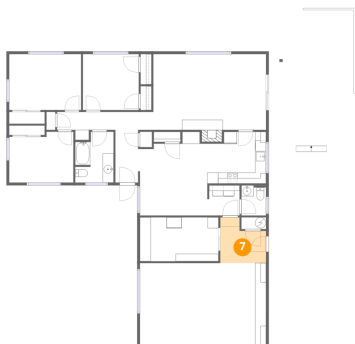
6 Floor 1 - Laundry



Dimensions: 5'11" x 5'6"
Area: 33 sq. ft
Counted as living area: Yes

Heated: Yes
Finished: Yes
Enclosed: Yes
Contiguous: Yes
Permitted: Yes
Wet space: No
Addition: No
Conversion: No

7 Floor 1 - Entry



Dimensions: 8'4" x 6'8"
Area: 56 sq. ft
Counted as living area: Yes

Heated: Yes
Finished: Yes
Enclosed: Yes
Contiguous: Yes
Permitted: Yes
Wet space: No
Addition: No
Conversion: No

8 Floor 1 - Living Room



Dimensions: 20'11" x 13'11"
Area: 290 sq. ft
Counted as living area: Yes

Heated: Yes
Finished: Yes
Enclosed: Yes
Contiguous: Yes
Permitted: Yes
Wet space: No
Addition: No
Conversion: No

2813 Maywood Drive, Forest Grove, Washington County, Oregon,
United States, 97116

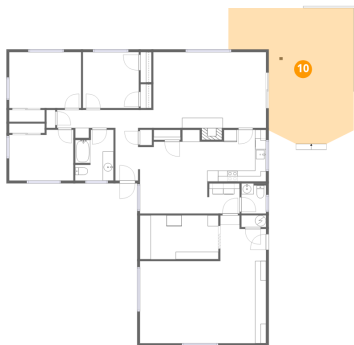
9 Floor 1 - Hall



Dimensions: 17'4" x 3'3"
Area: 57 sq. ft
Counted as living area: Yes

Heated: Yes
Finished: Yes
Enclosed: Yes
Contiguous: Yes
Permitted: Yes
Wet space: No
Addition: No
Conversion: No

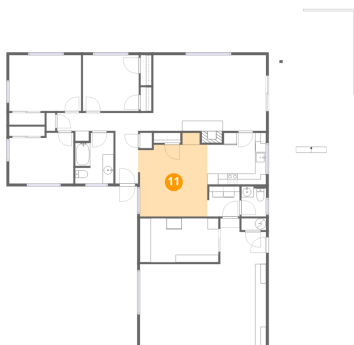
10 Floor 1 - Deck



Dimensions: 22'11" x 24'9"
Area: 568 sq. ft
Counted as living area: No

Heated: No
Finished: No
Enclosed: No
Contiguous: Yes
Permitted: Yes
Wet space: No
Addition: No
Conversion: No

11 Floor 1 - Dining Area

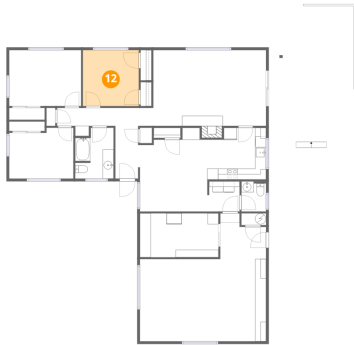


Dimensions: 12'8" x 13'1"
Area: 166 sq. ft
Counted as living area: Yes

Heated: Yes
Finished: Yes
Enclosed: Yes
Contiguous: Yes
Permitted: Yes
Wet space: No
Addition: No
Conversion: No

2813 Maywood Drive, Forest Grove, Washington County, Oregon,
United States, 97116

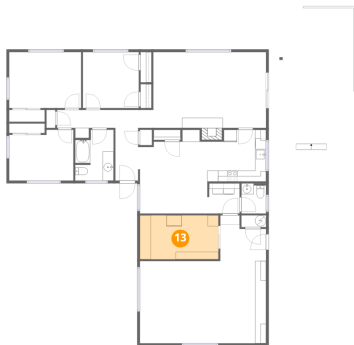
12 Floor 1 - Bedroom



Dimensions: 10'3" x 10'3"
Area: 105 sq. ft
Counted as living area: Yes

Heated: Yes
Finished: Yes
Enclosed: Yes
Contiguous: Yes
Permitted: Yes
Wet space: No
Addition: No
Conversion: No

13 Floor 1 - Utility



Dimensions: 14'4" x 8'0"
Area: 115 sq. ft
Counted as living area: No

Heated: Yes
Finished: No
Enclosed: Yes
Contiguous: Yes
Permitted: Yes
Wet space: No
Addition: No
Conversion: No

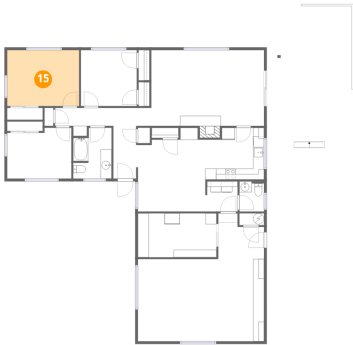
14 Floor 1 - Bath



Dimensions: 7'0" x 9'4"
Area: 65 sq. ft
Counted as living area: Yes

Heated: Yes
Finished: Yes
Enclosed: Yes
Contiguous: Yes
Permitted: Yes
Wet space: Yes
Addition: No
Conversion: No

15 Floor 1 - Primary Bedroom



Dimensions: 13'1" x 10'3"
Area: 134 sq. ft
Counted as living area: Yes

Heated: Yes
Finished: Yes
Enclosed: Yes
Contiguous: Yes
Permitted: Yes
Wet space: No
Addition: No
Conversion: No