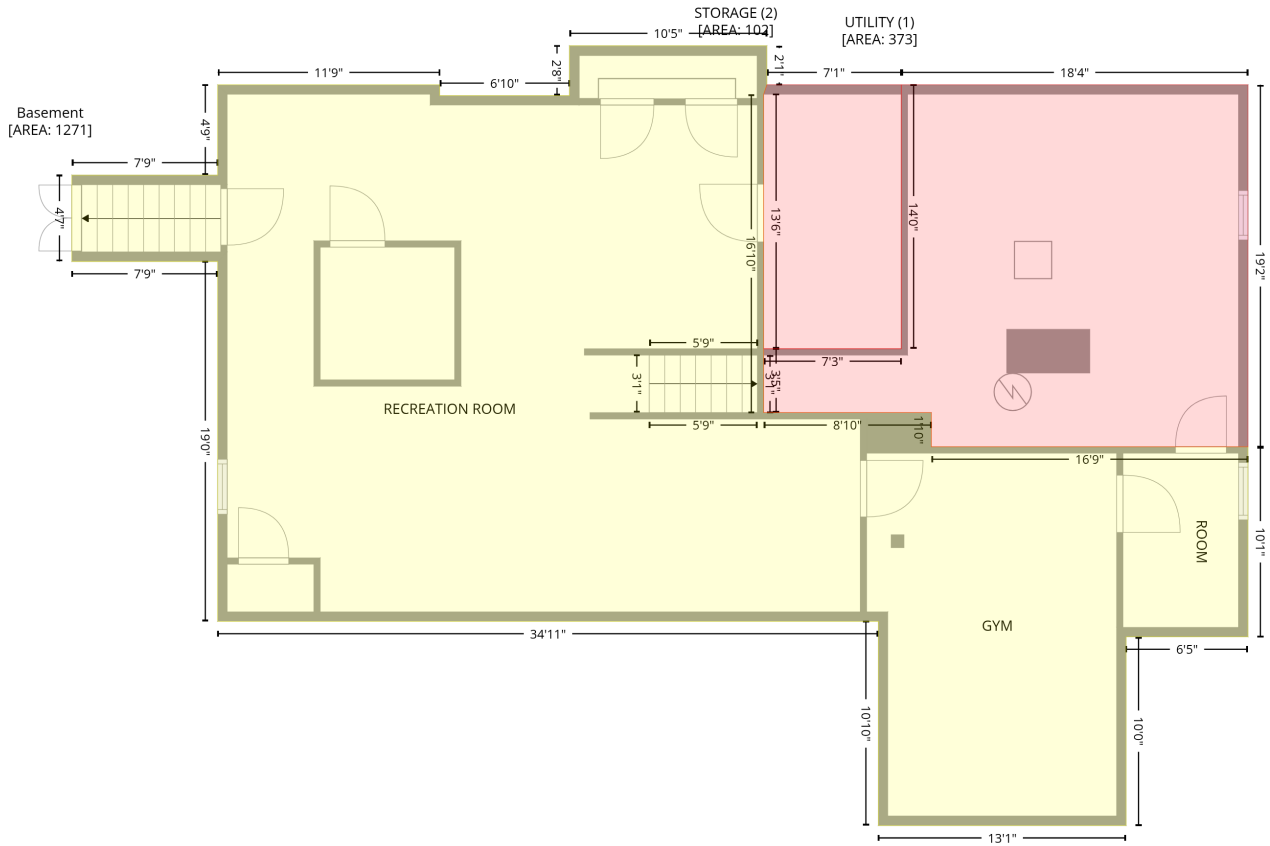


# 15 River Meadow Drive, West Newbury, MA, US

Gross Living Area: 4185 sq. ft

## Level 1 - Below Grade

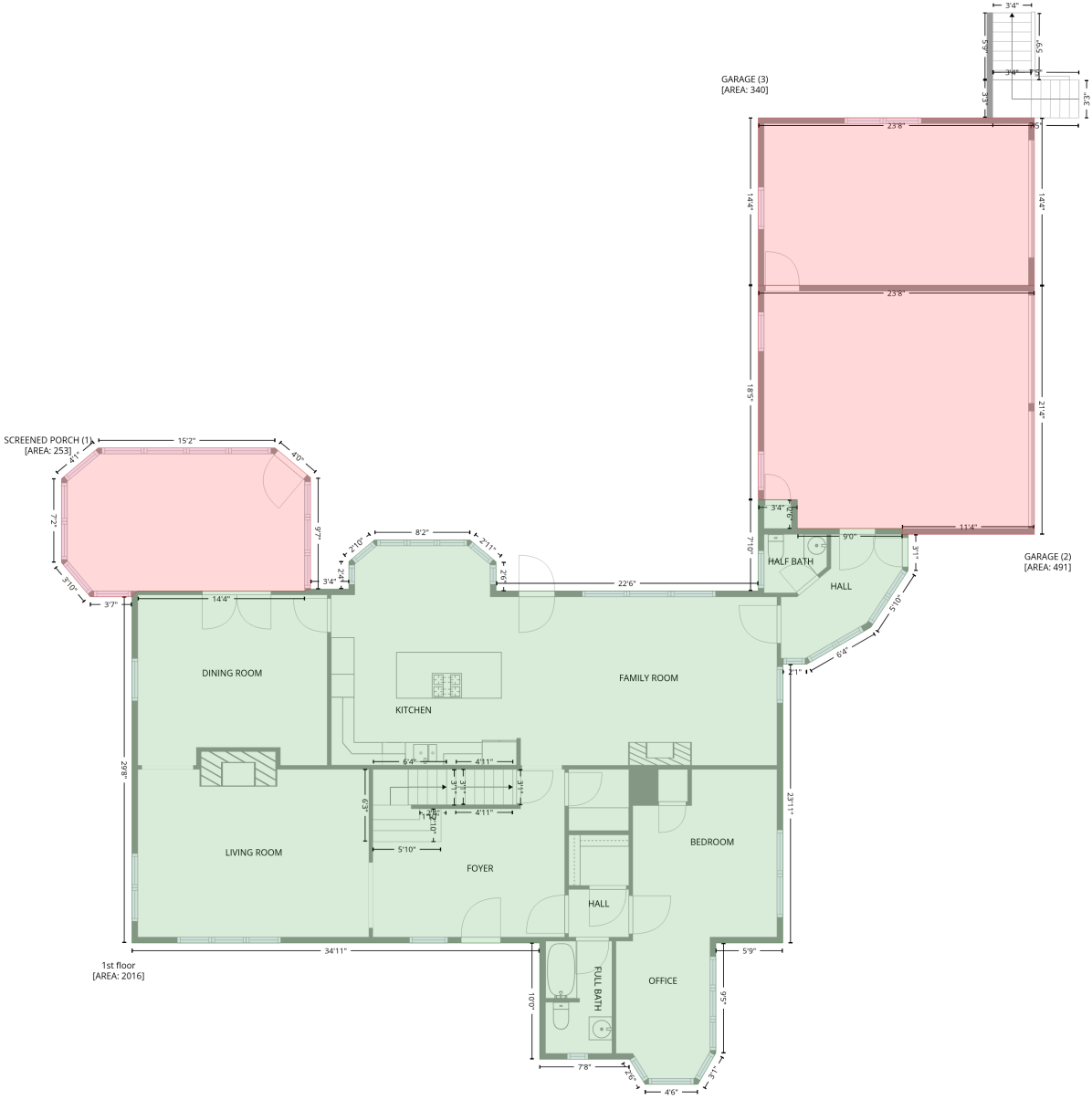


Space	Area (sq. ft)	Calculation
Basement (Living area)	1271	Coordinate Polygon Area Algorithm using inches $-((509.3 + 509.3) * (546.4 - 571.2) + (509.3 + 507.3) * (571.2 - 577.2) + (507.3 + 507.3) * (577.2 - 779.2) + (507.3 + 613.7) * (779.2 - 779.2) + (613.7 + 613.7) * (779.2 - 800.9) + (613.7 + 814.7) * (800.9 - 800.9) + (814.7 + 814.7) * (800.9 - 921.5) + (814.7 + 737.4) * (921.5 - 921.5) + (737.4 + 737.4) * (921.5 - 1041.2) + (737.4 + 580.1) * (1041.2 - 1041.2) + (580.1 + 580.1) * (1041.2 - 911.6) + (580.1 + 160.7) * (911.6 - 911.6) + (160.7 + 160.7) * (911.6 - 683.3) + (160.7 + 68.2) * (683.3 - 683.3) + (68.2 + 68.2) * (683.3 - 628.4) + (68.2 + 160.7) * (628.4 - 628.4) + (160.7 + 160.7) * (628.4 - 571.2) + (160.7 + 301.6) * (571.2 - 571.2) + (301.6 + 301.6) * (571.2 - 578) + (301.6 + 384) * (578 - 578) + (384 + 384) * (578 - 546.4) + (384 + 509.3) * (546.4 - 546.4)) * 0.5 * 0.00694$
UTILITY (Non-living area)	373	$-((814.7 + 814.7) * (571.2 - 800.9) + (814.7 + 613.7) * (800.9 - 800.9) + (613.7 + 613.7) * (800.9 - 779.2) + (613.7 + 507.3) * (779.2 - 779.2) + (507.3 + 507.3) * (779.2 - 738.7) + (507.3 + 594.6) * (738.7 - 738.7) + (594.6 + 594.6) * (738.7 - 571.2) + (594.6 + 814.7) * (571.2 - 571.2)) * 0.5 * 0.00694$
STORAGE (Non-living area)	102	$-((594.6 + 594.6) * (571.2 - 738.7) + (594.6 + 507.3) * (738.7 - 738.7) + (507.3 + 507.3) * (738.7 - 577.2) + (507.3 + 509.3) * (577.2 - 571.2) + (509.3 + 594.6) * (571.2 - 571.2)) * 0.5 * 0.00694$

# 15 River Meadow Drive, West Newbury, MA, US

Gross Living Area: 4185 sq. ft

## Level 2



# 15 River Meadow Drive, West Newbury, MA, US

Gross Living Area: 4185 sq. ft

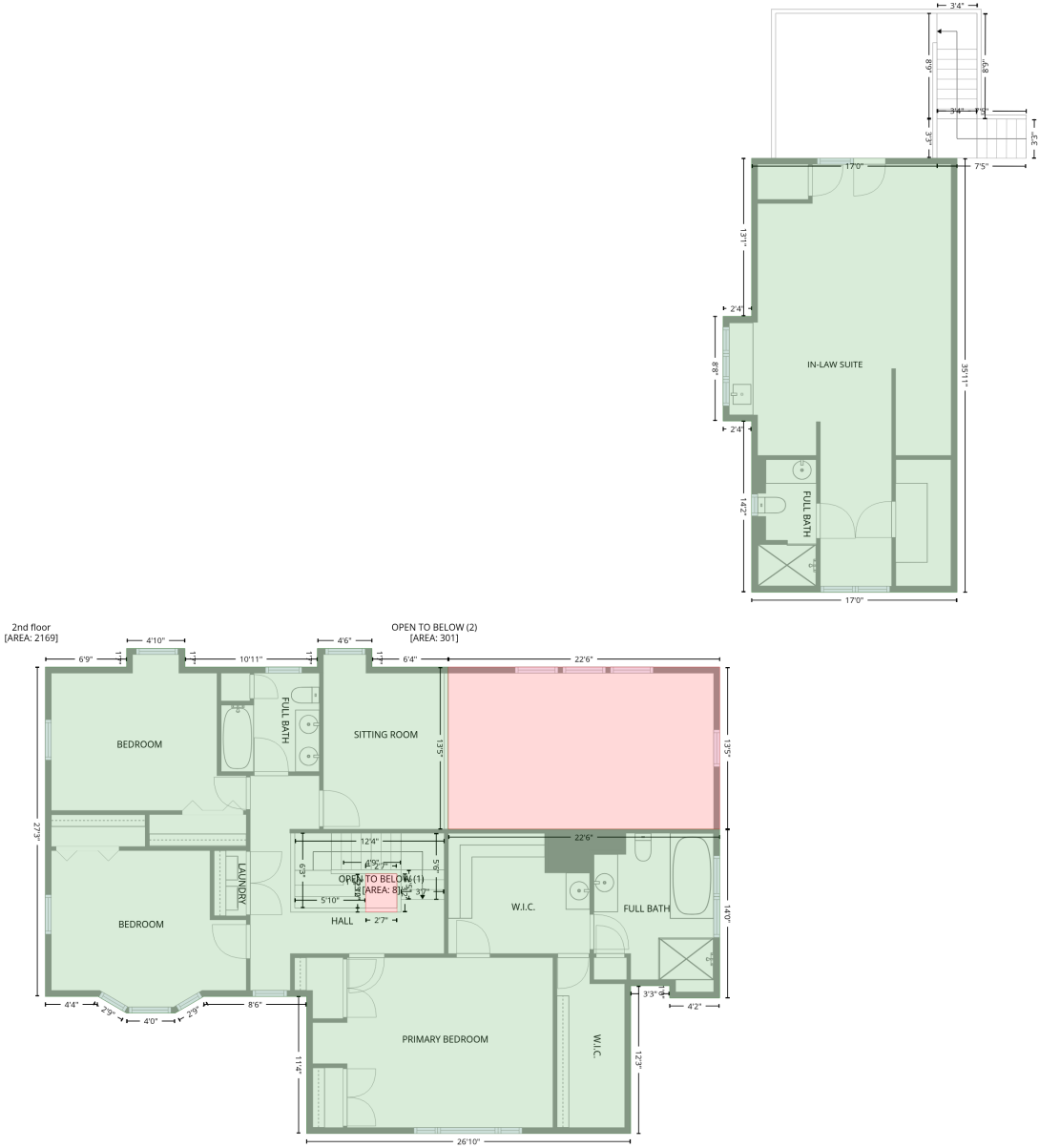
## Level 2

Space	Area (sq. ft)	Calculation <small>Coordinate Polygon Area Algorithm using inches</small>
1st floor (Living area)	2016	$-\left((953 + 959) * (500.8 - 500.8) + (959 + 959) * (500.8 - 538.1) + (959 + 920.7) * (538.1 - 596.5) + (920.7 + 855) * (596.5 - 634.4) + (855 + 830.1) * (634.4 - 634.4) + (830.1 + 830.1) * (634.4 - 921.5) + (830.1 + 761.2) * (921.5 - 921.5) + (761.2 + 761.2) * (921.5 - 1034.7) + (761.2 + 742.9) * (1034.7 - 1066.9) + (742.9 + 688.4) * (1066.9 - 1066.9) + (688.4 + 672.4) * (1066.9 - 1041.1) + (672.4 + 580) * (1041.1 - 1041.1) + (580 + 580) * (1041.1 - 921.5) + (580 + 160.7) * (921.5 - 921.5) + (160.7 + 160.7) * (921.5 - 565.2) + (160.7 + 166.7) * (565.2 - 559.2) + (166.7 + 338.4) * (559.2 - 559.2) + (338.4 + 344.4) * (559.2 - 557.2) + (344.4 + 383.9) * (557.2 - 557.2) + (383.9 + 383.9) * (557.2 - 528.7) + (383.9 + 410.1) * (528.7 - 506.7) + (410.1 + 508.4) * (506.7 - 506.7) + (508.4 + 535.2) * (506.7 - 529.1) + (535.2 + 535.2) * (529.1 - 559.2) + (535.2 + 804.8) * (559.2 - 559.2) + (804.8 + 804.8) * (559.2 - 465.2) + (804.8 + 845) * (465.2 - 465.2) + (845 + 845) * (465.2 - 494.8) + (845 + 953) * (494.8 - 494.8) + (953 + 953) * (494.8 - 500.8)) * 0.5 * 0.00694$
SCREENED PORCH (Non-living area)	253	$-\left((308 + 344.4) * (411.9 - 442.5) + (344.4 + 344.4) * (442.5 - 557.2) + (344.4 + 338.4) * (557.2 - 559.2) + (338.4 + 166.7) * (559.2 - 559.2) + (166.7 + 160.7) * (559.2 - 565.2) + (160.7 + 117.8) * (565.2 - 565.2) + (117.8 + 88.3) * (565.2 - 529.9) + (88.3 + 88.3) * (529.9 - 443.6) + (88.3 + 126) * (443.6 - 411.9) + (126 + 308) * (411.9 - 411.9)) * 0.5 * 0.00694$
GARAGE (Non-living area)	491	$-\left((1088.7 + 1088.7) * (244.6 - 500.8) + (1088.7 + 953) * (500.8 - 500.8) + (953 + 953) * (500.8 - 494.8) + (953 + 845) * (494.8 - 494.8) + (845 + 845) * (494.8 - 465.2) + (845 + 804.8) * (465.2 - 465.2) + (804.8 + 804.8) * (465.2 - 244.6) + (804.8 + 1088.7) * (244.6 - 244.6)) * 0.5 * 0.00694$
GARAGE (Non-living area)	340	$-\left((1088.7 + 1088.7) * (72.1 - 244.6) + (1088.7 + 804.8) * (244.6 - 244.6) + (804.8 + 804.8) * (244.6 - 72.1) + (804.8 + 1088.7) * (72.1 - 72.1)) * 0.5 * 0.00694$

# 15 River Meadow Drive, West Newbury, MA, US

Gross Living Area: 4185 sq. ft

## Level 3



# 15 River Meadow Drive, West Newbury, MA, US

Gross Living Area: 4185 sq. ft

## Level 3

Space	Area (sq. ft)	Calculation <small>Coordinate Polygon Area Algorithm using inches</small>
2nd floor (Living area)	2169	$-\left((299.4 + 299.4) * (559.2 - 577.7) + (299.4 + 430.8) * (577.7 - 577.7) + (430.8 + 430.8) * (577.7 - 559.2) + (430.8 + 485.1) * (559.2 - 559.2) + (485.1 + 485.1) * (559.2 - 577.7) + (485.1 + 560.7) * (577.7 - 577.7) + (560.7 + 560.7) * (577.7 - 738.7) + (560.7 + 830.3) * (738.7 - 738.7) + (830.3 + 830.3) * (738.7 - 906.4) + (830.3 + 780.5) * (906.4 - 906.4) + (780.5 + 780.5) * (906.4 - 894.3) + (780.5 + 741.9) * (894.3 - 894.3) + (741.9 + 741.9) * (894.3 - 1041.1) + (741.9 + 420.1) * (1041.1 - 1041.1) + (420.1 + 420.1) * (1041.1 - 904.9) + (420.1 + 318.1) * (904.9 - 904.9) + (318.1 + 289.7) * (904.9 - 921.5) + (289.7 + 241.5) * (921.5 - 921.5) + (241.5 + 213.1) * (921.5 - 904.9) + (213.1 + 160.7) * (904.9 - 904.9) + (160.7 + 160.7) * (904.9 - 577.7) + (160.7 + 241.4) * (577.7 - 577.7) + (241.4 + 241.4) * (577.7 - 559.2) + (241.4 + 299.4) * (559.2 - 559.2) * 0.5 * 0.00694 + -((509.8 + 478.7) * (783.1 - 783.2) + (478.7 + 478.7) * (783.2 - 821.2) + (478.7 + 509.8) * (821.2 - 821.2) + (509.8 + 509.8) * (821.2 - 783.1)) * 0.5 * 0.00694 + -((1066 + 1066) * (72.1 - 503.3) + (1066 + 861.9) * (503.3 - 503.3) + (861.9 + 861.9) * (503.3 - 333.3) + (861.9 + 833.6) * (333.3 - 333.3) + (833.6 + 833.6) * (333.3 - 229.2) + (833.6 + 861.9) * (229.2 - 229.2) + (861.9 + 861.9) * (229.2 - 72.1) + (861.9 + 1066) * (72.1 - 72.1)) * 0.5 * 0.00694$
OPEN TO BELOW (Non-living area)	8	$-\left((509.8 + 509.8) * (783.1 - 821.2) + (509.8 + 478.7) * (821.2 - 821.2) + (478.7 + 478.7) * (821.2 - 783.2) + (478.7 + 509.8) * (783.2 - 783.1)) * 0.5 * 0.00694$
OPEN TO BELOW (Non-living area)	301	$-\left((830.3 + 830.3) * (577.7 - 738.7) + (830.3 + 560.7) * (738.7 - 738.7) + (560.7 + 560.7) * (738.7 - 577.7) + (560.7 + 830.3) * (577.7 - 577.7)) * 0.5 * 0.00694$