

## Home data report

4714 Tobey Road, Jones, Salem, Roanoke County, Virginia,  
United States, 24153



**Total Area: 2154 sq. ft**

Basement: 0 sq. ft, 1st Floor: 1278 sq. ft, 2nd Floor: 876 sq. ft

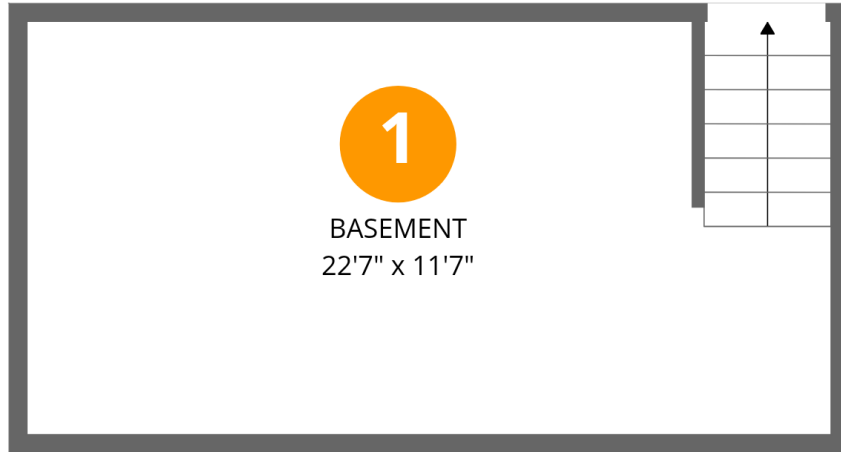
Excluded: Basement 263 sq. ft, Covered patio 341 sq. ft, Porch 67 sq. ft, Fireplace 8 sq. ft,  
Utility 35 sq. ft, Walls: 173 sq. ft

## Property summary



Home data report

4714 Tobey Road, Jones, Salem, Roanoke County, Virginia,  
United States, 24153



## Room dimensions

Floor 1 Below grade

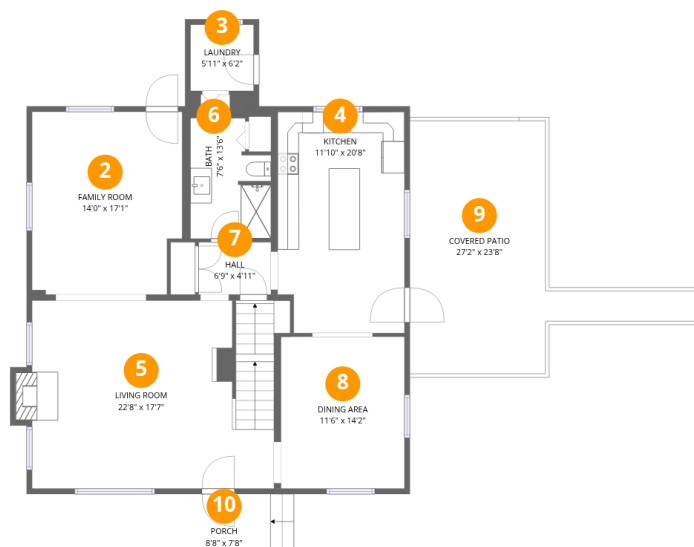
Total:0sqft

Excluded: 263sqft

| # |          | Dimensions    | sqft       | Counted as living area |
|---|----------|---------------|------------|------------------------|
| 1 | Basement | 22'7" x 11'7" | 261 sq. ft | No                     |

## Home data report

4714 Tobey Road, Jones, Salem, Roanoke County, Virginia,  
United States, 24153



## Room dimensions

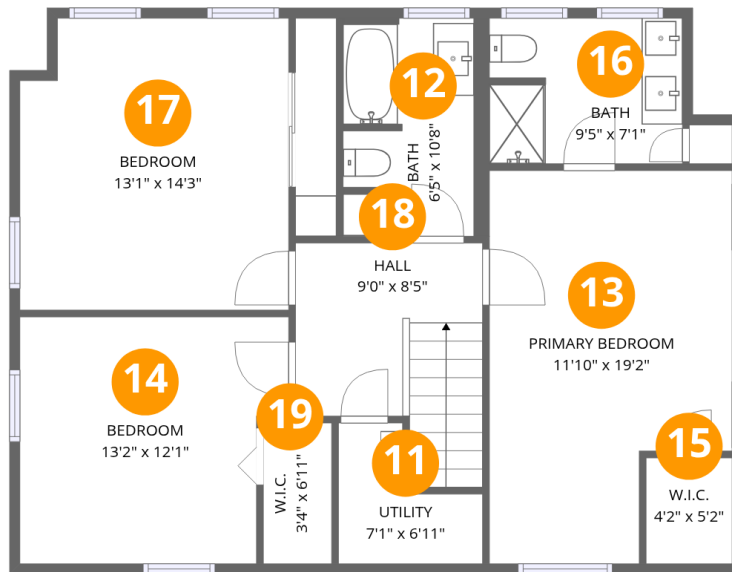
Floor 2

Total:1278sqft Excluded: 416sqft

| #  |               | Dimensions     | sqft       | Counted as living area |
|----|---------------|----------------|------------|------------------------|
| 2  | Family Room   | 14'0" x 17'1"  | 233 sq. ft | Yes                    |
| 3  | Laundry       | 5'11" x 6'2"   | 37 sq. ft  | Yes                    |
| 4  | Kitchen       | 11'10" x 20'8" | 240 sq. ft | Yes                    |
| 5  | Living Room   | 22'8" x 17'7"  | 402 sq. ft | Yes                    |
| 6  | Bath          | 7'6" x 13'6"   | 83 sq. ft  | Yes                    |
| 7  | Hall          | 6'9" x 4'11"   | 33 sq. ft  | Yes                    |
| 8  | Dining Area   | 11'6" x 14'2"  | 164 sq. ft | Yes                    |
| 9  | Covered Patio | 27'2" x 23'8"  | 341 sq. ft | No                     |
| 10 | Porch         | 8'8" x 7'8"    | 67 sq. ft  | No                     |

## Home data report

4714 Tobey Road, Jones, Salem, Roanoke County, Virginia,  
United States, 24153



## Room dimensions

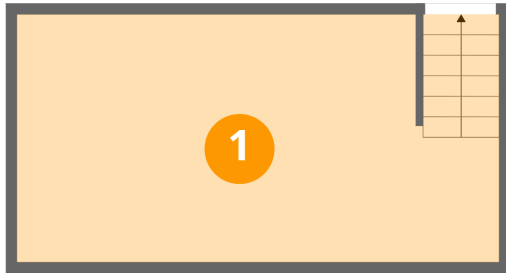
Floor 3

Total:876sqft Excluded: 35sqft

| #  |                 | Dimensions     | sqft       | Counted as living area |
|----|-----------------|----------------|------------|------------------------|
| 11 | Utility         | 7'1" x 6'11"   | 35 sq. ft  | No                     |
| 12 | Bath            | 6'5" x 10'8"   | 66 sq. ft  | Yes                    |
| 13 | Primary Bedroom | 11'10" x 19'2" | 203 sq. ft | Yes                    |
| 14 | Bedroom         | 13'2" x 12'1"  | 147 sq. ft | Yes                    |
| 15 | W.I.C.          | 4'2" x 5'2"    | 22 sq. ft  | Yes                    |
| 16 | Bath            | 9'5" x 7'1"    | 66 sq. ft  | Yes                    |
| 17 | Bedroom         | 13'1" x 14'3"  | 182 sq. ft | Yes                    |
| 18 | Hall            | 9'0" x 8'5"    | 90 sq. ft  | Yes                    |
| 19 | W.I.C.          | 3'4" x 6'11"   | 23 sq. ft  | Yes                    |

4714 Tobey Road, Jones, Salem, Roanoke County, Virginia,  
United States, 24153

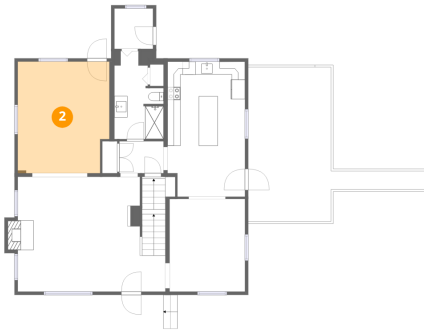
## 1 Floor 1 - Basement



Dimensions: 22'7" x 11'7"  
Area: 261 sq. ft  
Counted as living area: No

Heated: Yes  
Finished: No  
Enclosed: Yes  
Contiguous: Yes  
Permitted: Yes  
Wet space: No  
Addition: No  
Conversion: No

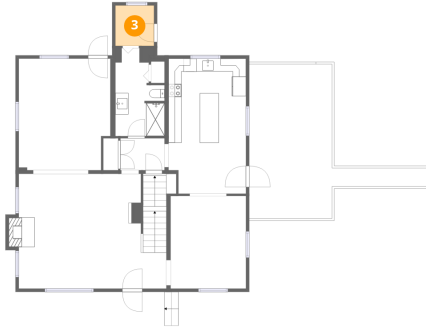
## 2 Floor 2 - Family Room



Dimensions: 14'0" x 17'1"  
Area: 233 sq. ft  
Counted as living area: Yes

Heated: Yes  
Finished: Yes  
Enclosed: Yes  
Contiguous: Yes  
Permitted: Yes  
Wet space: No  
Addition: No  
Conversion: No

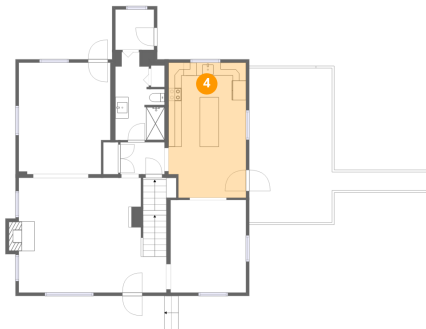
### 3 Floor 2 - Laundry



Dimensions: 5'11" x 6'2"  
Area: 37 sq. ft  
Counted as living area: Yes

Heated: Yes  
Finished: Yes  
Enclosed: Yes  
Contiguous: Yes  
Permitted: Yes  
Wet space: No  
Addition: No  
Conversion: No

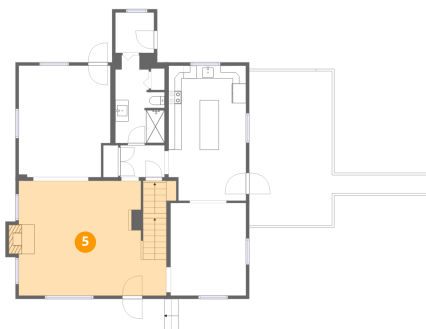
### 4 Floor 2 - Kitchen



Dimensions: 11'10" x 20'8"  
Area: 240 sq. ft  
Counted as living area: Yes

Heated: Yes  
Finished: Yes  
Enclosed: Yes  
Contiguous: Yes  
Permitted: Yes  
Wet space: No  
Addition: No  
Conversion: No

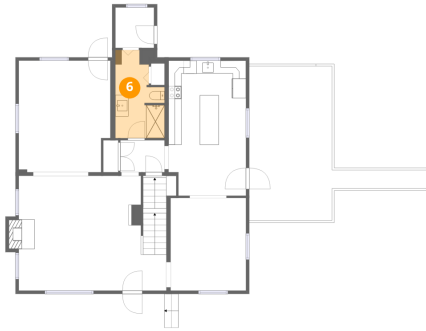
### 5 Floor 2 - Living Room



Dimensions: 22'8" x 17'7"  
Area: 402 sq. ft  
Counted as living area: Yes

Heated: Yes  
Finished: Yes  
Enclosed: Yes  
Contiguous: Yes  
Permitted: Yes  
Wet space: No  
Addition: No  
Conversion: No

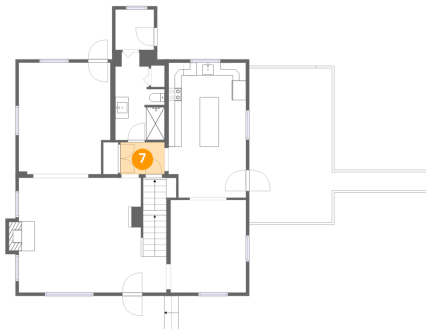
**6** Floor 2 - Bath



Dimensions: 7'6" x 13'6"  
Area: 83 sq. ft  
Counted as living area: Yes

Heated: Yes  
Finished: Yes  
Enclosed: Yes  
Contiguous: Yes  
Permitted: Yes  
Wet space: Yes  
Addition: No  
Conversion: No

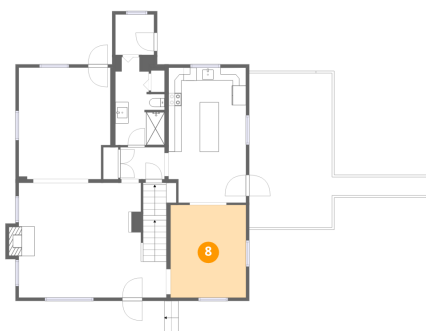
**7** Floor 2 - Hall



Dimensions: 6'9" x 4'11"  
Area: 33 sq. ft  
Counted as living area: Yes

Heated: Yes  
Finished: Yes  
Enclosed: Yes  
Contiguous: Yes  
Permitted: Yes  
Wet space: No  
Addition: No  
Conversion: No

**8** Floor 2 - Dining Area

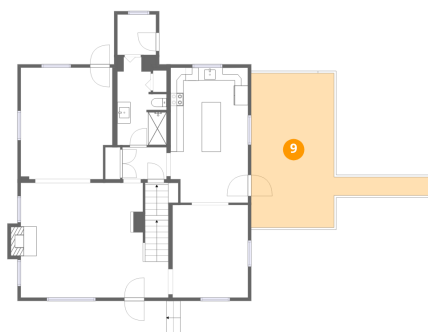


Dimensions: 11'6" x 14'2"  
Area: 164 sq. ft  
Counted as living area: Yes

Heated: Yes  
Finished: Yes  
Enclosed: Yes  
Contiguous: Yes  
Permitted: Yes  
Wet space: No  
Addition: No  
Conversion: No

4714 Tobey Road, Jones, Salem, Roanoke County, Virginia,  
United States, 24153

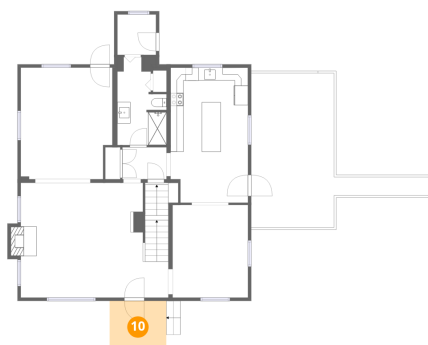
### 9 Floor 2 - Covered Patio



Dimensions: 27'2" x 23'8"  
Area: 341 sq. ft  
Counted as living area: No

Heated: No  
Finished: No  
Enclosed: No  
Contiguous: Yes  
Permitted: Yes  
Wet space: No  
Addition: No  
Conversion: No

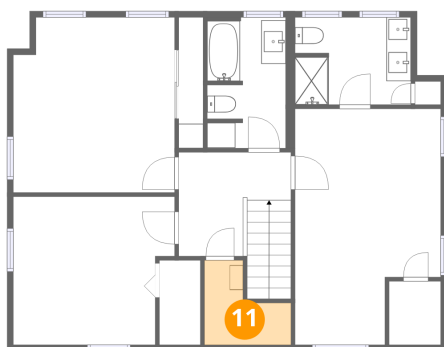
### 10 Floor 2 - Porch



Dimensions: 8'8" x 7'8"  
Area: 67 sq. ft  
Counted as living area: No

Heated: No  
Finished: No  
Enclosed: No  
Contiguous: Yes  
Permitted: Yes  
Wet space: No  
Addition: No  
Conversion: No

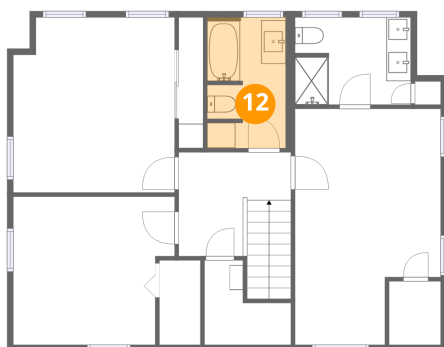
### 11 Floor 3 - Utility



Dimensions: 7'1" x 6'11"  
Area: 35 sq. ft  
Counted as living area: No

Heated: Yes  
Finished: No  
Enclosed: Yes  
Contiguous: Yes  
Permitted: Yes  
Wet space: No  
Addition: No  
Conversion: No

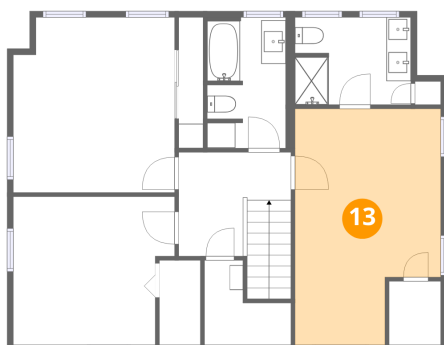
**12** Floor 3 - Bath



Dimensions: 6'5" x 10'8"  
Area: 66 sq. ft  
Counted as living area: Yes

Heated: Yes  
Finished: Yes  
Enclosed: Yes  
Contiguous: Yes  
Permitted: Yes  
Wet space: Yes  
Addition: No  
Conversion: No

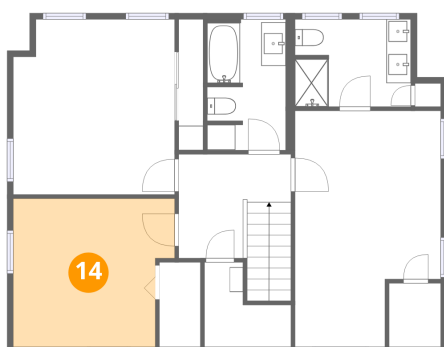
**13** Floor 3 - Primary Bedroom



Dimensions: 11'10" x 19'2"  
Area: 203 sq. ft  
Counted as living area: Yes

Heated: Yes  
Finished: Yes  
Enclosed: Yes  
Contiguous: Yes  
Permitted: Yes  
Wet space: No  
Addition: No  
Conversion: No

**14** Floor 3 - Bedroom



Dimensions: 13'2" x 12'1"  
Area: 147 sq. ft  
Counted as living area: Yes

Heated: Yes  
Finished: Yes  
Enclosed: Yes  
Contiguous: Yes  
Permitted: Yes  
Wet space: No  
Addition: No  
Conversion: No

4714 Tobey Road, Jones, Salem, Roanoke County, Virginia,  
United States, 24153

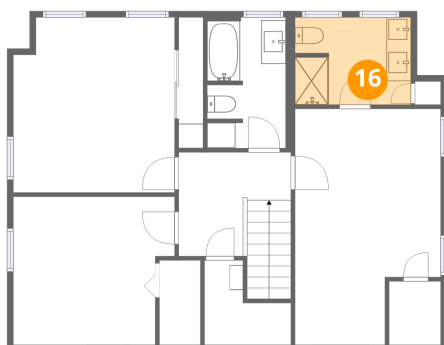
**15** Floor 3 - W.I.C.



Dimensions: 4'2" x 5'2"  
Area: 22 sq. ft  
Counted as living area: Yes

Heated: Yes  
Finished: Yes  
Enclosed: Yes  
Contiguous: Yes  
Permitted: Yes  
Wet space: No  
Addition: No  
Conversion: No

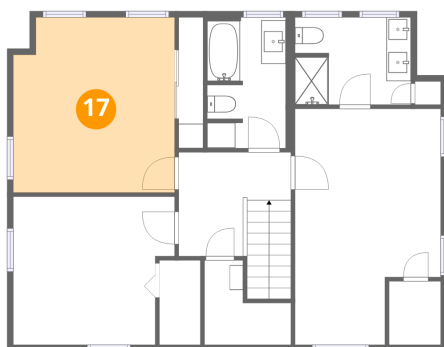
**16** Floor 3 - Bath



Dimensions: 9'5" x 7'1"  
Area: 66 sq. ft  
Counted as living area: Yes

Heated: Yes  
Finished: Yes  
Enclosed: Yes  
Contiguous: Yes  
Permitted: Yes  
Wet space: Yes  
Addition: No  
Conversion: No

**17** Floor 3 - Bedroom

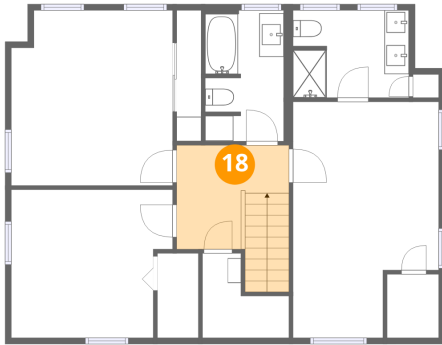


Dimensions: 13'1" x 14'3"  
Area: 182 sq. ft  
Counted as living area: Yes

Heated: Yes  
Finished: Yes  
Enclosed: Yes  
Contiguous: Yes  
Permitted: Yes  
Wet space: No  
Addition: No  
Conversion: No

4714 Tobey Road, Jones, Salem, Roanoke County, Virginia,  
United States, 24153

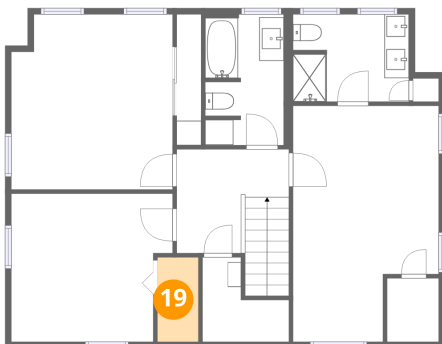
**18** Floor 3 - Hall



Dimensions: 9'0" x 8'5"  
Area: 90 sq. ft  
Counted as living area: Yes

Heated: Yes  
Finished: Yes  
Enclosed: Yes  
Contiguous: Yes  
Permitted: Yes  
Wet space: No  
Addition: No  
Conversion: No

**19** Floor 3 - W.I.C.



Dimensions: 3'4" x 6'11"  
Area: 23 sq. ft  
Counted as living area: Yes

Heated: Yes  
Finished: Yes  
Enclosed: Yes  
Contiguous: Yes  
Permitted: Yes  
Wet space: No  
Addition: No  
Conversion: No