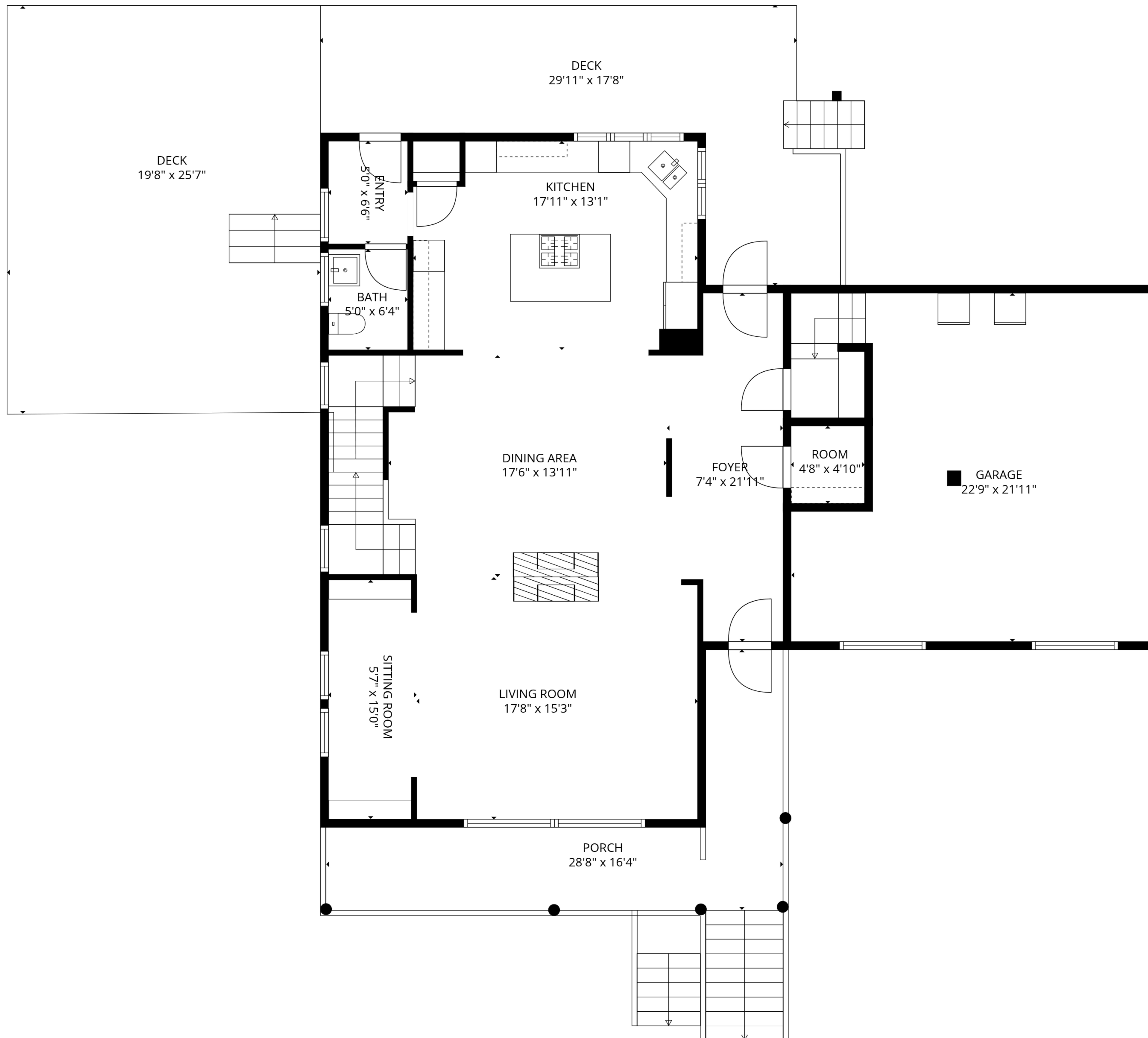


**TOTAL: 3449 sq. ft**

Basement: 936 sq. ft, 1st floor: 1131 sq. ft, 2nd floor: 1382 sq. ft  
 EXCLUDED AREAS: UTILITY: 31 sq. ft, STORAGE: 119 sq. ft, COVERED PATIO: 157 sq. ft,  
 GARAGE: 466 sq. ft, DECK: 834 sq. ft, PORCH: 244 sq. ft,  
 LOW CEILING: 43 sq. ft, WALLS: 285 sq. ft

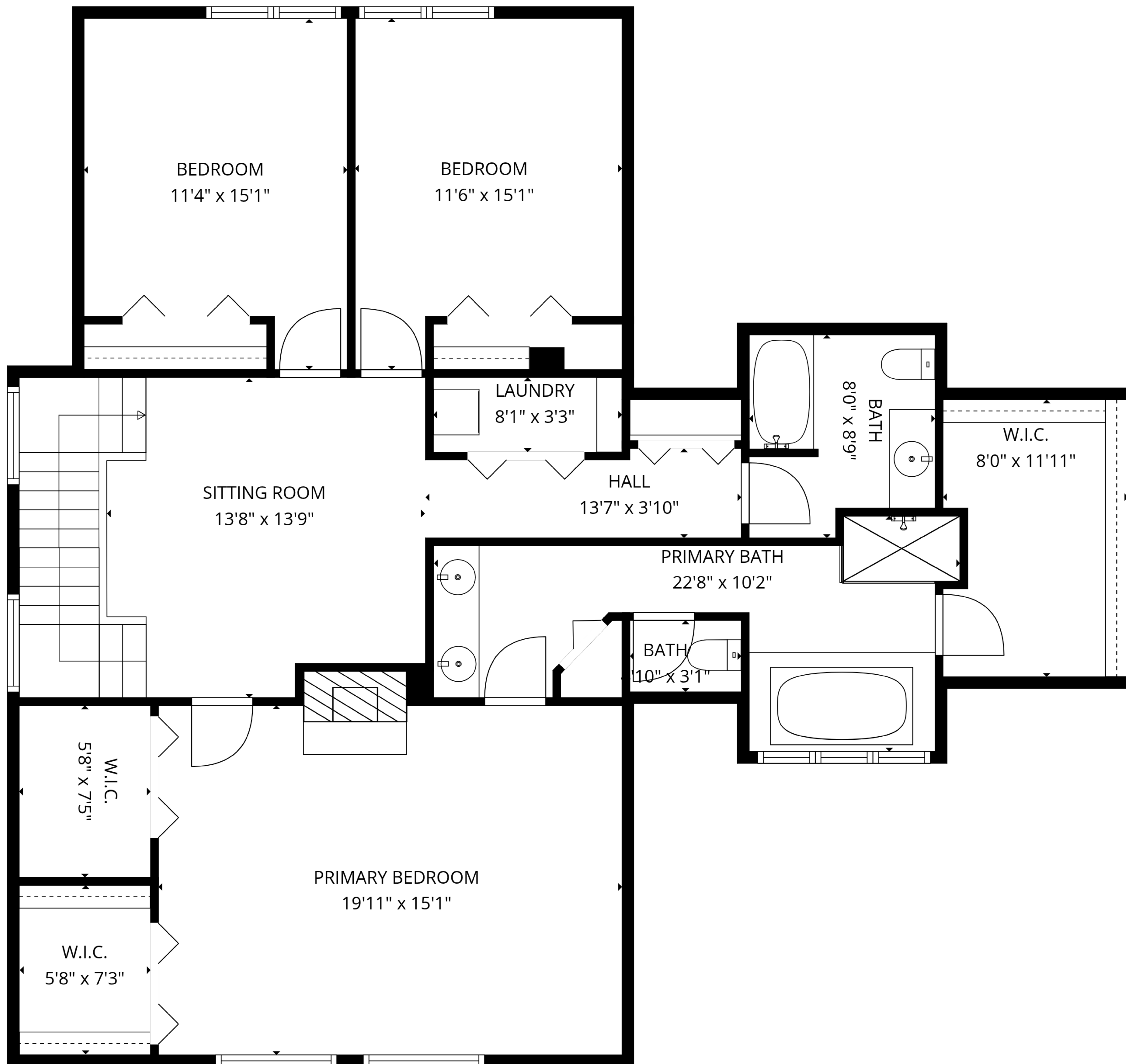
SIZES AND DIMENSIONS ARE APPROXIMATE, ACTUAL MAY VARY.



**TOTAL: 3449 sq. ft**

Basement: 936 sq. ft, 1st floor: 1131 sq. ft, 2nd floor: 1382 sq. ft  
 EXCLUDED AREAS: UTILITY: 31 sq. ft, STORAGE: 119 sq. ft, COVERED PATIO: 157 sq. ft,  
 GARAGE: 466 sq. ft, DECK: 834 sq. ft, PORCH: 244 sq. ft,  
 LOW CEILING: 43 sq. ft, WALLS: 285 sq. ft

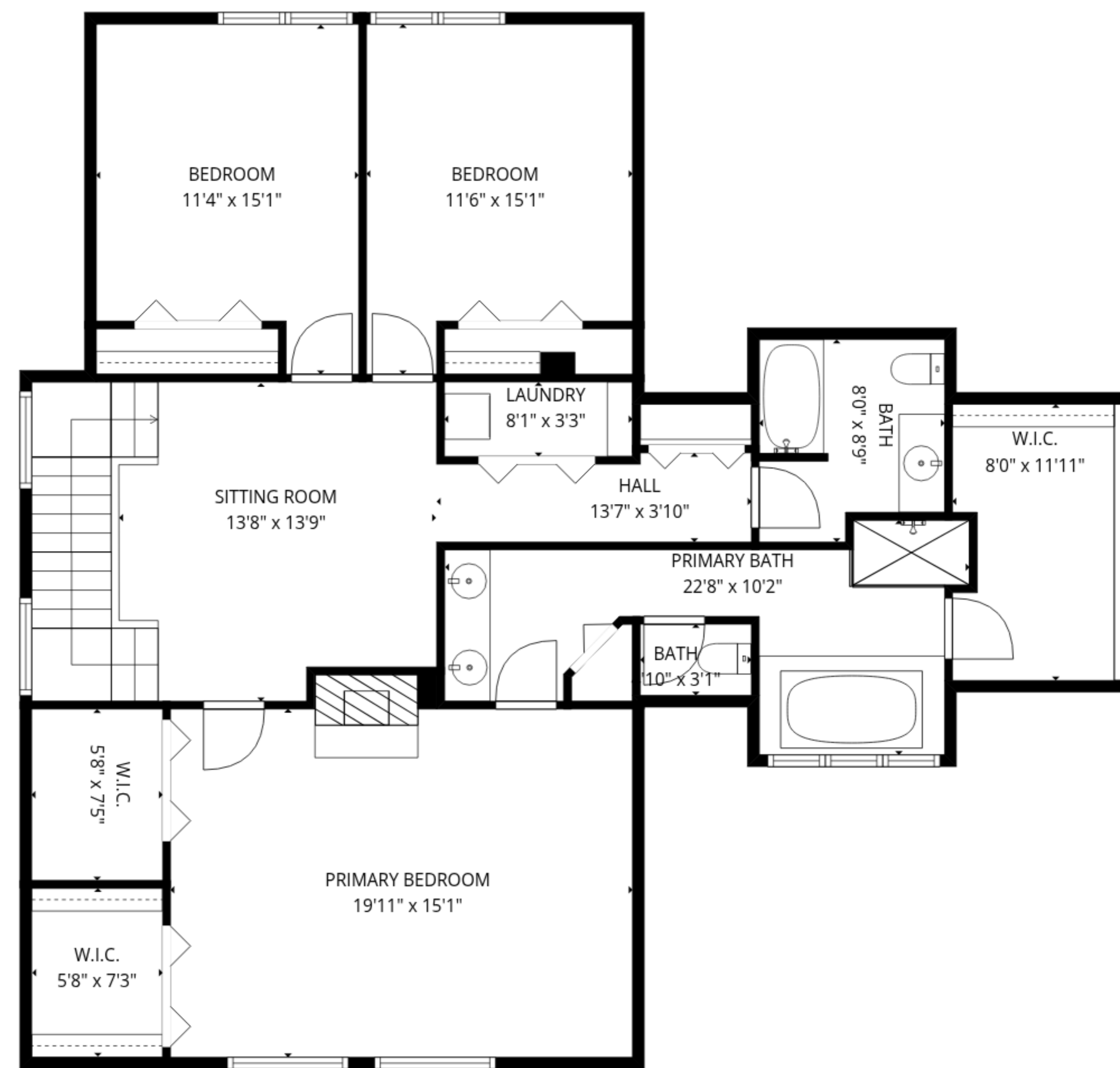
SIZES AND DIMENSIONS ARE APPROXIMATE, ACTUAL MAY VARY.



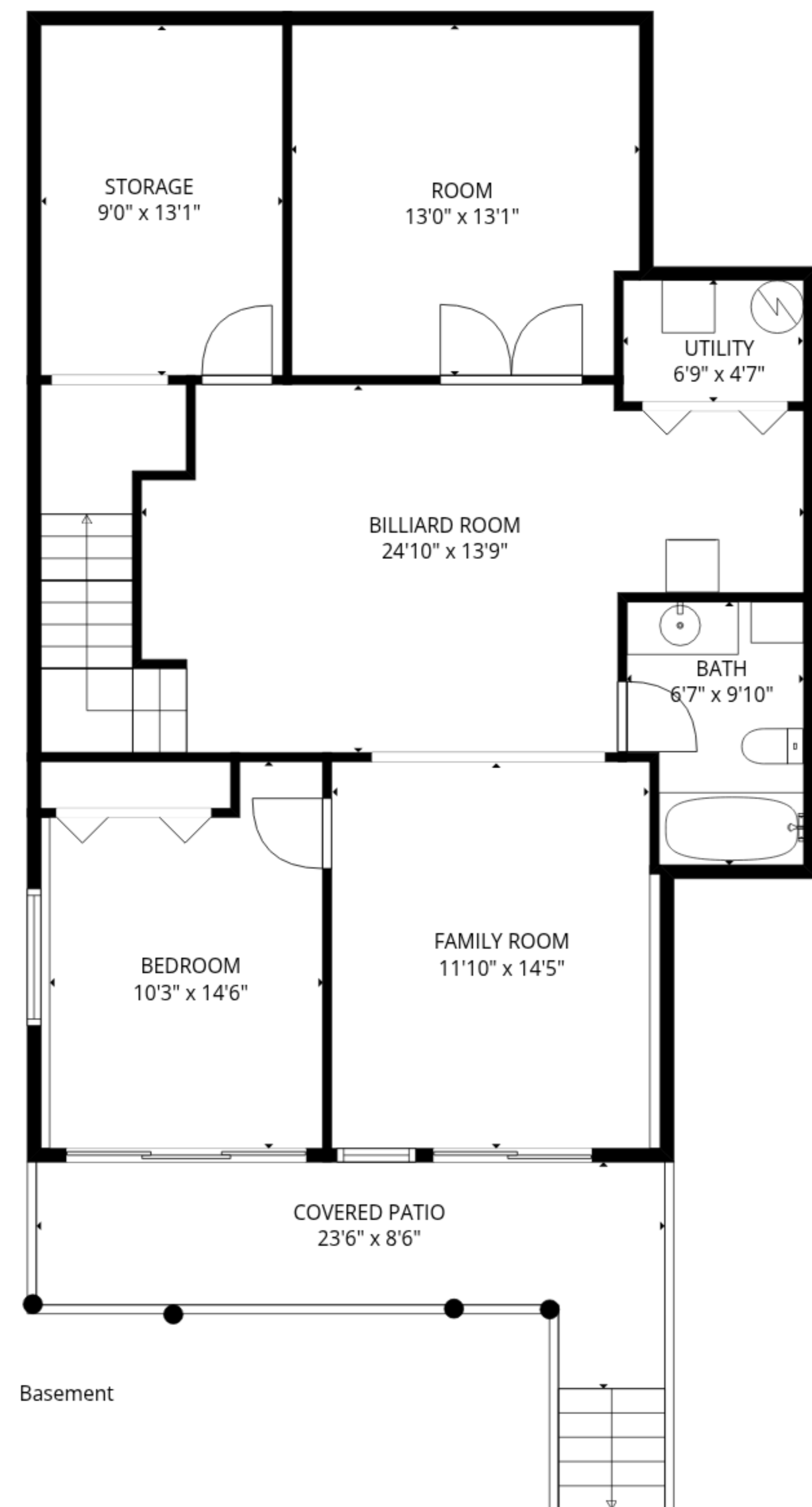
**TOTAL: 3449 sq. ft**

Basement: 936 sq. ft, 1st floor: 1131 sq. ft, 2nd floor: 1382 sq. ft  
 EXCLUDED AREAS: UTILITY: 31 sq. ft, STORAGE: 119 sq. ft, COVERED PATIO: 157 sq. ft,  
 GARAGE: 466 sq. ft, DECK: 834 sq. ft, PORCH: 244 sq. ft,  
 LOW CEILING: 43 sq. ft, WALLS: 285 sq. ft

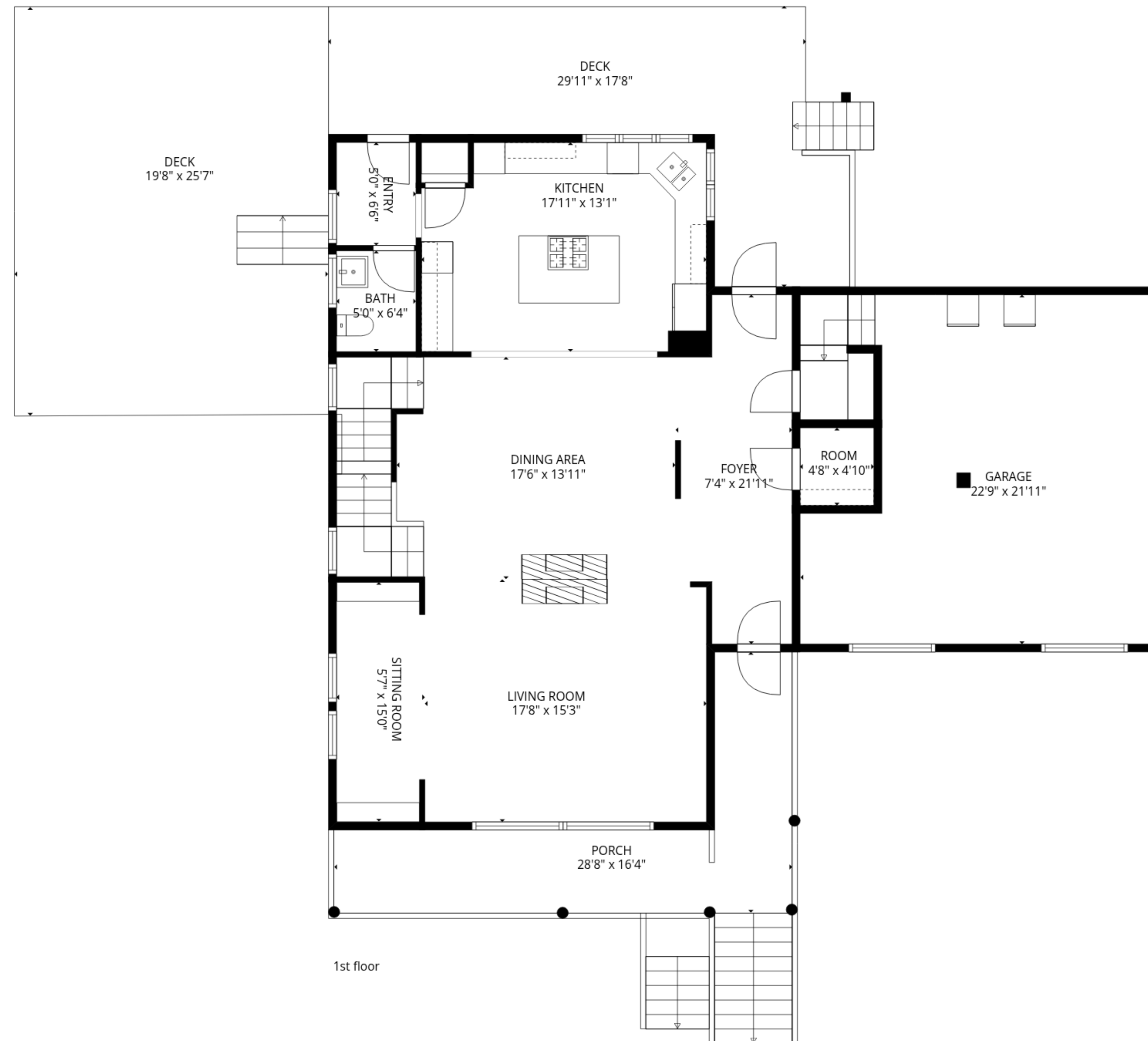
SIZES AND DIMENSIONS ARE APPROXIMATE, ACTUAL MAY VARY.



2nd floor



Basement



1st floor

**TOTAL: 3449 sq. ft**

Basement: 936 sq. ft, 1st floor: 1131 sq. ft, 2nd floor: 1382 sq. ft  
 EXCLUDED AREAS: UTILITY: 31 sq. ft, STORAGE: 119 sq. ft, COVERED PATIO: 157 sq. ft,  
 GARAGE: 466 sq. ft, DECK: 834 sq. ft, PORCH: 244 sq. ft,  
 LOW CEILING: 43 sq. ft, WALLS: 285 sq. ft

SIZES AND DIMENSIONS ARE APPROXIMATE, ACTUAL MAY VARY.