

Home data report

11680 South Lakes Dr, Reston, VA, US

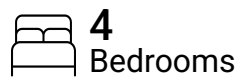


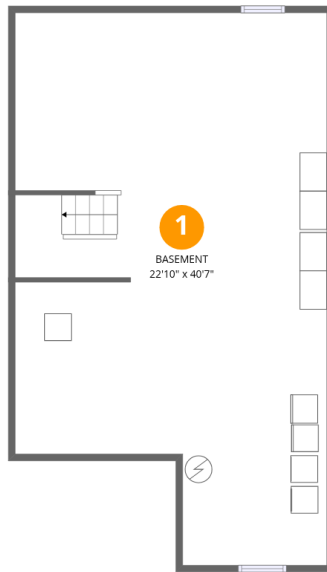
Total Area: 1676 sq. ft

Basement: 0 sq. ft, 1st Floor: 835 sq. ft, 2nd Floor: 841 sq. ft

Excluded: Basement 829 sq. ft, Porch 70 sq. ft, Deck 287 sq. ft, Fireplace 11 sq. ft, Walls: 146 sq. ft

Property summary





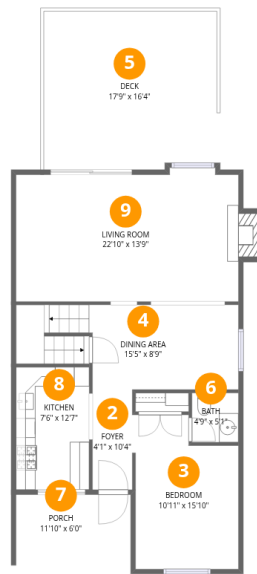
Room dimensions

Floor 1 Below grade

Total: 0sqft

Excluded: 829sqft

#		Dimensions	sqft	Counted as living area
1	Basement	22'10" x 40'7"	926 sq. ft	No



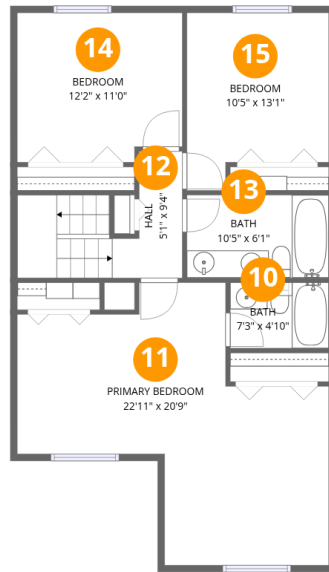
Room dimensions

Floor 2

Total: 835sqft

Excluded: 368sqft

#		Dimensions	sqft	Counted as living area
2	Foyer	4'1" x 10'4"	42 sq. ft	Yes
3	Bedroom	10'11" x 15'10"	173 sq. ft	Yes
4	Dining Area	15'5" x 8'9"	134 sq. ft	Yes
5	Deck	17'9" x 16'4"	289 sq. ft	No
6	Bath	4'9" x 5'1"	24 sq. ft	Yes
7	Porch	11'10" x 6'0"	70 sq. ft	No
8	Kitchen	7'6" x 12'7"	95 sq. ft	Yes
9	Living Room	22'10" x 13'9"	314 sq. ft	Yes



Room dimensions

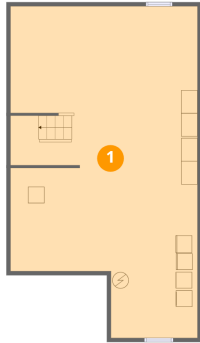
Floor 3

Total: 841 sqft

Excluded: 0 sqft

#		Dimensions	sqft	Counted as living area
10	Bath	7'3" x 4'10"	35 sq. ft	Yes
11	Primary Bedroom	22'11" x 20'9"	475 sq. ft	Yes
12	Hall	5'1" x 9'4"	48 sq. ft	Yes
13	Bath	10'5" x 6'1"	64 sq. ft	Yes
14	Bedroom	12'2" x 11'0"	133 sq. ft	Yes
15	Bedroom	10'5" x 13'1"	136 sq. ft	Yes

1 Floor 1 - Basement



Dimensions: 22'10" x 40'7"
Area: 926 sq. ft
Counted as living area: No

Heated: Yes
Finished: No
Enclosed: Yes
Contiguous: Yes
Permitted: Yes
Wet space: No
Addition: No
Conversion: No

2 Floor 2 - Foyer



Dimensions: 4'1" x 10'4"
Area: 42 sq. ft
Counted as living area: Yes

Heated: Yes
Finished: Yes
Enclosed: Yes
Contiguous: Yes
Permitted: Yes
Wet space: No
Addition: No
Conversion: No

3 Floor 2 - Bedroom



Dimensions: 10'11" x 15'10"
Area: 173 sq. ft
Counted as living area: Yes

Heated: Yes
Finished: Yes
Enclosed: Yes
Contiguous: Yes
Permitted: Yes
Wet space: No
Addition: No
Conversion: No

4 Floor 2 - Dining Area



Dimensions: 15'5" x 8'9"
Area: 134 sq. ft
Counted as living area: Yes

Heated: Yes
Finished: Yes
Enclosed: Yes
Contiguous: Yes
Permitted: Yes
Wet space: No
Addition: No
Conversion: No

5 Floor 2 - Deck



Dimensions: 17'9" x 16'4"
Area: 289 sq. ft
Counted as living area: No

Heated: No
Finished: No
Enclosed: No
Contiguous: Yes
Permitted: Yes
Wet space: No
Addition: No
Conversion: No

6 Floor 2 - Bath



Dimensions: 4'9" x 5'1"
Area: 24 sq. ft
Counted as living area: Yes

Heated: Yes
Finished: Yes
Enclosed: Yes
Contiguous: Yes
Permitted: Yes
Wet space: Yes
Addition: No
Conversion: No

7 Floor 2 - Porch



Dimensions: 11'10" x 6'0"
Area: 70 sq. ft
Counted as living area: No

Heated: No
Finished: No
Enclosed: No
Contiguous: Yes
Permitted: Yes
Wet space: No
Addition: No
Conversion: No

8 Floor 2 - Kitchen



Dimensions: 7'6" x 12'7"
Area: 95 sq. ft
Counted as living area: Yes

Heated: Yes
Finished: Yes
Enclosed: Yes
Contiguous: Yes
Permitted: Yes
Wet space: No
Addition: No
Conversion: No

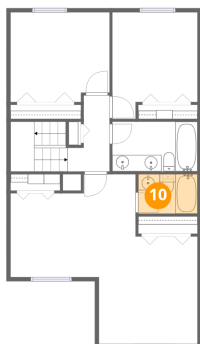
9 Floor 2 - Living Room



Dimensions: 22'10" x 13'9"
Area: 314 sq. ft
Counted as living area: Yes

Heated: Yes
Finished: Yes
Enclosed: Yes
Contiguous: Yes
Permitted: Yes
Wet space: No
Addition: No
Conversion: No

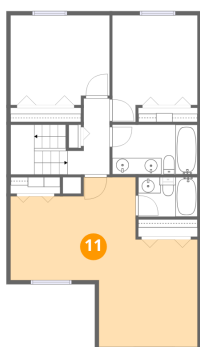
10 Floor 3 - Bath



Dimensions: 7'3" x 4'10"
Area: 35 sq. ft
Counted as living area: Yes

Heated: Yes
Finished: Yes
Enclosed: Yes
Contiguous: Yes
Permitted: Yes
Wet space: Yes
Addition: No
Conversion: No

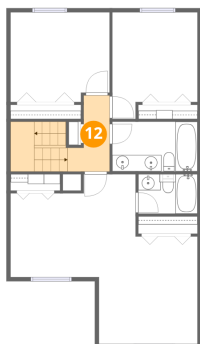
11 Floor 3 - Primary Bedroom



Dimensions: 22'11" x 20'9"
Area: 475 sq. ft
Counted as living area: Yes

Heated: Yes
Finished: Yes
Enclosed: Yes
Contiguous: Yes
Permitted: Yes
Wet space: No
Addition: No
Conversion: No

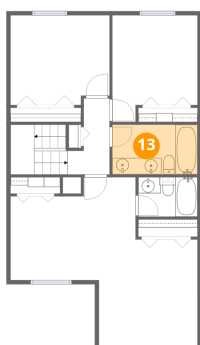
12 Floor 3 - Hall



Dimensions: 5'1" x 9'4"
Area: 48 sq. ft
Counted as living area: Yes

Heated: Yes
Finished: Yes
Enclosed: Yes
Contiguous: Yes
Permitted: Yes
Wet space: No
Addition: No
Conversion: No

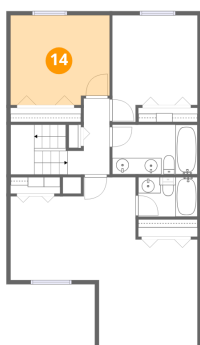
13 Floor 3 - Bath



Dimensions: 10'5" x 6'1"
Area: 64 sq. ft
Counted as living area: Yes

Heated: Yes
Finished: Yes
Enclosed: Yes
Contiguous: Yes
Permitted: Yes
Wet space: Yes
Addition: No
Conversion: No

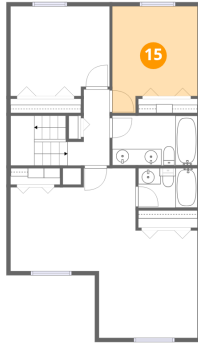
14 Floor 3 - Bedroom



Dimensions: 12'2" x 11'0"
Area: 133 sq. ft
Counted as living area: Yes

Heated: Yes
Finished: Yes
Enclosed: Yes
Contiguous: Yes
Permitted: Yes
Wet space: No
Addition: No
Conversion: No

15 Floor 3 - Bedroom



Dimensions: 10'5" x 13'1"

Area: 136 sq. ft

Counted as living area: Yes

Heated: Yes

Finished: Yes

Enclosed: Yes

Contiguous: Yes

Permitted: Yes

Wet space: No

Addition: No

Conversion: No