

6324 Pumpnickel Ln, Monroe, NC, US



Total Area: 4433 sq. ft

1st Floor: 886 sq. ft, 2nd Floor: 1974 sq. ft, 3rd Floor: 1573 sq. ft

Excluded: Garage 832 sq. ft, Utility 117 sq. ft, Low ceiling 15 sq. ft, Shop 647 sq. ft, Screened porch 246 sq. ft, Fireplace 11 sq. ft, Open to below 200 sq. ft

Property summary



Home data report

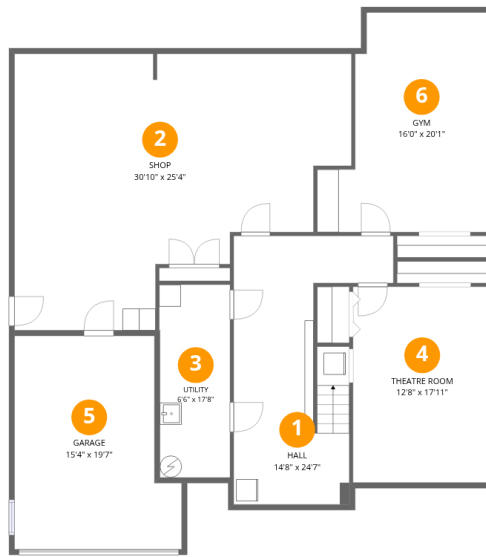
6324 Pumpernickel Ln, Monroe, NC, US

 **1**
Half baths

 **2**
Garages

Scan captured on Thu, 11 Jun 2026 15:10:36 GMT

*Measurements are performed in accordance with ANSI Z765 standards where applicable. Measurements are provided for marketing purposes only and should not be relied upon for legal, lending, or appraisal use. All measurements are deemed reliable but not guaranteed.



Room dimensions

Floor 1

Total:886sqft

Excluded: 1080sqft

#		Dimensions	sqft	Counted as living area
1	Hall	14'8" x 24'7"	256 sq. ft	Yes
2	Shop	30'10" x 25'4"	618 sq. ft	No
3	Utility	6'6" x 17'8"	114 sq. ft	No
4	Theatre Room	12'8" x 17'11"	228 sq. ft	Yes
5	Garage	15'4" x 19'7"	266 sq. ft	No
6	Gym	16'0" x 20'1"	267 sq. ft	Yes

6324 Pumpernickel Ln, Monroe, NC, US



Room dimensions

Floor 2

Total: 1974 sqft

Excluded: 788 sqft

#		Dimensions	sqft	Counted as living area
7	Breakfast Nook	14'6" x 8'5"	119 sq. ft	Yes
8	Screened Porch	18'8" x 12'2"	227 sq. ft	No
9	Dining Room	12'9" x 12'4"	156 sq. ft	Yes
10	W.I.C.	10'5" x 10'3"	89 sq. ft	Yes
11	Family Room	12'8" x 9'10"	134 sq. ft	Yes
12	Bath	4'4" x 5'7"	23 sq. ft	Yes
13	Garage	22'2" x 22'4"	495 sq. ft	No
14	Laundry	6'2" x 11'0"	68 sq. ft	Yes
15	Primary Bedroom	12'8" x 18'0"	229 sq. ft	Yes
16	W.I.C.	4'10" x 7'0"	31 sq. ft	Yes
17	Hall	6'2" x 11'0"	62 sq. ft	Yes

Scan captured on Thu, 11 Jun 2026 15:10:36 GMT

*Measurements are performed in accordance with ANSI Z765 standards where applicable. Measurements are provided for marketing purposes only and should not be relied upon for legal, lending, or appraisal use. All measurements are deemed reliable but not guaranteed.

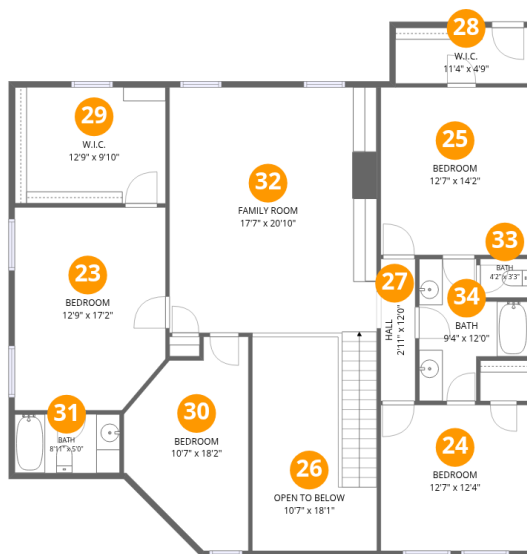
Home data report

6324 Pumpnickel Ln, Monroe, NC, US

#		Dimensions	sqft	Counted as living area
18	Bath	6'8" x 7'1"	39 sq. ft	Yes
19	Primary Bath	15'3" x 16'10"	147 sq. ft	Yes
20	Foyer	10'8" x 20'5"	214 sq. ft	Yes
21	Living Room	17'7" x 21'3"	368 sq. ft	Yes
22	Kitchen	12'6" x 11'9"	147 sq. ft	Yes

Scan captured on Thu, 11 Jun 2026 15:10:36 GMT

*Measurements are performed in accordance with ANSI Z765 standards where applicable. Measurements are provided for marketing purposes only and should not be relied upon for legal, lending, or appraisal use. All measurements are deemed reliable but not guaranteed.



Room dimensions

Floor 3

Total:1573sqft

Excluded: 200sqft

#		Dimensions	sqft	Counted as living area
23	Bedroom	12'9" x 17'2"	212 sq. ft	Yes
24	Bedroom	12'7" x 12'4"	156 sq. ft	Yes
25	Bedroom	12'7" x 14'2"	179 sq. ft	Yes
26	Open To Below	10'7" x 18'1"	195 sq. ft	No
27	Hall	2'11" x 12'0"	35 sq. ft	Yes
28	W.I.C.	11'4" x 4'9"	54 sq. ft	Yes
29	W.I.C.	12'9" x 9'10"	126 sq. ft	Yes
30	Bedroom	10'7" x 18'2"	146 sq. ft	Yes
31	Bath	8'11" x 5'0"	44 sq. ft	Yes
32	Family Room	17'7" x 20'10"	366 sq. ft	Yes
33	Bath	4'2" x 3'3"	14 sq. ft	Yes

Scan captured on Thu, 11 Jun 2026 15:10:36 GMT

*Measurements are performed in accordance with ANSI Z765 standards where applicable. Measurements are provided for marketing purposes only and should not be relied upon for legal, lending, or appraisal use. All measurements are deemed reliable but not guaranteed.

Home data report

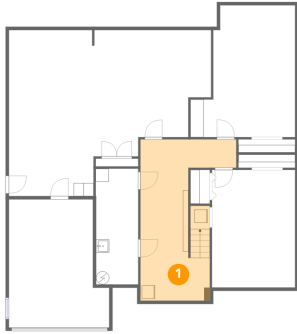
6324 Pumpnickel Ln, Monroe, NC, US

#		Dimensions	sqft	Counted as living area
34	Bath	9'4" x 12'0"	79 sq. ft	Yes

Scan captured on Thu, 11 Jun 2026 15:10:36 GMT

*Measurements are performed in accordance with ANSI Z765 standards where applicable. Measurements are provided for marketing purposes only and should not be relied upon for legal, lending, or appraisal use. All measurements are deemed reliable but not guaranteed.

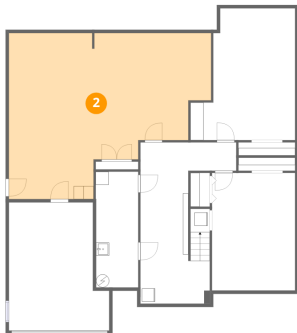
1 Floor 1 - Hall



Dimensions: 14'8" x 24'7"
Area: 256 sq. ft
Counted as living area: Yes

Heated: Yes
Finished: Yes
Enclosed: Yes
Contiguous: Yes
Permitted: Yes
Wet space: No
Addition: No
Conversion: No

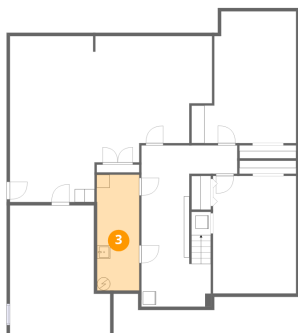
2 Floor 1 - Shop



Dimensions: 30'10" x 25'4"
Area: 618 sq. ft
Counted as living area: No

Heated: Yes
Finished: No
Enclosed: Yes
Contiguous: Yes
Permitted: Yes
Wet space: No
Addition: No
Conversion: No

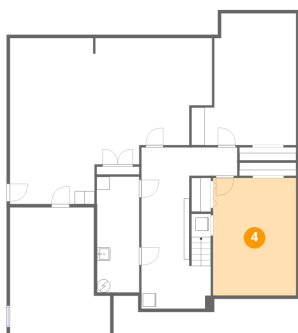
3 Floor 1 - Utility



Dimensions: 6'6" x 17'8"
Area: 114 sq. ft
Counted as living area: No

Heated: Yes
Finished: No
Enclosed: Yes
Contiguous: Yes
Permitted: Yes
Wet space: No
Addition: No
Conversion: No

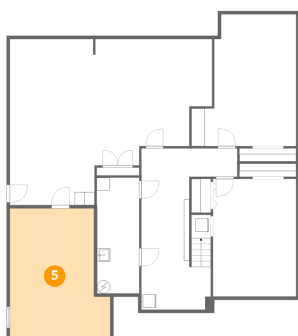
4 Floor 1 - Theatre Room



Dimensions: 12'8" x 17'11"
Area: 228 sq. ft
Counted as living area: Yes

Heated: Yes
Finished: Yes
Enclosed: Yes
Contiguous: Yes
Permitted: Yes
Wet space: No
Addition: No
Conversion: No

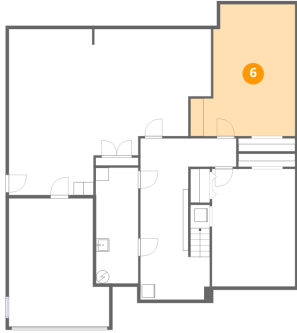
5 Floor 1 - Garage



Dimensions: 15'4" x 19'7"
Area: 266 sq. ft
Counted as living area: No

Heated: No
Finished: No
Enclosed: Yes
Contiguous: Yes
Permitted: Yes
Wet space: No
Addition: No
Conversion: No

6 Floor 1 - Gym



Dimensions: 16'0" x 20'1"
Area: 267 sq. ft
Counted as living area: Yes

Heated: Yes
Finished: Yes
Enclosed: Yes
Contiguous: Yes
Permitted: Yes
Wet space: No
Addition: No
Conversion: No

7 Floor 2 - Breakfast Nook



Dimensions: 14'6" x 8'5"
Area: 119 sq. ft
Counted as living area: Yes

Heated: Yes
Finished: Yes
Enclosed: Yes
Contiguous: Yes
Permitted: Yes
Wet space: No
Addition: No
Conversion: No

8 Floor 2 - Screened Porch



Dimensions: 18'8" x 12'2"
Area: 227 sq. ft
Counted as living area: No

Heated: No
Finished: Yes
Enclosed: No
Contiguous: Yes
Permitted: Yes
Wet space: No
Addition: No
Conversion: No

9 Floor 2 - Dining Room



Dimensions: 12'9" x 12'4"
Area: 156 sq. ft
Counted as living area: Yes

Heated: Yes
Finished: Yes
Enclosed: Yes
Contiguous: Yes
Permitted: Yes
Wet space: No
Addition: No
Conversion: No

10 Floor 2 - W.I.C.



Dimensions: 10'5" x 10'3"
Area: 89 sq. ft
Counted as living area: Yes

Heated: Yes
Finished: Yes
Enclosed: Yes
Contiguous: Yes
Permitted: Yes
Wet space: No
Addition: No
Conversion: No

11 Floor 2 - Family Room



Dimensions: 12'8" x 9'10"
Area: 134 sq. ft
Counted as living area: Yes

Heated: Yes
Finished: Yes
Enclosed: Yes
Contiguous: Yes
Permitted: Yes
Wet space: No
Addition: No
Conversion: No

12 Floor 2 - Bath



Dimensions: 4'4" x 5'7"
Area: 23 sq. ft
Counted as living area: Yes

Heated: Yes
Finished: Yes
Enclosed: Yes
Contiguous: Yes
Permitted: Yes
Wet space: Yes
Addition: No
Conversion: No

13 Floor 2 - Garage



Dimensions: 22'2" x 22'4"
Area: 495 sq. ft
Counted as living area: No

Heated: No
Finished: No
Enclosed: Yes
Contiguous: Yes
Permitted: Yes
Wet space: No
Addition: No
Conversion: No

14 Floor 2 - Laundry



Dimensions: 6'2" x 11'0"
Area: 68 sq. ft
Counted as living area: Yes

Heated: Yes
Finished: Yes
Enclosed: Yes
Contiguous: Yes
Permitted: Yes
Wet space: No
Addition: No
Conversion: No

15 Floor 2 - Primary Bedroom



Dimensions: 12'8" x 18'0"
Area: 229 sq. ft
Counted as living area: Yes

Heated: Yes
Finished: Yes
Enclosed: Yes
Contiguous: Yes
Permitted: Yes
Wet space: No
Addition: No
Conversion: No

16 Floor 2 - W.I.C.



Dimensions: 4'10" x 7'0"
Area: 31 sq. ft
Counted as living area: Yes

Heated: Yes
Finished: Yes
Enclosed: Yes
Contiguous: Yes
Permitted: Yes
Wet space: No
Addition: No
Conversion: No

17 Floor 2 - Hall



Dimensions: 6'2" x 11'0"
Area: 62 sq. ft
Counted as living area: Yes

Heated: Yes
Finished: Yes
Enclosed: Yes
Contiguous: Yes
Permitted: Yes
Wet space: No
Addition: No
Conversion: No

18 Floor 2 - Bath



Dimensions: 6'8" x 7'1"
Area: 39 sq. ft
Counted as living area: Yes

Heated: Yes
Finished: Yes
Enclosed: Yes
Contiguous: Yes
Permitted: Yes
Wet space: Yes
Addition: No
Conversion: No

19 Floor 2 - Primary Bath



Dimensions: 15'3" x 16'10"
Area: 147 sq. ft
Counted as living area: Yes

Heated: Yes
Finished: Yes
Enclosed: Yes
Contiguous: Yes
Permitted: Yes
Wet space: Yes
Addition: No
Conversion: No

20 Floor 2 - Foyer



Dimensions: 10'8" x 20'5"
Area: 214 sq. ft
Counted as living area: Yes

Heated: Yes
Finished: Yes
Enclosed: Yes
Contiguous: Yes
Permitted: Yes
Wet space: No
Addition: No
Conversion: No

21 Floor 2 - Living Room



Dimensions: 17'7" x 21'3"
Area: 368 sq. ft
Counted as living area: Yes

Heated: Yes
Finished: Yes
Enclosed: Yes
Contiguous: Yes
Permitted: Yes
Wet space: No
Addition: No
Conversion: No

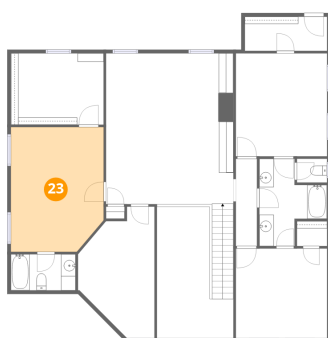
22 Floor 2 - Kitchen



Dimensions: 12'6" x 11'9"
Area: 147 sq. ft
Counted as living area: Yes

Heated: Yes
Finished: Yes
Enclosed: Yes
Contiguous: Yes
Permitted: Yes
Wet space: No
Addition: No
Conversion: No

23 Floor 3 - Bedroom



Dimensions: 12'9" x 17'2"
Area: 212 sq. ft
Counted as living area: Yes

Heated: Yes
Finished: Yes
Enclosed: Yes
Contiguous: Yes
Permitted: Yes
Wet space: No
Addition: No
Conversion: No

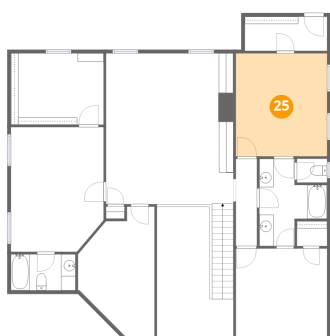
24 Floor 3 - Bedroom



Dimensions: 12'7" x 12'4"
Area: 156 sq. ft
Counted as living area: Yes

Heated: Yes
Finished: Yes
Enclosed: Yes
Contiguous: Yes
Permitted: Yes
Wet space: No
Addition: No
Conversion: No

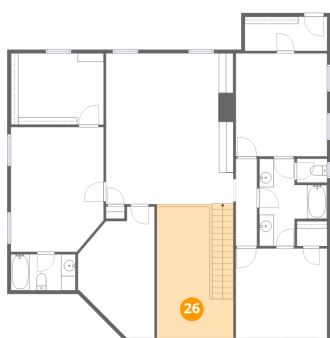
25 Floor 3 - Bedroom



Dimensions: 12'7" x 14'2"
Area: 179 sq. ft
Counted as living area: Yes

Heated: Yes
Finished: Yes
Enclosed: Yes
Contiguous: Yes
Permitted: Yes
Wet space: No
Addition: No
Conversion: No

26 Floor 3 - Open To Below



Dimensions: 10'7" x 18'1"
Area: 195 sq. ft
Counted as living area: No

Heated: No
Finished: No
Enclosed: No
Contiguous: Yes
Permitted: No
Wet space: No
Addition: No
Conversion: No

27 Floor 3 - Hall



Dimensions: 2'11" x 12'0"
Area: 35 sq. ft
Counted as living area: Yes

Heated: Yes
Finished: Yes
Enclosed: Yes
Contiguous: Yes
Permitted: Yes
Wet space: No
Addition: No
Conversion: No

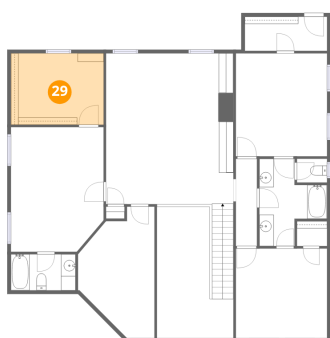
28 Floor 3 - W.I.C.



Dimensions: 11'4" x 4'9"
Area: 54 sq. ft
Counted as living area: Yes

Heated: Yes
Finished: Yes
Enclosed: Yes
Contiguous: Yes
Permitted: Yes
Wet space: No
Addition: No
Conversion: No

29 Floor 3 - W.I.C.



Dimensions: 12'9" x 9'10"
Area: 126 sq. ft
Counted as living area: Yes

Heated: Yes
Finished: Yes
Enclosed: Yes
Contiguous: Yes
Permitted: Yes
Wet space: No
Addition: No
Conversion: No

30 Floor 3 - Bedroom



Dimensions: 10'7" x 18'2"
Area: 146 sq. ft
Counted as living area: Yes

Heated: Yes
Finished: Yes
Enclosed: Yes
Contiguous: Yes
Permitted: Yes
Wet space: No
Addition: No
Conversion: No

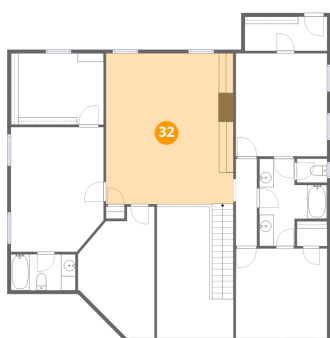
31 Floor 3 - Bath



Dimensions: 8'11" x 5'0"
Area: 44 sq. ft
Counted as living area: Yes

Heated: Yes
Finished: Yes
Enclosed: Yes
Contiguous: Yes
Permitted: Yes
Wet space: Yes
Addition: No
Conversion: No

32 Floor 3 - Family Room



Dimensions: 17'7" x 20'10"
Area: 366 sq. ft
Counted as living area: Yes

Heated: Yes
Finished: Yes
Enclosed: Yes
Contiguous: Yes
Permitted: Yes
Wet space: No
Addition: No
Conversion: No

33 Floor 3 - Bath



Dimensions: 4'2" x 3'3"
Area: 14 sq. ft
Counted as living area: Yes

Heated: Yes
Finished: Yes
Enclosed: Yes
Contiguous: Yes
Permitted: Yes
Wet space: Yes
Addition: No
Conversion: No

34 Floor 3 - Bath



Dimensions: 9'4" x 12'0"
Area: 79 sq. ft
Counted as living area: Yes

Heated: Yes
Finished: Yes
Enclosed: Yes
Contiguous: Yes
Permitted: Yes
Wet space: Yes
Addition: No
Conversion: No