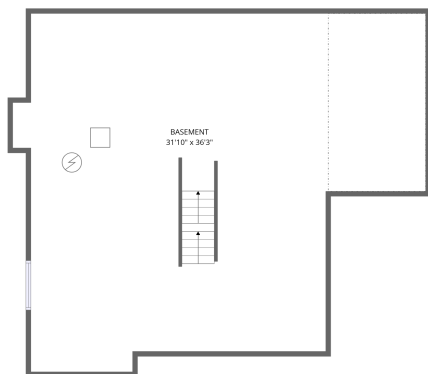
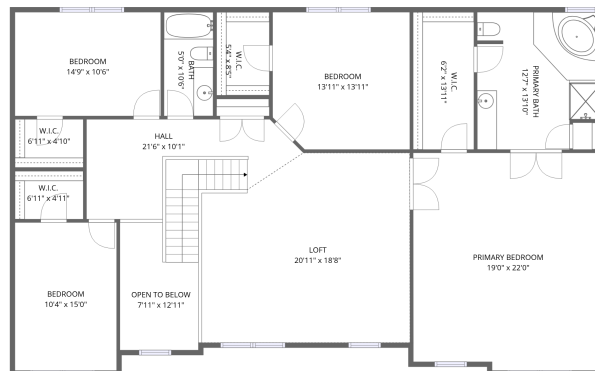
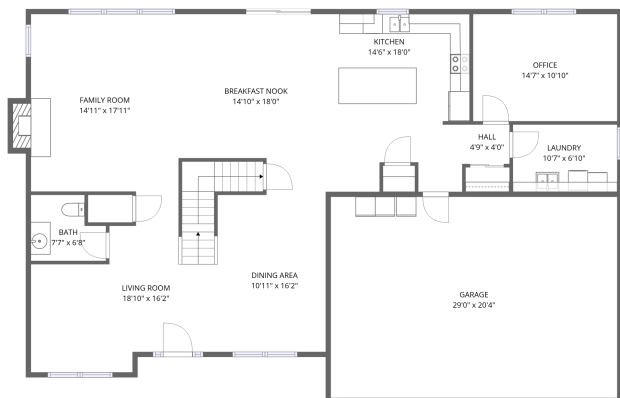


Home data report

257 Hanburg Lane, Bolingbrook, Will County, Illinois, United States, 60440

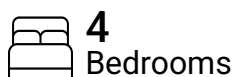


Total Area: 3556 sq. ft

Basement: 0 sq. ft, 1st Floor: 1576 sq. ft, 2nd Floor: 1980 sq. ft

Excluded: Basement 1055 sq. ft, Low ceiling 177 sq. ft, Garage 590 sq. ft, Fireplace 10 sq. ft, Open to below 88 sq. ft, Walls: 300 sq. ft

Property summary



Home data report

257 Hanburg Lane, Bolingbrook, Will County, Illinois, United States, 60440



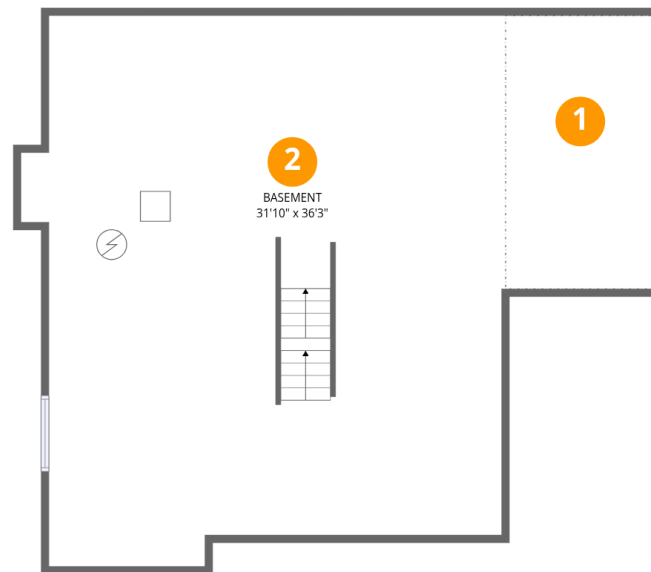
1
Half baths



1
Garages

Home data report

257 Hanburg Lane, Bolingbrook, Will County, Illinois, United States, 60440



Room dimensions

Floor 1 Below grade

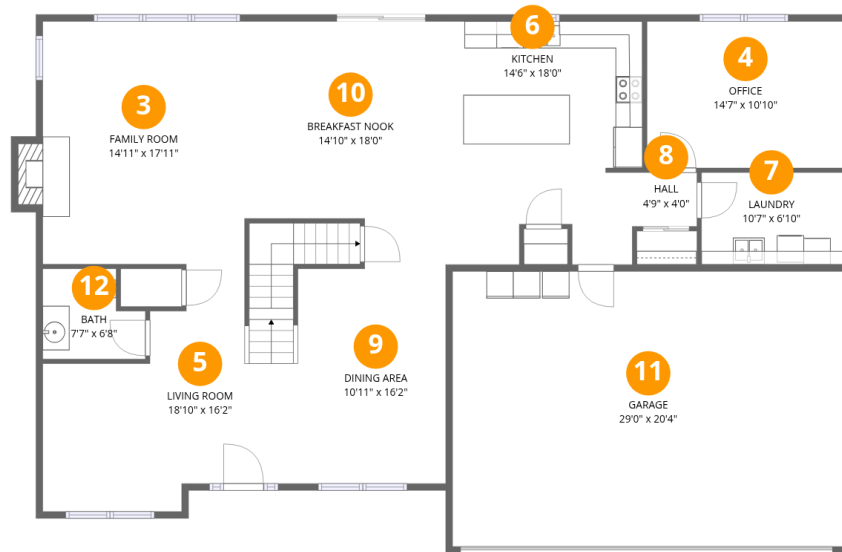
Total:0sqft

Excluded: 1232sqft

#		Dimensions	sqft	Counted as living area
1	Crawl Space	9'10" x 18'0"	177 sq. ft	No
2	Basement	31'10" x 36'3"	1154 sq. ft	No

Home data report

257 Hanburg Lane, Bolingbrook, Will County, Illinois, United States, 60440



Room dimensions

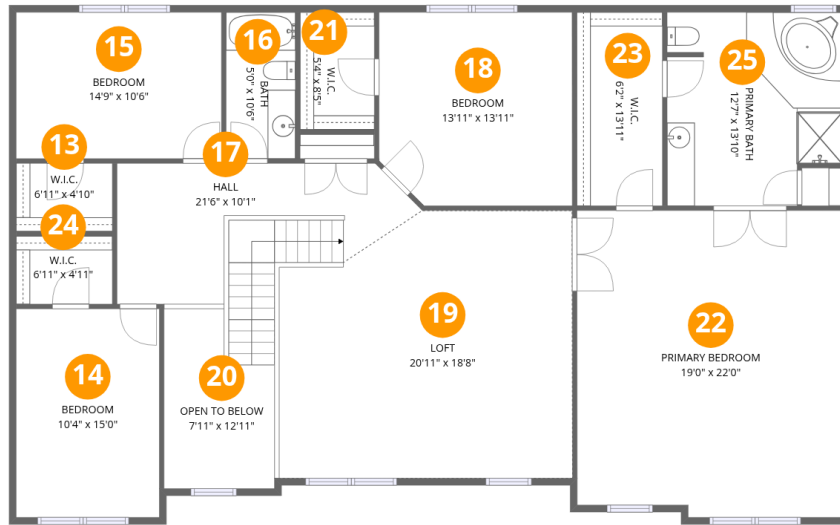
Floor 2

Total:1576sqft Excluded: 600sqft

#		Dimensions	sqft	Counted as living area
3	Family Room	14'11" x 17'11"	268 sq. ft	Yes
4	Office	14'7" x 10'10"	158 sq. ft	Yes
5	Living Room	18'10" x 16'2"	306 sq. ft	Yes
6	Kitchen	14'6" x 18'0"	262 sq. ft	Yes
7	Laundry	10'7" x 6'10"	72 sq. ft	Yes
8	Hall	4'9" x 4'0"	19 sq. ft	Yes
9	Dining Area	10'11" x 16'2"	177 sq. ft	Yes
10	Breakfast Nook	14'10" x 18'0"	268 sq. ft	Yes
11	Garage	29'0" x 20'4"	590 sq. ft	No
12	Bath	7'7" x 6'8"	51 sq. ft	Yes

Home data report

257 Hanburg Lane, Bolingbrook, Will County, Illinois, United States, 60440



Room dimensions

Floor 3

Total:1980sqft Excluded: 88sqft

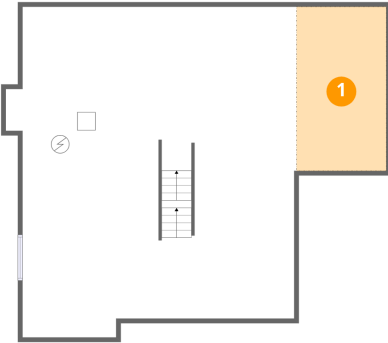
#		Dimensions	sqft	Counted as living area
13	W.I.C.	6'11" x 4'10"	34 sq. ft	Yes
14	Bedroom	10'4" x 15'0"	154 sq. ft	Yes
15	Bedroom	14'9" x 10'6"	155 sq. ft	Yes
16	Bath	5'0" x 10'6"	52 sq. ft	Yes
17	Hall	21'6" x 10'1"	218 sq. ft	Yes
18	Bedroom	13'11" x 13'11"	193 sq. ft	Yes
19	Loft	20'11" x 18'8"	391 sq. ft	Yes
20	Open To Below	7'11" x 12'11"	102 sq. ft	No
21	W.I.C.	5'4" x 8'5"	45 sq. ft	Yes
22	Primary Bedroom	19'0" x 22'0"	419 sq. ft	Yes
23	W.I.C.	6'2" x 13'11"	86 sq. ft	Yes

Home data report

257 Hanburg Lane, Bolingbrook, Will County, Illinois, United States, 60440

#		Dimensions	sqft	Counted as living area
24	W.I.C.	6'11" x 4'11"	34 sq. ft	Yes
25	Primary Bath	12'7" x 13'10"	174 sq. ft	Yes

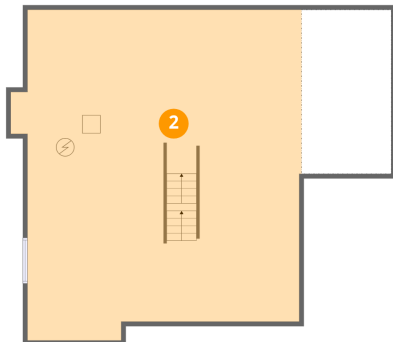
1 Floor 1 - Crawl Space



Dimensions: 9'10" x 18'0"
Area: 177 sq. ft
Counted as living area: No

Heated: No
Finished: No
Enclosed: No
Contiguous: Yes
Permitted: No
Wet space: No
Addition: No
Conversion: No

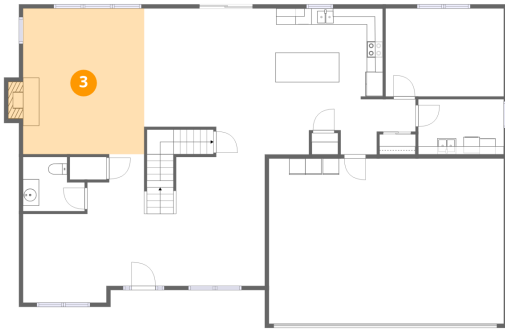
2 Floor 1 - Basement



Dimensions: 31'10" x 36'3"
Area: 1154 sq. ft
Counted as living area: No

Heated: Yes
Finished: No
Enclosed: Yes
Contiguous: Yes
Permitted: Yes
Wet space: No
Addition: No
Conversion: No

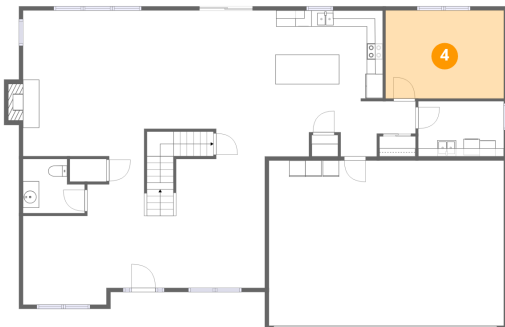
3 Floor 2 - Family Room



Dimensions: 14'11" x 17'11"
Area: 268 sq. ft
Counted as living area: Yes

Heated: Yes
Finished: Yes
Enclosed: Yes
Contiguous: Yes
Permitted: Yes
Wet space: No
Addition: No
Conversion: No

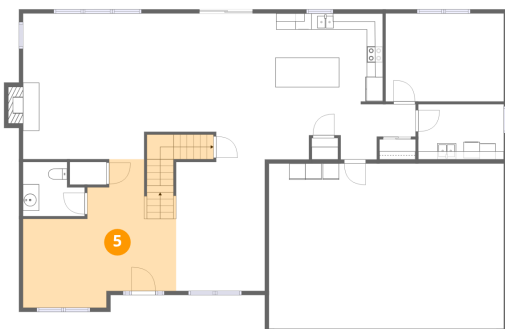
4 Floor 2 - Office



Dimensions: 14'7" x 10'10"
Area: 158 sq. ft
Counted as living area: Yes

Heated: Yes
Finished: Yes
Enclosed: Yes
Contiguous: Yes
Permitted: Yes
Wet space: No
Addition: No
Conversion: No

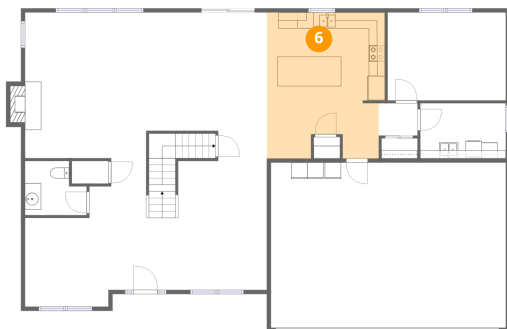
5 Floor 2 - Living Room



Dimensions: 18'10" x 16'2"
Area: 306 sq. ft
Counted as living area: Yes

Heated: Yes
Finished: Yes
Enclosed: Yes
Contiguous: Yes
Permitted: Yes
Wet space: No
Addition: No
Conversion: No

6 Floor 2 - Kitchen



Dimensions: 14'6" x 18'0"
Area: 262 sq. ft
Counted as living area: Yes

Heated: Yes
Finished: Yes
Enclosed: Yes
Contiguous: Yes
Permitted: Yes
Wet space: No
Addition: No
Conversion: No

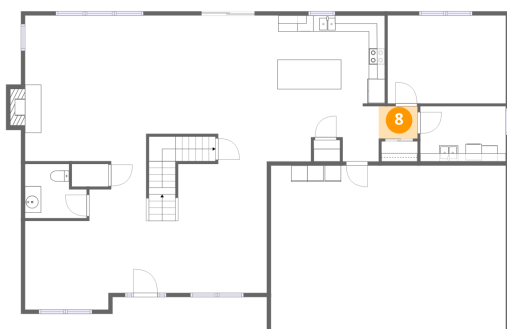
7 Floor 2 - Laundry



Dimensions: 10'7" x 6'10"
Area: 72 sq. ft
Counted as living area: Yes

Heated: Yes
Finished: Yes
Enclosed: Yes
Contiguous: Yes
Permitted: Yes
Wet space: No
Addition: No
Conversion: No

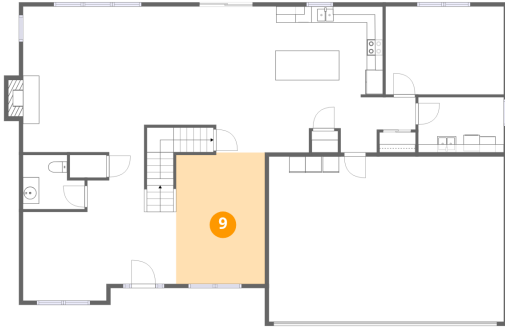
8 Floor 2 - Hall



Dimensions: 4'9" x 4'0"
Area: 19 sq. ft
Counted as living area: Yes

Heated: Yes
Finished: Yes
Enclosed: Yes
Contiguous: Yes
Permitted: Yes
Wet space: No
Addition: No
Conversion: No

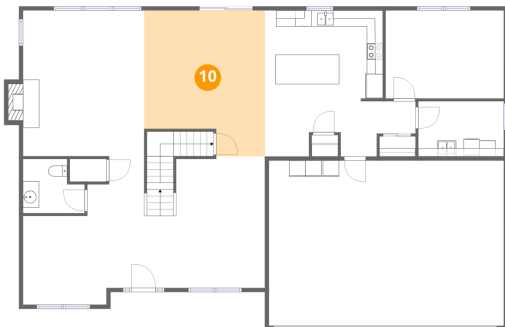
9 Floor 2 - Dining Area



Dimensions: 10'11" x 16'2"
Area: 177 sq. ft
Counted as living area: Yes

Heated: Yes
Finished: Yes
Enclosed: Yes
Contiguous: Yes
Permitted: Yes
Wet space: No
Addition: No
Conversion: No

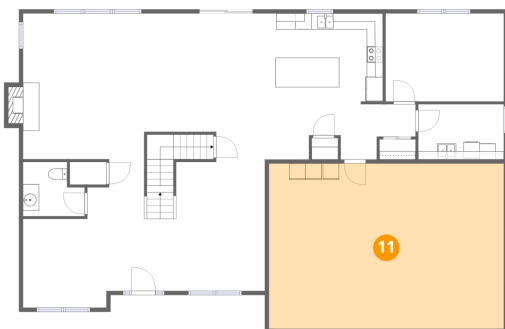
10 Floor 2 - Breakfast Nook



Dimensions: 14'10" x 18'0"
Area: 268 sq. ft
Counted as living area: Yes

Heated: Yes
Finished: Yes
Enclosed: Yes
Contiguous: Yes
Permitted: Yes
Wet space: No
Addition: No
Conversion: No

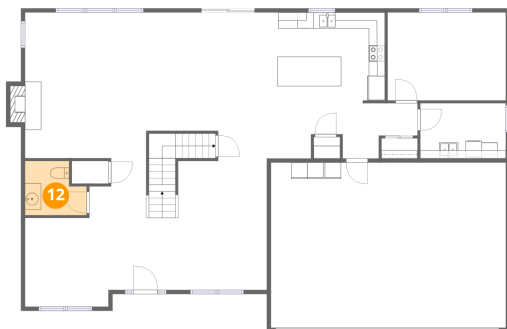
11 Floor 2 - Garage



Dimensions: 29'0" x 20'4"
Area: 590 sq. ft
Counted as living area: No

Heated: No
Finished: No
Enclosed: Yes
Contiguous: Yes
Permitted: Yes
Wet space: No
Addition: No
Conversion: No

12 Floor 2 - Bath



Dimensions: 7'7" x 6'8"
Area: 51 sq. ft
Counted as living area: Yes

Heated: Yes
Finished: Yes
Enclosed: Yes
Contiguous: Yes
Permitted: Yes
Wet space: Yes
Addition: No
Conversion: No

13 Floor 3 - W.I.C.



Dimensions: 6'11" x 4'10"
Area: 34 sq. ft
Counted as living area: Yes

Heated: Yes
Finished: Yes
Enclosed: Yes
Contiguous: Yes
Permitted: Yes
Wet space: No
Addition: No
Conversion: No

14 Floor 3 - Bedroom



Dimensions: 10'4" x 15'0"
Area: 154 sq. ft
Counted as living area: Yes

Heated: Yes
Finished: Yes
Enclosed: Yes
Contiguous: Yes
Permitted: Yes
Wet space: No
Addition: No
Conversion: No

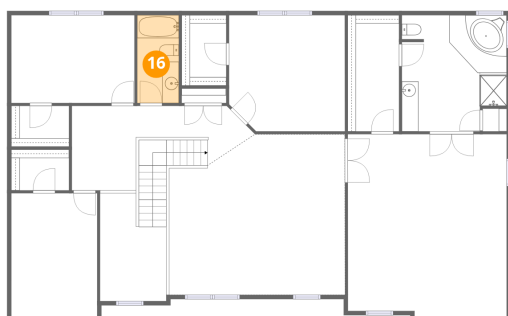
15 Floor 3 - Bedroom



Dimensions: 14'9" x 10'6"
Area: 155 sq. ft
Counted as living area: Yes

Heated: Yes
Finished: Yes
Enclosed: Yes
Contiguous: Yes
Permitted: Yes
Wet space: No
Addition: No
Conversion: No

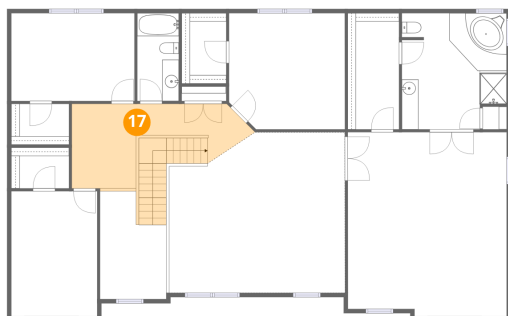
16 Floor 3 - Bath



Dimensions: 5'0" x 10'6"
Area: 52 sq. ft
Counted as living area: Yes

Heated: Yes
Finished: Yes
Enclosed: Yes
Contiguous: Yes
Permitted: Yes
Wet space: Yes
Addition: No
Conversion: No

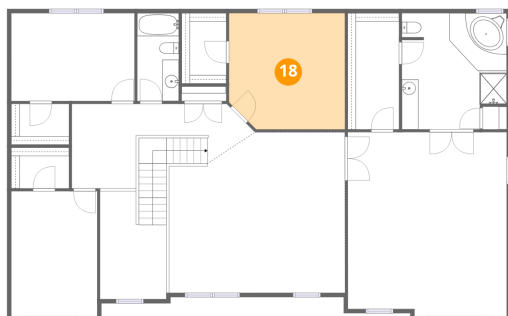
17 Floor 3 - Hall



Dimensions: 21'6" x 10'1"
Area: 218 sq. ft
Counted as living area: Yes

Heated: Yes
Finished: Yes
Enclosed: Yes
Contiguous: Yes
Permitted: Yes
Wet space: No
Addition: No
Conversion: No

18 Floor 3 - Bedroom



Dimensions: 13'11" x 13'11"

Area: 193 sq. ft

Counted as living area: Yes

Heated: Yes

Finished: Yes

Enclosed: Yes

Contiguous: Yes

Permitted: Yes

Wet space: No

Addition: No

Conversion: No

19 Floor 3 - Loft



Dimensions: 20'11" x 18'8"

Area: 391 sq. ft

Counted as living area: Yes

Heated: Yes

Finished: Yes

Enclosed: Yes

Contiguous: Yes

Permitted: Yes

Wet space: No

Addition: No

Conversion: No

20 Floor 3 - Open To Below



Dimensions: 7'11" x 12'11"

Area: 102 sq. ft

Counted as living area: No

Heated: No

Finished: No

Enclosed: No

Contiguous: Yes

Permitted: No

Wet space: No

Addition: No

Conversion: No

21 Floor 3 - W.I.C.



Dimensions: 5'4" x 8'5"
Area: 45 sq. ft
Counted as living area: Yes

Heated: Yes
Finished: Yes
Enclosed: Yes
Contiguous: Yes
Permitted: Yes
Wet space: No
Addition: No
Conversion: No

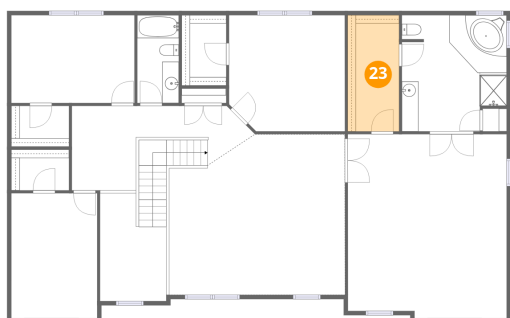
22 Floor 3 - Primary Bedroom



Dimensions: 19'0" x 22'0"
Area: 419 sq. ft
Counted as living area: Yes

Heated: Yes
Finished: Yes
Enclosed: Yes
Contiguous: Yes
Permitted: Yes
Wet space: No
Addition: No
Conversion: No

23 Floor 3 - W.I.C.



Dimensions: 6'2" x 13'11"
Area: 86 sq. ft
Counted as living area: Yes

Heated: Yes
Finished: Yes
Enclosed: Yes
Contiguous: Yes
Permitted: Yes
Wet space: No
Addition: No
Conversion: No

24 Floor 3 - W.I.C.



Dimensions: 6'11" x 4'11"
Area: 34 sq. ft
Counted as living area: Yes

Heated: Yes
Finished: Yes
Enclosed: Yes
Contiguous: Yes
Permitted: Yes
Wet space: No
Addition: No
Conversion: No

25 Floor 3 - Primary Bath



Dimensions: 12'7" x 13'10"
Area: 174 sq. ft
Counted as living area: Yes

Heated: Yes
Finished: Yes
Enclosed: Yes
Contiguous: Yes
Permitted: Yes
Wet space: Yes
Addition: No
Conversion: No