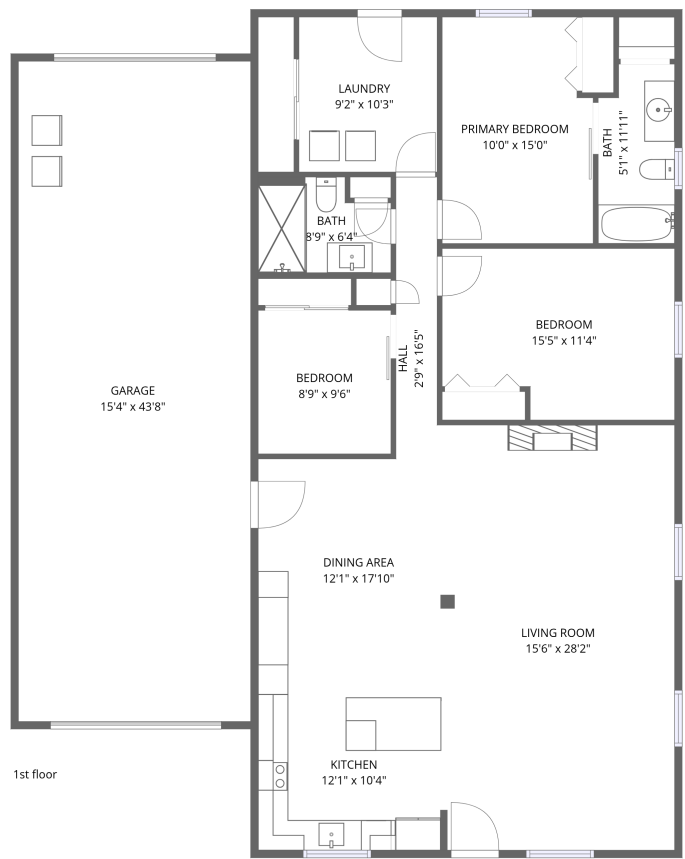


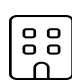
Home data report


30485 South 4537 Road, Cleora, Afton, Delaware County,
Oklahoma, United States, 74331




Total Area: 1521 sq. ft
1st Floor: 1521 sq. ft
Excluded: Garage 672 sq. ft, Walls: 122 sq. ft

Property summary

 **1** Floors

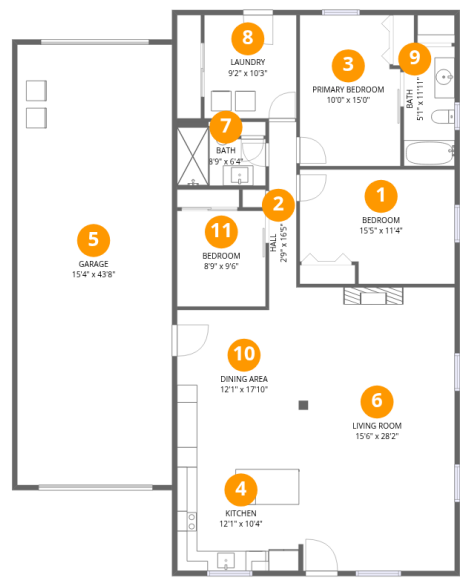
 **3** Bedrooms

 **2** Bathrooms

 **1** Garages

Home data report

30485 South 4537 Road, Cleora, Afton, Delaware County,
Oklahoma, United States, 74331



Room dimensions

Floor 1 Total:1521sqft Excluded: 672sqft

#		Dimensions	sqft	Counted as living area
1	Bedroom	15'5" x 11'4"	175 sq. ft	Yes
2	Hall	2'9" x 16'5"	45 sq. ft	Yes
3	Primary Bedroom	10'0" x 15'0"	150 sq. ft	Yes
4	Kitchen	12'1" x 10'4"	124 sq. ft	Yes
5	Garage	15'4" x 43'8"	670 sq. ft	No
6	Living Room	15'6" x 28'2"	437 sq. ft	Yes
7	Bath	8'9" x 6'4"	56 sq. ft	Yes
8	Laundry	9'2" x 10'3"	94 sq. ft	Yes
9	Bath	5'1" x 11'11"	60 sq. ft	Yes
10	Dining Area	12'1" x 17'10"	215 sq. ft	Yes
11	Bedroom	8'9" x 9'6"	83 sq. ft	Yes

1 Floor 1 - Bedroom



Dimensions: 15'5" x 11'4"
Area: 175 sq. ft
Counted as living area: Yes

Heated: Yes
Finished: Yes
Enclosed: Yes
Contiguous: Yes
Permitted: Yes
Wet space: No
Addition: No
Conversion: No

2 Floor 1 - Hall



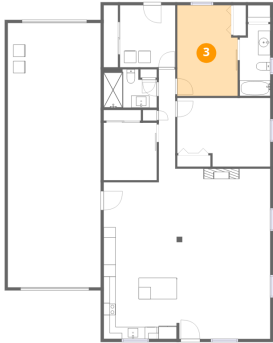
Dimensions: 2'9" x 16'5"
Area: 45 sq. ft
Counted as living area: Yes

Heated: Yes
Finished: Yes
Enclosed: Yes
Contiguous: Yes
Permitted: Yes
Wet space: No
Addition: No
Conversion: No

Home data report

30485 South 4537 Road, Cleora, Afton, Delaware County,
Oklahoma, United States, 74331

3 Floor 1 - Primary Bedroom



Dimensions: 10'0" x 15'0"
Area: 150 sq. ft
Counted as living area: Yes

Heated: Yes
Finished: Yes
Enclosed: Yes
Contiguous: Yes
Permitted: Yes
Wet space: No
Addition: No
Conversion: No

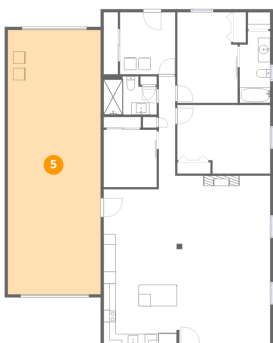
4 Floor 1 - Kitchen



Dimensions: 12'1" x 10'4"
Area: 124 sq. ft
Counted as living area: Yes

Heated: Yes
Finished: Yes
Enclosed: Yes
Contiguous: Yes
Permitted: Yes
Wet space: No
Addition: No
Conversion: No

5 Floor 1 - Garage



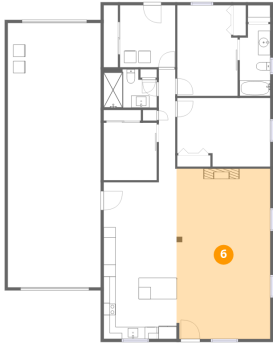
Dimensions: 15'4" x 43'8"
Area: 670 sq. ft
Counted as living area: No

Heated: No
Finished: No
Enclosed: Yes
Contiguous: Yes
Permitted: Yes
Wet space: No
Addition: No
Conversion: No

Home data report

30485 South 4537 Road, Cleora, Afton, Delaware County,
Oklahoma, United States, 74331

6 Floor 1 - Living Room



Dimensions: 15'6" x 28'2"
Area: 437 sq. ft
Counted as living area: Yes

Heated: Yes
Finished: Yes
Enclosed: Yes
Contiguous: Yes
Permitted: Yes
Wet space: No
Addition: No
Conversion: No

7 Floor 1 - Bath



Dimensions: 8'9" x 6'4"
Area: 56 sq. ft
Counted as living area: Yes

Heated: Yes
Finished: Yes
Enclosed: Yes
Contiguous: Yes
Permitted: Yes
Wet space: Yes
Addition: No
Conversion: No

8 Floor 1 - Laundry

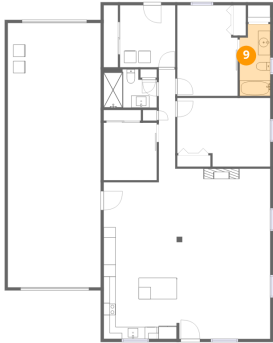


Dimensions: 9'2" x 10'3"
Area: 94 sq. ft
Counted as living area: Yes

Heated: Yes
Finished: Yes
Enclosed: Yes
Contiguous: Yes
Permitted: Yes
Wet space: No
Addition: No
Conversion: No

30485 South 4537 Road, Cleora, Afton, Delaware County,
Oklahoma, United States, 74331

9 Floor 1 - Bath



Dimensions: 5'1" x 11'11"
Area: 60 sq. ft
Counted as living area: Yes

Heated: Yes
Finished: Yes
Enclosed: Yes
Contiguous: Yes
Permitted: Yes
Wet space: Yes
Addition: No
Conversion: No

10 Floor 1 - Dining Area



Dimensions: 12'1" x 17'10"
Area: 215 sq. ft
Counted as living area: Yes

Heated: Yes
Finished: Yes
Enclosed: Yes
Contiguous: Yes
Permitted: Yes
Wet space: No
Addition: No
Conversion: No

11 Floor 1 - Bedroom



Dimensions: 8'9" x 9'6"
Area: 83 sq. ft
Counted as living area: Yes

Heated: Yes
Finished: Yes
Enclosed: Yes
Contiguous: Yes
Permitted: Yes
Wet space: No
Addition: No
Conversion: No