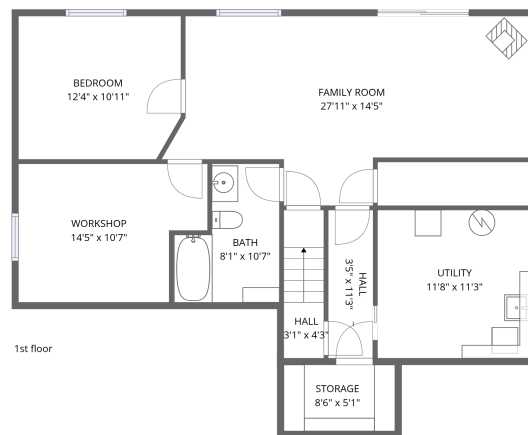
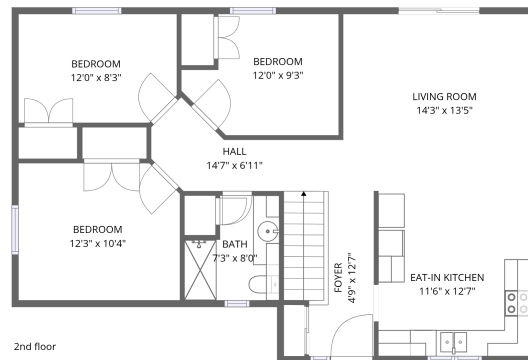


Home data report

315 Colborne Street, Elora, Ontario N0B 1S0, Canada



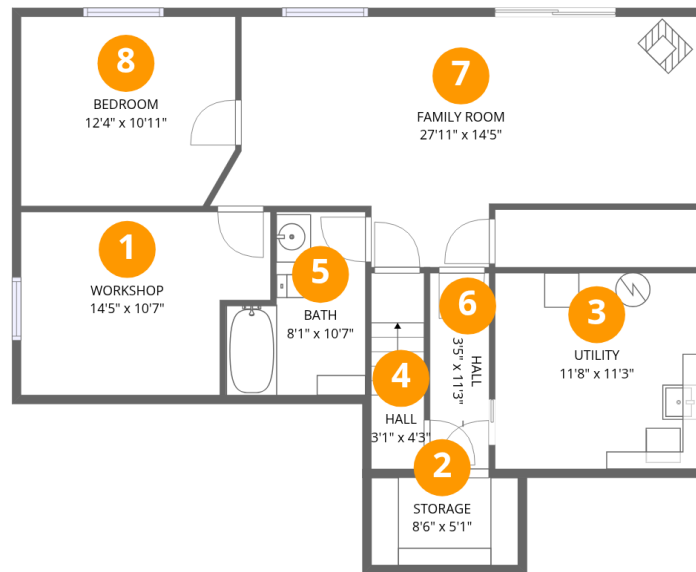
Total Area: 1589 sq. ft

1st Floor: 661 sq. ft, 2nd Floor: 928 sq. ft

Excluded: Storage 43 sq. ft, Utility 131 sq. ft, Workshop 136 sq. ft, Walls: 141 sq. ft

Property summary





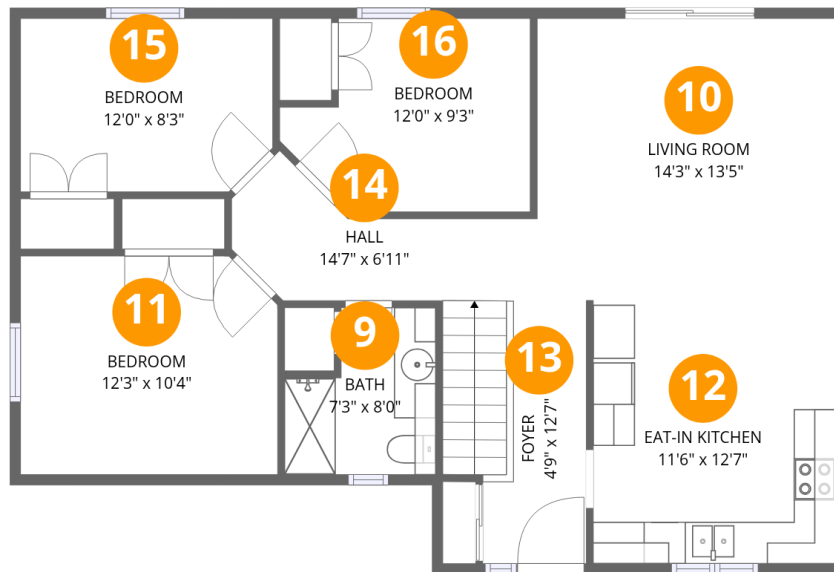
Room dimensions

Floor 1

Total:661sqft

Excluded: 310sqft

#		Dimensions	sqft	Counted as living area
1	Workshop	14'5" x 10'7"	136 sq. ft	No
2	Storage	8'6" x 5'1"	43 sq. ft	No
3	Utility	11'8" x 11'3"	131 sq. ft	No
4	Hall	3'1" x 4'3"	34 sq. ft	Yes
5	Bath	8'1" x 10'7"	69 sq. ft	Yes
6	Hall	3'5" x 11'3"	39 sq. ft	Yes
7	Family Room	27'11" x 14'5"	311 sq. ft	Yes
8	Bedroom	12'4" x 10'11"	132 sq. ft	Yes



Room dimensions

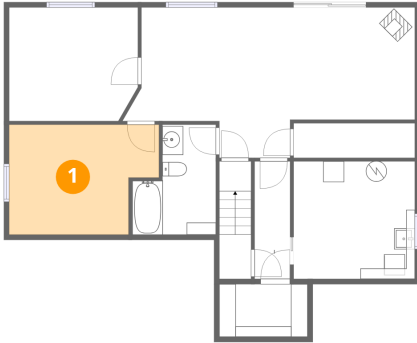
Floor 2

Total:928sqft

Excluded: 0sqft

#		Dimensions	sqft	Counted as living area
9	Bath	7'3" x 8'0"	49 sq. ft	Yes
10	Living Room	14'3" x 13'5"	191 sq. ft	Yes
11	Bedroom	12'3" x 10'4"	125 sq. ft	Yes
12	Eat-in Kitchen	11'6" x 12'7"	146 sq. ft	Yes
13	Foyer	4'9" x 12'7"	78 sq. ft	Yes
14	Hall	14'7" x 6'11"	64 sq. ft	Yes
15	Bedroom	12'0" x 8'3"	97 sq. ft	Yes
16	Bedroom	12'0" x 9'3"	93 sq. ft	Yes

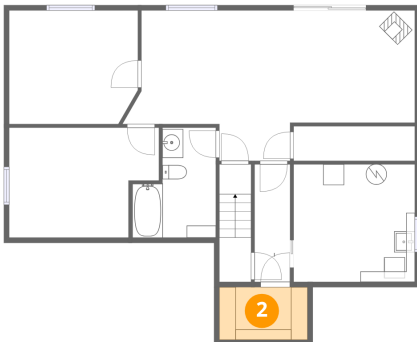
1 Floor 1 - Workshop



Dimensions: 14'5" x 10'7"
Area: 136 sq. ft
Counted as living area: No

Heated: No
Finished: No
Enclosed: Yes
Contiguous: Yes
Permitted: Yes
Wet space: No
Addition: No
Conversion: No

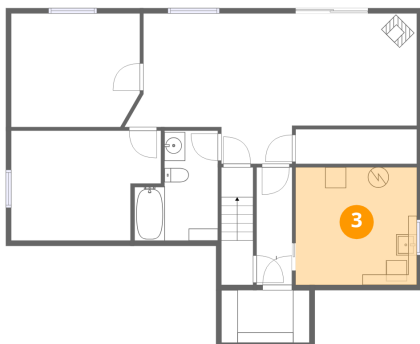
2 Floor 1 - Storage



Dimensions: 8'6" x 5'1"
Area: 43 sq. ft
Counted as living area: No

Heated: No
Finished: No
Enclosed: No
Contiguous: Yes
Permitted: Yes
Wet space: No
Addition: No
Conversion: No

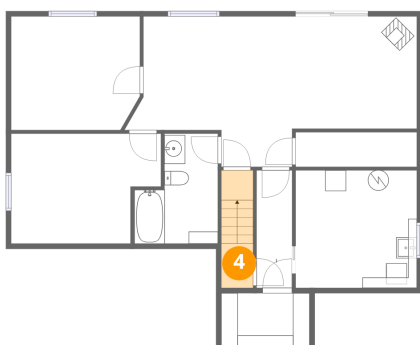
3 Floor 1 - Utility



Dimensions: 11'8" x 11'3"
Area: 131 sq. ft
Counted as living area: No

Heated: Yes
Finished: No
Enclosed: Yes
Contiguous: Yes
Permitted: Yes
Wet space: No
Addition: No
Conversion: No

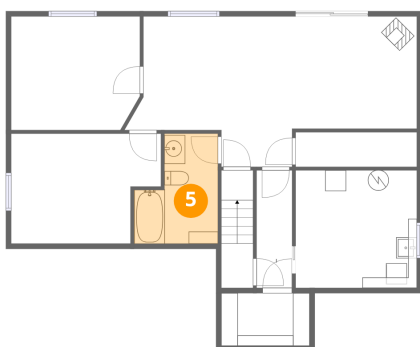
4 Floor 1 - Hall



Dimensions: 3'1" x 4'3"
Area: 34 sq. ft
Counted as living area: Yes

Heated: Yes
Finished: Yes
Enclosed: Yes
Contiguous: Yes
Permitted: Yes
Wet space: No
Addition: No
Conversion: No

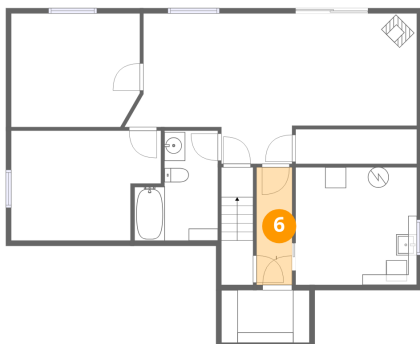
5 Floor 1 - Bath



Dimensions: 8'1" x 10'7"
Area: 69 sq. ft
Counted as living area: Yes

Heated: Yes
Finished: Yes
Enclosed: Yes
Contiguous: Yes
Permitted: Yes
Wet space: Yes
Addition: No
Conversion: No

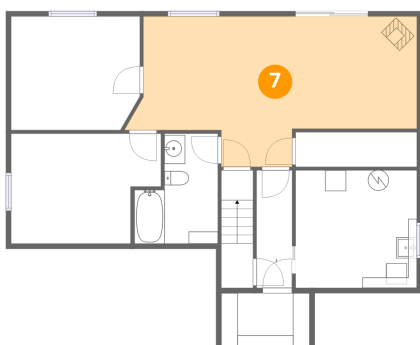
6 Floor 1 - Hall



Dimensions: 3'5" x 11'3"
Area: 39 sq. ft
Counted as living area: Yes

Heated: Yes
Finished: Yes
Enclosed: Yes
Contiguous: Yes
Permitted: Yes
Wet space: No
Addition: No
Conversion: No

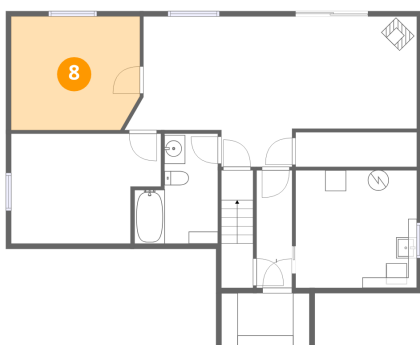
7 Floor 1 - Family Room



Dimensions: 27'11" x 14'5"
Area: 311 sq. ft
Counted as living area: Yes

Heated: Yes
Finished: Yes
Enclosed: Yes
Contiguous: Yes
Permitted: Yes
Wet space: No
Addition: No
Conversion: No

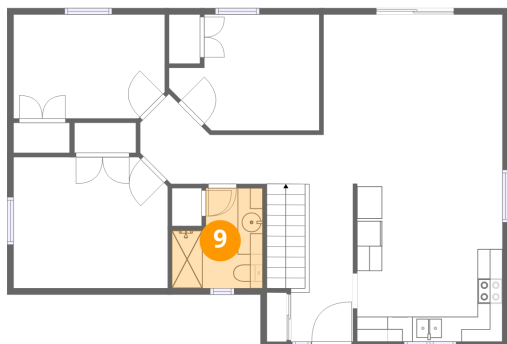
8 Floor 1 - Bedroom



Dimensions: 12'4" x 10'11"
Area: 132 sq. ft
Counted as living area: Yes

Heated: Yes
Finished: Yes
Enclosed: Yes
Contiguous: Yes
Permitted: Yes
Wet space: No
Addition: No
Conversion: No

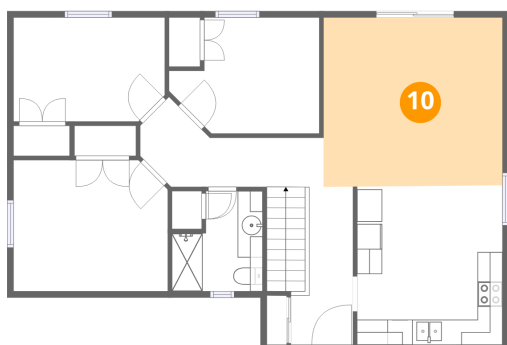
9 Floor 2 - Bath



Dimensions: 7'3" x 8'0"
Area: 49 sq. ft
Counted as living area: Yes

Heated: Yes
Finished: Yes
Enclosed: Yes
Contiguous: Yes
Permitted: Yes
Wet space: Yes
Addition: No
Conversion: No

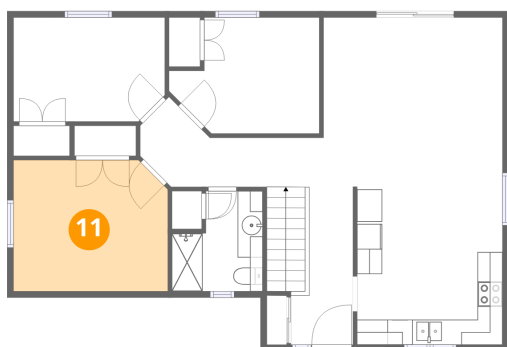
10 Floor 2 - Living Room



Dimensions: 14'3" x 13'5"
Area: 191 sq. ft
Counted as living area: Yes

Heated: Yes
Finished: Yes
Enclosed: Yes
Contiguous: Yes
Permitted: Yes
Wet space: No
Addition: No
Conversion: No

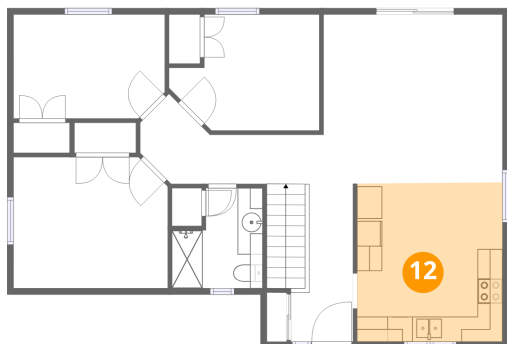
11 Floor 2 - Bedroom



Dimensions: 12'3" x 10'4"
Area: 125 sq. ft
Counted as living area: Yes

Heated: Yes
Finished: Yes
Enclosed: Yes
Contiguous: Yes
Permitted: Yes
Wet space: No
Addition: No
Conversion: No

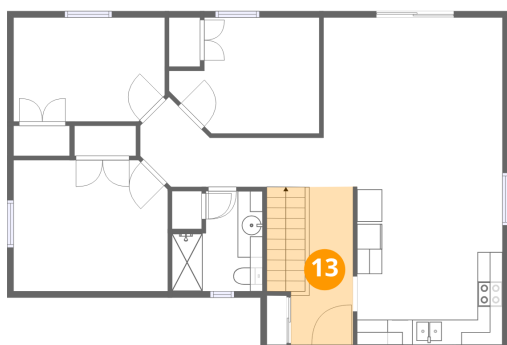
12 Floor 2 - Eat-in Kitchen



Dimensions: 11'6" x 12'7"
Area: 146 sq. ft
Counted as living area: Yes

Heated: Yes
Finished: Yes
Enclosed: Yes
Contiguous: Yes
Permitted: Yes
Wet space: No
Addition: No
Conversion: No

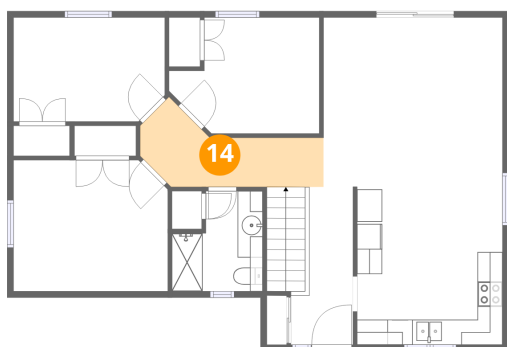
13 Floor 2 - Foyer



Dimensions: 4'9" x 12'7"
Area: 78 sq. ft
Counted as living area: Yes

Heated: Yes
Finished: Yes
Enclosed: Yes
Contiguous: Yes
Permitted: Yes
Wet space: No
Addition: No
Conversion: No

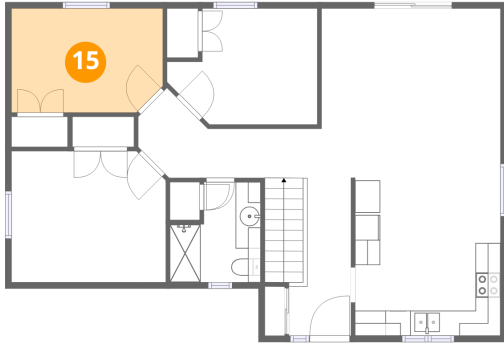
14 Floor 2 - Hall



Dimensions: 14'7" x 6'11"
Area: 64 sq. ft
Counted as living area: Yes

Heated: Yes
Finished: Yes
Enclosed: Yes
Contiguous: Yes
Permitted: Yes
Wet space: No
Addition: No
Conversion: No

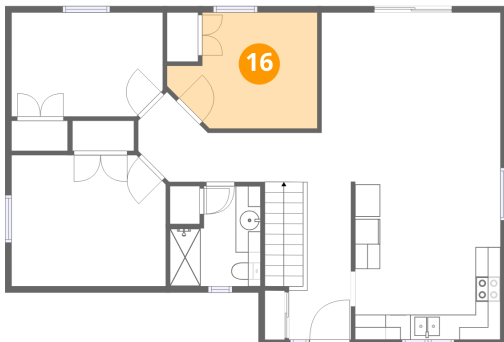
15 Floor 2 - Bedroom



Dimensions: 12'0" x 8'3"
Area: 97 sq. ft
Counted as living area: Yes

Heated: Yes
Finished: Yes
Enclosed: Yes
Contiguous: Yes
Permitted: Yes
Wet space: No
Addition: No
Conversion: No

16 Floor 2 - Bedroom



Dimensions: 12'0" x 9'3"
Area: 93 sq. ft
Counted as living area: Yes

Heated: Yes
Finished: Yes
Enclosed: Yes
Contiguous: Yes
Permitted: Yes
Wet space: No
Addition: No
Conversion: No