

Home report

1406 Northeast Hunters Court, Blue Springs, Jackson County,
Missouri, United States, 64014



Total Area: 2336 sq. ft

Below Ground: 612 sq. ft, Floor 2: 846 sq. ft, Floor 3: 878 sq. ft

Excluded: Storage 121 sq. ft, Utility 37 sq. ft, Patio 2576 sq. ft, Garage 672 sq. ft, Fireplace 14 sq. ft, Walls: 221 sq. ft

Property summary

 **3** Floors

 **4** Bedrooms

 **2** Bathrooms

Home report

**1406 Northeast Hunters Court, Blue Springs, Jackson County,
Missouri, United States, 64014**



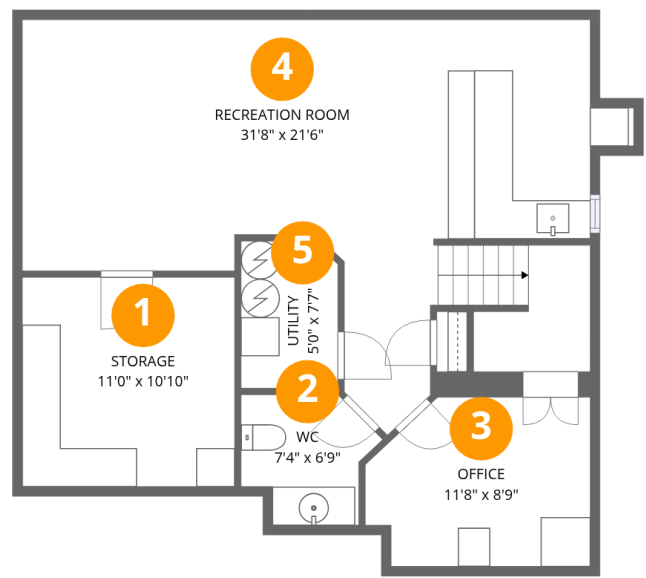
2
Half baths



1
Garages

Home report

1406 Northeast Hunters Court, Blue Springs, Jackson County,
Missouri, United States, 64014



Room dimensions

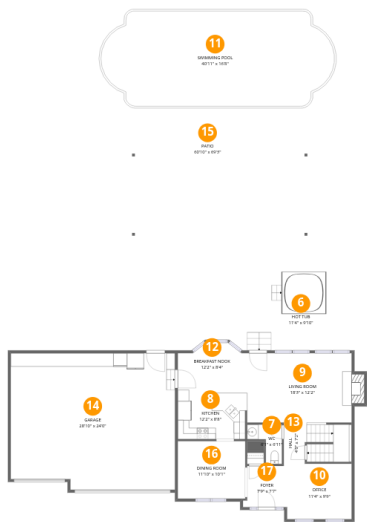
Floor 1 Below ground

Total:612sqft Excluded: 158sqft

#		Max Dimensions	sqft	Included
1	Storage	11'0" x 10'10"	119 sq. ft	No
2	WC	7'4" x 6'9"	39 sq. ft	Yes
3	Office	11'8" x 8'9"	93 sq. ft	Yes
4	Recreation Room	31'8" x 21'6"	398 sq. ft	Yes
5	Utility	5'0" x 7'7"	37 sq. ft	No

Home report

1406 Northeast Hunters Court, Blue Springs, Jackson County, Missouri, United States, 64014



Room dimensions

Floor 2 Total:846sqft Excluded: 3262sqft

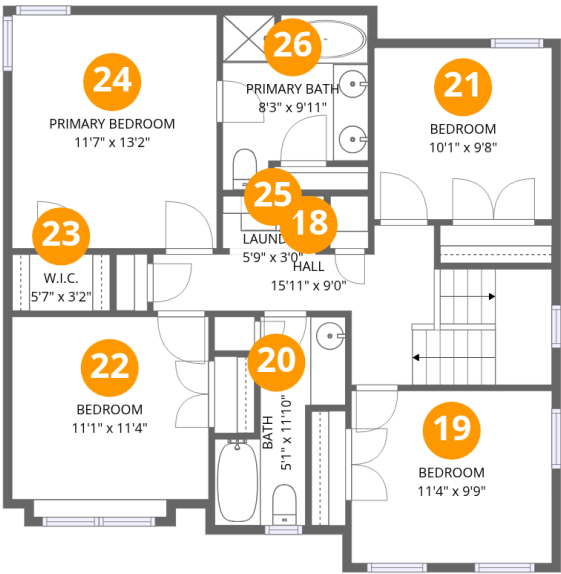
#		Max Dimensions	sqft	Included
6	Hot Tub	11'4" x 9'10"	111 sq. ft	No
7	WC	6'1" x 6'11"	28 sq. ft	Yes
8	Kitchen	12'2" x 8'8"	104 sq. ft	Yes
9	Living Room	18'3" x 12'2"	235 sq. ft	Yes
10	Office	11'4" x 9'9"	110 sq. ft	Yes
11	Swimming Pool	40'11" x 16'8"	612 sq. ft	No
12	Breakfast Nook	12'2" x 8'4"	90 sq. ft	Yes
13	Hall	4'0" x 7'2"	79 sq. ft	Yes
14	Garage	28'10" x 24'0"	672 sq. ft	No
15	Patio	60'10" x 69'3"	3188 sq. ft	No
16	Dining Room	11'10" x 10'1"	120 sq. ft	Yes

Home report

1406 Northeast Hunters Court, Blue Springs, Jackson County,
Missouri, United States, 64014

#		Max Dimensions	sqft	Included
17	Foyer	7'9" x 7'7"	52 sq. ft	Yes

1406 Northeast Hunters Court, Blue Springs, Jackson County,
Missouri, United States, 64014



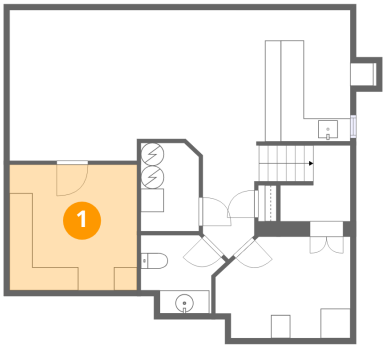
Room dimensions

Floor 3 Total:878sqft Excluded: 0sqft

#		Max Dimensions	sqft	Included
18	Hall	15'11" x 9'0"	119 sq. ft	Yes
19	Bedroom	11'4" x 9'9"	110 sq. ft	Yes
20	Bath	5'1" x 11'10"	54 sq. ft	Yes
21	Bedroom	10'1" x 9'8"	98 sq. ft	Yes
22	Bedroom	11'1" x 11'4"	122 sq. ft	Yes
23	W.I.C.	5'7" x 3'2"	18 sq. ft	Yes
24	Primary Bedroom	11'7" x 13'2"	153 sq. ft	Yes
25	Laundry	5'9" x 3'0"	17 sq. ft	Yes
26	Primary Bath	8'3" x 9'11"	71 sq. ft	Yes

1406 Northeast Hunters Court, Blue Springs, Jackson County,
Missouri, United States, 64014

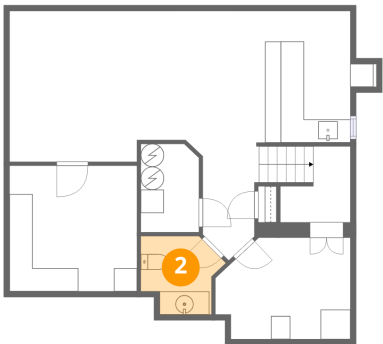
1 Floor 1 - Storage



Max Dimensions: 11'0" x 10'10"
Calculated Area: 119 sq. ft
Included: No

Heated: No
Finished: No
Enclosed: No
Contiguous: Yes
Permitted: Yes
Wet space: No
Addition: No
Conversion: No

2 Floor 1 - WC



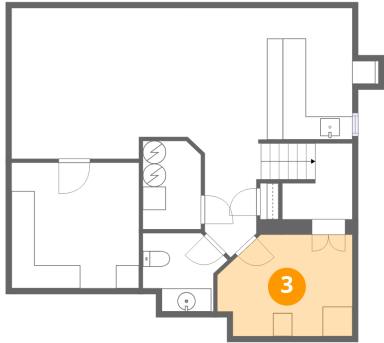
Max Dimensions: 7'4" x 6'9"
Calculated Area: 39 sq. ft
Included: Yes

Heated: Yes
Finished: Yes
Enclosed: Yes
Contiguous: Yes
Permitted: Yes
Wet space: Yes
Addition: No
Conversion: No

Home report

1406 Northeast Hunters Court, Blue Springs, Jackson County,
Missouri, United States, 64014

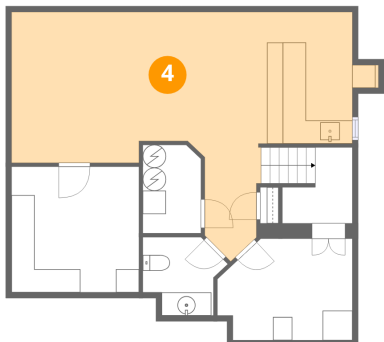
3 Floor 1 - Office



Max Dimensions: 11'8" x 8'9"
Calculated Area: 93 sq. ft
Included: Yes

Heated: Yes
Finished: Yes
Enclosed: Yes
Contiguous: Yes
Permitted: Yes
Wet space: No
Addition: No
Conversion: No

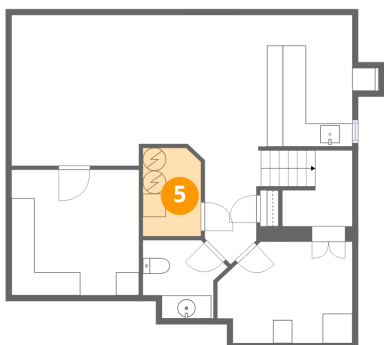
4 Floor 1 - Recreation Room



Max Dimensions: 31'8" x 21'6"
Calculated Area: 398 sq. ft
Included: Yes

Heated: Yes
Finished: Yes
Enclosed: Yes
Contiguous: Yes
Permitted: Yes
Wet space: No
Addition: No
Conversion: No

5 Floor 1 - Utility

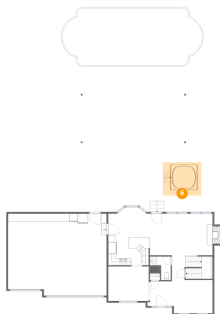


Max Dimensions: 5'0" x 7'7"
Calculated Area: 37 sq. ft
Included: No

Heated: Yes
Finished: No
Enclosed: Yes
Contiguous: Yes
Permitted: Yes
Wet space: No
Addition: No
Conversion: No

1406 Northeast Hunters Court, Blue Springs, Jackson County,
Missouri, United States, 64014

6 Floor 2 - Hot Tub



Max Dimensions: 11'4" x 9'10"
Calculated Area: 111 sq. ft
Included: No

Heated: No
Finished: No
Enclosed: No
Contiguous: Yes
Permitted: No
Wet space: No
Addition: No
Conversion: No

7 Floor 2 - WC



Max Dimensions: 6'1" x 6'11"
Calculated Area: 28 sq. ft
Included: Yes

Heated: Yes
Finished: Yes
Enclosed: Yes
Contiguous: Yes
Permitted: Yes
Wet space: Yes
Addition: No
Conversion: No

8 Floor 2 - Kitchen



Max Dimensions: 12'2" x 8'8"
Calculated Area: 104 sq. ft
Included: Yes

Heated: Yes
Finished: Yes
Enclosed: Yes
Contiguous: Yes
Permitted: Yes
Wet space: No
Addition: No
Conversion: No

1406 Northeast Hunters Court, Blue Springs, Jackson County,
Missouri, United States, 64014

9 Floor 2 - Living Room



Max Dimensions: 18'3" x 12'2"
Calculated Area: 235 sq. ft
Included: Yes

Heated: Yes
Finished: Yes
Enclosed: Yes
Contiguous: Yes
Permitted: Yes
Wet space: No
Addition: No
Conversion: No

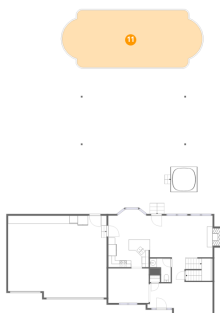
10 Floor 2 - Office



Max Dimensions: 11'4" x 9'9"
Calculated Area: 110 sq. ft
Included: Yes

Heated: Yes
Finished: Yes
Enclosed: Yes
Contiguous: Yes
Permitted: Yes
Wet space: No
Addition: No
Conversion: No

11 Floor 2 - Swimming Pool



Max Dimensions: 40'11" x 16'8"
Calculated Area: 612 sq. ft
Included: No

Heated: No
Finished: No
Enclosed: No
Contiguous: Yes
Permitted: No
Wet space: No
Addition: No
Conversion: No

1406 Northeast Hunters Court, Blue Springs, Jackson County,
Missouri, United States, 64014

12 Floor 2 - Breakfast Nook



Max Dimensions: 12'2" x 8'4"
Calculated Area: 90 sq. ft
Included: Yes

Heated: Yes
Finished: Yes
Enclosed: Yes
Contiguous: Yes
Permitted: Yes
Wet space: No
Addition: No
Conversion: No

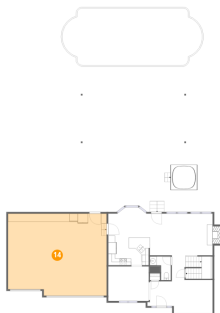
13 Floor 2 - Hall



Max Dimensions: 4'0" x 7'2"
Calculated Area: 79 sq. ft
Included: Yes

Heated: Yes
Finished: Yes
Enclosed: Yes
Contiguous: Yes
Permitted: Yes
Wet space: No
Addition: No
Conversion: No

14 Floor 2 - Garage

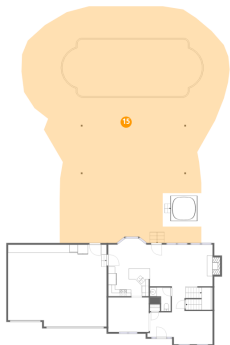


Max Dimensions: 28'10" x 24'0"
Calculated Area: 672 sq. ft
Included: No

Heated: No
Finished: No
Enclosed: Yes
Contiguous: Yes
Permitted: Yes
Wet space: No
Addition: No
Conversion: No

1406 Northeast Hunters Court, Blue Springs, Jackson County,
Missouri, United States, 64014

15 Floor 2 - Patio



Max Dimensions: 60'10" x 69'3"
Calculated Area: 3188 sq. ft
Included: No

Heated: No
Finished: No
Enclosed: No
Contiguous: Yes
Permitted: Yes
Wet space: No
Addition: No
Conversion: No

16 Floor 2 - Dining Room



Max Dimensions: 11'10" x 10'1"
Calculated Area: 120 sq. ft
Included: Yes

Heated: Yes
Finished: Yes
Enclosed: Yes
Contiguous: Yes
Permitted: Yes
Wet space: No
Addition: No
Conversion: No

17 Floor 2 - Foyer

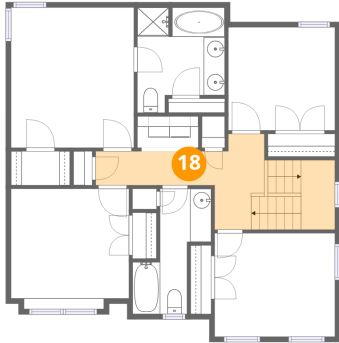


Max Dimensions: 7'9" x 7'7"
Calculated Area: 52 sq. ft
Included: Yes

Heated: Yes
Finished: Yes
Enclosed: Yes
Contiguous: Yes
Permitted: Yes
Wet space: No
Addition: No
Conversion: No

1406 Northeast Hunters Court, Blue Springs, Jackson County,
Missouri, United States, 64014

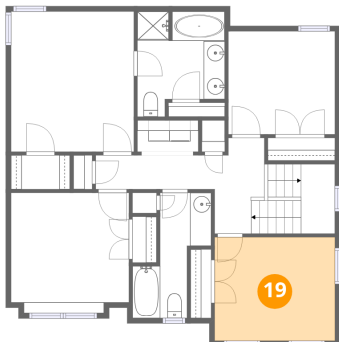
18 Floor 3 - Hall



Max Dimensions: 15'11" x 9'0"
Calculated Area: 119 sq. ft
Included: Yes

Heated: Yes
Finished: Yes
Enclosed: Yes
Contiguous: Yes
Permitted: Yes
Wet space: No
Addition: No
Conversion: No

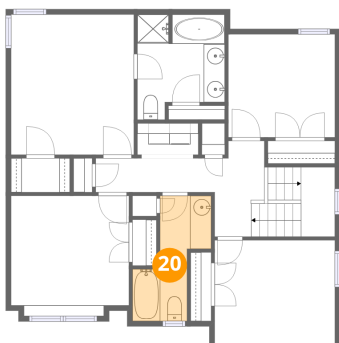
19 Floor 3 - Bedroom



Max Dimensions: 11'4" x 9'9"
Calculated Area: 110 sq. ft
Included: Yes

Heated: Yes
Finished: Yes
Enclosed: Yes
Contiguous: Yes
Permitted: Yes
Wet space: No
Addition: No
Conversion: No

20 Floor 3 - Bath

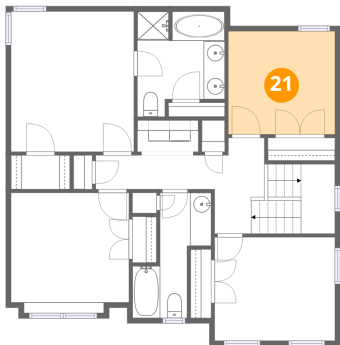


Max Dimensions: 5'1" x 11'10"
Calculated Area: 54 sq. ft
Included: Yes

Heated: Yes
Finished: Yes
Enclosed: Yes
Contiguous: Yes
Permitted: Yes
Wet space: Yes
Addition: No
Conversion: No

1406 Northeast Hunters Court, Blue Springs, Jackson County,
Missouri, United States, 64014

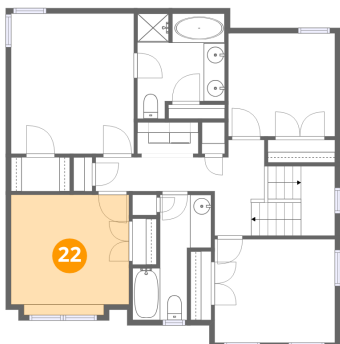
21 Floor 3 - Bedroom



Max Dimensions: 10'1" x 9'8"
Calculated Area: 98 sq. ft
Included: Yes

Heated: Yes
Finished: Yes
Enclosed: Yes
Contiguous: Yes
Permitted: Yes
Wet space: No
Addition: No
Conversion: No

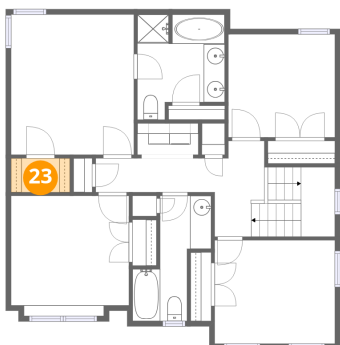
22 Floor 3 - Bedroom



Max Dimensions: 11'1" x 11'4"
Calculated Area: 122 sq. ft
Included: Yes

Heated: Yes
Finished: Yes
Enclosed: Yes
Contiguous: Yes
Permitted: Yes
Wet space: No
Addition: No
Conversion: No

23 Floor 3 - W.I.C.

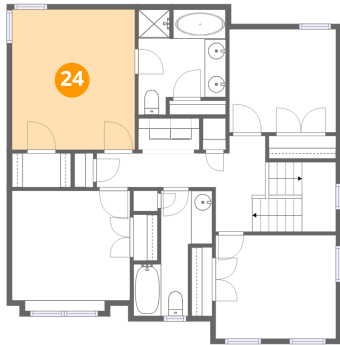


Max Dimensions: 5'7" x 3'2"
Calculated Area: 18 sq. ft
Included: Yes

Heated: Yes
Finished: Yes
Enclosed: Yes
Contiguous: Yes
Permitted: Yes
Wet space: No
Addition: No
Conversion: No

1406 Northeast Hunters Court, Blue Springs, Jackson County,
Missouri, United States, 64014

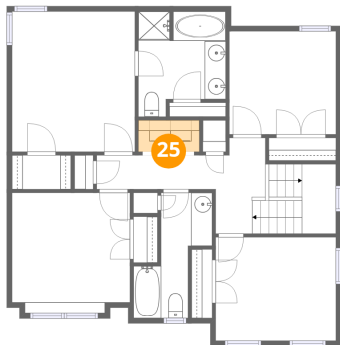
24 Floor 3 - Primary Bedroom



Max Dimensions: 11'7" x 13'2"
Calculated Area: 153 sq. ft
Included: Yes

Heated: Yes
Finished: Yes
Enclosed: Yes
Contiguous: Yes
Permitted: Yes
Wet space: No
Addition: No
Conversion: No

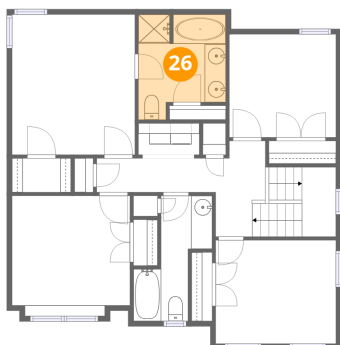
25 Floor 3 - Laundry



Max Dimensions: 5'9" x 3'0"
Calculated Area: 17 sq. ft
Included: Yes

Heated: Yes
Finished: Yes
Enclosed: Yes
Contiguous: Yes
Permitted: Yes
Wet space: No
Addition: No
Conversion: No

26 Floor 3 - Primary Bath



Max Dimensions: 8'3" x 9'11"
Calculated Area: 71 sq. ft
Included: Yes

Heated: Yes
Finished: Yes
Enclosed: Yes
Contiguous: Yes
Permitted: Yes
Wet space: Yes
Addition: No
Conversion: No