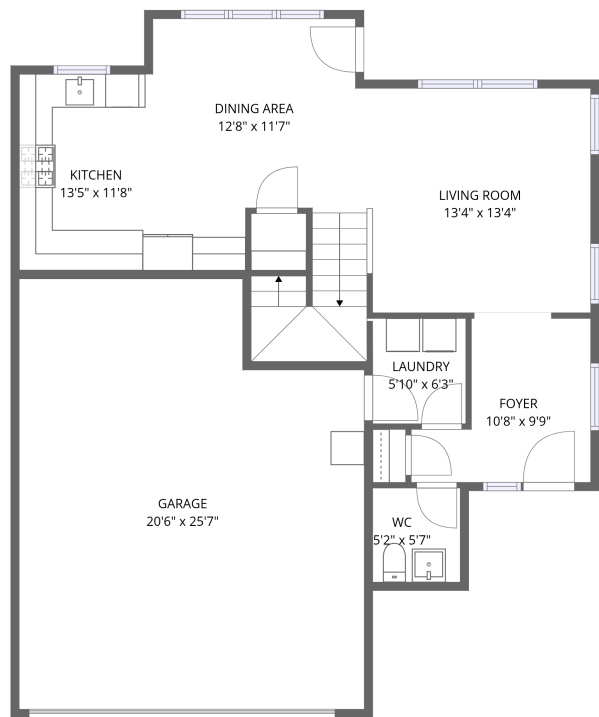
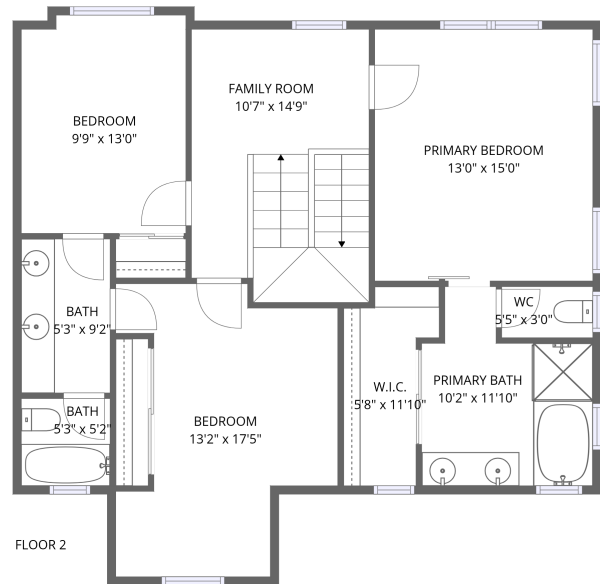


Home report

11619 Cardelina Lane, Atascadero, San Luis Obispo County,
California, United States, 93422



FLOOR 1



FLOOR 2


Total Area: 1635 sq. ft

Floor 1: 657 sq. ft, Floor 2: 978 sq. ft

Excluded: Garage 485 sq. ft, Walls: 164 sq. ft

Property summary

 **2** Floors

 **3** Bedrooms

 **2** Bathrooms

Home report

**11619 Cardelina Lane, Atascadero, San Luis Obispo County,
California, United States, 93422**



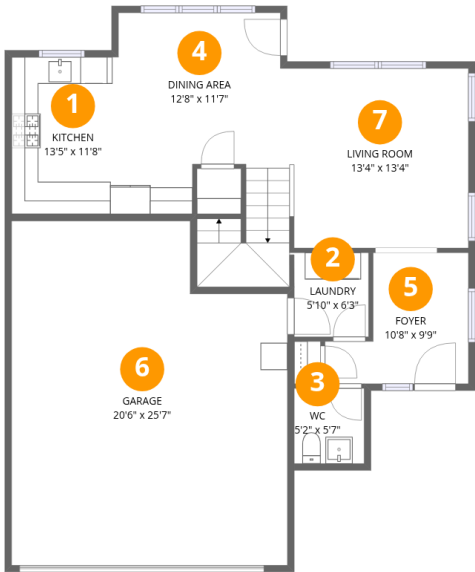
1
Half baths



1
Garages

Home report

11619 Cardelina Lane, Atascadero, San Luis Obispo County,
California, United States, 93422



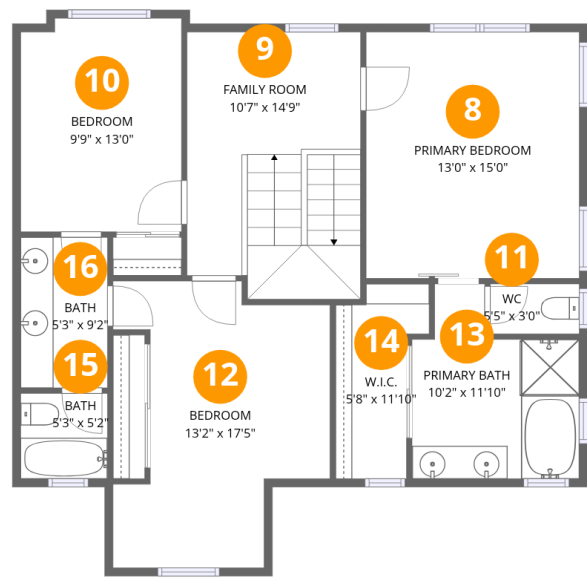
Room dimensions

Floor 1 Total:657sqft Excluded: 485sqft

#		Max Dimensions	sqft	Included
1	Kitchen	13'5" x 11'8"	113 sq. ft	Yes
2	Laundry	5'10" x 6'3"	35 sq. ft	Yes
3	WC	5'2" x 5'7"	29 sq. ft	Yes
4	Dining Area	12'8" x 11'7"	188 sq. ft	Yes
5	Foyer	10'8" x 9'9"	80 sq. ft	Yes
6	Garage	20'6" x 25'7"	485 sq. ft	No
7	Living Room	13'4" x 13'4"	177 sq. ft	Yes

Home report

11619 Cardelina Lane, Atascadero, San Luis Obispo County,
California, United States, 93422



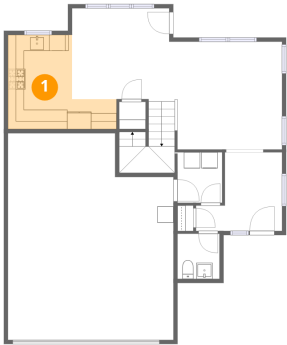
Room dimensions

Floor 2 Total:978sqft Excluded: 0sqft

#		Max Dimensions	sqft	Included
8	Primary Bedroom	13'0" x 15'0"	194 sq. ft	Yes
9	Family Room	10'7" x 14'9"	166 sq. ft	Yes
10	Bedroom	9'9" x 13'0"	125 sq. ft	Yes
11	WC	5'5" x 3'0"	16 sq. ft	Yes
12	Bedroom	13'2" x 17'5"	179 sq. ft	Yes
13	Primary Bath	10'2" x 11'10"	96 sq. ft	Yes
14	W.I.C.	5'8" x 11'10"	53 sq. ft	Yes
15	Bath	5'3" x 5'2"	27 sq. ft	Yes
16	Bath	5'3" x 9'2"	48 sq. ft	Yes

11619 Cardelina Lane, Atascadero, San Luis Obispo County,
California, United States, 93422

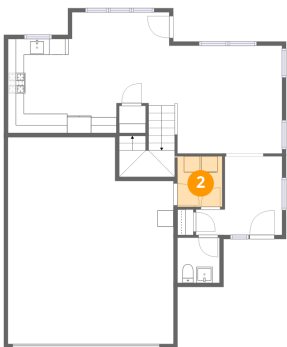
1 Floor 1 - Kitchen



Max Dimensions: 13'5" x 11'8"
Calculated Area: 113 sq. ft
Included: Yes

Heated: Yes
Finished: Yes
Enclosed: Yes
Contiguous: Yes
Permitted: Yes
Wet space: No
Addition: No
Conversion: No

2 Floor 1 - Laundry

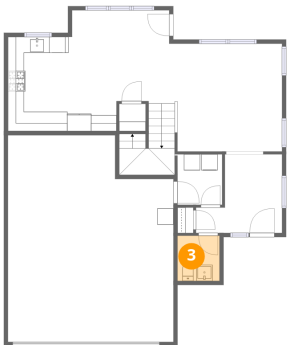


Max Dimensions: 5'10" x 6'3"
Calculated Area: 35 sq. ft
Included: Yes

Heated: Yes
Finished: Yes
Enclosed: Yes
Contiguous: Yes
Permitted: Yes
Wet space: No
Addition: No
Conversion: No

11619 Cardelina Lane, Atascadero, San Luis Obispo County,
California, United States, 93422

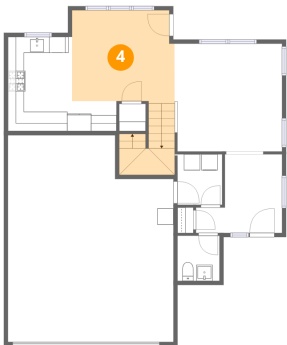
3 Floor 1 - WC



Max Dimensions: 5'2" x 5'7"
Calculated Area: 29 sq. ft
Included: Yes

Heated: Yes
Finished: Yes
Enclosed: Yes
Contiguous: Yes
Permitted: Yes
Wet space: Yes
Addition: No
Conversion: No

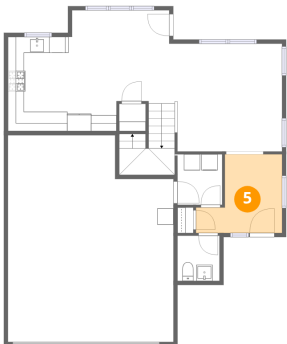
4 Floor 1 - Dining Area



Max Dimensions: 12'8" x 11'7"
Calculated Area: 188 sq. ft
Included: Yes

Heated: Yes
Finished: Yes
Enclosed: Yes
Contiguous: Yes
Permitted: Yes
Wet space: No
Addition: No
Conversion: No

5 Floor 1 - Foyer

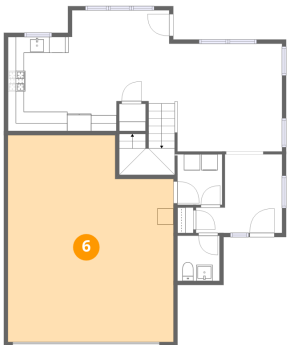


Max Dimensions: 10'8" x 9'9"
Calculated Area: 80 sq. ft
Included: Yes

Heated: Yes
Finished: Yes
Enclosed: Yes
Contiguous: Yes
Permitted: Yes
Wet space: No
Addition: No
Conversion: No

11619 Cardelina Lane, Atascadero, San Luis Obispo County,
California, United States, 93422

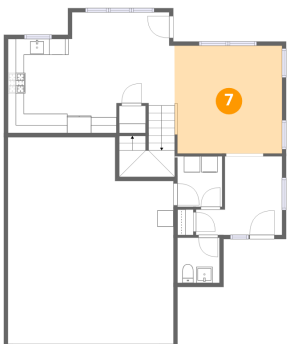
6 Floor 1 - Garage



Max Dimensions: 20'6" x 25'7"
Calculated Area: 485 sq. ft
Included: No

Heated: No
Finished: No
Enclosed: Yes
Contiguous: Yes
Permitted: Yes
Wet space: No
Addition: No
Conversion: No

7 Floor 1 - Living Room



Max Dimensions: 13'4" x 13'4"
Calculated Area: 177 sq. ft
Included: Yes

Heated: Yes
Finished: Yes
Enclosed: Yes
Contiguous: Yes
Permitted: Yes
Wet space: No
Addition: No
Conversion: No

8 Floor 2 - Primary Bedroom



Max Dimensions: 13'0" x 15'0"
Calculated Area: 194 sq. ft
Included: Yes

Heated: Yes
Finished: Yes
Enclosed: Yes
Contiguous: Yes
Permitted: Yes
Wet space: No
Addition: No
Conversion: No

11619 Cardelina Lane, Atascadero, San Luis Obispo County,
California, United States, 93422

9 Floor 2 - Family Room



Max Dimensions: 10'7" x 14'9"
Calculated Area: 166 sq. ft
Included: Yes

Heated: Yes
Finished: Yes
Enclosed: Yes
Contiguous: Yes
Permitted: Yes
Wet space: No
Addition: No
Conversion: No

10 Floor 2 - Bedroom



Max Dimensions: 9'9" x 13'0"
Calculated Area: 125 sq. ft
Included: Yes

Heated: Yes
Finished: Yes
Enclosed: Yes
Contiguous: Yes
Permitted: Yes
Wet space: No
Addition: No
Conversion: No

11 Floor 2 - WC



Max Dimensions: 5'5" x 3'0"
Calculated Area: 16 sq. ft
Included: Yes

Heated: Yes
Finished: Yes
Enclosed: Yes
Contiguous: Yes
Permitted: Yes
Wet space: Yes
Addition: No
Conversion: No

Home report

11619 Cardelina Lane, Atascadero, San Luis Obispo County,
California, United States, 93422

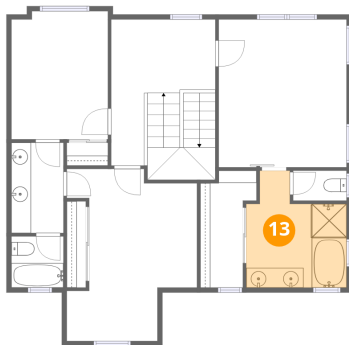
12 Floor 2 - Bedroom



Max Dimensions: 13'2" x 17'5"
Calculated Area: 179 sq. ft
Included: Yes

Heated: Yes
Finished: Yes
Enclosed: Yes
Contiguous: Yes
Permitted: Yes
Wet space: No
Addition: No
Conversion: No

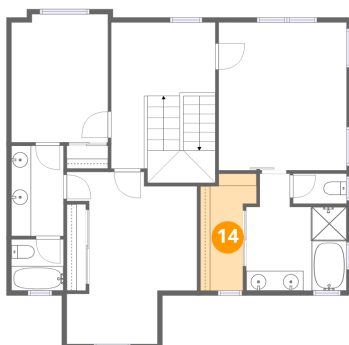
13 Floor 2 - Primary Bath



Max Dimensions: 10'2" x 11'10"
Calculated Area: 96 sq. ft
Included: Yes

Heated: Yes
Finished: Yes
Enclosed: Yes
Contiguous: Yes
Permitted: Yes
Wet space: Yes
Addition: No
Conversion: No

14 Floor 2 - W.I.C.



Max Dimensions: 5'8" x 11'10"
Calculated Area: 53 sq. ft
Included: Yes

Heated: Yes
Finished: Yes
Enclosed: Yes
Contiguous: Yes
Permitted: Yes
Wet space: No
Addition: No
Conversion: No

11619 Cardelina Lane, Atascadero, San Luis Obispo County,
California, United States, 93422

15 Floor 2 - Bath



Max Dimensions: 5'3" x 5'2"
Calculated Area: 27 sq. ft
Included: Yes

Heated: Yes
Finished: Yes
Enclosed: Yes
Contiguous: Yes
Permitted: Yes
Wet space: Yes
Addition: No
Conversion: No

16 Floor 2 - Bath



Max Dimensions: 5'3" x 9'2"
Calculated Area: 48 sq. ft
Included: Yes

Heated: Yes
Finished: Yes
Enclosed: Yes
Contiguous: Yes
Permitted: Yes
Wet space: Yes
Addition: No
Conversion: No