

# Home data report

## 20726 Morning Star Rd, Lead, SD, US



**Total Area: 3446 sq. ft**

Basement: 1589 sq. ft, 1st Floor: 1857 sq. ft

Excluded: Utility 236 sq. ft, Garage 1060 sq. ft, Walls: 268 sq. ft

### Property summary





## Room dimensions

Floor 1 Below grade

Total:1589sqft

Excluded: 236sqft

#		Dimensions	sqft	Counted as living area
1	Recreation Room	53'4" x 23'5"	1148 sq. ft	Yes
2	Bath	8'6" x 5'1"	43 sq. ft	Yes
3	Bedroom	11'9" x 12'0"	146 sq. ft	Yes
4	Hall	3'3" x 9'11"	33 sq. ft	Yes
5	Bedroom	11'8" x 12'1"	146 sq. ft	Yes
6	Utility	22'5" x 10'6"	236 sq. ft	No

# Home data report

## 20726 Morning Star Rd,Lead,SD,US



### Room dimensions

Floor 2

Total:1857sqft

Excluded: 1060sqft

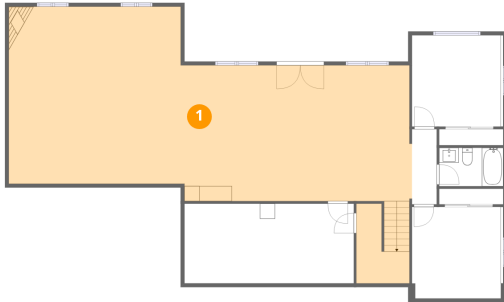
#		Dimensions	sqft	Counted as living area
7	W.I.C.	9'8" x 9'0"	85 sq. ft	Yes
8	Hall	4'2" x 6'6"	26 sq. ft	Yes
9	Hall	3'3" x 10'0"	33 sq. ft	Yes
10	Primary Bedroom	14'11" x 14'4"	215 sq. ft	Yes
11	Living Room	15'10" x 13'9"	214 sq. ft	Yes
12	Foyer	15'10" x 15'0"	222 sq. ft	Yes
13	Bath	7'5" x 14'5"	106 sq. ft	Yes
14	Pantry	6'2" x 6'6"	35 sq. ft	Yes
15	Kitchen	14'3" x 15'0"	213 sq. ft	Yes
16	Bath	8'6" x 4'10"	41 sq. ft	Yes
17	Laundry	8'9" x 8'8"	76 sq. ft	Yes

Home data report

**20726 Morning Star Rd,Lead,SD,US**

#		Dimensions	sqft	Counted as living area
18	Bedroom	12'1" x 12'0"	145 sq. ft	Yes
19	Dining Area	14'3" x 13'9"	196 sq. ft	Yes
20	Garage	35'10" x 35'3"	1060 sq. ft	No
21	Bedroom	12'1" x 12'0"	146 sq. ft	Yes

## 1 Floor 1 - Recreation Room



Dimensions: 53'4" x 23'5"  
Area: 1148 sq. ft  
Counted as living area: Yes

Heated: Yes  
Finished: Yes  
Enclosed: Yes  
Contiguous: Yes  
Permitted: Yes  
Wet space: No  
Addition: No  
Conversion: No

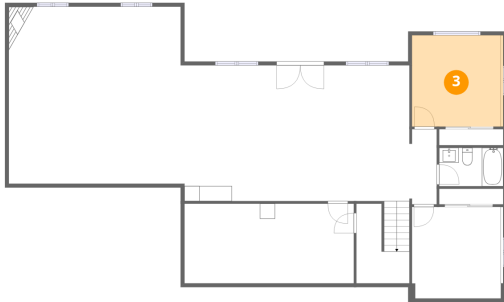
## 2 Floor 1 - Bath



Dimensions: 8'6" x 5'1"  
Area: 43 sq. ft  
Counted as living area: Yes

Heated: Yes  
Finished: Yes  
Enclosed: Yes  
Contiguous: Yes  
Permitted: Yes  
Wet space: Yes  
Addition: No  
Conversion: No

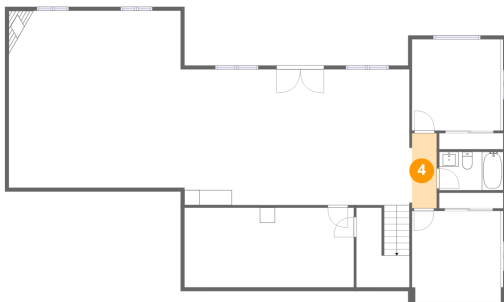
### 3 Floor 1 - Bedroom



Dimensions: 11'9" x 12'0"  
Area: 146 sq. ft  
Counted as living area: Yes

Heated: Yes  
Finished: Yes  
Enclosed: Yes  
Contiguous: Yes  
Permitted: Yes  
Wet space: No  
Addition: No  
Conversion: No

### 4 Floor 1 - Hall



Dimensions: 3'3" x 9'11"  
Area: 33 sq. ft  
Counted as living area: Yes

Heated: Yes  
Finished: Yes  
Enclosed: Yes  
Contiguous: Yes  
Permitted: Yes  
Wet space: No  
Addition: No  
Conversion: No

### 5 Floor 1 - Bedroom



Dimensions: 11'8" x 12'1"  
Area: 146 sq. ft  
Counted as living area: Yes

Heated: Yes  
Finished: Yes  
Enclosed: Yes  
Contiguous: Yes  
Permitted: Yes  
Wet space: No  
Addition: No  
Conversion: No

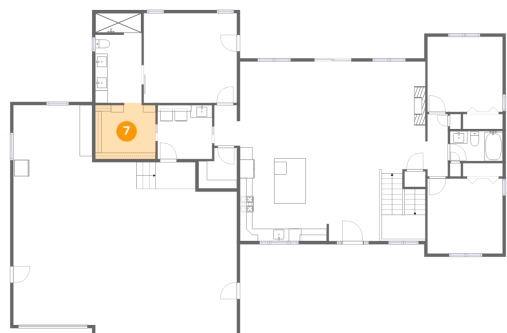
### 6 Floor 1 - Utility



Dimensions: 22'5" x 10'6"  
Area: 236 sq. ft  
Counted as living area: No

Heated: Yes  
Finished: No  
Enclosed: Yes  
Contiguous: Yes  
Permitted: Yes  
Wet space: No  
Addition: No  
Conversion: No

### 7 Floor 2 - W.I.C.



Dimensions: 9'8" x 9'0"  
Area: 85 sq. ft  
Counted as living area: Yes

Heated: Yes  
Finished: Yes  
Enclosed: Yes  
Contiguous: Yes  
Permitted: Yes  
Wet space: No  
Addition: No  
Conversion: No

### 8 Floor 2 - Hall



Dimensions: 4'2" x 6'6"  
Area: 26 sq. ft  
Counted as living area: Yes

Heated: Yes  
Finished: Yes  
Enclosed: Yes  
Contiguous: Yes  
Permitted: Yes  
Wet space: No  
Addition: No  
Conversion: No

### 9 Floor 2 - Hall



Dimensions: 3'3" x 10'0"  
Area: 33 sq. ft  
Counted as living area: Yes

Heated: Yes  
Finished: Yes  
Enclosed: Yes  
Contiguous: Yes  
Permitted: Yes  
Wet space: No  
Addition: No  
Conversion: No

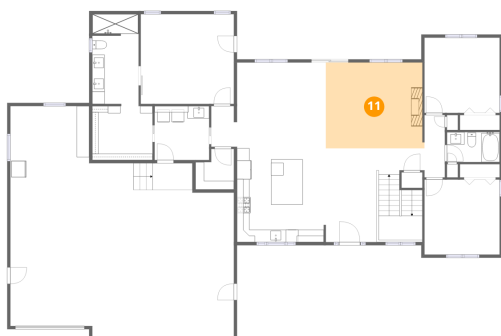
### 10 Floor 2 - Primary Bedroom



Dimensions: 14'11" x 14'4"  
Area: 215 sq. ft  
Counted as living area: Yes

Heated: Yes  
Finished: Yes  
Enclosed: Yes  
Contiguous: Yes  
Permitted: Yes  
Wet space: No  
Addition: No  
Conversion: No

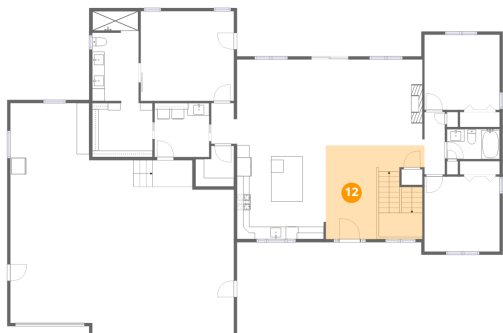
### 11 Floor 2 - Living Room



Dimensions: 15'10" x 13'9"  
Area: 214 sq. ft  
Counted as living area: Yes

Heated: Yes  
Finished: Yes  
Enclosed: Yes  
Contiguous: Yes  
Permitted: Yes  
Wet space: No  
Addition: No  
Conversion: No

## 12 Floor 2 - Foyer



Dimensions: 15'10" x 15'0"  
Area: 222 sq. ft  
Counted as living area: Yes

Heated: Yes  
Finished: Yes  
Enclosed: Yes  
Contiguous: Yes  
Permitted: Yes  
Wet space: No  
Addition: No  
Conversion: No

## 13 Floor 2 - Bath



Dimensions: 7'5" x 14'5"  
Area: 106 sq. ft  
Counted as living area: Yes

Heated: Yes  
Finished: Yes  
Enclosed: Yes  
Contiguous: Yes  
Permitted: Yes  
Wet space: Yes  
Addition: No  
Conversion: No

## 14 Floor 2 - Pantry



Dimensions: 6'2" x 6'6"  
Area: 35 sq. ft  
Counted as living area: Yes

Heated: Yes  
Finished: Yes  
Enclosed: Yes  
Contiguous: Yes  
Permitted: Yes  
Wet space: No  
Addition: No  
Conversion: No

**15** Floor 2 - Kitchen



Dimensions: 14'3" x 15'0"  
Area: 213 sq. ft  
Counted as living area: Yes

Heated: Yes  
Finished: Yes  
Enclosed: Yes  
Contiguous: Yes  
Permitted: Yes  
Wet space: No  
Addition: No  
Conversion: No

**16** Floor 2 - Bath



Dimensions: 8'6" x 4'10"  
Area: 41 sq. ft  
Counted as living area: Yes

Heated: Yes  
Finished: Yes  
Enclosed: Yes  
Contiguous: Yes  
Permitted: Yes  
Wet space: Yes  
Addition: No  
Conversion: No

**17** Floor 2 - Laundry



Dimensions: 8'9" x 8'8"  
Area: 76 sq. ft  
Counted as living area: Yes

Heated: Yes  
Finished: Yes  
Enclosed: Yes  
Contiguous: Yes  
Permitted: Yes  
Wet space: No  
Addition: No  
Conversion: No

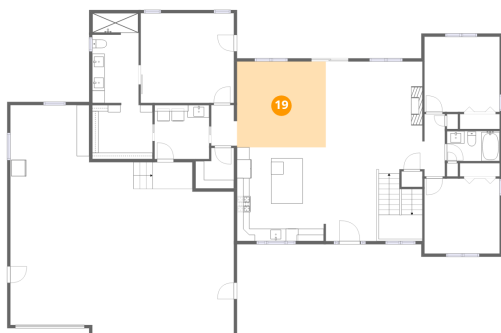
### 18 Floor 2 - Bedroom



Dimensions: 12'1" x 12'0"  
Area: 145 sq. ft  
Counted as living area: Yes

Heated: Yes  
Finished: Yes  
Enclosed: Yes  
Contiguous: Yes  
Permitted: Yes  
Wet space: No  
Addition: No  
Conversion: No

### 19 Floor 2 - Dining Area



Dimensions: 14'3" x 13'9"  
Area: 196 sq. ft  
Counted as living area: Yes

Heated: Yes  
Finished: Yes  
Enclosed: Yes  
Contiguous: Yes  
Permitted: Yes  
Wet space: No  
Addition: No  
Conversion: No

### 20 Floor 2 - Garage



Dimensions: 35'10" x 35'3"  
Area: 1060 sq. ft  
Counted as living area: No

Heated: No  
Finished: No  
Enclosed: Yes  
Contiguous: Yes  
Permitted: Yes  
Wet space: No  
Addition: No  
Conversion: No

**21** Floor 2 - Bedroom

---



**Dimensions:** 12'1" x 12'0"  
**Area:** 146 sq. ft  
**Counted as living area:** Yes

**Heated:** Yes  
**Finished:** Yes  
**Enclosed:** Yes  
**Contiguous:** Yes  
**Permitted:** Yes  
**Wet space:** No  
**Addition:** No  
**Conversion:** No