

Covered Patio
38'0" x 31'11"

Family Room
16'11" x 23'8"

Bath
7'6" x 8'1"

Primary Bedroom
17'2" x 17'9"

Hall
12'8" x 8'1"

Utility
7'2" x 5'11"

W.I.C.
5'1" x 5'11"

Laundry
12'1" x 10'4"

Waiting Room
12'1" x 2'10"

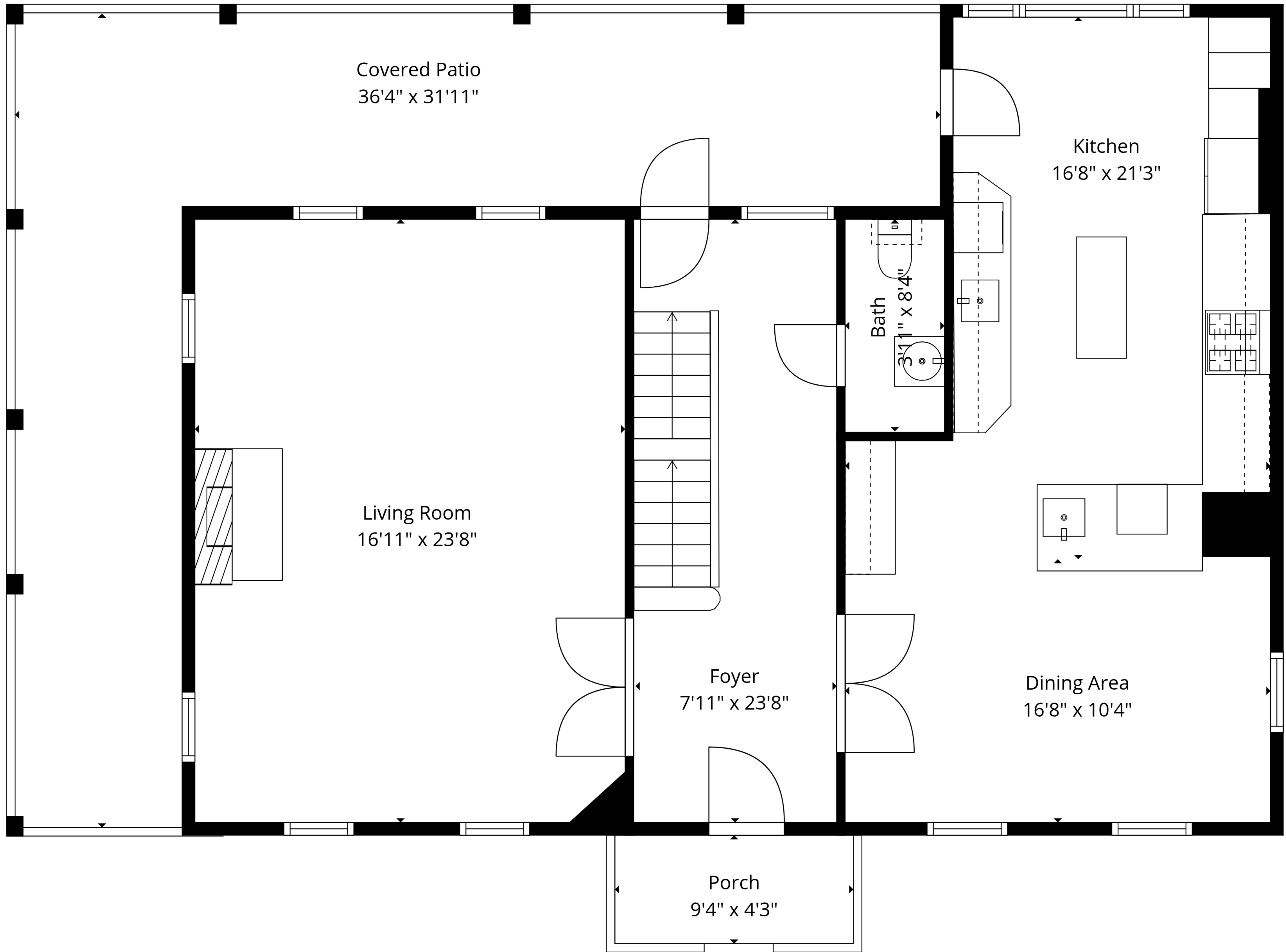
Patio
11'5" x 34'11"

Storage
7'11" x 7'3"

TOTAL: 3044 sq. ft

1st floor: 1056 sq. ft, 2nd floor: 1098 sq. ft, 3rd floor: 890 sq. ft
 EXCLUDED AREAS: STORAGE: 57 sq. ft, UTILITY: 42 sq. ft, COVERED PATIO: 926 sq. ft,
 PATIO: 386 sq. ft, PORCH: 40 sq. ft, LOW CEILING: 113 sq. ft,
 ATTIC: 95 sq. ft, WALLS: 243 sq. ft

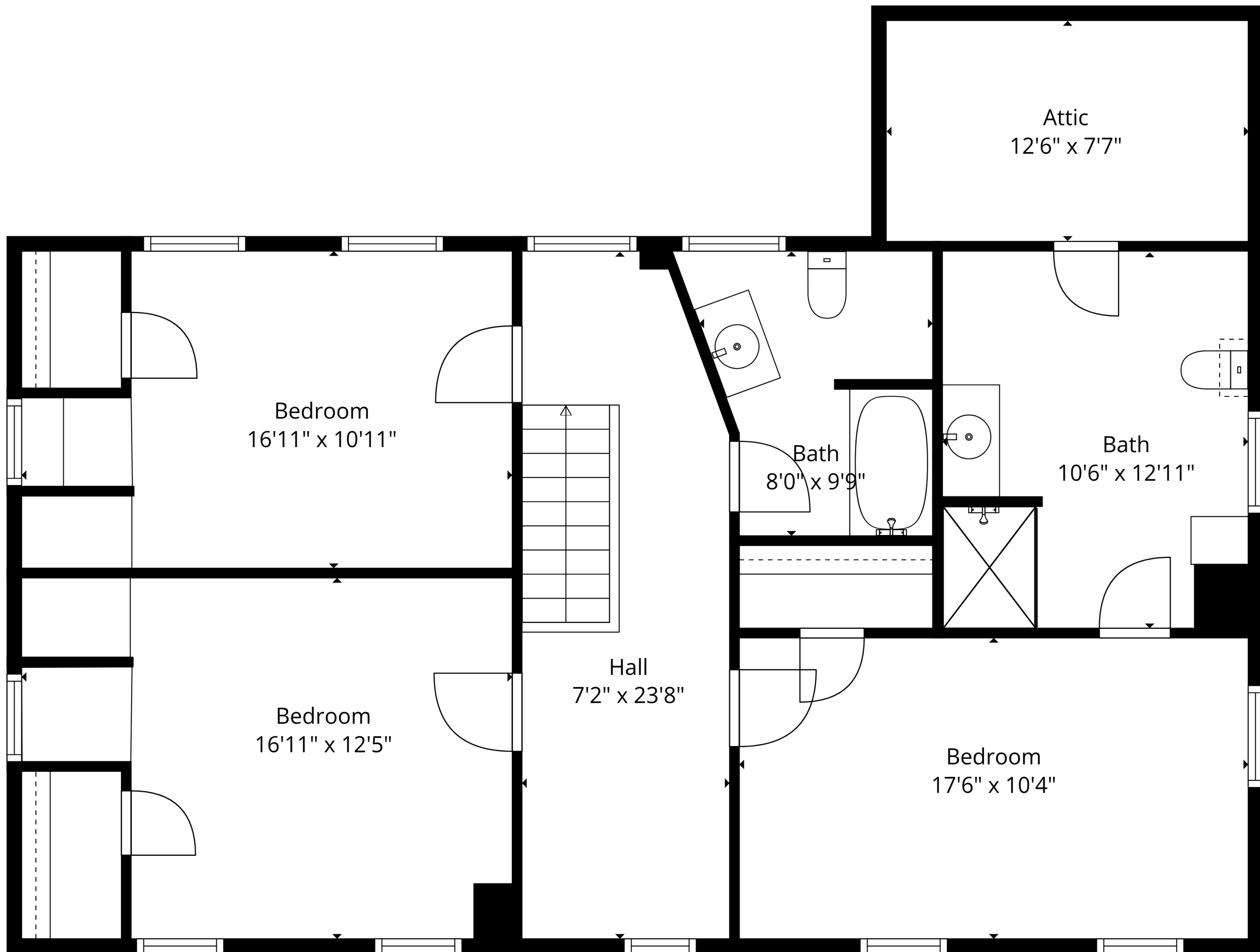




TOTAL: 3044 sq. ft

1st floor: 1056 sq. ft, 2nd floor: 1098 sq. ft, 3rd floor: 890 sq. ft
 EXCLUDED AREAS: STORAGE: 57 sq. ft, UTILITY: 42 sq. ft, COVERED PATIO: 926 sq. ft,
 PATIO: 386 sq. ft, PORCH: 40 sq. ft, LOW CEILING: 113 sq. ft,
 ATTIC: 95 sq. ft, WALLS: 243 sq. ft

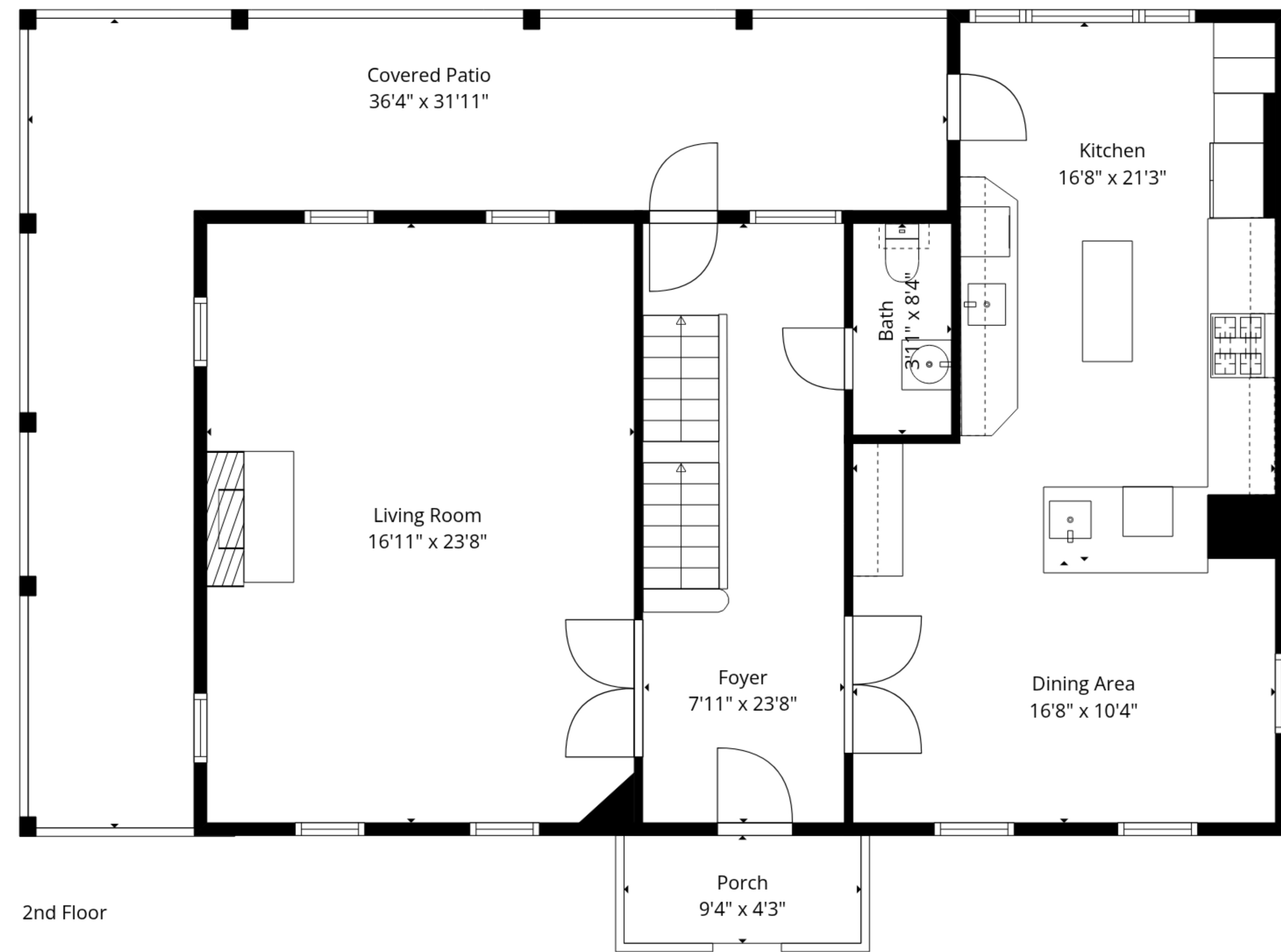




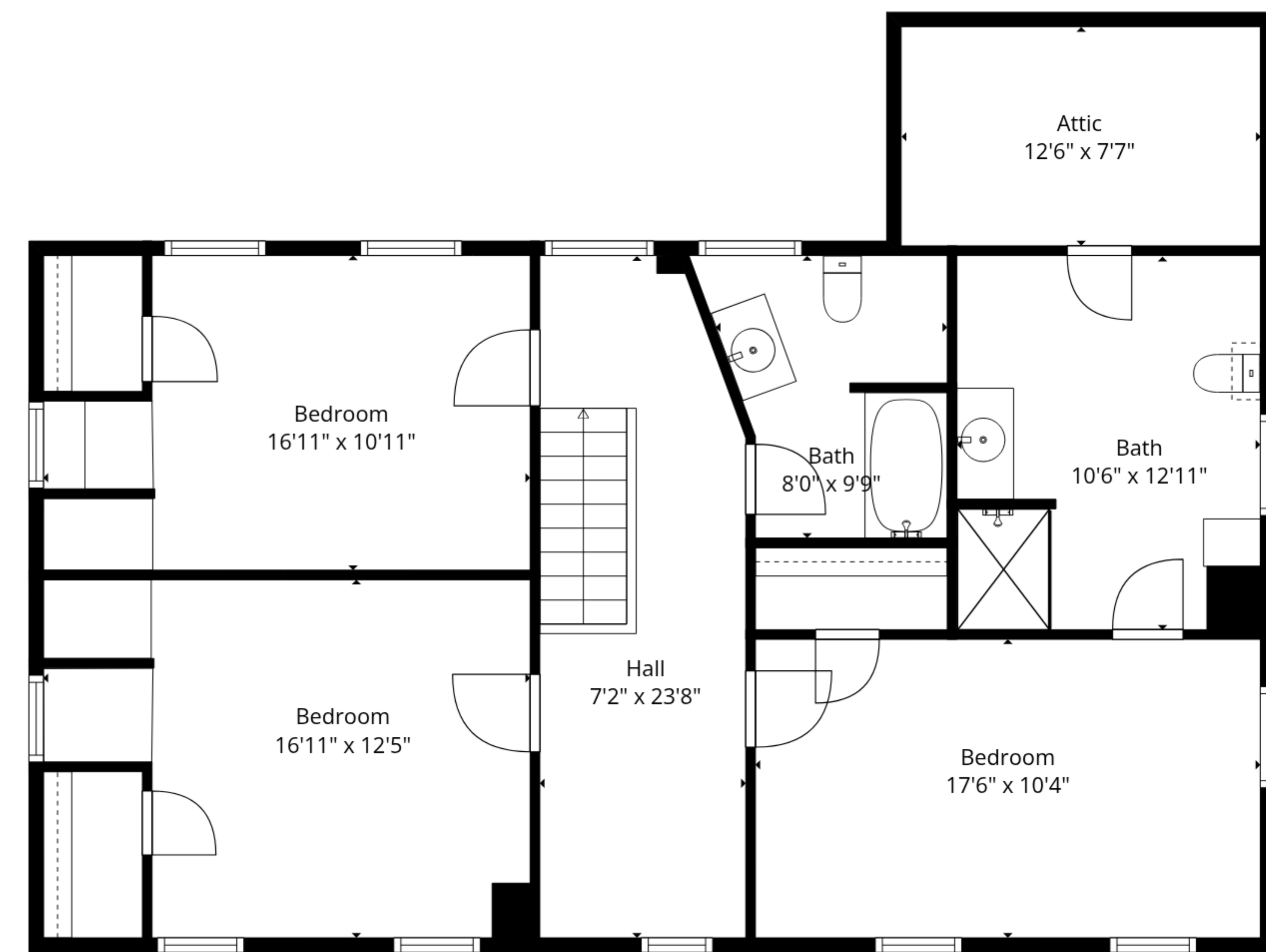
TOTAL: 3044 sq. ft

1st floor: 1056 sq. ft, 2nd floor: 1098 sq. ft, 3rd floor: 890 sq. ft
 EXCLUDED AREAS: STORAGE: 57 sq. ft, UTILITY: 42 sq. ft, COVERED PATIO: 926 sq. ft,
 PATIO: 386 sq. ft, PORCH: 40 sq. ft, LOW CEILING: 113 sq. ft,
 ATTIC: 95 sq. ft, WALLS: 243 sq. ft

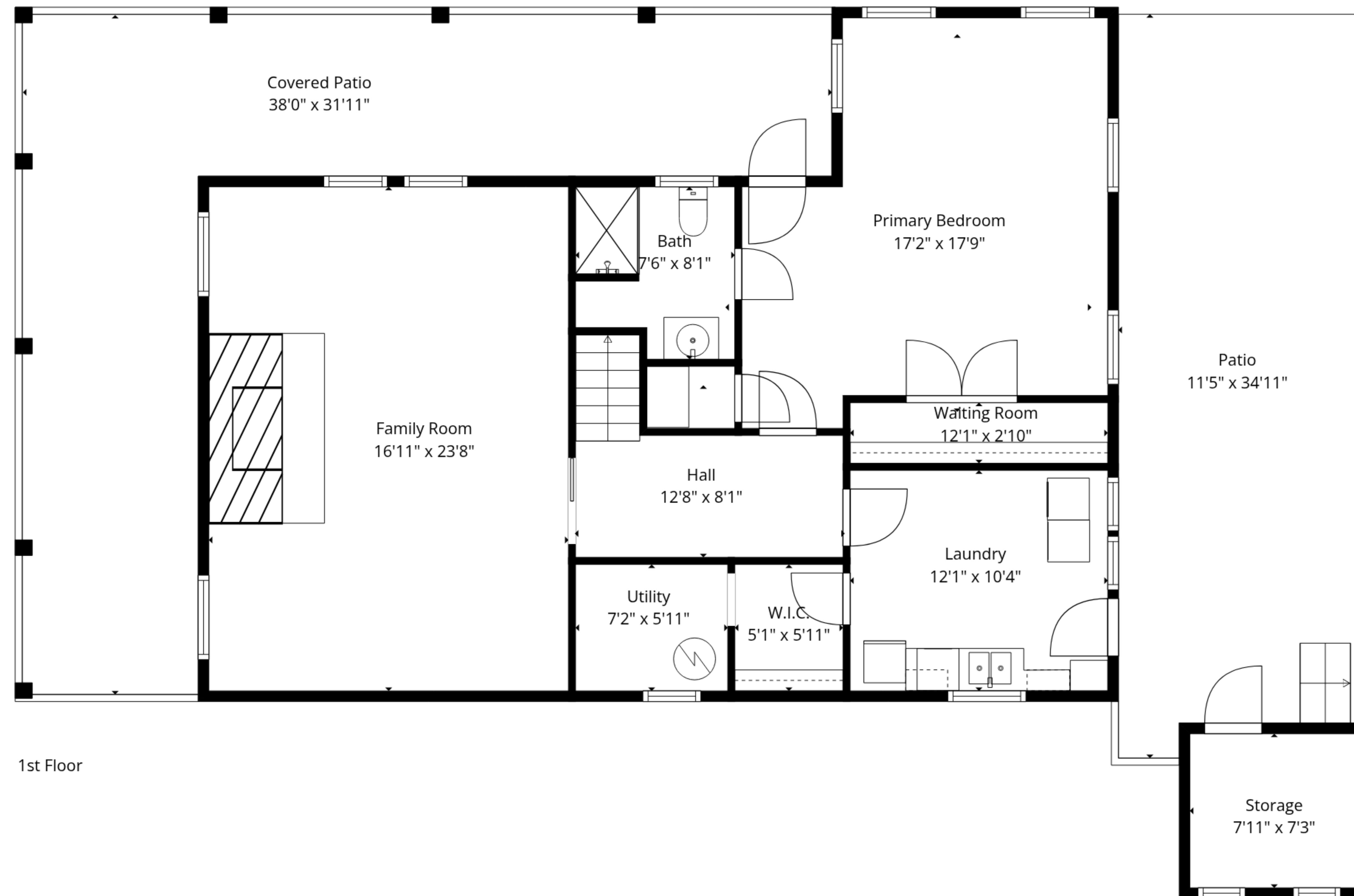




2nd Floor



3rd Floor



1st Floor

TOTAL: 3044 sq. ft

1st floor: 1056 sq. ft, 2nd floor: 1098 sq. ft, 3rd floor: 890 sq. ft

EXCLUDED AREAS: STORAGE: 57 sq. ft, UTILITY: 42 sq. ft, COVERED PATIO: 926 sq. ft,

PATIO: 386 sq. ft, PORCH: 40 sq. ft, LOW CEILING: 113 sq. ft,

ATTIC: 95 sq. ft, WALLS: 243 sq. ft

