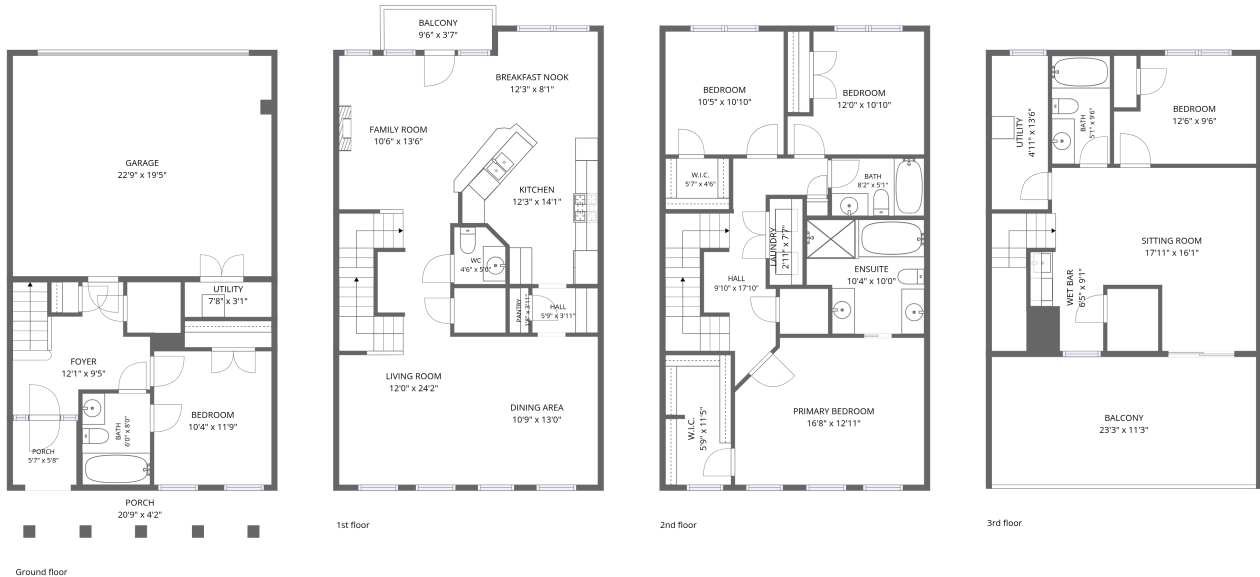


Home report

3818 Wild Goose Lane, Short Pump, Glen Allen, Henrico County, Virginia, United States, 23060



Total Area: 2658 sq. ft

Ground Floor: 340 sq. ft, 1st Floor: 876 sq. ft, 2nd Floor: 906 sq. ft, 3rd Floor: 536 sq. ft
Excluded: Porch 118 sq. ft, Utility 90 sq. ft, Garage 440 sq. ft, Balcony 295 sq. ft, Walls: 191 sq. ft

Property summary

4 Floors

5 Bedrooms

4 Bathrooms

Home report

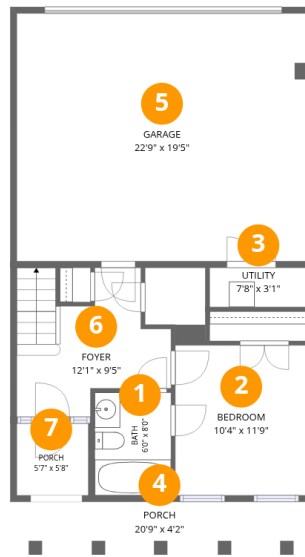
**3818 Wild Goose Lane, Short Pump, Glen Allen, Henrico County,
Virginia, United States, 23060**

 **1**
Half baths

 **1**
Garages

Home report

3818 Wild Goose Lane, Short Pump, Glen Allen, Henrico County, Virginia, United States, 23060



Room dimensions

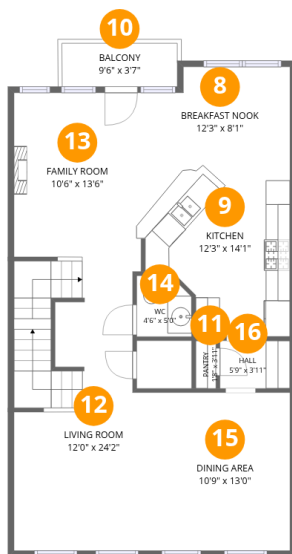
Floor 1

Total:340sqft Excluded: 581sqft

#		Dimensions	sqft	Counted as living area
1	Bath	6'0" x 8'0"	48 sq. ft	Yes
2	Bedroom	10'4" x 11'9"	121 sq. ft	Yes
3	Utility	7'8" x 3'1"	23 sq. ft	No
4	Porch	20'9" x 4'2"	86 sq. ft	No
5	Garage	22'9" x 19'5"	440 sq. ft	No
6	Foyer	12'1" x 9'5"	106 sq. ft	Yes
7	Porch	5'7" x 5'8"	32 sq. ft	No

Home report

3818 Wild Goose Lane, Short Pump, Glen Allen, Henrico County, Virginia, United States, 23060



Room dimensions

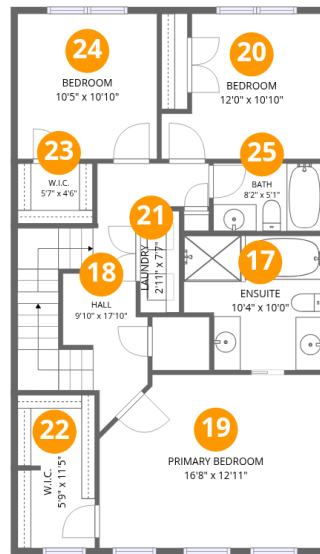
Floor 2

Total:876sqft Excluded: 34sqft

#		Dimensions	sqft	Counted as living area
8	Breakfast Nook	12'3" x 8'1"	92 sq. ft	Yes
9	Kitchen	12'3" x 14'1"	150 sq. ft	Yes
10	Balcony	9'6" x 3'7"	34 sq. ft	No
11	Pantry	1'8" x 3'11"	7 sq. ft	Yes
12	Living Room	12'0" x 24'2"	264 sq. ft	Yes
13	Family Room	10'6" x 13'6"	141 sq. ft	Yes
14	WC	4'6" x 5'0"	21 sq. ft	Yes
15	Dining Area	10'9" x 13'0"	140 sq. ft	Yes
16	Hall	5'9" x 3'11"	23 sq. ft	Yes

Home report

3818 Wild Goose Lane, Short Pump, Glen Allen, Henrico County, Virginia, United States, 23060



Room dimensions

Floor 3

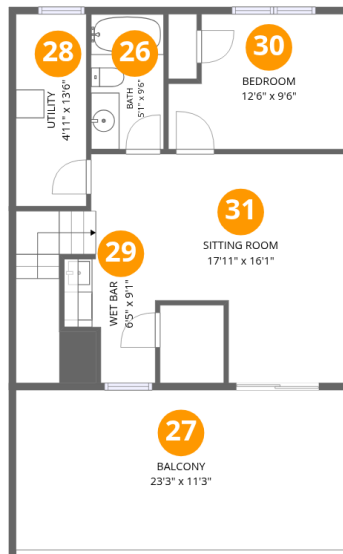
Total:906sqft

Excluded: 0sqft

#		Dimensions	sqft	Counted as living area
17	Ensuite	10'4" x 10'0"	94 sq. ft	Yes
18	Hall	9'10" x 17'10"	148 sq. ft	Yes
19	Primary Bedroom	16'8" x 12'11"	204 sq. ft	Yes
20	Bedroom	12'0" x 10'10"	113 sq. ft	Yes
21	Laundry	2'11" x 7'7"	22 sq. ft	Yes
22	W.I.C.	5'9" x 11'5"	65 sq. ft	Yes
23	W.I.C.	5'7" x 4'6"	25 sq. ft	Yes
24	Bedroom	10'5" x 10'10"	112 sq. ft	Yes
25	Bath	8'2" x 5'1"	41 sq. ft	Yes

Home report

3818 Wild Goose Lane, Short Pump, Glen Allen, Henrico County, Virginia, United States, 23060



Room dimensions

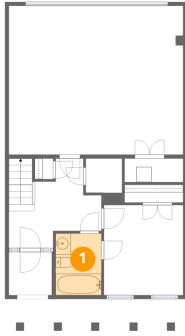
Floor 4

Total:536sqft Excluded: 328sqft

#		Dimensions	sqft	Counted as living area
26	Bath	5'1" x 9'6"	49 sq. ft	Yes
27	Balcony	23'3" x 11'3"	261 sq. ft	No
28	Utility	4'11" x 13'6"	67 sq. ft	No
29	Wet Bar	6'5" x 9'1"	47 sq. ft	Yes
30	Bedroom	12'6" x 9'6"	107 sq. ft	Yes
31	Sitting Room	17'11" x 16'1"	271 sq. ft	Yes

3818 Wild Goose Lane, Short Pump, Glen Allen, Henrico County, Virginia, United States, 23060

1 Floor 1 - Bath



Dimensions: 6'0" x 8'0"
Area: 48 sq. ft
Counted as living area: Yes

Heated: Yes
Finished: Yes
Enclosed: Yes
Contiguous: Yes
Permitted: Yes
Wet space: Yes
Addition: No
Conversion: No

2 Floor 1 - Bedroom

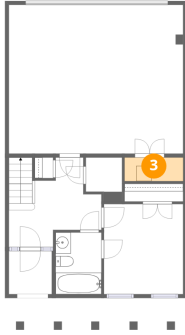


Dimensions: 10'4" x 11'9"
Area: 121 sq. ft
Counted as living area: Yes

Heated: Yes
Finished: Yes
Enclosed: Yes
Contiguous: Yes
Permitted: Yes
Wet space: No
Addition: No
Conversion: No

3818 Wild Goose Lane, Short Pump, Glen Allen, Henrico County, Virginia, United States, 23060

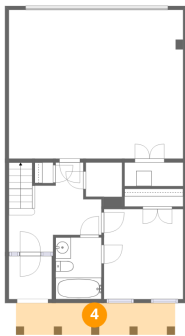
3 Floor 1 - Utility



Dimensions: 7'8" x 3'1"
Area: 23 sq. ft
Counted as living area: No

Heated: Yes
Finished: No
Enclosed: Yes
Contiguous: Yes
Permitted: Yes
Wet space: No
Addition: No
Conversion: No

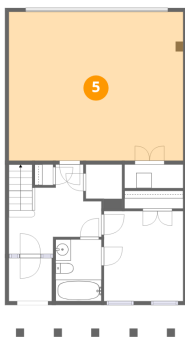
4 Floor 1 - Porch



Dimensions: 20'9" x 4'2"
Area: 86 sq. ft
Counted as living area: No

Heated: No
Finished: No
Enclosed: No
Contiguous: Yes
Permitted: Yes
Wet space: No
Addition: No
Conversion: No

5 Floor 1 - Garage

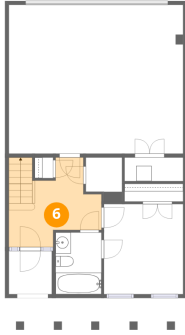


Dimensions: 22'9" x 19'5"
Area: 440 sq. ft
Counted as living area: No

Heated: No
Finished: No
Enclosed: Yes
Contiguous: Yes
Permitted: Yes
Wet space: No
Addition: No
Conversion: No

3818 Wild Goose Lane, Short Pump, Glen Allen, Henrico County, Virginia, United States, 23060

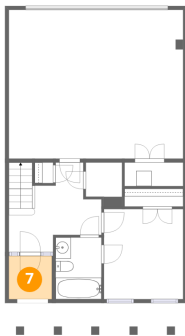
6 Floor 1 - Foyer



Dimensions: 12'1" x 9'5"
Area: 106 sq. ft
Counted as living area: Yes

Heated: Yes
Finished: Yes
Enclosed: Yes
Contiguous: Yes
Permitted: Yes
Wet space: No
Addition: No
Conversion: No

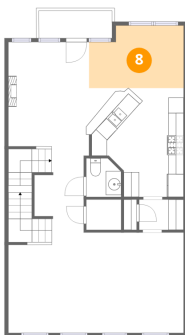
7 Floor 1 - Porch



Dimensions: 5'7" x 5'8"
Area: 32 sq. ft
Counted as living area: No

Heated: No
Finished: No
Enclosed: No
Contiguous: Yes
Permitted: Yes
Wet space: No
Addition: No
Conversion: No

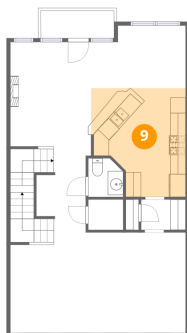
8 Floor 2 - Breakfast Nook



Dimensions: 12'3" x 8'1"
Area: 92 sq. ft
Counted as living area: Yes

Heated: Yes
Finished: Yes
Enclosed: Yes
Contiguous: Yes
Permitted: Yes
Wet space: No
Addition: No
Conversion: No

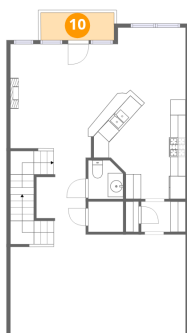
9 Floor 2 - Kitchen



Dimensions: 12'3" x 14'1"
Area: 150 sq. ft
Counted as living area: Yes

Heated: Yes
Finished: Yes
Enclosed: Yes
Contiguous: Yes
Permitted: Yes
Wet space: No
Addition: No
Conversion: No

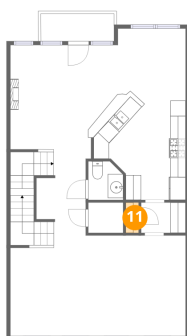
10 Floor 2 - Balcony



Dimensions: 9'6" x 3'7"
Area: 34 sq. ft
Counted as living area: No

Heated: No
Finished: No
Enclosed: No
Contiguous: Yes
Permitted: Yes
Wet space: No
Addition: No
Conversion: No

11 Floor 2 - Pantry

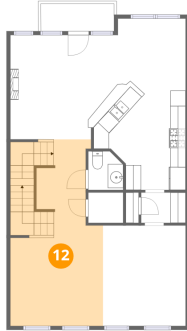


Dimensions: 1'8" x 3'11"
Area: 7 sq. ft
Counted as living area: Yes

Heated: Yes
Finished: Yes
Enclosed: Yes
Contiguous: Yes
Permitted: Yes
Wet space: No
Addition: No
Conversion: No

3818 Wild Goose Lane, Short Pump, Glen Allen, Henrico County, Virginia, United States, 23060

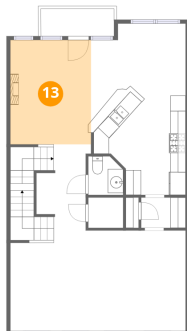
12 Floor 2 - Living Room



Dimensions: 12'0" x 24'2"
Area: 264 sq. ft
Counted as living area: Yes

Heated: Yes
Finished: Yes
Enclosed: Yes
Contiguous: Yes
Permitted: Yes
Wet space: No
Addition: No
Conversion: No

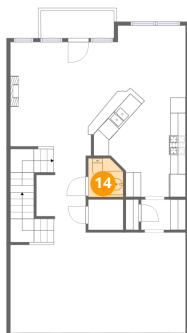
13 Floor 2 - Family Room



Dimensions: 10'6" x 13'6"
Area: 141 sq. ft
Counted as living area: Yes

Heated: Yes
Finished: Yes
Enclosed: Yes
Contiguous: Yes
Permitted: Yes
Wet space: No
Addition: No
Conversion: No

14 Floor 2 - WC

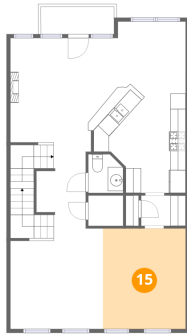


Dimensions: 4'6" x 5'0"
Area: 21 sq. ft
Counted as living area: Yes

Heated: Yes
Finished: Yes
Enclosed: Yes
Contiguous: Yes
Permitted: Yes
Wet space: Yes
Addition: No
Conversion: No

3818 Wild Goose Lane, Short Pump, Glen Allen, Henrico County, Virginia, United States, 23060

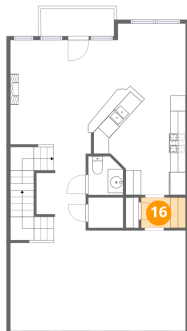
15 Floor 2 - Dining Area



Dimensions: 10'9" x 13'0"
Area: 140 sq. ft
Counted as living area: Yes

Heated: Yes
Finished: Yes
Enclosed: Yes
Contiguous: Yes
Permitted: Yes
Wet space: No
Addition: No
Conversion: No

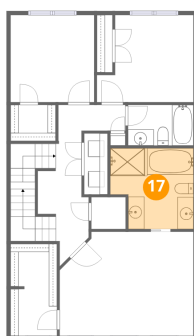
16 Floor 2 - Hall



Dimensions: 5'9" x 3'11"
Area: 23 sq. ft
Counted as living area: Yes

Heated: Yes
Finished: Yes
Enclosed: Yes
Contiguous: Yes
Permitted: Yes
Wet space: No
Addition: No
Conversion: No

17 Floor 3 - Ensuite

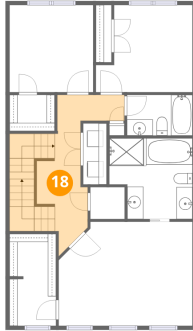


Dimensions: 10'4" x 10'0"
Area: 94 sq. ft
Counted as living area: Yes

Heated: Yes
Finished: Yes
Enclosed: Yes
Contiguous: Yes
Permitted: Yes
Wet space: Yes
Addition: No
Conversion: No

3818 Wild Goose Lane, Short Pump, Glen Allen, Henrico County, Virginia, United States, 23060

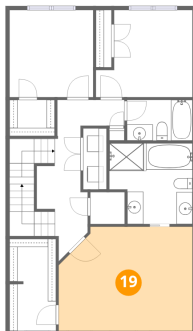
18 Floor 3 - Hall



Dimensions: 9'10" x 17'10"
Area: 148 sq. ft
Counted as living area: Yes

Heated: Yes
Finished: Yes
Enclosed: Yes
Contiguous: Yes
Permitted: Yes
Wet space: No
Addition: No
Conversion: No

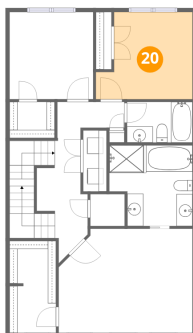
19 Floor 3 - Primary Bedroom



Dimensions: 16'8" x 12'11"
Area: 204 sq. ft
Counted as living area: Yes

Heated: Yes
Finished: Yes
Enclosed: Yes
Contiguous: Yes
Permitted: Yes
Wet space: No
Addition: No
Conversion: No

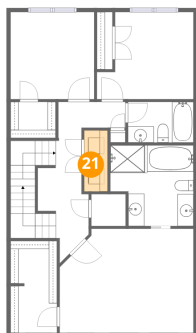
20 Floor 3 - Bedroom



Dimensions: 12'0" x 10'10"
Area: 113 sq. ft
Counted as living area: Yes

Heated: Yes
Finished: Yes
Enclosed: Yes
Contiguous: Yes
Permitted: Yes
Wet space: No
Addition: No
Conversion: No

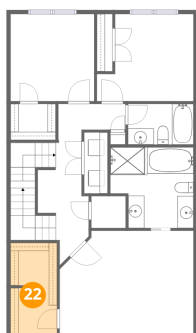
21 Floor 3 - Laundry



Dimensions: 2'11" x 7'7"
Area: 22 sq. ft
Counted as living area: Yes

Heated: Yes
Finished: Yes
Enclosed: Yes
Contiguous: Yes
Permitted: Yes
Wet space: No
Addition: No
Conversion: No

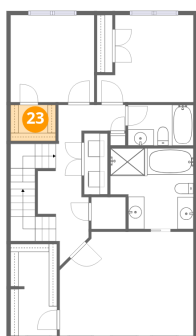
22 Floor 3 - W.I.C.



Dimensions: 5'9" x 11'5"
Area: 65 sq. ft
Counted as living area: Yes

Heated: Yes
Finished: Yes
Enclosed: Yes
Contiguous: Yes
Permitted: Yes
Wet space: No
Addition: No
Conversion: No

23 Floor 3 - W.I.C.

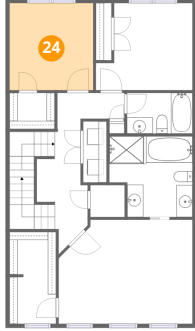


Dimensions: 5'7" x 4'6"
Area: 25 sq. ft
Counted as living area: Yes

Heated: Yes
Finished: Yes
Enclosed: Yes
Contiguous: Yes
Permitted: Yes
Wet space: No
Addition: No
Conversion: No

3818 Wild Goose Lane, Short Pump, Glen Allen, Henrico County, Virginia, United States, 23060

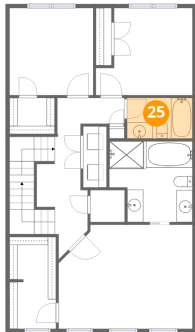
24 Floor 3 - Bedroom



Dimensions: 10'5" x 10'10"
Area: 112 sq. ft
Counted as living area: Yes

Heated: Yes
Finished: Yes
Enclosed: Yes
Contiguous: Yes
Permitted: Yes
Wet space: No
Addition: No
Conversion: No

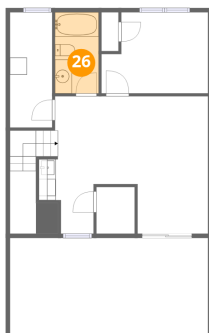
25 Floor 3 - Bath



Dimensions: 8'2" x 5'1"
Area: 41 sq. ft
Counted as living area: Yes

Heated: Yes
Finished: Yes
Enclosed: Yes
Contiguous: Yes
Permitted: Yes
Wet space: Yes
Addition: No
Conversion: No

26 Floor 4 - Bath

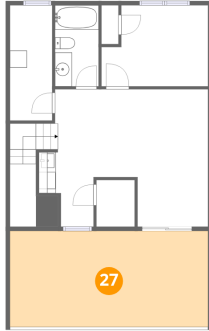


Dimensions: 5'1" x 9'6"
Area: 49 sq. ft
Counted as living area: Yes

Heated: Yes
Finished: Yes
Enclosed: Yes
Contiguous: Yes
Permitted: Yes
Wet space: Yes
Addition: No
Conversion: No

3818 Wild Goose Lane, Short Pump, Glen Allen, Henrico County, Virginia, United States, 23060

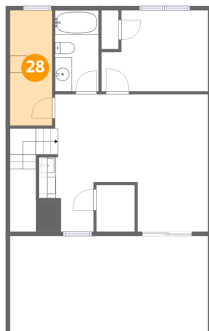
27 Floor 4 - Balcony



Dimensions: 23'3" x 11'3"
Area: 261 sq. ft
Counted as living area: No

Heated: No
Finished: No
Enclosed: No
Contiguous: Yes
Permitted: Yes
Wet space: No
Addition: No
Conversion: No

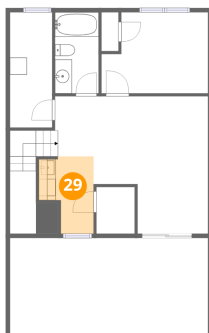
28 Floor 4 - Utility



Dimensions: 4'11" x 13'6"
Area: 67 sq. ft
Counted as living area: No

Heated: Yes
Finished: No
Enclosed: Yes
Contiguous: Yes
Permitted: Yes
Wet space: No
Addition: No
Conversion: No

29 Floor 4 - Wet Bar

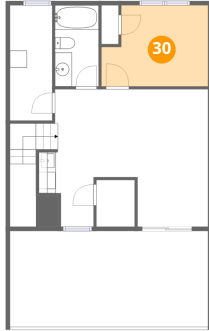


Dimensions: 6'5" x 9'1"
Area: 47 sq. ft
Counted as living area: Yes

Heated: Yes
Finished: Yes
Enclosed: Yes
Contiguous: Yes
Permitted: Yes
Wet space: No
Addition: No
Conversion: No

**3818 Wild Goose Lane, Short Pump, Glen Allen, Henrico County,
Virginia, United States, 23060**

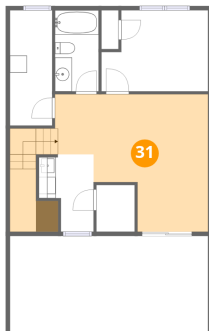
30 Floor 4 - Bedroom



Dimensions: 12'6" x 9'6"
Area: 107 sq. ft
Counted as living area: Yes

Heated: Yes
Finished: Yes
Enclosed: Yes
Contiguous: Yes
Permitted: Yes
Wet space: No
Addition: No
Conversion: No

31 Floor 4 - Sitting Room



Dimensions: 17'11" x 16'1"
Area: 271 sq. ft
Counted as living area: Yes

Heated: Yes
Finished: Yes
Enclosed: Yes
Contiguous: Yes
Permitted: Yes
Wet space: No
Addition: No
Conversion: No