




Total Area: 1682 sq. ft

1st Floor: 776 sq. ft, 2nd Floor: 906 sq. ft

Excluded: Utility 109 sq. ft, Patio 135 sq. ft, Walls: 126 sq. ft

Property summary

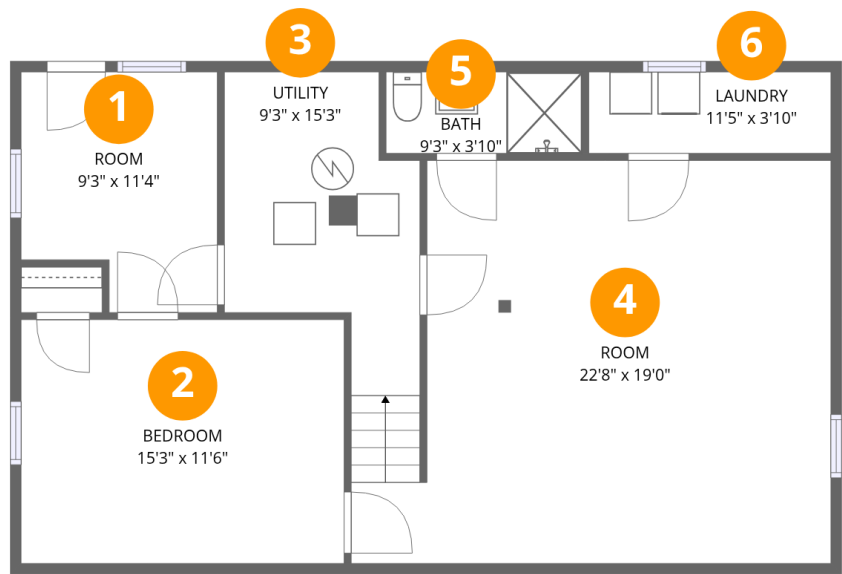
 2 Floors

 3 Bedrooms

 2 Bathrooms

Home data report

232 Verndale Drive, Roanoke, Virginia 24019, United States

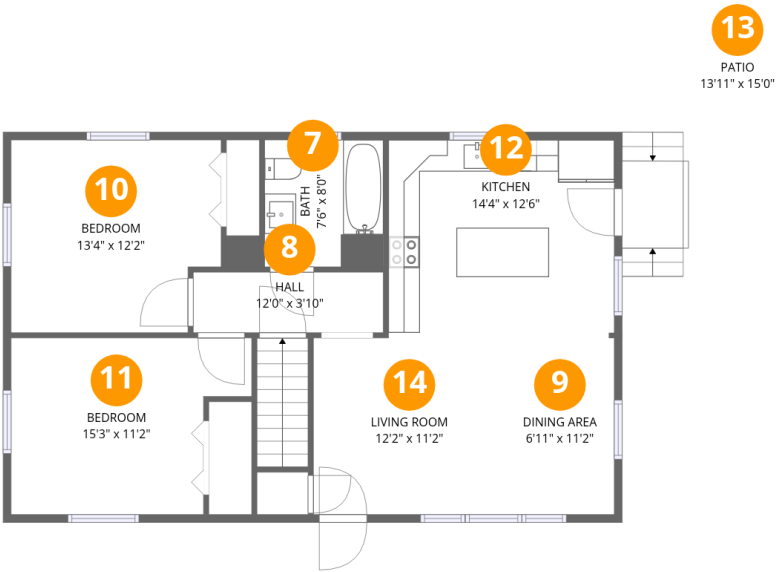


Room dimensions

Floor 1

Total:776sqft Excluded: 109sqft

#		Dimensions	sqft	Counted as living area
1	Room	9'3" x 11'4"	105 sq. ft	Yes
2	Bedroom	15'3" x 11'6"	175 sq. ft	Yes
3	Utility	9'3" x 15'3"	140 sq. ft	No
4	Room	22'8" x 19'0"	430 sq. ft	Yes
5	Bath	9'3" x 3'10"	35 sq. ft	Yes
6	Laundry	11'5" x 3'10"	44 sq. ft	Yes

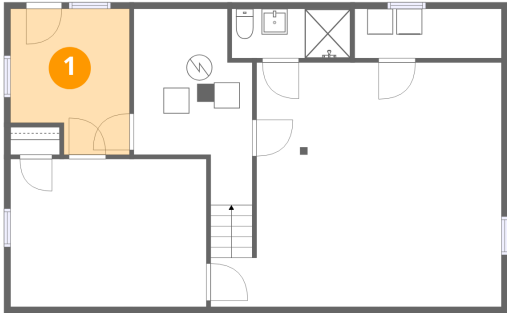


Room dimensions

Floor 2 Total:906sqft Excluded: 135sqft

#		Dimensions	sqft	Counted as living area
7	Bath	7'6" x 8'0"	60 sq. ft	Yes
8	Hall	12'0" x 3'10"	46 sq. ft	Yes
9	Dining Area	6'11" x 11'2"	77 sq. ft	Yes
10	Bedroom	13'4" x 12'2"	162 sq. ft	Yes
11	Bedroom	15'3" x 11'2"	170 sq. ft	Yes
12	Kitchen	14'4" x 12'6"	179 sq. ft	Yes
13	Patio	13'11" x 15'0"	209 sq. ft	No
14	Living Room	12'2" x 11'2"	136 sq. ft	Yes

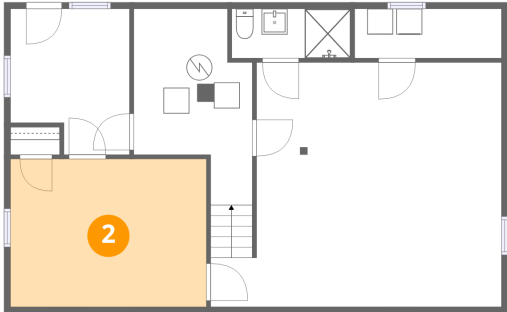
1 Floor 1 - Room



Dimensions: 9'3" x 11'4"
Area: 105 sq. ft
Counted as living area: Yes

Heated: Yes
Finished: Yes
Enclosed: Yes
Contiguous: Yes
Permitted: Yes
Wet space: No
Addition: No
Conversion: No

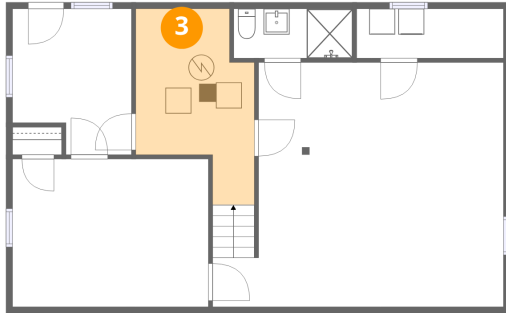
2 Floor 1 - Bedroom



Dimensions: 15'3" x 11'6"
Area: 175 sq. ft
Counted as living area: Yes

Heated: Yes
Finished: Yes
Enclosed: Yes
Contiguous: Yes
Permitted: Yes
Wet space: No
Addition: No
Conversion: No

3 Floor 1 - Utility



Dimensions: 9'3" x 15'3"
Area: 140 sq. ft
Counted as living area: No

Heated: Yes
Finished: No
Enclosed: Yes
Contiguous: Yes
Permitted: Yes
Wet space: No
Addition: No
Conversion: No

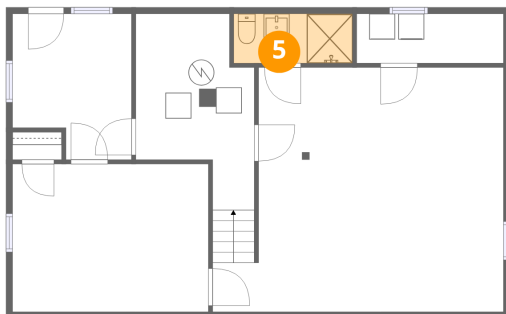
4 Floor 1 - Room



Dimensions: 22'8" x 19'0"
Area: 430 sq. ft
Counted as living area: Yes

Heated: Yes
Finished: Yes
Enclosed: Yes
Contiguous: Yes
Permitted: Yes
Wet space: No
Addition: No
Conversion: No

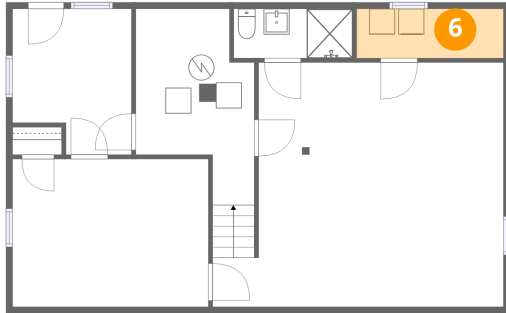
5 Floor 1 - Bath



Dimensions: 9'3" x 3'10"
Area: 35 sq. ft
Counted as living area: Yes

Heated: Yes
Finished: Yes
Enclosed: Yes
Contiguous: Yes
Permitted: Yes
Wet space: Yes
Addition: No
Conversion: No

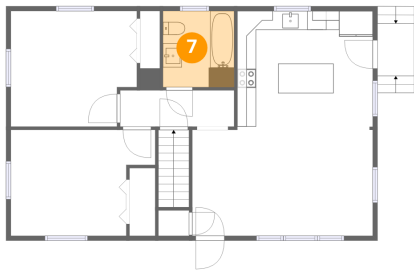
6 Floor 1 - Laundry



Dimensions: 11'5" x 3'10"
Area: 44 sq. ft
Counted as living area: Yes

Heated: Yes
Finished: Yes
Enclosed: Yes
Contiguous: Yes
Permitted: Yes
Wet space: No
Addition: No
Conversion: No

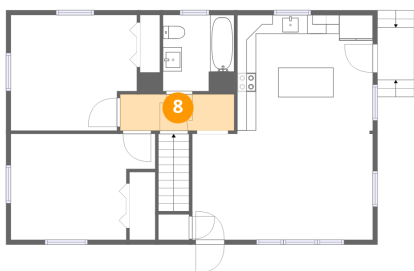
7 Floor 2 - Bath



Dimensions: 7'6" x 8'0"
Area: 60 sq. ft
Counted as living area: Yes

Heated: Yes
Finished: Yes
Enclosed: Yes
Contiguous: Yes
Permitted: Yes
Wet space: Yes
Addition: No
Conversion: No

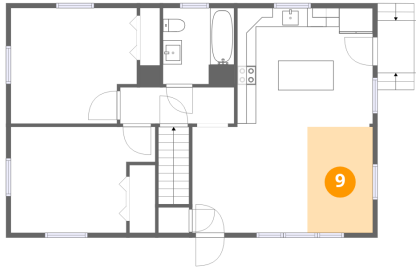
8 Floor 2 - Hall



Dimensions: 12'0" x 3'10"
Area: 46 sq. ft
Counted as living area: Yes

Heated: Yes
Finished: Yes
Enclosed: Yes
Contiguous: Yes
Permitted: Yes
Wet space: No
Addition: No
Conversion: No

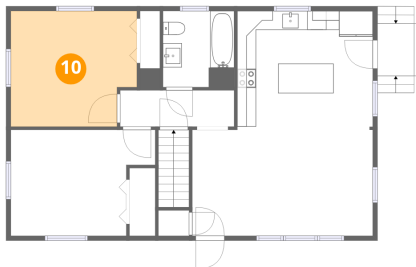
9 Floor 2 - Dining Area



Dimensions: 6'11" x 11'2"
Area: 77 sq. ft
Counted as living area: Yes

Heated: Yes
Finished: Yes
Enclosed: Yes
Contiguous: Yes
Permitted: Yes
Wet space: No
Addition: No
Conversion: No

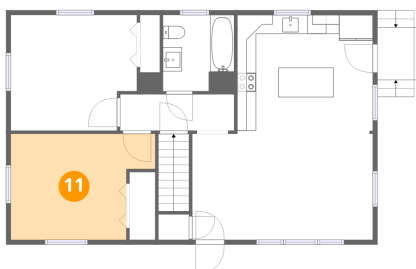
10 Floor 2 - Bedroom



Dimensions: 13'4" x 12'2"
Area: 162 sq. ft
Counted as living area: Yes

Heated: Yes
Finished: Yes
Enclosed: Yes
Contiguous: Yes
Permitted: Yes
Wet space: No
Addition: No
Conversion: No

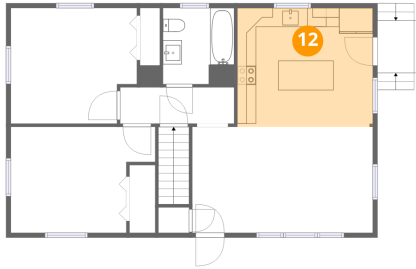
11 Floor 2 - Bedroom



Dimensions: 15'3" x 11'2"
Area: 170 sq. ft
Counted as living area: Yes

Heated: Yes
Finished: Yes
Enclosed: Yes
Contiguous: Yes
Permitted: Yes
Wet space: No
Addition: No
Conversion: No

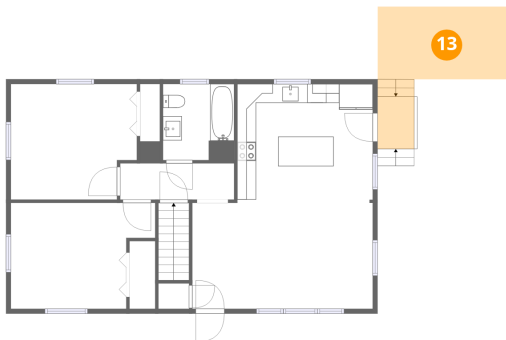
12 Floor 2 - Kitchen



Dimensions: 14'4" x 12'6"
Area: 179 sq. ft
Counted as living area: Yes

Heated: Yes
Finished: Yes
Enclosed: Yes
Contiguous: Yes
Permitted: Yes
Wet space: No
Addition: No
Conversion: No

13 Floor 2 - Patio



Dimensions: 13'11" x 15'0"
Area: 209 sq. ft
Counted as living area: No

Heated: No
Finished: No
Enclosed: No
Contiguous: Yes
Permitted: Yes
Wet space: No
Addition: No
Conversion: No

14 Floor 2 - Living Room



Dimensions: 12'2" x 11'2"
Area: 136 sq. ft
Counted as living area: Yes

Heated: Yes
Finished: Yes
Enclosed: Yes
Contiguous: Yes
Permitted: Yes
Wet space: No
Addition: No
Conversion: No