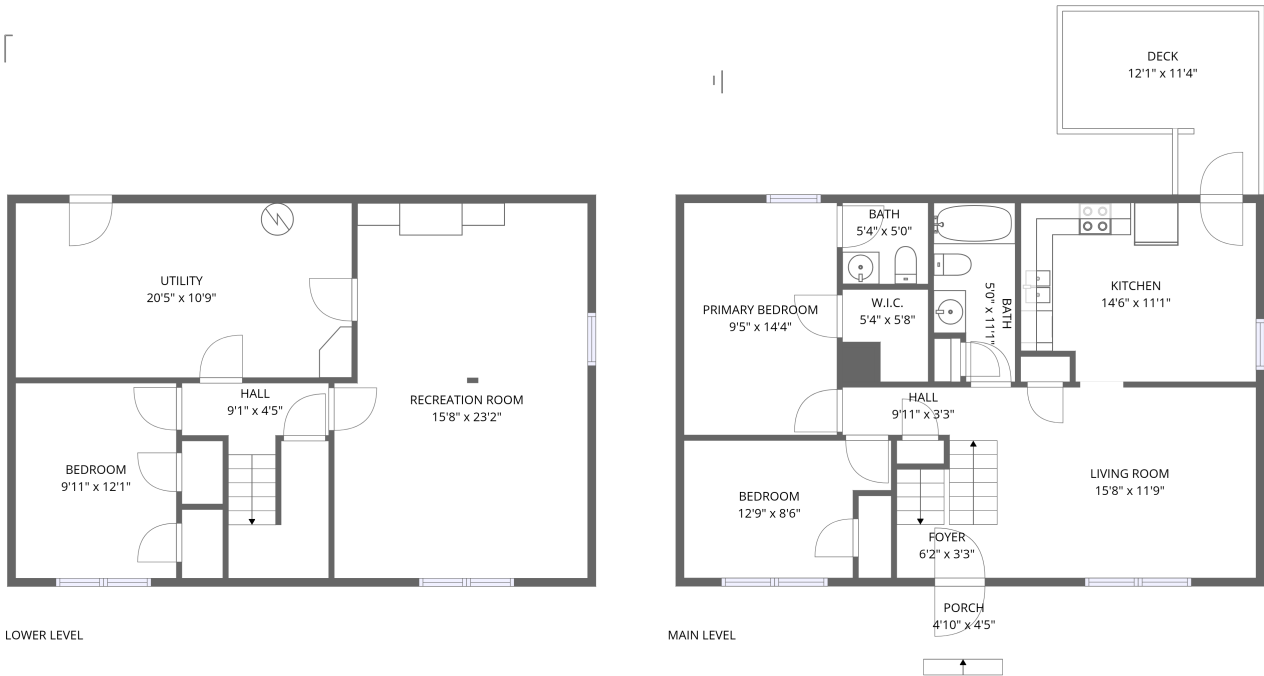


Home data report

8530 Bullington Circle, Willow Green, Roanoke, Roanoke County,
Virginia, United States, 24019



Total Area: 1298 sq. ft

1st Floor: 481 sq. ft, 2nd Floor: 817 sq. ft

Excluded: Hall 91 sq. ft, Utility 224 sq. ft, Undefined 22 sq. ft, Deck 108 sq. ft, Porch 22 sq. ft, Walls: 119 sq. ft

Property summary

 **2** Floors

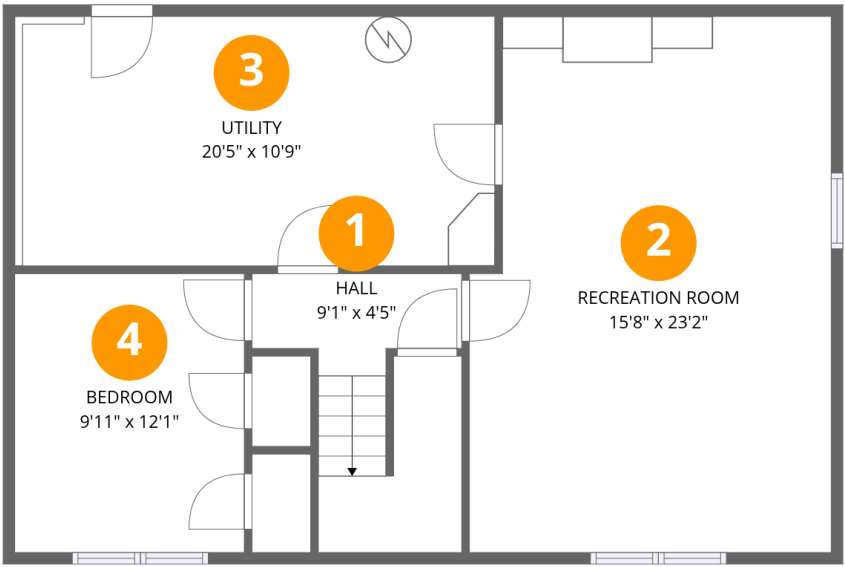
 **3** Bedrooms

 **1** Bathrooms

 **1** Half baths

Home data report

8530 Bullington Circle, Willow Green, Roanoke, Roanoke County,
Virginia, United States, 24019



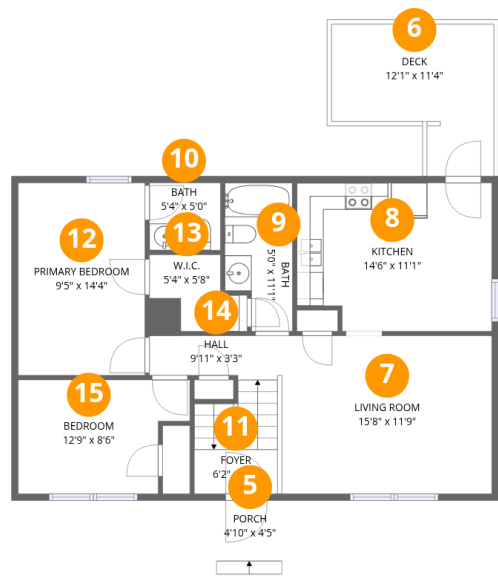
Room dimensions

Floor 1 Total:481sqft Excluded: 337sqft

#		Dimensions	sqft	Counted as living area
1	Hall	9'1" x 4'5"	81 sq. ft	No
2	Recreation Room	15'8" x 23'2"	346 sq. ft	Yes
3	Utility	20'5" x 10'9"	224 sq. ft	No
4	Bedroom	9'11" x 12'1"	120 sq. ft	Yes

Home data report

8530 Bullington Circle, Willow Green, Roanoke, Roanoke County, Virginia, United States, 24019

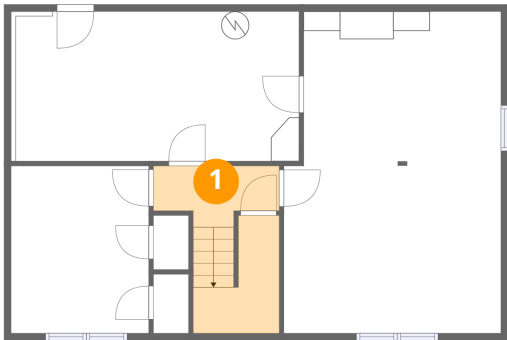


Room dimensions

Floor 2 Total:817sqft Excluded: 130sqft

#		Dimensions	sqft	Counted as living area
5	Porch	4'10" x 4'5"	22 sq. ft	No
6	Deck	12'1" x 11'4"	108 sq. ft	No
7	Living Room	15'8" x 11'9"	184 sq. ft	Yes
8	Kitchen	14'6" x 11'1"	154 sq. ft	Yes
9	Bath	5'0" x 11'1"	50 sq. ft	Yes
10	Bath	5'4" x 5'0"	27 sq. ft	Yes
11	Foyer	6'2" x 3'3"	33 sq. ft	Yes
12	Primary Bedroom	9'5" x 14'4"	135 sq. ft	Yes
13	W.I.C.	5'4" x 5'8"	24 sq. ft	Yes
14	Hall	9'11" x 3'3"	47 sq. ft	Yes
15	Bedroom	12'9" x 8'6"	96 sq. ft	Yes

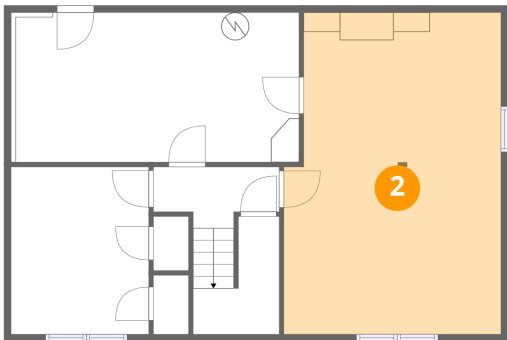
1 Floor 1 - Hall



Dimensions: 9'1" x 4'5"
Area: 81 sq. ft
Counted as living area: No

Heated: Yes
Finished: No
Enclosed: Yes
Contiguous: Yes
Permitted: Yes
Wet space: No
Addition: No
Conversion: No

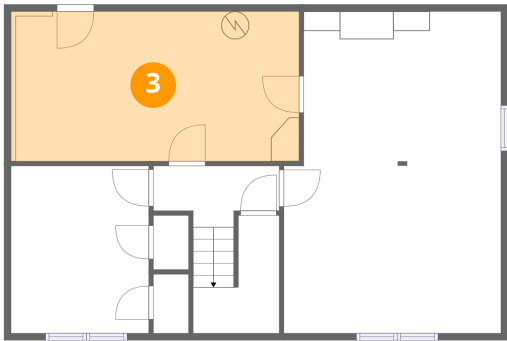
2 Floor 1 - Recreation Room



Dimensions: 15'8" x 23'2"
Area: 346 sq. ft
Counted as living area: No

Heated: Yes
Finished: Yes
Enclosed: Yes
Contiguous: No
Permitted: Yes
Wet space: No
Addition: No
Conversion: No

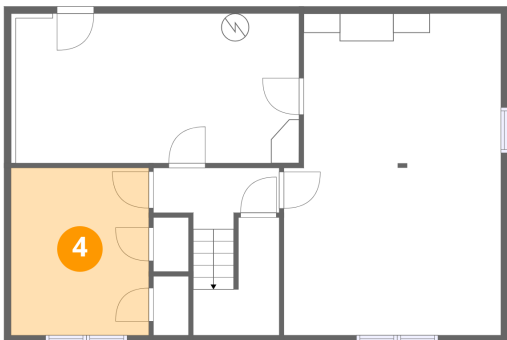
3 Floor 1 - Utility



Dimensions: 20'5" x 10'9"
Area: 224 sq. ft
Counted as living area: No

Heated: Yes
Finished: No
Enclosed: Yes
Contiguous: Yes
Permitted: Yes
Wet space: No
Addition: No
Conversion: No

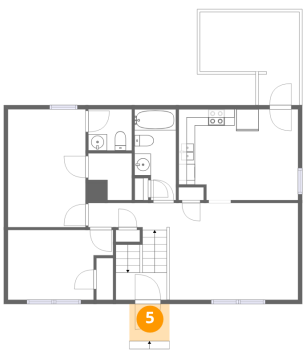
4 Floor 1 - Bedroom



Dimensions: 9'11" x 12'1"
Area: 120 sq. ft
Counted as living area: No

Heated: Yes
Finished: Yes
Enclosed: Yes
Contiguous: No
Permitted: Yes
Wet space: No
Addition: No
Conversion: No

5 Floor 2 - Porch

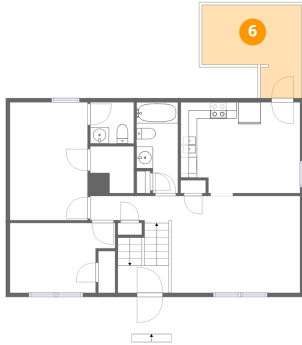


Dimensions: 4'10" x 4'5"
Area: 22 sq. ft
Counted as living area: No

Heated: No
Finished: No
Enclosed: No
Contiguous: Yes
Permitted: Yes
Wet space: No
Addition: No
Conversion: No

8530 Bullington Circle, Willow Green, Roanoke, Roanoke County,
Virginia, United States, 24019

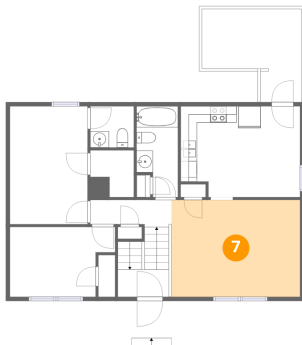
6 Floor 2 - Deck



Dimensions: 12'1" x 11'4"
Area: 108 sq. ft
Counted as living area: No

Heated: No
Finished: No
Enclosed: No
Contiguous: No
Permitted: Yes
Wet space: No
Addition: No
Conversion: No

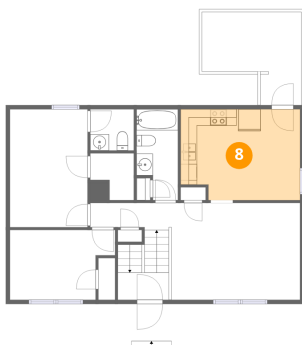
7 Floor 2 - Living Room



Dimensions: 15'8" x 11'9"
Area: 184 sq. ft
Counted as living area: Yes

Heated: Yes
Finished: Yes
Enclosed: Yes
Contiguous: Yes
Permitted: Yes
Wet space: No
Addition: No
Conversion: No

8 Floor 2 - Kitchen



Dimensions: 14'6" x 11'1"
Area: 154 sq. ft
Counted as living area: Yes

Heated: Yes
Finished: Yes
Enclosed: Yes
Contiguous: Yes
Permitted: Yes
Wet space: No
Addition: No
Conversion: No

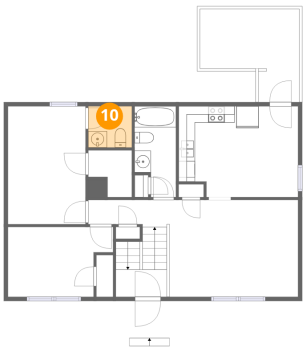
9 Floor 2 - Bath



Dimensions: 5'0" x 11'1"
Area: 50 sq. ft
Counted as living area: Yes

Heated: Yes
Finished: Yes
Enclosed: Yes
Contiguous: Yes
Permitted: Yes
Wet space: Yes
Addition: No
Conversion: No

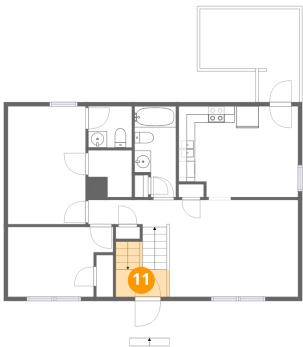
10 Floor 2 - Bath



Dimensions: 5'4" x 5'0"
Area: 27 sq. ft
Counted as living area: Yes

Heated: Yes
Finished: Yes
Enclosed: Yes
Contiguous: Yes
Permitted: Yes
Wet space: Yes
Addition: No
Conversion: No

11 Floor 2 - Foyer

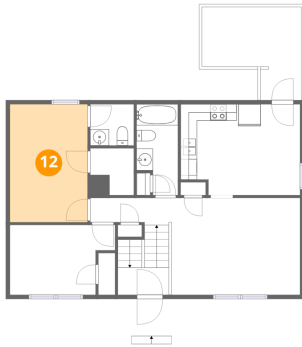


Dimensions: 6'2" x 3'3"
Area: 33 sq. ft
Counted as living area: Yes

Heated: Yes
Finished: Yes
Enclosed: Yes
Contiguous: Yes
Permitted: Yes
Wet space: No
Addition: No
Conversion: No

8530 Bullington Circle, Willow Green, Roanoke, Roanoke County,
Virginia, United States, 24019

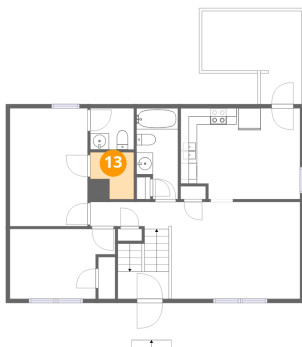
12 Floor 2 - Primary Bedroom



Dimensions: 9'5" x 14'4"
Area: 135 sq. ft
Counted as living area: Yes

Heated: Yes
Finished: Yes
Enclosed: Yes
Contiguous: Yes
Permitted: Yes
Wet space: No
Addition: No
Conversion: No

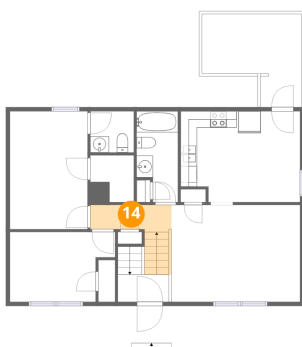
13 Floor 2 - W.I.C.



Dimensions: 5'4" x 5'8"
Area: 24 sq. ft
Counted as living area: Yes

Heated: Yes
Finished: Yes
Enclosed: Yes
Contiguous: Yes
Permitted: Yes
Wet space: No
Addition: No
Conversion: No

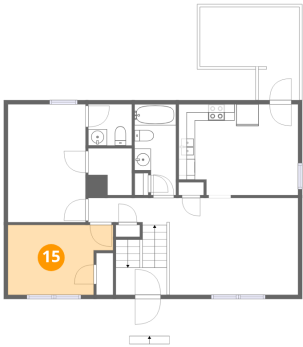
14 Floor 2 - Hall



Dimensions: 9'11" x 3'3"
Area: 47 sq. ft
Counted as living area: Yes

Heated: Yes
Finished: Yes
Enclosed: Yes
Contiguous: Yes
Permitted: Yes
Wet space: No
Addition: No
Conversion: No

15 Floor 2 - Bedroom



Dimensions: 12'9" x 8'6"
Area: 96 sq. ft
Counted as living area: Yes

Heated: Yes
Finished: Yes
Enclosed: Yes
Contiguous: Yes
Permitted: Yes
Wet space: No
Addition: No
Conversion: No