

# 409 Victoria St, West Mifflin, PA, US



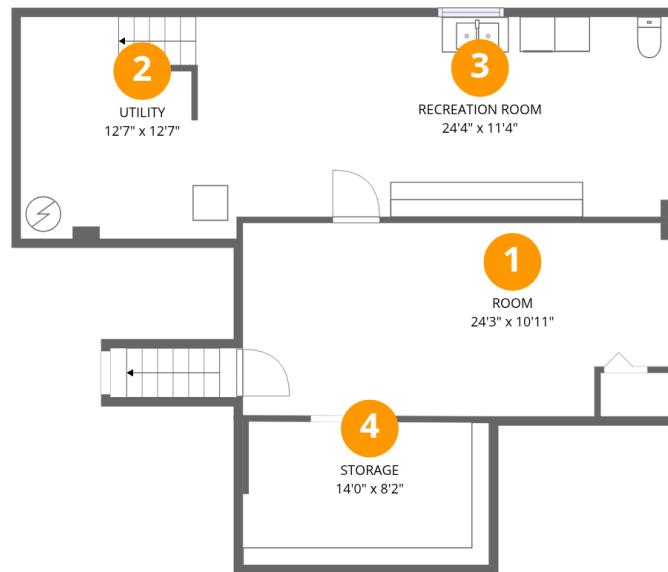
## Total Area: 1706 sq. ft

Basement: 577 sq. ft, 1st Floor: 900 sq. ft, 2nd Floor: 229 sq. ft, 3rd Floor: 0 sq. ft

Excluded: Storage 115 sq. ft, Utility 159 sq. ft, Deck 187 sq. ft, Porch 106 sq. ft, Fireplace 5 sq. ft, Low ceiling 118 sq. ft, Garage 614 sq. ft, Walls: 237 sq. ft

## Property summary





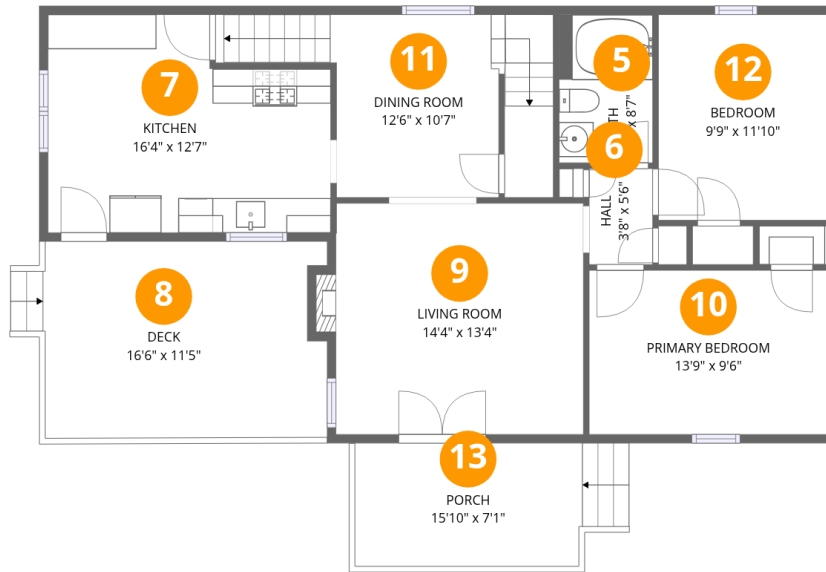
## Room dimensions

Floor 1 Below grade

Total: 577sqft

Excluded: 274sqft

#		Dimensions	sqft	Counted as living area
1	Room	24'3" x 10'11"	266 sq. ft	Yes
2	Utility	12'7" x 12'7"	159 sq. ft	No
3	Recreation Room	24'4" x 11'4"	276 sq. ft	Yes
4	Storage	14'0" x 8'2"	114 sq. ft	No



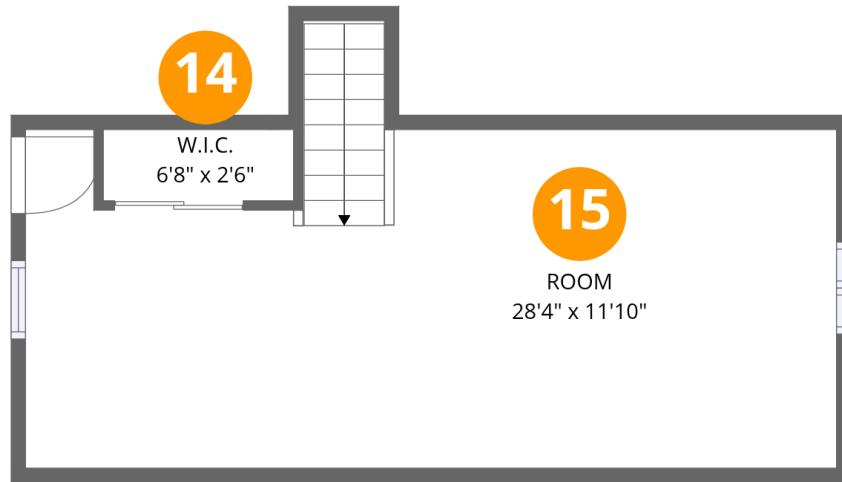
## Room dimensions

Floor 2

Total: 900sqft

Excluded: 298sqft

#		Dimensions	sqft	Counted as living area
5	Bath	5'5" x 8'7"	46 sq. ft	Yes
6	Hall	3'8" x 5'6"	20 sq. ft	Yes
7	Kitchen	16'4" x 12'7"	206 sq. ft	Yes
8	Deck	16'6" x 11'5"	188 sq. ft	No
9	Living Room	14'4" x 13'4"	191 sq. ft	Yes
10	Primary Bedroom	13'9" x 9'6"	130 sq. ft	Yes
11	Dining Room	12'6" x 10'7"	132 sq. ft	Yes
12	Bedroom	9'9" x 11'10"	116 sq. ft	Yes
13	Porch	15'10" x 7'1"	112 sq. ft	No



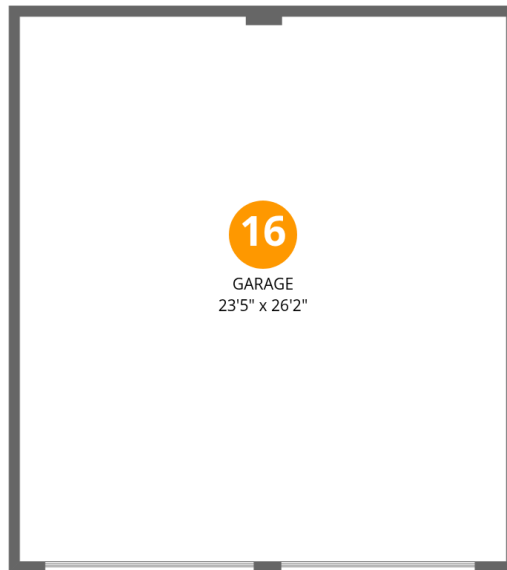
## Room dimensions

Floor 3

Total:229sqft

Excluded: 118sqft

#		Dimensions	sqft	Counted as living area
14	W.I.C.	6'8" x 2'6"	17 sq. ft	Yes
15	Room	28'4" x 11'10"	336 sq. ft	Yes



## Room dimensions

Floor 4

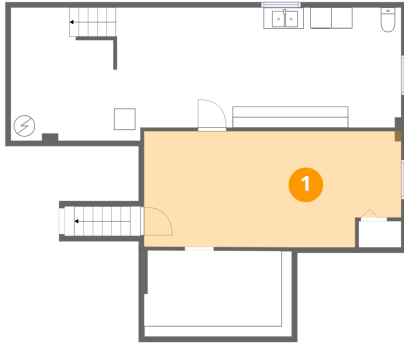
Total: 0sqft

Excluded: 614sqft

#		Dimensions	sqft	Counted as living area
16	Garage	23'5" x 26'2"	614 sq. ft	No

### 1 Floor 1 - Room

---

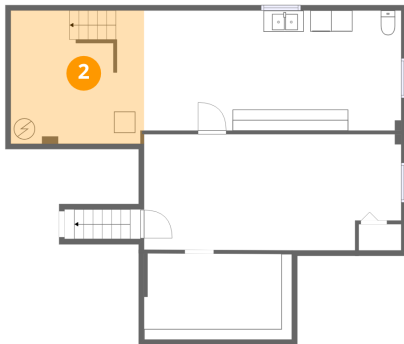


Dimensions: 24'3" x 10'11"  
Area: 266 sq. ft  
Counted as living area: Yes

Heated: Yes  
Finished: Yes  
Enclosed: Yes  
Contiguous: Yes  
Permitted: Yes  
Wet space: No  
Addition: No  
Conversion: No

### 2 Floor 1 - Utility

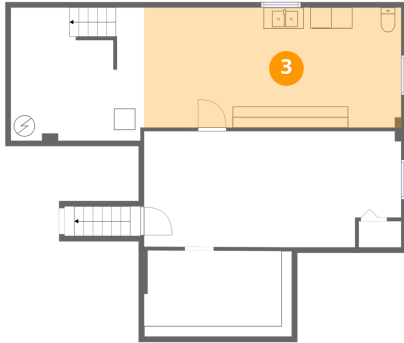
---



Dimensions: 12'7" x 12'7"  
Area: 159 sq. ft  
Counted as living area: No

Heated: Yes  
Finished: No  
Enclosed: Yes  
Contiguous: Yes  
Permitted: Yes  
Wet space: No  
Addition: No  
Conversion: No

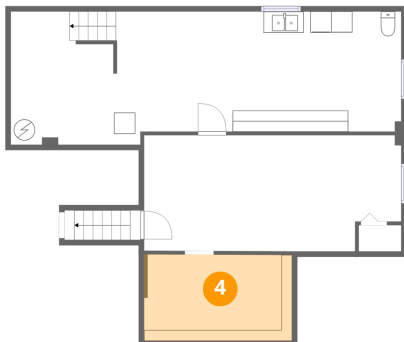
### 3 Floor 1 - Recreation Room



Dimensions: 24'4" x 11'4"  
Area: 276 sq. ft  
Counted as living area: Yes

Heated: Yes  
Finished: Yes  
Enclosed: Yes  
Contiguous: Yes  
Permitted: Yes  
Wet space: No  
Addition: No  
Conversion: No

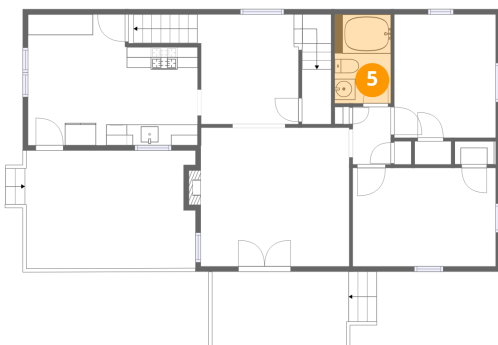
### 4 Floor 1 - Storage



Dimensions: 14'0" x 8'2"  
Area: 114 sq. ft  
Counted as living area: No

Heated: No  
Finished: Yes  
Enclosed: No  
Contiguous: Yes  
Permitted: Yes  
Wet space: No  
Addition: No  
Conversion: No

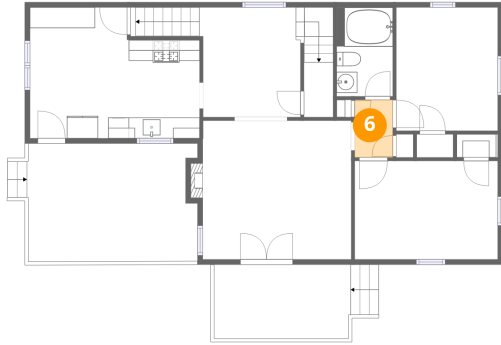
### 5 Floor 2 - Bath



Dimensions: 5'5" x 8'7"  
Area: 46 sq. ft  
Counted as living area: Yes

Heated: Yes  
Finished: Yes  
Enclosed: Yes  
Contiguous: Yes  
Permitted: Yes  
Wet space: Yes  
Addition: No  
Conversion: No

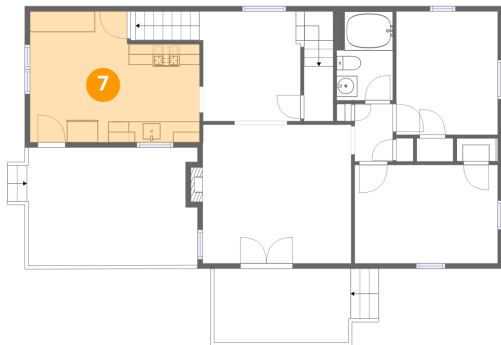
### 6 Floor 2 - Hall



Dimensions: 3'8" x 5'6"  
Area: 20 sq. ft  
Counted as living area: Yes

Heated: Yes  
Finished: Yes  
Enclosed: Yes  
Contiguous: Yes  
Permitted: Yes  
Wet space: No  
Addition: No  
Conversion: No

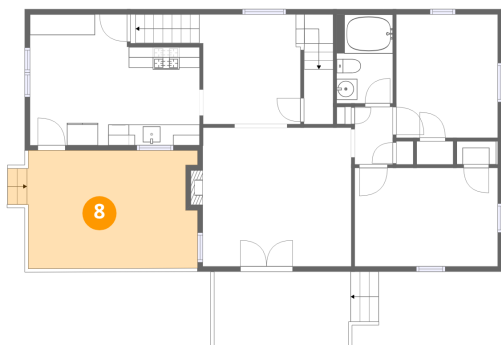
### 7 Floor 2 - Kitchen



Dimensions: 16'4" x 12'7"  
Area: 206 sq. ft  
Counted as living area: Yes

Heated: Yes  
Finished: Yes  
Enclosed: Yes  
Contiguous: Yes  
Permitted: Yes  
Wet space: No  
Addition: No  
Conversion: No

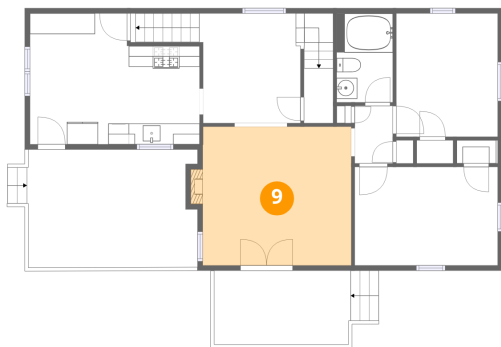
### 8 Floor 2 - Deck



Dimensions: 16'6" x 11'5"  
Area: 188 sq. ft  
Counted as living area: No

Heated: No  
Finished: No  
Enclosed: No  
Contiguous: Yes  
Permitted: Yes  
Wet space: No  
Addition: No  
Conversion: No

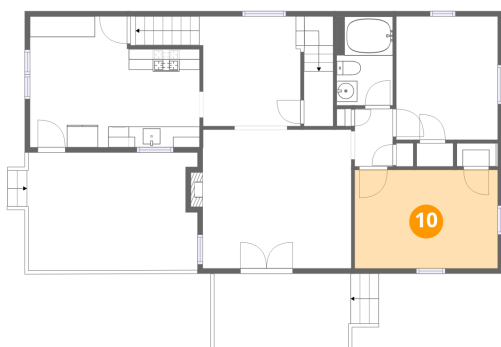
### 9 Floor 2 - Living Room



Dimensions: 14'4" x 13'4"  
Area: 191 sq. ft  
Counted as living area: Yes

Heated: Yes  
Finished: Yes  
Enclosed: Yes  
Contiguous: Yes  
Permitted: Yes  
Wet space: No  
Addition: No  
Conversion: No

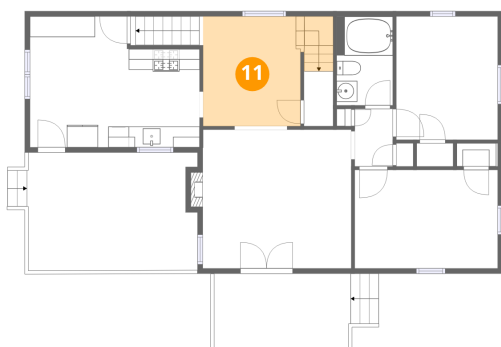
### 10 Floor 2 - Primary Bedroom



Dimensions: 13'9" x 9'6"  
Area: 130 sq. ft  
Counted as living area: Yes

Heated: Yes  
Finished: Yes  
Enclosed: Yes  
Contiguous: Yes  
Permitted: Yes  
Wet space: No  
Addition: No  
Conversion: No

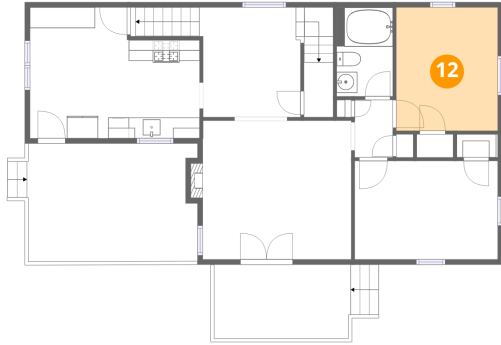
### 11 Floor 2 - Dining Room



Dimensions: 12'6" x 10'7"  
Area: 132 sq. ft  
Counted as living area: Yes

Heated: Yes  
Finished: Yes  
Enclosed: Yes  
Contiguous: Yes  
Permitted: Yes  
Wet space: No  
Addition: No  
Conversion: No

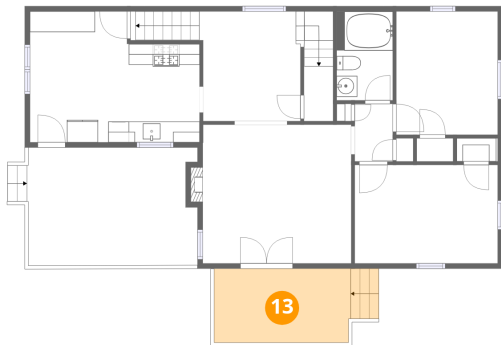
**12** Floor 2 - Bedroom



Dimensions: 9'9" x 11'10"  
Area: 116 sq. ft  
Counted as living area: Yes

Heated: Yes  
Finished: Yes  
Enclosed: Yes  
Contiguous: Yes  
Permitted: Yes  
Wet space: No  
Addition: No  
Conversion: No

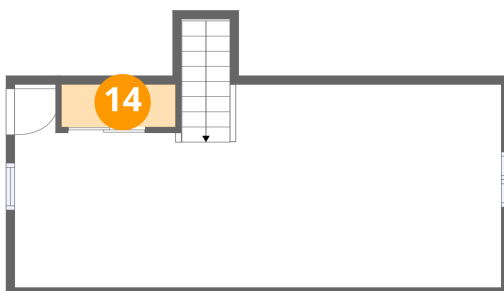
**13** Floor 2 - Porch



Dimensions: 15'10" x 7'1"  
Area: 112 sq. ft  
Counted as living area: No

Heated: No  
Finished: No  
Enclosed: No  
Contiguous: Yes  
Permitted: Yes  
Wet space: No  
Addition: No  
Conversion: No

**14** Floor 3 - W.I.C.

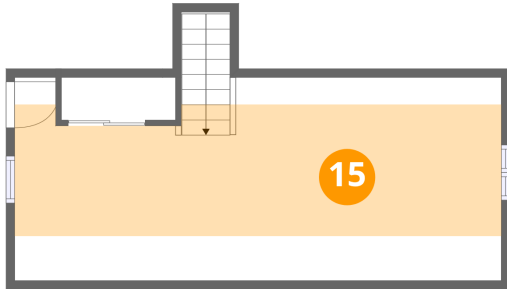


Dimensions: 6'8" x 2'6"  
Area: 17 sq. ft  
Counted as living area: Yes

Heated: Yes  
Finished: Yes  
Enclosed: Yes  
Contiguous: Yes  
Permitted: Yes  
Wet space: No  
Addition: No  
Conversion: No

**15** Floor 3 - Room

---

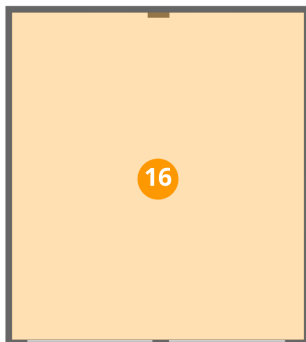


Dimensions: 28'4" x 11'10"  
Area: 336 sq. ft  
Counted as living area: Yes

Heated: Yes  
Finished: Yes  
Enclosed: Yes  
Contiguous: Yes  
Permitted: Yes  
Wet space: No  
Addition: No  
Conversion: No

**16** Floor 4 - Garage

---



Dimensions: 23'5" x 26'2"  
Area: 614 sq. ft  
Counted as living area: No

Heated: No  
Finished: No  
Enclosed: Yes  
Contiguous: Yes  
Permitted: Yes  
Wet space: No  
Addition: No  
Conversion: No