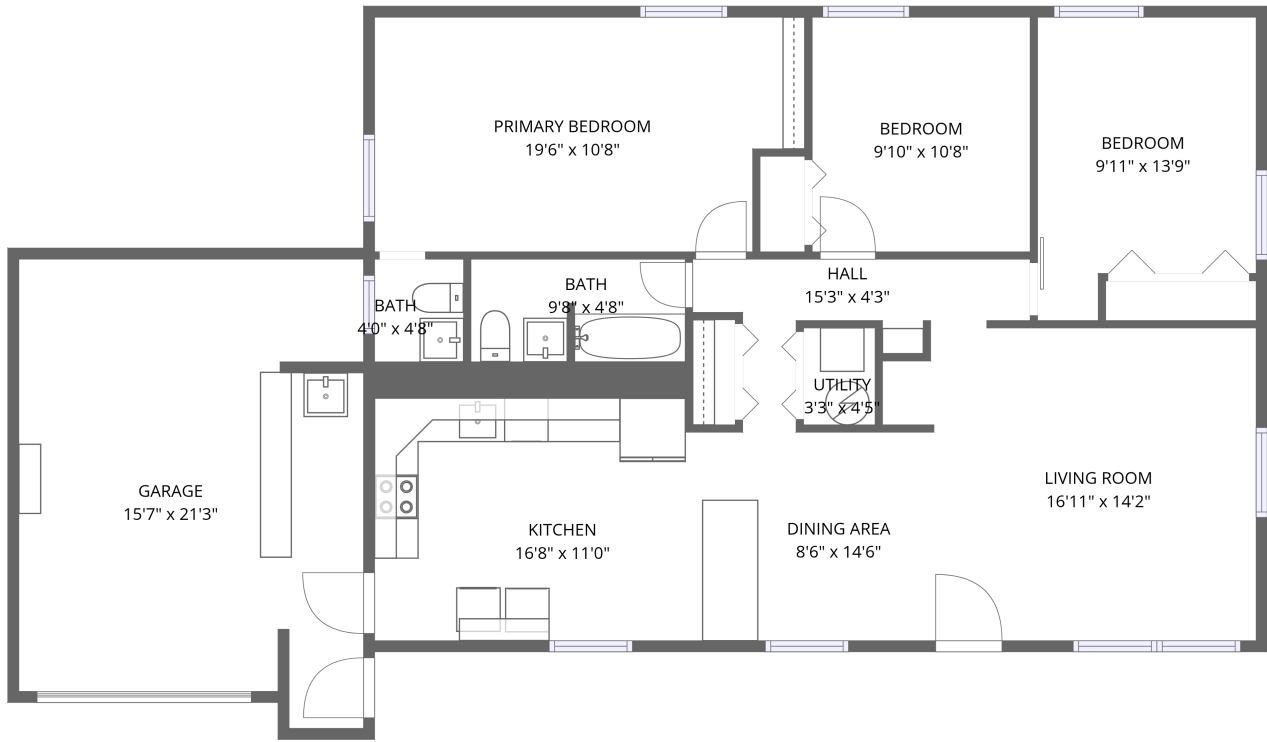


Home data report

904 Hemlock St, Shelbyville, IN, US



1st floor

Total Area: 1113 sq. ft


1st Floor: 1113 sq. ft

Excluded: Garage 308 sq. ft, Utility 14 sq. ft, Walls: 101 sq. ft

Property summary


 **1** Floors

 **3** Bedrooms

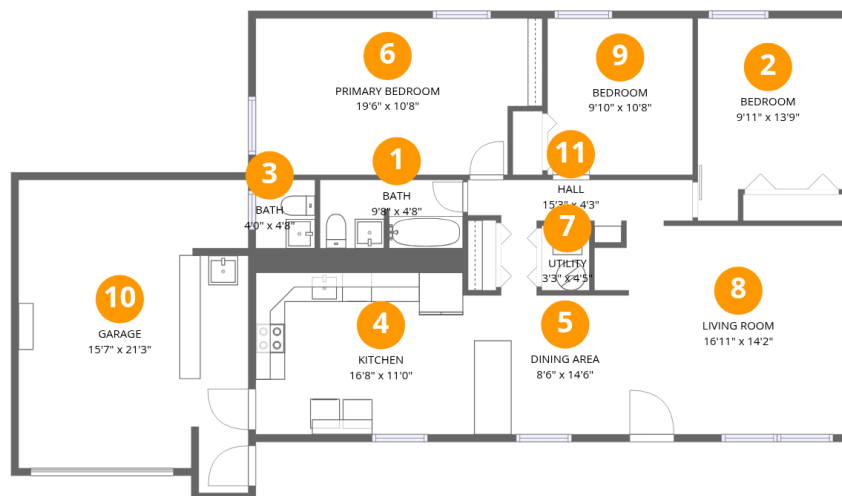
 **1** Bathrooms

Home data report

904 Hemlock St, Shelbyville, IN, US

 **1**
Half baths

 **1**
Garages



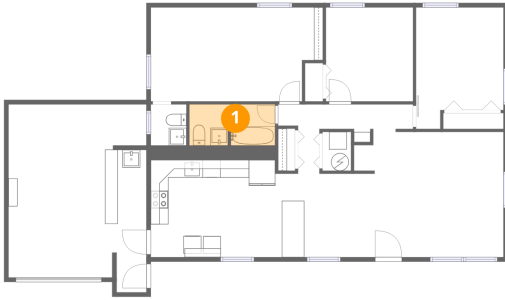
Room dimensions

Floor 1

Total: 1113sqft Excluded: 322sqft

#		Dimensions	sqft	Counted as living area
1	Bath	9'8" x 4'8"	44 sq. ft	Yes
2	Bedroom	9'11" x 13'9"	121 sq. ft	Yes
3	Bath	4'0" x 4'8"	19 sq. ft	Yes
4	Kitchen	16'8" x 11'0"	198 sq. ft	Yes
5	Dining Area	8'6" x 14'6"	93 sq. ft	Yes
6	Primary Bedroom	19'6" x 10'8"	196 sq. ft	Yes
7	Utility	3'3" x 4'5"	14 sq. ft	No
8	Living Room	16'11" x 14'2"	215 sq. ft	Yes
9	Bedroom	9'10" x 10'8"	105 sq. ft	Yes
10	Garage	15'7" x 21'3"	308 sq. ft	No
11	Hall	15'3" x 4'3"	45 sq. ft	Yes

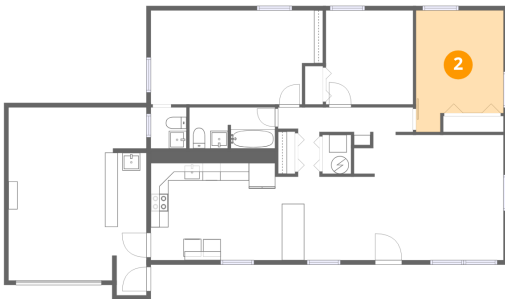
1 Floor 1 - Bath



Dimensions: 9'8" x 4'8"
Area: 44 sq. ft
Counted as living area: Yes

Heated: Yes
Finished: Yes
Enclosed: Yes
Contiguous: Yes
Permitted: Yes
Wet space: Yes
Addition: No
Conversion: No

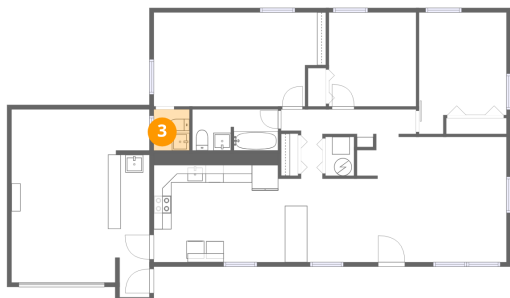
2 Floor 1 - Bedroom



Dimensions: 9'11" x 13'9"
Area: 121 sq. ft
Counted as living area: Yes

Heated: Yes
Finished: Yes
Enclosed: Yes
Contiguous: Yes
Permitted: Yes
Wet space: No
Addition: No
Conversion: No

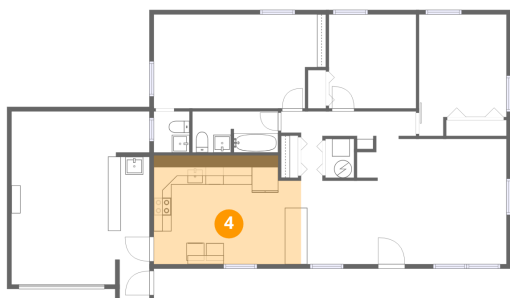
3 Floor 1 - Bath



Dimensions: 4'0" x 4'8"
Area: 19 sq. ft
Counted as living area: Yes

Heated: Yes
Finished: Yes
Enclosed: Yes
Contiguous: Yes
Permitted: Yes
Wet space: Yes
Addition: No
Conversion: No

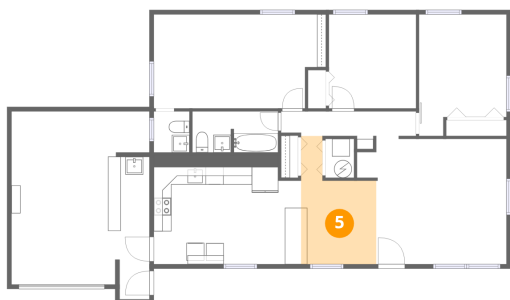
4 Floor 1 - Kitchen



Dimensions: 16'8" x 11'0"
Area: 198 sq. ft
Counted as living area: Yes

Heated: Yes
Finished: Yes
Enclosed: Yes
Contiguous: Yes
Permitted: Yes
Wet space: No
Addition: No
Conversion: No

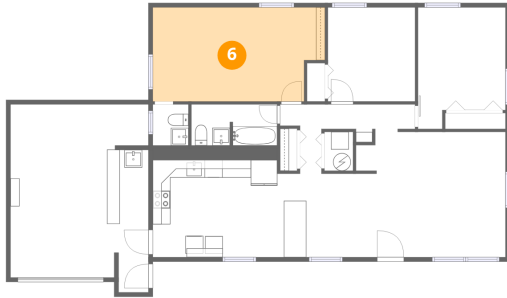
5 Floor 1 - Dining Area



Dimensions: 8'6" x 14'6"
Area: 93 sq. ft
Counted as living area: Yes

Heated: Yes
Finished: Yes
Enclosed: Yes
Contiguous: Yes
Permitted: Yes
Wet space: No
Addition: No
Conversion: No

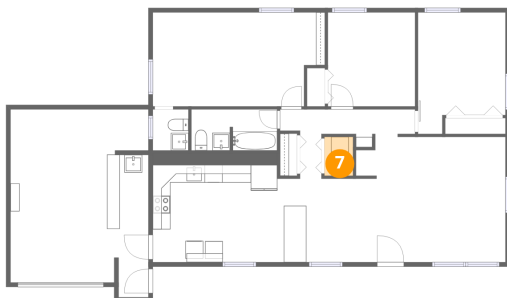
6 Floor 1 - Primary Bedroom



Dimensions: 19'6" x 10'8"
Area: 196 sq. ft
Counted as living area: Yes

Heated: Yes
Finished: Yes
Enclosed: Yes
Contiguous: Yes
Permitted: Yes
Wet space: No
Addition: No
Conversion: No

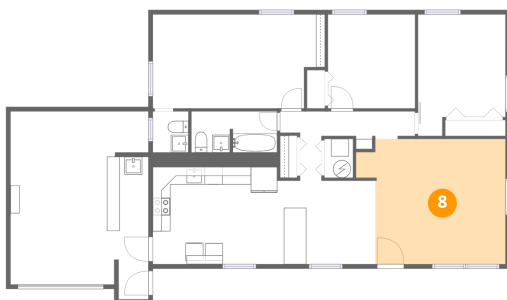
7 Floor 1 - Utility



Dimensions: 3'3" x 4'5"
Area: 14 sq. ft
Counted as living area: No

Heated: Yes
Finished: No
Enclosed: Yes
Contiguous: Yes
Permitted: Yes
Wet space: No
Addition: No
Conversion: No

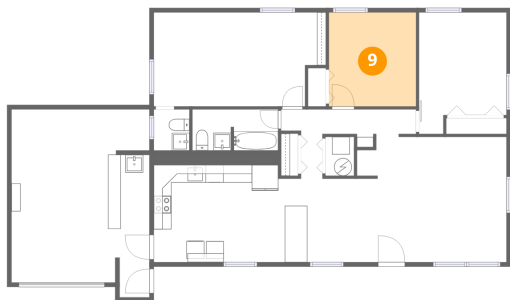
8 Floor 1 - Living Room



Dimensions: 16'11" x 14'2"
Area: 215 sq. ft
Counted as living area: Yes

Heated: Yes
Finished: Yes
Enclosed: Yes
Contiguous: Yes
Permitted: Yes
Wet space: No
Addition: No
Conversion: No

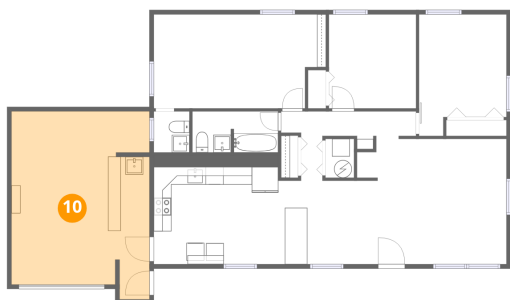
9 Floor 1 - Bedroom



Dimensions: 9'10" x 10'8"
Area: 105 sq. ft
Counted as living area: Yes

Heated: Yes
Finished: Yes
Enclosed: Yes
Contiguous: Yes
Permitted: Yes
Wet space: No
Addition: No
Conversion: No

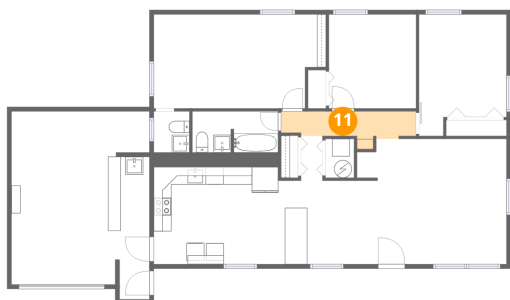
10 Floor 1 - Garage



Dimensions: 15'7" x 21'3"
Area: 308 sq. ft
Counted as living area: No

Heated: No
Finished: No
Enclosed: Yes
Contiguous: Yes
Permitted: Yes
Wet space: No
Addition: No
Conversion: No

11 Floor 1 - Hall



Dimensions: 15'3" x 4'3"
Area: 45 sq. ft
Counted as living area: Yes

Heated: Yes
Finished: Yes
Enclosed: Yes
Contiguous: Yes
Permitted: Yes
Wet space: No
Addition: No
Conversion: No