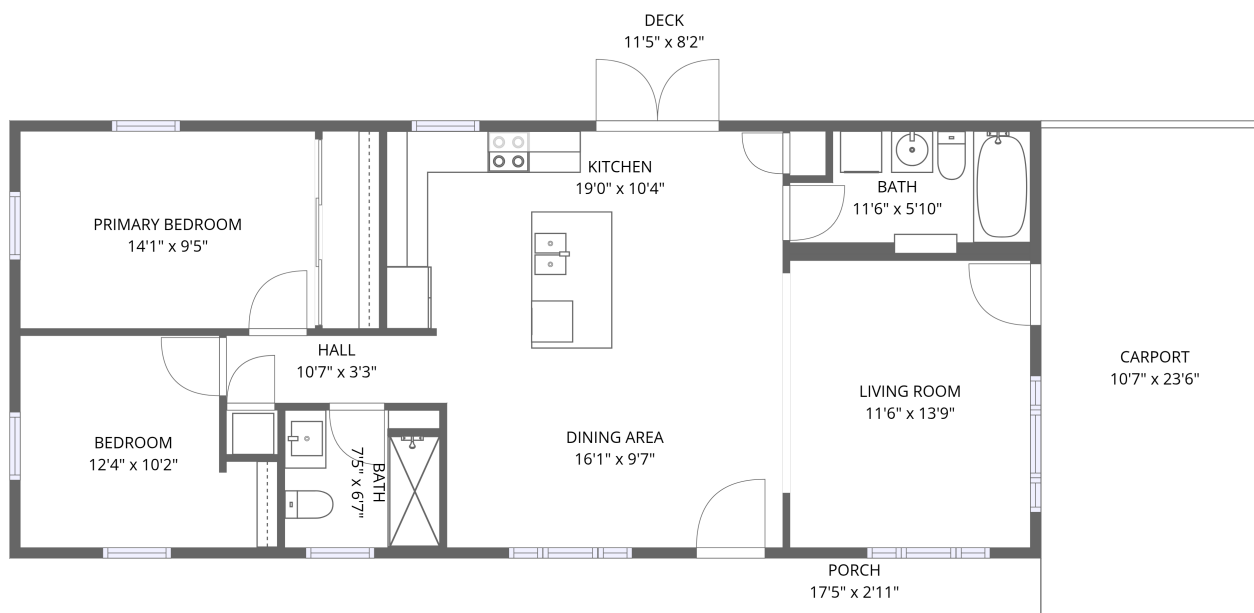


## Home data report

8512 North 29th Street, Temple Crest, Tampa, Hillsborough County, Florida, United States, 33604



**Total Area: 962 sq. ft**

1st Floor: 962 sq. ft

Excluded: Deck 93 sq. ft, Porch 50 sq. ft, Carport 250 sq. ft, Undefined 5 sq. ft, Walls: 69 sq. ft

## Property summary

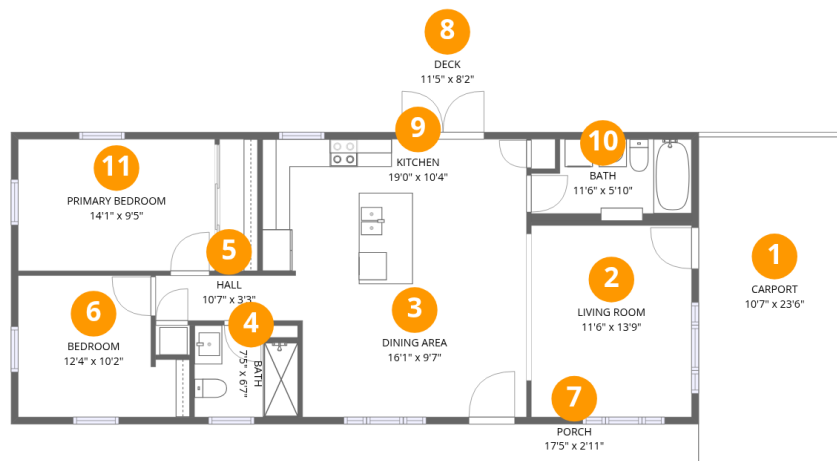
 **1** Floors

 **2** Bedrooms

 **2** Bathrooms

Home data report

8512 North 29th Street, Temple Crest, Tampa, Hillsborough County, Florida, United States, 33604



## Room dimensions

Floor 1

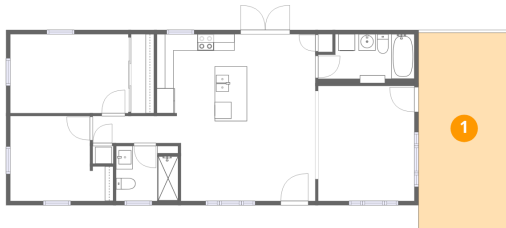
Total:962sqft Excluded: 398sqft

#		Dimensions	sqft	Counted as living area
1	Carport	10'7" x 23'6"	250 sq. ft	No
2	Living Room	11'6" x 13'9"	159 sq. ft	Yes
3	Dining Area	16'1" x 9'7"	154 sq. ft	Yes
4	Bath	7'5" x 6'7"	48 sq. ft	Yes
5	Hall	10'7" x 3'3"	34 sq. ft	Yes
6	Bedroom	12'4" x 10'2"	109 sq. ft	Yes
7	Porch	17'5" x 2'11"	50 sq. ft	No
8	Deck	11'5" x 8'2"	93 sq. ft	No
9	Kitchen	19'0" x 10'4"	195 sq. ft	Yes
10	Bath	11'6" x 5'10"	63 sq. ft	Yes
11	Primary Bedroom	14'1" x 9'5"	134 sq. ft	Yes

8512 North 29th Street, Temple Crest, Tampa, Hillsborough County, Florida, United States, 33604

**1** Floor 1 - Carport

---



Dimensions: 10'7" x 23'6"  
Area: 250 sq. ft  
Counted as living area: No

Heated: No  
Finished: Yes  
Enclosed: No  
Contiguous: Yes  
Permitted: Yes  
Wet space: No  
Addition: No  
Conversion: No

**2** Floor 1 - Living Room

---

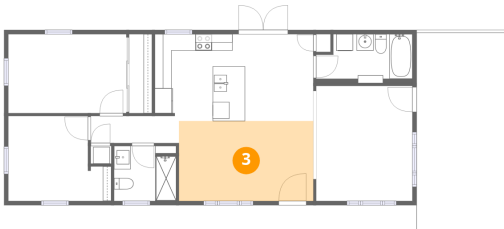


Dimensions: 11'6" x 13'9"  
Area: 159 sq. ft  
Counted as living area: Yes

Heated: Yes  
Finished: Yes  
Enclosed: Yes  
Contiguous: Yes  
Permitted: Yes  
Wet space: No  
Addition: No  
Conversion: No

8512 North 29th Street, Temple Crest, Tampa, Hillsborough County, Florida, United States, 33604

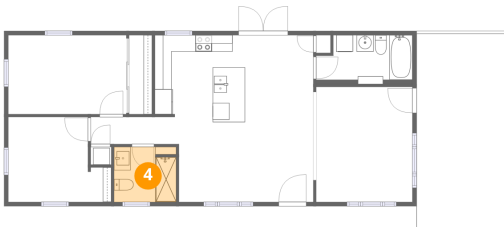
**3** Floor 1 - Dining Area



Dimensions: 16'1" x 9'7"  
Area: 154 sq. ft  
Counted as living area: Yes

Heated: Yes  
Finished: Yes  
Enclosed: Yes  
Contiguous: Yes  
Permitted: Yes  
Wet space: No  
Addition: No  
Conversion: No

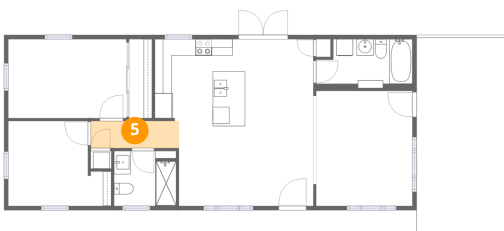
**4** Floor 1 - Bath



Dimensions: 7'5" x 6'7"  
Area: 48 sq. ft  
Counted as living area: Yes

Heated: Yes  
Finished: Yes  
Enclosed: Yes  
Contiguous: Yes  
Permitted: Yes  
Wet space: Yes  
Addition: No  
Conversion: No

**5** Floor 1 - Hall

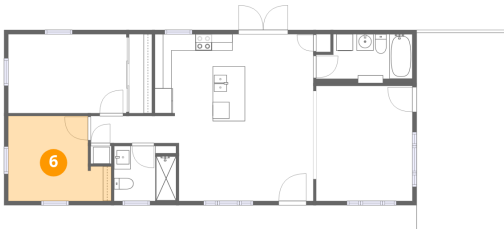


Dimensions: 10'7" x 3'3"  
Area: 34 sq. ft  
Counted as living area: Yes

Heated: Yes  
Finished: Yes  
Enclosed: Yes  
Contiguous: Yes  
Permitted: Yes  
Wet space: No  
Addition: No  
Conversion: No

8512 North 29th Street, Temple Crest, Tampa, Hillsborough County, Florida, United States, 33604

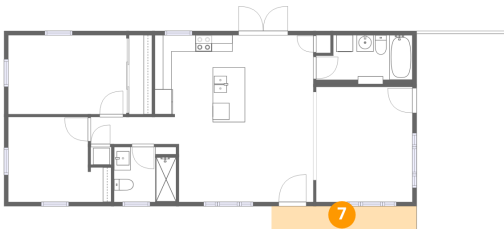
**6** Floor 1 - Bedroom



Dimensions: 12'4" x 10'2"  
Area: 109 sq. ft  
Counted as living area: Yes

Heated: Yes  
Finished: Yes  
Enclosed: Yes  
Contiguous: Yes  
Permitted: Yes  
Wet space: No  
Addition: No  
Conversion: No

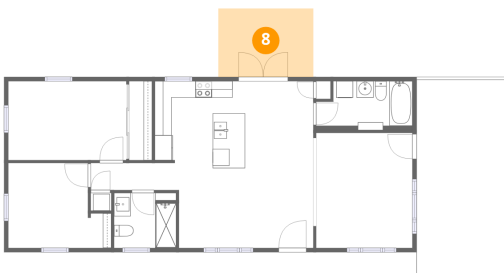
**7** Floor 1 - Porch



Dimensions: 17'5" x 2'11"  
Area: 50 sq. ft  
Counted as living area: No

Heated: No  
Finished: No  
Enclosed: No  
Contiguous: Yes  
Permitted: Yes  
Wet space: No  
Addition: No  
Conversion: No

**8** Floor 1 - Deck

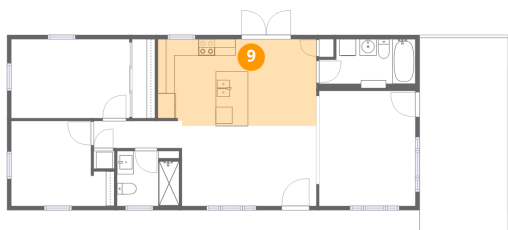


Dimensions: 11'5" x 8'2"  
Area: 93 sq. ft  
Counted as living area: No

Heated: No  
Finished: No  
Enclosed: No  
Contiguous: Yes  
Permitted: Yes  
Wet space: No  
Addition: No  
Conversion: No

8512 North 29th Street, Temple Crest, Tampa, Hillsborough County, Florida, United States, 33604

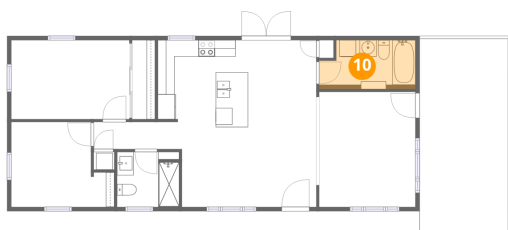
### 9 Floor 1 - Kitchen



Dimensions: 19'0" x 10'4"  
Area: 195 sq. ft  
Counted as living area: Yes

Heated: Yes  
Finished: Yes  
Enclosed: Yes  
Contiguous: Yes  
Permitted: Yes  
Wet space: No  
Addition: No  
Conversion: No

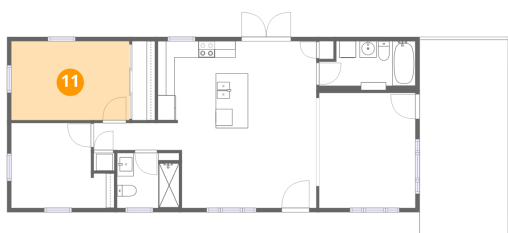
### 10 Floor 1 - Bath



Dimensions: 11'6" x 5'10"  
Area: 63 sq. ft  
Counted as living area: Yes

Heated: Yes  
Finished: Yes  
Enclosed: Yes  
Contiguous: Yes  
Permitted: Yes  
Wet space: Yes  
Addition: No  
Conversion: No

### 11 Floor 1 - Primary Bedroom



Dimensions: 14'1" x 9'5"  
Area: 134 sq. ft  
Counted as living area: Yes

Heated: Yes  
Finished: Yes  
Enclosed: Yes  
Contiguous: Yes  
Permitted: Yes  
Wet space: No  
Addition: No  
Conversion: No