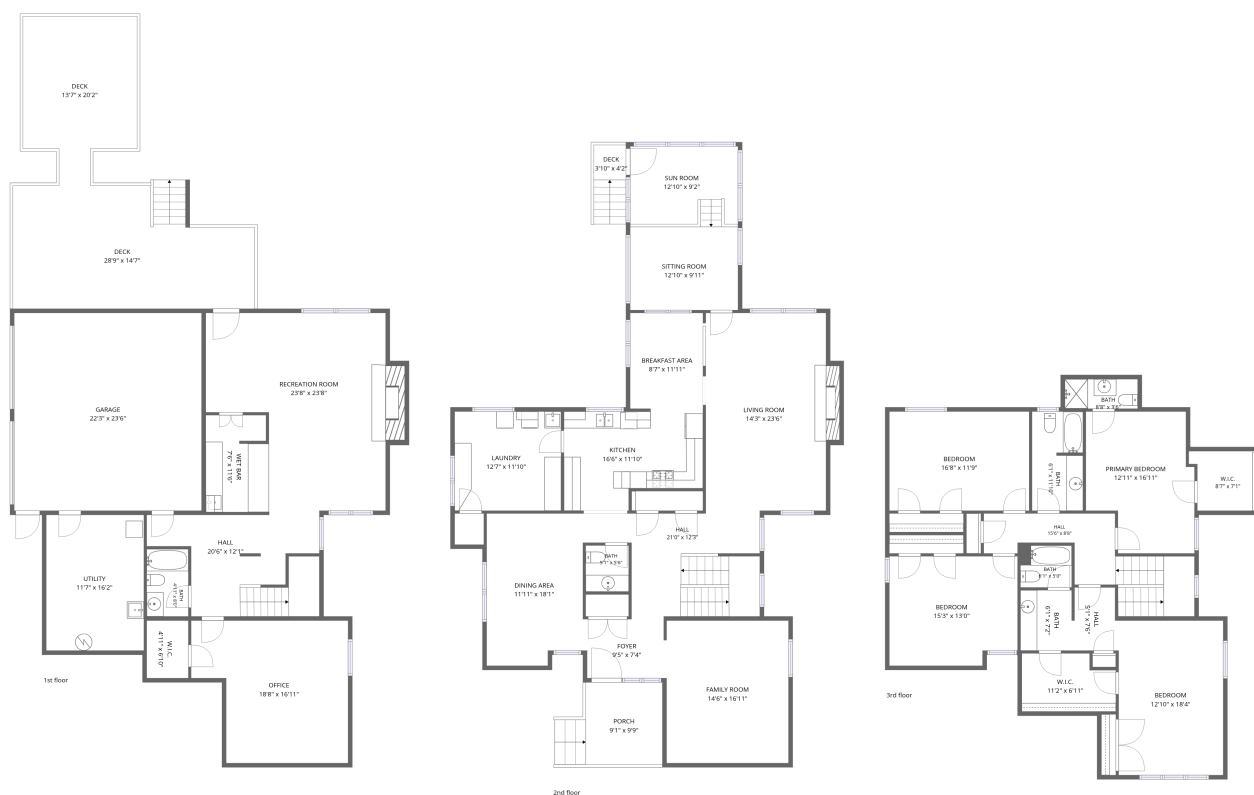


Home data report

6344 Fairway Forest Drive, Fairway Forest, Roanoke, Roanoke County, Virginia, United States, 24018



Total Area: 4375 sq. ft

1st Floor: 1088 sq. ft, 2nd Floor: 1856 sq. ft, 3rd Floor: 1431 sq. ft

Excluded: Utility 187 sq. ft, Garage 524 sq. ft, Deck 647 sq. ft, Fireplace 39 sq. ft, Porch 109 sq. ft, Walls: 337 sq. ft

Property summary



Home data report

6344 Fairway Forest Drive, Fairway Forest, Roanoke, Roanoke County, Virginia, United States, 24018

 **1**
Half baths

 **1**
Garages

Home data report

6344 Fairway Forest Drive, Fairway Forest, Roanoke, Roanoke County, Virginia, United States, 24018



Room dimensions

Floor 1

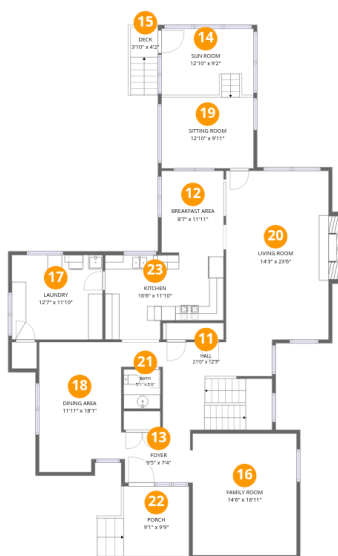
Total:1088sqft

Excluded: 1345sqft

#		Dimensions	sqft	Counted as living area
1	Bath	4'11" x 8'0"	40 sq. ft	Yes
2	Garage	22'3" x 23'6"	524 sq. ft	No
3	Deck	28'9" x 14'7"	381 sq. ft	No
4	W.I.C.	4'11" x 6'10"	34 sq. ft	Yes
5	Office	18'8" x 16'11"	274 sq. ft	Yes
6	Hall	20'6" x 12'1"	202 sq. ft	Yes
7	Recreation Room	23'8" x 23'8"	437 sq. ft	Yes
8	Wet Bar	7'6" x 11'6"	84 sq. ft	Yes
9	Deck	13'7" x 20'2"	230 sq. ft	No
10	Utility	11'7" x 16'2"	187 sq. ft	No

Home data report

6344 Fairway Forest Drive, Fairway Forest, Roanoke, Roanoke County, Virginia, United States, 24018



Room dimensions

Floor 2

Total:1856sqft Excluded: 161sqft

#		Dimensions	sqft	Counted as living area
11	Hall	21'0" x 12'3"	207 sq. ft	Yes
12	Breakfast Area	8'7" x 11'11"	102 sq. ft	Yes
13	Foyer	9'5" x 7'4"	67 sq. ft	Yes
14	Sun Room	12'10" x 9'2"	123 sq. ft	Yes
15	Deck	3'10" x 4'2"	36 sq. ft	No
16	Family Room	14'6" x 16'11"	246 sq. ft	Yes
17	Laundry	12'7" x 11'10"	149 sq. ft	Yes
18	Dining Area	11'11" x 18'1"	202 sq. ft	Yes
19	Sitting Room	12'10" x 9'11"	127 sq. ft	Yes
20	Living Room	14'3" x 23'6"	351 sq. ft	Yes
21	Bath	5'1" x 5'6"	28 sq. ft	Yes

Scan captured on Tue, 09 Jun 2026 17:03:17 GMT
 SIZES AND DIMENSIONS ARE APPROXIMATE, ACTUAL MAY VARY.

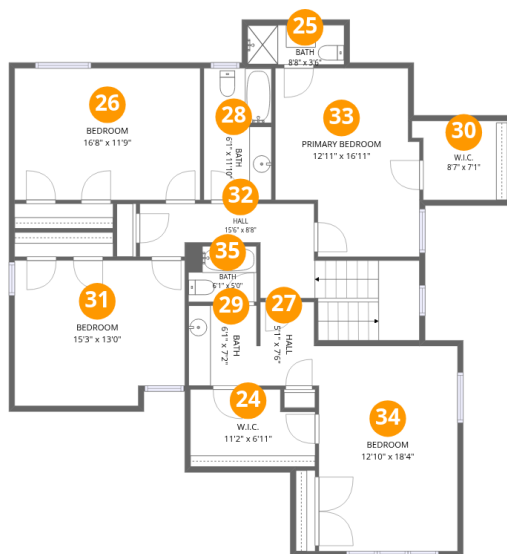
Home data report

6344 Fairway Forest Drive, Fairway Forest, Roanoke, Roanoke County, Virginia, United States, 24018

#		Dimensions	sqft	Counted as living area
22	Porch	9'1" x 9'9"	109 sq. ft	No
23	Kitchen	16'6" x 11'10"	170 sq. ft	Yes

Home data report

6344 Fairway Forest Drive, Fairway Forest, Roanoke, Roanoke County, Virginia, United States, 24018



Room dimensions

Floor 3

Total:1431sqft Excluded: 0sqft

#		Dimensions	sqft	Counted as living area
24	W.I.C.	11'2" x 6'11"	71 sq. ft	Yes
25	Bath	8'8" x 3'6"	30 sq. ft	Yes
26	Bedroom	16'8" x 11'9"	196 sq. ft	Yes
27	Hall	5'1" x 7'6"	37 sq. ft	Yes
28	Bath	6'1" x 11'10"	70 sq. ft	Yes
29	Bath	6'1" x 7'2"	44 sq. ft	Yes
30	W.I.C.	8'7" x 7'1"	55 sq. ft	Yes
31	Bedroom	15'3" x 13'0"	191 sq. ft	Yes
32	Hall	15'6" x 8'8"	150 sq. ft	Yes
33	Primary Bedroom	12'11" x 16'11"	192 sq. ft	Yes
34	Bedroom	12'10" x 18'4"	230 sq. ft	Yes

Scan captured on Tue, 09 Jun 2026 17:03:17 GMT

SIZES AND DIMENSIONS ARE APPROXIMATE, ACTUAL MAY VARY.

Home data report

6344 Fairway Forest Drive, Fairway Forest, Roanoke, Roanoke County, Virginia, United States, 24018

#		Dimensions	sqft	Counted as living area
35	Bath	6'1" x 5'0"	30 sq. ft	Yes

6344 Fairway Forest Drive, Fairway Forest, Roanoke, Roanoke County, Virginia, United States, 24018

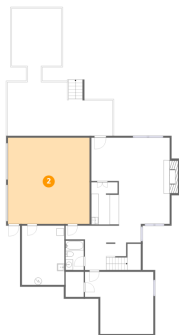
1 Floor 1 - Bath



Dimensions: 4'11" x 8'0"
Area: 40 sq. ft
Counted as living area: Yes

Heated: Yes
Finished: Yes
Enclosed: Yes
Contiguous: Yes
Permitted: Yes
Wet space: Yes
Addition: No
Conversion: No

2 Floor 1 - Garage



Dimensions: 22'3" x 23'6"
Area: 524 sq. ft
Counted as living area: No

Heated: No
Finished: No
Enclosed: Yes
Contiguous: Yes
Permitted: Yes
Wet space: No
Addition: No
Conversion: No

6344 Fairway Forest Drive, Fairway Forest, Roanoke, Roanoke County, Virginia, United States, 24018

3 Floor 1 - Deck



Dimensions: 28'9" x 14'7"
Area: 381 sq. ft
Counted as living area: No

Heated: No
Finished: No
Enclosed: No
Contiguous: Yes
Permitted: Yes
Wet space: No
Addition: No
Conversion: No

4 Floor 1 - W.I.C.



Dimensions: 4'11" x 6'10"
Area: 34 sq. ft
Counted as living area: Yes

Heated: Yes
Finished: Yes
Enclosed: Yes
Contiguous: Yes
Permitted: Yes
Wet space: No
Addition: No
Conversion: No

5 Floor 1 - Office



Dimensions: 18'8" x 16'11"
Area: 274 sq. ft
Counted as living area: Yes

Heated: Yes
Finished: Yes
Enclosed: Yes
Contiguous: Yes
Permitted: Yes
Wet space: No
Addition: No
Conversion: No

6344 Fairway Forest Drive, Fairway Forest, Roanoke, Roanoke County, Virginia, United States, 24018

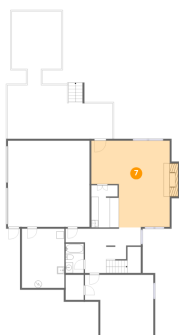
6 Floor 1 - Hall



Dimensions: 20'6" x 12'1"
Area: 202 sq. ft
Counted as living area: Yes

Heated: Yes
Finished: Yes
Enclosed: Yes
Contiguous: Yes
Permitted: Yes
Wet space: No
Addition: No
Conversion: No

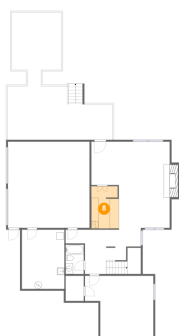
7 Floor 1 - Recreation Room



Dimensions: 23'8" x 23'8"
Area: 437 sq. ft
Counted as living area: Yes

Heated: Yes
Finished: Yes
Enclosed: Yes
Contiguous: Yes
Permitted: Yes
Wet space: No
Addition: No
Conversion: No

8 Floor 1 - Wet Bar



Dimensions: 7'6" x 11'6"
Area: 84 sq. ft
Counted as living area: Yes

Heated: Yes
Finished: Yes
Enclosed: Yes
Contiguous: Yes
Permitted: Yes
Wet space: No
Addition: No
Conversion: No

6344 Fairway Forest Drive, Fairway Forest, Roanoke, Roanoke County, Virginia, United States, 24018

9 Floor 1 - Deck



Dimensions: 13'7" x 20'2"
Area: 230 sq. ft
Counted as living area: No

Heated: No
Finished: No
Enclosed: No
Contiguous: Yes
Permitted: Yes
Wet space: No
Addition: No
Conversion: No

10 Floor 1 - Utility



Dimensions: 11'7" x 16'2"
Area: 187 sq. ft
Counted as living area: No

Heated: Yes
Finished: No
Enclosed: Yes
Contiguous: Yes
Permitted: Yes
Wet space: No
Addition: No
Conversion: No

11 Floor 2 - Hall



Dimensions: 21'0" x 12'3"
Area: 207 sq. ft
Counted as living area: Yes

Heated: Yes
Finished: Yes
Enclosed: Yes
Contiguous: Yes
Permitted: Yes
Wet space: No
Addition: No
Conversion: No

6344 Fairway Forest Drive, Fairway Forest, Roanoke, Roanoke County, Virginia, United States, 24018

12 Floor 2 - Breakfast Area



Dimensions: 8'7" x 11'11"
Area: 102 sq. ft
Counted as living area: Yes

Heated: Yes
Finished: Yes
Enclosed: Yes
Contiguous: Yes
Permitted: Yes
Wet space: No
Addition: No
Conversion: No

13 Floor 2 - Foyer



Dimensions: 9'5" x 7'4"
Area: 67 sq. ft
Counted as living area: Yes

Heated: Yes
Finished: Yes
Enclosed: Yes
Contiguous: Yes
Permitted: Yes
Wet space: No
Addition: No
Conversion: No

14 Floor 2 - Sun Room



Dimensions: 12'10" x 9'2"
Area: 123 sq. ft
Counted as living area: Yes

Heated: Yes
Finished: Yes
Enclosed: Yes
Contiguous: Yes
Permitted: Yes
Wet space: No
Addition: No
Conversion: No

6344 Fairway Forest Drive, Fairway Forest, Roanoke, Roanoke County, Virginia, United States, 24018

15 Floor 2 - Deck



Dimensions: 3'10" x 4'2"
Area: 36 sq. ft
Counted as living area: No

Heated: No
Finished: No
Enclosed: No
Contiguous: Yes
Permitted: Yes
Wet space: No
Addition: No
Conversion: No

16 Floor 2 - Family Room



Dimensions: 14'6" x 16'11"
Area: 246 sq. ft
Counted as living area: Yes

Heated: Yes
Finished: Yes
Enclosed: Yes
Contiguous: Yes
Permitted: Yes
Wet space: No
Addition: No
Conversion: No

17 Floor 2 - Laundry



Dimensions: 12'7" x 11'10"
Area: 149 sq. ft
Counted as living area: Yes

Heated: Yes
Finished: Yes
Enclosed: Yes
Contiguous: Yes
Permitted: Yes
Wet space: No
Addition: No
Conversion: No

6344 Fairway Forest Drive, Fairway Forest, Roanoke, Roanoke County, Virginia, United States, 24018

18 Floor 2 - Dining Area



Dimensions: 11'11" x 18'1"
Area: 202 sq. ft
Counted as living area: Yes

Heated: Yes
Finished: Yes
Enclosed: Yes
Contiguous: Yes
Permitted: Yes
Wet space: No
Addition: No
Conversion: No

19 Floor 2 - Sitting Room



Dimensions: 12'10" x 9'11"
Area: 127 sq. ft
Counted as living area: Yes

Heated: Yes
Finished: Yes
Enclosed: Yes
Contiguous: Yes
Permitted: Yes
Wet space: No
Addition: No
Conversion: No

20 Floor 2 - Living Room



Dimensions: 14'3" x 23'6"
Area: 351 sq. ft
Counted as living area: Yes

Heated: Yes
Finished: Yes
Enclosed: Yes
Contiguous: Yes
Permitted: Yes
Wet space: No
Addition: No
Conversion: No

6344 Fairway Forest Drive, Fairway Forest, Roanoke, Roanoke County, Virginia, United States, 24018

21 Floor 2 - Bath



Dimensions: 5'1" x 5'6"
Area: 28 sq. ft
Counted as living area: Yes

Heated: Yes
Finished: Yes
Enclosed: Yes
Contiguous: Yes
Permitted: Yes
Wet space: Yes
Addition: No
Conversion: No

22 Floor 2 - Porch



Dimensions: 9'1" x 9'9"
Area: 109 sq. ft
Counted as living area: No

Heated: No
Finished: No
Enclosed: No
Contiguous: Yes
Permitted: Yes
Wet space: No
Addition: No
Conversion: No

23 Floor 2 - Kitchen

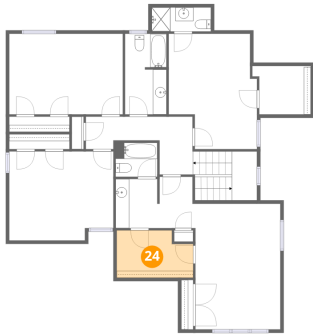


Dimensions: 16'6" x 11'10"
Area: 170 sq. ft
Counted as living area: Yes

Heated: Yes
Finished: Yes
Enclosed: Yes
Contiguous: Yes
Permitted: Yes
Wet space: No
Addition: No
Conversion: No

6344 Fairway Forest Drive, Fairway Forest, Roanoke, Roanoke County, Virginia, United States, 24018

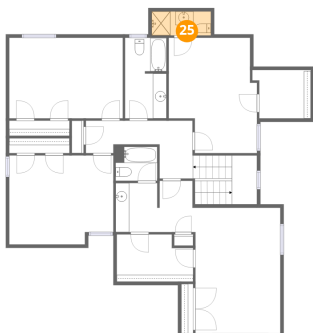
24 Floor 3 - W.I.C.



Dimensions: 11'2" x 6'11"
Area: 71 sq. ft
Counted as living area: Yes

Heated: Yes
Finished: Yes
Enclosed: Yes
Contiguous: Yes
Permitted: Yes
Wet space: No
Addition: No
Conversion: No

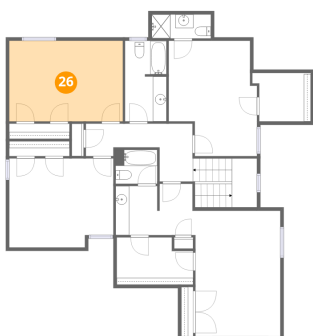
25 Floor 3 - Bath



Dimensions: 8'8" x 3'6"
Area: 30 sq. ft
Counted as living area: Yes

Heated: Yes
Finished: Yes
Enclosed: Yes
Contiguous: Yes
Permitted: Yes
Wet space: Yes
Addition: No
Conversion: No

26 Floor 3 - Bedroom

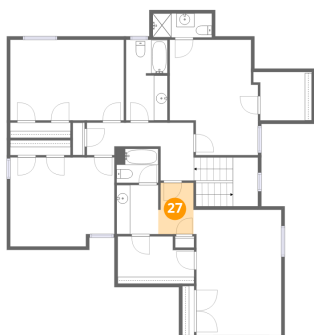


Dimensions: 16'8" x 11'9"
Area: 196 sq. ft
Counted as living area: Yes

Heated: Yes
Finished: Yes
Enclosed: Yes
Contiguous: Yes
Permitted: Yes
Wet space: No
Addition: No
Conversion: No

6344 Fairway Forest Drive, Fairway Forest, Roanoke, Roanoke County, Virginia, United States, 24018

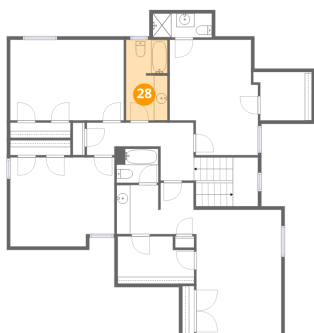
27 Floor 3 - Hall



Dimensions: 5'1" x 7'6"
Area: 37 sq. ft
Counted as living area: Yes

Heated: Yes
Finished: Yes
Enclosed: Yes
Contiguous: Yes
Permitted: Yes
Wet space: No
Addition: No
Conversion: No

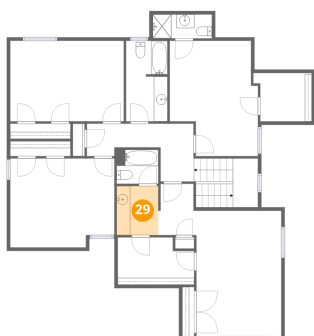
28 Floor 3 - Bath



Dimensions: 6'1" x 11'10"
Area: 70 sq. ft
Counted as living area: Yes

Heated: Yes
Finished: Yes
Enclosed: Yes
Contiguous: Yes
Permitted: Yes
Wet space: Yes
Addition: No
Conversion: No

29 Floor 3 - Bath



Dimensions: 6'1" x 7'2"
Area: 44 sq. ft
Counted as living area: Yes

Heated: Yes
Finished: Yes
Enclosed: Yes
Contiguous: Yes
Permitted: Yes
Wet space: Yes
Addition: No
Conversion: No

6344 Fairway Forest Drive, Fairway Forest, Roanoke, Roanoke County, Virginia, United States, 24018

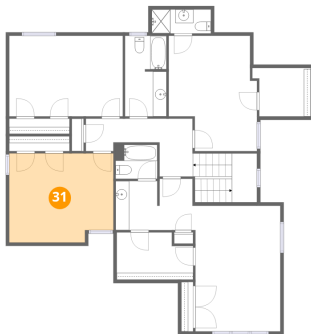
30 Floor 3 - W.I.C.



Dimensions: 8'7" x 7'1"
Area: 55 sq. ft
Counted as living area: Yes

Heated: Yes
Finished: Yes
Enclosed: Yes
Contiguous: Yes
Permitted: Yes
Wet space: No
Addition: No
Conversion: No

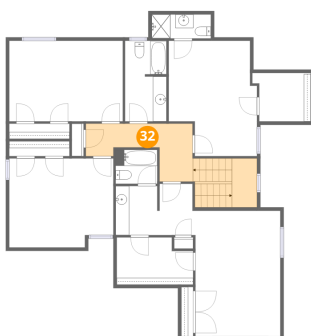
31 Floor 3 - Bedroom



Dimensions: 15'3" x 13'0"
Area: 191 sq. ft
Counted as living area: Yes

Heated: Yes
Finished: Yes
Enclosed: Yes
Contiguous: Yes
Permitted: Yes
Wet space: No
Addition: No
Conversion: No

32 Floor 3 - Hall

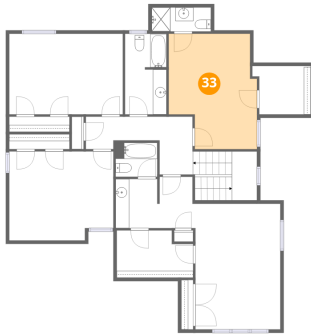


Dimensions: 15'6" x 8'8"
Area: 150 sq. ft
Counted as living area: Yes

Heated: Yes
Finished: Yes
Enclosed: Yes
Contiguous: Yes
Permitted: Yes
Wet space: No
Addition: No
Conversion: No

6344 Fairway Forest Drive, Fairway Forest, Roanoke, Roanoke County, Virginia, United States, 24018

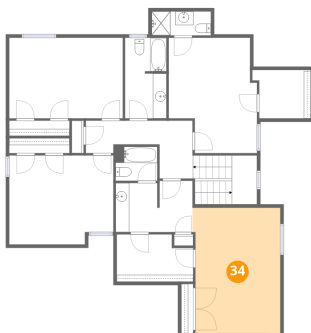
33 Floor 3 - Primary Bedroom



Dimensions: 12'11" x 16'11"
Area: 192 sq. ft
Counted as living area: Yes

Heated: Yes
Finished: Yes
Enclosed: Yes
Contiguous: Yes
Permitted: Yes
Wet space: No
Addition: No
Conversion: No

34 Floor 3 - Bedroom



Dimensions: 12'10" x 18'4"
Area: 230 sq. ft
Counted as living area: Yes

Heated: Yes
Finished: Yes
Enclosed: Yes
Contiguous: Yes
Permitted: Yes
Wet space: No
Addition: No
Conversion: No

35 Floor 3 - Bath



Dimensions: 6'1" x 5'0"
Area: 30 sq. ft
Counted as living area: Yes

Heated: Yes
Finished: Yes
Enclosed: Yes
Contiguous: Yes
Permitted: Yes
Wet space: Yes
Addition: No
Conversion: No