

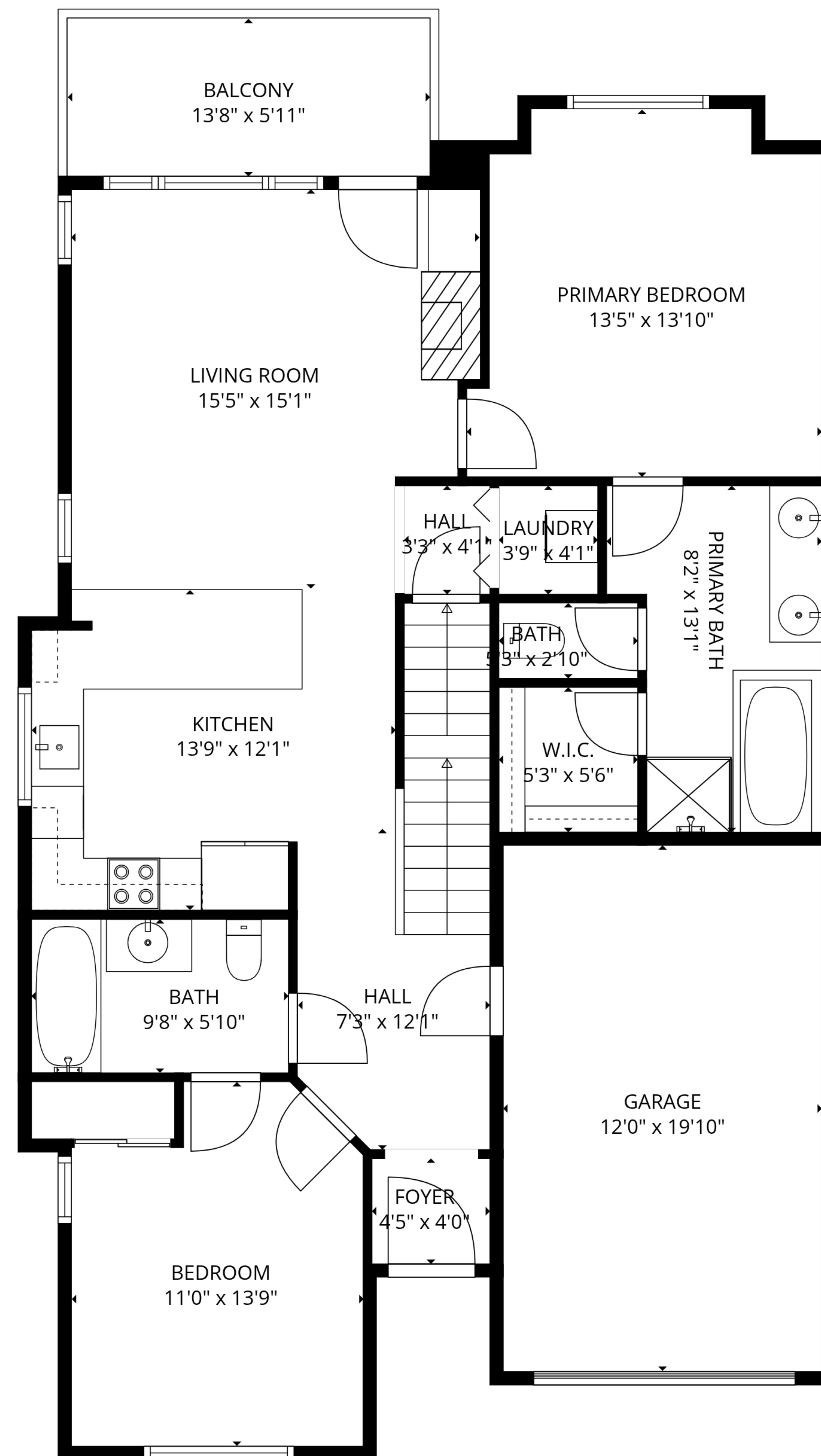
BASEMENT
29'10" x 47'6"

TOTAL: 1604 sq. ft

Basement: 0 sq. ft, 1st floor: 1084 sq. ft, 2nd floor: 520 sq. ft

EXCLUDED AREAS: BASEMENT: 1084 sq. ft, GARAGE: 239 sq. ft, BALCONY: 82 sq. ft,
WALLS: 210 sq. ft

SIZES AND DIMENSIONS ARE APPROXIMATE, ACTUAL MAY VARY.

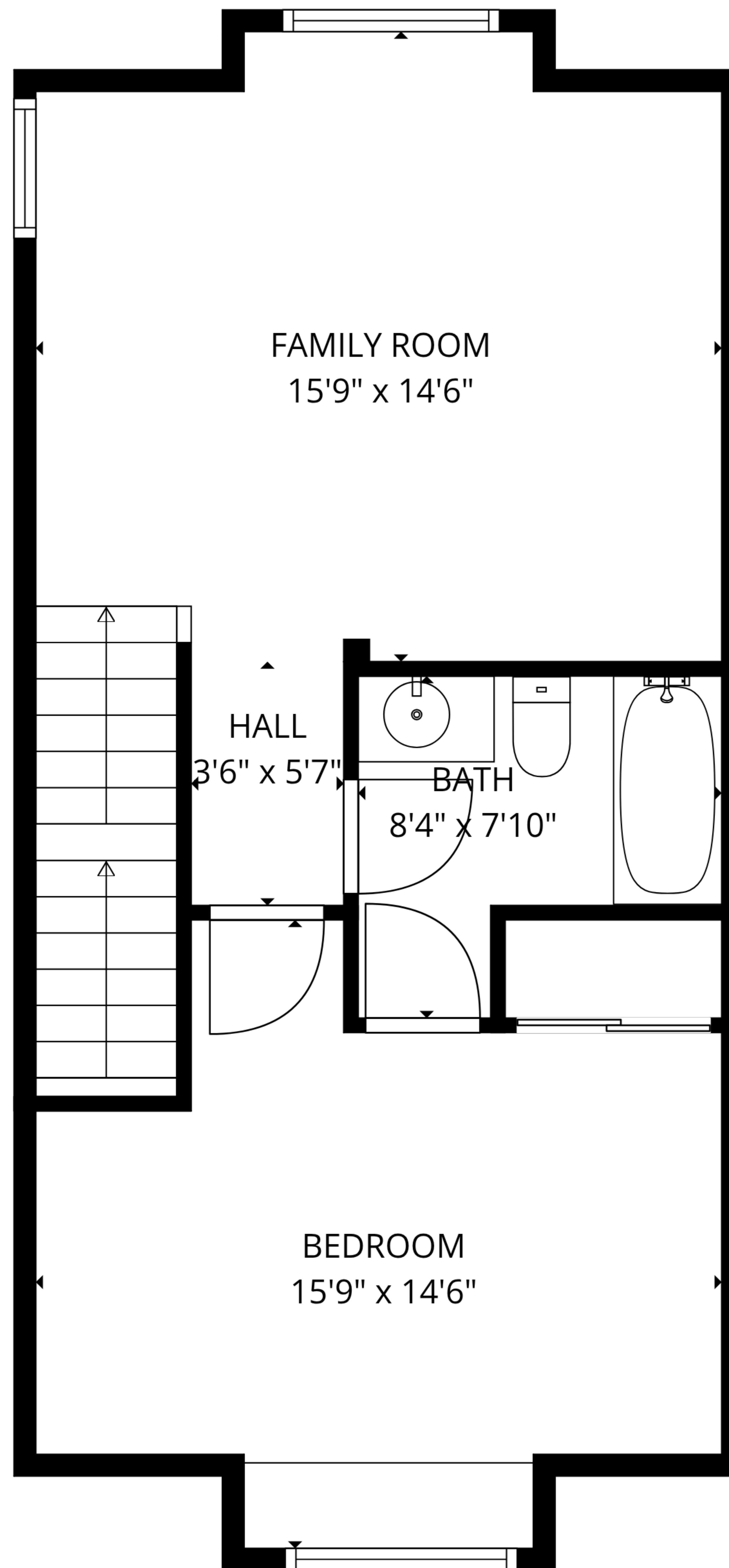


TOTAL: 1604 sq. ft

Basement: 0 sq. ft, 1st floor: 1084 sq. ft, 2nd floor: 520 sq. ft

EXCLUDED AREAS: BASEMENT: 1084 sq. ft, GARAGE: 239 sq. ft, BALCONY: 82 sq. ft,
WALLS: 210 sq. ft

SIZES AND DIMENSIONS ARE APPROXIMATE, ACTUAL MAY VARY.

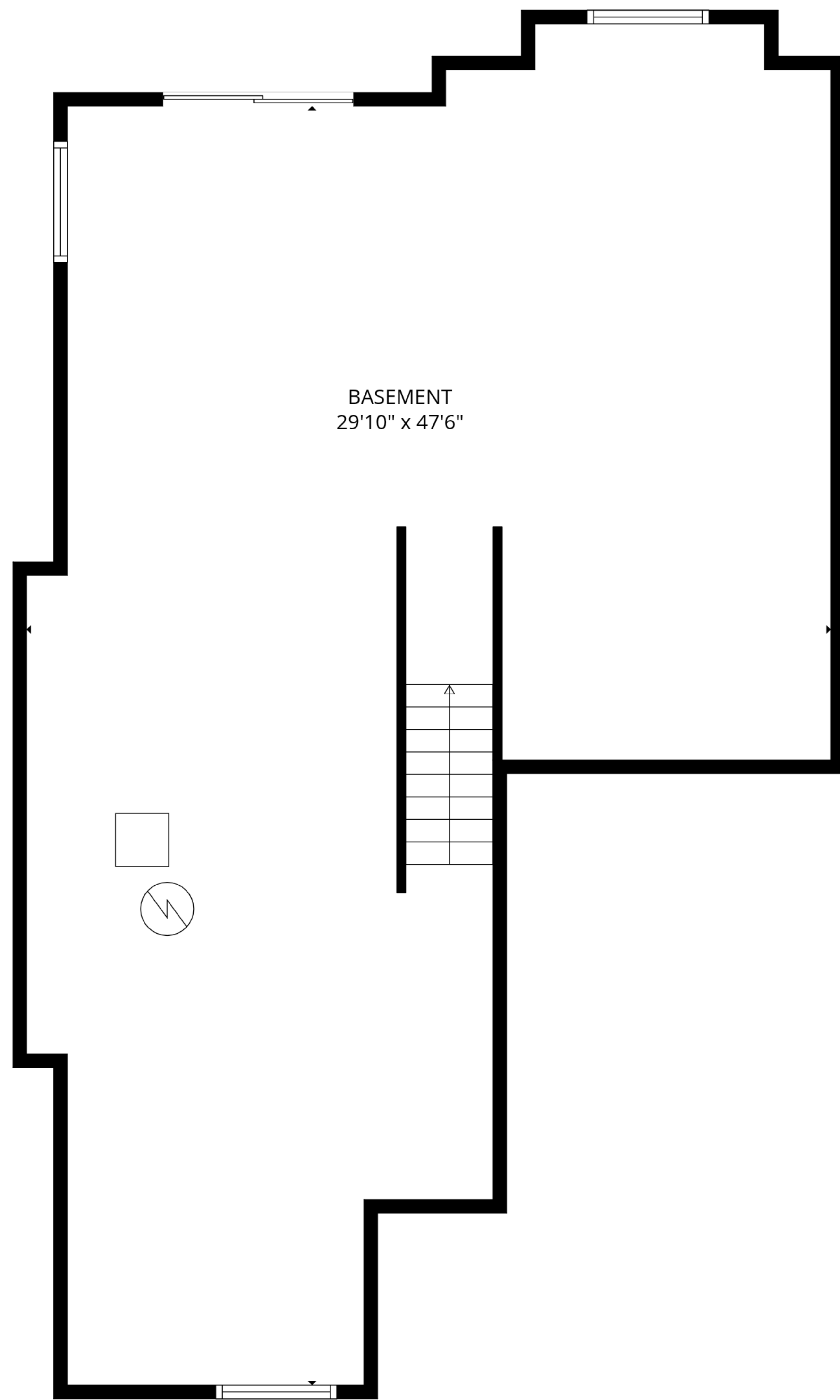


TOTAL: 1604 sq. ft

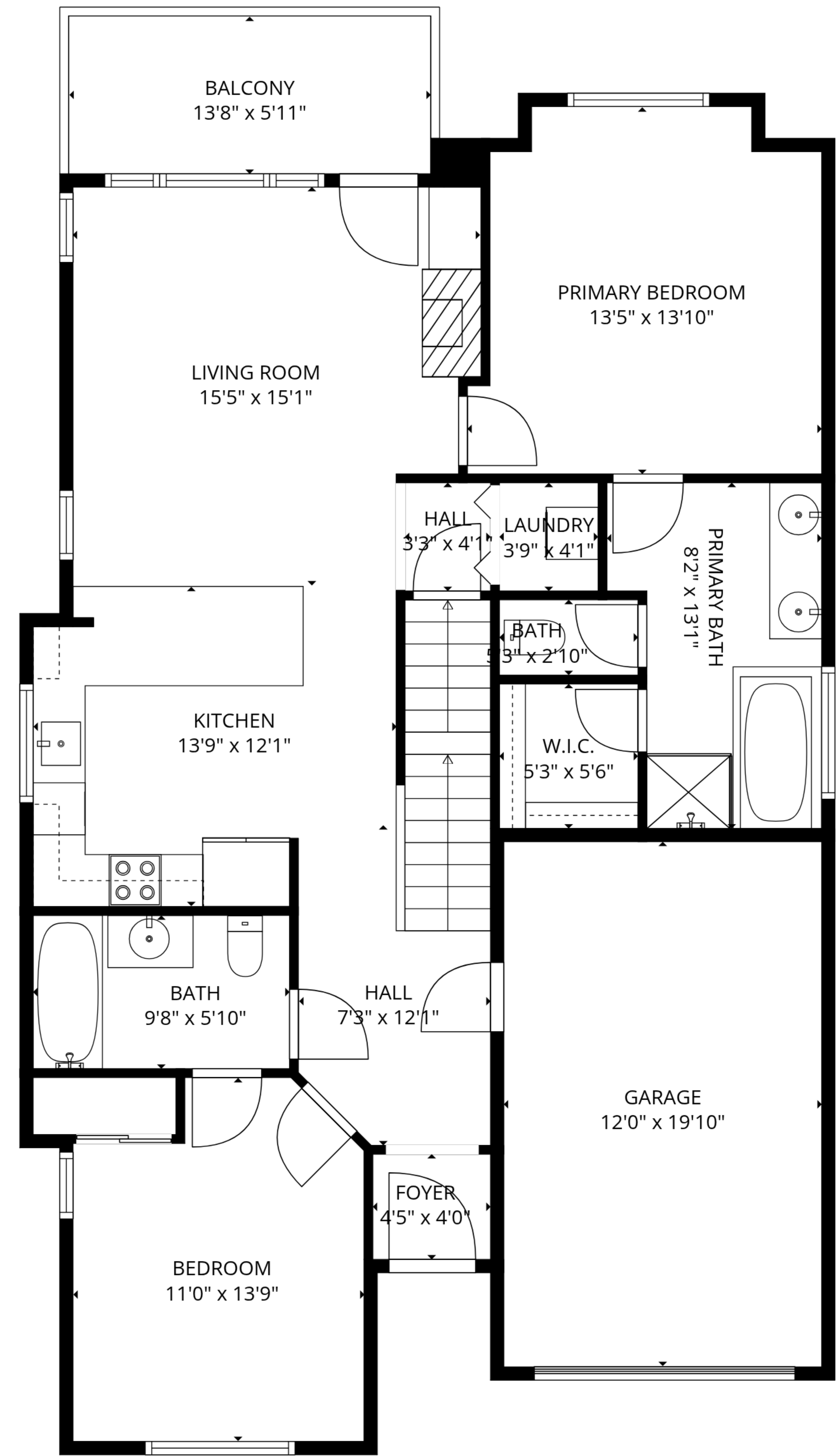
Basement: 0 sq. ft, 1st floor: 1084 sq. ft, 2nd floor: 520 sq. ft

EXCLUDED AREAS: BASEMENT: 1084 sq. ft, GARAGE: 239 sq. ft, BALCONY: 82 sq. ft,
WALLS: 210 sq. ft

SIZES AND DIMENSIONS ARE APPROXIMATE, ACTUAL MAY VARY.



BASEMENT
29'10" x 47'6"



BALCONY
13'8" x 5'11"

LIVING ROOM
15'5" x 15'1"

PRIMARY BEDROOM
13'5" x 13'10"

KITCHEN
13'9" x 12'1"

HALL
3'3" x 4'1"

LAUNDRY
3'9" x 4'1"

PRIMARY BATH
8'2" x 13'1"

BATH
5'3" x 2'10"

W.I.C.
5'3" x 5'6"

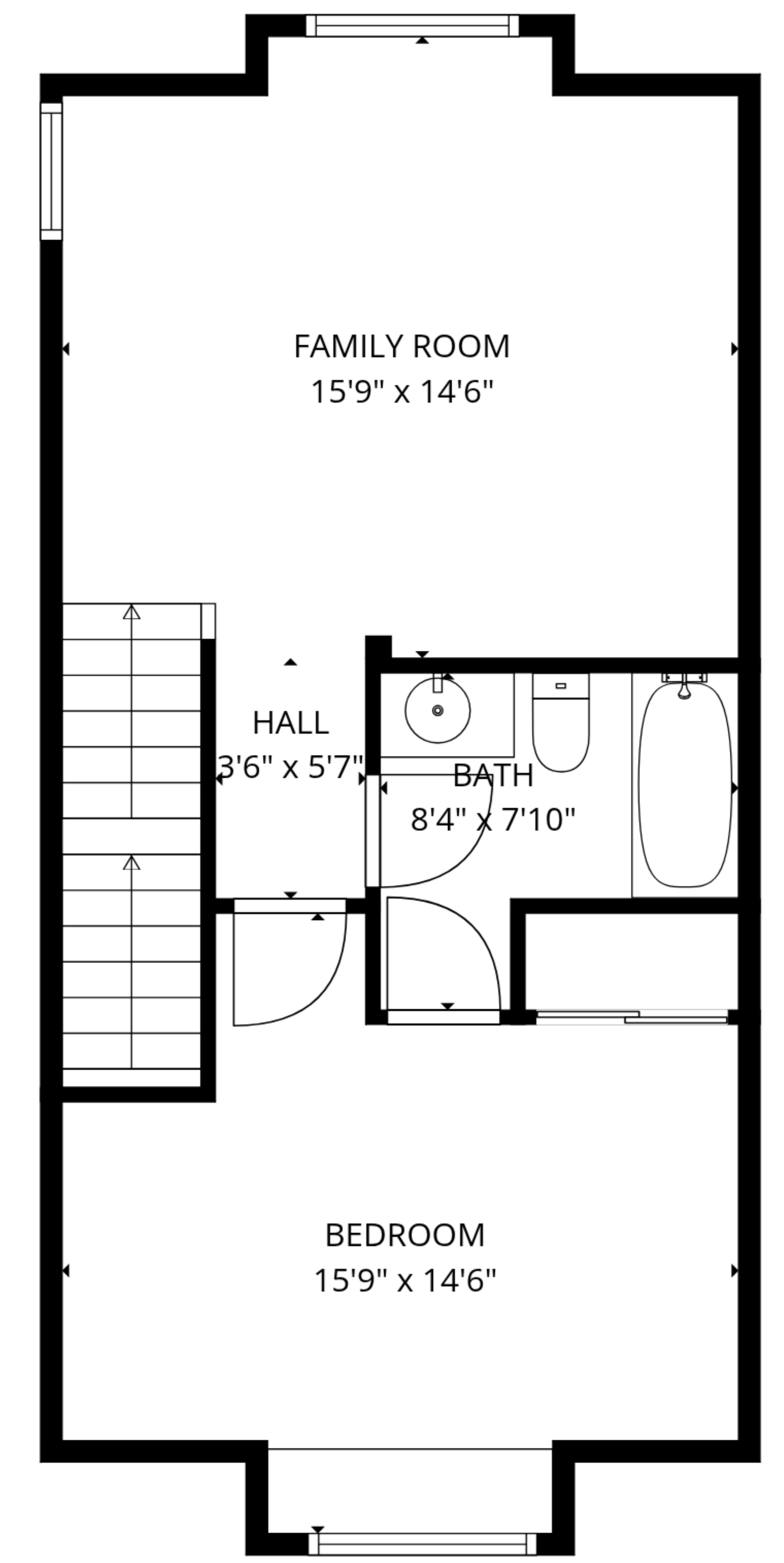
BATH
9'8" x 5'10"

HALL
7'3" x 12'1"

GARAGE
12'0" x 19'10"

FOYER
4'5" x 4'0"

BEDROOM
11'0" x 13'9"



FAMILY ROOM
15'9" x 14'6"

HALL
3'6" x 5'7"

BATH
8'4" x 7'10"

BEDROOM
15'9" x 14'6"

2nd floor

Basement

1st floor

TOTAL: 1604 sq. ft
 Basement: 0 sq. ft, 1st floor: 1084 sq. ft, 2nd floor: 520 sq. ft
 EXCLUDED AREAS: BASEMENT: 1084 sq. ft, GARAGE: 239 sq. ft, BALCONY: 82 sq. ft,
 WALLS: 210 sq. ft

SIZES AND DIMENSIONS ARE APPROXIMATE, ACTUAL MAY VARY.